

Whitsunday Resource Operations Plan

December 2011

Prepared by: Water Allocation and Planning, Department of Environment and Resource Management

© The State of Queensland (Department of Environment and Resource Management) 2011

The department authorises the reproduction of textual material, whole or part, in any form, provided appropriate acknowledgement is given.

If you need to access this publication in a language other than English, please call the Translating and Interpreting Service (TIS National) on 131 450 and ask them to telephone Library Services on +61 7 3224 8412.

This publication can be made available in an alternative format (e.g. large print or audiotape) on request for people with vision impairment; phone +61 7 3224 8412 or email <library@derm.qld.gov.au>.

December 2011

#29980

Foreword

Finalisation of this Whitsunday Resource Operations Plan 2011 is a critical step in implementing the Water Resource (Whitsunday) Plan 2010.

This final plan also delivers a significant milestone for Queensland by putting in place the operational and entitlement arrangements for the Proserpine River Water Supply Scheme.

Released as a draft in November 2010, this resource operations plan has been finalised following a period of public review and comment.

It was through submissions on the draft plan that water users' issues and concerns were raised about water sharing in the Andromache River and O'Connell River subcatchments.

Advice from individual water users and their representative groups seeking additional time for consultation about their water sharing concerns was invaluable in helping me decide to defer finalising the following provisions:

- the conversion of existing water entitlements on the O'Connell and Andromache rivers to tradeable unsupplemented water allocations and rules for water trading
- the amendment of existing water entitlements on the tributaries of the O'Connell and Andromache rivers to state volumetric limits rather than area-based limits
- the establishment of water sharing rules for all water entitlements in the O'Connell and Andromache river subcatchments.

The department remains committed to resolving the matters relating to the deferred provisions in close consultation with individual water users and their representative groups over the next 12 months.

There was no reason to delay finalising all other provisions of the plan as the concerns were specific to water entitlements in the Andromache and O'Connell river subcatchments.

This plan establishes 174 tradeable water allocations in the Proserpine River Water Supply Scheme, and sets the water sharing and water trading rules associated with these allocations. It also amends existing water licences in the Proserpine River, Kelsey Creek and Thompson Creek subcatchments to include volumetric limits, and establishes processes for releasing and granting unallocated water.

Additionally, a monitoring and reporting program will provide the checks and balances needed to ensure that the outcomes of the water resource plan are being achieved through the implementation of the resource operations plan.

I would like to thank the groups and individuals who contributed to the planning process and, in particular, those who lodged submissions on the draft plan.

Debbie Best
Deputy Director-General
Department of Environment and Resource Management

Contents

Chapter 1	Preliminary	1
1	Short title	1
2	Commencement of the resource operations plan.....	1
3	Purpose of plan	1
4	Interpretation of words used in this plan.....	1
5	Plan area	1
6	Water to which this plan applies	1
7	Water management areas—Water Regulation 2002, section 56(4A).....	1
8	Resource operations plan zones.....	1
9	Information about areas, schemes and zones.....	2
10	Purpose of a water allocation	2
11	Metering	2
12	Departmental water monitoring data collection standards.....	2
13	Departmental water monitoring data reporting standards.....	2
14	Operating and environmental management rules and monitoring requirements	3
15	Implementation.....	3
16	Sustainable management of water	4
17	Addressing water resource plan outcomes	5
18 to 28	section numbers not used	5
Chapter 2	Unallocated water	6
29	Scope of chapter 2	6
30	Record of volume of unallocated water	6
31	Requirement for information about land suitability	6
32	Land and water management plan.....	6
Part 1	Unallocated water reserves.....	6
33	Unallocated water reserves.....	6
Part 2	Granting unallocated water from reserves	7
Division 1	Granting from general reserve and strategic reserve for state purposes	7
34	Process for granting unallocated water held as general reserve and strategic reserve for state purposes.....	7
35	Unallocated water product specification	7
Division 2	Terms and conditions for water licences	7
36	Water licences for taking water from a watercourse, lake or spring	7
37	Water licences for taking groundwater	7
38	Water licences for taking overland flow water	7
39	Additional condition for water licences granted for particular State purposes	8
40 to 49	section numbers not used	8

Chapter 3	Granting, converting and amending authorisations	9
Part 1	Granting of a resource operations licence	9
50	Resource operations licence	9
Part 2	Granting of a distribution operations licence	9
51	Distribution operations licence	9
Part 3	Converting to and granting of supplemented water allocations.....	9
52	Scope of part 3	9
53	Rules for converting existing interim water allocations to supplemented water allocations.....	10
54	Rules for granting supplemented water allocations for distribution loss	10
55	Granting of supplemented water allocations	11
Part 4	Amending of water licences	11
56	Scope of part 4	11
57	Amending a water licence for taking unsupplemented water	11
58	Amending existing water licences for taking unsupplemented water	11
Part 5	Granting a resource operations licence or distribution operations licence to meet future water requirements	12
59	Scope of part 5	12
60	Applying for a resource operations licence or distribution operations licence	12
61	Additional information may be required	12
62	Matters the chief executive must consider	13
63	Deciding an application for a resource operations licence or distribution operations licence	13
Part 6	Amending a resource operations licence or distribution operations licence to meet future water requirements	13
64	Scope of this part	13
Division 1	Amendment by the chief executive— <i>Water Act 2000</i> , section 111A.....	13
65	Amending a resource operations licence or a distribution operations licence by chief executive	13
66	Matters chief executive must consider	14
67	Deciding whether to amend a resource operations licence or distribution operations licence.....	14
Division 2	Amendment requested by the scheme licence holder— <i>Water Act 2000</i> , section 111A.....	14
68	Amending a resource operations licence or distribution operations licence on application by holder	14
69	Additional information may be required	14
70	Matters chief executive must consider	15
71	Deciding whether to amend a resource operations licence or distribution operations licence.....	15
72 to 87	section numbers not used	15
Chapter 4	Prosperpine River Water Supply Scheme.....	16
88	Scope of chapter 4	16
89	Scheme licence holder responsibilities.....	16
Part 1	Operating and environmental management rules	16
90	Use of watercourses for distribution	16

91	Operating levels of Peter Faust Dam	17
92	Change in rate of release from Peter Faust Dam	17
93	Quality of water downstream of Peter Faust Dam	17
Part 2	Water sharing rules	17
94	Announced allocation	17
95	Calculation of announced allocation for high priority and medium priority water allocations	18
96	Calculation of announced allocation for water allocations changed from priority group A1 to priority group A	19
97	Announced allocation parameters	19
98	Carry over	22
99	Taking water under a water allocation	22
100	Critical water supply arrangements	22
101	Commencement and cessation of critical water supply arrangements	23
102	Changing the critical water supply arrangements	23
Part 3	Dealing with water allocations	23
Division 1	Subdivision or amalgamation of water allocations	23
103	Permitted subdivisions or amalgamations	23
104	Prohibited subdivisions or amalgamations	24
Division 2	Water allocation change rules	24
105	Scope of division 2	24
Subdivision 1	Permitted changes	24
106	Location	24
107	Nominal location	26
108	Priority group	26
109	Purpose	27
Subdivision 2	Prohibited changes	27
110	Prohibited changes	27
Subdivision 3	Assessed changes to water allocations	27
111	Change of purpose from 'distribution loss'	27
Subdivision 4	Other changes to water allocations	28
112	Application for changes not specified as permitted or prohibited	28
Part 4	Seasonal water assignment rules	28
113	Maximum water use	28
114	Seasonal water assignment rules	28
115 to 175 section numbers not used		29
Chapter 5	Chapter not used	30
Chapter 6	Chapter not used	31
Chapter 7	Dealing with Water Licence Applications	32
176	Scope of chapter 7	32

177	Water licence applications to which this chapter applies.....	32
178	Applications to be refused.....	32
179	Applications to interfere with the flow of water	32
180	Application to increase the maximum rate at which water may be taken	33
181	Application to increase the daily volumetric limit	34
182	Applications to take water for stock or domestic purposes.....	35
183 to 193	section numbers not used	35
Chapter 8	Granting Water Licences for Taking Overland Flow Water	36
194	Scope of chapter 8	36
195	Granting a water licence in accordance with section 69 of the Water Resource (Whitsunday) Plan 2010	36
196	Certified reports for overland flow works	36
197	Content and conditions for a water licence to take overland flow water	37
198 to 208	section numbers not used	37
Chapter 9	Monitoring and reporting	38
209	Water monitoring.....	38
210	Natural ecosystems monitoring	38
211	Assessment.....	38
212 to 222	section numbers not used	38
Chapter 10	Scheme licence holder monitoring and reporting.....	39
223	Scope of chapter 10	39
224	Scheme licence holder responsibilities.....	39
Part 1	Scheme licence holder monitoring.....	39
Division 1	Water quantity	39
225	Stream flow and storage water level data	39
226	Releases from storages	39
227	Announced allocations	40
228	Water taken by water users.....	40
229	Seasonal water assignment of water allocation	40
230	Critical water supply arrangements	40
231	Carryover.....	40
Division 2	Impact of storage operation and distribution of water on aquatic ecosystems	41
232	Water quality	41
233	Bank condition.....	41
234	Fish stranding.....	41
Division 3	Data transfer.....	41
235	Monitoring data must be made available.....	41
236	Transfer of data by distribution operations licence holders	41
	Scheme licence holder reporting.....	42

237	Reporting requirements	42
Division 1	Quarterly reporting	42
238	Quarterly report—resource operations licence holder	42
Division 2	Annual reporting	42
239	Annual report—resource operations licence holder	42
240	Annual report—water quantity monitoring	42
241	Annual report—impact of storage operation and distribution of water on aquatic ecosystems	43
Division 3	Operational reporting.....	44
242	Operational report—scheme licence holder	44
243	Operational report—resource operations licence holder	44
Division 4	Emergency reporting	44
244	Emergency report—scheme licence holder.....	44
245 to 256 section numbers not used		45
Chapter 11	Amendments to the Resource Operations Plan	46
257	Scope of chapter 11	46
258	Commencement of amendments under parts 1 and 2	46
Part 1	Amendments not requiring public notification.....	46
259	Scope of part 1	46
260	Amendment to implement an amendment to the Water Resource (Whitsunday) Plan 2010.....	46
261	Amendment to monitoring requirements	46
262	Amendment to infrastructure details.....	46
263	Amendment to chapter 4	47
264	Amendment to attachment 5	47
Part 2	Amendments requiring public notification	47
265	Scope of part 2	47
266	Amendments under the <i>Water Act 2000</i>	47
Part 3	Amendment to provide for deferred aspect.....	47
267	Scope of part 3	47
268	Amendments to provide for a deferred aspect	47
Attachment 1	Dictionary	48
Attachment 2	(a) Whitsunday Plan Area (showing subcatchments) and Whitsunday Water Management Area	50
Attachment 2	(b) Resource operations plan zones (supplemented water) for the Proserpine River Water Supply Scheme	51
Attachment 2	(c) Zone limits for resource operations plan zones (supplemented water).....	52
Attachment 3	Links between this plan and the Water Resource (Whitsunday) Plan 2010	56
Attachment 4	Infrastructure details	59

Part 1	Infrastructure operated by the resource operations licence holder	59
Part 2	Infrastructure operated by the distribution operations licence holder—Six Mile Creek Water Supply Board	60
Part 3	Infrastructure operated by the distribution operations licence holder—Kelsey Creek Water Board	60
Attachment 5	Resource and distribution operations licence holder responsibilities.....	61
Attachment 6	(a) Water Allocation Schedules	63
Part 1	Water allocations managed under the resource operations licence for the Proserpine River Water Supply Scheme.....	63
Part 2	Water allocations distributed under the distribution operations licence for Kelsey Creek Water Board and managed under the resource operations licence for the Proserpine River Water Supply Scheme	79
Part 3	Water allocations distributed under the distribution operations licence for Six Mile Creek Water Supply Board and managed under the resource operations licence for the Proserpine River Water Supply Scheme.....	84
Part 4	Water allocation distributed under the distribution operations licence for the Six Mile Creek Water Supply Board for the purpose of distribution loss and managed under the resource operations licence for the Proserpine River Water Supply Scheme	87
Part 5	Water allocation distributed under the distribution operations licence for the Kelsey Creek Water Board for the purpose of distribution loss and managed under the resource operations licence for the Proserpine River Water Supply Scheme	88
Attachment 7	Amending and granting of water licences to take unsupplemented water from a watercourse	89
Part 1	Existing water licences to be amended in subcatchments A, B and C (section 58)	89

Chapter 1 Preliminary

1 Short title

- (1) This resource operations plan may be cited as the Whitsunday Resource Operations Plan 2011¹.
- (2) References to ‘this plan’ within this document refer to the Whitsunday Resource Operations Plan 2011.

2 Commencement of the resource operations plan

This plan commences on the first business day after it is notified in the Queensland Government Gazette.

3 Purpose of plan

This plan implements the Water Resource (Whitsunday) Plan 2010.

4 Interpretation of words used in this plan

- (1) The dictionary in attachment 1 defines particular words used in this plan.
- (2) For this plan, the term scheme licence holder means—
 - (a) the resource operations licence holder for the Proserpine River Water Supply Scheme;
 - (b) the distribution operations licence holder within the Proserpine River Water Supply Scheme for Six Mile Creek Water Supply Board; and
 - (c) the distribution operations licence holder within the Proserpine River Water Supply Scheme for Kelsey Creek Water Board.

5 Plan area

This plan applies to the area shown as the plan area on the map in attachment 2(a).

6 Water to which this plan applies

- (1) This plan applies to the following water (surface water) in the plan area—
 - (a) water in a watercourse, lake or spring; and
 - (b) overland flow water.
- (2) This plan also applies to groundwater in the plan area.

7 Water management areas—Water Regulation 2002, section 56(4A)

The water management area for this plan is shown on the map in attachment 2(a).

8 Resource operations plan zones

- (1) Each zone shown on the map in attachment 2(b) is a resource operations plan zone (zone) for this plan.
- (2) Each zone includes—
 - (a) each part of a watercourse², lake or spring that lies within the zone; and

¹ Because of the size and complexity of this plan, some section numbers have been deliberately left blank. This will facilitate any plan amendments that may occur without the need for the whole plan to be renumbered.

² For Proserpine Zone A and Proserpine Zone B, groundwater in an aquifer under the Proserpine River under land adjacent (up to 200 metres either side of the watercourse) to the Proserpine River is declared to be water in the watercourse for the zones. Refer to section 6 of the Water Resource (Whitsunday) Plan 2010 for further clarification regarding groundwater declared to be water in a watercourse for this plan.

- (b) those sections of tributaries where there is access to flow or pondage from a watercourse or lake within the zone.

9 Information about areas, schemes and zones

- (1) The exact location of the boundaries of the plan area, water supply schemes, water management areas and zones are held in digital electronic form by the Department³.
- (2) The information held in digital electronic form can be reduced or enlarged to show the details of the boundaries.

10 Purpose of a water allocation

- (1) The water taken under a water allocation must be used only for the purpose stated on that water allocation.
- (2) Subsection (1) does not apply to water taken under a seasonal water assignment.

11 Metering

- (1) A meter, which complies with the standards approved by the chief executive, must be used to measure the volume of water taken under a water entitlement or seasonal water assignment in the plan area in accordance with section 21 of the Water Resource (Whitsunday) Plan 2010.
- (2) Subsection (1) applies—
 - (a) from the day the water entitlements are declared to be metered entitlements under the Water Regulation 2002, part 7; and
 - (b) in the circumstances mentioned in the Water Regulation 2002.
- (3) The resource operations licence holder for the Proserpine River Water Supply Scheme must meter, in accordance with standards approved by the chief executive, the taking of water under all water allocations managed under the resource operations licence, other than those water allocations referred to in subsection (4).
- (4) The distribution operations licence holders for the Proserpine River Water Supply Scheme must meter, in accordance with standards approved by the chief executive, the taking of water under all water allocations distributed under the distribution operations licence holder's distribution operations licence.

12 Departmental water monitoring data collection standards

- (1) Where this plan requires monitoring by a scheme licence holder, including measurement, collection, analysis and storage of data, the scheme licence holder must ensure the monitoring is consistent with the Water Monitoring Data Collection Standards.
- (2) The Water Monitoring Data Collection Standards may be reviewed and updated by the chief executive at any time.
- (3) The chief executive must notify the scheme licence holder at least 20 business days before any substantive changes are made to the Water Monitoring Data Collection Standards⁴.

13 Departmental water monitoring data reporting standards

- (1) Where this plan requires transfer of data or reporting by a scheme licence holder, the scheme licence holder must ensure the transfer or reporting is consistent with the Water Monitoring Data Reporting Standards⁵.

³ The information held in digital electronic form can be inspected at any of the department's offices.

⁴ The Water Monitoring Data Collection Standards can be inspected at any of the department's offices or accessed online at: <www.derm.qld.gov.au>

- (2) The Water Monitoring Data Reporting Standards may be reviewed and updated by the chief executive at any time.
- (3) The chief executive must notify the scheme licence holder at least 20 business days before any substantive changes are made to the Water Monitoring Data Reporting Standards.

14 Operating and environmental management rules and monitoring requirements

- (1) The operating and environmental management rules and monitoring requirements of this plan do not apply in situations where carrying out those rules and requirements would be unsafe to a person or persons.
- (2) Under circumstances where subsection (1) applies, the scheme licence holder—
 - (a) must comply with the reporting requirements for operational or emergency incidents; and
 - (b) may submit an interim program for implementing the rules and requirements under section 15 of this plan.

15 Implementation

- (1) The chief executive and scheme licence holder must implement the requirements of this plan as soon as is practicable, but no later than five years from the commencement of this plan.
- (2) Subsections (3) to (12) apply where a scheme licence holder is unable to meet the requirements of this plan on the day this plan commences.
- (3) The scheme licence holder must—
 - (a) within two months of commencement of this plan, submit a statement of programs currently in existence to the chief executive for approval; and
 - (b) within six months of commencement of this plan, submit a program for meeting the requirements of this plan to the chief executive for approval, including a timetable and interim methods to be used.
- (4) A scheme licence holder may, where an emergency or operational incident results in an inability to comply with the rules or requirements of this plan, submit an interim program for meeting the requirements of this plan to the chief executive for approval. The interim program must include a timetable and methods to be used.
- (5) Where a submitted program relates to the Water Monitoring Data Collection Standards, the program must include the accuracy of methods currently used.
- (6) The chief executive, in considering any submitted program, may request additional information.
- (7) Despite anything in subsections (2), (3) and (4), a scheme licence holder with an approved interim program may submit to the chief executive a revised program for consideration under subsection (8).
- (8) The chief executive, in considering a program referred to under this section, may either—
 - (a) approve the program with or without conditions;
 - (b) amend and approve the amended program; or
 - (c) require the scheme licence holder to submit a revised program.
- (9) Within 10 business days of making a decision on a program submitted under this section, the chief executive must notify the scheme licence holder of the decision.

⁵ The Water Monitoring Data Reporting Standards can be inspected at any of the department's offices or accessed online at: <www.derm.qld.gov.au>

- (10) Following approval of a program by the chief executive, the scheme licence holder must—
 - (a) implement and operate in accordance with, the approved program; and
 - (b) make public details of the approved program.
- (11) Where there is conflict between the provisions of this plan and the provisions of an approved program, the approved program prevails for the time that the approved program is in place.
- (12) Where this section applies, the scheme licence holder may continue to operate under the current program until the program submitted under this section is approved.

16 Sustainable management of water

This plan, in implementing the Water Resource (Whitsunday) Plan 2010, provides for the sustainable management of water by—

- (a) allowing for the allocation of water and contributing to the fair, orderly and efficient allocation of water to meet community needs by—
 - (i) stating a process for dealing with unallocated water;
 - (ii) regulating overland flow water;
 - (iii) regulating groundwater;
 - (iv) granting authorisations for the management of, taking of, and interfering with, water; and
 - (v) establishing water allocations that are tradeable and separate from land.
- (b) protecting the biological diversity and health of natural ecosystems and contributing to the protection and, where possible, reversal of degradation of water, watercourses, lakes, springs, aquifers, natural ecosystems and other resources by—
 - (i) detailing the operating and environmental management rules for the Proserpine River Water Supply Scheme;
 - (ii) detailing arrangements for the collection and assessment of data by the chief executive relating to the Water Resource (Whitsunday) Plan 2010 general and specific ecological outcomes;
 - (iii) detailing water and natural ecosystem monitoring responsibilities for the holder of the resource operations licence for the Proserpine River Water Supply Scheme; and
 - (iv) detailing water and natural ecosystem monitoring responsibilities for the holders of distribution operations licences for the Proserpine River Water Supply Scheme.
- (c) contributing to improving the confidence of water users regarding the availability and security of water entitlements by—
 - (i) stating a process for dealing with unallocated water;
 - (ii) regulating overland flow water;
 - (iii) regulating groundwater;
 - (iv) detailing the operating, environmental management and water sharing rules for the Proserpine River Water Supply Scheme;

- (v) detailing change rules for water allocations in the Proserpine River Water Supply Scheme;
 - (vi) detailing water and natural ecosystem monitoring responsibilities of the resource operations licence holder for the Proserpine River Water Supply Scheme;
 - (vii) detailing water and natural ecosystem monitoring responsibilities of the distribution operations licence holders for the Proserpine River Water Supply Scheme;
 - (viii) detailing processes for dealing with applications for water licences relating to—
 - (A) un-supplemented water in a watercourse, lake or spring; and
 - (B) overland flow water; and
 - (C) groundwater.
 - (ix) detailing arrangements for the collection and assessment of data by the chief executive relating to Water Resource (Whitsunday) Plan 2010 outcomes; and
 - (x) detailing stated amendments under section 106(b) of the *Water Act 2000* that can be made to this plan.
- (d) contributing to increasing community understanding and participation in the sustainable management of water by—
- (i) providing opportunities for community participation and submissions as part of plan development; and
 - (ii) clearly specifying rules and arrangements for the allocation and management of water in the plan area, including provision of explanatory notes that detail the intent and application of each section of this plan.

17 Addressing water resource plan outcomes

- (1) This plan addresses the Water Resource (Whitsunday) Plan 2010 outcomes by—
 - (a) specifying processes, rules and limits that are consistent with the environmental flow objectives and water allocation security objectives specified in the Water Resource (Whitsunday) Plan 2010; and
 - (b) providing monitoring and reporting arrangements to assist in the ongoing assessment of whether water management arrangements in the plan area will contribute to the achievement of Water Resource (Whitsunday) Plan 2010 outcomes.
- (2) Attachment 3 lists the outcomes of the Water Resource (Whitsunday) Plan 2010 and how the rules and requirements of this plan are linked to those outcomes.

18 to 28 section numbers not used

Chapter 2 Unallocated water

29 Scope of chapter 2

This chapter states the process for making available and dealing with unallocated water mentioned in section 27 of the Water Resource (Whitsunday) Plan 2010.

30 Record of volume of unallocated water

- (1) The chief executive may develop a register of the volume of unallocated water available.
- (2) This register must be updated after the granting of a water entitlement.

31 Requirement for information about land suitability

- (1) A submission for unallocated water where the water is proposed to be used for irrigation must be accompanied by information that demonstrates the potential suitability of the land for irrigation.
- (2) For this section, potential suitability of the land for irrigation means the potential of the land for sustainable irrigation having regard to the following matters that may constrain the extent and location of any irrigation development—
 - (a) the availability of land without remnant vegetation, including any occurrence of remnant vegetation;
 - (b) the occurrence of ecological assets and other high value environmental features such as wetlands;
 - (c) the suitability of the topography, including the slope of the land intended to be irrigated;
 - (d) any known cultural heritage sites; and
 - (e) the physical and chemical attributes of the soil.
- (3) In this section remnant vegetation has the meaning given by the *Vegetation Management Act 1999*.

32 Land and water management plan

If the use of water granted in accordance with this chapter is for irrigation, a land and water management plan⁶ must be prepared in accordance with the requirements of the *Water Act 2000* before the water can be used on the land.

Part 1 Unallocated water reserves

33 Unallocated water reserves

- (1) Unallocated water is reserved in the following reserves—
 - (a) general reserve; and
 - (b) strategic reserve.
- (2) At the time of plan commencement, the total volume of each reserve for each subcatchment area detailed in schedule 6 of the Water Resource (Whitsunday) Plan 2010 is shown in Table 1.

⁶ Refer to section 73(1)(a) and 73(1)(c) of *Water Act 2000*

Table 1: Total volume in reserve at the time of plan commencement

Reserved purpose	Volume (ML) by subcatchment area				
	A	B and C	D and E	F	Total
General reserve	0	9500	19 000	0	28 500
Strategic reserve	0	500	1000	0	1500
TOTAL					30 000

Part 2 Granting unallocated water from reserves

Division 1 Granting from general reserve and strategic reserve for state purposes

34 Process for granting unallocated water held as general reserve and strategic reserve for state purposes

The process for granting unallocated water must be in accordance with the requirements prescribed in part 2, division 1C of the Water Regulation 2002.

35 Unallocated water product specification

Where the chief executive decides to grant unallocated water, the water must only be granted as water licences.

Division 2 Terms and conditions for water licences

36 Water licences for taking water from a watercourse, lake or spring

A water licence to take water from a watercourse, lake or spring must be granted in accordance with Chapter 5, Part 2, Division 3, Subdivision 2 of the Water Resource (Whitsunday) Plan 2010.

37 Water licences for taking groundwater

A water licence to take groundwater must be granted in accordance with Chapter 5, Part 3, sections 75 - 77 of the Water Resource (Whitsunday) Plan 2010.

38 Water licences for taking overland flow water

A water licence for taking overland flow water—

- (a) must state the purpose for which water may be taken under the licence as either—
 - (i) rural; or
 - (ii) any.
- (b) must state at least one of the following terms and conditions—
 - (i) the maximum stored volume;
 - (ii) the maximum rate at which the water may be taken under the licence;
 - (iii) the daily volumetric limit for the licence;
 - (iv) the nominal entitlement;
 - (v) the annual volumetric limit for the licence; or
 - (vi) the mean annual volume for the licence.
- (c) may state the conditions for the licence, including flow conditions and conditions for storing water taken under the licence.

39 Additional condition for water licences granted for particular State purposes

Water licences granted from the strategic reserve for the following State purposes must include a condition on the licence that the authorisation to take the water returns to the State on the conclusion of—

- (a) a project of State significance; or
- (b) a project of regional significance.

40 to 49 section numbers not used

Chapter 3 Granting, converting and amending authorisations

Part 1 Granting of a resource operations licence

50 Resource operations licence

- (1) The chief executive must grant a resource operations licence to SunWater Limited for the Proserpine River Water Supply Scheme.
- (2) The infrastructure associated with the resource operations licence for the Proserpine River Water Supply Scheme is described in attachment 4, part 1.
- (3) Supplemented water allocations managed under the resource operations licence for the Proserpine River Water Supply Scheme are detailed in attachment 6(a), parts 1 to 5.

Part 2 Granting of a distribution operations licence

51 Distribution operations licence

- (1) The chief executive must grant a distribution operations licence to—
 - (a) Kelsey Creek Water Board; and
 - (b) Six Mile Creek Water Supply Board.
- (2) The infrastructure associated with the distribution operations licence granted to—
 - (a) Kelsey Creek Water Board is described in attachment 4, part 3; and
 - (b) Six Mile Creek Water Supply Board is described in attachment 4, part 2.
- (3) Water allocations distributed under the distribution operations licence, and managed under the resource operations licence, granted to—
 - (a) Kelsey Creek Water Board are described in attachment 6(a), parts 2 and 5; and
 - (b) Six Mile Creek Water Supply Board are described in attachment 6(a), parts 3 and 4.

Part 3 Converting to and granting of supplemented water allocations

52 Scope of part 3

This part sets out the rules for—

- (a) converting existing interim water allocations and the granting of supplemented water allocations in accordance with the schedule of water allocations in attachment 6(a), parts 1, 2 and 3;
- (b) granting of supplemented water allocations for the purpose of distribution loss to distribution operations licence holders in accordance with the schedule of water allocations in attachment 6(a), parts 4 and 5.

53 Rules for converting existing interim water allocations to supplemented water allocations

- (1) This section applies to the interim water allocations described in section 41 of the Water Resource (Whitsunday) Plan 2010.
- (2) The interim water allocations must be converted to supplemented water allocations as follows—
 - (a) the person granted the water allocation must be the person who holds the existing water authorisation from which the water allocation is converted;
 - (b) the location for the water allocation must be the zone that includes the place on a watercourse, lake or spring from which the water could be taken under the existing water authorisation;
 - (c) the purpose for the water allocation must be in accordance with section 45 of the Water Resource (Whitsunday) Plan 2010;
 - (d) the nominal volume for the water allocation must be in accordance with section 46(b) of the Water Resource (Whitsunday) Plan 2010;
 - (e) the priority group for the water allocation must be in accordance with section 47 of the Water Resource (Whitsunday) Plan 2010; and
 - (f) the nominal location for the water allocation at the commencement of the resource operations plan must be the same as the location for the water allocation.

54 Rules for granting supplemented water allocations for distribution loss

- (1) This section applies to the water authorisations described in section 42 of the Water Resource (Whitsunday) Plan 2010.
- (2) The chief executive must grant supplemented water allocations as follows—
 - (a) the entity granted the water allocation must be the distribution operations licence holder for—
 - (i) the authority area for the Kelsey Creek Water Board; and
 - (ii) the authority area for the Six Mile Creek Water Supply Board.
 - (b) the location for the water allocation must be Proserpine Zone A as shown in attachment 2(b).
 - (c) the purpose for the water allocation must be distribution loss in accordance with section 45(b) of the Water Resource (Whitsunday) Plan 2010;
 - (d) the nominal volume for the water allocation must be in accordance with section 46(a) of the Water Resource (Whitsunday) Plan 2010;
 - (e) the priority group for the water allocation must be priority group A1 in accordance with section 47(1)(c) of the Water Resource (Whitsunday) Plan 2010; and
 - (f) the nominal location for the water allocation for distribution loss at the commencement of the resource operations plan must be the same as the location for the water allocation for distribution loss.

55 Granting of supplemented water allocations

The chief executive must grant supplemented water allocations for—

- (a) existing interim water allocations converted under section 53 of this plan for the Proserpine River Water Supply Scheme – in accordance with attachment 6(a), parts 1, 2 and 3⁷; and
- (b) authorisations mentioned in section 54 of this plan for the Proserpine River Water Supply Scheme – in accordance with attachment 6(a), parts 4 and 5.

Part 4 Amending of water licences

56 Scope of part 4

This part gives effect to chapter 5, part 2, division 3, subdivision 2 of the Water Resource (Whitsunday) Plan 2010 for water licences to take unsupplemented water in a watercourse, lake or spring in subcatchments A, B and C.

57 Amending a water licence for taking unsupplemented water

When amending a water licence for taking unsupplemented water from a watercourse, lake or spring in accordance with section 217 or section 218 of the *Water Act 2000*, the chief executive must amend the water licence to state—

- (a) the purpose for which water may be taken under the water licence as determined under section 62 of the Water Resource (Whitsunday) Plan 2010;
- (b) the maximum rate at which water may be taken under the water licence as determined under section 63 of the Water Resource (Whitsunday) Plan 2010;
- (c) the daily volumetric limit for the water licence as determined under section 64 of the Water Resource (Whitsunday) Plan 2010;
- (d) the nominal entitlement for the water licence as determined under section 65 of the Water Resource (Whitsunday) Plan 2010; and
- (e) any conditions relating to flow conditions imposed on the water licence as determined under section 66 of the Water Resource (Whitsunday) Plan 2010.

58 Amending existing water licences for taking unsupplemented water

- (1) This section applies to water licences listed in attachment 7, part 1 of this plan.
- (2) Within 120 business days of the commencement of this plan, the chief executive, in accordance with section 217 of the *Water Act 2000*, must amend each water licence to which this section applies.
- (3) Each water licence amended under this section must include the terms and conditions as detailed for the water licence in attachment 7, part 1 of this plan.

⁷ Converted water authorisations automatically expire under section 121 of the *Water Act 2000*.

Part 5 Granting a resource operations licence or distribution operations licence to meet future water requirements

59 Scope of part 5

This part states a process for section 108 of the *Water Act 2000* for the granting of a resource operations licence or distribution operations licence to meet future water requirements.

60 Applying for a resource operations licence or distribution operations licence

- (1) This section applies to the proposed owner of infrastructure for a—
 - (a) project of State significance; or
 - (b) project of regional significance.
- (2) The chief executive may give notice to the proposed owner that the proposed owner must apply to the chief executive for a resource operations licence or distribution operations licence.
- (3) The application must—
 - (a) be in the approved form;
 - (b) include the following—
 - (i) details of the proposed infrastructure;
 - (ii) an assessment of the impact of constructing the infrastructure on—
 - (A) the supply of water managed under any existing resource operations licence;
 - (B) the operating arrangements under existing resource operations licence;
 - (C) existing water licences to take water;
 - (D) other existing authorisations, other than water permits, that may be affected by the proposed infrastructure;
 - (iii) the applicant's proposal for minimising the impact assessed and mentioned in subsection (ii);
 - (iv) proposed operating arrangements for the infrastructure;
 - (v) for projects of State significance—written evidence of approval by the Coordinator-General that the applicant is the proponent of the infrastructure;
 - (vi) for projects of regional significance—written evidence of approval by the chief executive that the applicant is the proponent of the infrastructure;
 - (vii) any other information the applicant considers will enable the chief executive to decide the application; and
 - (c) be accompanied by the prescribed fee.
- (4) The chief executive may give a copy of the application to any entity the chief executive considers appropriate.

61 Additional information may be required

- (1) The chief executive may, by notice, require—
 - (a) the applicant to give additional information about the application; or

- (b) any information included in the application, or any additional information required under subsection (a) to be verified by statutory declaration.
- (2) An applicant must provide information where requested, within the time requested otherwise the application will lapse.

62 Matters the chief executive must consider

- (1) In deciding the application, the chief executive must consider—
 - (a) the application and any additional information given about the application;
 - (b) any conditions which are appropriate for the application if it were to be approved and granted; and
 - (c) the public interest.
- (2) Subsection (1) does not limit the matters the chief executive may consider.

63 Deciding an application for a resource operations licence or distribution operations licence

- (1) Where satisfied the application should be approved, the chief executive must approve the application either—
 - (a) wholly, or in part; and
 - (b) with or without conditions.
- (2) Where the chief executive is not satisfied that the application should be approved, the chief executive must, within 30 business days of deciding the application, notify the applicant.

Part 6 Amending a resource operations licence or distribution operations licence to meet future water requirements

64 Scope of this part

This part applies to amending a resource operations licence or distribution operations licence other than where an amendment of the resource operations licence or distribution operations licence is required under section 111 of the *Water Act 2000*.

Division 1 Amendment by the chief executive—*Water Act 2000*, section 111A

65 Amending a resource operations licence or a distribution operations licence by chief executive

- (1) The chief executive may, at any time, amend a resource operations licence or distribution operations licence.
- (2) Before the chief executive acts under subsection 1, the chief executive must give the holder of the resource operations licence or distribution operations licence notice of the proposed amendment.
- (3) The notice must—
 - (a) state the following—
 - (i) a summary of the proposed amendment;
 - (ii) the reasons for the proposed amendment;
 - (iii) that written submissions may be made by the holder about the proposed amendment; and

- (iv) the day by which, the person to whom, and the place where, the submissions must be made.
- (b) include a copy of the proposed amendment.
- (4) The day stated under subsection (3)(a)(iv) must be at least 30 business days after the day the notice is given.

66 Matters chief executive must consider

- (1) Prior to deciding whether to amend a resource operations licence or distribution operations licence, the chief executive must consider—
 - (a) any requirements specified under the Water Resource (Whitsunday) Plan 2010; and
 - (b) any submissions made by the resource operations licence or distribution operations licence holder about the proposed amendment.
- (2) Subsection (1) does not limit the matters the chief executive may consider.

67 Deciding whether to amend a resource operations licence or distribution operations licence

- (1) The chief executive may decide to amend a resource operations licence or distribution operations licence—
 - (a) wholly, or in part; and
 - (b) with or without conditions.
- (2) In amending a resource operations licence or distribution operations licence under this section, the chief executive must comply with the requirements of section 111A of the *Water Act 2000*.
- (3) Where the chief executive decides not to amend a resource operations licence or distribution operations licence, the chief executive must, within 30 business days of the decision being made, notify the resource operations licence or distribution operations licence holder.

Division 2 Amendment requested by the scheme licence holder— *Water Act 2000*, section 111A

68 Amending a resource operations licence or distribution operations licence on application by holder

- (1) The holder of the resource operations licence or distribution operations licence may make an application to the chief executive requesting an amendment of the licence.
- (2) The application must—
 - (a) be in the approved form;
 - (b) include a summary of the amendment required and the reasons for the amendment; and
 - (c) be accompanied by the prescribed fee.
- (3) The chief executive may give a copy of the application, and any submissions, to any entity the chief executive considers appropriate.

69 Additional information may be required

- (1) The chief executive may, by notice, require—
 - (a) the holder to give additional information about the application; or

- (b) any information included in the application, or any additional information required under subsection (a) to be verified by statutory declaration.
- (2) If the holder does not, without reasonable excuse, comply with the requirement within the reasonable time stated in the notice, the application lapses.

70 Matters chief executive must consider

- (1) For deciding the application, the chief executive must consider—
 - (a) any requirements specified under the Water Resource (Whitsunday) Plan 2010;
 - (b) any additional information given about the application; and
 - (c) any information provided to the chief executive from entities referred to in section 69(3).
- (2) Subsection (1) does not limit the matters the chief executive may consider.

71 Deciding whether to amend a resource operations licence or distribution operations licence

- (1) Where the chief executive is satisfied that the application to amend a resource operations licence or distribution operations licence should be approved, the chief executive must approve the application—
 - (a) wholly, or in part; and
 - (b) with or without conditions.
- (2) In amending a resource operations licence or distribution operations licence under this section, the chief executive must comply with the requirements of section 111A of the *Water Act 2000*.
- (3) Where the chief executive is not satisfied that the resource operations licence or distribution operations licence should be amended, the chief executive must, within 30 business days of the decision being made, notify the holder.

72 to 87 section numbers not used

Chapter 4 Proserpine River Water Supply Scheme

88 Scope of chapter 4

This chapter applies to—

- (a) the scheme licence holders; and
- (b) all water allocations associated with the Proserpine River Water Supply Scheme.

89 Scheme licence holder responsibilities

- (1) Attachment 5 sets out the responsibilities of the scheme licence holders.
- (2) Where attachment 5 indicates that the scheme licence holders have responsibility for implementing rules and requirements of this plan—
 - (a) the distribution operations licence holders are responsible for implementing rules and requirements of this plan that relate to the water allocations to which the distribution operations licence holders distribute water; and
 - (b) the resource operations licence holder is responsible for implementing rules and requirements of this plan that relate to all other water allocations within the Proserpine River Water Supply Scheme.

Part 1 Operating and environmental management rules

90 Use of watercourses for distribution

The scheme licence holder must only use the watercourses listed in Table 2 for the distribution of water.

Table 2. Watercourses authorised for use for distribution of water

Name	Description
Proserpine River	The part of the Proserpine River from, and including, the impounded area of Peter Faust Dam (AMTD 57.7 km) downstream to Node 2 ⁸ (Proserpine River AMTD 25.7 km)
La-di-da Creek	The part of La-di-da Creek from AMTD 1.2 km, the outlet works of the Kelsey Creek Water Board channel, to AMTD 0.0 km, its junction with Kelsey Creek.
Kelsey Creek	The part of Kelsey Creek from AMTD 3.1 km, its junction with La-di-da Creek, to AMTD 0.0 km, its junction with Lethe Brook.
Lethe Brook	The part of the Lethe Brook from AMTD 33.4 km, its junction with Kelsey Creek, to AMTD 17.5 km, the limit of the Kelsey Creek Water Board's authority area.
Six Mile Creek	The part of the Six Mile Creek from AMTD 12.1 km, the outlet of the Six Mile Creek Water Supply Board channel, and AMTD 5.0 km, the limit of the board's authority area.

⁸ At the Declared Downstream Limit of the Proserpine River (API17409).

91 Operating levels of Peter Faust Dam

- (1) The operating levels for Peter Faust Dam are specified in attachment 4, part 1.
- (2) The resource operations licence holder must not release water from the dam unless the release is necessary to supply water to a water allocation holder or a distribution operations licence holder; and
- (3) Despite subsection (2) the resource operations licence holder must not release or supply water from the dam when the water level in the dam is at or below its minimum operating level.

92 Change in rate of release from Peter Faust Dam

- (1) The resource operations licence holder must minimise the occurrence of adverse environmental impacts (for example, fish stranding and bank slumping) by ensuring that any reduction or increase in the rate of release of water from Peter Faust Dam occurs incrementally.
- (2) The resource operations licence holder must prepare and maintain operating procedures that demonstrate that arrangements are in place to ensure that the requirements under subsection (1) are met.

93 Quality of water downstream of Peter Faust Dam

- (1) When making a release from Peter Faust Dam, the resource operations licence holder must draw water from the off-take level that optimises the quality of water released.
- (2) The resource operations licence holder must prepare and maintain operating procedures that demonstrate that arrangements are in place to ensure that the requirements under subsection (1) are met.

Part 2 Water sharing rules

94 Announced allocation

- (1) The resource operations licence holder must—
 - (a) determine an announced allocation for each priority group for use in defining the share of water available to be taken under water allocations in that priority group;
 - (b) use the water sharing rules specified in this part, to calculate announced allocations throughout the water year;
 - (c) calculate and set the announced allocation for each priority group to take effect on the first day of each water year;
 - (d) following the commencement of a water year—
 - (i) recalculate the announced allocation for priority group A to take effect no later than five business days following the first day of every month, except where the announced allocation for priority group A has already been announced as being 100 per cent since the commencement of the water year; and
 - (ii) recalculate the announced allocation for priority group A1 to take effect no later than five business days following the first day of every month, except where the announced allocation for priority group A1 has already been announced as being 100 per cent since the commencement of the water year; and

- (iii) recalculate the announced allocation for priority group A2 to take effect no later than five business days following the first day of every month, except where the announced allocation for priority group A2 has already been announced as being 90 per cent since the commencement of the water year; and
 - (iv) recalculate the announced allocation for priority group A3 to take effect no later than five business days following the first day of every month, except where the announced allocation for priority group A3 has already been announced as being 75 per cent since the commencement of the water year; and
 - (v) reset the announced allocation if a recalculation indicates that the calculated announced allocation would—
 - (A) increase by five or more percentage points; or
 - (B) increase to 100 per cent for priority groups A or A1; or
 - (C) increase to 90 per cent for priority group A2; or
 - (D) increase to 75 per cent for priority group A3;
 - (e) make public, using the holder's website, the details of the announced allocation, including parameters for determining the announced allocation, for the Proserpine River Water Supply Scheme, within five business days of—
 - (i) setting an announced allocation under subsection (1)(c); or
 - (ii) the first calendar day of every month when resetting the announced allocation under subsection (1)(c)(ii).
- (2) The announced allocation must—
- (a) not be less than zero; and
 - (b) for priority group A and A1, not be greater than 100 per cent; and
 - (c) for priority group A2, not be greater than 90 per cent; and
 - (d) for priority group A3, not be greater than 75 per cent; and
 - (e) be rounded to the nearest per cent; and
 - (f) not be reduced during a water year.

95 Calculation of announced allocation for high priority and medium priority water allocations

- (1) A water allocation belonging to—
- (a) priority group A is a high priority water allocation;
 - (b) priority group A1 is a medium priority water allocation;
 - (c) priority group A2 is a medium priority water allocation; and
 - (d) priority group A3 is a medium priority water allocation.
- (2) The resource operations licence holder must determine the announced allocation for each priority group using the formulas set out in Table 3 as follows—
- (a) priority group A water allocations—formula 1;
 - (b) priority group A1 water allocations—formula 2;
 - (c) priority group A2 water allocations—formula 3; and

- (d) priority group A3 water allocations—formula 4.

Table 3. Announced allocation formulae

Formula Number	Formula
1	$100 \times \frac{(UV - TOAH - CO + DIVH)}{H}$
2	$100 \times \frac{(UV - H - RE - TOA - CO + DIV)}{M}$
3	$90 \times \frac{(UV - H - RE - TOA - CO + DIV)}{M}$
4	$75 \times \frac{(UV - H - RE - TOA - CO + DIV)}{M}$

96 Calculation of announced allocation for water allocations changed from priority group A1 to priority group A

- (1) This section applies to water allocations that have changed, under section 108 of this plan, from priority group A1 to priority group A since the announced allocation for priority group A1 allocations was last at 100 per cent.
- (2) Despite section 95, the resource operations licence holder must determine the announced allocation for the water allocations applicable to this section as if those water allocations mentioned in subsection (1) were not changed from the priority group A1.

97 Announced allocation parameters

The parameters used in the announced allocation formulas are defined in Table 4.

Table 4. Announced allocation parameters—Proserpine River Water Supply Scheme

Term	Definition
<p>UV Usable volume Proserpine River Water Supply Scheme (ML)</p>	<p>UV is the usable storage volume of Peter Faust Dam after seepage/evaporation losses and the minimum operating volume have been taken into account.</p> <p>$UV = AV - MOV$</p> <p>AV is the Adjusted Storage Volume after taking into account seepage and evaporation losses. AV is the volume represented on the storage curve at the Adjusted Storage Level (ASL). The storage curve for Peter Faust Dam that is to be used is listed in attachment 4, part 1.</p> <p>ASL is the Current Storage Level (CSL) less the projected Storage Loss Depth for the remainder of the water year (SLD). ($ASL = CSL - SLD$). CSL is the current standing water level (AHD) in the storage. The SLD to be used for each month is given in Table 5.</p> <p>MOV is the Minimum Operating Volume of Peter Faust Dam.</p>
<p>RE Reserve for high priority water allocations (ML)</p>	<p>RE is 1.8 times the total nominal volume of high priority water allocations. RE is the volume of water reserved to provide future water supply of high priority water allocations. This reserve includes provision for storage and river transmission losses. The total RE is sufficient to provide 12 months supply of high priority water allocations beyond the end of the current water year.</p>
<p>CO Carryover (ML)</p>	<p>CO is the volume of water carried over from the unused portion of entitlements at the end of the previous water year. CO must be set back to zero once any of the triggers in section 98(6) occur.</p>
<p>TOAH Transmission and operational allowance for high priority water allocations (ML)</p>	<p>TOAH is an allowance for the transmission and operational losses expected to occur in delivering high priority water allocations through the system to the end of the water year. TOAH is determined using Table 6.</p>
<p>TOA Transmission and operational allowance for water allocations (ML)</p>	<p>TOA is an allowance for the transmission and operational losses expected to occur in delivering both high and medium priority allocations through the system to the end of the water year. TOA varies with the announced allocation for the medium priority water allocations. Table 7 figures are to be used for all medium priority groups (Priority group A1, A2, and A3). Determining TOA is to be done by making a linear interpolation of the figures in Table 7.</p>
<p>DIVH High priority diverted volume (ML)</p>	<p>DIVH is the volume of water taken under high priority water allocations in a water year up to the time of assessment of the announced allocation.</p>
<p>DIV Diverted volume (ML)</p>	<p>DIV is the total volume of water taken under high and medium priority water allocations in a water year up to the time of assessment of the announced allocation.</p>
<p>H High priority water allocations (ML)</p>	<p>H is the total nominal volume of high priority water allocations. High priority water allocations belong only to priority group A.</p>
<p>M Medium priority water allocations (ML)</p>	<p>M is the total nominal volume of medium priority water allocations belonging to priority groups A1, A2 and A3 which can be supplied under announced allocation. M is the sum of:</p> <ul style="list-style-type: none"> a) 100% of the total nominal volumes for priority group A1; and b) 90% of the total nominal volumes for priority group A2; and c) 75% of the total nominal volumes for priority groups A3.

Table 5. Projected storage loss depths—Proserpine River Water Supply Scheme

Month in which announced allocation is calculated	Projected storage loss depth in millimetres until end of water year for Peter Faust Dam
July	2089
August	1965
September	1819
October	1648
November	1442
December	1225
January	998
February	784
March	602
April	414
May	253
June	116

Table 6. Transmission and operational allowance for high priority water allocations — Proserpine River Water Supply Scheme

Transmission and operation allowance (TOAH) (ML)											
Jul	Aug	Sep	Oct	Nov	Dec	Jan	Feb	Mar	Apr	May	Jun
7333	6747	6160	5573	4913	4253	3593	2933	2347	1760	1173	587

Table 7. Transmission and operational allowance for medium priority water allocations—Proserpine River Water Supply Scheme

Announced allocation (%)	Transmission and operation allowance (TOA) (ML)											
	Jul	Aug	Sep	Oct	Nov	Dec	Jan	Feb	Mar	Apr	May	Jun
0	7333	6747	6160	5573	4913	4253	3593	2933	2347	1760	1173	587
20	9205	8562	7882	7146	6486	5545	4267	3420	2758	2022	1286	643
40	11077	10378	9604	8718	8058	6836	4941	3907	3170	2284	1398	699
60	12949	12193	11326	10290	9630	8128	5615	4393	3582	2546	1510	755
80	14820	14009	13048	11862	11202	9419	6289	4880	3994	2808	1623	811
100	16692	15825	14770	13435	12775	10711	6962	5367	4406	3070	1735	867

98 Carry over

- (1) The resource operations licence holder may, subject to this section, allow a water user to carryover part of the water user's unused water from one water year to the next water year.
- (2) Carry over of medium priority water is permitted if at the start of the water year, the level in Peter Faust Dam is at, or above, 75.5m AHD.
- (3) The total volume of unused water for the scheme that is permitted to be carried over to the next water year must be the lesser of—
 - (a) 25 per cent of the total nominal volume for the scheme; and
 - (b) 90 per cent of the total volume of unused water for the scheme at the end of the water year.
- (4) The resource operations licence holder must make public, using the holder's website, the methodology for determining the volume of water permitted to be carried over by each water user in the event that the volume determined under subsection (3)(b) exceeds the volume determined under subsection (3)(a) of this section.
- (5) The volume of water that may be carried over by a water user must not be more than 90 per cent of the water user's unused volume at the end of the water year.
- (6) Any volume of water that is carried over into a water year, and that is unused at the date of any of the following events, must be deducted from the volume of water available to the water user—
 - (a) after six months into the commencement of the water year; or
 - (b) when Peter Faust Dam spills.

99 Taking water under a water allocation

- (1) The total volume of water taken under a water allocation in a water year must not exceed the nominal volume of the water allocation multiplied by the announced allocation and divided by 100.
- (2) Subsection (1) does not include the volume of water permitted to be carried over from the previous water year as specified in section 98.

100 Critical water supply arrangements

- (1) The resource operations licence holder may prepare and submit critical water supply arrangements to the chief executive for approval at any time.
- (2) The critical water supply arrangements must—
 - (a) be developed with participation from local government, distribution operations licence holders, stakeholders and the community;
 - (b) include triggers for commencement and cessation of the arrangements;
 - (c) include a monitoring and reporting schedule; and
 - (d) consider the options for facilitating the transfer of water to water accounts held or managed by essential services, industry and basic per capita consumption (excluding water for use outside of the home).
- (3) The chief executive, in assessing the arrangements, may either—
 - (a) request further information;
 - (b) approve the critical water supply arrangements with or without conditions; or

- (c) require the resource operations licence holder to submit revised critical water supply arrangements.
- (4) The resource operations licence holder must make public, using the holder's website, the critical water supply arrangements and any conditions, once approved by the chief executive.
- (5) Where the chief executive approves the critical water supply arrangements under this section, the chief executive must amend this plan in accordance with section 263(2).

101 Commencement and cessation of critical water supply arrangements

- (1) This section applies if critical water supply arrangements have been approved by the chief executive under section 100(3)(b) of this plan.
- (2) When the commencement triggers in the critical water supply arrangements are met, the critical water supply arrangements apply and the relevant sections of this plan cease to apply for the period that the critical water supply arrangements apply.
- (3) When the cessation triggers in the critical water supply arrangements are met the provisions of this plan apply.

102 Changing the critical water supply arrangements

- (1) The resource operations licence holder may submit proposed changes to the critical water supply arrangements to the chief executive at any time.
- (2) The chief executive, in assessing or deciding on proposed changes to the critical water supply arrangements submitted under subsection (1), may—
 - (a) request further information;
 - (b) approve the proposed changes with or without conditions;
 - (c) amend and approve the amended changes; or
 - (d) refuse the proposed changes.
- (3) Where the chief executive approves changes to the critical water supply arrangements under this section, the chief executive must amend this plan in accordance with section 263(2).
- (4) The chief executive may amend the approved critical water supply arrangements, or require the resource operations licence holder to submit a proposal for revised critical water supply arrangements at any time.

Part 3 Dealing with water allocations

Division 1 Subdivision or amalgamation of water allocations

103 Permitted subdivisions or amalgamations

- (1) Subdivision of a water allocation is permitted where—
 - (a) the sum of the nominal volumes of the new water allocations is equal to the nominal volume of the water allocation that is being subdivided; and
 - (b) the location, nominal location and priority group of the new water allocations are the same as those of the water allocation that is being subdivided.
- (2) Amalgamation of water allocations is permitted where—
 - (a) the nominal volume of the new water allocation is equal to the sum of the nominal volumes of the water allocations that are being amalgamated; and

- (b) the location, nominal location and priority group of the water allocations that are being amalgamated are the same.

104 Prohibited subdivisions or amalgamations

- (1) Subdivision of a water allocation is prohibited where—
 - (a) the sum of the nominal volumes of the new water allocations is not equal to the nominal volume of the water allocation that is being subdivided; and
 - (b) the location, nominal location and priority group of the new water allocations are not the same as those of the water allocation that is being subdivided.
- (2) Amalgamation of water allocations is prohibited where—
 - (a) the nominal volume of the new water allocation is not equal to the sum of the nominal volumes of the water allocations that are being amalgamated; and
 - (b) the location, nominal location and priority group of the water allocations that are being amalgamated are the not same.

Division 2 Water allocation change rules

105 Scope of division 2

This division provides for changes to water allocations managed under a resource operations licence that are permitted changes, prohibited changes, assessed changes and other changes.

Subdivision 1 Permitted changes

106 Location

- (1) A change to the location for the taking of water under a water allocation is permitted provided the change would not result in a total nominal volume for a priority group in a zone that—
 - (a) exceeds the maximum specified in Table 8; or
 - (b) is less than the minimum specified in Table 8.
- (2) For this section, the total nominal volume for a priority group in a zone is the total nominal volume of all water allocations of the same priority group—
 - (a) for the zone; and
 - (b) for which relevant current change certificates have been issued under section 129 of the *Water Act 2000*.
- (3) Subject to subsection (1)—
 - (a) where a change results in the location of a medium priority water allocation moving from Proserpine Zone C or Proserpine Zone D to Proserpine Zone A or Proserpine Zone B—the medium priority water allocation must also be changed to priority group A1;
 - (b) where a change results in the location of a medium priority water allocation moving from Proserpine Zone A or Proserpine Zone B to Proserpine Zone C—the medium priority water allocation must also be changed to priority group A2; or
 - (c) where a change results in the location of a medium priority water allocation moving from Proserpine Zone A or Proserpine Zone B to Proserpine Zone D—the medium priority water allocation must also be changed to priority group A3.

- (4) Subject to subsection (1)—a change to the location for the taking of water under a water allocation is permitted provided the change would result in the location being the same as the nominal location on the water allocation.
- (5) For a medium priority water allocation subject to a permitted change of location, a new nominal volume for that medium priority water allocation must be determined in the following way—
 - (a) the nominal volume, in megalitres, for a water allocation located in Proserpine Zone A or Proserpine Zone B that would be located in—
 - (i) Proserpine Zone C—must be divided by 0.90 and rounded down to the nearest whole number; or
 - (ii) Proserpine Zone D—must be divided by 0.75 and rounded down to the nearest whole number.
 - (b) the nominal volume, in megalitres, for a water allocation located in Proserpine Zone C that would be located in—
 - (i) Proserpine Zone A or Proserpine Zone B—must be multiplied by 0.90 and rounded down to the nearest whole number; or
 - (ii) Proserpine Zone D—must be multiplied by 1.20 and rounded down to the nearest whole number.
 - (c) the nominal volume, in megalitres, for a water allocation located in Proserpine Zone D that would be located in—
 - (i) Proserpine Zone A or Proserpine Zone B—must be multiplied by 0.75 and rounded down to the nearest whole number; or
 - (ii) Proserpine Zone C—must be divided by 1.20 and rounded down to the nearest whole number.
 - (d) the nominal volume, in megalitres, for a water allocation located in Proserpine Zone A that would be located in Proserpine Zone B, or for a water allocation located in Proserpine Zone B that would be located in Proserpine Zone A—must be multiplied by 1.00.

Table 8. Permitted distributions in the Proserpine River Water Supply Scheme

Priority group		Volume	Zone			
			Proserpine A	Proserpine B	Proserpine C	Proserpine D
High priority group water allocations	A	Minimum total nominal volume (ML)	6357	5643	0	0
		Maximum total nominal volume (ML)	16 357	15 643	0	0
Medium priority group water allocations	A1	Minimum total nominal volume (ML)	0	5000	0	0
		Maximum total nominal volume (ML)	27 426	36 142	0	0
	A2	Minimum total nominal volume (ML)	0	0	0	0
		Maximum total nominal volume (ML)	0	0	3000	0
	A3	Minimum total nominal volume (ML)	0	0	0	0
		Maximum total nominal volume (ML)	0	0	0	10 000

107 Nominal location

A change to the nominal location for the taking of water under a water allocation is permitted to give effect to a change to the location for the taking of water made under section 106 of this plan.

108 Priority group

- (1) A change to the priority group of a water allocation is permitted if the total nominal volume for priority group A water allocations supplied under the resource operations licence would be—
 - (a) equal to or less than 22 000 ML; and
 - (b) equal to or greater than 12 000 ML.
- (2) For subsection 1, the total nominal volume for priority group A1 water allocations is the total nominal volume of all priority group A1 water allocations, including priority group A1 water allocations for which relevant valid change certificates that have been issued under section 129 of the *Water Act 2000*.
- (3) Subject to subsection (1), a change to the priority group of a water allocation from priority group A to priority group A1 is permitted where the new nominal volume, in megalitres, is calculated by multiplying the existing nominal volume by 1.3 and rounding down to the nearest whole number.
- (4) Subject to subsection (1), a change to the priority group of a water allocation from priority group A1 to priority group A is permitted where the new nominal volume, in megalitres, is calculated by dividing the existing nominal volume by 1.3 and rounding down to the nearest whole number.

109 Purpose

A change to the purpose of a water allocation is permitted where the change in purpose is from—

- (a) ‘any’ to ‘rural’; or
- (b) ‘rural’ to ‘any’.

Subdivision 2 Prohibited changes

110 Prohibited changes

(1) The following changes are prohibited—

- (a) a change to the location for the taking of water under a water allocation if the change would result in a total nominal volume for a priority group in a zone that—
 - (i) exceeds the maximum specified in Table 8; or
 - (ii) is less than the minimum specified in Table 8.
- (b) a change to a location that is not a zone listed in Table 8;
- (c) a change to location that is not consistent with section 106;
- (d) a change to the priority group of a water allocation from priority group A to priority group A1 that would result in a nominal volume which differs from the result of the conversion specified in section 108(3);
- (e) a change to the priority group of a water allocation from priority group A1 to priority group A that would result in a nominal volume which differs from the result of the conversion specified in section 108(4);
- (f) a change to the priority group of a water allocation that would result in the total nominal volume for priority group A water allocations supplied under the resource operations licence being—
 - (i) greater than 22 000 ML;
 - (ii) less than 12 000 ML.
- (g) a change that would result in the nominal volume of the new water allocation not being expressed as a whole number unless an existing water allocation to be changed specifies a nominal volume that is not a whole number; and
- (h) a change to a priority group that is not specified in the Water Resource (Whitsunday) Plan 2010.

(2) For this section, the total nominal volume in a zone is the total nominal volume of all water allocations of the same priority group for that zone.

Subdivision 3 Assessed changes to water allocations

111 Change of purpose from ‘distribution loss’

- (1) The holder of a water allocation that states the purpose as ‘distribution loss’ may apply to the chief executive under section 129A of the *Water Act 2000* to change the purpose of the water allocation to ‘any’ or ‘rural’.
- (2) The water allocation holder must provide a report with the application that demonstrates—
 - (a) that there is sufficient volume held under water allocations to provide for distribution losses within the system;

- (b) that the proposed change meets the Water Resource (Whitsunday) Plan 2010 objectives; and
- (c) any other matters the chief executive considers appropriate, including, but not limited to—
 - (i) the scheme licence holder has achieved a permanent efficiency gain in the distribution of water within the associated delivery system; and
 - (ii) the reduction in distribution losses specified as an annual volume that will result directly from the works or operational changes.
- (3) The chief executive must consider the information supplied by the applicant under subsection (2) in deciding the application under section 134 of the *Water Act 2000*.

Subdivision 4 Other changes to water allocations

112 Application for changes not specified as permitted or prohibited

An application for a change to a water allocation that is not specified as permitted, prohibited or assessed may be made in accordance with section 130 of the *Water Act 2000*.

Part 4 Seasonal water assignment rules

113 Maximum water use

For this part—

- (a) the maximum volume of water that may be taken in a zone in a water year for the Proserpine River Water Supply Scheme is the maximum allowable water use volume indicated in Table 9 for each zone; and
- (b) the total water use in a zone is the total volume of water used under water allocations for all priority groups managed and distributed by the resource operation licence holder and distribution operation licence holder for the zone.

Table 9. Maximum allowable water use volumes for the Proserpine River Water Supply Scheme

Zone	Maximum allowable water use volumes (ML)
Proserpine A	43 783
Proserpine B	51 785
Proserpine C	4500
Proserpine D	15 000

114 Seasonal water assignment rules

- (1) The holder of a water allocation to which this part applies may enter into an arrangement for a seasonal water assignment in relation to the water allocation under section 146B of the *Water Act 2000* only if—
 - (a) the total water use in a water year for each zone does not exceed the maximum allowable water use volume specified in Table 9 for each zone;
 - (b) the holder of the resource operations licence consents to the arrangement; and
 - (c) the water to which the allocation relates is distributed to the allocation holder by a distribution operations licence holder—the holder of the distribution operations licence consents to the arrangement.

- (2) Where the holder of a water allocation with a purpose of ‘distribution loss’ enters into an arrangement to seasonally assign part of that water allocation, the holder must ensure sufficient volume remains under the water allocation to provide for distribution losses within the system.
- (3) The scheme licence holder must notify the other scheme licence holder(s) of when consent of any seasonal water assignment is given in accordance with subsection (1) if—
 - (a) the water allocation being seasonally assigned is from Proserpine Zone A or Proserpine Zone B; and
 - (b) the location of the seasonal assignment is either Proserpine Zone C or Proserpine Zone D.
- (4) The scheme licence holder must notify the other scheme licence holder(s) of when consent of any seasonal water assignment is given in accordance with subsection (1) if—
 - (a) the water allocation being seasonally assigned is from Proserpine Zone C or Proserpine Zone D; and
 - (b) the location of the seasonal assignment is either Proserpine Zone A or Proserpine Zone B.
- (5) The distribution licence holder must notify the other distribution licence holder of when consent of any seasonal water assignment is given in accordance with subsection (1) if—
 - (a) the water allocation being seasonally assigned is from either Proserpine Zone C or Proserpine Zone D; and
 - (b) the location of the seasonal assignment is Proserpine Zone C or Proserpine Zone D.

115 to 175 section numbers not used

Chapter 5 Chapter not used

Chapter 6 Chapter not used

Chapter 7 Dealing with Water Licence Applications

176 Scope of chapter 7

- (1) This chapter states the process for dealing with an application for a—
 - (a) water licence to take or interfere with water from a watercourse, lake or spring; and
 - (b) water licence to take groundwater or overland flow water.

177 Water licence applications to which this chapter applies

- (1) This chapter applies to each application for a water licence made under section 206 of the *Water Act 2000* if granting the application would have one or more of the following effects on water to which this plan applies—
 - (a) increase the annual volume of the water allowed to be taken under authorisations;
 - (b) increase the nominal entitlement for taking water under the licence, if any;
 - (c) increase the maximum area to be irrigated under authorisations;
 - (d) increase the interference with the water;
 - (e) increase the daily, monthly or quarterly volumetric limit for taking water under the licence, if any;
 - (f) change the location from which water may be taken;
 - (g) increase the maximum rate for taking water; and
 - (h) change the conditions under which the water may be taken.
- (2) This chapter applies even if the application was made before the commencement of this plan.
- (3) This chapter does not apply to—
 - (a) an application made under the following provisions of the *Water Act 2000*—
 - (i) section 221—reinstating an expired water licence;
 - (ii) section 224—amalgamating water licences;
 - (iii) section 225—subdividing a water licence; and
 - (iv) section 229—effect of disposal of part of land to which water licence to take water attaches.
 - (b) an application made in accordance with chapter 2 of this plan.

178 Applications to be refused

The chief executive must refuse an application to which this chapter applies unless this chapter explicitly provides for granting the application.

179 Applications to interfere with the flow of water

- (1) This section applies to the chief executive making a decision about an application to interfere with, or increase the interference with, water in a watercourse, lake or spring.
- (2) The chief executive may accept and decide the application only if the purpose of the proposed interference or increase in interference is—
 - (a) to store water to be taken under an authorisation for stock or domestic purposes;

- (b) to provide a pumping pool to enable water to be taken under an existing authorisation;
 - (c) to artificially improve or change the course of a watercourse, lake or spring; or
 - (d) to store water for a purpose not related to the taking of water under a water entitlement.
- (3) For subsection (2)(d), examples of the purpose include community landscaping or retaining water for flood mitigation purposes.
- (4) The chief executive may approve the application if—
- (a) the chief executive is satisfied the proposed interference or increase in interference is necessary for a purpose mentioned in subsection (2); and
 - (b) the proposed storage capacity is no greater than is necessary for the purpose of the proposed interference or increase in interference having regard to—
 - (i) the impact the proposed interference or increase in interference may have on the following—
 - (A) instream water levels;
 - (B) the natural movement of sediment;
 - (C) the bed and banks of the watercourse or lake;
 - (D) riparian vegetation;
 - (E) habitats for native plants and animals;
 - (F) the movement of fish and other aquatic species;
 - (G) the cultural and ecological values of watercourses, waterholes, lakes or springs; and
 - (ii) for a purpose mentioned in subsection (2)(a)—existing water supplies on the property to which the application relates, including existing weirs, groundwater and dams taking overland flow water and the availability of water at the proposed site.
- (5) However, the chief executive must not approve an application for a purpose mentioned in subsection (2)(a), (b) or (d) if the proposed storage capacity is greater than—
- (a) for an application for a purpose mentioned in subsection (2)(a)—20ML;
 - (b) for an application for a purpose mentioned in subsection (2)(b)—2 ML;
 - (c) for an application for a purpose mentioned in subsection (2)(d)—20 ML.
- (6) In this section pumping pool means a pool of water near a pump in a watercourse, lake or spring that ensures the water level of the watercourse, lake or spring is appropriate to enable the pump to function properly.

180 Application to increase the maximum rate at which water may be taken

- (1) This section applies to an application to amend an existing water licence to increase the maximum rate at which water may be taken.
- (2) The chief executive may grant the application if—
- (a) the water licence states a nominal entitlement; and
 - (b) there is an existing development permit associated with the water licence; and
 - (c) the maximum rate specified on the existing water licence is less than—

- (i) if there is an existing development permit associated with the water licence that states a pump size mentioned in schedule 7, column 1 of the Water Resource (Whitsunday) Plan 2010—the rate stated in schedule 7, column 2 of the Water Resource (Whitsunday) Plan 2010; or
 - (ii) if there is an existing development permit associated with the water licence that states a pump size other than a pump size mentioned in schedule 7, column 1 of the Water Resource (Whitsunday) Plan 2010—the rate decided by the chief executive having regard to the rates stated for similar pump sizes in schedule 7, column 2 of the Water Resource (Whitsunday) Plan 2010.
- (d) where schedule 7 of the Water Resource (Whitsunday) Plan 2010 does not apply—the works authorised by an existing development permit associated with the water licence have the capacity to take water at a rate greater than the maximum rate specified on the existing water licence.
- (3) The chief executive must refuse the application if the maximum rate sought under the application exceeds—
- (a) if there is an existing development permit associated with the water licence that states a pump size mentioned in schedule 7, column 1 of the Water Resource (Whitsunday) Plan 2010—the rate stated in schedule 7, column 2 of the Water Resource (Whitsunday) Plan 2010;
 - (b) if there is an existing development permit associated with the water licence that states a pump size other than a pump size mentioned in schedule 7, column 1 of the Water Resource (Whitsunday) Plan 2010—the rate decided by the chief executive having regard to the rates stated for similar pump sizes in schedule 7, column 2 of the Water Resource (Whitsunday) Plan 2010; or
 - (c) the rate at which the works authorised by an existing development permit associated with water licence are capable of taking water.

181 Application to increase the daily volumetric limit

- (1) This section applies to an application to amend a water licence to increase the daily volumetric limit.
- (2) The chief executive may grant the application if—
- (a) the water licence states a nominal entitlement; and
 - (b) there is an existing development permit associated with the water licence; and
 - (c) the daily volumetric limit specified on the existing water licence is less than—
 - (i) if there is an existing development permit associated with the water licence that states a pump size mentioned in schedule 7, column 1 of the Water Resource (Whitsunday) Plan 2010—the daily volumetric limit stated in schedule 7, column 3 of the Water Resource (Whitsunday) Plan 2010; or
 - (ii) if there is an existing development permit associated with the water licence that states a pump size other than a pump size mentioned in schedule 7, column 1 of the Water Resource (Whitsunday) Plan 2010—the daily volumetric limit decided by the chief executive having regard to the limits stated for similar pump sizes in schedule 7, column 3 of the Water Resource (Whitsunday) Plan 2010.
 - (d) where schedule 7 of the Water Resource (Whitsunday) Plan 2010 does not apply—the works authorised by an existing development permit associated with the water licence

have the capacity to take water at a rate greater than the daily volumetric limit specified on the existing water licence.

- (3) The chief executive must refuse the application if the daily volumetric limit applied for exceeds—
- (a) if there is an existing development permit associated with the water licence that states a pump size mentioned in schedule 7, column 1 of the Water Resource (Whitsunday) Plan 2010—the daily volumetric limit stated in schedule 7, column 3 of the Water Resource (Whitsunday) Plan 2010;
 - (b) if there is an existing development permit associated with the water licence that states a pump size other than a pump size mentioned in schedule 7, column 1 of the Water Resource (Whitsunday) Plan 2010—the daily volumetric limit decided by the chief executive having regard to the limits stated for similar pump sizes in schedule 7, column 3 of the Water Resource (Whitsunday) Plan 2010; or
 - (c) the maximum volume the works authorised by an existing development permit associated with the water licence are capable of taking in a day at the maximum rate decided.

182 Applications to take water for stock or domestic purposes

- (1) This section applies to an application to take water from a watercourse, lake or spring, where—
- (a) the application is for the taking of water for stock purposes or domestic purposes; and
 - (b) the location from which water is proposed to be taken is not within any of the zones in attachment 2(b).
- (2) The chief executive may grant the application only if the chief executive is satisfied that—
- (a) the applicant does not hold another water entitlement to take water for the land to which the application applies;
 - (b) the land to which the application relates does not have access to a suitable alternative water supply, including, but not limited to, a reticulated water supply;
 - (c) there is no unallocated water from which the applicant may obtain a water entitlement; and
 - (d) the plan of survey for the land to which the application applies was registered before the commencement of this plan.
- (3) The chief executive may grant the licence only for stock purposes and domestic purposes.
- (4) Subsection (2) does not limit the matters the chief executive may consider.
- (5) In this section—
- (a) ‘plan of survey’ is defined in schedule 2 of the Land Title Act 1994.

183 to 193 section numbers not used

Chapter 8 Granting Water Licences for Taking Overland Flow Water

194 Scope of chapter 8

For granting a licence under section 212 of the *Water Act 2000*, this chapter states—

- (a) for section 69 of the Water Resource (Whitsunday) Plan 2010—the process for granting or amending a water licence to replace the authority under section 68(3) of the Water Resource (Whitsunday) Plan 2010;
- (b) matters the chief executive must consider;
- (c) conditions the chief executive must include on the licence; and
- (d) requirements for certified reports for an overland flow storage.

195 Granting a water licence in accordance with section 69 of the Water Resource (Whitsunday) Plan 2010

- (1) The chief executive may at any time grant a licence for taking overland flow water to replace the authority under section 68 of the Water Resource (Whitsunday) Plan 2010
- (2) Before granting a water licence under subsection (1), the chief executive must issue a notice to the owner of the land—
 - (a) requesting that the owner of the land clearly identify the relevant existing works that take overland flow water;
 - (b) stating that the chief executive intends to grant a water licence for taking overland flow water using the works;
 - (c) requesting additional information including, but not limited to, the pattern of water use from the works based on the water requirements and purpose for which the water is used; and
 - (d) requesting any other information required by the chief executive.
- (3) A notice under subsection (2) may also require the owner of the land to provide, in accordance with section 196, a certified report about the take of overland flow water taken using the works.
- (4) In making a decision about granting a licence under subsection 1, the chief executive must consider—
 - (a) any relevant information available to the chief executive about the works;
 - (b) the certified report about the works; and
 - (c) any other matters the chief executive considers relevant.

196 Certified reports for overland flow works

- (1) For the purpose of this chapter, a certified report is a report prepared in accordance with the standards and requirements set out in a notice provided by the chief executive.
- (2) The purpose of the certified report is to provide the chief executive with an accurate representation of—
 - (a) the infrastructure to which the report relates;
 - (b) the operation of the infrastructure; and

- (c) the ability of the infrastructure to take overland flow water.
- (3) The chief executive may require that the certified report be verified and signed by a registered professional engineer.

197 Content and conditions for a water licence to take overland flow water

A water licence for the taking of overland flow water—

- (a) must state the purpose for which water may be taken under the licence as either—
 - (i) rural; or
 - (ii) any.
- (b) must state at least one of the following—
 - (i) the maximum stored volume;
 - (ii) the maximum rate at which the water may be taken under the licence;
 - (iii) the daily volumetric limit for the licence;
 - (iv) the nominal entitlement;
 - (v) the annual volumetric limit for the licence; or
 - (vi) the mean annual volume for the licence.
- (c) may state conditions for the licence, including flow conditions and conditions for storing water taken under the licence.

198 to 208 section numbers not used

Chapter 9 Monitoring and reporting

209 Water monitoring

- (1) The chief executive must measure or collect and keep publicly available, records of—
 - (a) water quantity;
 - (b) water taken; and
 - (c) groundwater levels.
- (2) The chief executive must collect and keep publicly available, information on—
 - (a) future consumptive demands for water; and
 - (b) water use efficiency.
- (3) The chief executive may use information collected to support water resource assessment and reporting.

210 Natural ecosystems monitoring

- (1) The chief executive must collect and record information on—
 - (a) ecological assets that are linked to the ecological outcomes of the Water Resource (Whitsunday) Plan 2010; and
 - (b) the critical water requirements of ecological assets, including the provision of these requirements under the Water Resource (Whitsunday) Plan 2010.

211 Assessment

- (1) The chief executive must assess the data measured, collected and recorded under sections 209 and 210 of this plan against the outcomes specified in the Water Resource (Whitsunday) Plan 2010.
- (2) The chief executive's assessment may be used in assisting the minister to prepare a report under section 82 of the Water Resource (Whitsunday) Plan 2010.

212 to 222 section numbers not used

Chapter 10 Scheme licence holder monitoring and reporting

223 Scope of chapter 10

This chapter sets out the monitoring and reporting requirements that apply to—

- (a) the scheme licence holder; and
- (b) all water allocations associated with the Proserpine River Water Supply Scheme.

224 Scheme licence holder responsibilities

- (1) Attachment 5 sets out the responsibilities of the scheme licence holder.
- (2) Where attachment 5 indicates that the resource operations licence holder and the distribution operation licence holders have responsibility for a function—
 - (a) the distribution operations licence holders are responsible for monitoring and reporting associated with—
 - (i) water allocations associated with their respective distribution operations licences; and
 - (ii) the infrastructure listed in attachment 4.
 - (b) the resource operations licence holder is responsible for the remaining monitoring requirements for the water supply scheme.

Part 1 Scheme licence holder monitoring

Division 1 Water quantity

225 Stream flow and storage water level data

The resource operations licence holder must record storage water level and flow data in accordance with Table 10.

Table 10. Locations where continuous time series storage water level data or height and flow data are required

Location	Continuous time series storage water level data	Continuous time series height and flow data
Peter Faust Dam Headwater	✓	
Peter Faust Dam Tailwater		✓

226 Releases from storages

- (1) This section applies to releases from Peter Faust Dam.
- (2) The resource operations licence holder must measure and record—
 - (a) the daily volume released;
 - (b) the release rate, and for each change in release rate—

- (i) the date and time of the change; and
 - (ii) the new release rate.
- (3) The resource operation licence holder must record—
- (a) the reason for each release; and
 - (b) the inlet level used and reason for deciding to release from that particular inlet level.

227 Announced allocations

The resource operations licence holder must record details of announced allocation determinations including—

- (a) the announced allocations for priority groups A , A1, A2 and A3 water allocations;
- (b) the date announced allocations are determined; and
- (c) the value of each parameter applied when calculating the announced allocation.

228 Water taken by water users

The scheme licence holder must record the total volume of water, including distribution loss water, taken by each water user for each zone as follows—

- (a) the total volume of water taken each quarter;
- (b) the total volume of water entitled to be taken at any time; and
- (c) the basis for determining the total volume of water entitled to be taken at any time.

229 Seasonal water assignment of water allocation

The scheme licence holder that gives consent to a seasonal water assignment under section 114 must record details of seasonal water assignment arrangements including—

- (a) the name of the assignee, volume and location of water that has been seasonally assigned by an assignor;
- (b) the name of the assignor, volume and location of water that has been seasonally assigned to an assignee; and
- (c) the effective date of the seasonal water assignment.

230 Critical water supply arrangements

The resource operations licence holder must record details of the commencement and cessation of critical water supply arrangements, including—

- (a) the date the critical water supply arrangements commenced for each priority group;
- (b) the date the critical water supply arrangements ceased for each priority group;
- (c) the volumes of water to be supplied to each priority group;
- (d) the minimum allocation for priority group A users; and
- (e) the critical levels for priority group A reserves.

231 Carryover

The resource operations licence holder must record details of—

- (a) the volume of water carried over by a water allocation holder into the next water year; and
- (b) the total volume of water carried over from the previous water year into the next water year.

Division 2 Impact of storage operation and distribution of water on aquatic ecosystems

232 Water quality

The resource operations licence holder must monitor water quality in relation to relevant infrastructure, as listed in attachment 4, part 1, in accordance with section 12⁹.

233 Bank condition

- (1) The resource operations licence holder must inspect banks for evidence of collapse and/or erosion within the ponded areas associated with the holder's infrastructure, as listed in attachment 4, part 1, downstream of that infrastructure following instances of rapid water level changes or large flows through the infrastructure or other occasions when collapse and/or erosion of banks may be likely.
- (2) For subsection (1), the distance downstream is the distance of influence of infrastructure operations.
- (3) Any instances of bank slumping or erosion observed must be investigated to determine if the instability was associated with the nature or operation of the infrastructure.

234 Fish stranding

The scheme licence holder must record and assess reported instances of fish stranding in watercourses and ponded areas associated with the operation of the holder's infrastructure listed in attachment 4 to determine if any instance is associated with the operation of that infrastructure.

Division 3 Data transfer

235 Monitoring data must be made available

The scheme licence holder must transfer any monitoring data required under this chapter to the chief executive upon request, and within the time requested.

236 Transfer of data by distribution operations licence holders

- (1) The distribution operations licence holder must, when requested by the resource operations licence holder, transfer all data measured, collected and recorded to the resource operations licence holder for the Proserpine River Water Supply Scheme—
 - (a) that is reasonably required for the resource operations licence holder to comply with the rules and requirements of this plan; and
 - (b) within 15 business days of a request being made, or another timeframe if agreed to by the distribution operations licence holders and resource operations licence holder.
- (2) For subsection (1), data measured, collected and recorded includes data about—
 - (a) water taken by water users;
 - (b) water diversions;
 - (c) seasonal water assignment of water allocations; and
 - (d) fish stranding.

⁹ The Water Monitoring Data Collection Standards can be inspected at any of the department's offices or accessed online at: <www.derm.qld.gov.au>

Scheme licence holder reporting

237 Reporting requirements

- (1) The resource operation licence holder must submit a quarterly report and an annual report in accordance with this part.
- (2) The scheme licence holder must submit an operational report and an emergency report in accordance with this part.

Division 1 Quarterly reporting

238 Quarterly report—resource operations licence holder

- (1) The resource operations licence holder must submit a quarterly report to the chief executive after the end of each quarter of every water year.
- (2) The report should contain the following data—
 - (a) stream flow and storage water level—all records referred to in section 225 of this plan;
 - (b) releases from the storage—daily volumes released referred to in section 226 of this plan;
 - (c) for each quarter, the total volume of water taken for each zone and entitled to be taken for each zone;
 - (d) water quality—in accordance with section 232 of this plan; and
 - (e) a summary of bank condition monitoring, and instances of slumping carried out in accordance with sections 233 of this plan.

Division 2 Annual reporting

239 Annual report—resource operations licence holder

- (1) The resource operations licence holder must submit an annual report to the chief executive after the end of each water year.
- (2) The annual report must include—
 - (a) water quantity monitoring results required under section 240 of this plan;
 - (b) details of the impact of storage operation on aquatic ecosystems as required under section 241 of this plan; and
 - (c) a discussion of any issues that arose as a result of the implementation and application of the rules and requirements under sections 92(2) and 93(2).

240 Annual report—water quantity monitoring

The resource operations licence holder must include in their annual report under section 239—

- (a) a summary of announced allocation determinations, including—
 - (i) an evaluation of the announced allocation procedures and outcomes; and
 - (ii) the date and value for the initial announced allocation and for each change made to an announced allocation.
- (b) for the water year, the total annual volume of supplemented water taken by each water user, specified by zone, namely—
 - (i) the total volume of water taken for each zone;
 - (ii) the total volume entitled to be taken for each zone; and

- (iii) the basis for determining the total volume of water entitled to be taken in each zone.
- (c) for the water year, the total annual volume of supplemented water taken by all water users, specified by zone, namely—
 - (i) the total volume of water taken;
 - (ii) the total volume of water entitled to be taken; and
 - (iii) the basis for determining the volume of water entitled to be taken.
- (d) seasonal water assignments, namely—
 - (i) the total number of seasonal water assignment arrangements; and
 - (ii) the total volume of water seasonally assigned.
- (e) the volume of water carried over for the Proserpine River Water Supply Scheme including—
 - (i) the total volume of water carried over to the water year from the previous water year; and
 - (ii) the total volume of water carried over from the water year to the next water year.
- (f) instances where critical water supply arrangements have been implemented, including—
 - (i) an evaluation of the effectiveness of the rules and outcomes; and
 - (ii) the commencement date(s) and time period(s) for which the rules were in effect.
- (g) all details of changes to the storage and delivery infrastructure, or the operation of storage and delivery infrastructure that may impact on compliance with rules in this plan; and
- (h) details of any new monitoring devices used such as equipment to measure stream flow.

241 Annual report—impact of storage operation and distribution of water on aquatic ecosystems

- (1) The resource operations licence holder must include in their annual report—
 - (a) a summary of environmental considerations made by the resource operations licence holder in making operational and release decisions under section 92 and 93; and
 - (b) a summary of the environmental outcomes of the decision including any adverse environmental impacts.
- (2) The annual report must include a summary of bank condition and fish stranding monitoring and assessment including—
 - (a) results of investigations of bank slumping or erosion identified in ponded areas and/or downstream of the storage;
 - (b) results of any investigations of fish stranding downstream of the storage; and
 - (c) changes to the operation of the storage to reduce instances of bank slumping, erosion or fish stranding.
- (3) The annual report must include a discussion and assessment of the following water quality issues as per sections 92 and 93 of this plan—
 - (a) thermal and chemical stratification in the storage;

- (b) contribution of the storage and its management to the quality of water released;
- (c) cumulative effect of the storage on water quality;
- (d) cyano-bacterial population changes in response to stratification in the storage; and
- (e) any proposed changes to the monitoring program as a result of evaluation of the data.

Division 3 Operational reporting

242 Operational report—scheme licence holder

The scheme licence holder must—

- (a) notify the chief executive within one business day of becoming aware of any of the following operational incidents—
 - (i) non-compliance by the scheme licence holder with the rules given in this plan that may affect the outcomes of the plan; and
 - (ii) instances of fish stranding or bank slumping within supplemented watercourses of the Proserpine River Water Supply Scheme;
- (b) provide to the chief executive within five business days of notification of the occurrence of any of the operational incidents, a report which includes details of—
 - (i) the incident;
 - (ii) conditions under which the incident occurred; and
 - (iii) any responses or activities carried out as a result of the incident.

243 Operational report—resource operations licence holder

The resource operations licence holder must—

- (a) notify the chief executive and distributions operations licence holders upon activating critical water supply arrangements;
- (b) notify the chief executive upon making a decision relating to—
 - (i) an initial announced allocation and/or its recalculation; and
 - (ii) details of any arrangements for addressing circumstances where the resource operation licence holder is unable to supply water allocations;
- (c) transfer to the chief executive within five business days, relevant supporting information used in making a decision under subsection (b).

Division 4 Emergency reporting

244 Emergency report—scheme licence holder

Where a scheme licence holder cannot comply with the rules and requirements of this plan as a result of an emergency, the scheme licence holder must—

- (a) notify other scheme licence holders upon discovery of an emergency;
- (b) notify the chief executive upon discovery of the emergency; and
- (c) provide a report to the chief executive including—
 - (i) details of the emergency;
 - (ii) conditions under which the emergency occurred;

- (iii) any responses or activities carried out as a result of the emergency; and
- (iv) any rules and requirements specified in this plan that the scheme licence holder is unable to comply with due to the emergency.

245 to 256 section numbers not used

Chapter 11 Amendments to the Resource Operations Plan

257 Scope of chapter 11

This chapter states the types of amendments that can be made to this plan under the *Water Act 2000* that—

- (a) do not require public notification—part 1; and
- (b) do require public notification—part 2; and
- (c) to provide for a deferred aspect—part 3.

258 Commencement of amendments under parts 1 and 2

An amendment to this plan commences—

- (a) where a date is specified in the Queensland Government Gazette—on the date specified; or
- (b) where no date is specified in the Queensland Government Gazette—on the date the gazette is first published.

Part 1 Amendments not requiring public notification

259 Scope of part 1

This part describes those amendments that may be made to this plan under section 106(b) of the *Water Act 2000*.

260 Amendment to implement an amendment to the Water Resource (Whitsunday) Plan 2010

An amendment that is necessary to implement an amendment to the Water Resource (Whitsunday) Plan 2010 made under section 57(b) of the *Water Act 2000* may be made to this plan.

261 Amendment to monitoring requirements

- (1) An amendment that provides for improved or more efficient monitoring for assessing the Water Resource (Whitsunday) Plan 2010 outcomes may be made to this plan.
- (2) The amendments under subsection 1 may include, but are not limited to, the following—
 - (a) changing indicators for water quality monitoring;
 - (b) an increase in, or addition to, monitoring requirements, if further information is required; and
 - (c) a reduction or removal of a scheme licence holder's monitoring requirements, if the chief executive is satisfied that no further information or benefit is gained from the continuation of the monitoring requirements.

262 Amendment to infrastructure details

An amendment may be made to the infrastructure details in attachment 4 of this plan provided the amendment does not have an adverse impact on the achievement of the Water Resource (Whitsunday) Plan 2010 outcomes and is an amendment to—

- (a) correct a minor error in the attachment 4 (for example, revision of storage volume, spillway and/or outlet discharge relationships);

- (b) facilitate the installation of a fish transfer system on any of the infrastructure detailed in attachment 4; or
- (c) facilitate the modification to multi-level off-take works on any of the infrastructure detailed in attachment 4, part 1.

263 Amendment to chapter 4

- (1) An amendment may be made to chapter 4, Table 2 to change the watercourse or parts of the watercourse used for the distribution of water.
- (2) A change to operating and environmental management rules, water sharing rules and seasonal assignment rules that are necessary to implement or amend critical water supply arrangements under sections 100 and 102, of this plan.

264 Amendment to attachment 5

An amendment may be made to the scheme licence holder responsibilities in attachment 5.

Part 2 Amendments requiring public notification

265 Scope of part 2

This part states the amendments that may be made to this plan under section 105(6) of the *Water Act 2000*.

266 Amendments under the *Water Act 2000*

- (1) The chief executive may amend this plan under section 105(6) of the *Water Act 2000* to include additional requirements for water management.
- (2) Amendments made to this plan under section 105(6) of the *Water Act 2000* include, but are not limited to—
 - (a) an addition or amendment to resource operations plan zones, including the amalgamation or subdivision of existing zones;
 - (b) providing for the operation and management of new water infrastructure, where the chief executive is satisfied that the proposed infrastructure details, operating and environmental management rules, dealings with water allocations, water sharing rules or seasonal water assignment rules meet the objectives and outcomes of the Water Resource (Whitsunday) Plan 2010;
 - (c) an addition or amendment to infrastructure details, operating and environmental management rules, dealings with water allocations, water sharing rules or seasonal water assignment rules for existing infrastructure, where the chief executive is satisfied that the proposed amendment meet the objectives and outcomes of the Water Resource (Whitsunday) Plan 2010;

Part 3 Amendment to provide for deferred aspect

267 Scope of part 3

This part states the amendments that may be made to this plan under section 105A of the *Water Act 2000*.

268 Amendments to provide for a deferred aspect

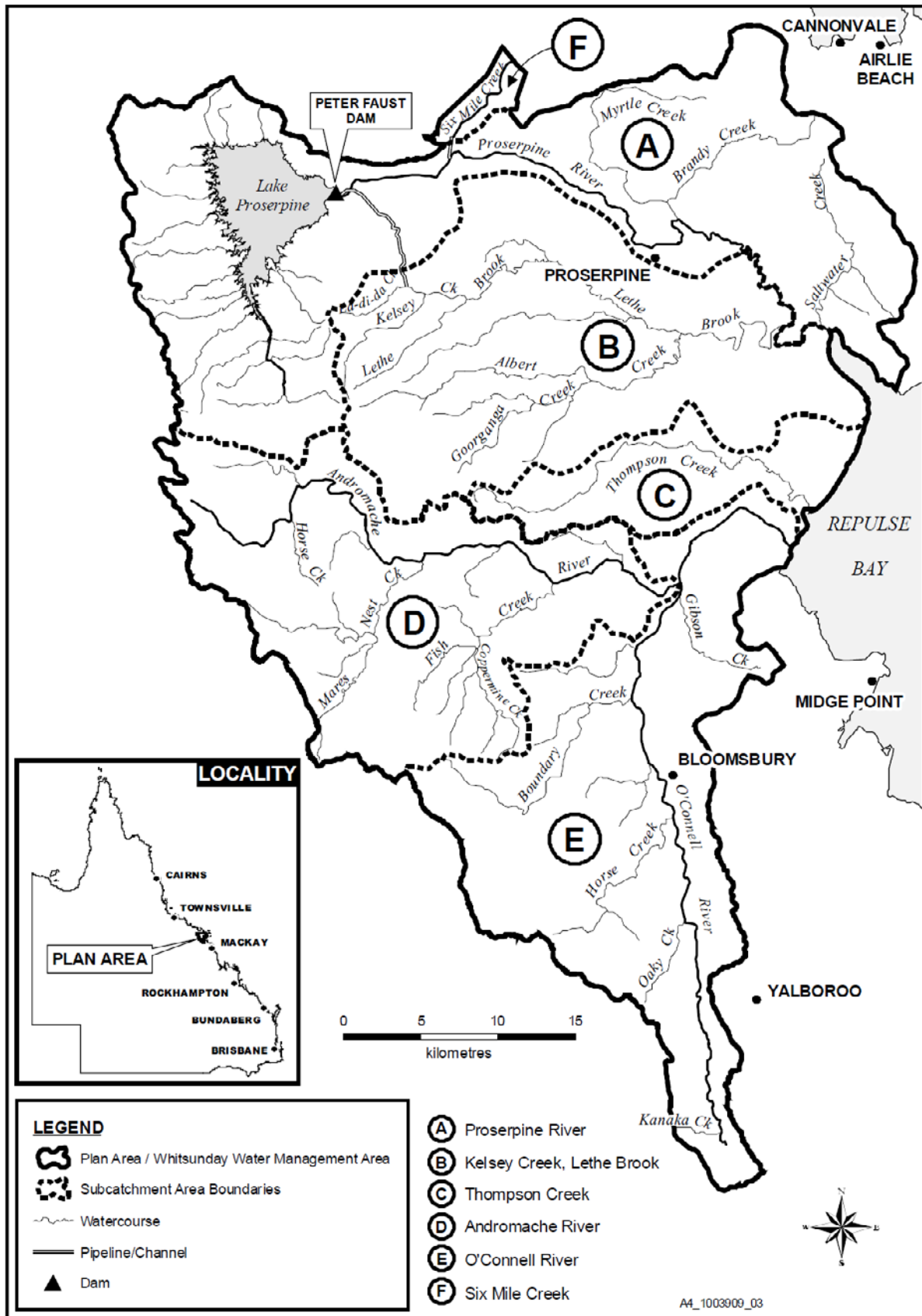
The chief executive may amend this plan under section 105A of the *Water Act 2000* to include provisions about a deferred aspect if the plan has not previously been amended to include provisions about that aspect.

Attachment 1 Dictionary

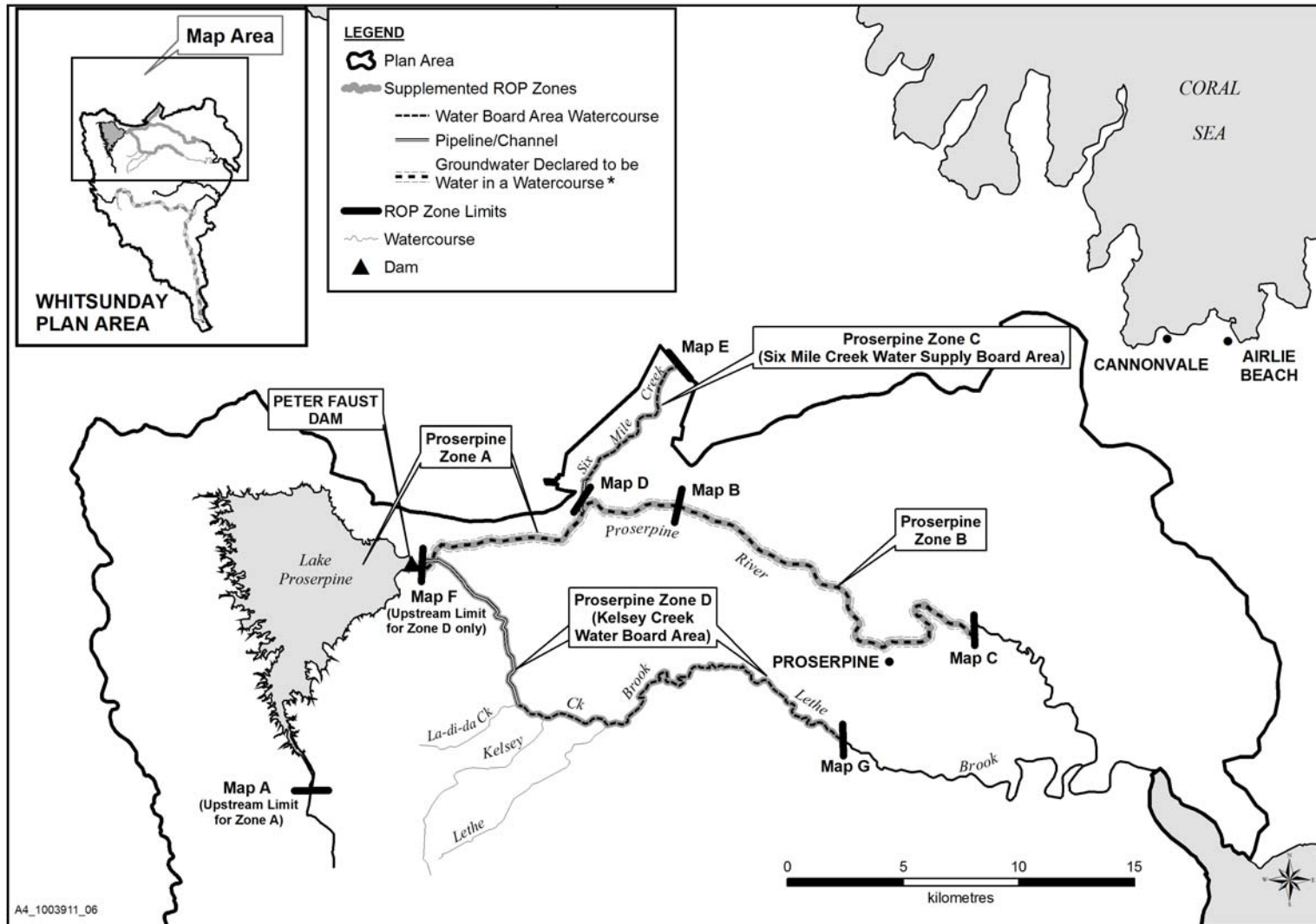
Term	Definition
AHD	Australian Height Datum (AHD) adopted by the National Mapping Council of Australia for referencing a level or height back to a standard base level.
AMTD	Adopted Middle Thread Distance (AMTD) is the distance in kilometres (km) that a specific point in the watercourse is from the watercourse's mouth or junction with the main watercourse and is measured along the middle of a watercourse.
Announced allocation	For a water allocation managed under a resource operations licence, announced allocation means a number, expressed as a percentage, which is used to determine the maximum volume of water that may be taken in a water year under the authority of a water allocation.
Annual volumetric limit	For an unsupplemented water allocation, annual volumetric limit has the same meaning as nominal entitlement.
Assignee	The person or entity to whom an interest or right to water is being transferred (e.g. seasonally assigned).
Assignor	The person or entity that transfers an interest or right to water to an assignee (e.g. a seasonal assignment).
Carryover	The volume of water permitted to be carried over from the unused portion of the water entitlement at the end of the previous water year. The volume available to the entitlement holder is adjusted to account for storage losses.
Coordinator-General	As defined under the State Development and Public Works Organisation Act 1971.
Critical water supply arrangements	During periods of critical water shortage the critical water supply arrangements set out the operating rules by which water will be shared.
Discharge	The rate at which a volume of water passes a point in a stream or pipeline per unit of time. This could be measured in litres per second (L/s), cubic metres per second (m ³ /s or cumecs) or in megalitres per day (ML/day).
Distribution loss	Water that is 'lost' when delivering water for water allocations in reticulated areas via constructed infrastructure, or a watercourse, through processes such as (but not limited to) evaporation, seepage, pipeline leakage, accidental loss through temporary pipe failure (breaks), loss through pressure relief systems, scouring and pigging.
Elevation (EL)	The elevation of a geographic location is its height above a fixed reference point, often the mean sea level.
Emergency	An occurrence that, by nature of its severity, extent or timing might be regarded as an emergency (for example contamination of water supply, structural damage to infrastructure or a danger to human health).
Existing pump	An existing pump is the pump authorised under a development permit at the time the water resource plan was finalised.
Existing development permit	For Chapter 7 of this plan, an existing development permit means a development permit that is in effect at the commencement of this plan.
Existing water authorisations	A water licence, interim water allocation or other authority to take water that has effect at the commencement of this plan.
Fish stranding	When fish are stranded or left out of the water on the bed or banks of a watercourse, on infrastructure such as spillways and causeways or left isolated in small and/or shallow pools, from which they cannot return to deeper water. This also applies to other aquatic species such as platypus, turtles and any rare or threatened species.

Term	Definition
Full Supply Volume	The specified maximum volume of water within the ponded area of a dam, weir or barrage, which corresponds to the full supply level.
Groundwater	Underground water that is subartesian water.
Inlet	Infrastructure comprised of an entrance channel, intake structure, and gate or valve, which allow for water to be taken from the storage and discharged into the watercourse downstream of the storage.
Location	<p>a) For a water allocation, location means the zone from which water under the water allocation can be taken.</p> <p>b) For a water licence, location means the section of the watercourse, lake or spring abutting or contained by the land described on the water licence at which water may be taken.</p>
Megalitre (ML)	One million litres.
Minimum operating level	The operating level below which water cannot be used to supply customers, either because there is insufficient hydraulic gradient or because of poor water quality for environmental reasons. Water below the minimum operating level can sometimes be accessed as part of drought response action using temporary supply measures, such as installing a floating inlet pump on a gravity outlet supply.
Multi-level off-take	An off-take arrangement that allows stored water to be released downstream from selected levels below the stored water surface. In this plan it refers to the Peter Faust Dam.
Nominal Entitlement	See section 65 of the Water Regulation 2002.
Nominal location	The location of a supplemented water allocation set at the commencement of the resource operations plan.
Passing flow	The flow in a watercourse defined as either litres per second (L/s), cubic metres per second (m ³ /s or cumecs), or megalitres per day (ML/day), past a specified location.
Ponded area	Area of inundation at full supply level of a storage.
Project of regional significance	A project that the chief executive decides is a project of regional significance for the purposes of this plan. See schedule 8 of the Water Resource (Whitsunday) Plan 2010.
Project of state significance	A project declared under the State Development and Public Works Organisation Act 1971 to be a significant project.
Quarter or quarterly	Three monthly intervals commencing at the start of the water year.
Resource operations plan zone	A geographic location defined by a reach of a watercourse. Resource operations plan zones define the location of a water allocation and operational arrangements under this plan.
Scheme licence holder	For this plan, the term 'scheme licence holder means'— <p>a) the resource operations licence holder for the Proserpine River Water Supply Scheme;</p> <p>b) the distribution operations licence holder within the Proserpine River Water Supply Scheme for Six Mile Creek Water Supply Board; and</p> <p>c) the distribution operations licence holder within the Proserpine River Water Supply Scheme for Kelsey Creek Water Board.</p>
State purposes	A project of State significance or project of regional significance
Unused water	The volume of water available to a water user under an announced allocation at the end of the water year minus the volume of water used by the water holder in the water year.
Valid change certificate	A certificate issued under section 129 of the <i>Water Act 2000</i> .
Water user	The holder of a valid water entitlement.
Water use	The actual consumption of water.
Water Year	The 12 month period beginning 1 July and ending 30 June.

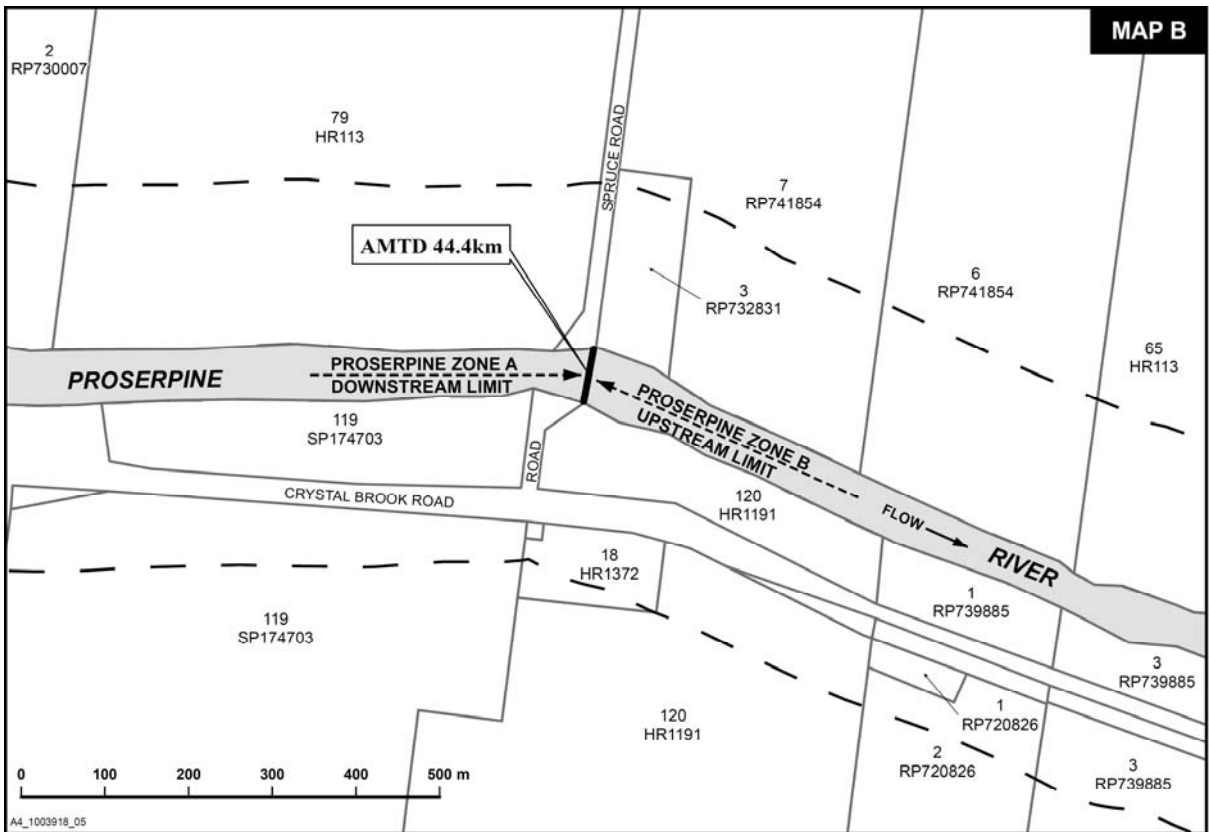
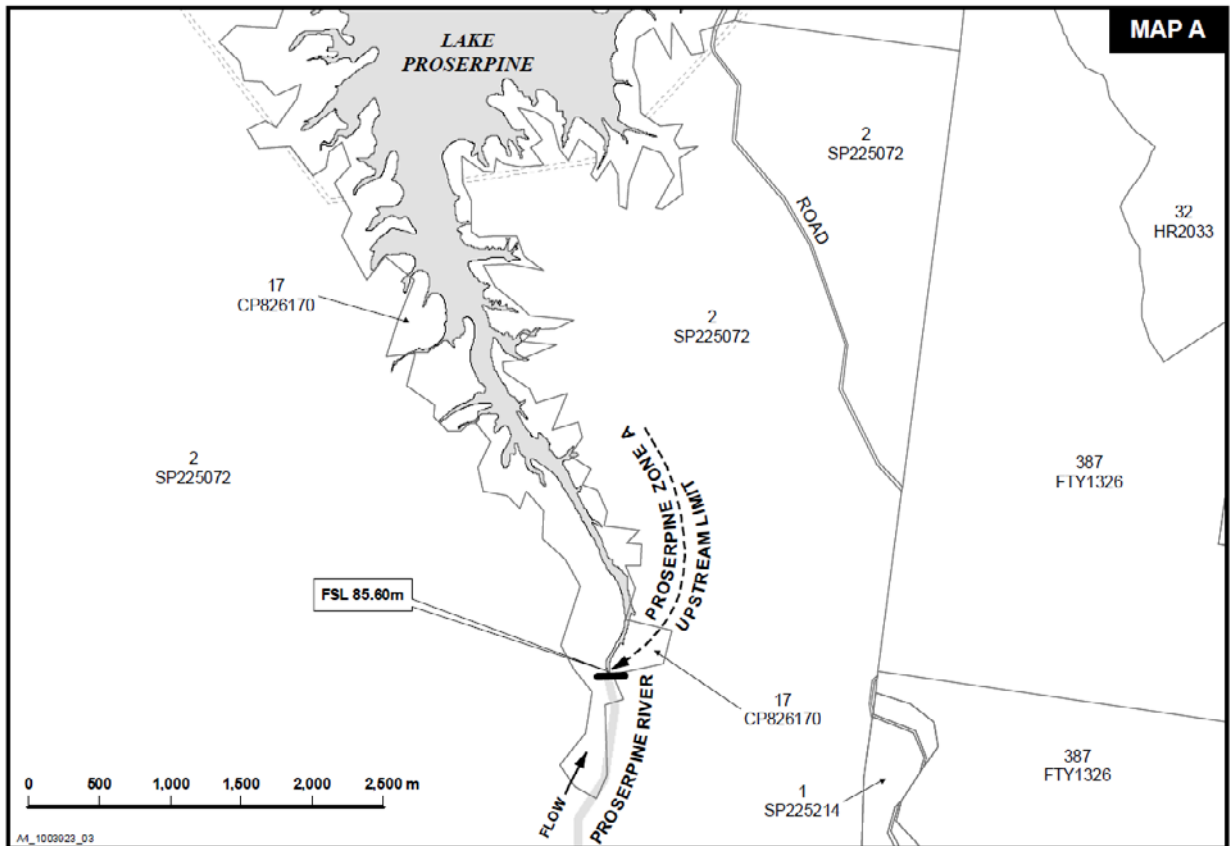
Attachment 2 (a) Whitsunday Plan Area (showing subcatchments) and Whitsunday Water Management Area

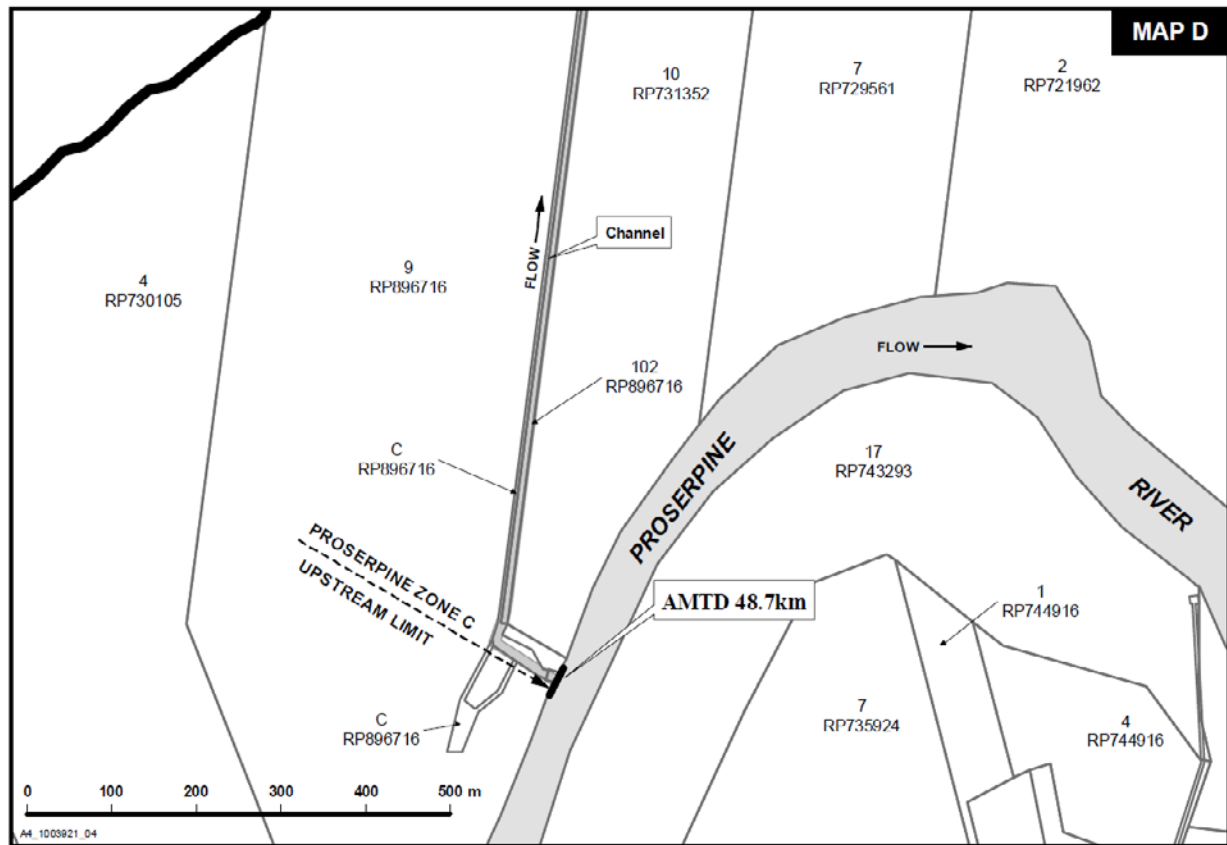
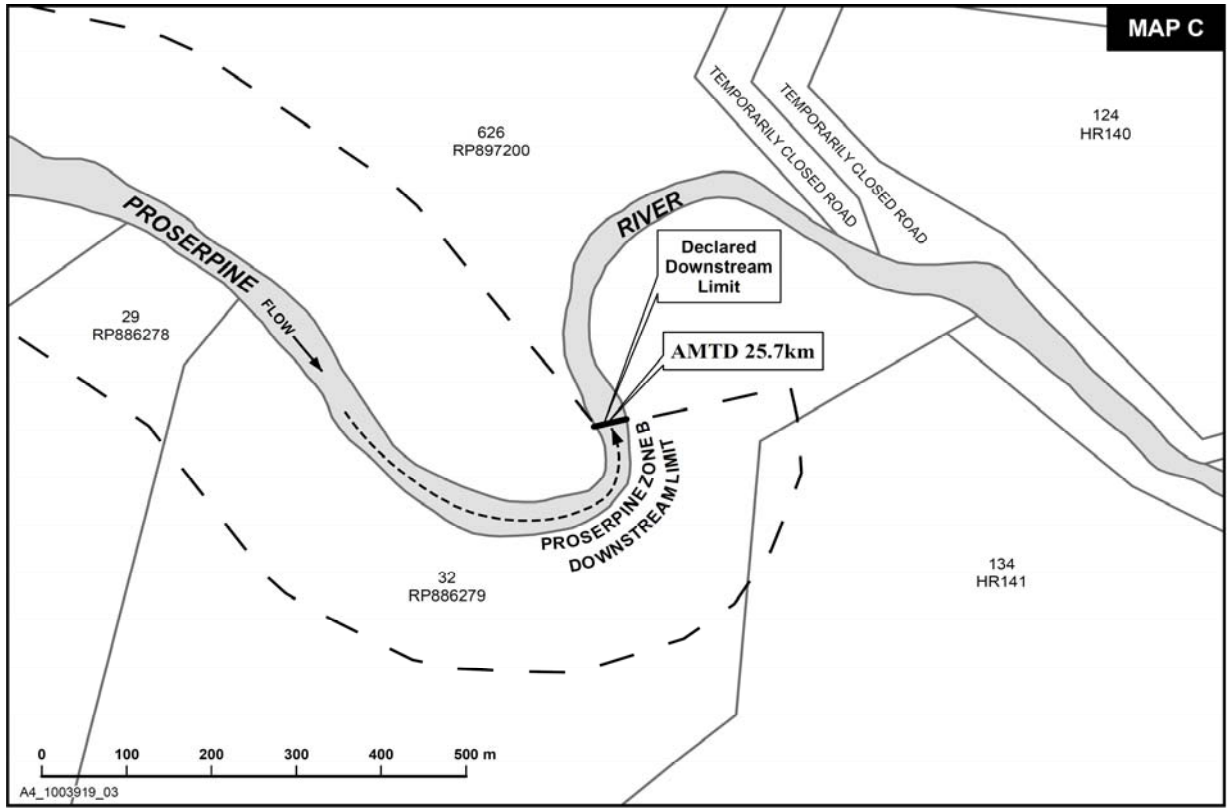


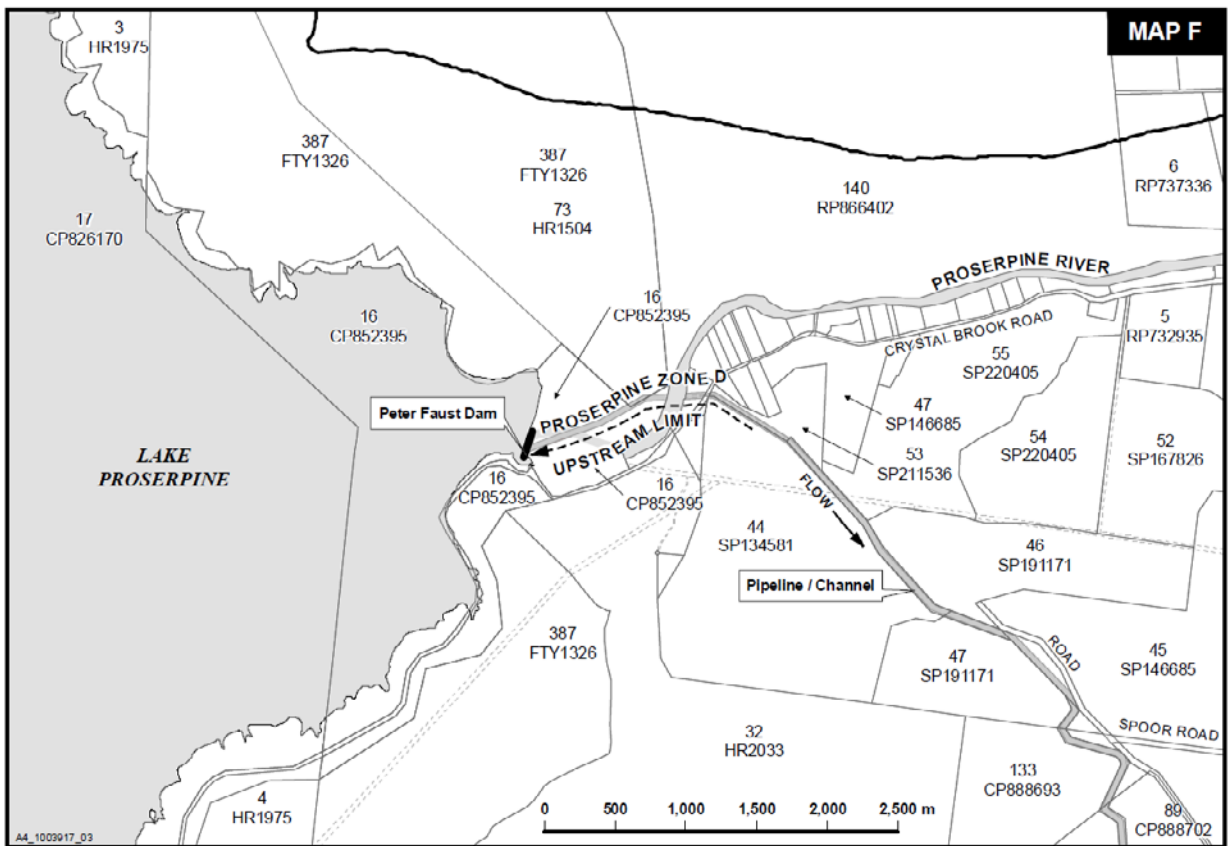
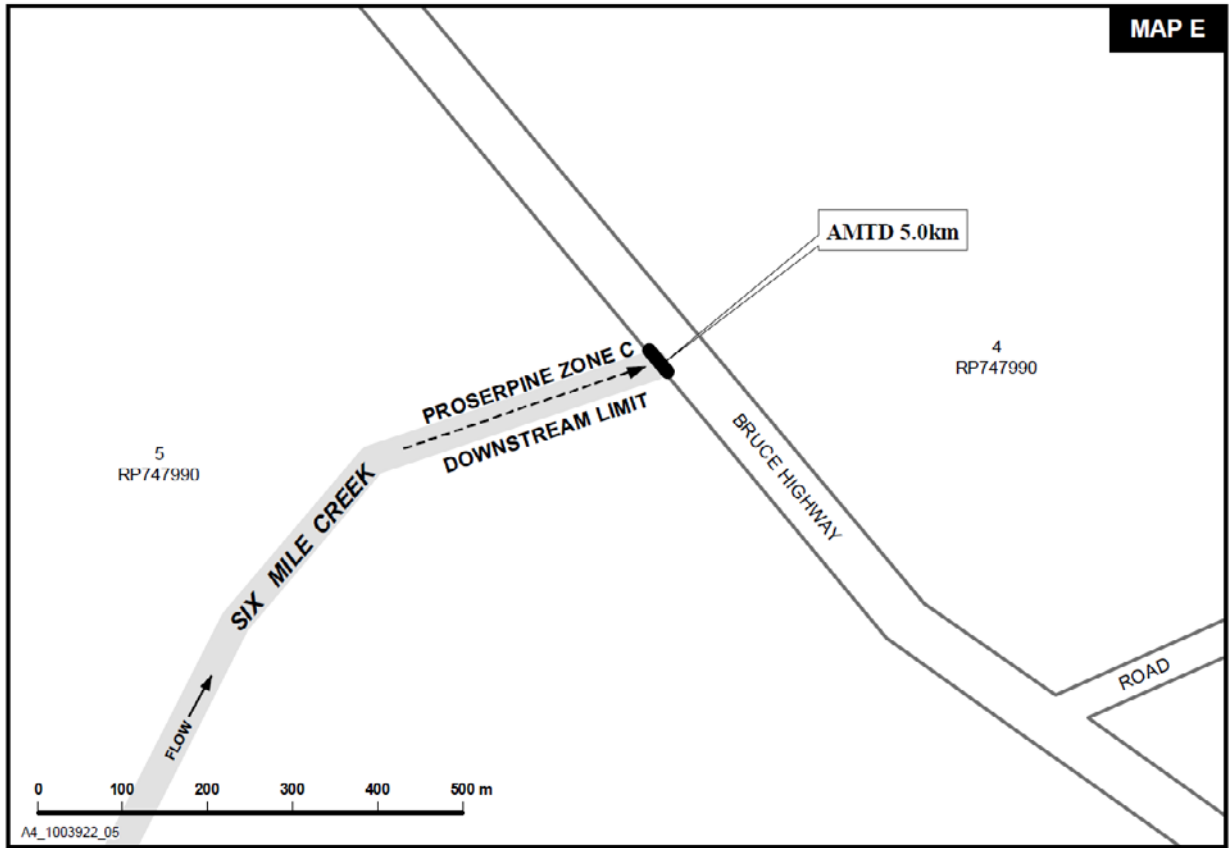
Attachment 2 (b) Resource operations plan zones (supplemented water) for the Proserpine River Water Supply Scheme

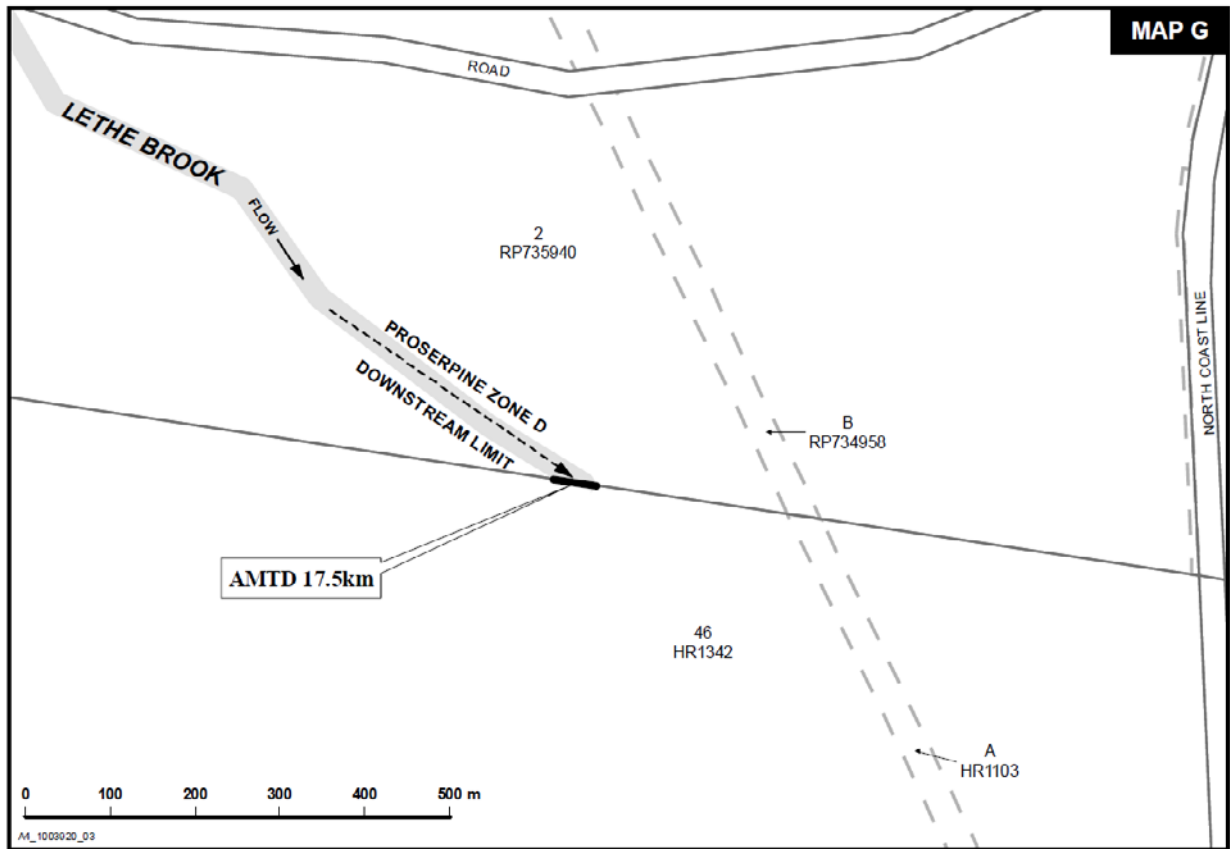


Attachment 2 (c) Zone limits for resource operations plan zones (supplemented water)









Attachment 3 Links between this plan and the Water Resource (Whitsunday) Plan 2010

General Outcomes of the Water Resource (Whitsunday) Plan 2010 (section 11)	Resource Operations Plan rules
11 (1) Each of the following is a general outcome for water in the plan area—	
(a) to protect the probability of being able to take water under a water allocation.	<ul style="list-style-type: none"> • dealing with unallocated water • granting, amending and converting authorisations • operating and environmental management rules • water sharing rules • dealing with water licence applications
(b) to support water-related cultural values, including the cultural values of Aboriginal and Torres Strait Islander communities, in the plan area.	<ul style="list-style-type: none"> • operating and environmental management rules • water sharing rules
(c) to provide for the continued use of all— (i) existing water entitlements; (ii) existing overland flow works; and (iii) existing water bores.	<ul style="list-style-type: none"> • granting, amending and converting authorisations • water sharing rules • dealing with water licence applications • granting water licences for taking overland flow water
(d) to make water available to support— (i) irrigated agriculture in the plan area; (ii) urban and industrial growth in the plan area; (iii) stock or domestic purposes in the plan area; and (iv) water-related aesthetic, economic and recreational values in the plan area, including, for example, tourism.	<ul style="list-style-type: none"> • dealing with unallocated water • granting, amending and converting authorisations • water sharing rules • dealing with water licence applications
(e) to make surface water in the following areas available to support growth in irrigated agriculture and water supply for urban and industrial uses— (i) subcatchment area B; (ii) subcatchment area C; (iii) subcatchment area D;and (iv) subcatchment area E.	<ul style="list-style-type: none"> • dealing with unallocated water • granting, amending and converting authorisations • water sharing rules
(f) to maintain the ability to take surface water for stock or domestic purposes.	<ul style="list-style-type: none"> • dealing with unallocated water • dealing with water licence applications
(g) to encourage continual improvement in the efficient use of water.	<ul style="list-style-type: none"> • water sharing rules • scheme licence holder monitoring and reporting
(h) to ensure water is available to support natural ecosystem processes.	<ul style="list-style-type: none"> • operating and environmental management rules

	<ul style="list-style-type: none"> • monitoring and reporting (chief executive) • scheme licence holder monitoring and reporting
General Ecological Outcomes (section 12)	Resource Operations Plan rules
12 (1) Each of the following is a general ecological outcome for water in the plan area—	
(a) to maintain the natural variability of flows that support the habitats of native plants and animals and migratory birds in watercourses, floodplains, wetlands, lakes and springs.	<ul style="list-style-type: none"> • operating and environmental management rules • monitoring and reporting (chief executive) • scheme licence holder monitoring and reporting
(b) to provide for the continued capability of 1 part of a river system to be connected to another, including by maintaining flood flows that— <ul style="list-style-type: none"> (i) allow for the movement of native aquatic animals; between riverine, floodplain, wetland, estuarine and marine environments; (ii) deliver nutrients and organic matter throughout the plan area to support natural processes such as breeding, growth and migration in riverine, floodplain, wetland, estuarine and marine environments; and (iii) deliver water and sediments throughout the plan area to support river-forming processes. 	<ul style="list-style-type: none"> • operating and environmental management rules • monitoring and reporting (chief executive) • scheme licence holder monitoring and reporting
(c) to minimise changes to natural variability in water levels and to support natural ecological processes, including maintaining refugia associated with waterholes and lakes.	<ul style="list-style-type: none"> • operating and environmental management rules • monitoring and reporting (chief executive) • scheme licence holder monitoring and reporting
(d) to promote improved understanding of the matters affecting the flow-related health of ecosystems in the plan area..	<ul style="list-style-type: none"> • monitoring and reporting (chief executive)
(e) to provide a flow regime that— <ul style="list-style-type: none"> (i) supports native fish passage within watercourses in the plan area; (ii) supports ecological productivity in the receiving waters of the Great Barrier Reef, inshore reefs and Repulse Bay; (iii) maintains delivery of fresh water to the estuaries of watercourses in the plan area and Repulse Bay; and (iv) maintains natural sedimentation processes to support delivery of sediment and nutrients to estuaries in the plan area. 	<ul style="list-style-type: none"> • operating and environmental management rules • monitoring and reporting (chief executive) • scheme licence holder monitoring and reporting

General ecological outcomes relating only to groundwater (section 13)	Resource Operations Plan rules
Each of the following is a general ecological outcome relating to groundwater in the plan area—	
(a) to maintain groundwater contributions to the flow of water in watercourses, lakes and springs	<ul style="list-style-type: none"> • monitoring and reporting (chief executive)
(b) to support the ecosystems dependent on groundwater, including, for example, riparian vegetation, wetlands and waterholes.	<ul style="list-style-type: none"> • monitoring and reporting (chief executive)
(c) to provide continued connectivity between watercourses, lakes and springs, and aquifers.	<ul style="list-style-type: none"> • operating and environmental management rules • monitoring and reporting (chief executive) • scheme licence holder monitoring and reporting
Specific Ecological Outcomes (section 14)	Resource Operations Plan rules
Each of the following is a specific ecological outcome for water in the plan area—	
(a) to minimise adverse impacts on the ecology and morphology of watercourses, lakes and springs in the Proserpine River Water Supply Scheme used for taking supplemented water while recognising changes to the flow regime of the watercourses, lakes and springs resulting from water resource development.	<ul style="list-style-type: none"> • operating and environmental management rules • monitoring and reporting (chief executive) • scheme licence holder monitoring and reporting
(b) to maintain flood flows to the estuarine and marine environments of Repulse Bay to stimulate breeding, growth and migration of native aquatic animals.	<ul style="list-style-type: none"> • operating and environmental management rules • monitoring and reporting (chief executive) • scheme licence holder monitoring and reporting
(c) to maintain the natural variability of flood flows that inundate, and deliver nutrients, organic matter and sediment to, the wetlands of the area known as the Proserpine–Goorganga Plain Wetland.	<ul style="list-style-type: none"> • operating and environmental management rules • monitoring and reporting (chief executive) • scheme licence holder monitoring and reporting

Attachment 4 Infrastructure details

Part 1 Infrastructure operated by the resource operations licence holder

Peter Faust Dam—Proserpine River—AMTD 57.7km

Description of water infrastructure	
Description	Dam with an earth and rock fill embankment 530m long and 56m high
Full supply level	EL 85.60 m AHD
Minimum operating level	EL 53.10 m AHD
Saddle dam(s)	Nil
Fabridam	Nil
Gates	Nil
Storage capacity	
Full supply volume	491 400 ML
Minimum operating volume	970 ML
Storage curves / tables	Drawing: A3-213324
Spillway arrangement	
Description of works	Reinforced concrete ogee spillway crest. Pipe discharge is controlled on the downstream end by two 1200mm diameter butterfly valves and two 750mm diameter cone dispersion valves.
Spillway level	Crest EL 85.60 m AHD Two 1200mm diameter outlets. Invert EL 48.39m AHD. River outlet construction conduit EL 47.80m AHD blanked off.
Spillway width	30 m
Discharge characteristics	Spillway capacity 22.87 m ³ /s (water level at 86.07 m AHD) Drawing No: A3-101613 Spillway capacity 1 660 m ³ /s at 92.6m AHD (maximum water level)
River inlet/outlet works	
Description works	The river outlet is controlled by two 1200mm diameter butterfly valves and two 750mm diameter cone dispersion valves, the Kelsey Creek outlet by one 900mm diameter butterfly valve and one 600mm gate valve.
Inlet	Reinforced concrete inlet tower with full height removal screens and baulks facing upstream. Pipe conduit 2400mm diameter to valve house. Baulks allow multi level off-take
Cease to flow levels	EL 53.1 m AHD
Maximum discharge rate	1728 ML/day (Two outlet valves @10m ³ /s)
Fish transfer system	
Description of works	Nil

Part 2 Infrastructure operated by the distribution operations licence holder—Six Mile Creek Water Supply Board

Six Mile Creek balancing weir—AMTD 7.3 km

Description of water infrastructure	
Storage capacity	17 ML
Maximum discharge rate	8 ML/day

Six Mile Creek flow control—road crossing AMTD 9.5 km

Description of water infrastructure	
Storage capacity	5 ML
Maximum discharge rate	400 ML/day

Six Mile Creek Water Supply Board channel

Maximum discharge capacity	
Outlet from Proserpine River AMTD 48.7 km	52 ML/day

Six Mile Creek Water Supply Board pumps—Proserpine River AMTD 48.7 km

Description of water infrastructure	
Pump 1 – submersible	26 ML/day (300 L/s)
Pump 2 – submersible	26 ML/day (300 L/s)

Part 3 Infrastructure operated by the distribution operations licence holder—Kelsey Creek Water Board

Kelsey Creek gauging station weir—AMTD 2.1 km

Description of water infrastructure	
Storage capacity	2 ML
Discharge capacity	N/A

Lethe Brook gauging station weir—AMTD 26.7 km

Description of water infrastructure	
Storage capacity	2 ML
Discharge capacity	N/A

Kelsey Creek Water Board channel

Maximum discharge capacity	
Outlet to channel at Peter Faust Dam	207 ML/day
Channel outlet to La-di-da Creek AMTD 1.2 km	207 ML/day

Attachment 5 Resource and distribution operations licence holder responsibilities

Section description	Proserpine River Water Supply Scheme		
	Resource operations licence holder	Distribution operations licence holder (Six Mile Creek Water Supply Board)	Distribution operations licence holder (Kelsey Creek Water Board)
Chapter 1—Preliminary			
Section 11—Metering	✓	✓	✓
Section 12—Departmental water monitoring data collection standard	✓		
Section 13—Departmental water monitoring data reporting standard	✓	✓	✓
Section 14—Operating and environmental management rules and monitoring requirements	✓	✓	✓
Section 15—Implementation	✓	✓	✓
Chapter 4—Proserpine River Water Supply Scheme			
Section 90—Use of watercourses for distribution	✓	✓	✓
Section 91—Operating levels for Peter Faust Dam	✓		
Section 92—Change in rate of release from Peter Faust Dam	✓		
Section 93—Quality of water downstream of Peter Faust Dam	✓		
Sections 94 to 102—Water sharing rules	✓		
Sections 113 to 114—Seasonal water assignment rules	✓	✓	✓
Chapter 10—Scheme licence holder monitoring and reporting			
Section 225—Stream flow and storage water level data	✓		
Section 226—Releases from storages	✓		
Section 227—Announced allocations	✓		
Section 228—Water taken by water users	✓	✓	✓
Section 229—Seasonal water assignment of water allocation	✓	✓	✓
Section 230—Critical water supply arrangements	✓		
Section 231—Carryover	✓		
Section 232—Water quality	✓		
Section 233—Bank condition	✓		
Section 234—Fish stranding	✓	✓	✓
Section 235—Monitoring data must be made available	✓	✓	✓
Section 236—Transfer of data by		✓	✓

Section description	Proserpine River Water Supply Scheme		
	Resource operations licence holder	Distribution operations licence holder (Six Mile Creek Water Supply Board)	Distribution operations licence holder (Kelsey Creek Water Board)
distribution operations licence holder			
Section 238—Quarterly reporting by the resource operations licence holder	✓		
Section 239—Annual reporting by the resource operations licence holder	✓		
Section 240—Water quantity monitoring	✓		
Section 241—Impact of storage operation on aquatic ecosystem	✓		
Section 242—Operational reporting by the scheme licence holder	✓	✓	✓
Section 244—Emergency reporting by the scheme licence holder	✓	✓	✓

Attachment 6 (a) Water Allocation Schedules

Part 1 Water allocations managed under the resource operations licence for the Proserpine River Water Supply Scheme¹⁰

Water Allocation Number	Family Name / Company	Given Names	Tenancy Type	Share of Water Allocation	Tenancy Comments	Location ¹¹	Purpose	Other Condition	Nominal Volume	Priority Group	Converting Authorisation
48	WHITSUNDAY REGIONAL COUNCIL		Sole Proprietor	1		PROSERPINE ZONE A	ANY	Nil	2840	HIGH-A	103022
49	MACKAY REGIONAL COUNCIL		Sole Proprietor	1		PROSERPINE ZONE B	ANY	Nil	2700	HIGH-A	103028
50	PROSERPINE CO-OPERATIVE SUGAR MILLING ASSOCIATION LIMITED ARBN 080866539		Sole Proprietor	1		PROSERPINE ZONE B	ANY	Nil	550	HIGH-A	32172L
51	SUNWATER LIMITED ACN 131034985		Sole Proprietor	1		PROSERPINE ZONE A	ANY	Nil	7965	HIGH-A	103002
52	SUNWATER LIMITED ACN 131034985		Sole Proprietor	1		PROSERPINE ZONE A	ANY	Nil	2552	HIGH-A	103005

¹⁰ Details correct as of 23 September 2011

¹¹ The nominal location for a water allocation is the same as the location

Whitsunday Resource Operations Plan

Attachments

Water Allocation Number	Family Name / Company	Given Names	Tenancy Type	Share of Water Allocation	Tenancy Comments	Location ¹¹	Purpose	Other Condition	Nominal Volume	Priority Group	Converting Authorisation
53	WHITSUNDAY REGIONAL COUNCIL		Sole Proprietor	1		PROSERPINE ZONE B	ANY	Nil	5393	HIGH-A	103031
54	C3BM PTY LTD ACN 131 988 184		Trustee	1	Under Instrument No. 712106720	PROSERPINE ZONE A	RURAL	Nil	18	MEDIUM-A1	174159
55	ALLAN DOBBINS DOBBINS COLLYER COLLYER	DAVID LAURENCE MICHAEL GAYLE MAREE PETER CHARLES EARLENE LOUISE	Tenant in Common	1/5 1/5 1/5 1/5 1/5		PROSERPINE ZONE A	RURAL	Nil	45	MEDIUM-A1	174165
56	ALTMANN ALTMANN	ERIC LINDSAY OWEN HARVEY	Tenant in Common	1/2 1/2		PROSERPINE ZONE B	RURAL	Nil	81	MEDIUM-A1	81514L
57	HINSCHEN HINSCHEN HINSCHEN HINSCHEN	ANTHONY QUENTIN IAN NICHOLAS ANTHONY QUENTIN IAN NICHOLAS	Trustee	1/4 1/4 1/4 1/4	Under instrument No. 705533105 Under Instrument No. 709662864	PROSERPINE ZONE B	RURAL	Nil	245	MEDIUM-A1	46072L

Whitsunday Resource Operations Plan

Attachments

Water Allocation Number	Family Name / Company	Given Names	Tenancy Type	Share of Water Allocation	Tenancy Comments	Location ¹¹	Purpose	Other Condition	Nominal Volume	Priority Group	Converting Authorisation
58	HINSCHEN HINSCHEN	ANTHONY QUENTIN IAN NICHOLAS	Trustee	1	Under Instrument No. 702089649	PROSERPINE ZONE A	RURAL	Nil	74	MEDIUM-A1	63034L
59	ATKINSON	PAUL	Sole Proprietor	1		PROSERPINE ZONE B	RURAL	Nil	200	MEDIUM-A1	46598L
60	ATKINSON ATKINSON	JENNIFER PAM JOSEPH	Joint Tenant	1		PROSERPINE ZONE B	RURAL	Nil	80	MEDIUM-A1	81036L
61	ATKINSON ATKINSON	CHARLES GARFIELD LISA SUSAN	Tenant in Common	1/2 1/2		PROSERPINE ZONE B	RURAL	Nil	222	MEDIUM-A1	81166L
62	ATKINSON ATKINSON	WILLIAM ELIZABETH ANN	Tenant in Common	1/2 1/2		PROSERPINE ZONE A	RURAL	Nil	195	MEDIUM-A1	81168L
63	BATES	EDWARD JAMES	Sole Proprietor	1		PROSERPINE ZONE A	RURAL	Nil	200	MEDIUM-A1	46180L
64	BENNETT BENNETT	GREGORY JOHN MARK WILLIAM	Tenant in Common	1/2 1/2		PROSERPINE ZONE B	RURAL	Nil	240	MEDIUM-A1	179037
65	BENNETT BENNETT	GREGORY JOHN MARK WILLIAM	Tenant in Common	1/2 1/2		PROSERPINE ZONE B	RURAL	Nil	113	MEDIUM-A1	55621L
66	BENNETT BENNETT	GREGORY JOHN MARK WILLIAM	Tenant in Common	1/2 1/2		PROSERPINE ZONE A	RURAL	Nil	308	MEDIUM-A1	63300L

Water Allocation Number	Family Name / Company	Given Names	Tenancy Type	Share of Water Allocation	Tenancy Comments	Location ¹¹	Purpose	Other Condition	Nominal Volume	Priority Group	Converting Authorisation
67	BENNETT BENNETT	GREGORY JOHN MARK WILLIAM	Tenant in Common	1/2 1/2		PROSERPINE ZONE A	RURAL	Nil	295	MEDIUM-A1	63322L
68	BENNETT BENNETT	GREGORY JOHN MARK WILLIAM	Tenant in Common	1/2 1/2		PROSERPINE ZONE A	RURAL	Nil	140	MEDIUM-A1	81164L
69	BIGGS	TREVOR JOHN	Sole Proprietor	1		PROSERPINE ZONE B	RURAL	Nil	142	MEDIUM-A1	32675L
70	BIGGS	RUSSELL WILLIAM	Sole Proprietor	1		PROSERPINE ZONE B	RURAL	Nil	407	MEDIUM-A1	85469L
71	CAMM CAMM	RONALD FRANCIS TOLMA ROSE	Tenant in Common	1/2 1/2		PROSERPINE ZONE B	RURAL	Nil	100	MEDIUM-A1	81939L
72	BLAIR BROTHERS PTY LTD ACN 009968763		Sole Proprietor	1		PROSERPINE ZONE B	RURAL	Nil	286	MEDIUM-A1	81448L
73	BLAIR BLAIR	WILLIAM GEOFFREY SHIRALEE GAYLE	Tenant in Common	1/2 1/2		PROSERPINE ZONE B	RURAL	Nil	480	MEDIUM-A1	81456L
74	BORELLINI	RONI EMILIO	Sole Proprietor	1		PROSERPINE ZONE B	RURAL	Nil	150	MEDIUM-A1	63325L
75	BORELLINI BORELLINI	RONI EMILIO SCOTT JOSEPH	Tenant in Common	1/2 1/2		PROSERPINE ZONE B	RURAL	Nil	95	MEDIUM-A1	63060L

Whitsunday Resource Operations Plan

Attachments

Water Allocation Number	Family Name / Company	Given Names	Tenancy Type	Share of Water Allocation	Tenancy Comments	Location ¹¹	Purpose	Other Condition	Nominal Volume	Priority Group	Converting Authorisation
76	BOTTO BOTTO	STEVEN RAYMOND PATRICIA RUTH	Tenant in Common	1/2 1/2		PROSERPINE ZONE A	RURAL	Nil	344	MEDIUM-A1	46831L
77	BOTTO BOTTO	RAYMOND PATRICIA MARGARET	Tenant in Common	1/2 1/2		PROSERPINE ZONE B	RURAL	Nil	84	MEDIUM-A1	46832L
78	BOTTO BOTTO	STEVEN RAYMOND PATRICIA RUTH	Tenant in Common	1/2 1/2		PROSERPINE ZONE A	RURAL	Nil	74	MEDIUM-A1	63010L
79	PENHALLURICK PENHALLURICK	BRUCE WALTER KAREN MARGARET	Tenant in Common	1/2 1/2		PROSERPINE ZONE A	RURAL	Nil	222	MEDIUM-A1	46309L
80	PENHALLURICK PENHALLURICK	BRUCE WALTER KAREN MARGARET	Tenant in Common	1/2 1/2		PROSERPINE ZONE A	RURAL	Nil	17	MEDIUM-A1	46603L
81	PENHALLURICK PENHALLURICK	BRUCE WALTER KAREN MARGARET	Tenant in Common	1/2 1/2		PROSERPINE ZONE A	RURAL	Nil	252	MEDIUM-A1	85256L
82	CAMM CAMM	RONALD FRANCIS TOLMA ROSE	Tenant in Common	1/2 1/2		PROSERPINE ZONE A	RURAL	Nil	351	MEDIUM-A1	63224L
83	CLARKE CLARKE	ANDREA KAY GLENN ANDREW	Joint Tenant	1		PROSERPINE ZONE B	RURAL	Nil	169	MEDIUM-A1	49349L

Whitsunday Resource Operations Plan

Attachments

Water Allocation Number	Family Name / Company	Given Names	Tenancy Type	Share of Water Allocation	Tenancy Comments	Location ¹¹	Purpose	Other Condition	Nominal Volume	Priority Group	Converting Authorisation
84	CANTAMESSA CANTAMESSA	MICHAEL JOHN STEVEN CRAIG	Tenant in Common	1/2 1/2		PROSERPINE ZONE B	RURAL	Nil	150	MEDIUM-A1	43022L
85	DRAY'S PTY LTD ACN 058 277 624		Sole Proprietor	1		PROSERPINE ZONE B	RURAL	Nil	264	MEDIUM-A1	44683L
86	DRAY'S PTY LTD ACN 058 277 624		Sole Proprietor	1		PROSERPINE ZONE B	RURAL	Nil	224	MEDIUM-A1	46583L
87	DRAY'S PTY LTD ACN 058 277 624		Sole Proprietor	1		PROSERPINE ZONE B	RURAL	Nil	392	MEDIUM-A1	46590L
88	DRAY	GENEVIEVE AMY	Tenant in Common	1/7		PROSERPINE ZONE B	RURAL	Nil	88	MEDIUM-A1	63135L
	DRAY	EDWARD JOSEPH		1/7							
	DRAY	NOELINE EUNICE		1/7							
	DRAY	GEOFFREY CHARLES		1/7							
	DRAY	MARGARET DAWN		1/7							
	DRAY DRAY	MICHAEL JOHN INES ELISA		1/7 1/7							
89	DRAY'S PTY LTD ACN 058 277 624		Sole Proprietor	1		PROSERPINE ZONE B	RURAL	Nil	88	MEDIUM-A1	63242L
90	FALETTI	MAURICE RAYMOND	Sole Proprietor	1		PROSERPINE ZONE B	RURAL	Nil	56	MEDIUM-A1	46027L
91	FALETTI	GIOVANNI	Tenant in Common	1/2		PROSERPINE ZONE B	RURAL	Nil	102	MEDIUM-A1	0548073L
	FALETTI	SANDRA LUIGINA		1/2							
92	FALETTI	GIOVANNI	Tenant in Common	1/2		PROSERPINE ZONE B	RURAL	Nil	140	MEDIUM-A1	63004L
	FALETTI	SANDRA LUIGINA		1/2							

Water Allocation Number	Family Name / Company	Given Names	Tenancy Type	Share of Water Allocation	Tenancy Comments	Location ¹¹	Purpose	Other Condition	Nominal Volume	Priority Group	Converting Authorisation
93	FAUST FAUST	PETER MARGARET ELLEN	Tenant in Common	1/2 1/2		PROSERPINE ZONE B	RURAL	Nil	573	MEDIUM-A1	0548383L
94	FALETTI FALETTI	GIOVANNI SANDRA LUIGINA	Tenant in Common	1/2 1/2		PROSERPINE ZONE B	RURAL	Nil	110	MEDIUM-A1	63011L
95	FERRARIS FERRARIS	JOHN EDWARD JULIE EDITH IRENE	Tenant in Common	1/2 1/2		PROSERPINE ZONE B	RURAL	Nil	188	MEDIUM-A1	63009L
96	FORSTER FORSTER	DAVID ROBERT JOY DORA RUTH	Tenant in Common	1/2 1/2		PROSERPINE ZONE B	RURAL	Nil	120	MEDIUM-A1	0548063L
97	ATKINSON ATKINSON ATKINSON	PAUL ELIZABETH ANN WILLIAM	Tenant in Common	1/3 1/3 1/3		PROSERPINE ZONE B	RURAL	Nil	152	MEDIUM-A1	81165L
98	FULLER FULLER FULLER	GEOFFREY JAMES OWEN ERNEST WARREN PHILIP	Personal Representative	1	Under Instrument No. 709575886	PROSERPINE ZONE B	RURAL	Nil	116	MEDIUM-A1	81513L
99	BAKER BAKER	BRYAN LEONARD KAREN RAE	Tenant in Common	1/2 1/2		PROSERPINE ZONE B	RURAL	Nil	210	MEDIUM-A1	81515L
100	HADLOW	STACEY GEORGE	Sole Proprietor	1		PROSERPINE ZONE B	RURAL	Nil	450	MEDIUM-A1	81486L
101	HINSCHEN HINSCHEN	CLIVE RICHARD BARBARA ANN	Tenant in Common	1/2 1/2		PROSERPINE ZONE A	RURAL	Nil	1	MEDIUM-A1	174163

Whitsunday Resource Operations Plan

Attachments

Water Allocation Number	Family Name / Company	Given Names	Tenancy Type	Share of Water Allocation	Tenancy Comments	Location ¹¹	Purpose	Other Condition	Nominal Volume	Priority Group	Converting Authorisation
102	HINSCHEN HINSCHEN	CLIVE RICHARD BARBARA ANN	Tenant in Common	1/2 1/2		PROSERPINE ZONE A	RURAL	Nil	2	MEDIUM-A1	63383L
103	MOODY HINSCHEN ERIKSSON MCCARTHY HINSCHEN HINSCHEN	MARIE ROSE AGNES RAYMOND JOHN SHIRLEY ANN DIANE IRENE GLENN THERESE LEX KENNETH	Tenant in Common	1/6 1/6 1/6 1/6 1/6		PROSERPINE ZONE B	RURAL	Nil	28	MEDIUM-A1	49330L
104	HOFFMANN	ALAN JEFFERY	Sole Proprietor	1		PROSERPINE ZONE A	RURAL	Nil	140	MEDIUM-A1	81472L
105	HOFFMANN HOFFMANN HOFFMANN	COLIN FREDERICK LENA ALAN JEFFEREY	Tenant in Common	1/3 1/3 1/3		PROSERPINE ZONE A	RURAL	Nil	593	MEDIUM-A1	63455L
106	IVO BOTTA PTY LTD ACN 009 952 890		Sole Proprietor	1		PROSERPINE ZONE B	RURAL	Nil	725	MEDIUM-A1	46572L
107	JONES TUFFIN	TONY MARK MARYANN JUDITH	Tenant in Common	1/2 1/2		PROSERPINE ZONE A	RURAL	Nil	1	MEDIUM-A1	63318L
108	LARGE	NORMAN CHARLES	Sole Proprietor	1		PROSERPINE ZONE B	RURAL	Nil	230	MEDIUM-A1	184485
109	LARGE	ANTHONY JOSEPH	Sole Proprietor	1		PROSERPINE ZONE B	RURAL	Nil	159	MEDIUM-A1	185418

Whitsunday Resource Operations Plan

Attachments

Water Allocation Number	Family Name / Company	Given Names	Tenancy Type	Share of Water Allocation	Tenancy Comments	Location ¹¹	Purpose	Other Condition	Nominal Volume	Priority Group	Converting Authorisation
110	LARGE	ANTHONY JOSEPH	Sole Proprietor	1		PROSERPINE ZONE B	RURAL	Nil	262	MEDIUM-A1	31868L
111	LARGE	NORMAN CHARLES	Sole Proprietor	1		PROSERPINE ZONE A	RURAL	Nil	120	MEDIUM-A1	63321L
112	MULLER	LARRY JAMES	Tenant in Common	1/3		PROSERPINE ZONE A	RURAL	Nil	403	MEDIUM-A1	46491L
	MULLER	KENNETH JOHN		1/3							
	MULLER	RONALD JOHN		1/3							
113	MULLER	KENNETH JOHN	Tenant in Common	1/3		PROSERPINE ZONE B	RURAL	Nil	228	MEDIUM-A1	63425L
	MULLER	RONALD JOHN		1/3							
	MULLER	LARRY JAMES		1/3							
114	MULLER	LARRY JAMES	Tenant in Common	1/3		PROSERPINE ZONE A	RURAL	Nil	65	MEDIUM-A1	81158L
	MULLER	KENNETH JOHN		1/3							
	MULLER	RONALD JOHN		1/3							
115	LAURENCE	OSCAR JON	Sole Proprietor	1		PROSERPINE ZONE B	RURAL	Nil	276	MEDIUM-A1	179036
116	LEE	DOUGLAS JOHN	Tenant in Common	1/2		PROSERPINE ZONE A	RURAL	Nil	164	MEDIUM-A1	46834L
	LEE	ANTONIETTA MARIE		1/2							
117	LEE	MICHEAL ROBERT	Tenant in Common	1/2		PROSERPINE ZONE B	RURAL	Nil	90	MEDIUM-A1	81504L
	LEE	CAROLINE IRENE		1/2							
118	MAGNETTI MAGNETTI	HENRY MARGHERITA	Joint Tenant	1		PROSERPINE ZONE B	RURAL	Nil	259	MEDIUM-A1	63055L
119	MATTHEWS MATTHEWS	VALERIE JOAN WILLIAM	Joint Tenant	1		PROSERPINE ZONE B	RURAL	Nil	154	MEDIUM-A1	30527L

Whitsunday Resource Operations Plan

Attachments

Water Allocation Number	Family Name / Company	Given Names	Tenancy Type	Share of Water Allocation	Tenancy Comments	Location ¹¹	Purpose	Other Condition	Nominal Volume	Priority Group	Converting Authorisation
120	PATULLO	GLEN ALFRED DALTON	Tenant in Common	1/3		PROSERPINE ZONE B	RURAL	Nil	88	MEDIUM-A1	55658L
	PATULLO	JENNIFER CHRISTINE		1/3							
	PATULLO	DANIEL JOSEPH		1/3							
121	MCDONALD	JUNE ROSE	Tenant in Common	1/2		PROSERPINE ZONE B	RURAL	Nil	190	MEDIUM-A1	28031L
	MCDONALD	MICHAEL JOHN		1/2							
122	MCDOWALL	RUSSELL STANLEY	Tenant in Common	1/2		PROSERPINE ZONE A	RURAL	Nil	213	MEDIUM-A1	46667L
	MCDOWALL	GRAHAM JOHN CHARLES		1/2							
123	MCLIESH	NEVILLE EDGAR	Sole Proprietor	1		PROSERPINE ZONE A	RURAL	Nil	1	MEDIUM-A1	63317L
124	MCPHERSON	NORMAN FREDERICK	Sole Proprietor	1		PROSERPINE ZONE B	RURAL	Nil	108	MEDIUM-A1	81485L
125	MCPHERSON	NORMAN FREDERICK	Sole Proprietor	1		PROSERPINE ZONE B	RURAL	Nil	152	MEDIUM-A1	85472L
126	MIOTTO	PETER	Tenant in Common	1/2		PROSERPINE ZONE A	RURAL	Nil	87	MEDIUM-A1	81512L
	MIOTTO	JUDITH JAN		1/2							
127	MORANINO	ROBERT PETER	Tenant in Common	1/2		PROSERPINE ZONE B	RURAL	Nil	378	MEDIUM-A1	187455
	MORANINO	JENNIFER MARIE		1/2							
128	MORETTO	GIOVANNI MARTINO	Sole Proprietor	1		PROSERPINE ZONE B	RURAL	Nil	528	MEDIUM-A1	81596L
129	MULLER	KAREN MICHELLE	Joint Tenant	1		PROSERPINE ZONE A	RURAL	Nil	186	MEDIUM-A1	46615L
	MULLER	REGINALD JAMES									

Whitsunday Resource Operations Plan

Attachments

Water Allocation Number	Family Name / Company	Given Names	Tenancy Type	Share of Water Allocation	Tenancy Comments	Location ¹¹	Purpose	Other Condition	Nominal Volume	Priority Group	Converting Authorisation
130	MULLER MULLER MULLER	LARRY JAMES RONALD JOHN KENNETH JOHN	Tenant in Common	1/3 1/3 1/3		PROSERPINE ZONE A	RURAL	Nil	235	MEDIUM-A1	63001L
131	NICOL NICOL	JOHN ALEXANDER RITA LUCILLE	Tenant in Common	1/2 1/2		PROSERPINE ZONE B	RURAL	Nil	120	MEDIUM-A1	0548129L
132	NIELSEN	SCOTT EDWARD	Sole Proprietor	1		PROSERPINE ZONE B	RURAL	Nil	557	MEDIUM-A1	44024L
133	NIELSEN	SCOTT EDWARD	Sole Proprietor	1		PROSERPINE ZONE B	RURAL	Nil	174	MEDIUM-A1	63041L
134	ORR	ELNA LILLIAN	Sole Proprietor	1		PROSERPINE ZONE B	RURAL	Nil	392	MEDIUM-A1	63067L
135	ORR ORR	MARY MARK WAYNE	Tenant in Common	1/2 1/2		PROSERPINE ZONE A	RURAL	Nil	420	MEDIUM-A1	85478L
136	PENHALLURICK PENHALLURICK	JOHN EDWARD MARGARET ANN	Tenant in Common	1/2 1/2		PROSERPINE ZONE A	RURAL	Nil	348	MEDIUM-A1	85244L
137	PETERS CROSSLEY TELFORD OLIVETTA	KAY ROBYN PAM JAN	Tenant in Common	1/4 1/4 1/4 1/4		PROSERPINE ZONE B	RURAL	Nil	76	MEDIUM-A1	49485L
138	PETERS CROSSLEY TELFORD OLIVETTA	KAY ROBYN PAM JAN	Tenant in Common	1/4 1/4 1/4 1/4		PROSERPINE ZONE B	RURAL	Nil	80	MEDIUM-A1	63506L
140	PINI	ANDREW PAUL	Sole Proprietor	1		PROSERPINE ZONE B	RURAL	Nil	152	MEDIUM-A1	46048L
141	PINI PINI	ANDREW PAUL LEIGHANN JOY	Tenant in Common	1/2 1/2		PROSERPINE ZONE B	RURAL	Nil	373	MEDIUM-A1	44020L

Water Allocation Number	Family Name / Company	Given Names	Tenancy Type	Share of Water Allocation	Tenancy Comments	Location ¹¹	Purpose	Other Condition	Nominal Volume	Priority Group	Converting Authorisation
142	PRATT	WILLIAM ROBERT	Sole Proprietor	1		PROSERPINE ZONE B	RURAL	Nil	216	MEDIUM-A1	81169L
143	PRATT PRATT	DAVID NOEL ELIZABETH ANN	Tenant in Common	1/2 1/2		PROSERPINE ZONE B	RURAL	Nil	556	MEDIUM-A1	46842L
144	FAUST FAUST	KAREN CLARE CHARLES CHRISTOPHER	Tenant in Common	1/2 1/2		PROSERPINE ZONE A	RURAL	Nil	330	MEDIUM-A1	55700L
145	QUOD	LANCE FREDERIC	Sole Proprietor	1		PROSERPINE ZONE B	RURAL	Nil	354	MEDIUM-A1	63061L
146	RILEY RILEY	GEOFFREY SAMUEL ELAINE ALISON	Tenant in Common	1/2 1/2		PROSERPINE ZONE B	RURAL	Nil	427	MEDIUM-A1	81121L
147	RUDELL RUDELL	JEFFREY THOMAS JULIE-ANN MARGARET	Tenant in Common	1/2 1/2		PROSERPINE ZONE B	RURAL	Nil	164	MEDIUM-A1	15903L
148	RUDELL RUDELL	JEFFREY THOMAS JULIE-ANN MARGARET	Tenant in Common	1/2 1/2		PROSERPINE ZONE B	RURAL	Nil	100	MEDIUM-A1	55618L
149	SALA HOLDINGS PTY LTD ACN 010 024 530		Sole Proprietor	1		PROSERPINE ZONE B	RURAL	Nil	72	MEDIUM-A1	55597L
150	SANTREARK PTY LTD ACN 010 433 182		Sole Proprietor	1		PROSERPINE ZONE B	RURAL	Nil	196	MEDIUM-A1	102396

Water Allocation Number	Family Name / Company	Given Names	Tenancy Type	Share of Water Allocation	Tenancy Comments	Location ¹¹	Purpose	Other Condition	Nominal Volume	Priority Group	Converting Authorisation
151	SIMPSON SIMPSON	GARY WILLIAM PETER JOHN	Tenant in Common	1/2 1/2		PROSERPINE ZONE B	RURAL	Nil	295	MEDIUM-A1	81481L
152	MUNRO GUINEA	GREGORY JAMES ROBIN EILEEN MAY DOROTHY	Tenant in Common	1/2 1/2		PROSERPINE ZONE A	RURAL	Nil	42	MEDIUM-A1	46188L
153	SPRUCE SPRUCE	HERBERT JOHN PAULINE	Tenant in Common	1/2 1/2		PROSERPINE ZONE B	RURAL	Nil	365	MEDIUM-A1	63012L
154	STANILAND	RODERICK LANCE	Sole Proprietor	1		PROSERPINE ZONE A	RURAL	Nil	209	MEDIUM-A1	81109L
155	STANILAND	RODERICK LANCE	Sole Proprietor	1		PROSERPINE ZONE A	RURAL	Nil	150	MEDIUM-A1	81453L
156	STANLEY	SPENCE RICHARD	Sole Proprietor	1		PROSERPINE ZONE B	RURAL	Nil	432	MEDIUM-A1	31893L
157	TELFORD TELFORD	JOHN GEORGE RONALD ROBERT	Tenant in Common	1/2 1/2		PROSERPINE ZONE A	RURAL	Nil	250	MEDIUM-A1	63522L
158	TIBALDI	GIACOMO	Sole Proprietor	1		PROSERPINE ZONE B	RURAL	Nil	164	MEDIUM-A1	44676L
159	TROPIC ISLE RETAIL STORES PTY LTD ACN 010 482 845		Sole Proprietor	1		PROSERPINE ZONE A	RURAL	Nil	18	MEDIUM-A1	63315L
160	TROPIC ISLE RETAIL STORES PTY LTD ACN 010 482 845		Sole Proprietor	1		PROSERPINE ZONE B	RURAL	Nil	300	MEDIUM-A1	81762L

Whitsunday Resource Operations Plan

Attachments

Water Allocation Number	Family Name / Company	Given Names	Tenancy Type	Share of Water Allocation	Tenancy Comments	Location ¹¹	Purpose	Other Condition	Nominal Volume	Priority Group	Converting Authorisation
161	FALETTI BROTHERS PTY LTD ACN 107 648 420		Trustee	1	Under Instrument No. 711746354	PROSERPINE ZONE B	RURAL	Nil	120	MEDIUM-A1	85477L
162	WHITSUNDAY REGIONAL COUNCIL		Sole Proprietor	1		PROSERPINE ZONE B	RURAL	Nil	9	MEDIUM-A1	81360L
163	DRAY DRAY DRAY DRAY DRAY DRAY DRAY	GENEVIEVE AMY EDWARD JOSEPH NOELINE EUNICE GEOFFREY CHARLES MARGARET DAWN INES ELISA MICHAEL JOHN	Tenant in Common	1/7 1/7 1/7 1/7 1/7 1/7 1/7		PROSERPINE ZONE B	RURAL	Nil	208	MEDIUM-A1	408096

Whitsunday Resource Operations Plan

Attachments

Water Allocation Number	Family Name / Company	Given Names	Tenancy Type	Share of Water Allocation	Tenancy Comments	Location ¹¹	Purpose	Other Condition	Nominal Volume	Priority Group	Converting Authorisation
164	DRAY	GENEVIEVE AMY	Tenant in Common	1/7		PROSERPINE ZONE B	RURAL	Nil	184	MEDIUM-A1	408094
	DRAY	EDWARD JOSEPH		1/7							
	DRAY	NOELINE EUNICE		1/7							
	DRAY	GEOFFREY CHARLES		1/7							
	DRAY	MARGARET DAWN		1/7							
	DRAY	INES ELISA		1/7							
	DRAY	MICHAEL JOHN		1/7							
165	PRATT	WILLIAM ROBERT	Sole Proprietor	1		PROSERPINE ZONE B	RURAL	Nil	80	MEDIUM-A1	406304
166	BAKER	BRYAN LEONARD	Tenant in Common	1/2		PROSERPINE ZONE B	RURAL	Nil	213	MEDIUM-A1	406308
	BAKER	KAREN RAE		1/2							
167	PRATT	WILLIAM ROBERT	Sole Proprietor	1		PROSERPINE ZONE B	RURAL	Nil	255	MEDIUM-A1	406309
168	GROSSKREUTZ	JOHN ROBERT	Sole Proprietor	1		PROSERPINE ZONE B	RURAL	Nil	195	MEDIUM-A1	409221
169	KUNAPIPI SPRINGS PTY LTD ACN 070 507 676		Trustee	1	Under Instrument No. 710758128	PROSERPINE ZONE A	RURAL	Nil	2	MEDIUM-A1	490335

Water Allocation Number	Family Name / Company	Given Names	Tenancy Type	Share of Water Allocation	Tenancy Comments	Location ¹¹	Purpose	Other Condition	Nominal Volume	Priority Group	Converting Authorisation
170	LORRAWAY LORRAWAY	MARGARET JANE MARGARET JANE	Tenant in Common Personal Representative	7/8 1/8	 Under Instrument No 708349285	PROSERPINE ZONE A	RURAL	Nil	303	MEDIUM-A1	408429
171	WARABUD PTY LTD ACN 010 754 524		Trustee	1	Under Nomination of Trustees No. T328449J	PROSERPINE ZONE B	RURAL	Nil	600	MEDIUM-A1	408002
244	PETERS PETERS	GRAHAM CHARLES KAY	Joint Tenant	1		PROSERPINE ZONE B	RURAL	Nil	232	MEDIUM-A1	604593
245	PETERS PETERS	GRAHAM CHARLES KAY	Joint Tenant	1		PROSERPINE ZONE B	RURAL	Nil	225	MEDIUM-A1	604592

Part 2 Water allocations distributed under the distribution operations licence for Kelsey Creek Water Board and managed under the resource operations licence for the Proserpine River Water Supply Scheme¹²

Water Allocation Number	Family Name / Company	Given Names	Tenancy Type	Share of Water Allocation	Tenancy Comments	Location ¹³	Purpose	Other Condition	Nominal Volume	Priority	Converting Authorisation
15	DAVIES	CLIVE	Tenant in Common	1/2		PROSERPINE ZONE D	RURAL	Nil	200	MEDIUM-A3 PRIORITY	190579
	DAVIES	REGINALD WILLIAM JOHN		1/2							
16	EASDALE	WADE	Tenant in Common	1/2		PROSERPINE ZONE D	RURAL	Nil	50	MEDIUM-A3 PRIORITY	190588
	ERBACHER	HAMILTON LEO JOHN		1/2							
17	EMMERSON	DARCY ROBERT	Sole Proprietor	1		PROSERPINE ZONE D	RURAL	Nil	230	MEDIUM-A3 PRIORITY	35460L
18	EMMERSON	DARCY ROBERT	Tenant in Common	1/4		PROSERPINE ZONE D	RURAL	Nil	495	MEDIUM-A3 PRIORITY	0548207L
	EMMERSON	SHARRON		1/4							
	EMMERSON	CHRISTINE		1/4							
	EMMERSON	CRAIG KEITH ANTHIA MAREE		1/4							

¹² Details correct as of 23 September 2011

¹³ The nominal location for a water allocation is the same as the location

Water Allocation Number	Family Name / Company	Given Names	Tenancy Type	Share of Water Allocation	Tenancy Comments	Location ¹³	Purpose	Other Condition	Nominal Volume	Priority	Converting Authorisation
19	FAUST FAUST	PETER MARGARET ELLEN	Tenant in Common	1/2 1/2		PROSERPINE ZONE D	RURAL	Nil	396	MEDIUM-A3 PRIORITY	190583
20	FAUST FAUST	PETER MARGARET ELLEN	Tenant in Common	1/2 1/2		PROSERPINE ZONE D	RURAL	Nil	200	MEDIUM-A3 PRIORITY	190584
21	HADLOW	ELAINE FRANCIS	Sole Proprietor	1		PROSERPINE ZONE D	RURAL	Nil	317	MEDIUM-A3 PRIORITY	400016
22	HADLOW	STACEY GEORGE	Sole Proprietor	1		PROSERPINE ZONE D	RURAL	Nil	201	MEDIUM-A3 PRIORITY	400017
23	HADLOW HADLOW	DONALD GEOFFREY GAIL CHRISTINE	Tenant in Common	1/2 1/2		PROSERPINE ZONE D	RURAL	Nil	447	MEDIUM-A3 PRIORITY	0548244L
24	HADLOW HADLOW	STACEY GEORGE AMANDA MAREE	Tenant in Common	1/2 1/2		PROSERPINE ZONE D	RURAL	Nil	167	MEDIUM-A3 PRIORITY	101315
25	HINSCHEN	ROBERT ROSS	Sole Proprietor	1		PROSERPINE ZONE D	RURAL	Nil	301	MEDIUM-A3 PRIORITY	0548228L
26	ITC TIMBERLAND S LIMITED ACN 089781840		Sole Proprietor	1		PROSERPINE ZONE D	RURAL	Nil	400	MEDIUM-A3 PRIORITY	190582
27	KAY	GAIL PATRICIA	Sole Proprietor	1		PROSERPINE ZONE D	RURAL	Nil	220	MEDIUM-A3 PRIORITY	0548232L
28	LADE	ROBERT HAROLD	Sole Proprietor	1		PROSERPINE ZONE D	RURAL	Nil	300	MEDIUM-A3 PRIORITY	0548224L
29	LADE	ROBERT HAROLD	Sole Proprietor	1		PROSERPINE ZONE D	RURAL	Nil	240	MEDIUM-A3 PRIORITY	0548230L

Water Allocation Number	Family Name / Company	Given Names	Tenancy Type	Share of Water Allocation	Tenancy Comments	Location ¹³	Purpose	Other Condition	Nominal Volume	Priority	Converting Authorisation
30	LEE	GREGORY CLAUDE	Sole Proprietor	1		PROSERPINE ZONE D	RURAL	Nil	396	MEDIUM-A3 PRIORITY	0548212L
31	LEE	DOUGLAS JOHN	Sole Proprietor	1		PROSERPINE ZONE D	RURAL	Nil	485	MEDIUM-A3 PRIORITY	0548235L
32	LEE LEE	DOUGLAS JOHN ANTONIETT A MARIE	Tenant in Common	1/2 1/2		PROSERPINE ZONE D	RURAL	Nil	52	MEDIUM-A3 PRIORITY	0548238L
33	FRANKS COPP LEWIS DE NYSSCHEN FRANKS	STACEY ANN BEVERLEY JOYCE MARGARET ALLISON ALMEROE DENIS HARRY	Tenant in Common	1/5 1/5 1/5 1/5		PROSERPINE ZONE D	RURAL	Nil	6	MEDIUM-A3 PRIORITY	0548240L
34	LINNEWEBER LINNEWEBER	DELL LORRAINE FREDERICK PETER	Joint Tenant	1		PROSERPINE ZONE D	RURAL	Nil	200	MEDIUM-A3 PRIORITY	190586
35	LINTHWAITE LINTHWAITE	DONALD STANLEY NORMA MARY	Tenant in Common	1/2 1/2		PROSERPINE ZONE D	RURAL	Nil	195	MEDIUM-A3 PRIORITY	190587
36	MADEO MADEO	RAYMOND DENNIS	Tenant in Common	1/2 1/2		PROSERPINE ZONE D	RURAL	Nil	293	MEDIUM-A3 PRIORITY	408425
37	MADEO MADEO	RAYMOND DENNIS	Tenant in Common	1/2 1/2		PROSERPINE ZONE D	RURAL	Nil	300	MEDIUM-A3 PRIORITY	408426

Water Allocation Number	Family Name / Company	Given Names	Tenancy Type	Share of Water Allocation	Tenancy Comments	Location ¹³	Purpose	Other Condition	Nominal Volume	Priority	Converting Authorisation
38	MASON MASON	NOEL KENNETH ELSIE MAY	Tenant in Common	1/2 1/2		PROSERPINE ZONE D	RURAL	Nil	5	MEDIUM-A3 PRIORITY	0548246L
39	SPOOR SPOOR SPOOR	DALE CHRISTOPHER PETER ROBERT TREVOR ROBERT PETER	Tenant in Common	1/3 1/3 1/3		PROSERPINE ZONE D	RURAL	Nil	116	MEDIUM-A3 PRIORITY	190585
40	PRATT PRATT	DAVID NOEL ELIZABETH ANN	Tenant in Common	1/2 1/2		PROSERPINE ZONE D	RURAL	Nil	589	MEDIUM-A3 PRIORITY	190581
41	SPOOR SPOOR SPOOR	DALE CHRISTOPHER PETER ROBERT TREVOR ROBERT PETER	Tenant in Common	1/3 1/3 1/3		PROSERPINE ZONE D	RURAL	Nil	372	MEDIUM-A3 PRIORITY	0548225L
42	TONKS	CHARLES JOSEPH	Sole Proprietor	1		PROSERPINE ZONE D	RURAL	Nil	514	MEDIUM-A3 PRIORITY	190589
43	TONKS WILSON	CHARLES JOSEPH DAVID JOHN	Tenant in Common	1/2 1/2		PROSERPINE ZONE D	RURAL	Nil	200	MEDIUM-A3 PRIORITY	190590

Water Allocation Number	Family Name / Company	Given Names	Tenancy Type	Share of Water Allocation	Tenancy Comments	Location ¹³	Purpose	Other Condition	Nominal Volume	Priority	Converting Authorisation
44	TONKS WILSON WILSON	CHARLES JOSEPH DAVID JOHN VICTORIA LEE	Tenant in Common	1/3 1/3 1/3		PROSERPINE ZONE D	RURAL	Nil	317	MEDIUM-A3 PRIORITY	602937
45	VALMADRE	DONALD JOHN	Sole Proprietor	1		PROSERPINE ZONE D	RURAL	Nil	415	MEDIUM-A3 PRIORITY	0548234L
46	VALMADRE VALMADRE	GEOFFREY JOHN WILLIAM	Tenant in Common	1/2 1/2		PROSERPINE ZONE D	RURAL	Nil	1187	MEDIUM-A3 PRIORITY	0548218L
47	VALMADRE VALMADRE	GEOFFREY JOHN WILLIAM	Tenant in Common	1/2 1/2		PROSERPINE ZONE D	RURAL	Nil	194	MEDIUM-A3 PRIORITY	0548236L

Part 3 Water allocations distributed under the distribution operations licence for Six Mile Creek Water Supply Board and managed under the resource operations licence for the Proserpine River Water Supply Scheme¹⁴

Water Allocation Number	Family Name / Company	Given Names	Tenancy Type	Share of Water Allocation	Tenancy Comments	Location ¹⁵	Purpose	Other Condition	Nominal Volume	Priority	Converting Authorisation
1	HINSCHEN	ANTHONY QUENTIN	Trustee	1/2	Under Instrument No.s 705533105 and 709662864 and 709662887	PROSERPINE ZONE C	RURAL	Nil	280	MEDIUM-A2 PRIORITY	55548L
	HINSCHEN	IAN NICHOLAS		1/2							
2	ATKINSON ATKINSON	JENNIFER PAM JOSEPH	Joint Tenant	1		PROSERPINE ZONE C	RURAL	Nil	240	MEDIUM-A2 PRIORITY	55546L
3	GOUGH	GLENVILLE HENRY	Tenant in Common	1/2		PROSERPINE ZONE C	RURAL	Nil	300	MEDIUM-A2 PRIORITY	0548479L
	GOUGH	ROSEMARIE THERESE		1/2							
4	MATTHEWS MATTHEWS	VALERIE JOAN WILLIAM	Joint Tenant	1		PROSERPINE ZONE C	RURAL	Nil	80	MEDIUM-A2 PRIORITY	55542L

¹⁴ Details correct as of 23 September 2011

¹⁵ The nominal location for a water allocation is the same as the location

Water Allocation Number	Family Name / Company	Given Names	Tenancy Type	Share of Water Allocation	Tenancy Comments	Location ¹⁵	Purpose	Other Condition	Nominal Volume	Priority	Converting Authorisation
5	MULLER MULLER	KEVIN EDWARD PETER HOWARD	Tenant in Common	1/2 1/2		PROSERPINE ZONE C	RURAL	Nil	1020	MEDIUM- A2 PRIORITY	55552L
6	PATULLO	JOHN DARRELL	Sole Proprietor	1		PROSERPINE ZONE C	RURAL	Nil	140	MEDIUM- A2 PRIORITY	404468
7	PETERS PETERS	GRAHAM CHARLES KAY	Joint Tenant	1		PROSERPINE ZONE C	RURAL	Nil	120	MEDIUM- A2 PRIORITY	55519L
8	PETERS PETERS	GRAHAM CHARLES KAY	Joint Tenant	1		PROSERPINE ZONE C	RURAL	Nil	160	MEDIUM- A2 PRIORITY	55549L
9	TELFORD TELFORD	JOHN GEORGE RONALD ROBERT	Tenant in Common	1/2 1/2		PROSERPINE ZONE C	RURAL	Nil	400	MEDIUM- A2 PRIORITY	55547L
10	WOODS WOODS	MICHAEL GEOFFREY ZOSANA ARAS	Tenant in Common	1/2 1/2		PROSERPINE ZONE C	RURAL	Nil	60	MEDIUM- A2 PRIORITY	404469
11	DACHS DACHS	IAN STUART KAREN JO- ANNE	Tenant in Common	1/2 1/2		PROSERPINE ZONE C	RURAL	Nil	5	MEDIUM- A2 PRIORITY	407163
12	ATKINSON ATKINSON	WILLIAM ELIZABETH ANN	Tenant in Common	1/2 1/2		PROSERPINE ZONE C	RURAL	Nil	185	MEDIUM- A2 PRIORITY	407165
13	ATKINSON ATKINSON	WILLIAM ELIZABETH ANN	Tenant in Common	1/2 1/2		PROSERPINE ZONE C	RURAL	Nil	5	MEDIUM- A2 PRIORITY	490157

Whitsunday Resource Operations Plan

Attachments

Water Allocation Number	Family Name / Company	Given Names	Tenancy Type	Share of Water Allocation	Tenancy Comments	Location ¹⁵	Purpose	Other Condition	Nominal Volume	Priority	Converting Authorisation
14	ATKINSON ATKINSON	WILLIAM ELIZABETH ANN	Tenant in Common	1/2 1/2		PROSERPINE ZONE C	RURAL	Nil	5	MEDIUM-A2 PRIORITY	490158

Part 4 Water allocation distributed under the distribution operations licence for the Six Mile Creek Water Supply Board for the purpose of distribution loss and managed under the resource operations licence for the Proserpine River Water Supply Scheme¹⁶

Water Allocation Number	Family Name / Company	Given Names	Tenancy Type	Share of Water Allocation	Tenancy Comments	Location ¹⁷	Purpose	Other Condition	Nominal Volume	Priority
172	SIX MILE CREEK WATER SUPPLY BOARD		Sole Proprietor	1		PROSERPINE ZONE A	DISTRIBUTION LOSS	Nil	300	MEDIUM-A1 PRIORITY

¹⁶ Details correct as of 23 September 2011

¹⁷ The nominal location for a water allocation is the same as the location

Part 5 Water allocation distributed under the distribution operations licence for the Kelsey Creek Water Board for the purpose of distribution loss and managed under the resource operations licence for the Proserpine River Water Supply Scheme¹⁸

Water Allocation Number	Family Name / Company	Given Names	Tenancy Type	Share of Water Allocation	Tenancy Comments	Location ¹⁹	Purpose	Other Condition	Nominal Volume	Priority
173	KELSEY CREEK WATER BOARD		Sole Proprietor	1		PROSERPINE ZONE A	DISTRIBUTION LOSS	Nil	2500	MEDIUM-A1 PRIORITY

¹⁸ Details correct as of 23 September 2011

¹⁹ The nominal location for a water allocation is the same as the location

Attachment 7 Amending and granting of water licences to take unsupplemented water from a watercourse

Part 1 Existing water licences to be amended in subcatchments A, B and C (section 58)²⁰

Licensee	Licence number	Maximum extraction rate (L/s)	Nominal entitlement	Daily volumetric limit (ML)	Purpose	Watercourse
JOHN LAMONT COX; RALPH LAMONT COX	43016L	25	100	1.5	Rural	GOORGANGA CREEK
JOHN DAVID MAU	49335L	25	200	3.9	Rural	GOORGANGA CREEK
CLIVE REGINALD DAVIES; WILLIAM JOHN DAVIES	49429L	25	100	1.5	Rural	GOORGANGA CREEK
JOHN LAMONT COX; RALPH LAMONT COX	55696L	150	50	12.1	Rural	GOORGANGA CREEK
CRAIG KEITH EMMERSON	49310L	95	150	6.9	Rural	GOORGANGA CREEK
JOHN DAVID MAU	30635L	25	95	1.5	Rural	ALBERT CREEK
PAUL JAMES TILLEY	06726L	65	75	3.9	Rural	MYRTLE CREEK
HAVENFORTH PTY LTD AS TRUSTEE and RAYMOND MICHAEL IAN PATULLO	33637L	65	40	3.9	Rural	MYRTLE CREEK
ROBERT JAMES TELFORD; LEISA RACHEL TELFORD	37515L	25	100	1.5	Rural	MYRTLE CREEK
IVAN VINCENT IVANOFF; BRONWYN NEVA IVANOFF	49385L	46	35	3.5	Rural	MYRTLE CREEK

²⁰ Attachment 7, part 1 reflects active licences at the commencement of this plan. The information being presented in this table is for the purposes of informing the client of amendments to their licence. Conditions of a licence not being amended that are not listed in this attachment still apply.

Licensee	Licence number	Maximum extraction rate (L/s)	Nominal entitlement	Daily volumetric limit (ML)	Purpose	Watercourse
PETER MIOTTO; JUDITH JAN MIOTTO	49387L	65	75	3.9	Rural	MYRTLE CREEK
GLEN ALFRED DALTON PATULLO; G & J PATULLO PTY LTD AS TRUSTEE	49441L	65	50	3.9	Rural	MYRTLE CREEK
ANTON MARC DUVAL; TANIA ANN DUVAL	49446L	65	40	3.9	Rural	MYRTLE CREEK
GREGORY JOHN BENNETT; MARK WILLIAM BENNETT	49500L	65	102	3.9	Rural	MYRTLE CREEK
SELWYN LLOYD GERHARDT; LESLEY NOELA GERHARDT	55683L	95	60	6.9	Rural	MYRTLE CREEK
APPOLLONIA LUCCO	29845L	95	315	6.9	Rural	MYRTLE CREEK
OSWALD EDWARD MORANINO; DEBRA MAY MORANINO	29924L	65	200	3.9	Rural	MYRTLE CREEK
GUNNA-GO CARAVAN PARK PTY LTD	100476	8	2	0.6	Any	MYRTLE CREEK
GIOVANNI MARTINO MORETTO, RAIMONDO GIOVANNI MORETTO	13843L	65	120	3.9	Rural	MYRTLE CREEK
HAVENFORTH PTY LTD AS TRUSTEE; RAYMOND MICHAEL IAN PATULLO	37550L	65	30	3.9	Rural	MYRTLE CREEK
ROBERT JAMES BENNETT; MAURA JUNE BENNETT	28284L	25	40	1.5	Rural	MYRTLE CREEK

Licensee	Licence number	Maximum extraction rate (L/s)	Nominal entitlement	Daily volumetric limit (ML)	Purpose	Watercourse
RUSSELL WILLIAM BIGGS	07701L	95	75	6.9	Rural	MYRTLE CREEK
RUSSELL WILLIAM BIGGS	01160L	150	200	12.1	Rural	MYRTLE CREEK
GIOVANNI FALETTI; SANDRA LUIGINA FALETTI	14068L	65	90	3.9	Rural	MYRTLE CREEK
WILLIAM MATTHEWS; VALERIE JOAN MATTHEWS	49423L	65	20	3.9	Rural	BRANDY CREEK
JEFFREY THOMAS RUDDELL; JULIE-ANN MARGARET RUDDELL	55610L	220	295	15.6	Any	BRANDY CREEK
PETER MIOTTO; JUDITH JAN MIOTTO	49484L	25	50	1.5	Rural	BRANDY CREEK
LAWSON RONALD CAMM; SOPHIE LOUISE CAMM	43117WL	65	60	3.9	Rural	BRANDY CREEK
GIOVANNI FALETTI; SANDRA LUIGINA FALETTI	0548755L	65	75	3.9	Rural	MISTAKE GULLY
ENRICO LUIGI MIOTTO; ANNA MIOTTO	32705L	25	30	1.5	Rural	BENDY CREEK
GRAHAM JOHN CHARLES MCDOWALL; RUSSELL STANLEY MCDOWALL	41059L	25	100	1.5	Rural	CROFTON CREEK
PETER MIOTTO; JUDITH JAN MIOTTO	49389L	65	30	3.9	Rural	CROFTON CREEK

Licensee	Licence number	Maximum extraction rate (L/s)	Nominal entitlement	Daily volumetric limit (ML)	Purpose	Watercourse
PROSERPINE AGRICULTURAL PASTORAL AND INDUSTRIAL ASSOCIATION INC	49372L	25	20	1.5	Rural	LAGOON CREEK
KAREN MICHELLE MULLER, REGINALD JAMES MULLER	43178L	65	100	3.9	Rural	MYRTLE CREEK
PROSERPINE PASTORAL COMPANY	103351	95	125	6.9	Rural	REEDY CREEK
GENEVIEVE AMY DRAY; EDWARD JOSEPH DRAY; NOELINE EUNICE DRAY; GEOFFREY CHARLES DRAY; MARGARET DAWN DRAY; MICHAEL JOHN DRAY; INES ELISA DRAY	407963	95	400	6.9	Rural	THOMPSON CREEK
STEVEN PAUL HELVIG; DIANE HELVIG	43184L	5	10	3.9	Rural	MYRTLE CREEK
JOHN HENRY QUOD; PETER ERIC QUOD	49478L	65	50	3.9	Rural	GOOSE LAGOON
PAUL JAMES TILLEY	579030	95	140	6.9	Rural	MYRTLE CREEK
WHITSUNDAY SPRINGS PTY LTD	408209	25	100	1.5	Rural	CROFTON CREEK