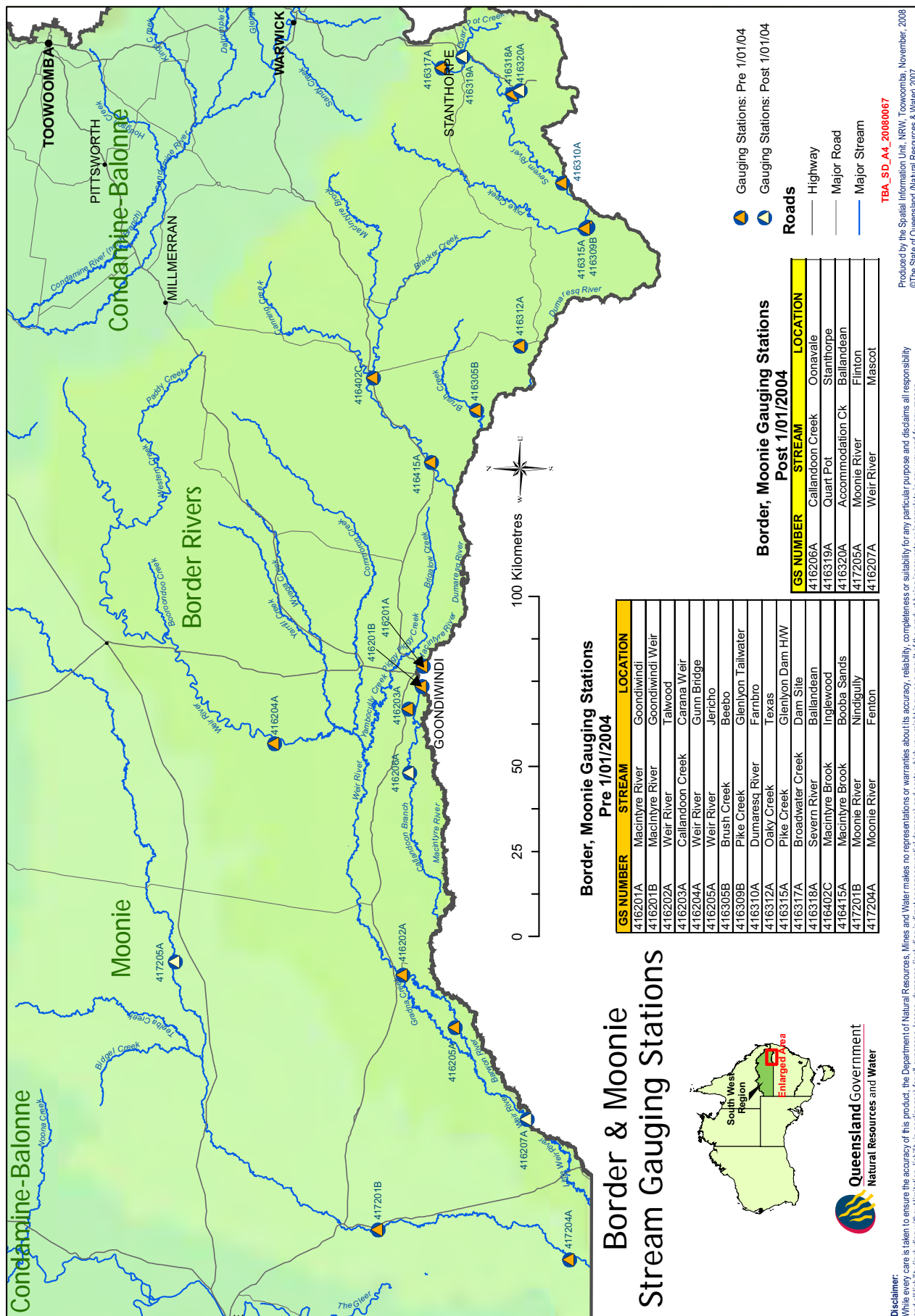
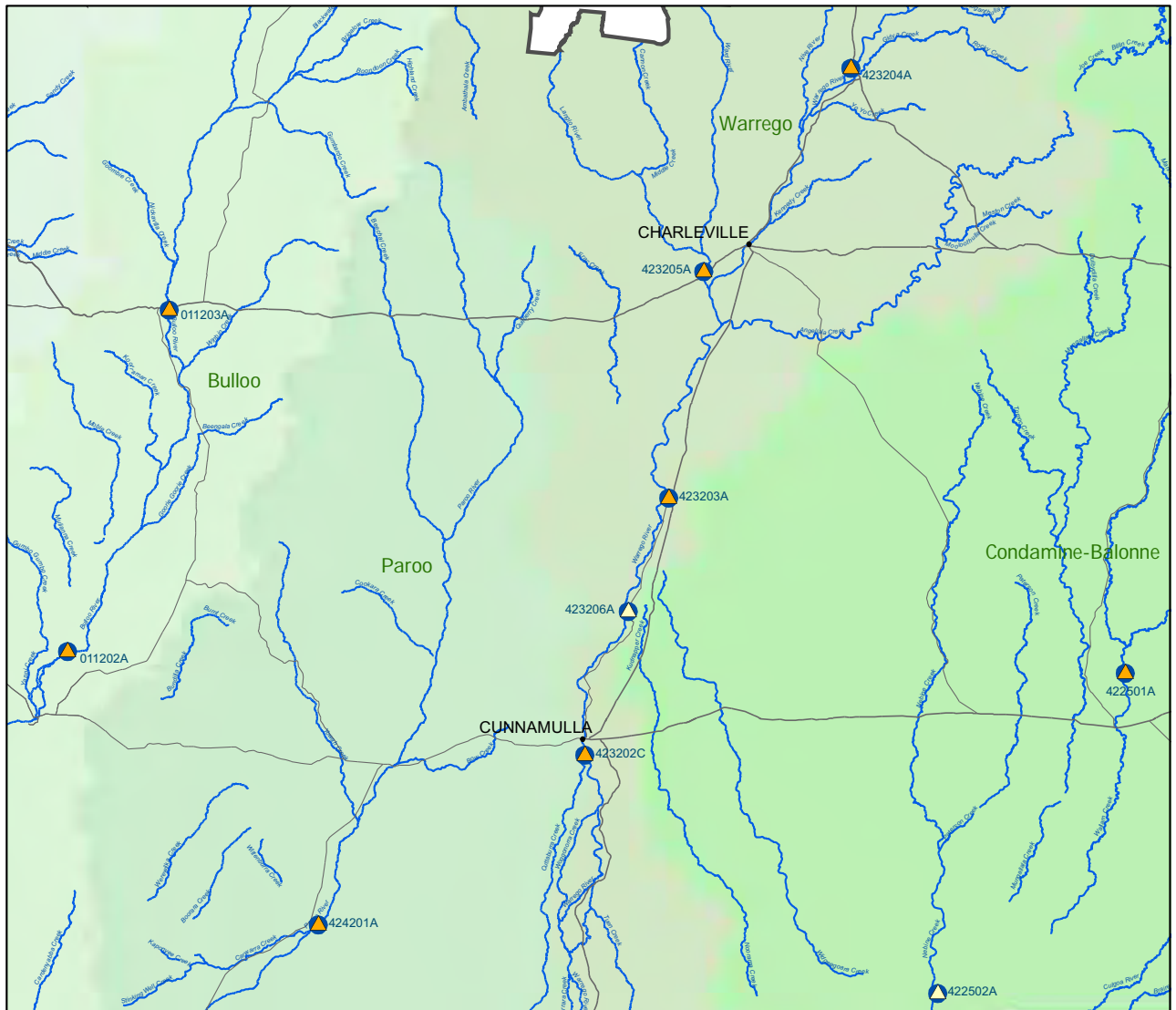


Attachment B—Maps

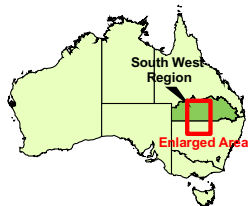
Map 1—Moonie and Border Rivers stream gauging stations



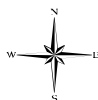
Map 2—WPBN stream gauging stations



Warrego, Paroo, Bulloo & Nebine Stream Gauging Stations



Queensland Government
Natural Resources and Water



0 25 50 100 Kilometres

TBA_SD_A4_20080068

Produced by the Spatial Information Unit, NRW, Toowoomba, November, 2008
©The State of Queensland (Natural Resources & Water) 2007

Disclaimer:

While every care is taken to ensure the accuracy of this product, the Department of Natural Resources, Mines and Water makes no representations or warranties about its accuracy, reliability, completeness or suitability for any particular purpose and disclaims all responsibility and all liability (including without limitation, liability in negligence) for all expenses, losses, damages (including indirect or consequential damage) and costs which you might incur as a result of the product being inaccurate or incomplete in any way and for any reason.

Warrego, Paroo, Bullo & Nebine Gauging Stations

Pre 1/01/2004

GS NUMBER	STREAM	LOCATION
011202A	Bulloo River	Autumnvale
011203A	Bulloo River	Quilpie
422501A	Wallum Creek	Cardiff
423202C	Warrego River	Cunnamulla
423203A	Warrego River	Wyandra
423204A	Warrego River	Augathella
423205A	Ward River	Binowiee
424201A	Paroo River	Caiwarro

Post 1/01/2004

GS NUMBER	STREAM	LOCATION
423206A	Warrego River	Wallen
422502A	Nebine Creek	Roseleigh Crossing

- Gauging Stations: Pre 1/01/04
- Gauging Stations: Post 1/01/04

Roads

- Highway
- Major Road
- Major Stream

19. Glossary

Adopted middle thread distance (AMTD)	The distance in kilometres, measured along the middle of a watercourse, that a specific point in the watercourse is from the watercourse's mouth or junction with the main watercourse.
Aquifer	A body of permeable material or rock, capable of transmitting significant amounts of water, underlain by impermeable material, and through which groundwater flows.
Artesian (water)	Water that occurs naturally in, or is introduced artificially into, an aquifer, which, if trapped by a bore, would flow naturally to the surface (<i>Water Act 2000</i>).
Barrage	A barrier constructed across a watercourse to prevent the inflow of tidal water.
Basin	A river basin, which is the total area from which water drains to a river system or a grouping of adjacent river systems.
Bed and banks	For a watercourse or lake—land over which the water or the watercourse or lake normally flows or that is normally covered by the water, whether permanently or intermittently, but does not include land adjoining or adjacent to the bed or banks that is from time to time covered by floodwater (<i>Water Act 2000</i>).
Catchment	The area, bounded by natural topographic features such as hills and waters from which a drainage system derives its water.
Cease to flow	For a waterhole, means the level at which water stops flowing from a waterhole over its downstream control.
Critical water supply arrangements	For a water supply scheme—a plan for the management of water during periods of critical water shortage when the storage levels in dams, weirs or waterholes are at or below minimum operating levels specified in the resource operations plan.
Cyanobacteria	Also known as blue-green algae. Naturally occurring microscopic, primitive photosynthetic bacteria.
Dead storage	For a dam or weir—the specified minimum volume of water within the ponded area of the storage that cannot be released or used from the storage under normal operating conditions.
Discharge	The rate at which a volume of water passes through a cross-section per unit of time. This could be measured in cubic metres per second (cumecs or m ³ /s) or in megalitres per day (ML/day).
Ecosystem	The sum of everything pertaining to ecology at a location. This includes physical habitats and organisms. Groundwater dependent ecosystems are ecosystems that derive some or all of their water requirements from groundwater.
Ecological outcome	A consequence for an ecosystem in its component parts specified for aquifers, drainage basins, catchments, subcatchments and watercourses (<i>Water Act 2000</i>).
Environmental flow objective	A flow objective for the protection of the health of natural ecosystems for the achievement of ecological outcomes (<i>Water Act 2000</i>). The environmental flow objectives are specified in the water resource plan.

Environmental flow	The overall patterns of flow that remain after a set of rules have been applied to meet the outcomes of a water resource plan, rather than a specific amount of water that is reserved for a river.
Estuarine	Referring to the mouth of the river and the lower part of the river where river flows interact with the oceans tide.
Ground-truthing	The defining of a reference point to base a study on (i.e. remote sensing).
Groundwater	Water found in the cracks, voids, or pore spaces or other spaces between particles of clay, silt, sand, gravel or rock within the saturated zone of a geologic formation. In the saturated zone, all cracks, voids or pore spaces are completely filled with water (not to be confused with soil water, in the unsaturated zone, where voids are filled with both air and water). The upper surface of the saturated zone is called the water table.
Interim resource operations licence (IROL)	A licence granted under s. 175 of the <i>Water Act 2000</i> . The purpose of an IROL is to make provision for how infrastructure and water are managed before the details have been established through an approved resource operations plan.
Macroinvertebrate	An animal without a backbone, which is easily seen by the naked eye. In aquatic ecosystems this generally refers to insect larvae, prawns and worms.
Macrophytes	Aquatic plants that can be seen by the unaided eye
Mean annual flow	The total volume of flow in the simulation period divided by the number of years in the simulation period.
Nominal allocation	The quantity of water apportioned under an existing authorisation for a regulated water supply.
Nominal entitlement	The volume of water, in megalitres, that represents the share of the water that the holder of a water allocation may take under the allocation. However, the volume of water that may be taken in a particular water year or other stated period is decided under the water sharing rules.
Overland flow water	Water, including floodwater, flowing over land, otherwise than in a watercourse or lake after having fallen as rain or in any other way or after rising to the surface naturally from underground (<i>Water Act 2000</i>).
Resource operations licence (ROL)	A licence granted under the <i>Water Act 2000</i> to make provision for how infrastructure and water are managed under an approved resource operations plan. A ROL authorises the holder of the licence to interfere with the flow of the water to the extent necessary to operate the water infrastructure to which the licence applies.
Resource operations plan (ROP)	A statutory plan under the <i>Water Act 2000</i> that details how the objectives identified in a water resource plan are to be achieved. Where necessary a resource operations plan will establish the rules for trading. A resource operations plan will address how water use will be managed, how additional water can be allocated and how water infrastructure is to be managed. A resource operations plan will also specify practices and responsibilities for monitoring water and aquatic ecosystems.
Subartesian (water)	Water that occurs naturally in, or is introduced artificially into, an aquifer, which, if tapped by a bore, would not flow naturally to the surface (<i>Water Act 2000</i>).

Supplemented water	Water supplied under an interim resource operations license, resource operations licence or other authority to operate water infrastructure.
Surface water	water in a watercourse, lake or spring water collected in a weir or dam constructed across a watercourse, lake or spring.
Tailwater	The flow of water immediately downstream of a dam or weir. Tailwater includes all water passing the water storage, for example controlled releases and uncontrolled overflows.
Transfer	Of a resource operations licence, an interim resource operations licence or a water allocation—the passing of the legal or beneficial interest in the licence or allocation.
Unsupplemented water	Water sourced from naturally occurring flows, not impounded or regulated by a structure and supplied by climatic and hydraulic factors alone.
Volume of water allocation	The maximum quantity of water that may be taken in a water year in accordance with the terms and conditions of a water allocation.
Water allocation	An authority to take water granted under ss. 121 or 122 of the <i>Water Act 2000</i> . A water allocation can only be issued under an approved resource operations plan.
Water entitlement	A water allocation, interim water allocation or water licence.
Water harvesting	The taking of unsupplemented water during specified high flow events—generally involves the pumping of water into on-farm storage for later use.
Waterhole	A part of a watercourse that contains water after the watercourse ceases to flow, other than a part of a watercourse that is within the storage area of a dam on the watercourse.
Water quality	A term used to describe the chemical, physical and biological characteristics of water, usually in respect to its suitability for a particular purpose.
Zone	A geographic location defined by a reach of a watercourse. Zones are for defining the location of a water allocation and operational arrangements under the resource operations plan.

20. Abbreviations

AHD	Australian height datum
ANZECC	The Australian and New Zealand Environment Conservation Council
ARMCANZ	Agriculture and Resource Management Council of Australia and New Zealand
BGA	Blue-green algae
CWSA	Critical water supply arrangements
DPI&F	Department of Primary Industries and Fisheries
DOL	Distribution operations licence
EFAP	Environmental Flows Assessment Program
EL	Elevated level
EPA	Environmental Protection Agency
GAB	Great Artesian Basin
GABSI	Great Artesian Basin Sustainability Initiative
GAWB	Gladstone Area Water Board
IROL	Interim resource operations licence
IWA	Interim water allocation
NRW	Department of Natural Resources and Water
OLF	Overland flow
ROL	Resource operations licence
ROP	Resource operations plan
SEAP	Stream and Estuarine Assessment Program
SCL	Stanwell Corporation Ltd
SRA	The Sustainable Rivers Audit Program
TAG	Technical advisory group
WAs	Water allocations
WERD	Water entitlements registration database
WPBN	Warrego, Paroo, Bulloo and Nebine catchments
WRP	Water resource plan