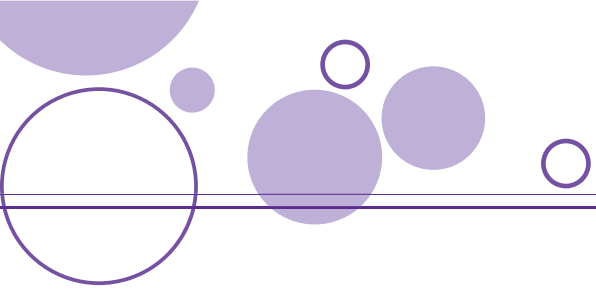


Glossary

<i>aquifer</i>	a layer of porous rock that both stores water and allows water to flow through it
<i>artesian basin</i>	a naturally formed underground geological structure containing water under pressure
<i>catchment</i>	an area of land bounded by natural features, such as hills, from which all water run-off flows to a common point—a creek, lake, river or bay
<i>coolamon</i>	a wooden dish with curved sides, generally made from light wood; used by Indigenous Australians for carrying water, babies or small objects
<i>ecosystem</i>	a complex system of plant, animal and micro-organism communities and their non-living environment
<i>environment</i>	the air, water, land, natural resources, flora, fauna and humans in a particular location
<i>gigalitre (GL)</i>	measurement of volume equal to 1000 megalitres (ML)
<i>greywater</i>	domestic wastewater from bath, basin, kitchen, laundry and shower, but not water flushed down the toilet
<i>groundwater</i>	all subsurface water, generally held in the pores and crevices of rocks and soil
<i>megalitre (ML)</i>	measurement of volume equal to one million litres—approximate volume of water in three lanes of an Olympic swimming pool, which contains 2.5 ML
<i>nutrient</i>	plant food found in water—usually nitrogen and phosphorus
<i>pathogen</i>	an organism (bacteria, protozoan, virus) that causes disease
<i>purified recycled water (PRW)</i>	wastewater that has been treated to the highest standard through a multi-barrier treatment system
<i>recycled water</i>	treated wastewater intended for further use
<i>reclamation</i>	the process of deriving useable materials from waste products
<i>reticulation</i>	the network of pipes leading from the water treatment plant to the consumer
<i>retrofitting</i>	adding or replacing items on existing buildings
<i>salinity</i>	salts dissolved in water
<i>sewage</i>	water containing faeces and urine, and household and commercial wastewater that contains human wastes
<i>sewerage</i>	the system of pipes, plant and equipment needed to transport, treat and dispose of sewage
<i>solar energy</i>	radiant energy from the sun—that is, light and heat
<i>stormwater</i>	precipitation (almost always in the form of rain) that flows over all urban surfaces such as roofs, pavements, roads, car parks, gardens and open spaces



- sustainable** having the capacity to continue indefinitely; refers to ‘environmentally friendly’ activities that are designed to avoid adverse effects on the natural environment and do not deplete natural resources
- turbidity** the cloudiness of water caused by the presence of suspended matter
- wastewater** water that has been used for specific purposes and is no longer required or suitable for those purposes
- water cycle** water movement from the atmosphere to the earth and back to the atmosphere –precipitation, run-off, storage, transpiration and evaporation. The term is extended to include the interactions of social, environmental and economic aspects, and consideration of water services and water resource management
- waterway** any part of a river, creek, stream, gully or drainage channel, including the bed and the banks

This document often quotes volumes in terms of familiar objects such as Olympic swimming pools, wheelie bins and buckets, so that readers may form a visual image of the quantities involved. Values for these comparisons are set out below, with references.

Aspect	Amount	Reference/comments
Volume of an Olympic swimming pool	2 500 000 L	Fédération Internationale de Natation, 2007
Volume of a typical backyard rainwater tank	5 000 L	Based on the size required for new houses under Queensland building regulations
Volume of a wheelie bin	240 L	Brisbane City Council, 2007
Volume of a typical bucket	9 L	Based on the original 2-gallon size that has been in common use for decades
Flow rate from a typical garden tap	15–18 L/min	Australian Government, 2006, p. 190
Population of Queensland (2006)	4 million	Planning Information and Forecast Unit, 2005
Average household size in Queensland (2001)	2.6 persons	Planning Information and Forecast Unit, 2005
Population of South East Queensland (2006)	2.8 million	Planning Information and Forecast Unit, 2005
Water used while brushing teeth Note: Dentists recommend brushing for 2–3 minutes	Approximately 10 L per brushing if the tap is left running.	Children’s University, 2007 Assuming 3 minutes of brushing and an average flow rate of 3.3 L per minute (Roberts, 2005, p. 48)