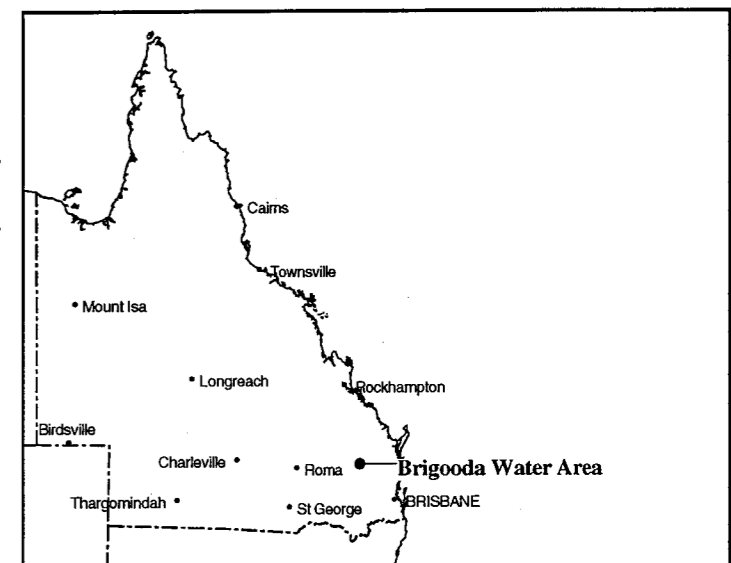
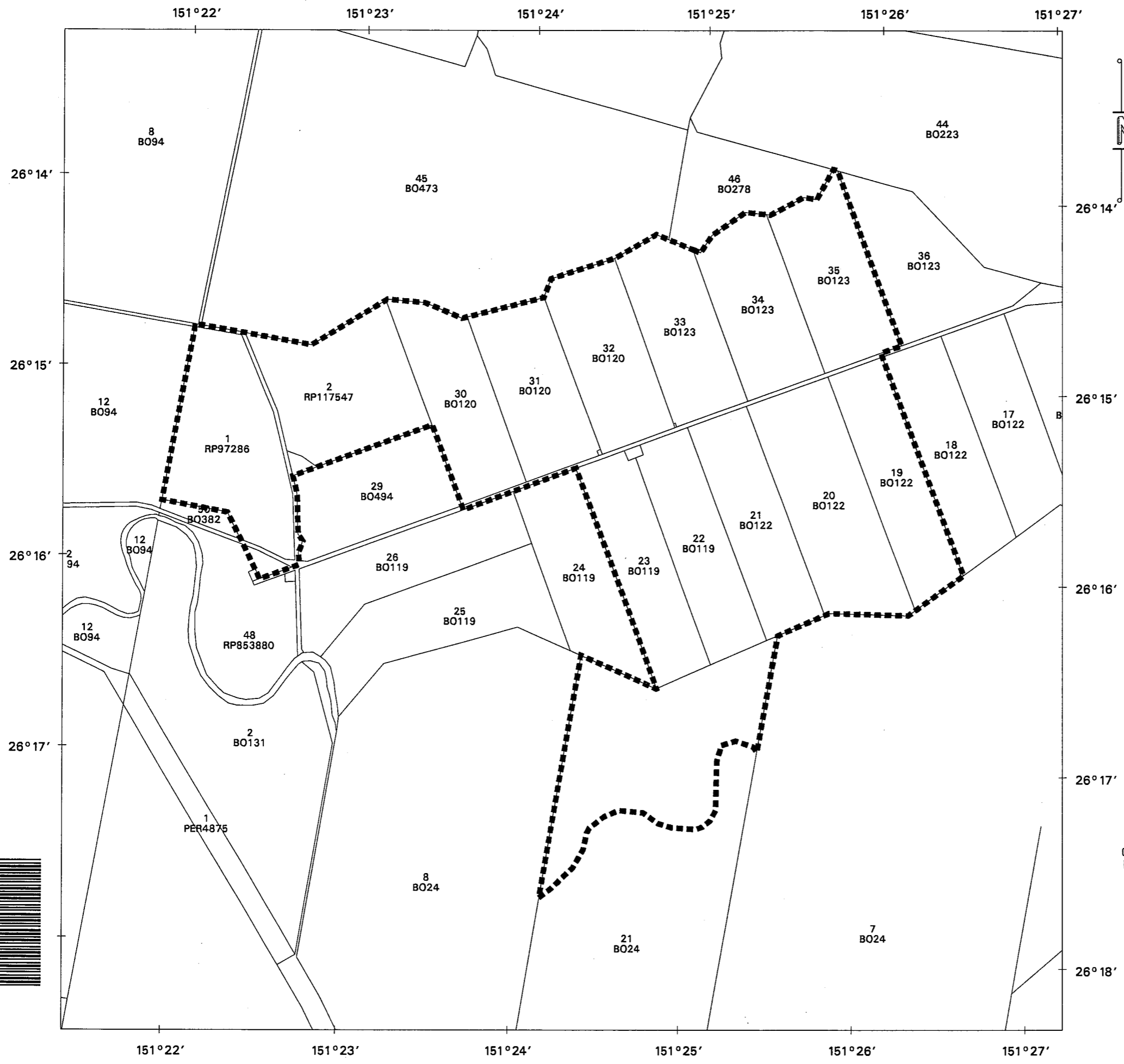


Disclaimer: While every care is taken to ensure the accuracy of this product, the Department of Natural Resources makes no representations or warranties about its accuracy, reliability, completeness or suitability for any particular purpose and disclaims all responsibility and all liability (including without limitation, liability in negligence) for all expenses, losses, damages (including indirect or consequential damage) and costs which you might incur as a result of the product being inaccurate or incomplete in any way and for any reason.

Printed: July 31, 2000 Current Workspace: /projects/163934
 © The State of Queensland (Department of Natural Resources) (2000)

Produced at the Natural Sciences Precinct
 by Natural Resources Information Management,
 RSK, Department of Natural Resources.

AP4018



Location Map

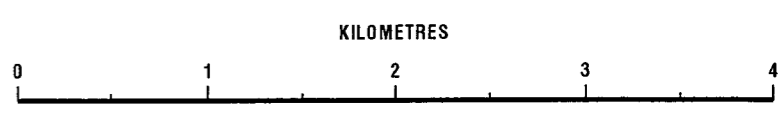
LEGEND

■■■■■■ Boundary of Water Area
 Projection: Simple Conic
 (Standard Parallels 14° S and 26° S, Central Meridian 146° E)
 Datum: Australian Geodetic Datum 1984

The cadastral information plotted on this map is extracted from the Digital Cadastre Data Base supplied by the Department of Natural Resources.

For information regarding the obligations of landholders and the operation of water services within this Area contact the Department of Natural Resources.

Local Government Wondai
 Date of Preparation 31 July 2000



 **Queensland Government**
 Department of Natural Resources

**BRIGOODA
 WATER AREA
 BOUNDARY PLAN**