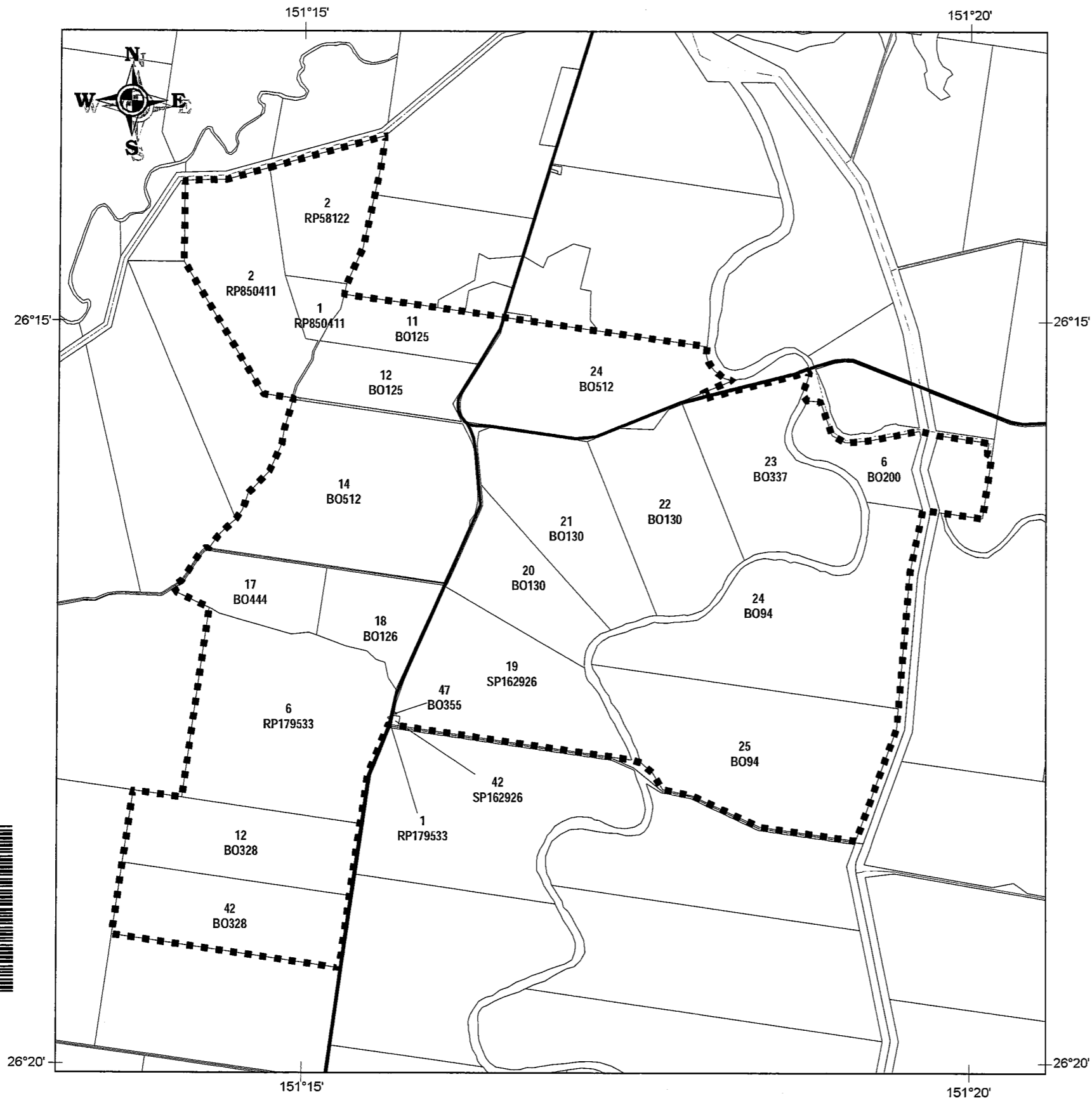


Disclaimer: While every care is taken to ensure the accuracy of this product, the Department of Natural Resources and Water makes no representations or warranties about its accuracy, reliability, completeness or suitability for any particular purpose and disclaims all liability (including without limitation, liability in negligence) for all expenses, losses, damages (including indirect or consequential damage) and costs which you might incur as a result of

© The State of Queensland (Department of Natural Resources and Water) (2006)

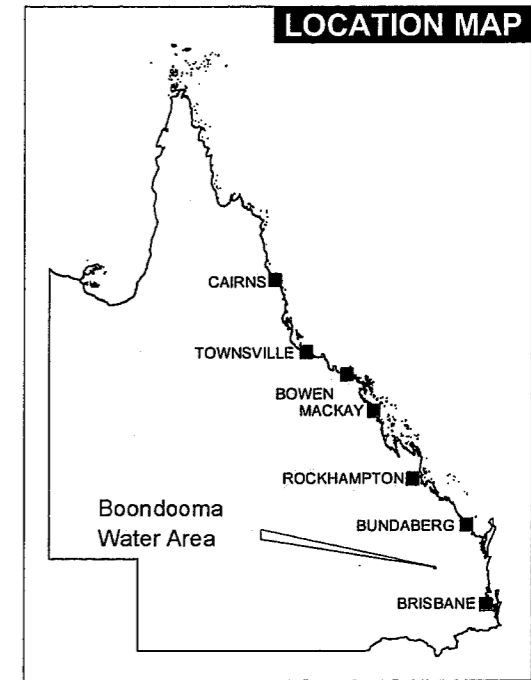
Prepared by Water Industry Regulation  
Department of Natural Resources and Water



AP 16173



PLAN OF AREA



LEGEND

Boundary of Water Area

Projection: GDA 94

Local Government  
Date of Approval

Wondai  
18 May 2007

The cadastral information on this map is extracted from Digital Cadastre Data Base supplied by the Department of Natural Resources and Water.

For information regarding the obligations of landholders and operation of water services within this Area, contact the Department of Natural Resources and Water.



**BOONDOOMA  
WATER AREA  
AREA PLAN**