

Land cover change in the Terrain Natural Resource Management region

2008-09

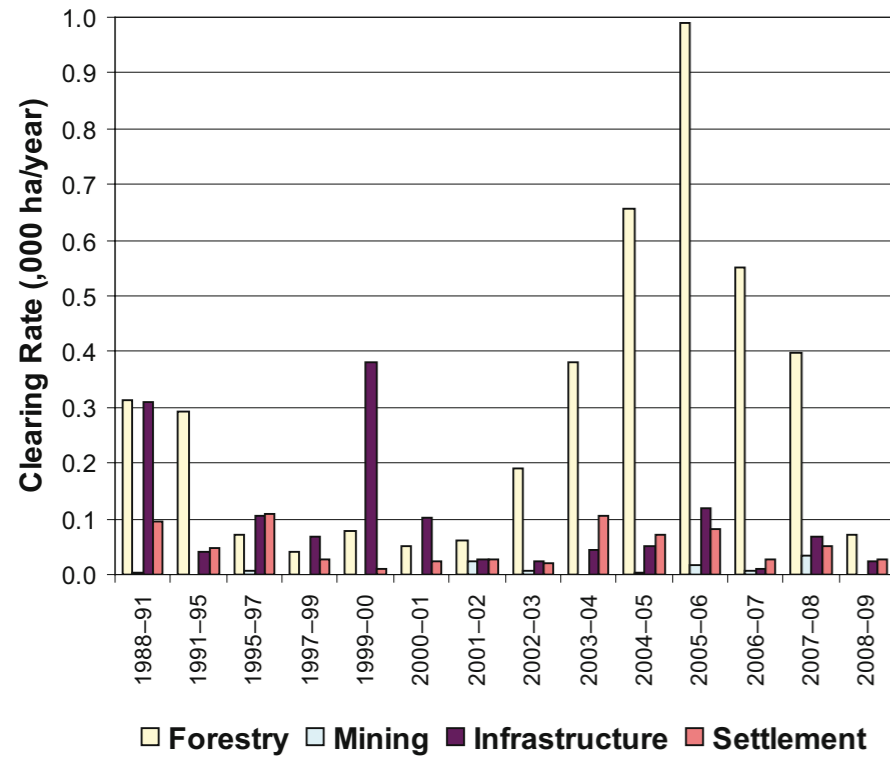
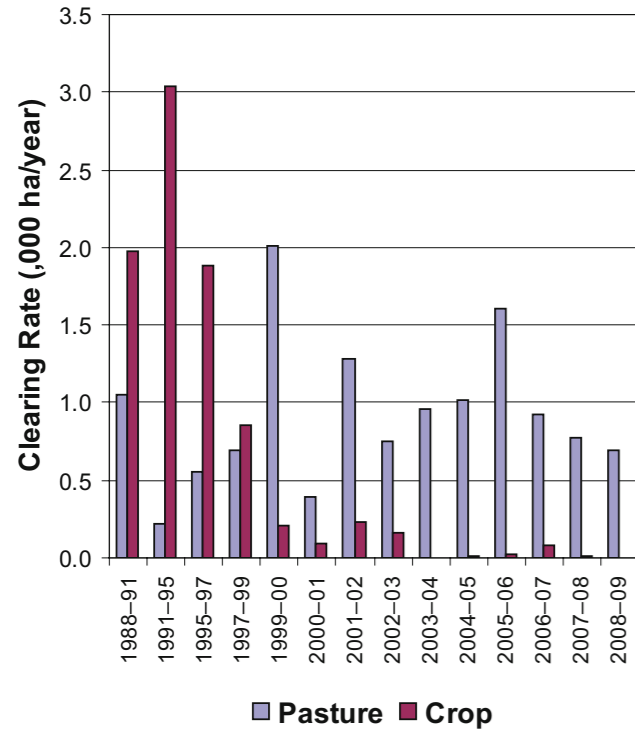


Figure 4. Woody vegetation clearing rates in the Terrain NRM region by replacement land cover.

This fact sheet is 13 of 13 in a series detailing land cover change in Queensland's Natural Resource Management Regions. These fact sheets are addenda to the report: Department of Environment and Resource Management (2010). *Land cover change in Queensland 2008-09: a Statewide Landcover and Trees Study (SLATS) Report, Oct 2010*. Department of Environment and Resource Management, Brisbane.

Please refer to this report for further background, methods and explanatory notes.

The Queensland Government supports and encourages the dissemination and exchange of information. However, copyright protects this document. The State of Queensland has no objection to this material being reproduced, made available online or electronically, provided it is for your personal, non-commercial use, or use within your organisation; the material remains unaltered; and the State of Queensland is recognised as the owner.

© The State of Queensland 2010.

For further information:
 Statewide Landcover and Trees Study
 41 Boggo Road
 Dutton Park QLD 4102
 Phone: 61 7 3170 5686
 Email: productdelivery@derm.qld.gov.au

www.derm.qld.gov.au

#29552

Summary

In 2008-09, the woody vegetation clearing rate for the Terrain region was 810 hectares per year (ha/year), representing a reduction of 39% from the previous era.

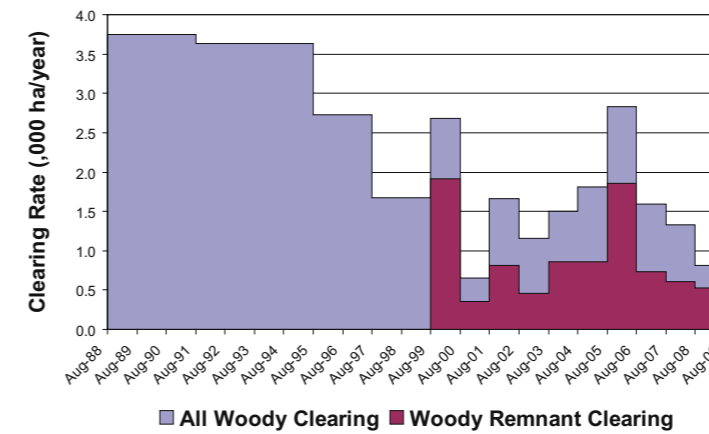


Figure 1. Woody vegetation clearing rates in the Terrain NRM region.

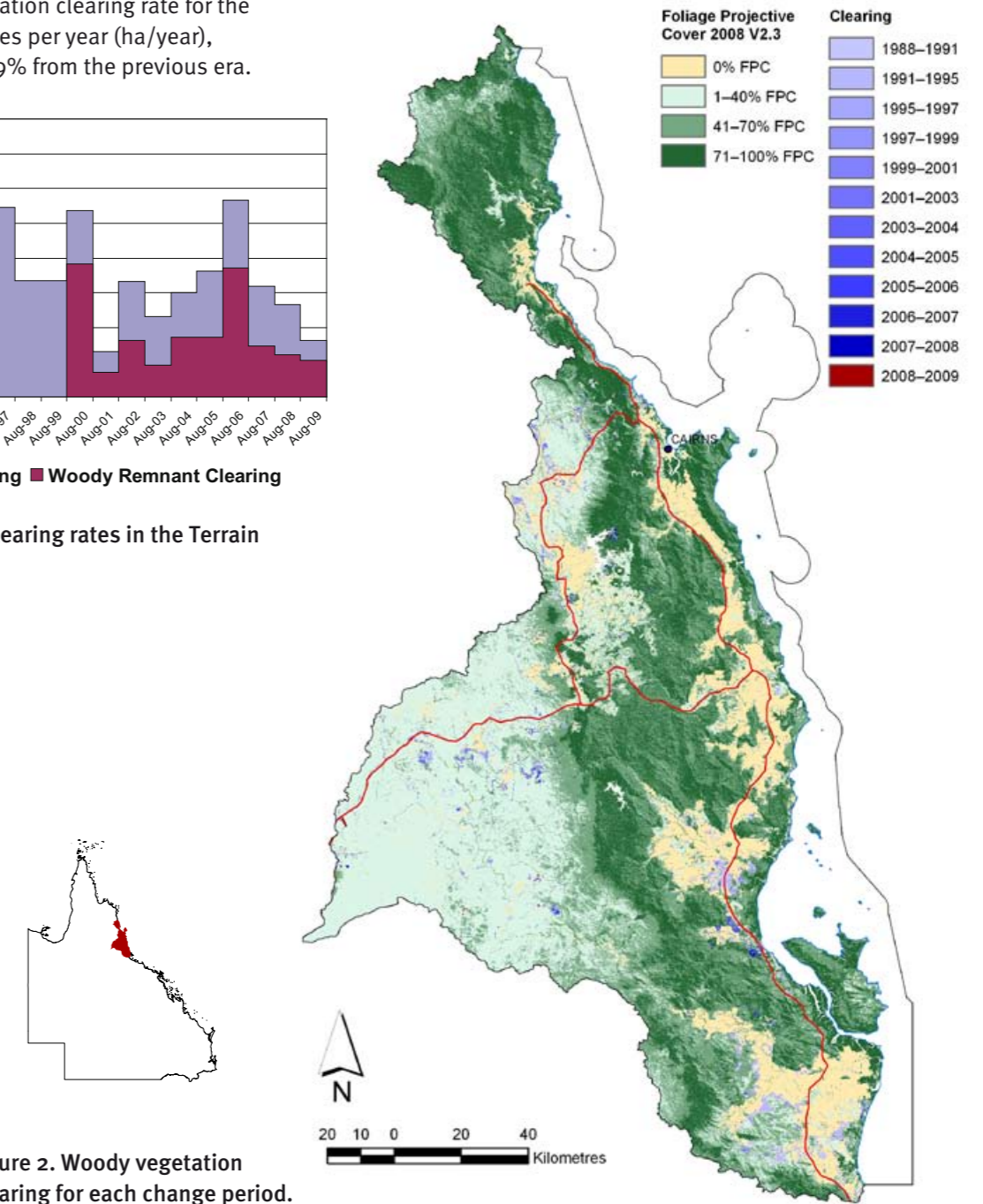


Figure 2. Woody vegetation clearing for each change period.

Woody vegetation clearing by remnant status

Table 1. Remnant and non-remnant woody clearing rates in the Terrain NRM region.

Period	Woody vegetation clearing rate (,000ha/yr) of			Period	Woody vegetation clearing rate (,000ha/yr) of		
	Non-remnant woody	Remnant woody*	Total woody		Non-remnant woody	Remnant woody*	Total woody
1999-00	0.776	1.911	2.687	2004-05	0.943	0.863	1.806
2000-01	0.306	0.351	0.657	2005-06	0.976	1.858	2.834
2001-02	0.845	0.814	1.659	2006-07	0.858	0.733	1.591
2002-03	0.691	0.464	1.155	2007-08	0.720	0.608	1.328
2003-04	0.633	0.862	1.496	2008-09	0.288	0.522	0.810

* Regional ecosystem remnant mapping prior to 1999 not used in this analysis.

Woody vegetation clearing by tenure

Table 2. Woody vegetation clearing rates in the Terrain NRM region by tenure.

Period	Woody vegetation clearing rate (,000ha/yr) on					Total
	Freehold	Leasehold	Reserves	Other tenures		
1988-91	2.533	0.711	0.469	0.021		3.733
1991-95	2.712	0.613	0.291	0.005		3.620
1995-97	2.234	0.396	0.082	0.006		2.719
1997-99	1.156	0.451	0.059	0.008		1.675
1999-00	1.966	0.585	0.136	0.000		2.687
2000-01	0.476	0.119	0.061	0.001		0.657
2001-02	0.889	0.662	0.107	0.000		1.659
2002-03	0.606	0.336	0.208	0.004		1.155
2003-04	0.965	0.154	0.377	0.000		1.496
2004-05	0.935	0.385	0.486	0.000		1.806
2005-06	0.938	1.328	0.561	0.007		2.834
2006-07	0.837	0.192	0.561	0.001		1.591
2007-08	0.508	0.427	0.393	0.000		1.328
2008-09	0.486	0.243	0.080	0.000		0.810

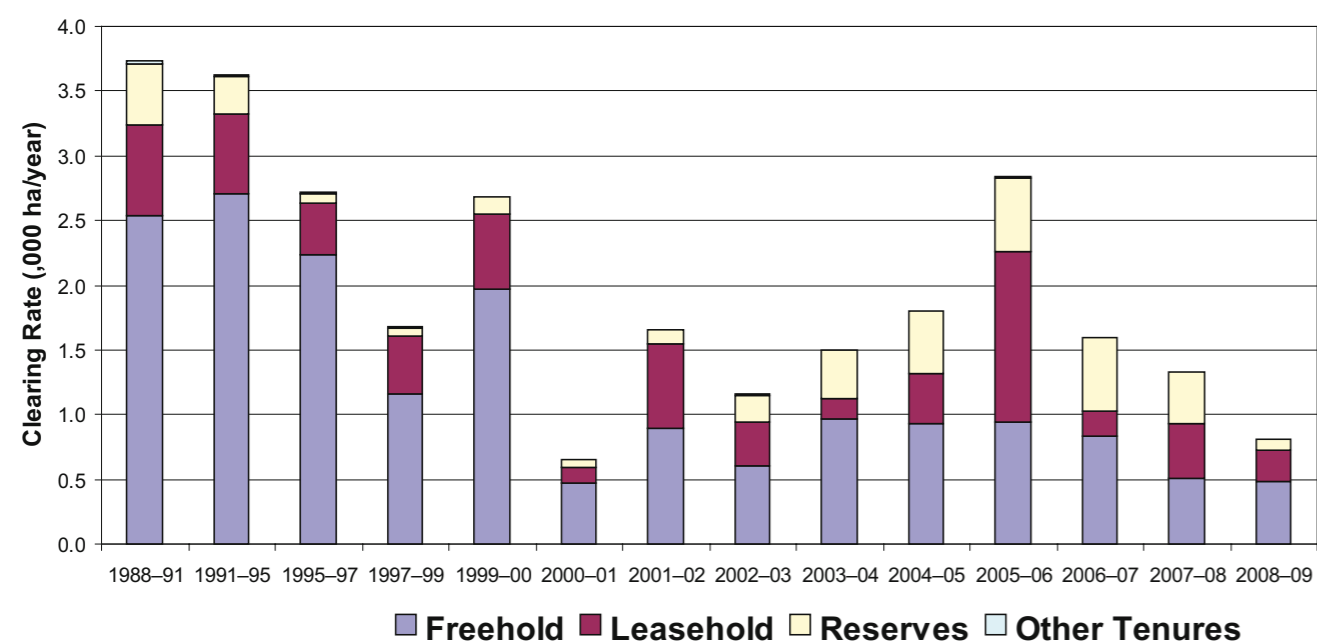


Figure 3. Woody vegetation clearing rates in the Terrain NRM region by tenure.

Land cover change in the Terrain NRM region

Woody vegetation clearing by subcatchment

Table 3. Woody vegetation clearing rates in the Terrain NRM region by subcatchment #.

Period	Woody vegetation clearing rate (,000ha/yr) for					
	Barron River	Daintree River	Endeavour River	Herbert River	Mossman River	Mulgrave River
2006-07	0.209	0.000	0.001	1.041	0.037	0.030
2007-08	0.242	0.001	0.000	0.695	0.011	0.026
2008-09	0.145	0.014	0.006	0.502	0.021	0.009

Table 3.continued

Period	Woody vegetation clearing rate (,000ha/yr) for					
	Murray River	North Johnstone River	Russell River	South Johnstone River	Tully River	Total
2006-07	0.223	0.003	0.024	0.012	0.010	1.591
2007-08	0.273	0.024	0.006	0.008	0.041	1.328
2008-09	0.047	0.023	0.020	0.008	0.016	0.810

Please refer to Figure 27 of the main report (DERM, 2010) for the location of each subcatchment.

Remaining woody vegetation

Table 4. Remaining Woody Vegetation in the Terrain NRM region by subcatchment.

	Barron River	Daintree River	Endeavour River	Herbert River	Hinchinbrook Island	Mossman River
Catchment area (,000 ha)	219	210	8	984	39	47
Area woody 2008 V2.3 (,000 ha)	175	204	8	867	38	41
% of catchment woody in 2008	80	97	97	88	98	87

Table 4. continued

	Mulgrave River	Murray River	North Johnstone River	Russell River	South Johnstone River	Tully River	Total
Catchment area (,000 ha)	131	111	103	67	129	168	2221
Area woody 2008 V2.3 (,000 ha)	109	88	85	53	91	136	1899
% of catchment woody in 2008	83	79	83	79	70	81	86

Woody vegetation clearing by replacement land cover

Table 5. Woody vegetation clearing rates in the Terrain NRM region by replacement land cover.

Period	Woody vegetation clearing rate (,000ha/yr) for						
	Pasture	Crop	Forestry	Mining	Infrastructure	Settlement	Total*
1988-91	1.050	1.973	0.313	0.003	0.310	0.097	3.746
1991-95	0.221	3.036	0.294	0.000	0.040	0.048	3.638
1995-97	0.552	1.885	0.073	0.006	0.105	0.108	2.728
1997-99	0.689	0.852	0.042	0.000	0.069	0.027	1.679
1999-00	2.006	0.210	0.078	0.000	0.381	0.012	2.687
2000-01	0.392	0.089	0.051	0.000	0.103	0.024	0.657
2001-02	1.286	0.236	0.060	0.023	0.027	0.026	1.659
2002-03	0.750	0.165	0.191	0.006	0.023	0.020	1.155
2003-04	0.961	0.002	0.381	0.001	0.044	0.106	1.496
2004-05	1.011	0.012	0.655	0.004	0.052	0.072	1.806
2005-06	1.611	0.018	0.990	0.015	0.118	0.081	2.834
2006-07	0.920	0.079	0.550	0.007	0.009	0.026	1.591
2007-08	0.771	0.008	0.398	0.033	0.069	0.050	1.328
2008-09	0.688	0.000	0.070	0.001	0.025	0.026	0.810

* total excludes natural tree death