

# Land cover change in the South West Natural Resource Management region

2008-09

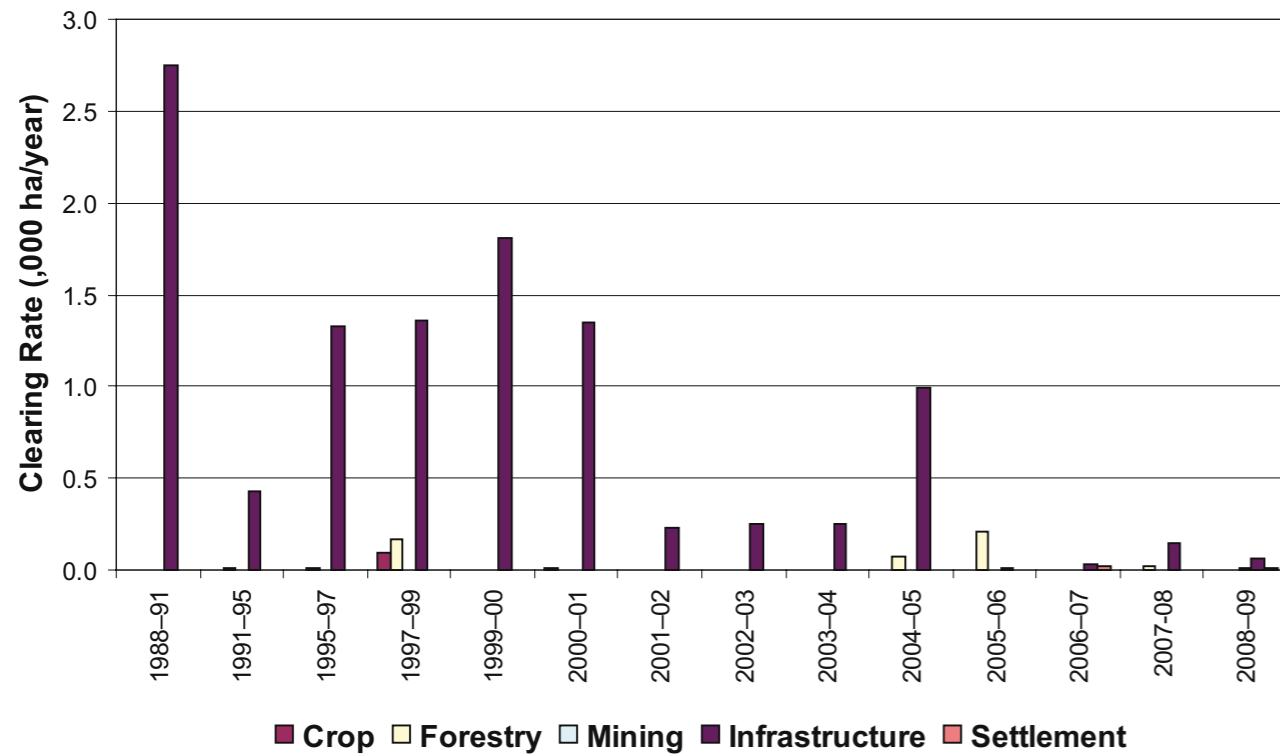
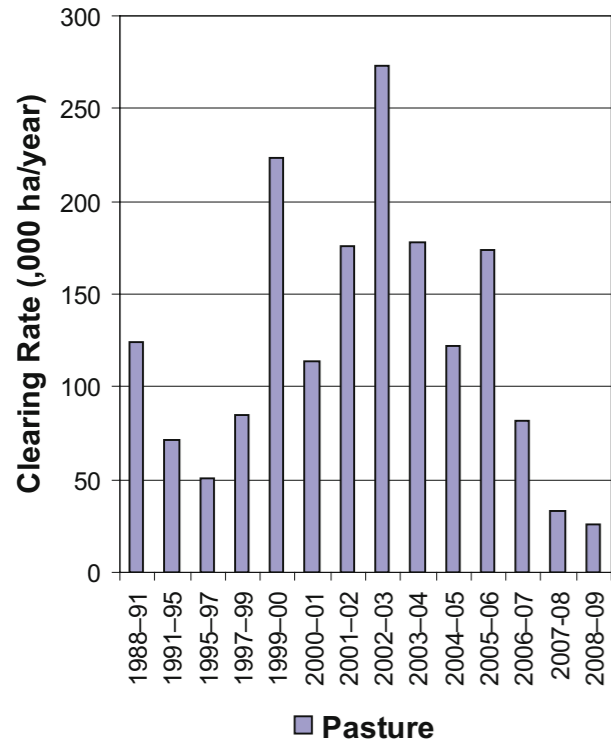


Figure 4. Woody vegetation clearing rates in the South West NRM region by replacement land cover.

This fact sheet is 11 of 13 in a series detailing land cover change in Queensland's Natural Resource Management Regions. These fact sheets are addenda to the report: Department of Environment and Resource Management (2010). *Land cover change in Queensland 2008-09: a Statewide Landcover and Trees Study (SLATS) Report, Oct 2010*. Department of Environment and Resource Management, Brisbane.

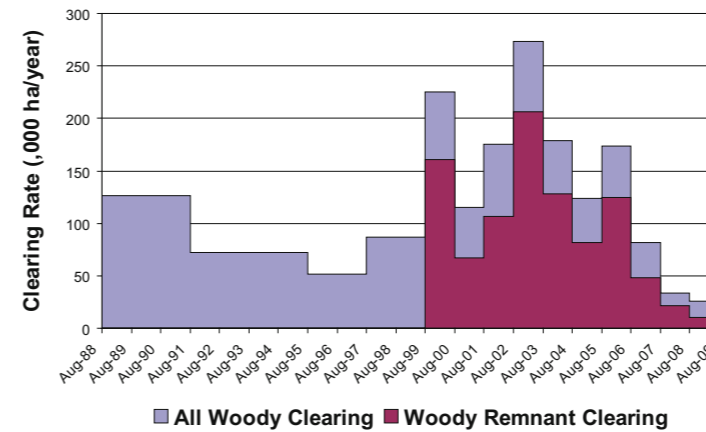
Please refer to this report for further background, methods and explanatory notes.

The Queensland Government supports and encourages the dissemination and exchange of information. However, copyright protects this document. The State of Queensland has no objection to this material being reproduced, made available online or electronically, provided it is for your personal, non-commercial use, or use within your organisation; the material remains unaltered; and the State of Queensland is recognised as the owner.

© The State of Queensland 2010.

For further information:  
 Statewide Landcover and Trees Study  
 41 Boggo Road  
 Dutton Park QLD 4102  
 Phone: 61 7 3170 5686  
 Email: productdelivery@derm.qld.gov.au

[www.derm.qld.gov.au](http://www.derm.qld.gov.au)



## Summary

In 2008-09, the woody vegetation clearing rate in the South West region decreased by 23% from the previous era, to 25 596 hectares per year (ha/year). This is the lowest measured rate in the region since satellite monitoring began, and represents a 91% decrease since the peak figure recorded in the 2002-03 era.

The 2008-09 period represents the first time since 1999-2000 that remnant woody vegetation clearing is less than non-remnant woody vegetation clearing.

Figure 1. Woody vegetation clearing rates in the South West NRM region.

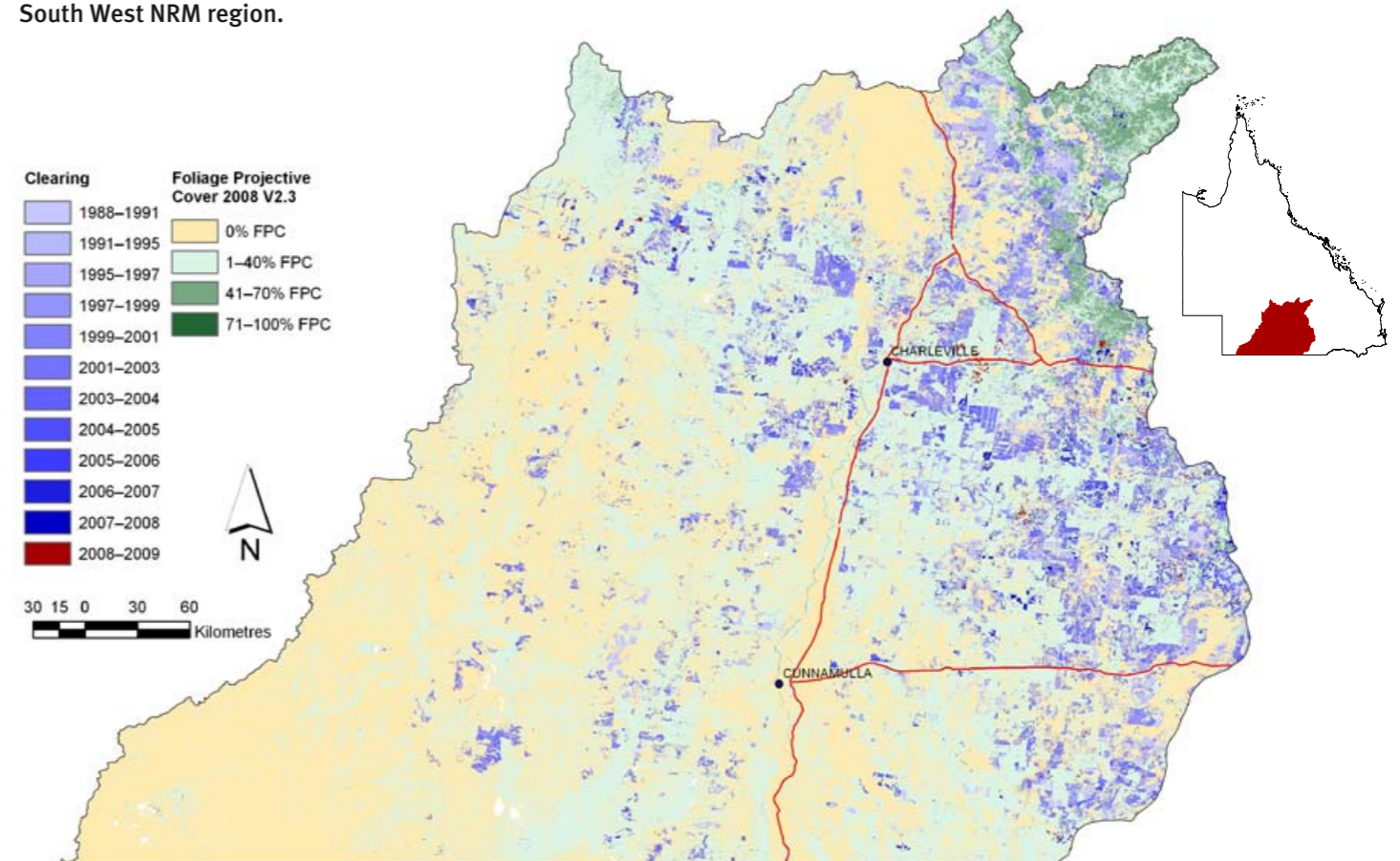


Figure 2. Woody vegetation clearing for each change period.

## Woody vegetation clearing by remnant status

Table 1. Remnant and non-remnant woody clearing rates in the South West NRM region.

Period	Woody vegetation clearing rate (,oooha/yr) of			Period	Woody vegetation clearing rate (,oooha/yr) of		
	Non-remnant woody	Remnant woody*	Total woody		Non-remnant woody	Remnant woody*	Total woody
1999-00	64.370	160.985	225.355	2004-05	41.882	81.498	123.380
2000-01	48.437	67.029	115.466	2005-06	49.266	124.452	173.718
2001-02	68.954	106.747	175.702	2006-07	34.120	47.827	81.948
2002-03	66.775	206.207	272.982	2007-08	11.921	21.364	33.286
2003-04	50.715	127.893	178.608	2008-09	15.127	10.469	25.596

\* Regional ecosystem remnant mapping prior to 1999 not used in this analysis.

## Woody vegetation clearing by tenure

Table 2. Woody vegetation clearing rates in the South West NRM region by tenure.

Period	Woody vegetation clearing rate (,oooha/yr) on				
	Freehold	Leasehold	Reserves	Other tenures	Total
1988-91	50.519	73.691	0.276	1.888	126.374
1991-95	27.428	43.821	0.128	0.790	72.166
1995-97	26.101	23.985	0.068	1.425	51.578
1997-99	41.337	43.989	0.281	1.296	86.902
1999-00	142.170	83.024	0.161	0.000	225.355
2000-01	60.054	55.399	0.012	0.000	115.465
2001-02	79.841	95.501	0.359	0.000	175.702
2002-03	146.555	126.391	0.018	0.000	272.963
2003-04	95.407	83.057	0.145	0.000	178.609
2004-05	58.102	65.192	0.086	0.000	123.380
2004-05	83.653	89.925	0.139	0.000	173.718
2006-07	37.013	44.884	0.051	0.000	81.948
2007-08	14.783	18.478	0.024	0.001	33.286
2008-09	11.480	14.097	0.019	0.000	25.596

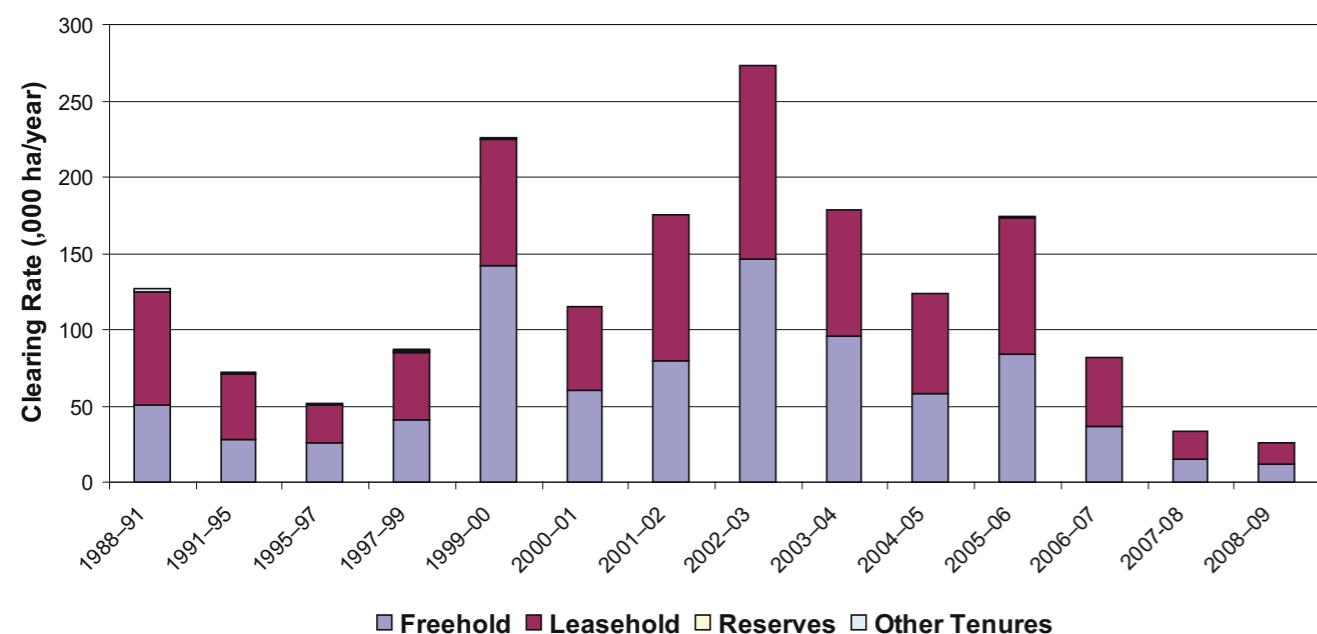


Figure 3. Woody vegetation clearing rates in the South West NRM region by tenure.

## Woody vegetation clearing by subcatchment

Table 3. Woody vegetation clearing rates in the South West NRM region by subcatchment #.

Period	Woody vegetation clearing rate (,oooha/yr) for				
	Bulloo River	Paroo River	Wallam Creeks	Warrego River	Total
2006-07	5.009	6.078	39.368	31.493	81.948
2007-08	1.574	1.005	22.216	8.491	33.286
2008-09	2.182	0.295	10.799	12.320	25.596

# Please refer to Figure 27 of the main report (DERM, 2010) for the location of each subcatchment.

## Remaining woody vegetation

Table 4. Remaining woody vegetation in the South West NRM region by subcatchment.

	Bulloo River	Paroo River	Wallam Creeks	Warrego River	Total
Catchment area (,000 ha)	5185	3654	4704	5169	18711
Area woody 2008 V2.3 (,000 ha)	1638	1850	2737	2970	9193
% of catchment woody in 2008	32	51	58	57	49

## Woody vegetation clearing by replacement land cover

Table 5. Woody vegetation clearing rates in the South West NRM region by replacement land cover.

Period	Woody vegetation clearing rate (,oooha/yr) for						
	Pasture	Crop	Forestry	Mining	Infrastructure	Settlement	Total*
1988-91	123.635	0.000	0.000	0.000	2.749	0.001	126.385
1991-95	71.740	0.000	0.015	0.001	0.432	0.000	72.188
1995-97	50.252	0.000	0.015	0.000	1.323	0.000	51.590
1997-99	85.278	0.095	0.165	0.000	1.362	0.003	86.904
1999-00	223.540	0.000	0.004	0.000	1.810	0.002	225.355
2000-01	114.103	0.011	0.000	0.000	1.352	0.000	115.466
2001-02	175.467	0.000	0.000	0.000	0.235	0.000	175.702
2002-03	272.735	0.000	0.000	0.000	0.247	0.000	272.982
2003-04	178.354	0.000	0.000	0.000	0.254	0.000	178.608
2004-05	122.309	0.000	0.074	0.000	0.997	0.001	123.380
2005-06	173.497	0.000	0.212	0.000	0.009	0.000	173.718
2006-07	81.891	0.000	0.000	0.000	0.034	0.022	81.948
2007-08	33.119	0.000	0.023	0.000	0.144	0.000	33.286
2008-09	25.510	0.000	0.000	0.009	0.064	0.012	25.596

\* total excludes natural tree death