

Figure 4. Woody vegetation clearing rates in the Southern Gulf Catchments NRM region by replacement land cover.

This fact sheet is 12 of 13 in a series detailing land cover change in Queensland's Natural Resource Management Regions. These fact sheets are addenda to the report: Department of Environment and Resource Management (2010). *Land cover change in Queensland 2008-09: a Statewide Landcover and Trees Study (SLATS) Report, Oct 2010*. Department of Environment and Resource Management, Brisbane.

Please refer to this report for further background, methods and explanatory notes.

The Queensland Government supports and encourages the dissemination and exchange of information. However, copyright protects this document. The State of Queensland has no objection to this material being reproduced, made available online or electronically, provided it is for your personal, non-commercial use, or use within your organisation; the material remains unaltered; and the State of Queensland is recognised as the owner.

© The State of Queensland 2010.

For further information:  
 Statewide Landcover and Trees Study  
 41 Boggo Road  
 Dutton Park QLD 4102  
 Phone: 61 7 3170 5686  
 Email: productdelivery@derm.qld.gov.au

[www.derm.qld.gov.au](http://www.derm.qld.gov.au)

#29552

## Land cover change in the Southern Gulf Catchments Natural Resource Management region

2008-09

### Summary

In 2008-09, the woody vegetation clearing rate for the Southern Gulf region has shown a further reduction. The woody vegetation clearing rate decreased by 51% to 268 hectares per year (ha/year), which is the lowest measured rate since satellite monitoring began.

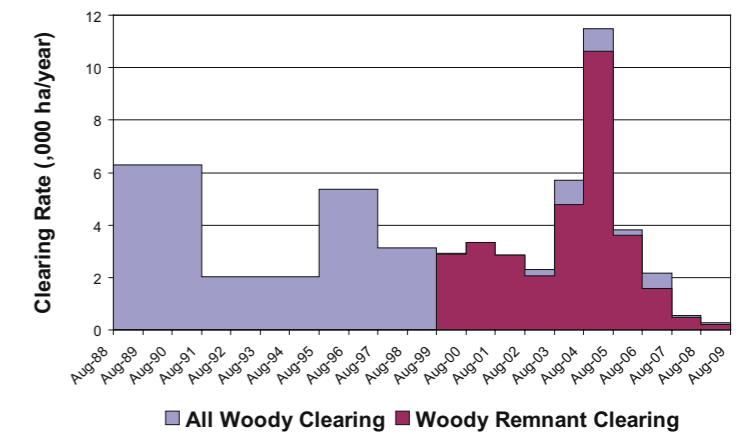


Figure 1. Woody vegetation clearing rates in the Southern Gulf Catchments NRM region.

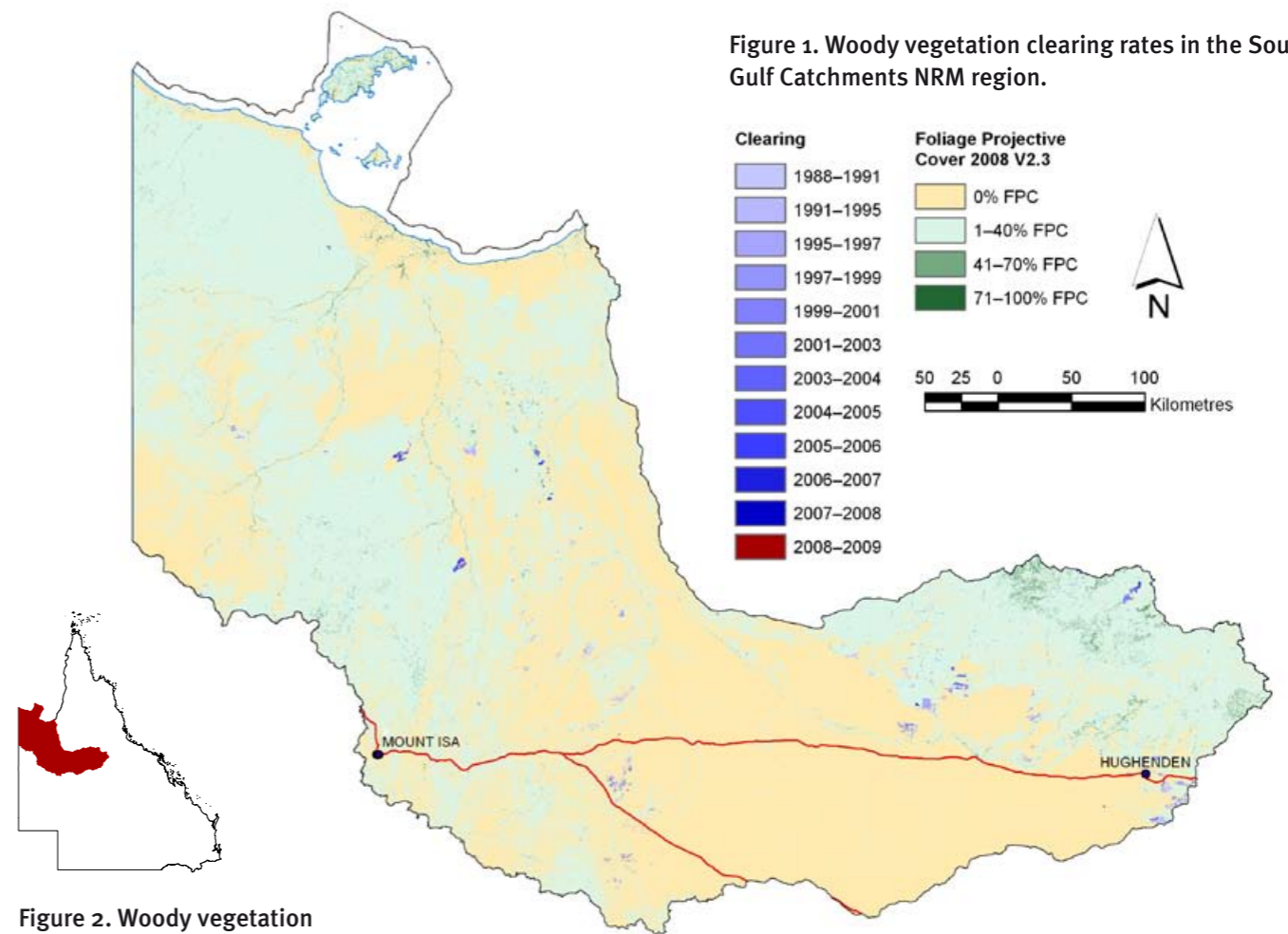


Figure 2. Woody vegetation clearing in each change period.

## Woody vegetation clearing by remnant status

Table 1. Remnant and non-remnant woody clearing rates in the Southern Gulf Catchments NRM region.

Period	Woody vegetation clearing rate (,000ha/yr) of			Period	Woody vegetation clearing rate (,000ha/yr) of		
	Non-remnant woody	Remnant woody*	Total woody		Non-remnant woody	Remnant woody*	Total woody
1999-00	0.027	2.901	2.929	2004-05	0.842	10.628	11.470
2000-01	0.000	3.340	3.340	2005-06	0.203	3.597	3.800
2001-02	0.017	2.843	2.861	2006-07	0.557	1.598	2.155
2002-03	0.227	2.075	2.302	2007-08	0.062	0.480	0.542
2003-04	0.935	4.790	5.725	2008-09	0.075	0.193	0.268

\* Regional ecosystem remnant mapping prior to 1999 not used in this analysis.

## Woody vegetation clearing by tenure

Table 2. Woody vegetation clearing rates in the Southern Gulf Catchments NRM region by tenure.

Period	Woody vegetation clearing rate (,000ha/yr) on					Total
	Freehold	Leasehold	Reserves	Other tenures		
1988-91	1.954	4.325	0.006	0.014		6.299
1991-95	0.626	1.408	0.000	0.000		2.034
1995-97	3.257	2.025	0.000	0.000		5.282
1997-99	0.349	2.762	0.000	0.000		3.111
1999-00	1.616	1.313	0.000	0.000		2.929
2000-01	0.032	3.308	0.000	0.000		3.340
2001-02	1.193	1.667	0.000	0.000		2.861
2002-03	0.645	1.657	0.000	0.000		2.302
2003-04	0.669	5.006	0.000	0.000		5.675
2004-05	0.952	10.518	0.000	0.000		11.470
2005-06	2.380	1.420	0.001	0.000		3.800
2006-07	0.410	1.744	0.001	0.000		2.155
2007-08	0.095	0.447	0.000	0.000		0.542
2008-09	0.041	0.227	0.000	0.000		0.268

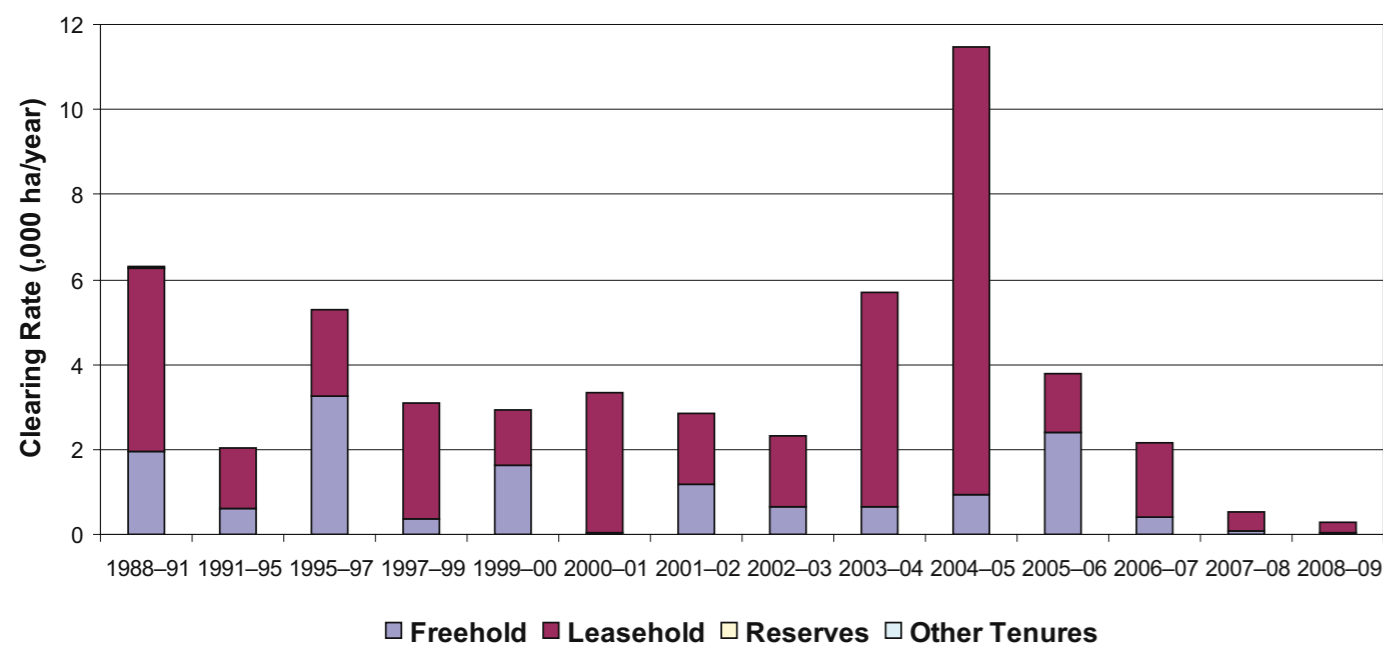


Figure 3. Woody vegetation clearing rates in the Southern Gulf Catchments NRM region by tenure.

## Woody vegetation clearing by subcatchment

Table 3. Woody vegetation clearing rates in the Southern Gulf Catchments NRM region by subcatchment #.

Period	Woody vegetation clearing rate (,000ha/yr) for								
	Cliffdale Creek	Cloncurry River	Flinders River	Leichhardt River	Morning Inlet	Mornington Island	Nicholson River	Saxby River	Total
2006-07	0.567	0.000	1.112	0.349	0.004	0.000	0.018	0.107	2.155
2007-08	0.003	0.021	0.313	0.121	0.000	0.000	0.052	0.033	0.542
2008-09	0.000	0.104	0.119	0.018	0.001	0.002	0.001	0.023	0.268

# Please refer to Figure 27 of the main report (DERM, 2010) for the location of each subcatchment.

## Remaining woody vegetation

Table 4. Remaining woody vegetation in the Southern Gulf Catchments NRM region by subcatchment.

	Cliffdale Creek	Cloncurry River	Eight Mile Creek	Flinders River	L Creek	Lagoon Creek	Leichhardt River
Catchment area (,000 ha)	618	4734	163	5188	194	283	3288
Area woody 2008 V2.3 (,000 ha)	555	1256	150	2116	87	264	2196
% of catchment woody in 2008	90	27	92	41	45	93	67

Table 4. continued

	Misc other Islands	Morning Inlet	Mornington Island	Nicholson River	Saxby River	Settlement River	Total
Catchment area (,000 ha)	24	173	100	3564	1015	111	19456
Area woody 2008 V2.3 (,000 ha)	15	98	86	2198	548	98	9666
% of catchment woody in 2008	62	57	86	62	54	89	50

Note: Catchments with a low proportion of woody vegetation cover may contain significant areas of natural grasslands.

## Woody vegetation clearing by replacement land cover

Table 5. Woody vegetation clearing rates in the Southern Gulf Catchments NRM region by replacement land cover.

Period	Wood vegetation clearing rate (,000ha/yr) for						Total*
	Pasture	Crop	Forestry	Mining	Infrastructure	Settlement	
1988-91	5.445	0.000	0.000	0.001	0.862	0.000	6.308
1991-95	2.034	0.000	0.000	0.000	0.000	0.000	2.034
1995-97	5.082	0.000	0.000	0.041	0.232	0.000	5.356
1997-99	2.124	0.000	0.000	0.256	0.744	0.000	3.125
1999-00	2.346	0.001	0.000	0.208	0.373	0.000	2.929
2000-01	3.221	0.000	0.000	0.000	0.120	0.000	3.340
2001-02	2.063	0.000	0.000	0.000	0.797	0.000	2.861
2002-03	1.736	0.000	0.000	0.000	0.566	0.000	2.302
2003-04	5.378	0.000	0.000	0.050	0.292	0.005	5.725
2004-05	11.347	0.000	0.000	0.004	0.119	0.000	11.470
2005-06	3.690	0.000	0.000	0.053	0.057	0.000	3.800
2006-07	1.965	0.000	0.000	0.144	0.046	0.000	2.155
2007-08	0.484	0.000	0.000	0.043	0.009	0.006	0.542
2008-09	0.266	0.000	0.000	0.000	0.000	0.002	0.268

\* total excludes natural tree death