

Figure 4. Woody vegetation clearing rates in the South East Queensland Catchments NRM region by replacement land cover.

This fact sheet is 10 of 13 in a series detailing land cover change in Queensland's Natural Resource Management Regions. These fact sheets are addenda to the report: Department of Environment and Resource Management (2010). *Land cover change in Queensland 2008-09: a Statewide Landcover and Trees Study (SLATS) Report, Oct 2010*. Department of Environment and Resource Management, Brisbane.

Please refer to this report for further background, methods and explanatory notes.

The Queensland Government supports and encourages the dissemination and exchange of information. However, copyright protects this document. The State of Queensland has no objection to this material being reproduced, made available online or electronically, provided it is for your personal, non-commercial use, or use within your organisation; the material remains unaltered; and the State of Queensland is recognised as the owner.

© The State of Queensland 2010.

For further information:
 Statewide Landcover and Trees Study
 41 Boggo Road
 Dutton Park QLD 4102
 Phone: 61 7 3170 5686
 Email: productdelivery@derm.qld.gov.au

www.derm.qld.gov.au

Land cover change in the South East Queensland Catchments Natural Resource Management region

2008-09

Summary

In 2008-09, the woody vegetation clearing rate for the SEQ region for was 3916 hectares per year (ha/year). This represents a 25% decrease from the previous era.

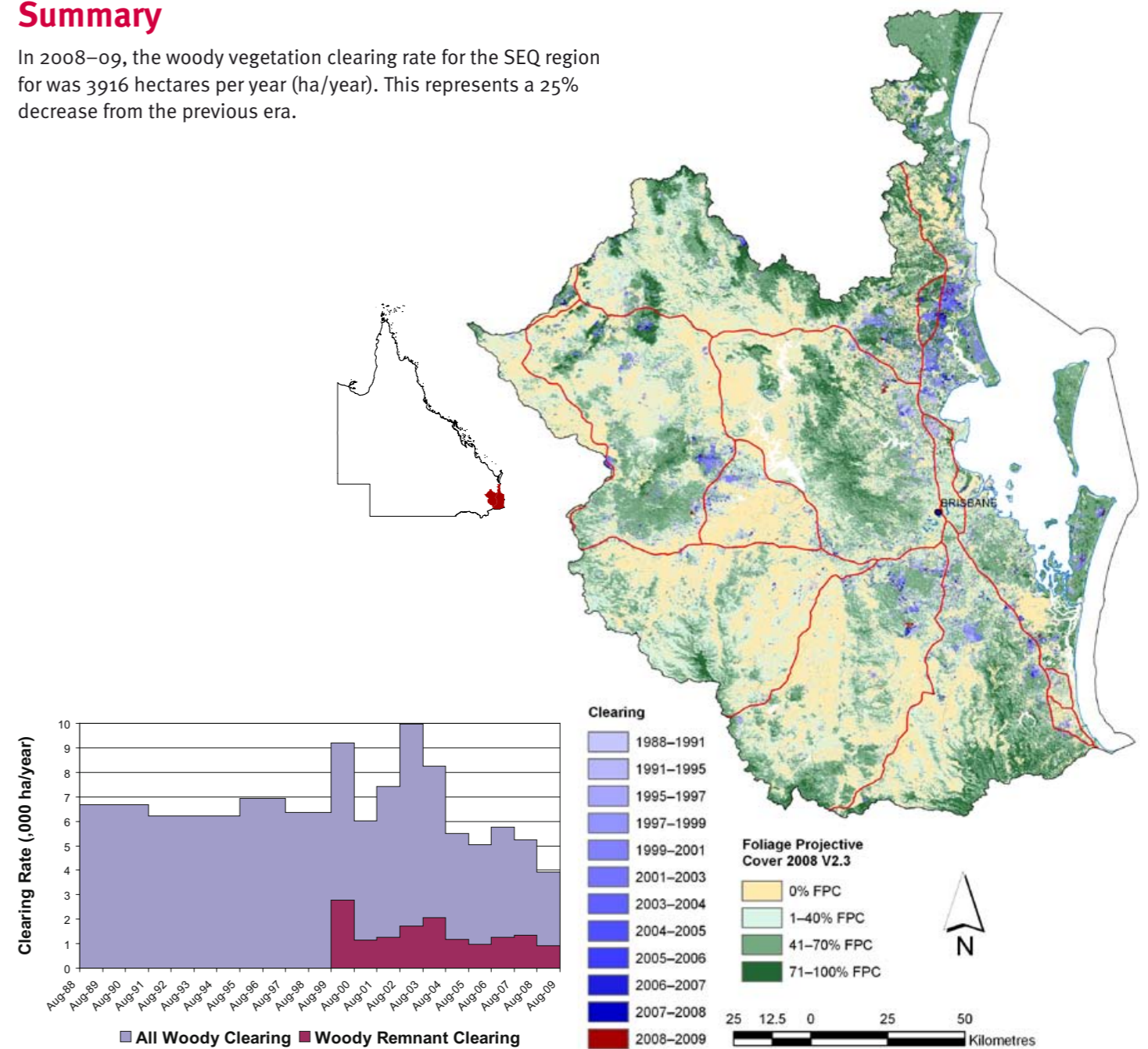


Figure 1. Woody vegetation clearing rates in the South East Queensland Catchments NRM region.

Figure 2. Woody vegetation clearing for each change period.

Woody vegetation clearing by remnant status

Table 1. Remnant and non-remnant woody clearing rates in the South East Queensland Catchments NRM region.

Period	Woody vegetation clearing rate (,00oha/yr) of			Period	Woody vegetation clearing rate (,00oha/yr) of		
	Non-remnant woody	Remnant woody*	Total woody		Non-remnant woody	Remnant woody*	Total woody
1999-00	6.433	2.767	9.201	2004-05	4.336	1.162	5.498
2000-01	4.863	1.145	6.008	2005-06	4.078	0.970	5.048
2001-02	6.150	1.262	7.411	2006-07	4.483	1.267	5.751
2002-03	8.254	1.715	9.969	2007-08	3.898	1.356	5.254
2003-04	6.203	2.063	8.265	2008-09	2.999	0.917	3.916

* Regional ecosystem remnant mapping prior to 1999 not used in this analysis.

Woody vegetation clearing by tenure

Table 2. Woody vegetation clearing rates in the South East Queensland Catchments NRM region by tenure.

Period	Woody vegetation clearing rate (,00oha/yr) on					Total
	Freehold	Leasehold	Reserves	Other tenures		
1988-91	5.402	0.522	0.711	0.028		6.663
1991-95	4.192	0.456	1.540	0.019		6.207
1995-97	5.295	0.535	1.064	0.016		6.910
1997-99	4.408	0.856	1.079	0.019		6.361
1999-00	7.450	0.812	0.918	0.020		9.200
2000-01	5.091	0.395	0.495	0.026		6.007
2001-02	5.589	0.318	1.437	0.064		7.408
2002-03	8.128	0.445	1.315	0.081		9.969
2003-04	6.415	0.600	1.172	0.020		8.206
2004-05	4.059	0.585	0.844	0.010		5.498
2005-06	3.481	0.649	0.917	0.002		5.048
2006-07	4.282	0.446	1.020	0.002		5.751
2007-08	3.742	0.627	0.869	0.016		5.254
2008-09	3.009	0.399	0.507	0.002		3.916

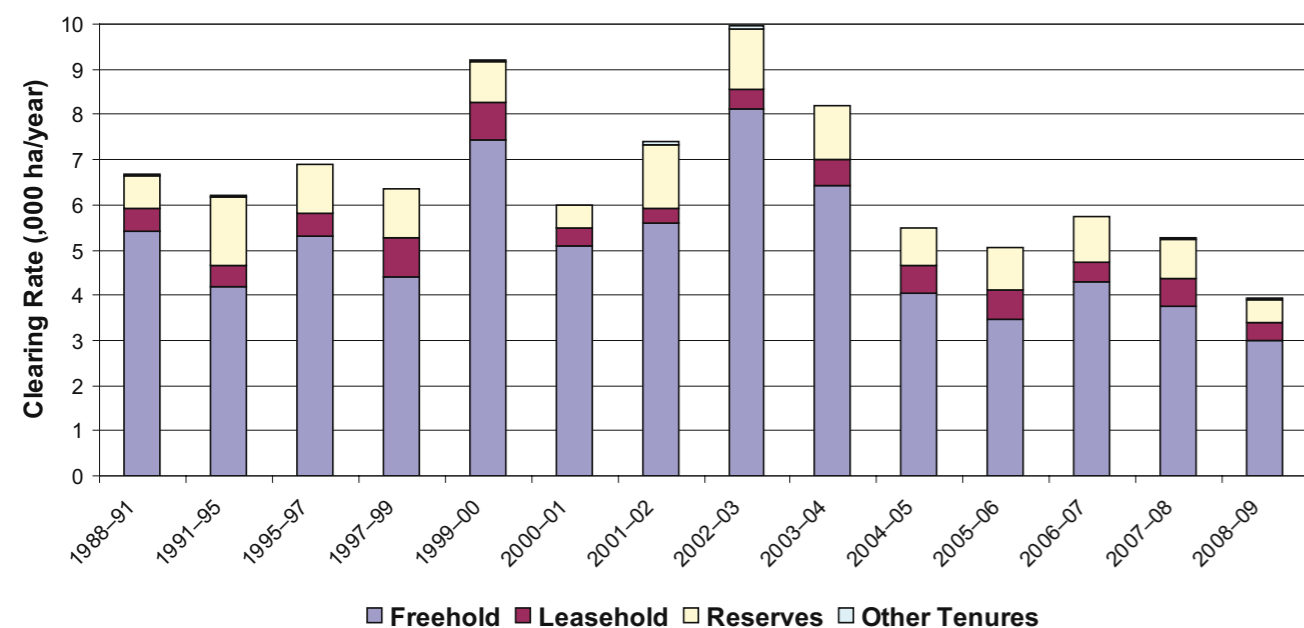


Figure 3. Woody vegetation clearing rates in the South East Queensland Catchments NRM region by tenure.

Almost all the clearing on reserves is for forestry purposes.

Woody vegetation clearing by subcatchment

Table 3. Woody vegetation clearing rates in the South East Queensland Catchments NRM region by subcatchment #.

Period	Woody vegetation clearing rate (,00oha/yr) for						
	Albert River	Bremer River	Brisbane River	Caboolture River	Coomera and Nerang Rivers	Lockyer Creek	Logan River
2006-07	0.344	0.358	1.248	0.199	0.487	0.456	0.729
2007-08	0.120	0.266	1.398	0.361	0.357	0.428	0.870
2008-09	0.051	0.314	0.718	0.451	0.328	0.352	0.685

Table 3. continued

Period	Woody vegetation clearing rate (,00oha/yr) for							
	Maroochy River	Moreton Island	Noosa River	North Pine River	South Pine River	Stanley River	Stradbroke Islands	Total
2006-07	1.392	0.001	0.129	0.131	0.080	0.105	0.093	5.751
2007-08	0.847	0.012	0.166	0.072	0.110	0.082	0.157	5.245
2008-09	0.542	0.000	0.043	0.126	0.083	0.134	0.089	3.916

Please refer to Figure 27 of the main report (DERM, 2010) for the location of each subcatchment.

Remaining woody vegetation

Table 4. Remaining woody vegetation in the South East Queensland Catchments NRM region by subcatchment.

	Albert River	Bremer River	Brisbane River	Caboolture River	Coomera and Nerang Rivers	Lockyer River	Logan River
Catchment area (,000 ha)	78	203	697	47	130	301	336
Area woody 2008 V2.3 (,000 ha)	55	108	464	33	96	195	220
% of catchment woody in 2008	70	53	67	71	74	65	66

Table 4. continued

	Maroochy River	Moreton Island	Noosa River	North Pine River	South Pine River	Stanley River	Stradbroke Islands	Total
Catchment area (,000 ha)	154	17	96	60	42	154	29	2343
Area woody 2008 V2.3 (,000 ha)	110	16	81	46	33	111	25	1592
% of catchment woody in 2008	71	91	84	76	79	72	88	68

Woody vegetation clearing by replacement land cover

Table 5. Woody vegetation clearing rates in the South East Queensland Catchments NRM region by replacement land cover.

Period	Woody vegetation clearing rate (,00oha/yr) for						
	Pasture	Crop	Forestry	Mining	Infrastructure	Settlement	Total*
1988-91	2.858	0.322	0.786	0.192	0.219	2.295	6.673
1991-95	1.970	0.237	1.894	0.097	0.083	1.946	6.228
1995-97	3.330	0.330	1.143	0.175	0.142	1.800	6.920
1997-99	1.980	0.216	2.447	0.204	0.322	1.203	6.373
1999-00	4.455	0.078	2.525	0.316	0.393	1.433	9.201
2000-01	2.164	0.030	2.653	0.066	0.143	0.952	6.008
2001-02	3.426	0.012	2.319	0.134	0.137	1.383	7.411
2002-03	4.296	0.021	2.050	0.176	0.280	3.138	9.960
2003-04	3.145	0.034	1.685	0.201	0.235	2.965	8.265
2004-05	2.849	0.000	1.228	0.194	0.151	1.076	5.498
2005-06	1.852	0.002	1.625	0.216	0.126	1.227	5.048
2006-07	2.065	0.005	1.260	0.169	0.543	1.708	5.751
2007-08	1.716	0.000	1.114	0.200	0.616	1.608	5.254
2008-09	1.459	0.001	0.503	0.083	0.326	1.544	3.916

* total excludes natural tree death