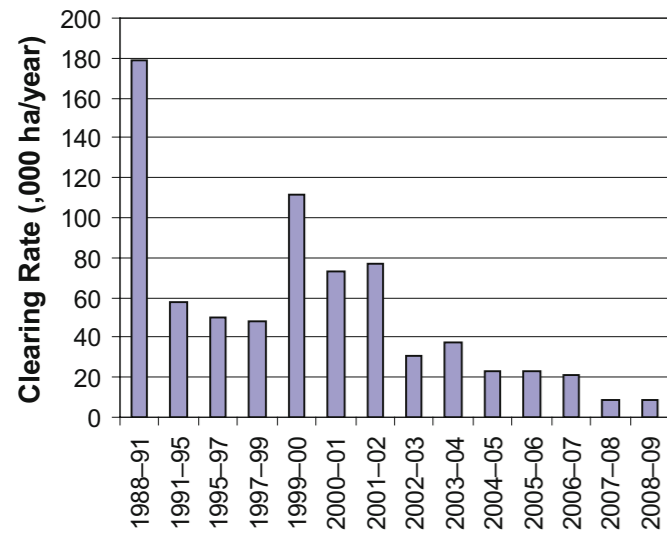


# Land cover change in the North Queensland Dry Tropics Natural Resource Management region

2008-09



Pasture

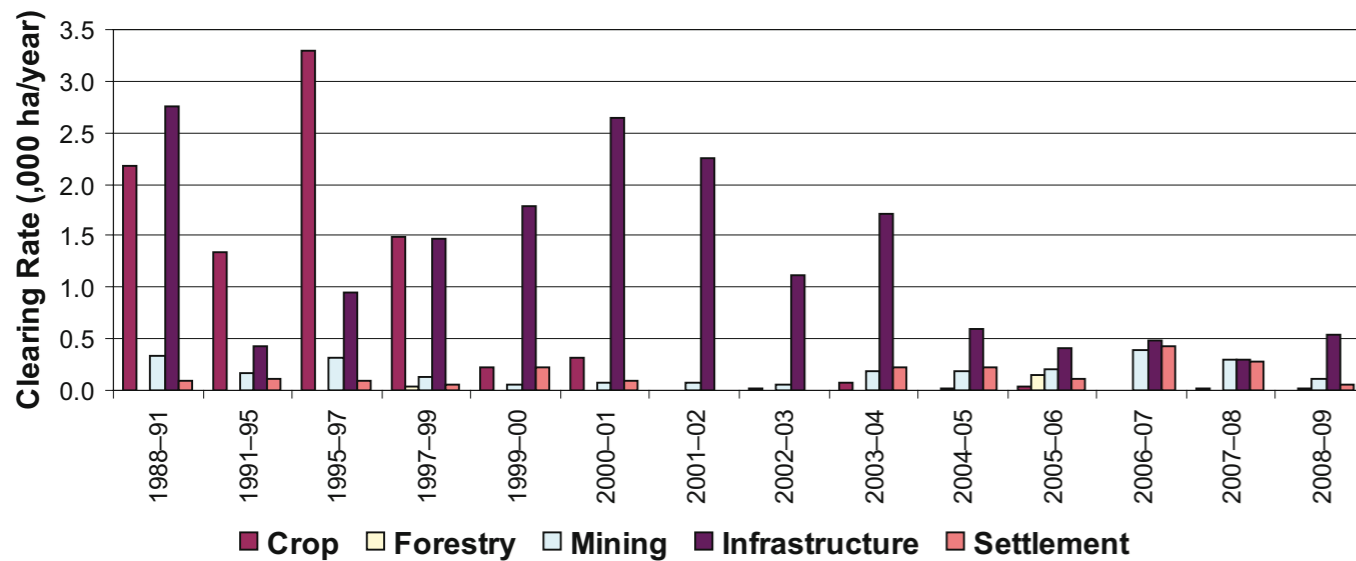


Figure 4. Woody vegetation clearing rates in the North Queensland Dry Tropics NRM region by replacement land cover.

This fact sheet is 7 of 13 in a series detailing land cover change in Queensland's Natural Resource Management Regions. These fact sheets are addenda to the report: Department of Environment and Resource Management (2010). *Land cover change in Queensland 2008-09: a Statewide Landcover and Trees Study (SLATS) Report, Oct 2010*. Department of Environment and Resource Management, Brisbane.

Please refer to this report for further background, methods and explanatory notes.

The Queensland Government supports and encourages the dissemination and exchange of information. However, copyright protects this document. The State of Queensland has no objection to this material being reproduced, made available online or electronically, provided it is for your personal, non-commercial use, or use within your organisation; the material remains unaltered; and the State of Queensland is recognised as the owner.

© The State of Queensland 2010.

For further information:  
 Statewide Landcover and Trees Study  
 41 Boggo Road  
 Dutton Park QLD 4102  
 Phone: 61 7 3170 5686  
 Email: productdelivery@derm.qld.gov.au

[www.derm.qld.gov.au](http://www.derm.qld.gov.au)

#29552

## Summary

In 2008-09, the woody vegetation clearing rate for the North Queensland Dry Tropics region was 9481 hectares per year (ha/year), which was comparable with that mapped last era.

At 4039 ha/year, remnant woody vegetation clearing accounted for 43% of the total woody vegetation clearing in the region—a 26% decrease from last era.

In 2008-09, clearing to pasture represented 92% of the total woody vegetation clearing in the region.

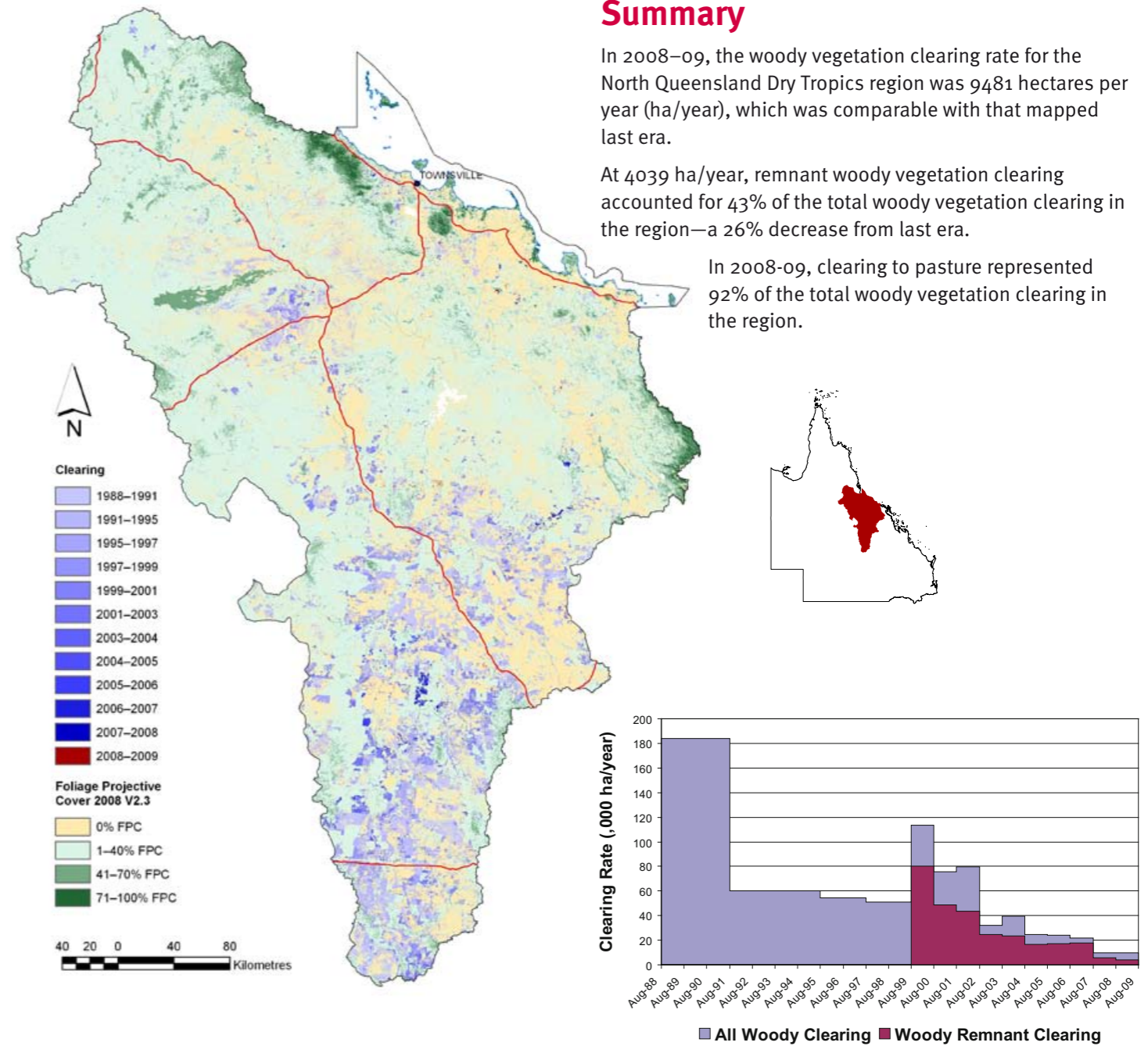


Figure 1. Woody vegetation clearing for each change period.

Figure 2. Woody vegetation clearing rates in the North Queensland Dry Tropics NRM region.

## Woody vegetation clearing by remnant status

Table 1. Remnant and non-remnant woody vegetation clearing rates in the North Queensland Dry Tropics NRM region.

Period	Woody vegetation clearing rate (,oooha/yr) of			Period	Woody vegetation clearing rate (,oooha/yr) of		
	Non-remnant woody	Remnant woody*	Total woody		Non-remnant woody	Remnant woody*	Total woody
1999-00	33.557	80.086	113.642	2004-05	7.985	16.554	24.539
2000-01	26.807	48.933	75.739	2005-06	6.423	17.468	23.891
2001-02	35.783	43.840	79.622	2006-07	4.228	17.829	22.057
2002-03	7.821	24.523	32.344	2007-08	4.069	5.476	9.545
2003-04	16.091	23.679	39.770	2008-09	5.442	4.039	9.481

\* Regional ecosystem remnant mapping prior to 1999 not used in this analysis.

## Woody vegetation clearing by tenure

Table 2. Woody vegetation clearing rates in the North Queensland Dry Tropics NRM region by tenure.

Period	Woody vegetation clearing rate (,oooha/yr) on				
	Freehold	Leasehold	Reserves	Other tenures	Total
1988-91	36.812	146.770	0.167	0.414	184.163
1991-95	12.932	47.020	0.015	0.087	60.054
1995-97	12.762	41.575	0.047	0.264	54.649
1997-99	10.722	39.573	0.023	0.765	51.082
1999-00	25.134	88.417	0.064	0.028	113.642
2000-01	5.860	69.865	0.008	0.006	75.739
2001-02	8.468	71.072	0.032	0.051	79.622
2002-03	3.440	28.887	0.010	0.006	32.344
2003-04	5.961	33.662	0.041	0.106	39.770
2004-05	3.619	20.867	0.052	0.001	24.539
2005-06	4.677	19.159	0.051	0.004	23.891
2006-07	3.325	18.710	0.017	0.005	22.057
2007-08	1.922	7.602	0.017	0.004	9.545
2008-09	1.125	8.342	0.013	0.000	9.481

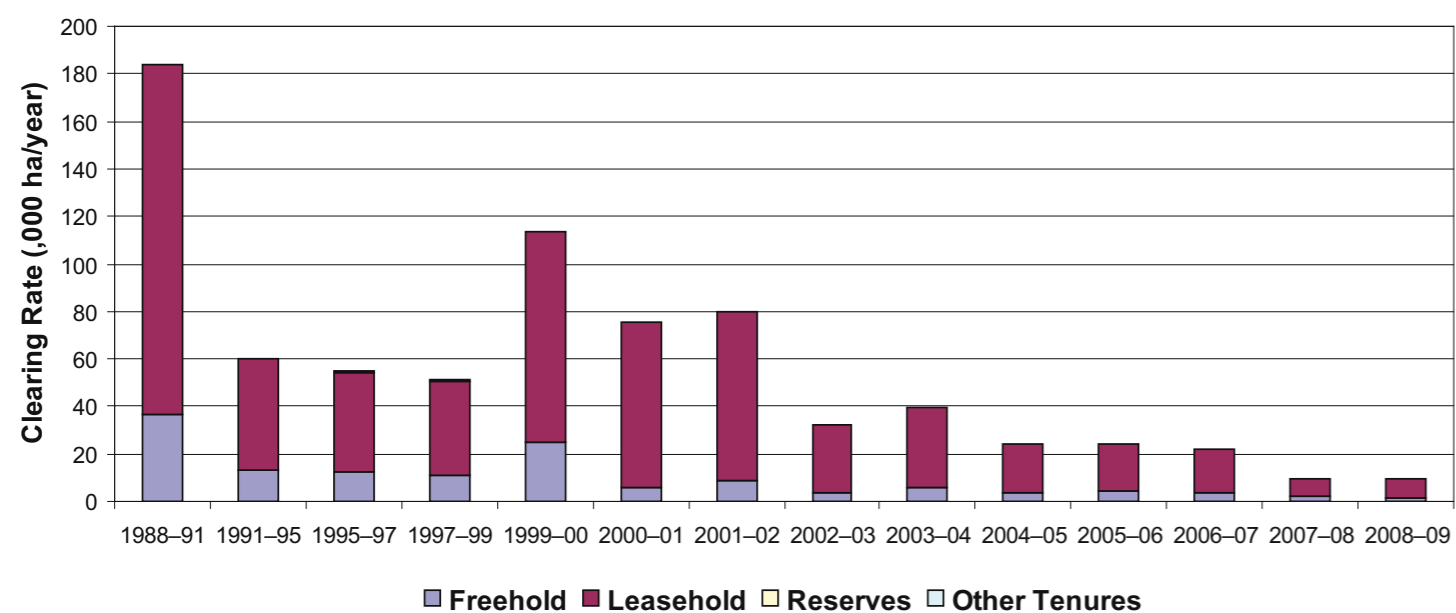


Figure 3. Woody vegetation clearing rates in the North Queensland Dry Tropics NRM region by tenure.

## Woody vegetation clearing by subcatchment

Table 3. Woody vegetation clearing rates in the North Queensland Dry Tropics NRM region by subcatchment #.

Period	Woody vegetation clearing rate (,oooha/yr) for					
	Barratta Creek	Black River	Bohle River	Bowen River	Don River	Haughton River
2006-07	0.012	0.829	0.451	1.418	0.205	0.298
2007-08	0.049	0.339	0.355	0.405	0.319	0.238
2008-09	0.622	11.362	0.012	0.004	0.095	1.761

Table 3. continued

Period	Woody vegetation clearing rate (,oooha/yr) for					
	Lower Burdekin River	Proserpine river	Ross River	Suttor River	Upper Burdekin River	Total
2006-07	0.837	0.000	0.139	16.457	1.411	22.057
2007-08	0.565	0.000	0.123	6.028	1.117	9.545
2008-09	0.871	0.003	0.163	6.929	0.681	9.481

# Please refer to Figure 27 of the main report (DERM, 2010) for the location of each subcatchment.

## Remaining woody vegetation

Table 4. Remaining woody vegetation in the North Queensland Dry Tropics NRM region by subcatchment.

	Barratta Creek	Black River	Bohle River	Bowen River	Don River	Haughton River
Catchment area (,000 ha)	183	106	37	945	369	222
Area woody 2008 V2.3 (,000 ha)	63	91	18	660	211	136
% of catchment woody in 2008	34	86	48	70	57	61

Table 4. continued

	Lower Burdekin River	Proserpine river	Ross River	Suttor River	Upper Burdekin River	Total
Catchment area (,000 ha)	1047	5	134	7395	3625	14086
Area woody 2008 V2.3 (,000 ha)	623	2	87	4364	2891	9162
% of catchment woody in 2008	59	47	65	59	80	65

## Woody vegetation clearing by replacement land cover

Table 5. Woody vegetation clearing rates in the North Queensland Dry Tropics NRM region by replacement land cover.

Period	Woody vegetation clearing rate (,oooha/yr) for						
	Pasture	Crop	Forestry	Mining	Infrastructure	Settlement	Total*
1988-91	178.877	2.170	0.000	0.335	2.756	0.091	184.229
1991-95	58.008	1.335	0.007	0.162	0.431	0.112	60.055
1995-97	50.011	3.288	0.001	0.321	0.941	0.096	54.658
1997-99	47.893	1.490	0.033	0.139	1.478	0.050	51.083
1999-00	111.344	0.218	0.009	0.059	1.791	0.221	113.642
2000-01	72.627	0.309	0.004	0.067	2.636	0.096	75.739
2001-02	77.296	0.002	0.000	0.065	2.256	0.002	79.622
2002-03	31.159	0.019	0.000	0.053	1.113	0.000	32.344
2003-04	37.590	0.080	0.000	0.182	1.704	0.214	39.770
2004-05	23.506	0.000	0.019	0.193	0.598	0.223	24.539
2005-06	22.982	0.033	0.140	0.208	0.407	0.120	23.891
2006-07	20.770	0.002	0.000	0.384	0.482	0.419	22.057
2007-08	8.630	0.016	0.008	0.303	0.300	0.288	9.545
2008-09	8.760	0.005	0.014	0.114	0.540	0.047	9.481

\* total excludes natural tree death