

Figure 4. Woody vegetation clearing rates in the Northern Gulf Resource Management Group NRM Region by replacement land cover.

## Land cover change in the Northern Gulf Resource Management Group Natural Resource Management region

2008-09

### Summary

In 2008-09, the woody vegetation clearing rate in the Northern Gulf region decreased by 22% from the previous era, to 2114 hectares per year (ha/year). Clearing of remnant woody vegetation comprised 79% of the woody vegetation clearing in the region.

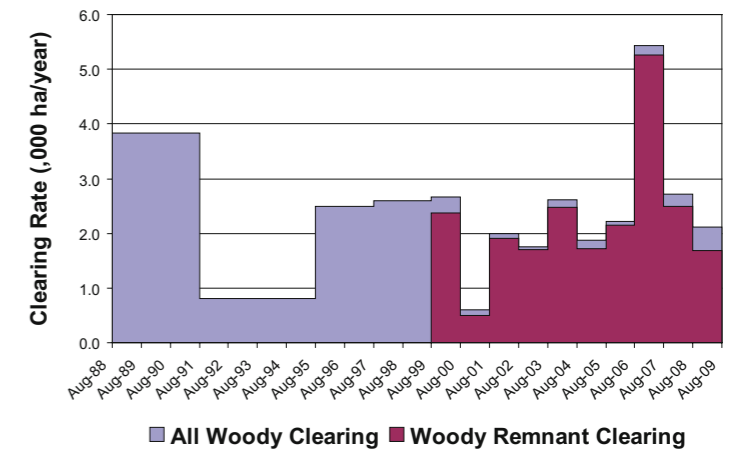


Figure 1. Woody vegetation clearing rates in the Northern Gulf Resource Management Group NRM region.

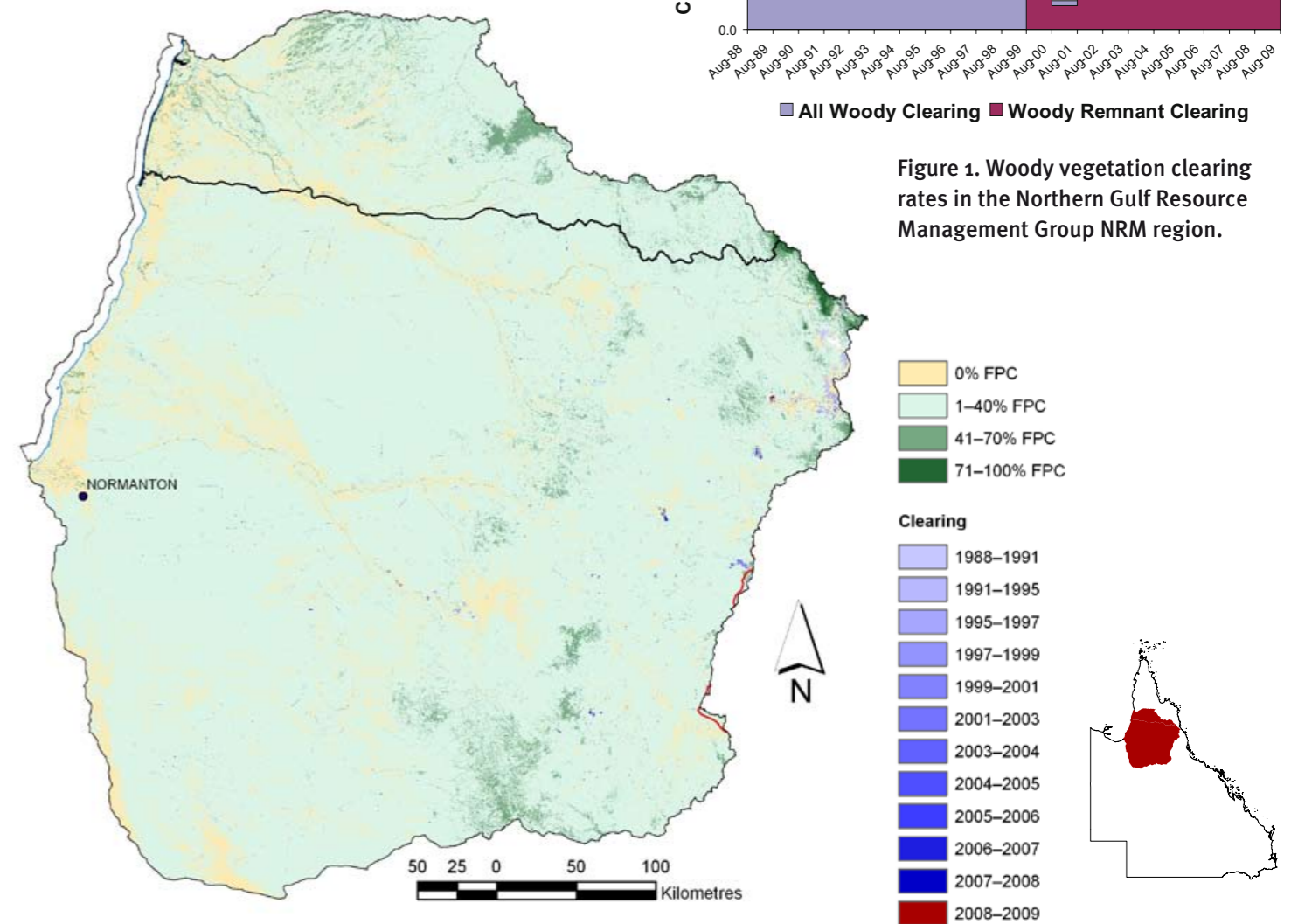


Figure 2. Woody vegetation clearing for each change period.

Note that the Northern Gulf Resource Management Group Natural Resource Management region overlaps the Cape York Natural Resource Management region.

This fact sheet is 6 of 13 in a series detailing land cover change in Queensland's Natural Resource Management Regions. These fact sheets are addenda to the report: Department of Environment and Resource Management (2010). *Land cover change in Queensland 2008-09: a Statewide Landcover and Trees Study (SLATS) Report, Oct 2010*. Department of Environment and Resource Management, Brisbane.

Please refer to this report for further background, methods and explanatory notes.

The Queensland Government supports and encourages the dissemination and exchange of information. However, copyright protects this document. The State of Queensland has no objection to this material being reproduced, made available online or electronically, provided it is for your personal, non-commercial use, or use within your organisation; the material remains unaltered; and the State of Queensland is recognised as the owner.

© The State of Queensland 2010.

For further information:  
Statewide Landcover and Trees Study  
41 Boggo Road  
Dutton Park QLD 4102  
Phone: 61 7 3170 5686  
Email: [productdelivery@derm.qld.gov.au](mailto:productdelivery@derm.qld.gov.au)

[www.derm.qld.gov.au](http://www.derm.qld.gov.au)

#29552

## Woody vegetation clearing by remnant status

Table 1. Remnant and non-remnant woody clearing rates in the Northern Gulf Resource Management Group NRM region.

Period	Woody vegetation clearing rate (,oooha/yr) of			Period	Woody vegetation clearing rate (,oooha/yr) of		
	Non-remnant woody	Remnant woody*	Total woody		Non-remnant woody	Remnant woody*	Total woody
1999-00	0.298	2.370	2.668	2004-05	0.161	1.717	1.878
2000-01	0.094	0.501	0.595	2005-06	0.085	2.140	2.226
2001-02	0.089	1.910	1.998	2006-07	0.167	5.261	5.428
2002-03	0.051	1.702	1.753	2007-08	0.219	2.497	2.716
2003-04	0.142	2.473	2.615	2008-09	0.437	1.677	2.114

\* Regional ecosystem remnant mapping prior to 1999 not used in this analysis.

## Woody vegetation clearing by tenure

Table 2. Woody vegetation clearing rates in the Northern Gulf Resource Management Group NRM region by tenure.

Period	Woody vegetation clearing rate (,oooha/yr) on				
	Freehold	Leasehold	Reserves	Other tenures	Total
1988-91	1.651	2.138	0.016	0.036	3.841
1991-95	0.514	0.260	0.008	0.028	0.810
1995-97	0.927	1.492	0.042	0.025	2.487
1997-99	0.807	1.739	0.033	0.018	2.596
1999-00	1.012	1.612	0.022	0.022	2.668
2000-01	0.202	0.371	0.017	0.006	0.595
2001-02	0.138	1.854	0.002	0.004	1.998
2002-03	0.129	1.622	0.000	0.002	1.753
2003-04	0.235	2.365	0.015	0.000	2.615
2004-05	0.042	1.835	0.001	0.000	1.878
2005-06	0.386	1.833	0.007	0.000	2.226
2006-07	0.201	5.221	0.003	0.004	5.428
2007-08	0.151	2.558	0.006	0.001	2.716
2008-09	0.497	1.580	0.037	0.000	2.114

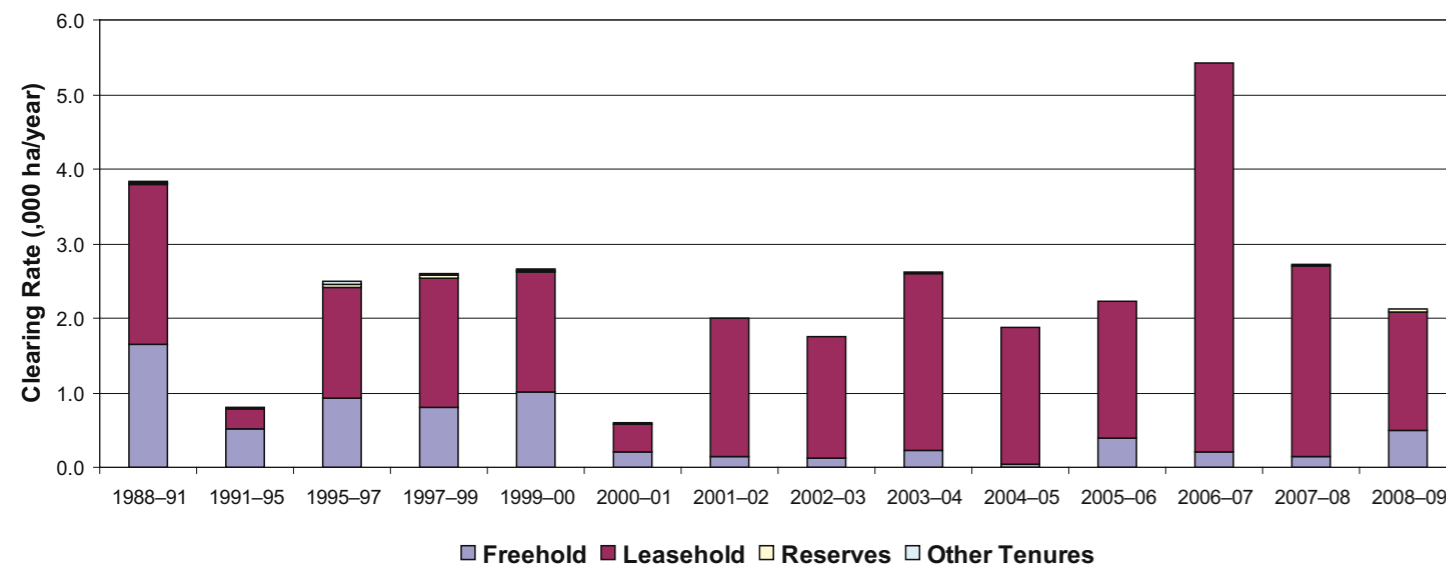


Figure 3. Woody vegetation clearing rates in the Northern Gulf NRM Group Resource Management region by tenure.

## Woody vegetation clearing by subcatchment

Table 3. Woody vegetation clearing rates in the Northern Gulf Resource Management Group NRM region by subcatchment #.

Period	Woody vegetation clearing rate (,oooha/yr) for								
	Alice River	Einasleigh River	Gilbert River	Mitchell River	Norman River	Palmer River	Staaten River	Walsh River	Total
2006-07	0.056	0.648	0.345	2.129	1.315	0.032	0.642	0.263	5.428
2007-08	0.033	0.722	0.265	0.673	0.533	0.046	0.171	0.274	2.716
2008-09	0.258	0.377	0.131	0.259	0.378	0.109	0.078	0.525	2.114

# Please refer to Figure 27 of the main report (DERM, 2010) for the location of each subcatchment.

## Remaining woody vegetation

Table 4. Remaining woody vegetation in the Northern Gulf Resource Management Group NRM region by subcatchment.

	Alice River	Einasleigh River	Gilbert River	Mitchell River	Norman River	Palmer River	Staaten River	Walsh River	Total
Catchment area (,000 ha)	1294	2437	2203	4143	5042	832	2557	896	19404
Area woody 2008 V2.3 (,000 ha)	1155	2220	1884	3565	4387	804	2370	804	17190
% of catchment woody in 2008	89	91	86	86	87	97	93	90	89

## Woody vegetation clearing by replacement land cover

Table 5. Woody vegetation clearing rates in the Northern Gulf Resource Management Group NRM region by replacement land cover.

Period	Woody vegetation clearing rate (,oooha/yr) for						
	Pasture	Crop	Forestry	Mining	Infrastructure	Settlement	Total*
1988-91	1.696	0.432	0.000	0.104	1.608	0.000	3.841
1991-95	0.100	0.633	0.000	0.021	0.058	0.000	0.812
1995-97	0.501	1.065	0.000	0.119	0.787	0.015	2.488
1997-99	0.957	0.495	0.055	0.051	1.041	0.000	2.599
1999-00	1.302	0.264	0.013	0.008	1.081	0.000	2.668
2000-01	0.198	0.089	0.000	0.003	0.305	0.000	0.595
2001-02	0.680	0.046	0.000	0.005	1.268	0.000	1.998
2002-03	0.628	0.013	0.000	0.001	1.111	0.000	1.753
2003-04	1.808	0.000	0.000	0.000	0.807	0.000	2.615
2004-05	0.890	0.005	0.000	0.002	0.981	0.000	1.878
2005-06	1.906	0.013	0.001	0.006	0.300	0.000	2.226
2006-07	5.316	0.000	0.000	0.002	0.110	0.000	5.428
2007-08	2.560	0.000	0.000	0.038	0.118	0.000	2.716
2008-09	1.702	0.001	0.000	0.006	0.398	0.007	2.114

\* total excludes natural tree death