

Land cover change in the Fitzroy Basin Association Natural Resource Management region

2008-09

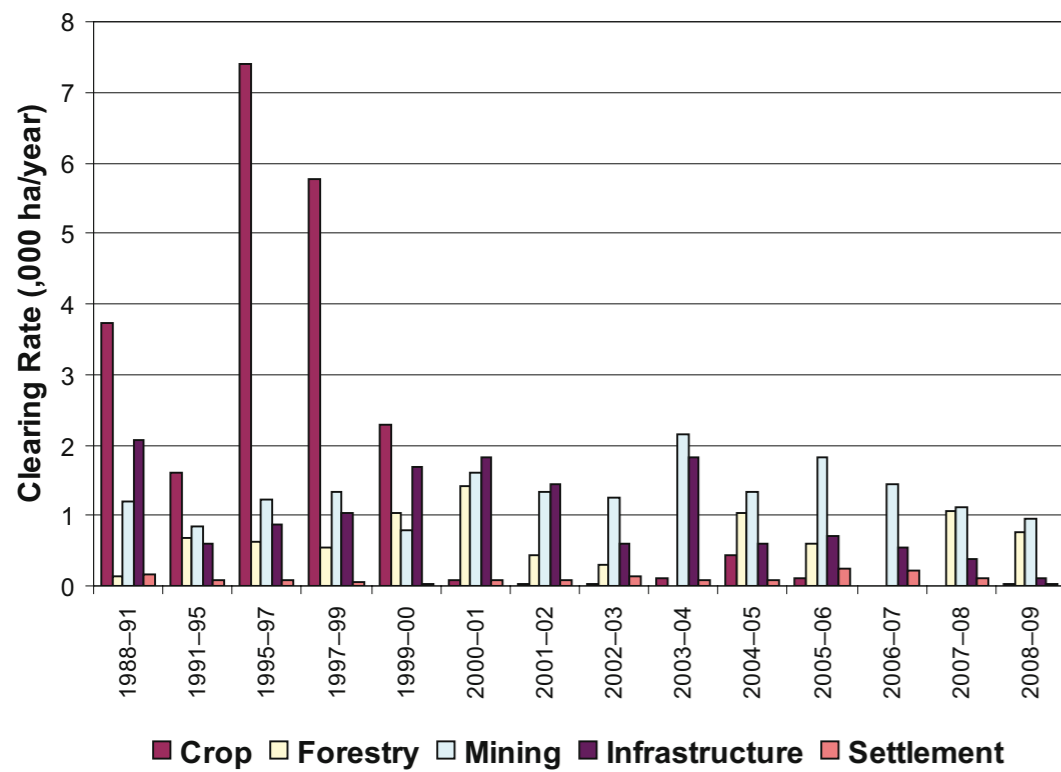
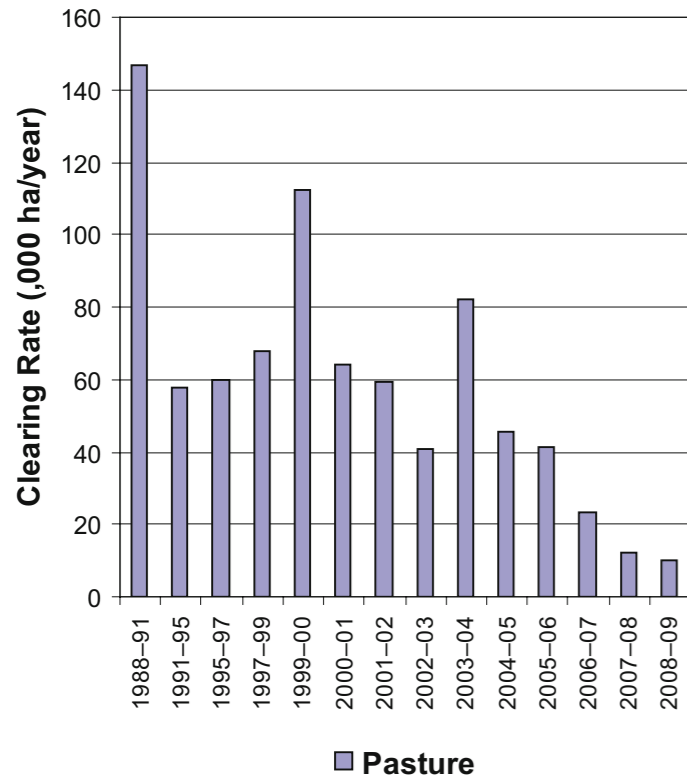


Figure 4. Woody vegetation clearing rates in the Fitzroy Basin Association NRM region by replacement land cover.

This fact sheet is 5 of 13 in a series detailing land cover change in Queensland's Natural Resource Management Regions. These fact sheets are addenda to the report: Department of Environment and Resource Management (2010). *Land cover change in Queensland 2008-09: a Statewide Landcover and Trees Study (SLATS) Report, Oct 2010*. Department of Environment and Resource Management, Brisbane.

Please refer to this report for further background, methods and explanatory notes.

The Queensland Government supports and encourages the dissemination and exchange of information. However, copyright protects this document. The State of Queensland has no objection to this material being reproduced, made available online or electronically, provided it is for your personal, non-commercial use, or use within your organisation; the material remains unaltered; and the State of Queensland is recognised as the owner.

© The State of Queensland 2010.

For further information:
 Statewide Landcover and Trees Study
 41 Boggo Road
 Dutton Park QLD 4102
 Phone: 61 7 3170 5686
 Email: productdelivery@derm.qld.gov.au

www.derm.qld.gov.au

#29552

Summary

In 2008-09, the woody vegetation clearing rate for the Fitzroy region, at 11 884 hectares per year (ha/year), continued its decline since 2003-04.

Since the previous era woody vegetation clearing decreased by 20% and remnant woody vegetation clearing by 32%.

This woody vegetation clearing rate is the lowest measured rate in the Fitzroy region since satellite monitoring began.

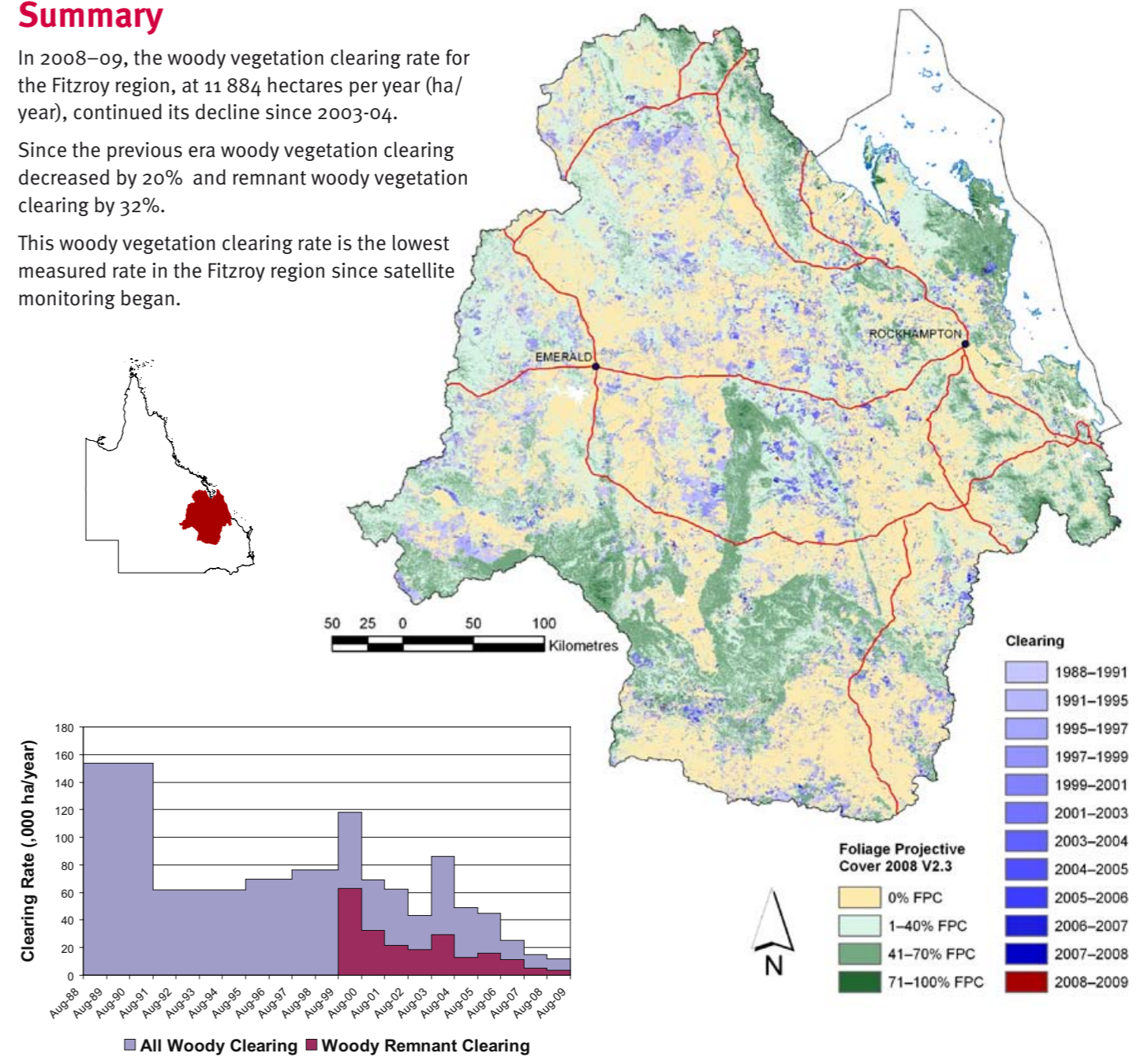


Figure 1. Woody vegetation clearing rates in the Fitzroy Basin Association NRM region.

Figure 2. Woody vegetation clearing for each change period.

Woody vegetation clearing by remnant status

Table 1. Remnant and non-remnant woody vegetation clearing rates in the Fitzroy Basin Association NRM region.

Period	Woody vegetation clearing rate (,oooha/yr) of			Period	Woody vegetation clearing rate (,oooha/yr) of		
	Non-remnant woody	Remnant woody*	Total woody		Non-remnant woody	Remnant woody*	Total woody
1999-00	55.063	63.169	118.232	2004-05	36.170	12.851	49.020
2000-01	36.685	32.246	68.931	2005-06	28.739	16.243	44.982
2001-02	40.955	21.632	62.587	2006-07	14.235	11.269	25.504
2002-03	25.025	18.345	43.371	2007-08	9.592	5.232	14.825
2003-04	56.923	29.321	86.244	2008-09	8.352	3.532	11.884

* Regional ecosystem remnant mapping prior to 1999 not used in this analysis.

Woody vegetation clearing by tenure

Table 2. Woody vegetation clearing rates in the Fitzroy Basin Association NRM region by tenure.

Period	Woody vegetation clearing rate (,oooha/yr) on					Total
	Freehold	Leasehold	Reserves	Other tenures		
1988-91	85.325	65.837	1.419	1.303		153.884
1991-95	37.633	22.824	0.969	0.326		61.752
1995-97	43.537	24.971	0.955	0.358		69.821
1997-99	56.027	19.630	0.634	0.097		76.389
1999-00	87.516	29.484	1.224	0.007		118.232
2000-01	37.899	29.137	1.882	0.013		68.931
2001-02	33.868	27.654	1.022	0.043		62.587
2002-03	27.610	15.190	0.551	0.020		43.371
2003-04	53.670	31.689	0.522	0.362		86.242
2004-05	35.922	11.914	1.041	0.144		49.020
2005-06	30.144	13.661	0.621	0.523		44.949
2006-07	17.443	7.439	0.010	0.612		25.504
2007-08	8.241	5.618	0.921	0.057		14.838
2008-09	6.156	4.836	0.891	0.000		11.884

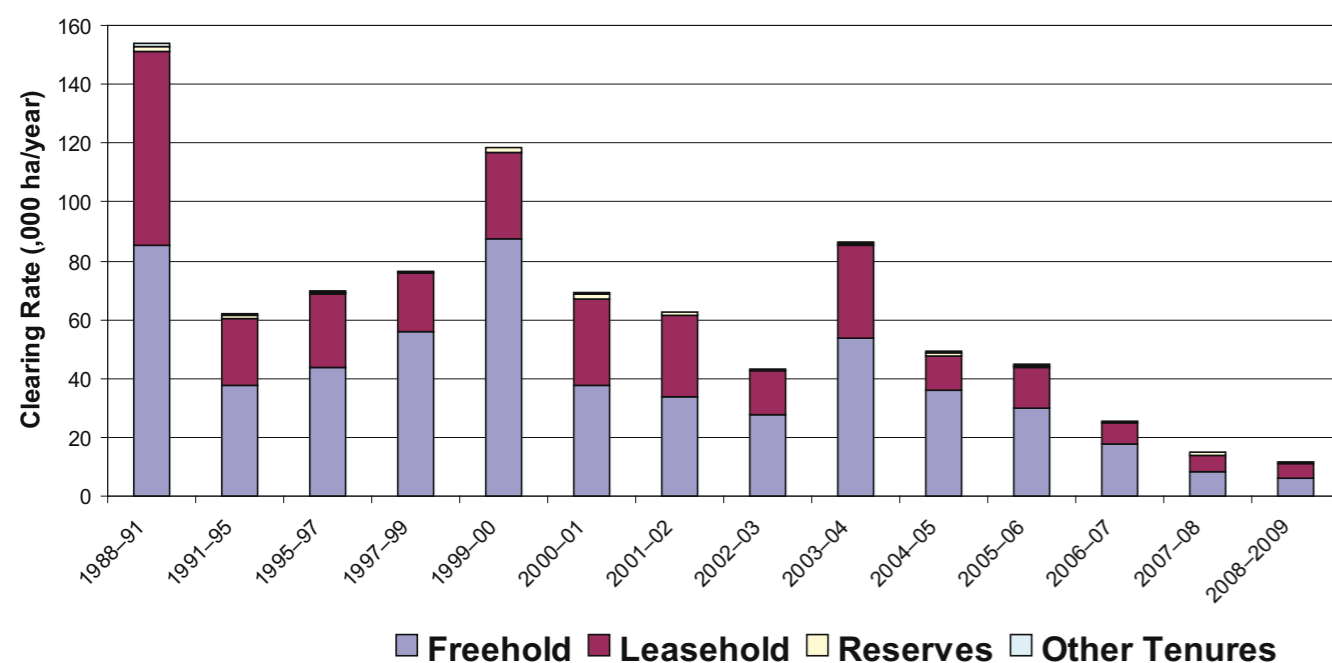


Figure 3. Woody vegetation clearing rates in the Fitzroy Basin Association NRM region by tenure.

Land cover change in the Fitzroy Basin Association NRM region

Woody vegetation clearing by subcatchment

Table 3. Woody vegetation clearing rates in the Fitzroy Basin Association NRM region by subcatchment #.

Period	Woody vegetation clearing rate (,oooha/yr) for						
	Boyne River	Calliope River	Comet River	Curtis Island	Dawson River	Fitzroy River	Isaac River
2006-07	0.467	0.594	2.122	0.152	8.551	2.434	3.679
2007-08	0.071	0.195	1.104	0.000	7.081	0.983	2.634
2008-09	0.117	0.158	1.043	0.000	3.912	0.967	1.851

Table 3. continued

Period	Woody vegetation clearing rate (,oooha/yr) for						
	Mackenzie River	Misc other islands	Nogoa River	Shoalwater River	Styx River	Waterpark Creek	Total
2006-07	1.989	0.039	2.358	2.093	0.451	0.574	25.504
2007-08	0.707	0.000	1.154	0.138	0.342	0.417	14.825
2008-09	1.655	0.000	1.389	0.254	0.084	0.454	11.884

Please refer to Figure 27 of the main report (DERM, 2010) for the location of each subcatchment.

Remaining woody vegetation

Table 4. Remaining woody vegetation in the Fitzroy Basin Association NRM region by subcatchment.

	Boyne River	Calliope River	Comet River	Curtis Island	Dawson River	Fitzroy River	Isaac River
Catchment area (,000 ha)	250	224	1730	58	5076	1143	2237
Area woody 2008 V2.3 (,000 ha)	205	135	970	49	2568	654	1289
% of catchment woody in 2008	82	61	56	84	51	57	58

Table 4. continued

	Mackenzie River	Misc other Islands	Nogoa River	Shoalwater River	Styx River	Waterpark Creek	Total
Catchment area (,000 ha)	1298	35	2770	360	301	183	15664
Area woody 2008 V2.3 (,000 ha)	587	24	1645	256	163	161	8707
% of catchment woody in 2008	45	71	59	71	54	88	56

Woody vegetation clearing by replacement land cover

Table 5. Woody vegetation clearing rates in the Fitzroy Basin Association NRM region by replacement land cover.

Period	Woody vegetation clearing rate (,oooha/yr) for						
	Pasture	Crop	Forestry	Mining	Infrastructure	Settlement	Total*
1988-91	146.617	3.733	0.146	1.199	2.075	0.157	153.928
1991-95	57.946	1.617	0.691	0.836	0.607	0.074	61.772
1995-97	59.667	7.388	0.624	1.222	0.868	0.092	69.861
1997-99	67.683	5.772	0.556	1.338	1.030	0.055	76.433
1999-00	112.450	2.274	1.026	0.777	1.683	0.022	118.232
2000-01	63.914	0.073	1.422	1.619	1.823	0.081	68.931
2001-02	59.275	0.032	0.428	1.340	1.444	0.068	62.587
2002-03	41.100	0.017	0.292	1.240	0.594	0.128	43.371
2003-04	82.097	0.112	0.000	2.144	1.822	0.068	86.244
2004-05	45.522	0.429	1.038	1.347	0.591	0.094	49.020
2005-06	41.474	0.104	0.610	1.826	0.714	0.253	44.982
2006-07	23.284	0.000	0.000	1.450	0.547	0.223	25.504
2007-08	12.152	0.009	1.062	1.129	0.372	0.100	14.825
2008-09	10.003	0.035	0.772	0.941	0.115	0.018	11.884

* total excludes natural tree death