

Land cover change in the Desert Channels Queensland Natural Resource Management region

2008–09

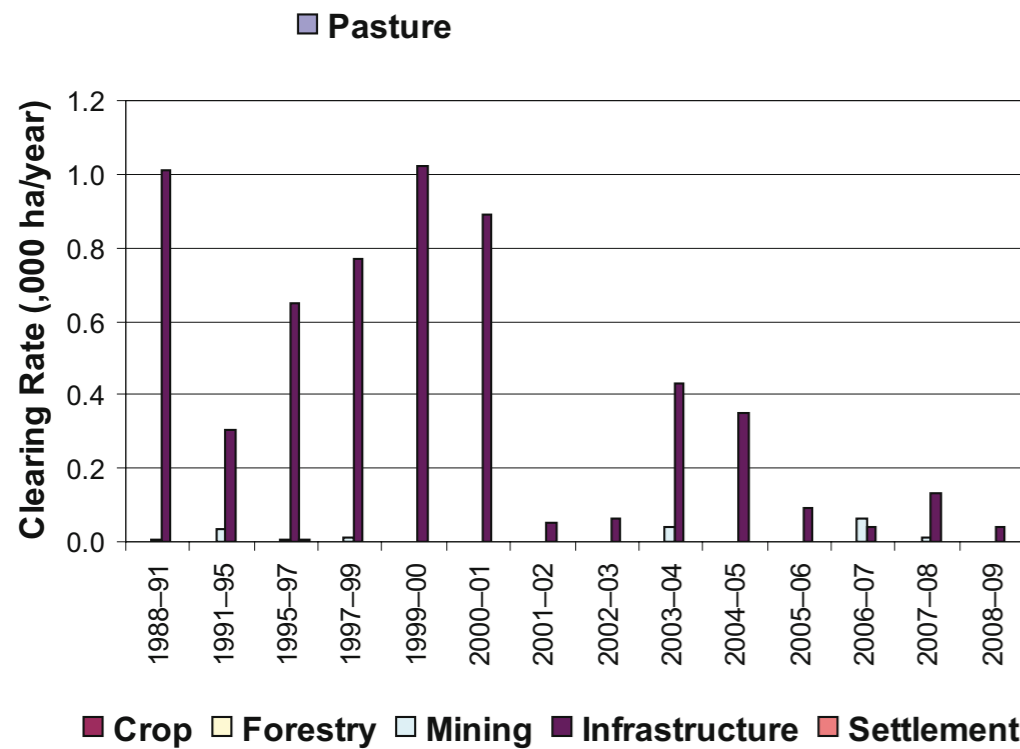
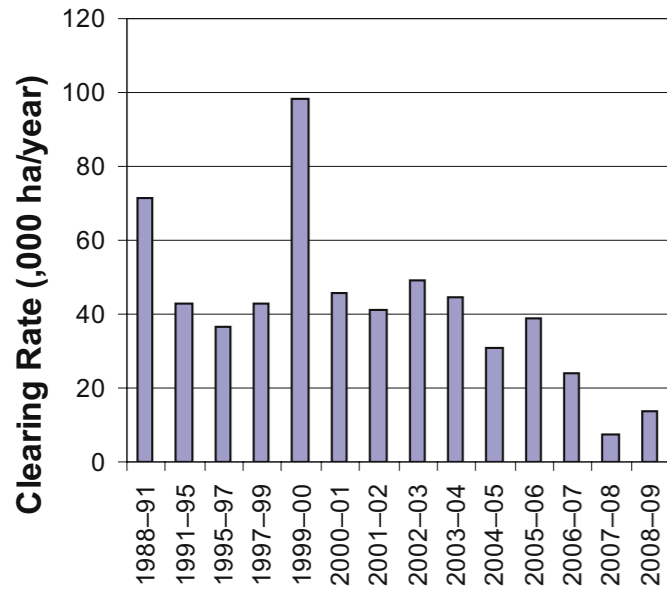


Figure 4. Woody vegetation clearing rates in the Desert Channels Queensland NRM region by replacement land cover.

This fact sheet is 4 of 13 in a series detailing land cover change in Queensland's Natural Resource Management Regions. These fact sheets are addenda to the report: Department of Environment and Resource Management (2010). *Land cover change in Queensland 2008–09: a Statewide Landcover and Trees Study (SLATS) Report, Oct 2010*. Department of Environment and Resource Management, Brisbane.

Please refer to this report for further background, methods and explanatory notes.

The Queensland Government supports and encourages the dissemination and exchange of information. However, copyright protects this document. The State of Queensland has no objection to this material being reproduced, made available online or electronically, provided it is for your personal, non-commercial use, or use within your organisation; the material remains unaltered; and the State of Queensland is recognised as the owner.

© The State of Queensland 2010.

For further information:
 Statewide Landcover and Trees Study
 41 Boggo Road
 Dutton Park QLD 4102
 Phone: 61 7 3170 5686
 Email: productdelivery@derm.qld.gov.au

www.derm.qld.gov.au

#29552

Summary

In 2008–09, the woody vegetation clearing rate for the Desert Channels increased by 88% from the previous era. Of the 13 856 hectares per year (ha/year) cleared, approximately 53% was remnant woody vegetation.

Woody vegetation clearing in the Desert Channels region was primarily in the catchment of the Barcoo River—82% of the total clearing occurring within this catchment.

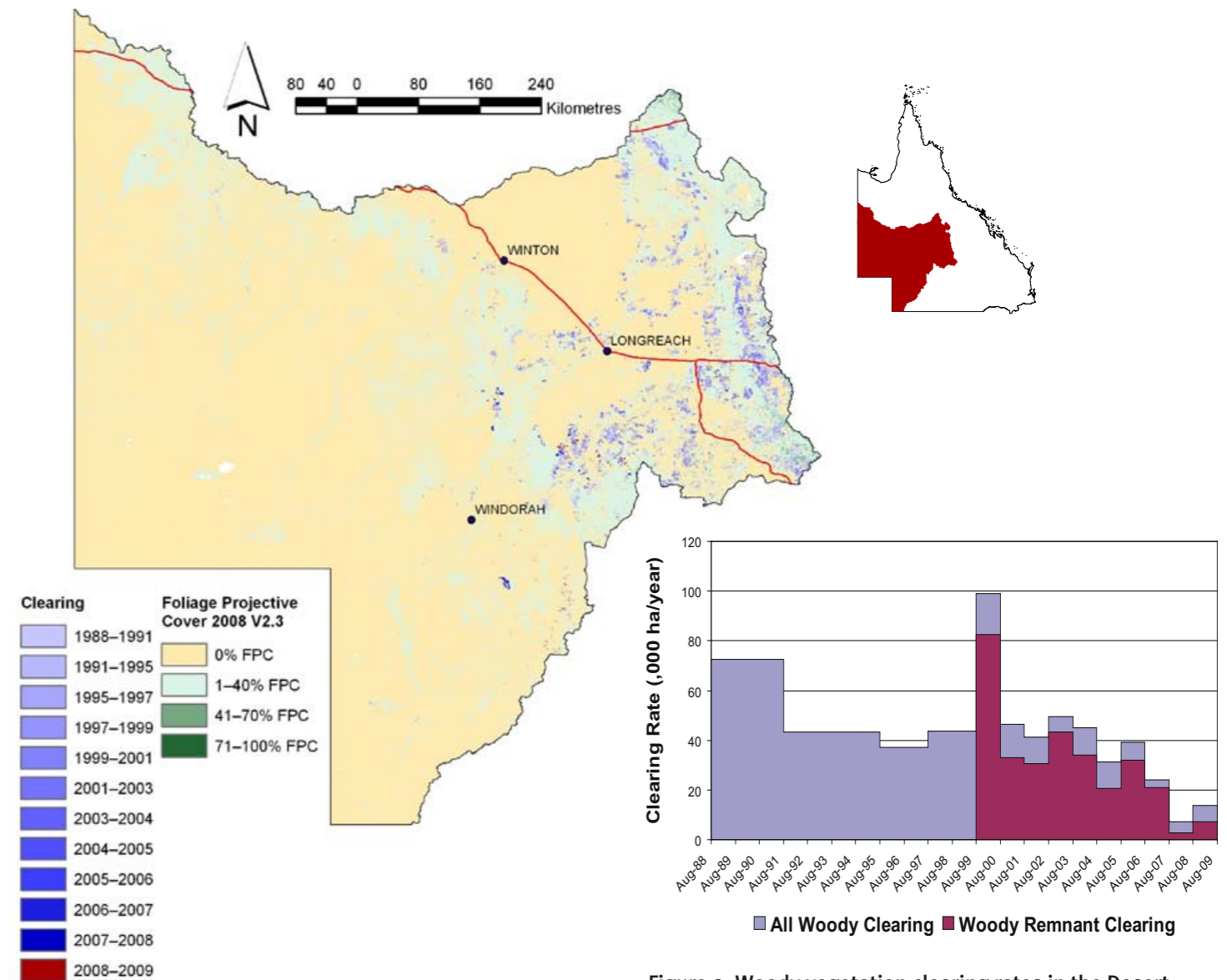


Figure 1. Woody vegetation clearing for each change period.

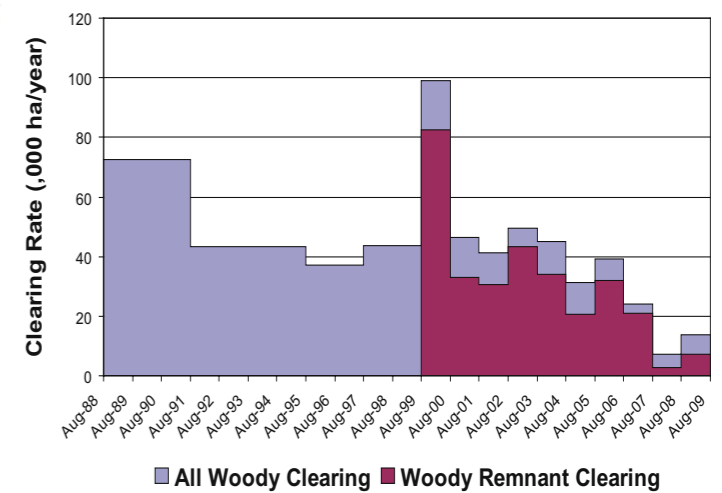


Figure 2. Woody vegetation clearing rates in the Desert Channels Queensland NRM region.

Woody vegetation clearing by remnant status

Table 1. Remnant and non-remnant woody vegetation clearing rates in the Desert Channels Queensland NRM region.

Period	Woody vegetation clearing rate (,oooha/yr) of			Period	Woody vegetation clearing rate (,oooha/yr) of		
	Non-remnant woody	Remnant woody*	Total woody		Non-remnant woody	Remnant woody*	Total woody
1999-00	16.623	82.450	99.073	2004-05	10.469	20.790	31.258
2000-01	13.717	32.868	46.585	2005-06	7.233	31.851	39.084
2001-02	10.552	30.758	41.310	2006-07	2.938	21.137	24.076
2002-03	6.507	43.161	49.668	2007-08	4.720	2.662	7.382
2003-04	11.137	33.903	45.040	2008-09	6.489	7.367	13.856

* Regional ecosystem remnant mapping prior to 1999 not used in this analysis.

Woody vegetation clearing by tenure

Table 2. Woody vegetation clearing rates in the Desert Channels Queensland NRM region by tenure.

Period	Woody vegetation clearing rate (,oooha/yr) on					Total
	Freehold	Leasehold	Reserves	Other tenures		
1988-91	24.281	48.312	0.046	0.018		72.658
1991-95	15.143	28.249	0.014	0.002		43.407
1995-97	15.999	21.170	0.068	0.004		37.240
1997-99	19.752	23.765	0.002	0.112		43.631
1999-00	69.674	29.372	0.004	0.023		99.073
2000-01	14.824	31.750	0.008	0.003		46.585
2001-02	20.923	20.351	0.036	0.000		41.310
2002-03	17.221	32.447	0.000	0.000		49.668
2003-04	20.096	24.920	0.015	0.000		45.030
2004-05	6.906	24.332	0.020	0.000		31.258
2005-06	10.555	28.512	0.017	0.000		39.084
2006-07	3.654	20.388	0.033	0.000		24.076
2007-08	1.569	5.813	0.000	0.000		7.382
2008-09	2.647	11.206	0.004	0.000		13.856

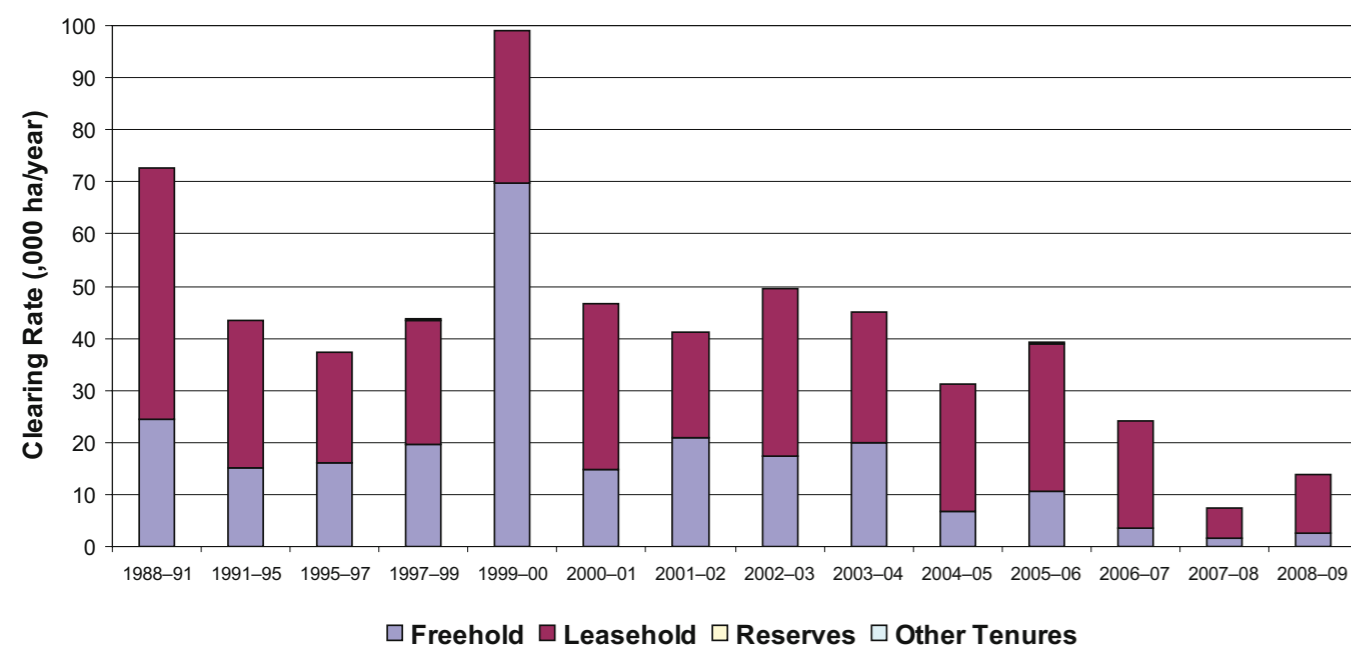


Figure 3. Woody vegetation clearing rates in the Desert Channels Queensland NRM region by tenure.

Woody vegetation clearing by subcatchment

Table 3. Woody vegetation clearing rates in the Desert Channels Queensland NRM region by subcatchment #.

Period	Woody vegetation clearing rate (,oooha/yr) for						
	Barcoo River	Cooper Creek	Diamantina River	Eyre Creek	Georgina River	Thomson River	Total
2006-07	7.371	7.159	0.131	0.017	0.227	9.171	24.076
2007-08	4.512	0.220	0.060	0.005	0.009	2.576	7.382
2008-09	11.362	0.622	0.012	0.004	0.095	1.761	13.856

Please refer to Figure 27 of the main report (DERM, 2010) for the location of each subcatchment.

Remaining woody vegetation

Table 4. Remaining woody vegetation in the Desert Channels Queensland NRM region by subcatchment.

	Barcoo River	Cooper Creek	Diamantina River	Eyre Creek	Georgina River	Hay	Thomson River	Total
Catchment area (,000 ha)	5323	9576	11917	7178	7208	277	9507	51000
Area woody 2008 V2.3 (,000 ha)	2426	1217	1561	506	1708	9	3112	10539
% of catchment woody in 2008	46	13	13	7	24	3	33	21

Note: Catchments with a low proportion of woody vegetation cover may contain significant areas of natural grasslands.

Woody vegetation clearing by replacement land cover

Table 5. Woody vegetation clearing rates in the Desert Channels Queensland NRM region by replacement land cover.

Period	Woody vegetation clearing rate (,oooha/yr) for						
	Pasture	Crop	Forestry	Mining	Infrastructure	Settlement	Total*
1988-91	71.644	0.000	0.000	0.004	1.011	0.000	72.658
1991-95	43.085	0.000	0.000	0.032	0.304	0.000	43.421
1995-97	36.578	0.000	0.000	0.006	0.650	0.007	37.241
1997-99	42.854	0.000	0.000	0.013	0.770	0.000	43.637
1999-00	98.048	0.000	0.000	0.002	1.023	0.000	99.073
2000-01	45.694	0.000	0.000	0.000	0.889	0.002	46.585
2001-02	41.259	0.000	0.000	0.000	0.051	0.000	41.310
2002-03	49.607	0.000	0.000	0.000	0.062	0.000	49.668
2003-04	44.571	0.000	0.000	0.040	0.429	0.000	45.040
2004-05	30.907	0.000	0.000	0.000	0.350	0.001	31.258
2005-06	38.988	0.000	0.000	0.001	0.095	0.000	39.084
2006-07	23.969	0.000	0.000	0.066	0.040	0.000	24.076
2007-08	7.243	0.000	0.000	0.009	0.130	0.000	7.382
2008-09	13.814	0.000	0.000	0.002	0.040	0.000	13.856

* total excludes natural tree death