

# Land cover change in the Condamine Alliance Natural Resource Management region

2008–09

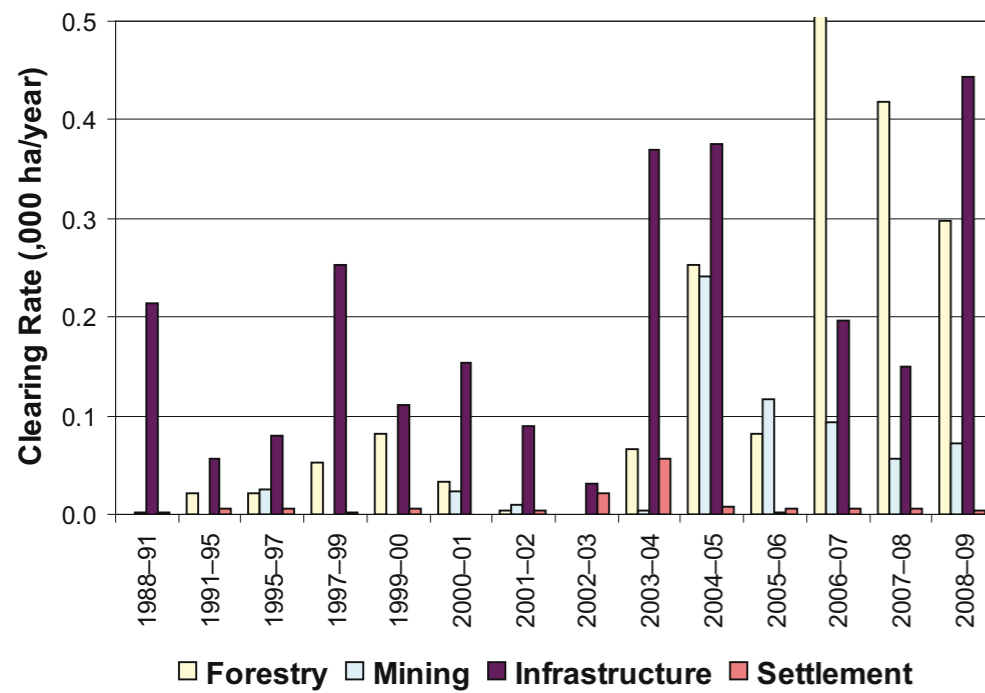
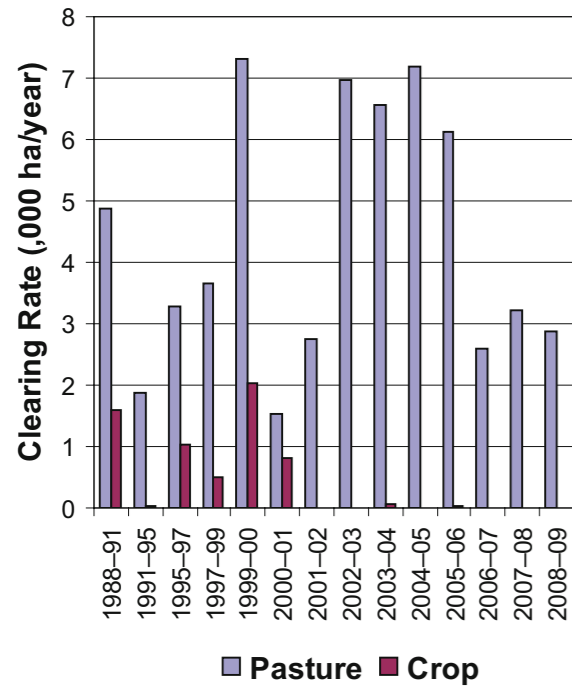


Figure 4. Woody vegetation clearing rates in the Condamine Alliance NRM region by replacement land cover.

This fact sheet is 3 of 13 in a series detailing land cover change in Queensland's Natural Resource Management Regions. These fact sheets are addenda to the report: Department of Environment and Resource Management (2010). *Land cover change in Queensland 2008–09: a Statewide Landcover and Trees Study (SLATS) Report, Oct 2010*. Department of Environment and Resource Management, Brisbane.

Please refer to this report for further background, methods and explanatory notes.

The Queensland Government supports and encourages the dissemination and exchange of information. However, copyright protects this document. The State of Queensland has no objection to this material being reproduced, made available online or electronically, provided it is for your personal, non-commercial use, or use within your organisation; the material remains unaltered; and the State of Queensland is recognised as the owner.

© The State of Queensland 2010.

For further information:  
 Statewide Landcover and Trees Study  
 41 Boggo Road  
 Dutton Park QLD 4102  
 Phone: 61 7 3170 5686  
 Email: productdelivery@derm.qld.gov.au

[www.derm.qld.gov.au](http://www.derm.qld.gov.au)

#29552

## Summary

In 2008–09, the woody vegetation clearing rate for the Condamine region was 3686 hectares per year (ha/year), which was similar to the previous era.

Clearing of remnant woody vegetation in the Condamine region decreased by 23% from the previous era, representing 32% of the total clearing in the region.

The dominant replacement land cover class continues to be pasture, which accounts for 78% of the total woody vegetation clearing in the region.

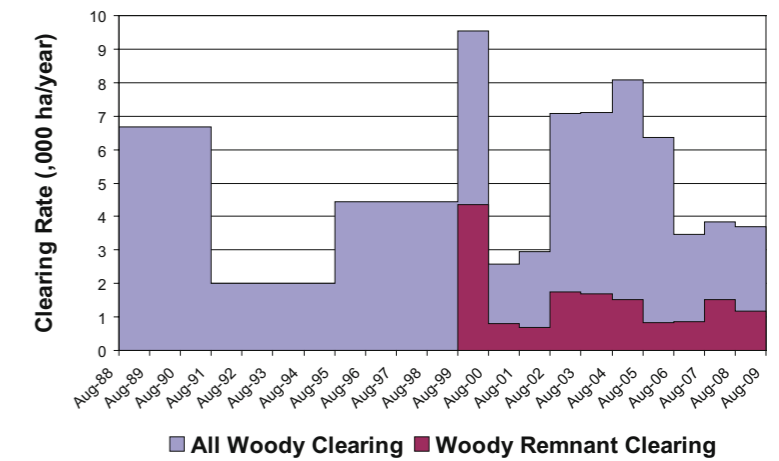


Figure 1. Woody vegetation clearing rates in the Condamine Alliance NRM region.

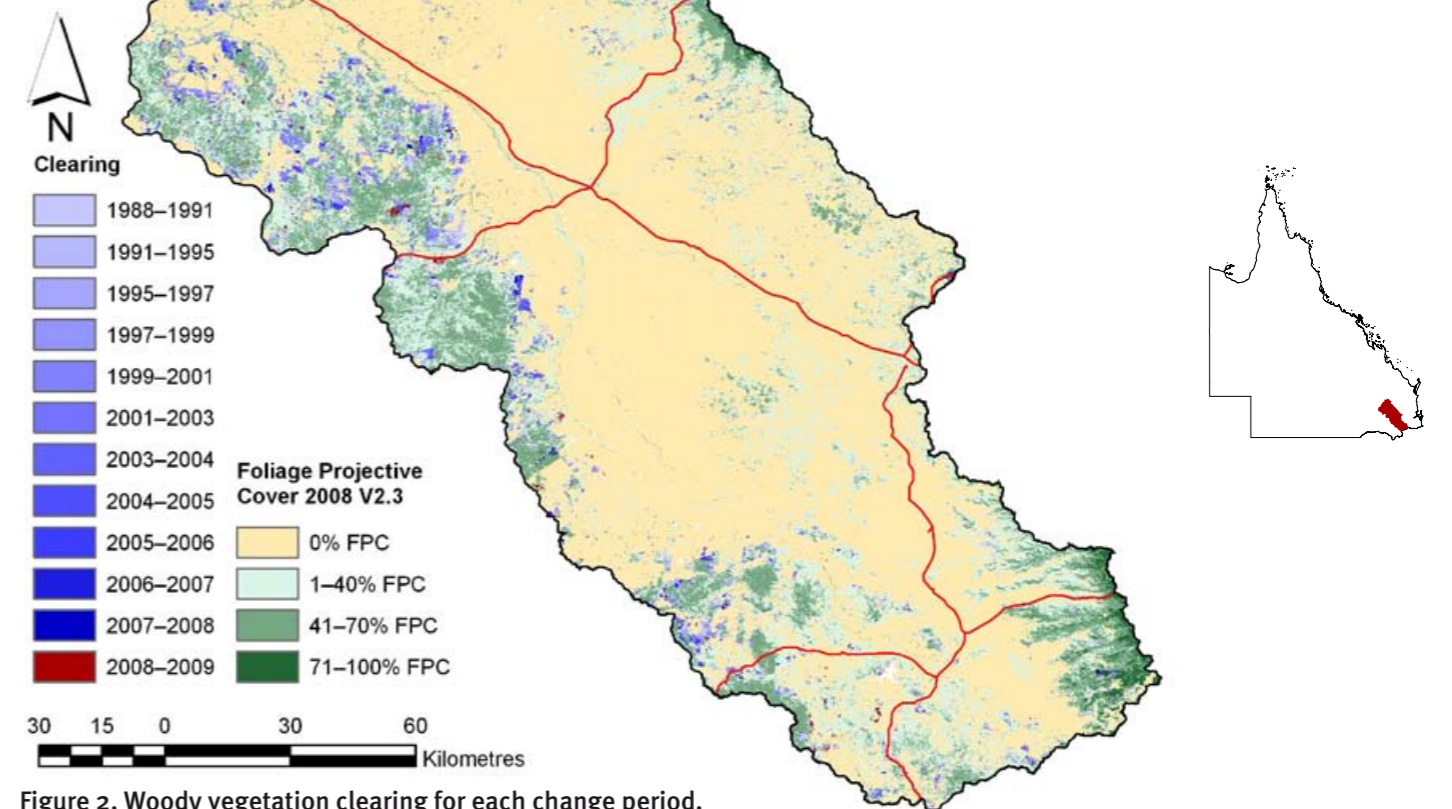


Figure 2. Woody vegetation clearing for each change period.

## Woody vegetation clearing by remnant status

Table 1. Remnant and non-remnant woody vegetation clearing rates in the Condamine Alliance Natural Resource Management region.

Period	Woody vegetation clearing rate (,000ha/yr) of			Period	Woody vegetation clearing rate (,000ha/yr) of		
	Non-remnant woody	Remnant woody*	Total woody		Non-remnant woody	Remnant woody*	Total woody
1999-00	5.191	4.356	9.547	2004-05	6.553	1.515	8.068
2000-01	1.765	0.810	2.576	2005-06	5.548	0.822	6.370
2001-02	2.241	0.702	2.943	2006-07	2.620	0.853	3.473
2002-03	5.329	1.758	7.087	2007-08	2.314	1.523	3.837
2003-04	5.391	1.701	7.092	2008-09	2.510	1.176	3.686

\* Regional ecosystem remnant mapping prior to 1999 not used in this analysis.

## Woody vegetation clearing by tenure

Table 2. Woody vegetation clearing rates in the Condamine Alliance NRM region by tenure.

Period	Woody vegetation clearing rate (,000ha/yr) on					Total
	Freehold	Leasehold	Reserves	Other tenures		
1988-91	6.119	0.464	0.086	0.006		6.675
1991-95	1.872	0.117	0.014	0.000		2.003
1995-97	4.214	0.183	0.028	0.003		4.428
1997-99	4.068	0.233	0.129	0.010		4.441
1999-00	9.338	0.129	0.080	0.000		9.547
2000-01	2.494	0.024	0.057	0.000		2.576
2001-02	2.716	0.128	0.094	0.000		2.938
2002-03	6.866	0.158	0.062	0.000		7.086
2003-04	6.875	0.149	0.068	0.000		7.092
2004-05	7.717	0.187	0.164	0.000		8.068
2005-06	5.994	0.296	0.079	0.000		6.369
2006-07	3.097	0.118	0.258	0.000		3.473
2007-08	3.297	0.144	0.397	0.000		3.837
2008-09	3.328	0.064	0.294	0.000		3.686

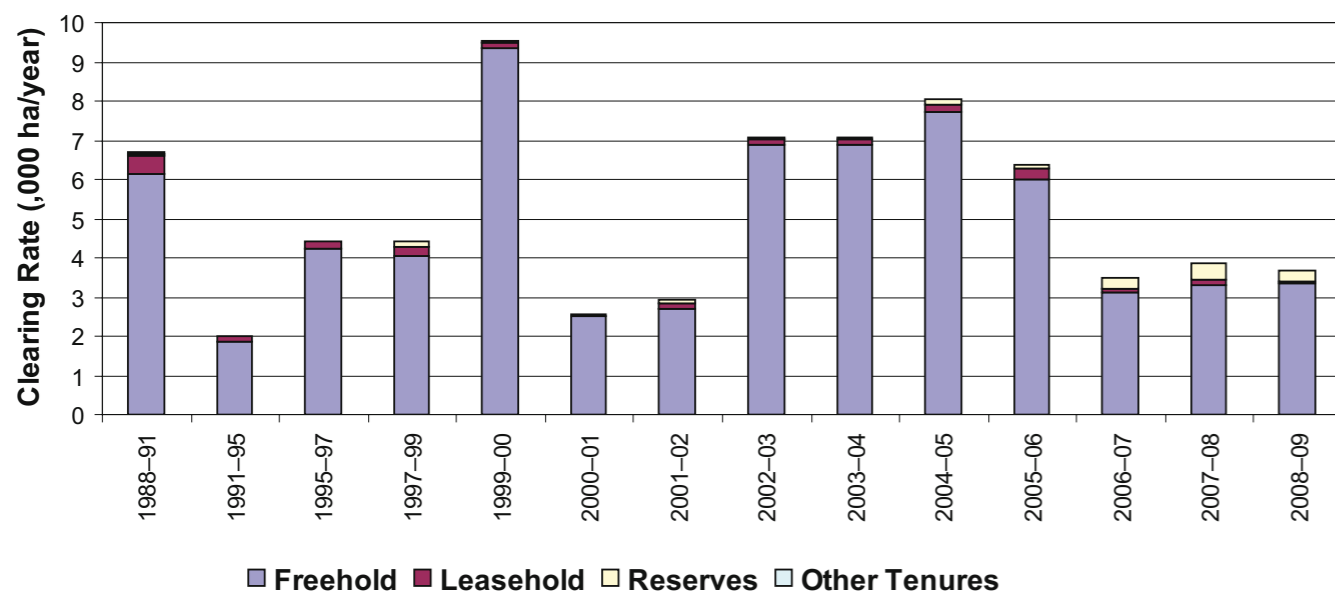


Figure 3. Woody vegetation clearing rates in the Condamine Alliance NRM region by tenure.

## Woody vegetation clearing by subcatchment

Table 3. Woody vegetation clearing rates in the Condamine Alliance NRM region by subcatchment.

Period	Clearing rate (,000ha/yr) for		
	Balonne River	Condamine River	Total
2006-07	0.001	3.471	3.473
2007-08	0.000	3.837	3.837
2008-09	0.159	3.527	3.686

# Please refer to Figure 27 of the main report (DERM, 2010) for the location of each subcatchment.

## Remaining woody vegetation

Table 4. Remaining woody vegetation in the Condamine Alliance NRM region by subcatchment.

	Balonne River	Condamine River	Total
Catchment area (,000 ha)	101	2443	2544
Area woody 2008 V2.3 (,000 ha)	81	944	1025
% of catchment woody in 2008	80	39	40

## Woody vegetation clearing by replacement land cover

Table 5. Woody vegetation clearing rates in the Condamine Alliance NRM region by replacement land cover.

Period	Woody vegetation clearing rate (,000ha/yr) for						
	Pasture	Crop	Forestry	Mining	Infrastructure	Settlement	Total*
1988-91	4.871	1.588	0.000	0.002	0.213	0.001	6.676
1991-95	1.888	0.029	0.022	0.001	0.057	0.006	2.004
1995-97	3.282	1.016	0.021	0.026	0.081	0.005	4.429
1997-99	3.650	0.485	0.053	0.000	0.252	0.001	4.441
1999-00	7.304	2.044	0.083	0.000	0.111	0.006	9.547
2000-01	1.535	0.828	0.034	0.024	0.154	0.001	2.576
2001-02	2.824	0.013	0.005	0.009	0.090	0.003	2.943
2002-03	7.033	0.000	0.000	0.000	0.032	0.022	7.087
2003-04	6.549	0.048	0.066	0.003	0.369	0.056	7.092
2004-05	7.184	0.007	0.253	0.242	0.375	0.008	8.068
2005-06	6.139	0.025	0.082	0.116	0.002	0.005	6.370
2006-07	2.607	0.000	0.567	0.094	0.197	0.006	3.473
2007-08	3.206	0.000	0.419	0.057	0.149	0.006	3.837
2008-09	2.868	0.002	0.297	0.072	0.443	0.004	3.686

\* total excludes natural tree death