

# Land cover change in the Burnett–Mary Regional Group Natural Resource Management region

2008–09

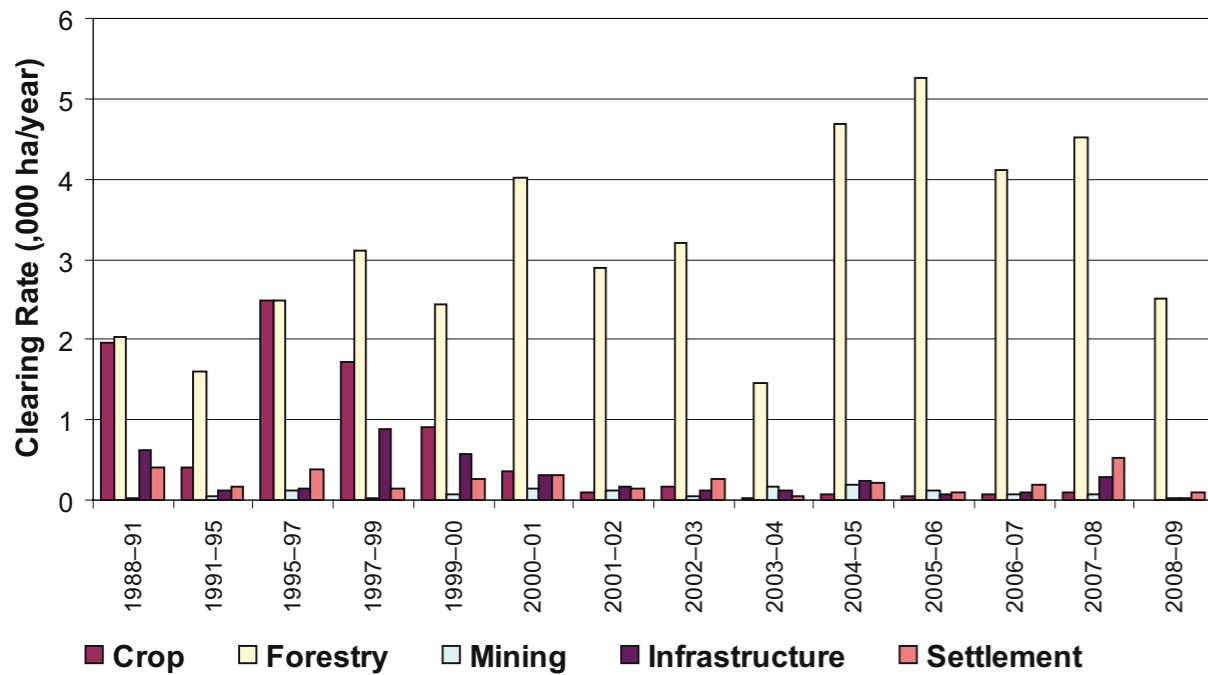
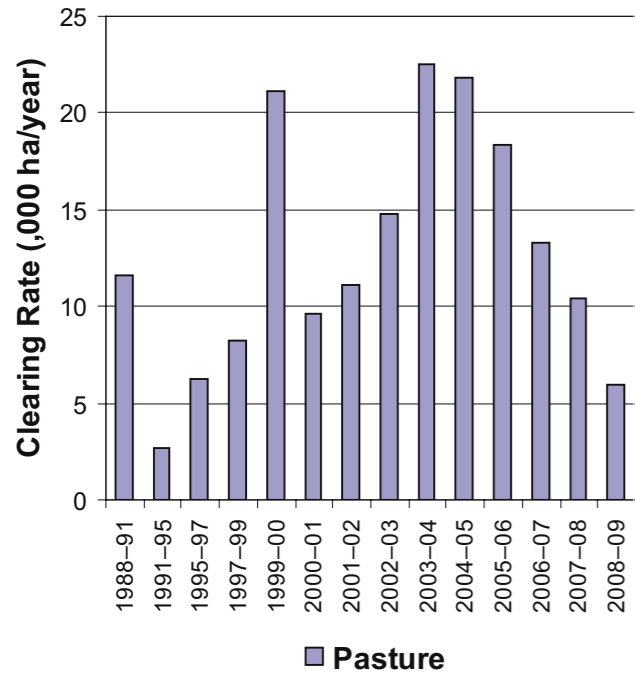


Figure 4. Woody vegetation clearing rates in the Burnett–Mary Regional Group NRM region by replacement land cover.

## Summary

In 2008–09, the woody vegetation clearing rate for the Burnett Mary Regional Group region was 8556 hectares per year (ha/year), which was 54% of that mapped in the previous era. The replacement land cover class of forestry represents 29% of the woody vegetation clearing detected.

Clearing of remnant woody vegetation in the region decreased by 50%, to 2003 ha/year.

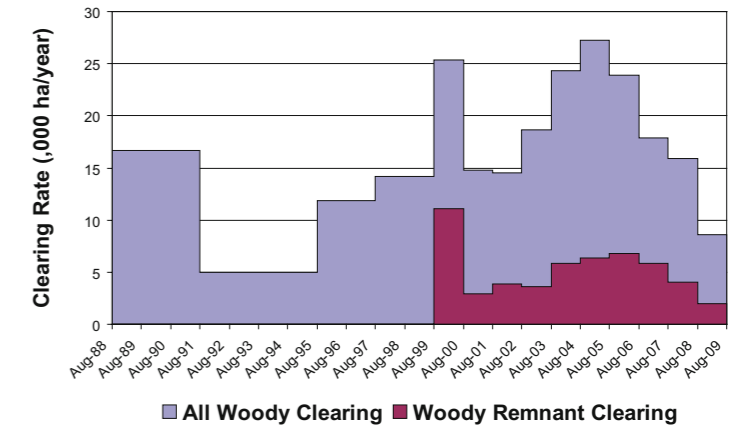


Figure 1. Woody vegetation clearing rates in the Burnett–Mary Regional Group NRM region.

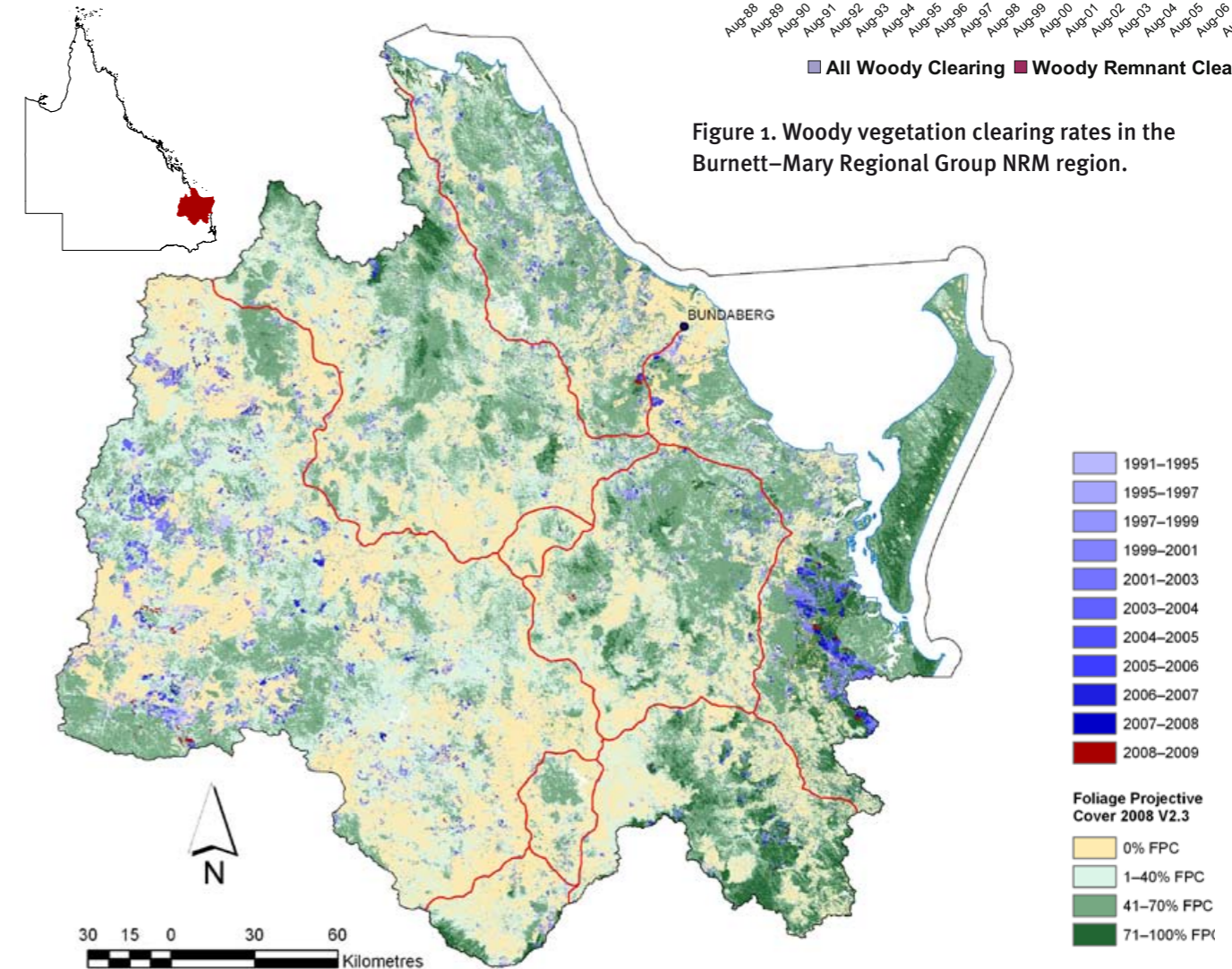


Figure 2. Woody vegetation clearing for each change period.

This fact sheet is 1 of 13 in a series detailing land cover change in Queensland's Natural Resource Management Regions. These fact sheets are addenda to the report: Department of Environment and Resource Management (2010). *Land cover change in Queensland 2008–09: a Statewide Landcover and Trees Study (SLATS) Report, Oct 2010*. Department of Environment and Resource Management, Brisbane.

Please refer to this report for further background, methods and explanatory notes.

The Queensland Government supports and encourages the dissemination and exchange of information. However, copyright protects this document. The State of Queensland has no objection to this material being reproduced, made available online or electronically, provided it is for your personal, non-commercial use, or use within your organisation; the material remains unaltered; and the State of Queensland is recognised as the owner.

© The State of Queensland 2010.

For further information:  
 Statewide Landcover and Trees Study  
 41 Boggo Road  
 Dutton Park QLD 4102  
 Phone: 61 7 3170 5686  
 Email: productdelivery@derm.qld.gov.au

[www.derm.qld.gov.au](http://www.derm.qld.gov.au)

## Woody vegetation clearing by remnant status

Table 1. Remnant and non-remnant woody vegetation clearing rates in the Burnett–Mary Regional Group NRM region.

Period	Woody vegetation clearing rate (,oooha/yr) of			Period	Woody vegetation clearing rate (,oooha/yr) of		
	Non-remnant woody	Remnant woody*	Total woody		Non-remnant woody	Remnant woody*	Total woody
1999–00	14.279	11.080	25.359	2004–05	20.886	6.346	27.231
2000–01	11.836	2.945	14.781	2005–06	17.093	6.830	23.923
2001–02	10.672	3.897	14.568	2006–07	12.028	5.830	17.857
2002–03	15.045	3.630	18.675	2007–08	11.870	4.011	15.880
2003–04	18.480	5.887	24.367	2008–09	6.553	2.003	8.556

\* Regional ecosystem remnant mapping prior to 1999 not used in this analysis.

## Woody vegetation clearing by tenure

Table 2. Woody vegetation clearing rates in the Burnett–Mary Regional Group NRM region by tenure.

Period	Woody vegetation clearing rate (,oooha/yr) on				
	Freehold	Leasehold	Reserves	Other tenures	Total
1988–91	12.787	1.469	2.387	0.030	16.674
1991–95	2.888	0.509	1.581	0.005	4.983
1995–97	8.959	0.400	2.454	0.008	11.822
1997–99	10.328	0.692	3.113	0.006	14.138
1999–00	21.350	1.435	2.569	0.006	25.359
2000–01	10.059	0.657	4.065	0.001	14.781
2001–02	10.246	1.425	2.897	0.000	14.568
2002–03	13.399	2.056	3.218	0.003	18.675
2003–04	18.442	1.980	3.940	0.005	24.366
2004–05	22.192	1.073	3.965	0.001	27.231
2005–06	18.837	0.778	4.307	0.000	23.922
2006–07	11.399	1.942	4.514	0.001	17.857
2007–08	10.472	0.977	4.432	0.000	15.880
2008–09	4.934	1.093	2.529	0.000	8.556

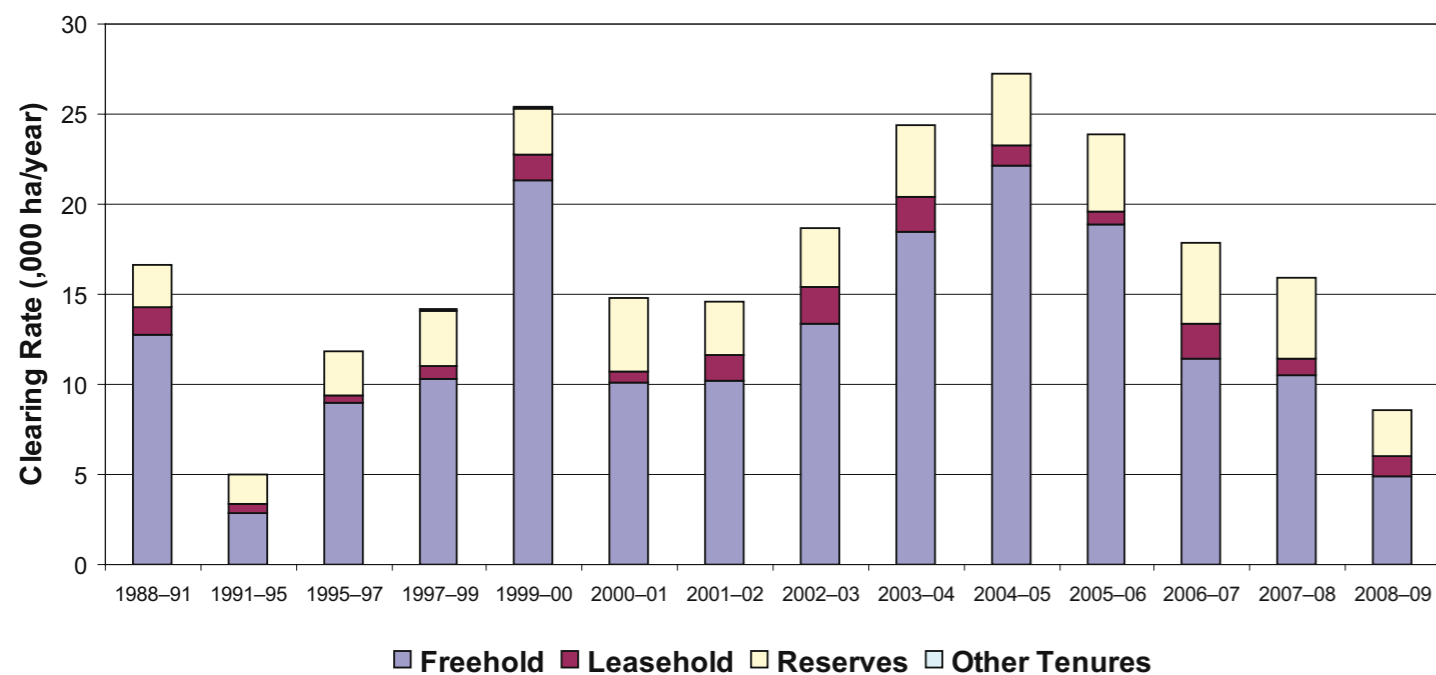


Figure 3. Woody vegetation clearing rates in the Burnett–Mary Regional Group NRM region by tenure.

Land cover change in the Burnett–Mary Regional Group NRM region

## Woody vegetation clearing by subcatchment

Table 3. Woody vegetation clearing rates in the Burnett–Mary Regional Group NRM region by subcatchment #.

Period	Woody vegetation clearing rate (,oooha/yr) for							
	Baffle Creek	Barker and Barambah Creek	Boyne and Auburn Rivers	Boyne River	Burrum River	Elliott River	Fraser Island	Gregory River
2006–07	1.762	0.596	5.322	0.176	0.617	0.292	0.006	0.404
2007–08	1.337	0.437	3.827	0.015	0.230	0.315	0.055	0.362
2008–09	0.754	0.533	2.365	0.005	0.080	0.549	0.003	0.128

Table 3. continued

Period	Woody vegetation clearing rate (,oooha/yr) for							
	Isis River	Kolan River	Lower Burnett River	Lower Mary River	Noosa River	Upper Burnett River	Upper Mary River	Total
2006–07	0.436	0.556	0.396	4.353	0.556	2.053	0.334	17.857
2007–08	0.152	0.683	0.960	3.658	1.565	1.913	0.370	15.880
2008–09	0.075	0.277	0.593	1.781	0.426	0.730	0.259	8.556

# Please refer to Figure 27 of the main report (DERM, 2010) for the location of each subcatchment.

## Remaining woody vegetation

Table 4. Remaining woody vegetation in the Burnett–Mary Regional Group NRM region by subcatchment.

	Baffle Creek	Barker and Barambah Creek	Boyne and Auburn Rivers	Boyne River	Burrum River	Elliott River	Fraser Island	Gregory River
Catchment area (,000 ha)	399	593	1299	9	121	71	166	91
Area woody 2008 V2.3 (,000 ha)	333	357	834	7	107	42	157	68
% of catchment woody in 2008	83	60	64	80	89	60	95	75

Table 4. continued

	Isis River	Kolan River	Lower Burnett River	Lower Mary River	Noosa River	Upper Burnett River	Upper Mary River	Total
Catchment area (,000 ha)	53	290	569	676	98	860	271	5574
Area woody 2008 V2.3 (,000 ha)	47	223	344	502	92	563	214	3898
% of catchment woody in 2008	88	77	60	74	93	65	79	70

## Woody vegetation clearing by replacement land cover

Table 5. Woody vegetation clearing rates in the Burnett–Mary Regional Group NRM region by replacement land cover.

Period	Woody vegetation clearing rate (,oooha/yr) for						
	Pasture	Crop	Forestry	Mining	Infrastructure	Settlement	Total*
1988–91	11.638	1.968	2.020	0.033	0.622	0.411	16.692
1991–95	2.647	0.402	1.597	0.054	0.124	0.161	4.986
1995–97	6.214	2.486	2.488	0.114	0.155	0.371	11.828
1997–99	8.278	1.719	3.111	0.030	0.876	0.132	14.145
1999–00	21.117	0.919	2.428	0.066	0.571	0.259	25.359
2000–01	9.622	0.364	4.007	0.144	0.322	0.322	14.781
2001–02	11.161	0.100	2.888	0.115	0.167	0.137	14.568
2002–03	14.884	0.162	3.199	0.051	0.128	0.252	18.675
2003–04	22.562	0.023	1.449	0.161	0.113	0.059	24.367
2004–05	21.866	0.063	4.676	0.186	0.230	0.211	27.231
2005–06	18.324	0.047	5.266	0.127	0.062	0.096	23.923
2006–07	13.317	0.068	4.105	0.067	0.099	0.201	17.857
2007–08	10.388	0.094	4.512	0.063	0.288	0.536	15.880
2008–09	5.924	0.010	2.501	0.014	0.016	0.092	8.556

\* total excludes natural tree death