

Land cover change in the North Queensland Dry Tropics Natural Resource Management region

2007-08

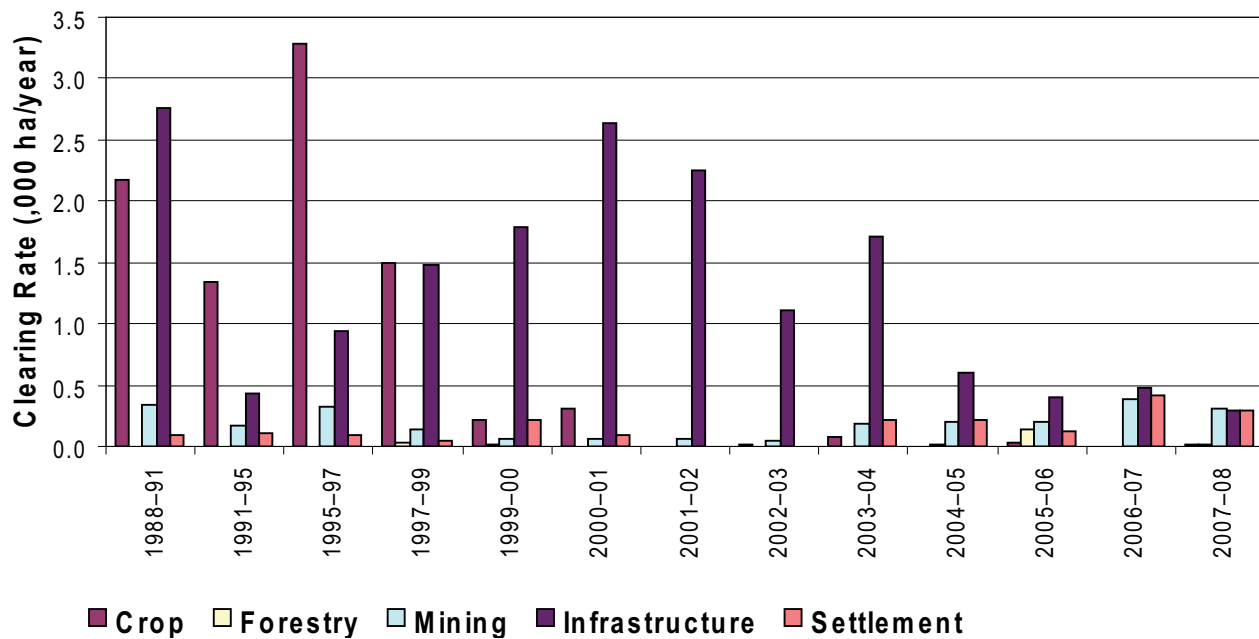
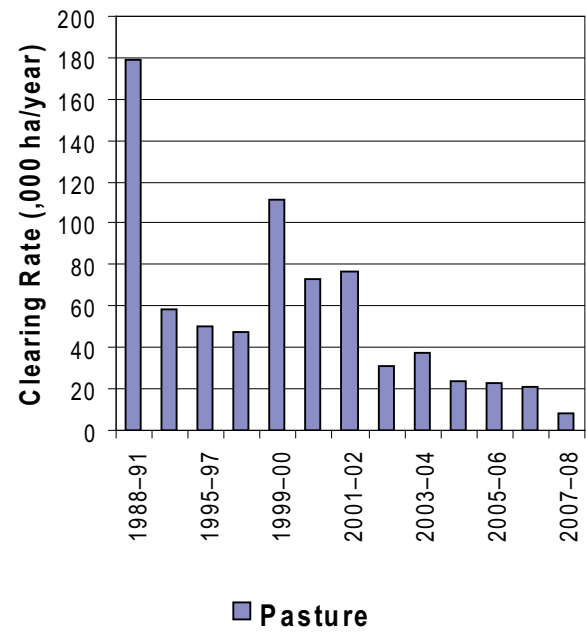


Figure 4. Woody vegetation clearing rates in the North Queensland Dry Tropics NRM region by replacement land cover.

This fact sheet is 7 of 13 in a series detailing land cover change in Queensland's Natural Resource Management regions. These fact sheets are addenda to the report: Department of Environment and Resource Management (2009). *Land cover change in Queensland 2007-08: a Statewide Landcover and Trees Study (SLATS) Report*, Oct. 2009. Department of Environment and Resource Management, Brisbane.

Please refer to this report for further background, methods and explanatory notes.

The Queensland Government supports and encourages the dissemination and exchange of information. However, copyright protects this document. The State of Queensland has no objection to this material being reproduced, made available online or electronically, provided it is for your personal, non-commercial use, or use within your organisation; the material remains unaltered; and the State of Queensland is recognised as the owner.

© The State of Queensland 2009.

For further information:
 Statewide Landcover and Trees Study
 80 Meiers Road
 Indooroopilly QLD 4068
 Phone: 61 7 3896 9605
 Email: nrsdatacoordinator@derm.qld.gov.au

www.derm.qld.gov.au

#28993

Summary

In 2007-08, the North Queensland Dry Tropics region recorded a woody vegetation clearing rate of 9545 hectares per year—the lowest in the region since satellite monitoring began. Clearing of remnant woody vegetation decreased by 69% from the previous year.

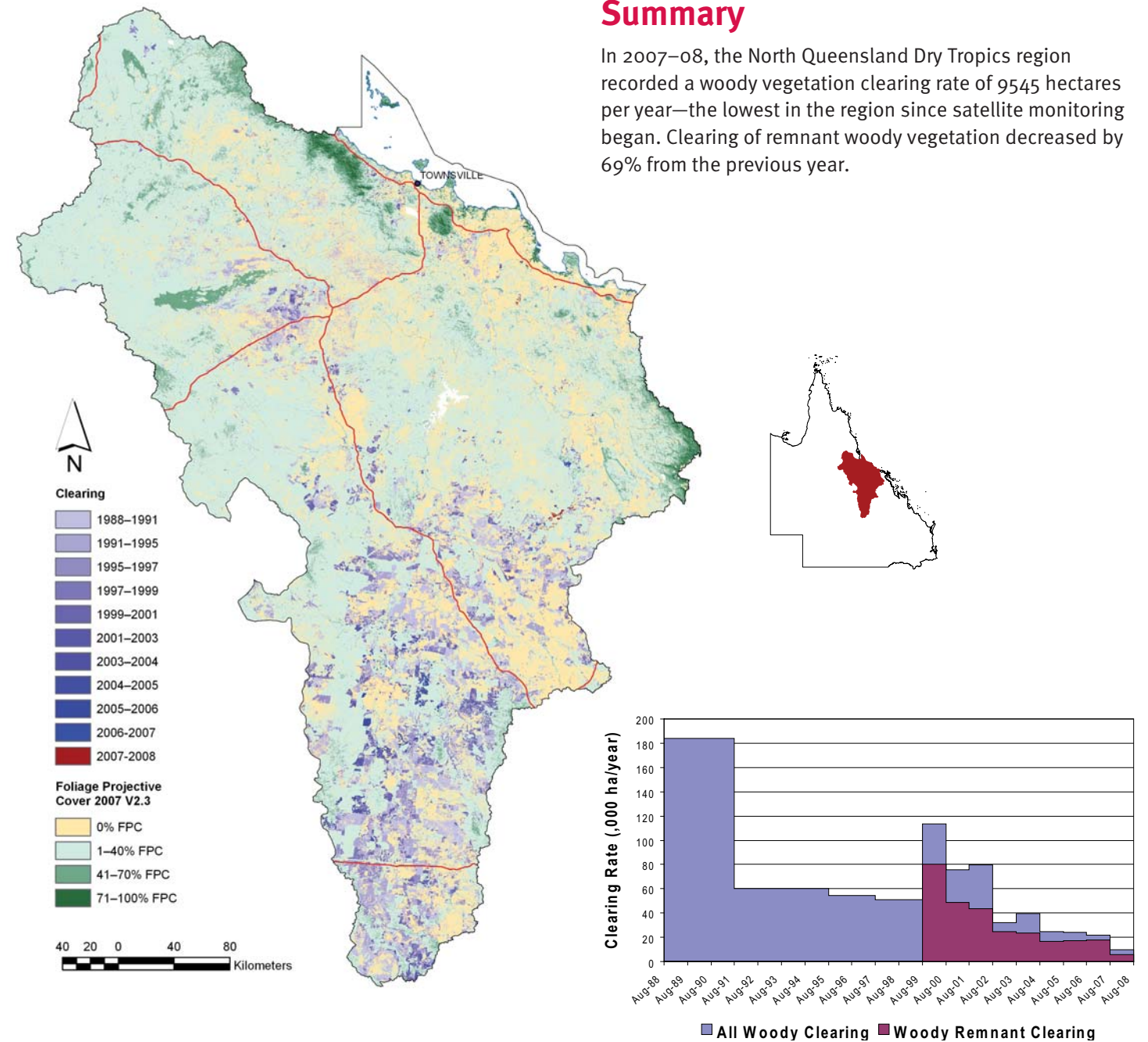


Figure 1. Woody vegetation clearing for each change period.

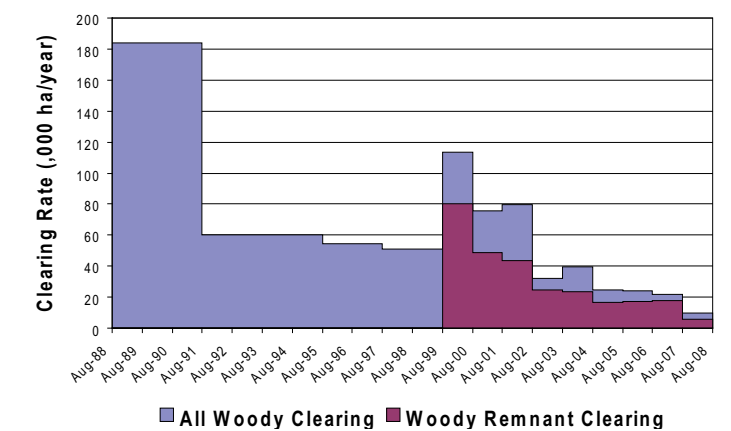


Figure 2. Woody vegetation clearing rates in the North Queensland Dry Tropics NRM region.

Woody vegetation clearing by remnant status

Table 1. Remnant and non-remnant woody vegetation clearing rates in the North Queensland Dry Tropics NRM region.

| Period | Woody vegetation clearing rate (,oooha/yr) of | | | Period | Woody vegetation clearing rate (,oooha/yr) of | | |
|---------|---|----------------|-------------|---------|---|----------------|-------------|
| | Non-remnant woody | Remnant woody* | Total woody | | Non-remnant woody | Remnant woody* | Total woody |
| 1999-00 | 33.557 | 80.086 | 113.642 | 2004-05 | 7.985 | 16.554 | 24.539 |
| 2000-01 | 26.807 | 48.933 | 75.739 | 2005-06 | 6.423 | 17.468 | 23.891 |
| 2001-02 | 35.783 | 43.840 | 79.622 | 2006-07 | 4.228 | 17.829 | 22.057 |
| 2002-03 | 7.821 | 24.523 | 32.344 | 2007-08 | 4.069 | 5.476 | 9.545 |
| 2003-04 | 16.091 | 23.679 | 39.770 | | | | |

* Regional ecosystem remnant mapping prior to 1999 not used in this analysis.

Woody vegetation clearing by tenure

Table 2. Woody vegetation clearing rates in the North Queensland Dry Tropics NRM region by tenure.

| Period | Woody vegetation clearing rate (,oooha/yr) on | | | | |
|---------|---|-----------|----------|---------------|---------|
| | Freehold | Leasehold | Reserves | Other tenures | Total |
| 1988-91 | 36.812 | 146.770 | 0.167 | 0.414 | 184.163 |
| 1991-95 | 12.932 | 47.020 | 0.015 | 0.087 | 60.054 |
| 1995-97 | 12.762 | 41.575 | 0.047 | 0.264 | 54.649 |
| 1997-99 | 10.722 | 39.573 | 0.023 | 0.765 | 51.082 |
| 1999-00 | 25.134 | 88.417 | 0.064 | 0.028 | 113.642 |
| 2000-01 | 5.860 | 69.865 | 0.008 | 0.006 | 75.739 |
| 2001-02 | 8.468 | 71.072 | 0.032 | 0.051 | 79.622 |
| 2002-03 | 3.440 | 28.887 | 0.010 | 0.006 | 32.344 |
| 2003-04 | 5.961 | 33.662 | 0.041 | 0.106 | 39.770 |
| 2004-05 | 3.619 | 20.867 | 0.052 | 0.001 | 24.539 |
| 2005-06 | 4.677 | 19.159 | 0.051 | 0.004 | 23.891 |
| 2006-07 | 3.325 | 18.710 | 0.017 | 0.005 | 22.057 |
| 2007-08 | 1.922 | 7.602 | 0.017 | 0.004 | 9.545 |

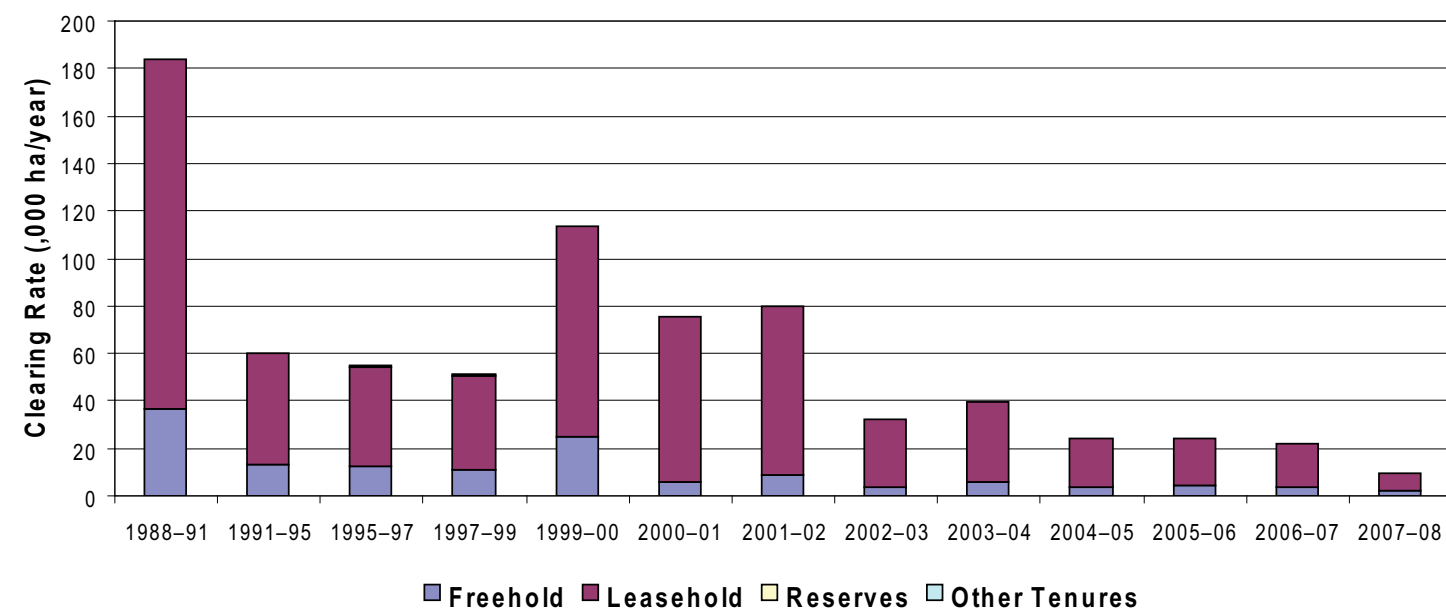


Figure 3. Woody vegetation clearing rates in the North Queensland Dry Tropics NRM region by tenure.

Woody vegetation clearing by subcatchment

Table 3. Woody vegetation clearing rates in the North Queensland Dry Tropics NRM region by subcatchment #.

| Period | Woody vegetation clearing rate (,oooha/yr) for | | | | |
|---------|--|-------------|-------------|-------------|-----------|
| | Barratta Creek | Black River | Bohle River | Bowen River | Don River |
| 2006-07 | 0.012 | 0.829 | 0.451 | 1.418 | 0.205 |
| 2007-08 | 0.049 | 0.339 | 0.355 | 0.405 | 0.319 |

Table 3. continued

| Period | Woody vegetation clearing rate (,oooha/yr) for | | | | | |
|---------|--|----------------------|------------|--------------|----------------------|--------|
| | Haghton River | Lower Burdekin River | Ross River | Suttor River | Upper Burdekin River | Total |
| 2006-07 | 0.298 | 0.837 | 0.139 | 16.457 | 1.411 | 22.057 |
| 2007-08 | 0.238 | 0.565 | 0.123 | 6.028 | 1.117 | 9.545 |

Please refer to Figure 26 of the main report (DERM, 2009) for the location of each subcatchment.

Remaining woody vegetation

Table 4. Remaining woody vegetation in the North Queensland Dry Tropics NRM region by subcatchment.

| | Barratta Creek | Black River | Bohle River | Bowen River | Don River |
|--------------------------------|----------------|-------------|-------------|-------------|-----------|
| Catchment area (,000 ha) | 183 | 106 | 37 | 945 | 369 |
| Area woody 2007 V2.3 (,000 ha) | 61 | 91 | 18 | 656 | 205 |
| % of catchment woody in 2007 | 33 | 86 | 49 | 69 | 55 |

Table 4. continued

| | Haghton River | Lower Burdekin River | Ross River | Suttor River | Upper Burdekin River | Total |
|--------------------------------|---------------|----------------------|------------|--------------|----------------------|-------|
| Catchment area (,000 ha) | 222 | 1047 | 134 | 7395 | 3625 | 14079 |
| Area woody 2007 V2.3 (,000 ha) | 133 | 610 | 86 | 4390 | 2925 | 9189 |
| % of catchment woody in 2007 | 60 | 58 | 64 | 59 | 81 | 65 |

Woody vegetation clearing by replacement land cover

Table 5. Woody vegetation clearing rates in the North Queensland Dry Tropics NRM region by replacement land cover.

| Period | Woody vegetation clearing rate (,oooha/yr) for | | | | | | |
|---------|--|-------|----------|--------|----------------|------------|---------|
| | Pasture | Crop | Forestry | Mining | Infrastructure | Settlement | Total* |
| 1988-91 | 178.877 | 2.170 | 0.000 | 0.335 | 2.756 | 0.091 | 184.229 |
| 1991-95 | 58.008 | 1.335 | 0.007 | 0.162 | 0.431 | 0.112 | 60.055 |
| 1995-97 | 50.011 | 3.288 | 0.001 | 0.321 | 0.941 | 0.096 | 54.658 |
| 1997-99 | 47.893 | 1.490 | 0.033 | 0.139 | 1.478 | 0.050 | 51.083 |
| 1999-00 | 111.344 | 0.218 | 0.009 | 0.059 | 1.791 | 0.221 | 113.642 |
| 2000-01 | 72.627 | 0.309 | 0.004 | 0.067 | 2.636 | 0.096 | 75.739 |
| 2001-02 | 77.296 | 0.002 | 0.000 | 0.065 | 2.256 | 0.002 | 79.622 |
| 2002-03 | 31.159 | 0.019 | 0.000 | 0.053 | 1.113 | 0.000 | 32.344 |
| 2003-04 | 37.590 | 0.080 | 0.000 | 0.182 | 1.704 | 0.214 | 39.770 |
| 2004-05 | 23.506 | 0.000 | 0.019 | 0.193 | 0.598 | 0.223 | 24.539 |
| 2005-06 | 22.982 | 0.033 | 0.140 | 0.208 | 0.407 | 0.120 | 23.891 |
| 2006-07 | 20.770 | 0.002 | 0.000 | 0.384 | 0.482 | 0.419 | 22.057 |
| 2007-08 | 8.630 | 0.016 | 0.008 | 0.303 | 0.300 | 0.288 | 9.545 |

* total excludes natural tree death