

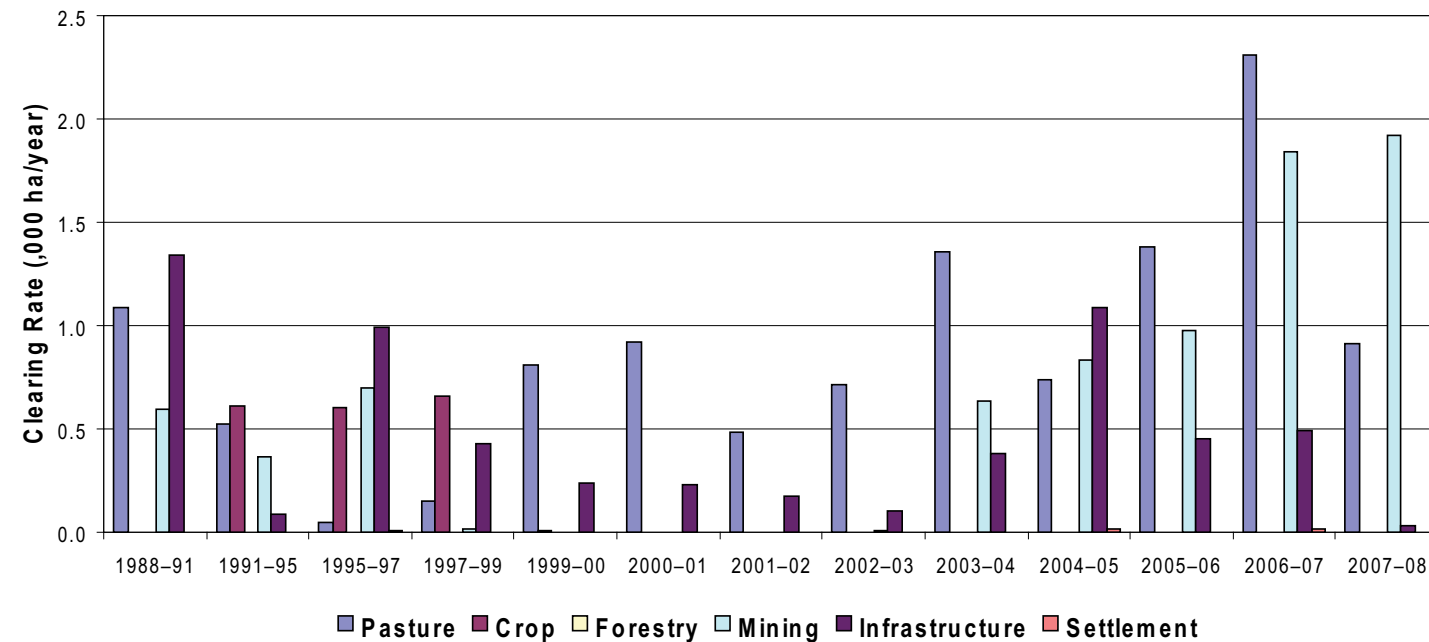
Woody vegetation clearing by replacement land cover

Table 5. Woody vegetation clearing rates in the Cape York NRM region by replacement land cover.

Period	Woody vegetation clearing rate (.000ha/yr) for						Total*
	Pasture	Crop	Forestry	Mining	Infrastructure	Settlement	
1988-91	1.090	0.000	0.000	0.597	1.339	0.002	3.027
1991-95	0.520	0.608	0.000	0.368	0.089	0.001	1.587
1995-97	0.044	0.599	0.000	0.697	0.991	0.007	2.338
1997-99	0.154	0.655	0.000	0.018	0.431	0.002	1.260
1999-00	0.810	0.004	0.002	0.000	0.235	0.003	1.055
2000-01	0.918	0.000	0.000	0.000	0.229	0.000	1.147
2001-02	0.488	0.000	0.000	0.000	0.176	0.003	0.666
2002-03	0.718	0.000	0.000	0.005	0.105	0.000	0.828
2003-04	1.360	0.000	0.000	0.634	0.379	0.003	2.376
2004-05	0.735	0.000	0.000	0.833	1.086	0.012	2.666
2005-06	1.382	0.000	0.000	0.979	0.450	0.003	2.814
2006-07	2.309	0.000	0.000	1.841	0.491	0.015	4.656
2007-08	0.915	0.000	0.000	1.918	0.033	0.004	2.870

* total excludes natural tree death

Figure 4. Woody vegetation clearing rates in the Cape York NRM region by replacement land cover.



This fact sheet is 2 of 13 in a series detailing land cover change in Queensland's Natural Resource Management regions. These fact sheets are addenda to the report: Department of Environment and Resource Management (2009). *Land cover change in Queensland 2007-08: a Statewide Landcover and Trees Study (SLATS) Report*, Oct. 2009. Department of Environment and Resource Management, Brisbane.

Please refer to this report for further background, methods and explanatory notes.

The Queensland Government supports and encourages the dissemination and exchange of information. However, copyright protects this document. The State of Queensland has no objection to this material being reproduced, made available online or electronically, provided it is for your personal, non-commercial use, or use within your organisation; the material remains unaltered; and the State of Queensland is recognised as the owner.

© The State of Queensland 2009.

For further information:
Statewide Landcover and Trees Study
80 Meiers Road
Indooroopilly QLD 4068
Phone: 61 7 3896 9605
Email: nrsdatacoordinator@derm.qld.gov.au

www.derm.qld.gov.au

#28993

Land cover change in the Cape York Natural Resource Management region

2007-08

Summary

The 2007-08 period saw a 39% decrease in woody remnant clearing within the Cape York region. The replacement land-cover class of mining accounts for 67% of all woody vegetation clearing within the region.

The woody vegetation clearing rate for 2007-08 was 2870 hectares per year.

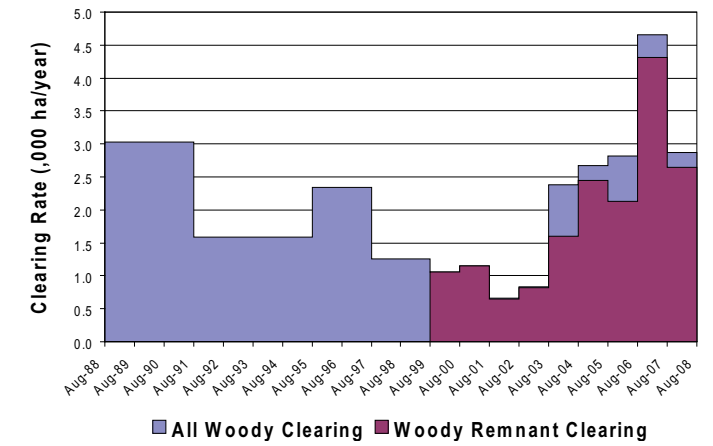


Figure 1. Woody vegetation clearing rates in the Cape York NRM region.

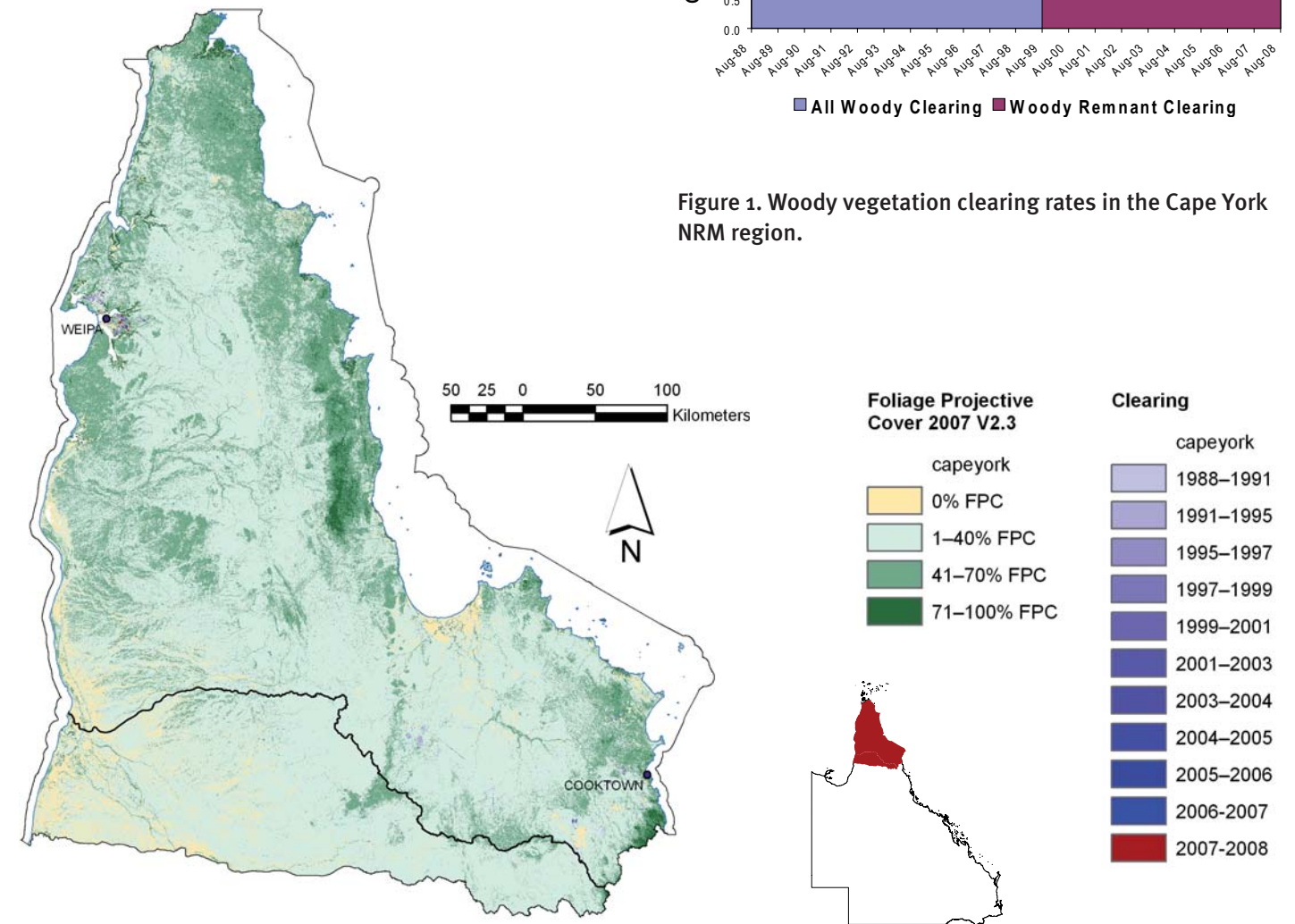


Figure 2. Woody vegetation clearing for each change period.

Note that the Cape York Natural Resource Management region overlaps the Northern Gulf Natural Resource Management region.

Woody vegetation clearing by remnant status

Table 1. Remnant and Non-remnant woody vegetation clearing Rates in the Cape York NRM region.

Period	Woody vegetation clearing rate (,oooha/yr) of			Period	Woody vegetation clearing rate (,oooha/yr) of		
	Non-remnant woody	Remnant woody*	Total woody		Non-remnant woody	Remnant woody*	Total woody
1999-00	0.002	1.053	1.055	2004-05	0.218	2.448	2.666
2000-01	0.000	1.147	1.147	2005-06	0.682	2.133	2.814
2001-02	0.012	0.654	0.666	2006-07	0.337	4.319	4.656
2002-03	0.013	0.816	0.828	2007-08	0.220	2.649	2.870
2003-04	0.778	1.598	2.376				

* Regional ecosystem remnant mapping prior to 1999 not used in this analysis.

Woody vegetation clearing by tenure

Table 2. Woody vegetation clearing rates in the Cape York NRM region by tenure.

Period	Woody vegetation clearing rate (,oooha/yr) on				
	Freehold	Leasehold	Reserves	Other tenures	Total
1988-91	0.408	1.528	0.073	1.018	3.027
1991-95	0.282	1.061	0.005	0.284	1.632
1995-97	0.525	0.888	0.034	0.892	2.339
1997-99	0.105	0.484	0.016	0.654	1.259
1999-00	0.181	0.214	0.002	0.658	1.055
2000-01	0.134	0.323	0.009	0.682	1.147
2001-02	0.168	0.480	0.002	0.016	0.666
2002-03	0.190	0.444	0.030	0.164	0.828
2003-04	0.888	0.659	0.072	0.756	2.375
2004-05	0.428	1.380	0.043	0.814	2.665
2005-06	0.139	1.595	0.066	1.015	2.814
2006-07	0.148	2.442	0.121	1.944	4.656
2007-08	0.023	0.942	0.008	1.896	2.870

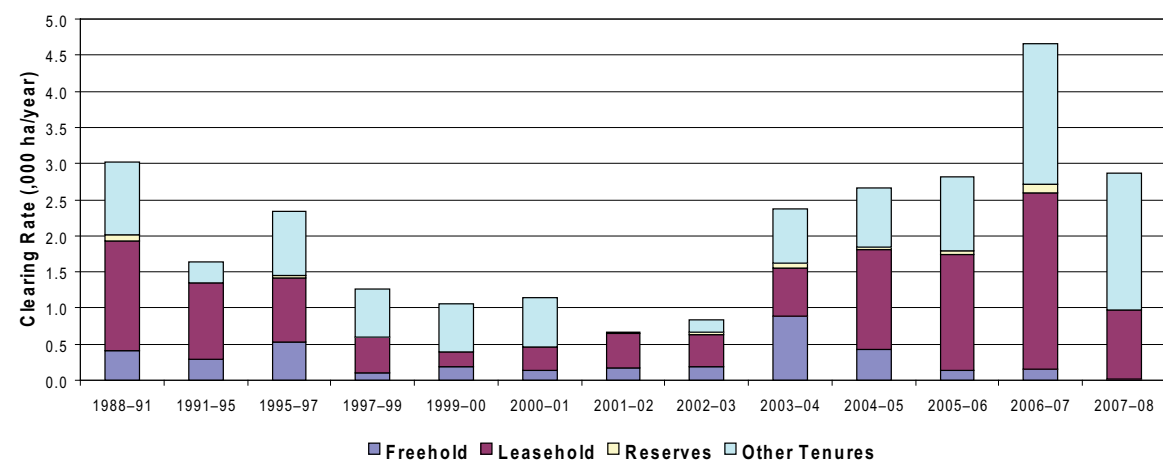


Figure 3. Woody vegetation clearing rates in the Cape York NRM region by tenure.

Woody vegetation clearing by subcatchment

Table 3. Woody vegetation clearing rates in the Cape York NRM region by subcatchment #.

Period	Woody vegetation clearing rate (,oooha/yr) for											
	Alice River	Archer River	Coen River	Coleman River	Ducie River	Edward River	Embley River	Endeavour River	Hann River	Holroyd River	Jardine River	Kendall River
2006-07	0.056	0.106	0.095	0.554	0.030	0.134	0.127	0.116	0.266	0.106	0.105	0.120
2007-08	0.033	0.121	0.149	0.165	0.104	0.040	0.455	0.000	0.040	0.069	0.011	0.011

Table 3. continued

Period	Woody vegetation clearing rate (,oooha/yr) for											
	Lockhart River	Mission River	Mitchell River	Normanby River	Olive River	Palmer River	Pascoe River	Skardon River	Stewart River	Watson River	Wenlock River	Total
2006-07	0.044	1.605	0.212	0.443	0.000	0.032	0.016	0.000	0.097	0.262	0.132	4.656
2007-08	0.003	1.369	0.040	0.025	0.024	0.046	0.002	0.000	0.000	0.153	0.009	2.870

*includes overlap area

Please refer to Figure 26 of the main report (DERM, 2009) for the location of each subcatchment.

Remaining woody vegetation

Table 4. Remaining woody vegetation in the Cape York NRM region by subcatchment.

	Alice River	Archer River	Coen River	Coleman River	Ducie River	Edward River	Embley River	Endeavour River	Hann River	Holroyd River	Jacky Jacky Creek	Jardine River	Jeanine River
Catchment area (,000)	1294	1061	321	534	358	752	192	210	956	544	296	328	363
Area woody 2007 V2.3 (,000 ha)	1169	1019	317	500	352	642	186	204	882	530	286	320	345
% of attachment woody in 2007	90	96	99	94	98	85	97	97	92	98	97	98	95

Table 4. continued

	Kendall River	Lockhart River	McDonald River	Mission River	Mitchell River	Normanby River	Olive River	Palmer River	Pascoe River	Skardon River	Stewart River	Watson River	Wenlock River	Total
Catchment area (,000)	485	288	271	268	861	1485	205	811	212	44	274	468	752	13643
Area woody 2007 V2.3 (,000 ha)	482	282	264	253	615	1426	202	786	211	41	267	461	743	12794
% of attachment woody in 2007	99	98	98	94	71	96	98	97	100	94	97	99	99	94