

QUEENSLAND

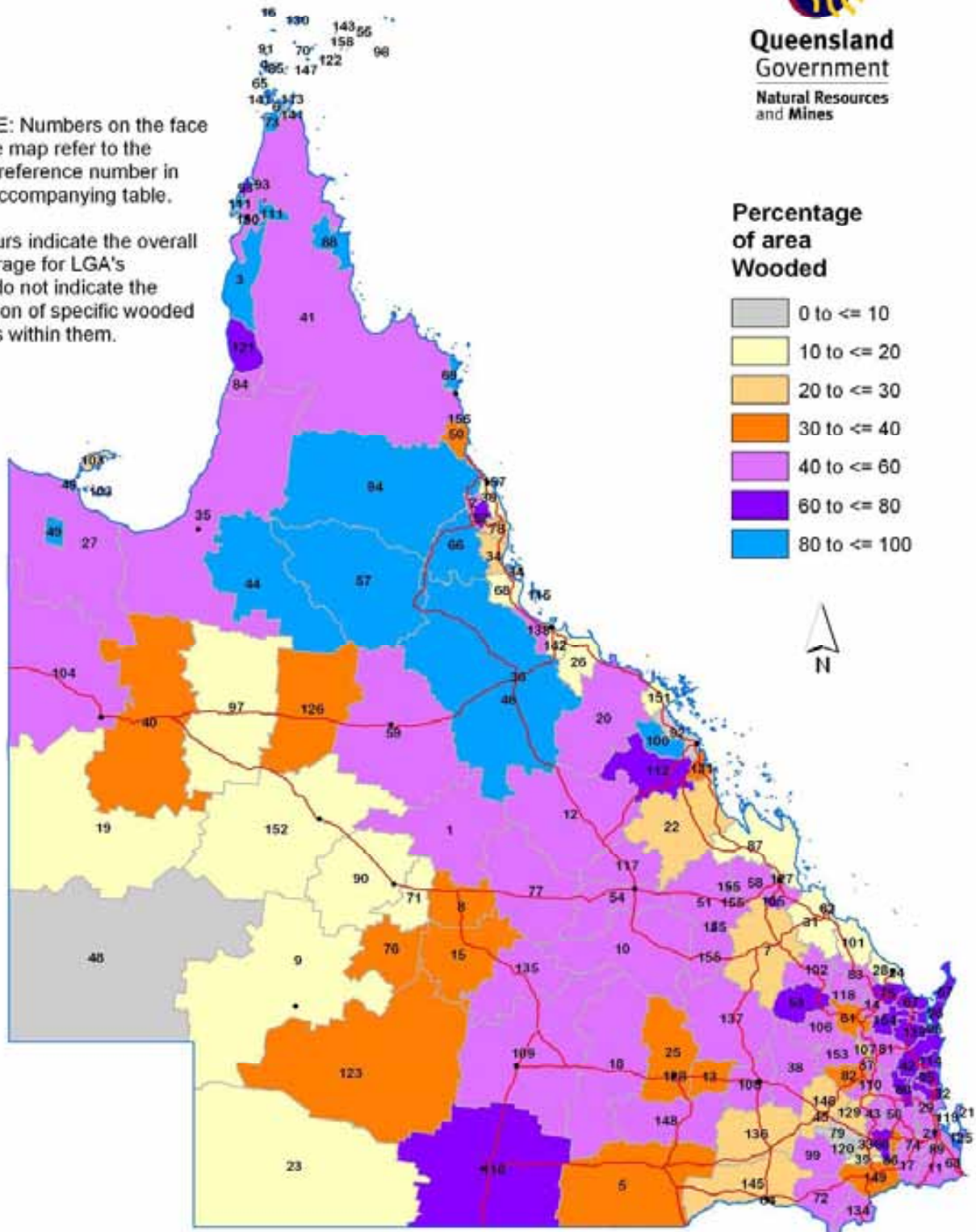
PERCENTAGE of AREA WOODDED by LOCAL GOVERNMENT AREA 2003



Queensland
Government
Natural Resources
and Mines

NOTE: Numbers on the face of the map refer to the LGA reference number in the accompanying table.

Colours indicate the overall coverage for LGA's and do not indicate the location of specific wooded areas within them.



LOCAL GOVERNMENT AREA

© The State of Queensland (Department of Natural Resources and Mines) 2005.

Figure 27: Percentage of area wooded by Local Government Area (2003).

Table 15: Woody vegetation change by land cover by Local Government Area (2003–2004).

Local Government Area			Rate of woody vegetation clearing (,000ha/yr) for							% Wooded vegetation cover 2003 ¹	% Total clearing in QLD
Name	Map Ref. No.	Total area (,000ha)	Pasture	Crops	Forest	Mining	Infra-structure	Settle-ment	Total		
Aramac	1	2328	2.349	0.000	0.000	0.000	0.112	0.000	2.462	40.31	0.51
Atherton	2	62	0.022	0.000	0.038	0.000	0.000	0.002	0.063	52.34	0.01
Aurukun	3	737	0.053	0.000	0.000	0.000	0.001	0.000	0.054	87.31	0.01
Badu Island	4	10	0.000	0.000	0.000	0.000	0.000	0.000	0.000	0.00	0.00
Balonne	5	3108	32.776	0.008	0.000	0.000	0.037	0.001	32.823	32.72	6.80
Bamaga Island	6	7	0.000	0.000	0.000	0.000	0.001	0.000	0.001	95.43	0.00
Banana	7	1572	4.294	0.043	0.000	0.093	0.006	0.000	4.435	29.62	0.92
Barcaldine	8	842	8.470	0.000	0.000	0.000	0.069	0.000	8.539	32.76	1.77
Barcoo	9	6181	1.015	0.000	0.000	0.000	0.000	0.000	1.015	15.60	0.21
Bauhinia	10	2361	10.867	0.000	0.000	0.040	0.270	0.000	11.176	50.83	2.32
Beaudesert	11	285	0.270	0.000	0.000	0.000	0.006	0.361	0.636	52.97	0.13
Belyando	12	3019	11.507	0.007	0.000	0.202	0.450	0.012	12.177	48.92	2.52
Bendemere	13	392	3.835	0.000	0.000	0.000	0.015	0.000	3.850	38.12	0.80
Biggenden	14	131	0.340	0.000	0.000	0.000	0.000	0.000	0.340	45.94	0.07
Blackall	15	1633	5.171	0.000	0.000	0.000	0.007	0.000	5.178	31.50	1.07
Boigu Island	16	7	0.000	0.000	0.000	0.000	0.000	0.000	0.000	0.00	0.00
Boonah	17	192	0.056	0.000	0.000	0.000	0.000	0.000	0.056	40.20	0.01
Booringa	18	2777	60.961	0.000	0.000	0.000	0.043	0.000	61.004	58.41	12.65
Boulia	19	6090	0.011	0.000	0.000	0.000	0.021	0.000	0.032	10.60	0.01
Bowen	20	2114	6.636	0.004	0.000	0.166	0.139	0.005	6.949	48.60	1.44
Brisbane	21	135	0.081	0.000	0.000	0.004	0.015	0.290	0.390	53.15	0.08
Broadsound	22	1852	13.625	0.004	0.000	0.451	0.662	0.001	14.744	20.86	3.06
Bulloo	23	7365	1.293	0.000	0.000	0.000	0.000	0.000	1.293	12.16	0.27
Bundaberg	24	9	0.118	0.000	0.000	0.000	0.000	0.000	0.118	19.22	0.02
Bungil	25	1332	9.139	0.000	0.000	0.000	0.031	0.000	9.170	32.11	1.90
Burdekin	26	503	0.035	0.001	0.000	0.000	0.167	0.001	0.203	16.23	0.04

¹ Based on the 1991 landcover baseline. Figures based on the new Woody FPC, which better account for regrowth, will be given in future reports.

Table 15 (continued): Woody vegetation change by land cover by Local Government Area (2003–2004).

Local Government Area			Rate of woody vegetation clearing (,000ha/yr) for							% Wooded vegetation cover 2003 ¹	% Total clearing in QLD
Name	Map Ref. No.	Total area (,000ha)	Pasture	Crops	Forest	Mining	Infra-structure	Settle-ment	Total		
Burke	27	3998	0.283	0.000	0.000	0.050	0.048	0.000	0.381	59.48	0.08
Burnett	28	200	0.681	0.000	0.000	0.000	0.000	0.000	0.681	19.15	0.14
Caboolture	29	125	0.358	0.001	0.346	0.002	0.040	0.600	1.346	51.44	0.28
Cairns	30	169	0.012	0.000	0.000	0.000	0.001	0.041	0.054	18.22	0.01
Calliope	31	662	1.129	0.000	0.000	0.170	0.000	0.012	1.311	19.83	0.27
Caloundra	32	113	0.146	0.000	0.756	0.000	0.011	0.133	1.047	63.26	0.22
Cambooya	33	64	0.009	0.000	0.000	0.000	0.001	0.000	0.010	27.27	0.00
Cardwell	34	306	0.044	0.000	0.325	0.000	0.000	0.007	0.376	21.34	0.08
Carpentaria	35	6414	0.163	0.000	0.000	0.000	0.401	0.000	0.564	51.31	0.12
Charters Towers	36	4	0.001	0.000	0.000	0.000	0.000	0.001	0.001	40.82	0.00
Cherbourg	37	3	0.000	0.000	0.000	0.000	0.001	0.000	0.001	73.25	0.00
Chinchilla	38	869	3.900	0.007	0.000	0.000	0.139	0.010	4.056	54.38	0.84
Clifton	39	87	0.143	0.000	0.000	0.000	0.008	0.000	0.150	15.75	0.03
Cloncurry	40	4799	0.047	0.000	0.000	0.040	0.026	0.000	0.113	33.12	0.02
Cook	41	10587	1.284	0.000	0.000	0.634	0.283	0.001	2.202	54.58	0.46
Cooloola	42	300	0.635	0.000	1.163	0.004	0.001	0.000	1.802	67.49	0.37
Crows Nest	43	163	0.286	0.000	0.126	0.000	0.016	0.003	0.431	42.63	0.09
Croydon	44	2948	0.491	0.000	0.000	0.000	0.057	0.000	0.548	91.70	0.11
Dalby	45	5	0.000	0.000	0.000	0.000	0.000	0.000	0.000	6.75	0.00
Dalrymple	46	6811	4.717	0.076	0.000	0.002	0.760	0.006	5.561	82.86	1.15
Dauan Island	47	0	0.000	0.000	0.000	0.000	0.000	0.000	0.000	0.00	0.00
Diamantina	48	9462	0.000	0.000	0.000	0.000	0.000	0.000	0.000	2.96	0.00
Doomadgee	49	185	0.001	0.000	0.000	0.000	0.000	0.000	0.001	84.87	0.00
Douglas	50	242	0.001	0.000	0.000	0.000	0.000	0.007	0.008	31.44	0.00
Duaringa	51	1771	20.757	0.000	0.000	0.243	0.188	0.000	21.188	47.71	4.39
Eacham	52	112	0.018	0.000	0.008	0.000	0.000	0.000	0.025	61.33	0.01

¹ Based on the 1991 landcover baseline. Figures based on the new Woody FPC, which better account for regrowth, will be given in future reports.

Table 15 (continued): Woody vegetation change by land cover by Local Government Area (2003–2004).

Local Government Area			Rate of woody vegetation clearing (,000ha/yr) for							% Wooded vegetation cover 2003 ¹	% Total clearing in QLD
Name	Map Ref. No.	Total area (,000ha)	Pasture	Crops	Forest	Mining	Infra-structure	Settlement	Total		
Eidsvold	53	480	3.821	0.000	0.000	0.000	0.003	0.000	3.824	62.79	0.79
Emerald	54	1040	5.271	0.052	0.000	0.031	0.099	0.007	5.461	46.24	1.13
Erub Island	55	1	0.000	0.000	0.000	0.000	0.000	0.000	0.000	0.00	0.00
Esk	56	393	0.668	0.000	0.242	0.002	0.025	0.007	0.945	47.83	0.20
Etheridge	57	3923	0.624	0.000	0.000	0.014	0.118	0.000	0.756	86.02	0.16
Fitzroy	58	589	4.575	0.003	0.000	0.000	0.032	0.000	4.610	42.47	0.96
Flinders	59	4141	3.693	0.000	0.000	0.000	0.195	0.000	3.888	50.58	0.81
Gatton	60	157	0.228	0.000	0.000	0.023	0.050	0.047	0.348	63.48	0.07
Gayndah	61	270	0.496	0.000	0.000	0.000	0.000	0.000	0.496	33.04	0.10
Gladstone	62	29	0.006	0.000	0.000	0.000	0.000	0.033	0.038	25.13	0.01
Gold Coast	63	145	0.274	0.000	0.000	0.013	0.013	0.603	0.903	52.82	0.19
Goondiwindi	64	1	0.000	0.000	0.000	0.000	0.000	0.000	0.000	22.84	0.00
Hammond Island	65	1	0.000	0.000	0.000	0.000	0.000	0.000	0.000	81.05	0.00
Herberton	66	959	0.761	0.000	0.000	0.001	0.040	0.000	0.802	95.22	0.17
Hervey Bay	67	237	0.530	0.000	0.000	0.000	0.000	0.000	0.530	65.64	0.11
Hinchinbrook	68	281	0.081	0.000	0.000	0.000	0.004	0.000	0.085	16.03	0.02
Hope Vale	69	111	0.009	0.000	0.000	0.000	0.000	0.000	0.009	83.96	0.00
Iama Island	70	0	0.000	0.000	0.000	0.000	0.000	0.000	0.000	0.00	0.00
Ilfracombe	71	658	4.598	0.000	0.000	0.000	0.000	0.000	4.598	12.38	0.95
Inglewood	72	586	3.200	0.015	0.000	0.000	0.101	0.001	3.316	48.08	0.69
Inginoo	73	80	0.008	0.000	0.000	0.000	0.045	0.000	0.053	80.57	0.01
Ipswich	74	120	0.139	0.000	0.000	0.000	0.000	0.263	0.402	40.16	0.08
Isis	75	170	0.613	0.000	0.000	0.000	0.000	0.000	0.613	64.96	0.13
Isisford	76	1050	5.665	0.000	0.000	0.000	0.000	0.000	5.665	37.96	1.17
Jericho	77	2183	23.422	0.000	0.000	0.000	0.159	0.000	23.581	53.41	4.89
Johnstone	78	163	0.013	0.001	0.000	0.000	0.000	0.001	0.015	21.05	0.00

¹ Based on the 1991 landcover baseline. Figures based on the new Woody FPC, which better account for regrowth, will be given in future reports.

Table 15 (continued): Woody vegetation change by land cover by Local Government Area (2003–2004).

Local Government Area			Rate of woody vegetation clearing (,000ha/yr) for							% Wooded vegetation cover 2003 ¹	% Total clearing in QLD
Name	Map Ref. No.	Total area (,000ha)	Pasture	Crops	Forest	Mining	Infra-structure	Settlement	Total		
Jondaryan	79	190	0.373	0.000	0.000	0.000	0.001	0.001	0.374	5.84	0.08
Kilcoy	80	144	0.286	0.000	0.066	0.000	0.011	0.000	0.363	62.71	0.08
Kilkivan	81	326	0.677	0.000	0.044	0.000	0.000	0.000	0.721	46.92	0.15
Kingaroy	82	242	0.714	0.011	0.000	0.000	0.012	0.002	0.739	30.46	0.15
Kolan	83	265	0.799	0.000	0.000	0.000	0.001	0.000	0.800	57.70	0.17
Kowanyama	84	256	0.000	0.000	0.000	0.000	0.000	0.000	0.000	54.25	0.00
Kubin Island	85	15	0.000	0.000	0.000	0.000	0.000	0.000	0.000	0.00	0.00
Laidley	86	70	0.159	0.032	0.000	0.000	0.028	0.035	0.255	36.62	0.05
Livingstone	87	1190	3.654	0.000	0.000	0.012	0.046	0.001	3.713	15.44	0.77
Lockhart River	88	358	0.000	0.000	0.000	0.000	0.000	0.000	0.000	99.09	0.00
Logan	89	25	0.002	0.000	0.000	0.000	0.001	0.152	0.154	49.08	0.03
Longreach	90	2349	2.599	0.000	0.000	0.000	0.002	0.000	2.601	18.16	0.54
Mabuiag Island	91	1	0.000	0.000	0.000	0.000	0.000	0.000	0.000	0.00	0.00
Mackay	92	289	0.700	0.013	0.000	0.000	0.006	0.026	0.746	5.89	0.15
Mapoon	93	53	0.000	0.000	0.000	0.000	0.003	0.000	0.003	76.05	0.00
Mareeba	94	5345	0.484	0.001	0.010	0.000	0.245	0.048	0.789	86.33	0.16
Maroochy	95	116	0.109	0.000	0.000	0.000	0.030	0.138	0.277	66.48	0.06
Maryborough	96	124	0.529	0.000	0.000	0.000	0.000	0.000	0.529	67.47	0.11
Mc Kinlay	97	4078	0.659	0.000	0.000	0.000	0.056	0.000	0.716	19.42	0.15
Mer Island	98	0	0.000	0.000	0.000	0.000	0.000	0.000	0.000	0.00	0.00
Millmerran	99	451	1.922	0.000	0.061	0.000	0.140	0.000	2.123	45.97	0.44
Mirani	100	327	0.118	0.000	0.000	0.000	0.000	0.000	0.118	83.73	0.02
Miriam Vale	101	385	1.352	0.012	0.000	0.000	0.000	0.007	1.371	17.18	0.28
Monto	102	431	1.238	0.000	0.110	0.000	0.001	0.000	1.349	49.20	0.28
Mornington	103	121	0.018	0.000	0.000	0.000	0.022	0.000	0.039	26.46	0.01
Mount Isa	104	4306	0.028	0.000	0.000	0.000	0.018	0.004	0.050	40.63	0.01

¹ Based on the 1991 landcover baseline. Figures based on the new Woody FPC, which better account for regrowth, will be given in future reports.

Table 15 (continued): Woody vegetation change by land cover by Local Government Area (2003–2004).

Local Government Area			Rate of woody vegetation clearing (,000ha/yr) for							% Wooded vegetation cover 2003 ¹	% Total clearing in QLD
Name	Map Ref. No.	Total area (,000ha)	Pasture	Crops	Forest	Mining	Infra-structure	Settle-ment	Total		
Mount Morgan	105	49	0.035	0.000	0.000	0.000	0.000	0.000	0.035	69.67	0.01
Mundubbera	106	419	1.690	0.000	0.000	0.000	0.014	0.000	1.704	53.57	0.35
Murgon	107	66	0.094	0.000	0.000	0.000	0.000	0.000	0.094	28.51	0.02
Murilla	108	606	1.912	0.006	0.000	0.000	0.089	0.001	2.008	42.44	0.42
Murweh	109	4069	87.190	0.000	0.000	0.000	0.124	0.000	87.314	57.80	18.10
Nanango	110	173	0.480	0.000	0.015	0.148	0.013	0.044	0.700	43.08	0.15
Napranum	111	199	0.000	0.000	0.000	0.000	0.000	0.000	0.000	90.71	0.00
Nebo	112	1001	2.470	0.006	0.000	0.636	0.113	0.000	3.224	62.97	0.67
New Mapoon	113	10	0.005	0.000	0.000	0.000	0.000	0.000	0.005	92.53	0.00
Noosa	114	87	0.135	0.000	0.108	0.000	0.000	0.046	0.289	65.63	0.06
Palm Island	115	7	0.001	0.000	0.000	0.000	0.000	0.000	0.001	91.24	0.00
Paroo	116	4763	16.619	0.000	0.000	0.000	0.000	0.000	16.619	61.14	3.45
Peak Downs	117	811	4.796	0.002	0.000	0.275	0.152	0.000	5.225	43.10	1.08
Perry	118	235	0.554	0.000	0.000	0.000	0.003	0.000	0.558	58.02	0.12
Pine Rivers	119	77	0.055	0.000	0.000	0.000	0.003	0.222	0.280	58.25	0.06
Pittsworth	120	109	0.027	0.000	0.000	0.000	0.000	0.000	0.027	9.20	0.01
Pormpuraaw	121	440	0.000	0.000	0.000	0.000	0.000	0.000	0.000	76.33	0.00
Poruma	122	0	0.000	0.000	0.000	0.000	0.000	0.000	0.000	0.00	0.00
Quilpie	123	6751	13.380	0.000	0.000	0.000	0.083	0.000	13.463	36.08	2.79
Redcliffe	124	4	0.000	0.000	0.000	0.000	0.001	0.011	0.012	35.31	0.00
Redland	125	54	0.018	0.000	0.000	0.156	0.002	0.033	0.209	41.08	0.04
Richmond	126	2658	4.287	0.000	0.000	0.000	0.028	0.000	4.315	35.63	0.89
Rockhampton	127	19	0.010	0.000	0.000	0.000	0.000	0.001	0.011	49.13	0.00
Roma	128	8	0.002	0.000	0.000	0.000	0.000	0.000	0.002	23.91	0.00
Rosalie	129	220	0.128	0.000	0.041	0.003	0.001	0.003	0.177	20.32	0.04
Saibai Island	130	10	0.000	0.000	0.000	0.000	0.000	0.000	0.000	0.00	0.00

¹ Based on the 1991 landcover baseline. Figures based on the new Woody FPC, which better account for regrowth, will be given in future reports.

Table 15 (continued): Woody vegetation change by land cover by Local Government Area (2003–2004).

Local Government Area			Rate of woody vegetation clearing (,000ha/yr) for							% Wooded vegetation cover 2003 ¹	% Total clearing in QLD
Name	Map Ref. No.	Total area (,000ha)	Pasture	Crops	Forest	Mining	Infra-structure	Settle-ment	Total		
Sarina	131	144	0.804	0.000	0.000	0.000	0.000	0.000	0.804	32.71	0.17
Seisia Island	132	0	0.000	0.000	0.000	0.000	0.000	0.000	0.000	18.73	0.00
St Paul's Island	133	2	0.000	0.000	0.000	0.000	0.000	0.000	0.000	0.00	0.00
Stanthorpe	134	269	0.899	0.010	0.000	0.000	0.014	0.004	0.927	51.23	0.19
Tambo	135	1400	5.135	0.000	0.000	0.000	0.059	0.000	5.194	43.65	1.08
Tara	136	1167	4.953	0.010	0.000	0.000	0.114	0.024	5.100	29.01	1.06
Taroom	137	1860	4.402	0.000	0.000	0.000	0.011	0.002	4.415	45.50	0.92
Thuringowa	138	186	0.394	0.000	0.000	0.000	0.188	0.123	0.705	59.37	0.15
Tiaro	139	220	2.012	0.000	0.122	0.000	0.000	0.000	2.134	71.71	0.44
Toowoomba	140	12	0.000	0.000	0.000	0.000	0.002	0.013	0.015	51.13	0.00
Torres	141	94	0.000	0.000	0.000	0.000	0.011	0.000	0.011	1.43	0.00
Townsville	142	187	0.137	0.000	0.000	0.000	0.105	0.081	0.324	13.48	0.07
Ugar	143	0	0.000	0.000	0.000	0.000	0.000	0.000	0.000	0.00	0.00
Umagico	144	5	0.000	0.000	0.000	0.000	0.000	0.000	0.000	93.12	0.00
Waggamba	145	1339	3.218	0.004	0.000	0.000	0.038	0.002	3.262	26.40	0.68
Wambo	146	570	1.129	0.041	0.000	0.000	0.177	0.002	1.349	26.06	0.28
Warraber Island	147	0	0.000	0.000	0.000	0.000	0.000	0.000	0.000	0.00	0.00
Warroo	148	1364	18.181	0.000	0.000	0.000	0.037	0.000	18.218	44.75	3.78
Warwick	149	442	0.957	0.000	0.000	0.000	0.011	0.012	0.980	36.33	0.20
Weipa	150	1	0.000	0.000	0.000	0.000	0.000	0.002	0.002	24.97	0.00
Whitsunday	151	269	0.640	0.000	0.000	0.000	0.004	0.007	0.651	17.08	0.14
Winton	152	5379	1.150	0.000	0.000	0.000	0.014	0.000	1.164	13.87	0.24
Wondai	153	357	2.606	0.000	0.000	0.000	0.030	0.022	2.659	44.87	0.55
Woocoo	154	200	0.735	0.000	0.000	0.000	0.000	0.000	0.735	61.02	0.15
Woorabinda	155	39	0.087	0.000	0.000	0.000	0.013	0.000	0.099	63.92	0.02
Wujal Wujal	156	1	0.000	0.000	0.000	0.000	0.000	0.000	0.000	94.46	0.00
Yarrabah	157	16	0.000	0.000	0.000	0.000	0.000	0.000	0.000	96.41	0.00

5.4 Woody Vegetation Change by Regional Vegetation Management Group

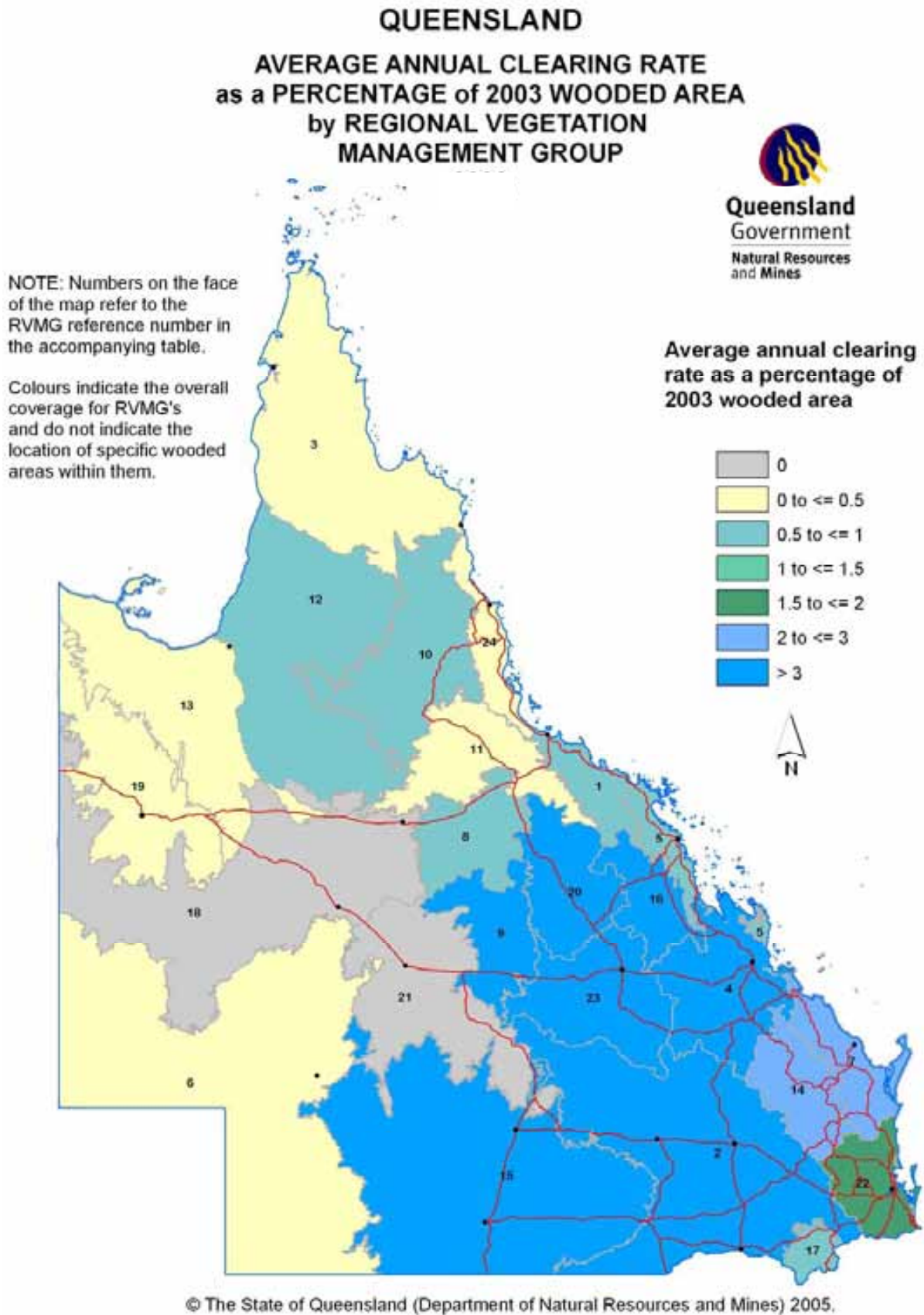


Figure 28: Average annual clearing rate as a percentage of 2003 wooded area by Regional Vegetation Management Group (2003–2004).

QUEENSLAND

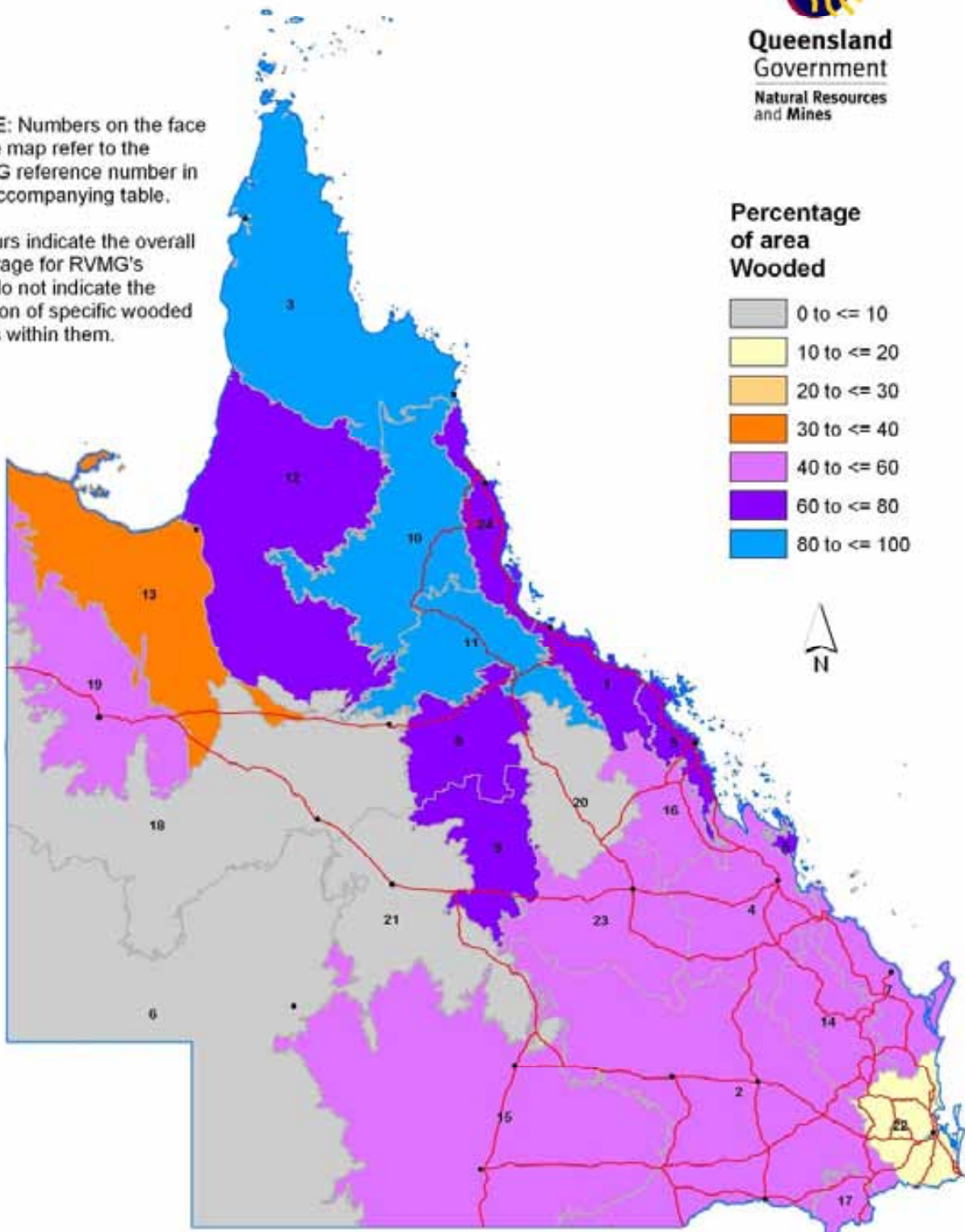
PERCENTAGE of AREA WOODED by REGIONAL VEGETATION MANAGEMENT GROUP 2003



**Queensland
Government**
Natural Resources
and Mines

NOTE: Numbers on the face of the map refer to the RVMG reference number in the accompanying table.

Colours indicate the overall coverage for RVMG's and do not indicate the location of specific wooded areas within them.



REGIONAL VEGETATION MANAGEMENT GROUP

© The State of Queensland (Department of Natural Resources and Mines) 2005.

Figure 29: Percentage of area wooded by Regional Vegetation Management Group (2003).

Table 16: Woody vegetation change by land cover by Regional Vegetation Management Group (2003–2004).

RVMP group			Rate of woody vegetation clearing (.000ha/yr) for							% Wooded vegetation cover 2003 ¹	% Total clearing in QLD
Name	Map Ref. No.	Total area (.000ha)	Pasture	Crops	Forest	Mining	Infra-structure	Settle-ment	Total		
Brigalow Belt North	1	1993	2.937	0.003	0.000	0.161	0.556	0.202	3.861	63.73	0.80
Brigalow Belt South	2	15384	99.108	0.087	0.061	0.003	1.092	0.069	100.421	42.11	20.82
Cape York	3	12116	0.512	0.000	0.000	0.634	0.334	0.003	1.483	92.83	0.31
Capricorn-Dawson	4	5400	33.987	0.046	0.000	0.483	0.302	0.002	34.819	43.46	7.22
Central Qld Coast	5	1480	3.146	0.018	0.000	0.000	0.048	0.036	3.248	76.19	0.67
CHC	6	23345	1.057	0.000	0.000	0.000	0.014	0.000	1.071	8.29	0.22
Coast Wide Bay	7	2761	8.535	0.012	1.285	0.037	0.001	0.051	9.922	59.67	2.06
Desert Uplands North	8	3468	4.098	0.068	0.000	0.000	0.492	0.000	4.659	79.40	0.97
Desert Uplands South	9	3417	23.432	0.000	0.000	0.000	0.326	0.000	23.759	65.71	4.93
Einasleigh Uplands North	10	7114	2.150	0.001	0.000	0.000	0.330	0.048	2.529	88.50	0.52
Einasleigh Uplands South	11	4619	0.860	0.008	0.000	0.016	0.406	0.008	1.298	83.36	0.27
Gulf Plains North	12	13088	3.995	0.000	0.000	0.000	0.528	0.000	4.523	77.13	0.94
Gulf Plains South	13	9101	0.759	0.000	0.000	0.000	0.218	0.000	0.978	34.57	0.20
Inland Burnett	14	2993	12.164	0.011	0.167	0.148	0.075	0.047	12.613	48.35	2.61
Mulga Land	15	18584	169.688	0.003	0.000	0.000	0.143	0.000	169.834	50.14	35.21
Nebo-Broadsound	16	2534	15.631	0.006	0.000	1.086	0.722	0.001	17.446	50.09	3.62
New England Tablelands	17	775	3.068	0.010	0.000	0.000	0.040	0.005	3.123	42.05	0.65
North-western Mitchell Grass Downs	18	4076	17.239	0.007	0.000	0.207	0.444	0.012	17.910	7.11	3.71
North West Highlands	19	16381	4.257	0.000	0.000	0.040	0.040	0.000	4.336	50.66	0.90
Northern Highlands	20	7232	0.130	0.000	0.000	0.050	0.058	0.004	0.242	53.89	0.05
South-eastern Mitchell Grass Downs	21	2504	3.497	0.034	1.688	0.201	0.253	2.967	8.639	18.48	1.79
South East Queensland	22	7843	24.062	0.000	0.000	0.000	0.015	0.000	24.076	52.53	4.99
Southern Highlands	23	5319	29.632	0.054	0.000	0.350	0.534	0.007	30.576	47.10	6.34
Wet Tropics	24	1999	0.530	0.001	0.381	0.001	0.016	0.063	0.992	79.74	0.21

¹ Based on the 1991 landcover baseline. Figures based on the new Woody FPC, which better account for regrowth, will be given in future reports.

This page has been left blank intentionally.

5.5 Woody Vegetation Change by Natural Resource Management Regions

QUEENSLAND

AVERAGE ANNUAL CLEARING RATE as a PERCENTAGE of 2003 WOODED AREA by NATURAL RESOURCE MANAGEMENT REGION

NOTE: Numbers on the face of the map refer to the NRMR reference number in the accompanying table.

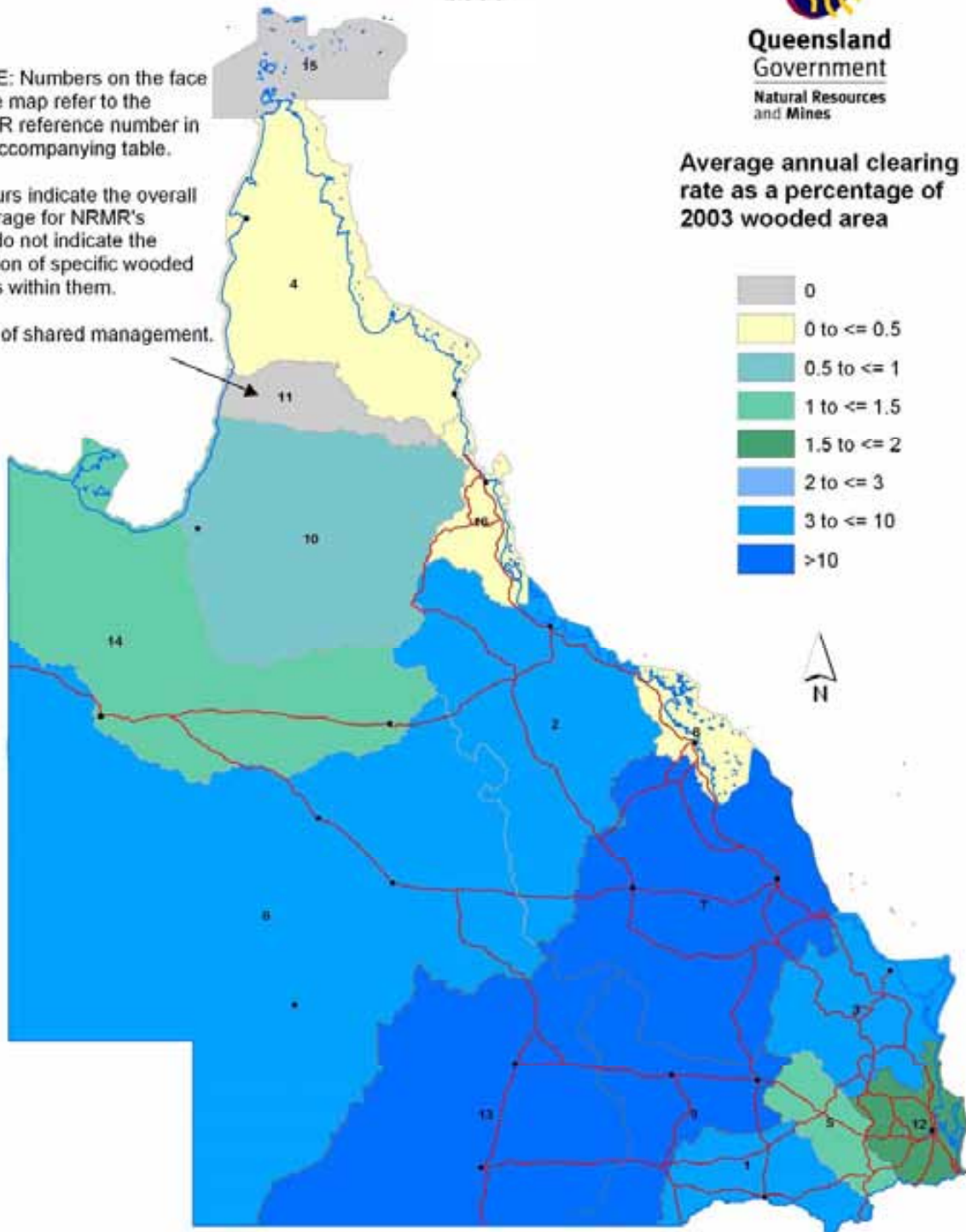
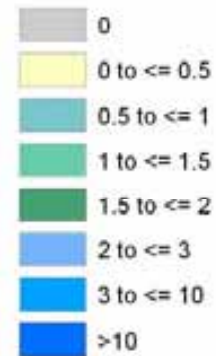
Colours indicate the overall coverage for NRMR's and do not indicate the location of specific wooded areas within them.

Area of shared management.



Queensland
Government
Natural Resources
and Mines

Average annual clearing rate as a percentage of 2003 wooded area



© The State of Queensland (Department of Natural Resources and Mines) 2005.

Figure 30: Average annual clearing as a percentage of 2003 wooded area by Natural Resource Management Region (2003–2004).

QUEENSLAND PERCENTAGE of AREA WOODED by NATURAL RESOURCE MANAGEMENT REGION 2003



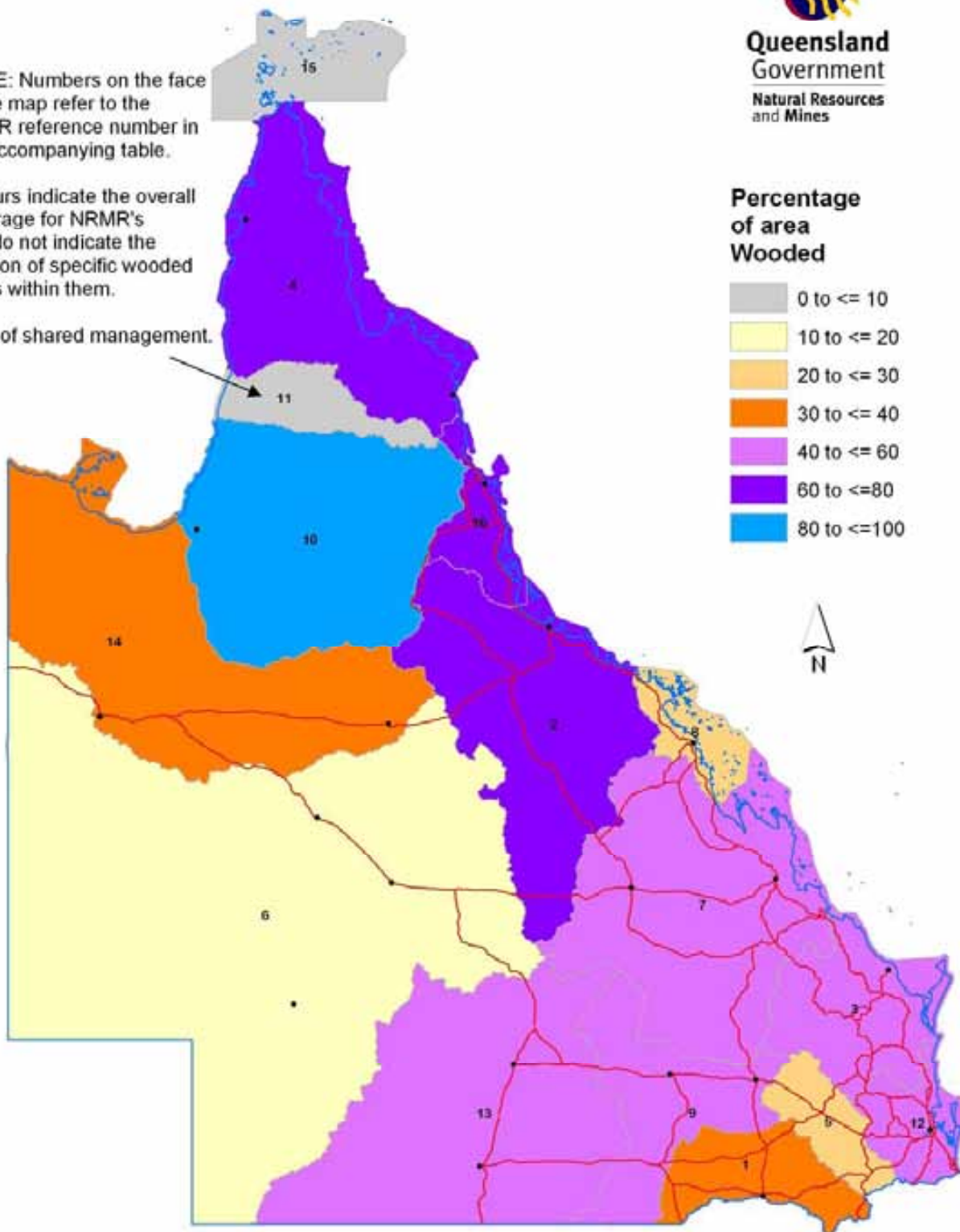
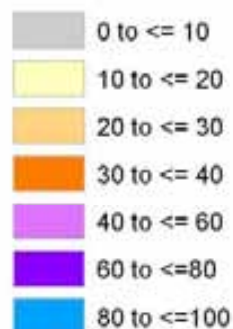
**Queensland
Government**
Natural Resources
and Mines

NOTE: Numbers on the face of the map refer to the NRMR reference number in the accompanying table.

Colours indicate the overall coverage for NRMR's and do not indicate the location of specific wooded areas within them.

Area of shared management.

Percentage of area Wooded



© The State of Queensland (Department of Natural Resources and Mines) 2005.

Figure 31: Percentage of area wooded by Natural Resource Management Region (2003).

Table 17: Woody vegetation change by land cover by Natural Resource Management Region (2003–2004).

NRM Region			Rate of woody vegetation clearing (,000ha/yr) for							% Wooded vegetation cover 2003 ³	% Total clearing in QLD
Name	Ref.	Total area (,000ha)	Pasture	Crops	Forest	Mining	Infra-structure	Settle-ment	Total		
Border Rivers	1	3849	19.521	0.039	0.000	0.000	0.358	0.007	19.925	35.81	4.13
Burdekin	2	14583	37.590	0.080	0.000	0.182	1.704	0.214	39.770	66.68	8.24
Burnett Mary	3	6286	22.562	0.023	1.449	0.161	0.113	0.059	24.367	49.43	5.05
Cape York ¹	4,11	16541	1.360	0.000	0.000	0.634	0.379	0.003	2.376	74.88	0.49
Condamine	5	2446	6.549	0.048	0.066	0.003	0.369	0.056	7.092	29.90	1.47
Desert Channels	6	51027	44.571	0.000	0.000	0.040	0.429	0.000	45.040	17.32	9.34
Fitzroy	7	16986	82.097	0.112	0.000	2.144	1.822	0.068	86.244	44.02	17.87
Mackay Whitsunday	8	2496	2.059	0.018	0.000	0.000	0.035	0.038	2.150	25.34	0.45
Maranoa Balonne	9	6428	58.561	0.014	0.000	0.000	0.221	0.006	58.802	40.21	12.19
Northern Gulf ²	10,11	19611	1.808	0.000	0.000	0.000	0.807	0.000	2.615	80.29	0.54
SEQ	12	2760	3.145	0.033	1.686	0.202	0.234	2.965	8.265	44.57	1.71
South West	13	18719	178.354	0.000	0.000	0.000	0.254	0.000	178.608	49.63	37.02
Southern Gulf	14	20400	5.378	0.000	0.000	0.050	0.292	0.005	5.725	38.74	1.19
Torres Strait	15	4486	0.000	0.000	0.000	0.000	0.011	0.000	0.011	0.56	0.00
Wet Tropics	16	2799	0.961	0.002	0.381	0.001	0.044	0.106	1.496	64.30	0.31

¹ Statistics for entire region, including overlap with Northern Gulf Region.

² Statistics for entire region, including overlap with Cape York Region.

³ Based on the 1991 landcover baseline. Figures based on the new Woody FPC, which better account for regrowth, will be given in future reports.

Table 18: Woody vegetation change by tenure by Natural Resource Management Region (2003–2004).

NRM Region			Rate of woody vegetation clearing (,000ha/yr) on					% Wooded vegetation cover 2003 ³	% Total clearing in QLD
Name	Ref.	Total area (,000ha)	Freehold	Leasehold	Other	Reserves	Total		
Border Rivers	1	3848	18.785	0.881	0.000	0.256	19.922	35.81	4.13
Burdekin	2	14583	5.961	33.662	0.106	0.041	39.770	66.68	8.25
Burnett Mary	3	6287	18.442	1.980	0.005	3.940	24.366	49.43	5.05
Cape York ¹	4,11	16541	0.888	0.659	0.756	0.072	2.375	74.88	0.49
Condamine	5	2446	6.875	0.149	0.000	0.068	7.092	29.90	1.47
Desert Channels	6	51027	20.096	24.920	0.000	0.015	45.030	17.32	9.34
Fitzroy	7	16986	53.670	31.689	0.362	0.522	86.242	44.02	17.88
Mackay Whitsunday	8	2496	2.000	0.142	0.000	0.007	2.150	25.34	0.45
Maranoa Balonne	9	6428	37.208	21.012	0.000	0.582	58.802	40.21	12.19
Northern Gulf ²	10,11	19611	0.235	2.365	0.000	0.015	2.615	80.29	0.54
SEQ	12	2760	6.415	0.600	0.020	1.172	8.207	44.57	1.71
South West	13	18719	95.407	83.057	0.000	0.145	178.609	49.63	37.03
Southern Gulf	14	20400	0.669	5.006	0.000	0.000	5.675	38.74	1.18
Torres Strait	15	4486	0.000	0.000	0.000	0.000	0.000	0.56	0.00
Wet Tropics	16	2799	0.965	0.154	0.000	0.377	1.496	64.30	0.31

¹ Statistics for entire region, including overlap with Northern Gulf Region.

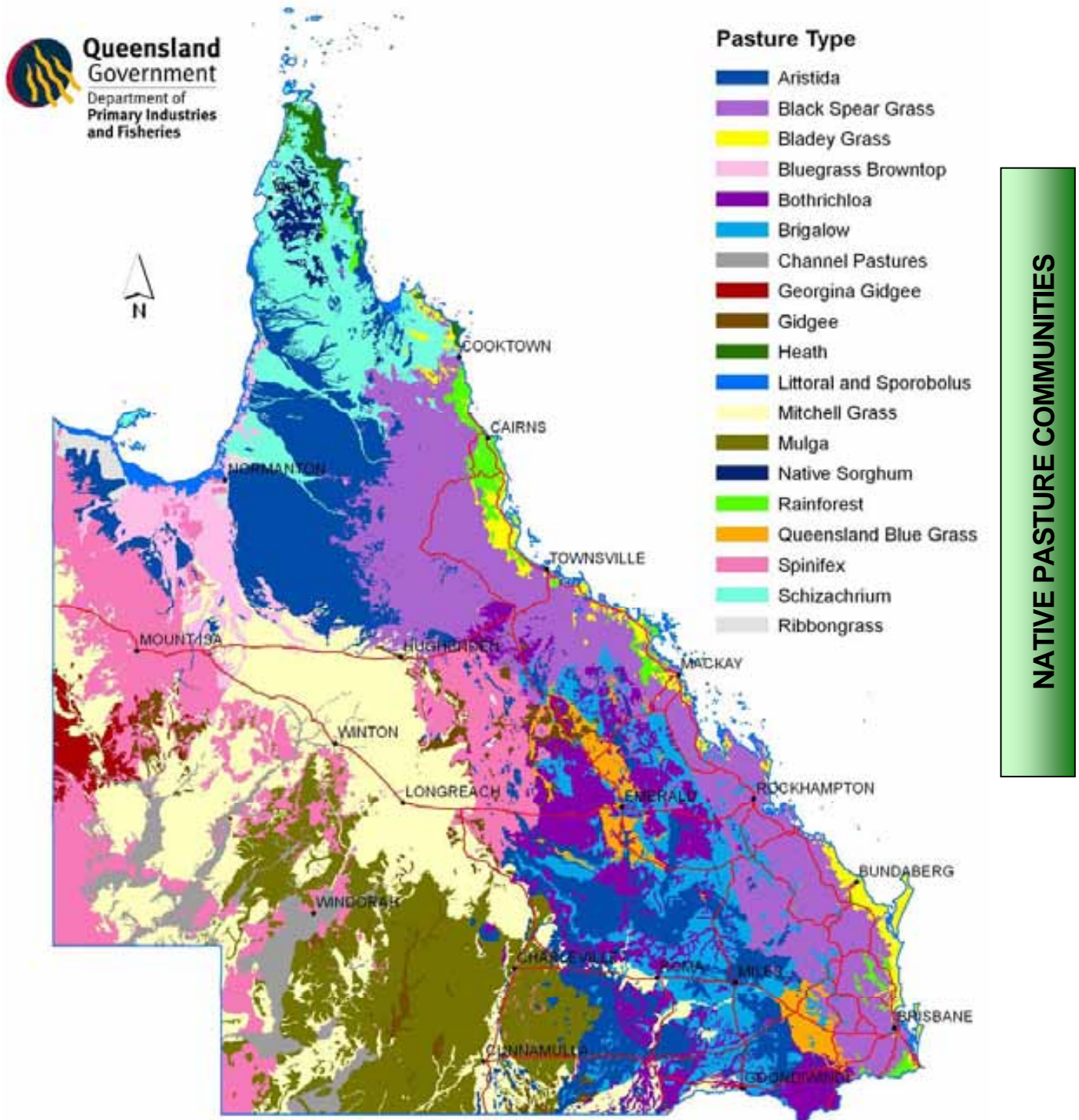
² Statistics for entire region, including overlap with Cape York Region.

³ Based on the 1991 landcover baseline. Figures based on the new Woody FPC, which better account for regrowth, will be given in future reports.

This page has been left blank intentionally.

5.6 Woody Vegetation Change by Native Pasture Community

QUEENSLAND PASTURES



© The State of Queensland (Department of Natural Resources and Mines) 2005.

Figure 32: Queensland native pasture communities (Weston *et al.*, 1981).

Table 19: Woody vegetation change by land cover by native pasture community (2003–2004).

Native Pasture Community		Rate of woody vegetation clearing (,000ha/yr) for							% Wooded vegetation cover 2003 ¹	% Total clearing in QLD
Name	Total area (,000ha)	Pasture	Crops	Forest	Mining	Infra-structure	Settle-ment	Total		
Aristida-Chrysopogon (tea tree)	9215	3.093	0.000	0.000	0.000	0.375	0.000	3.468	82.68	0.72
Aristida-Chrysopogon (W. Einasleigh)	2535	0.063	0.000	0.000	0.000	0.045	0.000	0.109	85.93	0.02
Aristida-Cleistochloa (sandstone hills)	3627	29.776	0.001	0.000	0.005	0.394	0.002	30.178	81.26	6.26
Aristida-Eragrostis (cypress pine)	1074	8.796	0.000	0.000	0.000	0.035	0.000	8.831	73.67	1.83
Aristida-Eragrostis (southern sandstone)	1726	9.310	0.025	0.061	0.000	0.563	0.028	9.987	68.92	2.07
Aristida-Thyridolepis (poplar box)	2585	65.184	0.003	0.000	0.000	0.020	0.000	65.207	44.39	13.52
Aristida-Triodia (lancewood)	2425	2.772	0.000	0.000	0.005	0.093	0.000	2.870	87.24	0.60
Black Spear Grass (central)	5935	16.575	0.007	0.069	0.761	0.352	0.057	17.822	63.02	3.70
Black Spear Grass (northern)	13175	5.206	0.010	0.000	0.016	1.295	0.255	6.782	85.14	1.41
Black Spear Grass (southern)	6052	20.191	0.046	1.367	0.140	0.250	1.906	23.900	52.90	4.96
Bladey Grass (central)	578	1.010	0.016	0.000	0.000	0.054	0.011	1.091	49.07	0.23
Bladey Grass (northern)	1029	0.485	0.000	0.325	0.000	0.031	0.035	0.876	70.12	0.18
Bladey Grass (southern)	987	3.209	0.000	1.401	0.156	0.066	0.859	5.691	71.56	1.18
Bluegrass Browntop	4775	1.092	0.000	0.000	0.000	0.031	0.000	1.123	15.14	0.23
Bothriochloa-Chloris (central)	4514	28.043	0.074	0.000	1.035	1.170	0.012	30.334	54.69	6.29
Bothriochloa-Chloris (south)	5286	48.010	0.029	0.000	0.064	0.388	0.015	48.507	42.63	10.06
Bothriochloa-Danthonia (traprock)	328	1.040	0.003	0.000	0.000	0.046	0.001	1.091	36.80	0.23
Brigalow (northern)	3918	20.080	0.054	0.000	0.381	0.167	0.009	20.691	31.08	4.29
Brigalow (Roma region)	1622	4.262	0.054	0.053	0.061	0.008	0.020	4.459	19.45	0.92
Brigalow and Belah (southern)	3226	16.747	0.032	0.105	0.004	0.124	0.008	17.020	19.70	3.53
Channel Pastures	5534	0.000	0.000	0.000	0.000	0.000	0.000	0.000	5.80	0.00
Georgina gidgee	1637	0.000	0.000	0.000	0.000	0.000	0.000	0.000	15.01	0.00

Table 19 (continued): Woody vegetation change by land cover by native pasture community (2003–2004).

Native Pasture Community		Rate of woody vegetation clearing (,000ha/yr) for							% Wooded vegetation cover 2003 ¹	% Total clearing in QLD
Name	Total area (,000ha)	Pasture	Crops	Forest	Mining	Infra-structure	Settle-ment	Total		
Gidgee (central)	1317	6.000	0.000	0.000	0.001	0.078	0.000	6.079	35.52	1.26
Gidgee (far west)	611	0.001	0.000	0.000	0.007	0.001	0.000	0.010	9.19	0.00
Gidgee (southern)	772	1.365	0.000	0.000	0.000	0.000	0.000	1.365	43.32	0.28
Heath	942	0.009	0.000	0.000	0.000	0.000	0.000	0.009	91.47	0.00
Littoral and sporobolus	1488	0.357	0.000	0.020	0.002	0.025	0.188	0.592	37.51	0.12
Mitchell Grass (Ashy Downs)	2556	0.204	0.000	0.000	0.000	0.000	0.000	0.204	6.20	0.04
Mitchell Grass (Northern Downs)	21962	18.137	0.000	0.000	0.011	0.061	0.000	18.209	9.22	3.78
Mitchell Grass (Southern Downs)	2552	6.331	0.000	0.000	0.000	0.002	0.000	6.333	34.05	1.31
Mitchell Grass (Southern Flooded)	875	1.206	0.002	0.000	0.000	0.003	0.000	1.211	29.13	0.25
Mitchell Grass (Stony Downs)	2144	0.000	0.000	0.000	0.000	0.000	0.000	0.000	3.48	0.00
Mulga on residuals	8023	7.651	0.000	0.000	0.000	0.023	0.000	7.674	27.48	1.59
Mulga-Whitewood	637	0.026	0.000	0.000	0.000	0.000	0.000	0.026	19.20	0.01
Native Sorghum	1013	0.052	0.000	0.000	0.000	0.006	0.000	0.058	98.18	0.01
Queensland Blue Grass (central)	1574	4.280	0.007	0.000	0.058	0.065	0.001	4.412	24.53	0.91
Queensland Blue Grass (southern)	940	0.224	0.005	0.000	0.000	0.005	0.006	0.240	8.43	0.05
Rainforest	1849	0.974	0.001	0.180	0.002	0.010	0.097	1.264	83.84	0.26
Ribbongrass	847	0.278	0.000	0.000	0.000	0.060	0.000	0.339	88.60	0.07
Schizachrium (flooded plains)	1782	0.359	0.000	0.000	0.000	0.043	0.000	0.402	57.16	0.08
Schizachrium (hills and plains)	7575	0.354	0.000	0.000	0.623	0.331	0.002	1.310	95.12	0.27
Soft and hard mulga on red plain	10119	103.960	0.000	0.000	0.000	0.126	0.000	104.086	56.09	21.59
Spinifex (CQ desert)	4743	25.237	0.000	0.000	0.000	0.452	0.000	25.689	74.56	5.33
Spinifex (hard on sand dunes)	5458	0.409	0.000	0.000	0.000	0.000	0.000	0.409	3.63	0.08
Spinifex (hard with eucalypts & acacia)	1987	1.853	0.000	0.000	0.000	0.000	0.000	1.853	27.15	0.38
Spinifex (Mt Isa highlands)	8895	0.138	0.000	0.000	0.072	0.173	0.004	0.387	48.77	0.08

¹ Based on the 1991 landcover baseline. Figures based on the new Woody FPC, which better account for regrowth, will be given in future reports.

Section 6. SLATS Products

For information on all SLATS products contact:

Geographic Information Officer
Imagery Management
Cadastral Information Services
Department of Natural Resources and Mines
Phone: 61 7 3896 3187
Fax: 61 7 3406 2762

Or visit the SLATS website: <http://www.nrm.qld.gov.au/slats>

Acknowledgements

This work is the combined effort of the SLATS project team which includes: John Armston, Susan Birtles, Gerry Bisshop, Lindsay Brebber, John Carter, Lisa Collett, Sel Counter, Tim Danaher, Robert Denham, Christina de Vries, Alisa Eustace, Sam Gillingham, David Harris, Beverly Henry, Joanna Shaw, Peter Scarth, Craig Shephard, Andrew Stewart, Laszlo Tamas and Jim Walls. SLATS is funded by NR&M and the Queensland Treasury Service Enhancement Funding.

References

- Accad, A., Neldner, V.J., Wilson, B.A. and Niehus, R.E. (2001). Remnant vegetation in Queensland: analysis of pre-clearing, remnant 1997–1999 Regional Ecosystem information. Queensland Herbarium, Environmental Protection Agency, Brisbane.
- Accad, A., Neldner, V.J., Wilson, B. A., and Niehus, R.E. (2003). Remnant vegetation in Queensland: analysis of remnant vegetation 1997–1999–2000–2001, including Regional Ecosystem information. Queensland Herbarium, Environmental Protection Agency, Brisbane.
- Armston, J.D., Danaher, T.J., and Collett, L.J. (2004A). A regression approach for mapping woody Foliage Projective Cover in Queensland with Landsat data. In: *Proceedings of the 12th Australasian Remote Sensing and Photogrammetry Conference*, Fremantle, Australia, Oct 2004.
- Armston, J.D., Danaher, T.J., Goulevitch, B.M. and Byrne, M.I. (2002). Geometric correction of Landsat MSS, TM and ETM+ imagery for mapping woody vegetation cover and change detection in Queensland. In: *Proceedings of the 11th Australasian Remote Sensing and Photogrammetry Conference*, Brisbane, Australia, Sep 2002.
- Armston, J.D., Phinn, S.R., Scarth, P.F. and Danaher, T.J. (2004B). Analysis of Multiangle Imaging Spectro-Radiometer (MISR) measurements in the Queensland Southern Brigalow Belt. In: *Proceedings of the 12th Australasian Remote Sensing and Photogrammetry Conference*, Fremantle, Australia, Oct 2004.
- Australian Greenhouse Office [AGO] (2002). *Greenhouse gas emissions from land use change in Australia: an integrated application of the National Carbon Accounting System*, Australian Greenhouse Office, Canberra.
- Australian Greenhouse Office [AGO] (2003). *Greenhouse gas emissions from land use change in Australia: results of the National Carbon Accounting System 1988–2001*, Australian Greenhouse Office, Canberra.
- Australian Greenhouse Office [AGO] (2004). *National Greenhouse Gas Inventory 2002*, Australian Greenhouse Office, Canberra.
- Barson, M.M. (1996). Remote sensing of agricultural land cover for the Australian Continent. In: *Proceedings of the 8th Australasian Remote Sensing Conference*, Canberra, Australia, Mar 1996.
- Barson, M. M., Randall, L. A. and Bordas, V. (2000). Land cover change in Australia. Results of the Collaborative Bureau of Rural Sciences – State agencies' project on remote sensing of land cover change. Bureau of Rural Sciences, Canberra.
- Boulter, S.L., Wilson, J., Westrup, J., Anderson, E.R., Turner, E.J. and Scanlan, J.C. (2000). Native Vegetation Management in Queensland, Background, Science and Values, Department of Natural Resources, Brisbane.
- Burrows, W.H., Henry, B.K., Back, P.V., Hoffmann, M.B., Tait, L.J., Anderson, E.R., Menke, N., Danaher, T., Carter, J.O., and McKeon, G.M. (2002). Growth and carbon stock change in eucalypt woodlands in northeast Australia: ecological and greenhouse sink implications. *Global Change Biology*, **8**: 769–784.

Burrows, W.H., Hoffmann, M.B., Compton, J.F., Back, P.V. and Tait, L.J. (2000). Allometric relationships and community biomass estimates for some dominant eucalypts in Central Queensland woodlands. *Australian Journal of Botany*, 48(6):?-?.

Carnahan, J.A. (1988). Map of Australia Present Vegetation. Australian Surveying and Land Information Group, Canberra.

Collett, L., Goulevitch, B.M. and Danaher, T.J. (1998). SLATS radiometric correction: a semi-automated multi stage process for the standardisation of temporal and spatial radiometric differences. In: *Proceedings of the 9th Australasian Remote Sensing and Photogrammetry Conference*, Sydney, Australia, Jul 1998.

Danaher, T.J., Armston, J.D., and Collett, L. (2004). A regression model approach for mapping woody Foliage Projective Cover using Landsat imagery in Queensland, Australia. In: *Proceedings IGARSS 2004*, Anchorage, Alaska, Aug 2004.

Danaher, T.J., Xiolaing, W. and Campbell, N.A. (2001). Bi-directional reflectance distribution function approaches to radiometric calibration of Landsat ETM+ imagery. In: *Proceedings of the IEEE 2001 International Geoscience and Remote Sensing Symposium*, University of NSW, Sydney, Australia, Jul 2001.

Danaher, T.J. (2002). An empirical BRDF correction for Landsat TM and ETM+ imagery. In: *Proceedings of the 11th Australasian Remote Sensing and Photogrammetry Conference*, Brisbane, Australia, Sep 2002.

Danaher, T.J., Carter, J.O., Brook, K.D. and Dudgeon, G. (1992). Broadscale vegetation mapping using NOAA AVHRR imagery. In: *Proceedings of the Sixth Australasian Remote Sensing Conference*, Wellington, New Zealand, Nov 1992.

Department of Natural Resources (1997). Interim report: The Statewide Landcover and Trees Study (SLATS), Oct 1997. Department of Natural Resources, Brisbane.

Department of Natural Resources (1999A). Land cover change in south east Queensland 1988–1997: a Statewide Landcover and Trees Study (SLATS) report, Apr 1999. Department of Natural Resources, Brisbane.

Department of Natural Resources (1999B) Land cover change in Queensland 1991–1995: a Statewide Landcover and Trees Study (SLATS) report, Jul 1999. Department of Natural Resources, Brisbane.

Department of Natural Resources (1999C). Land cover change in Queensland 1995–1997: a Statewide Landcover and Trees Study (SLATS) report, Aug 1999. Department of Natural Resources, Brisbane.

Department of Natural Resources (2000). Land cover change in Queensland 1997–1999: a Statewide Landcover and Trees Study (SLATS) report, Sep 2000. Department of Natural Resources, Brisbane.

de Vries, C., Danaher, T.J., and Scarth, P.F. (2004). Calibration of multiple Landsat sensors based on pseudo-invariant target sites in western Queensland, Australia. In: *Proceedings IGARSS 2004*, Anchorage, Alaska, Aug 2004.

de Vries, C., Danaher, T.J., and Scarth, P.F. (2004). Calibration of multiple Landsat sensors based on pseudo-invariant target sites in western Queensland, Australia. In: *Proceedings of the 12th Australasian Remote Sensing and Photogrammetry Conference*, Fremantle, Australia, Oct 2004.

Goulevitch, B.M., Danaher, T.J., Stewart, A.J., Harris, D.P., and Lawrence, L.J. (2002). Mapping woody vegetation cover over the State of Queensland using Landsat TM and ETM+ imagery. In: *Proceedings of the 11th Australasian Remote Sensing and Photogrammetry Conference*, Brisbane, Australia, Sep 2002.

Henry, B.K., Danaher, T.J., McKeon, G.M. and Burrows, W.H. (2002). A review of the potential role of greenhouse gas abatement in native vegetation management in Queensland's rangelands. *Rangeland Journal*, **24**(1): 112–32.

Intergovernmental Panel on Climate Change [IPCC] (1996). Greenhouse gas inventory reference manual. Revised 1996 In: *IPCC Guidelines for National Greenhouse Gas Inventories*, Volume 3.

Irons, J. and Ochs, W. (2004). Status of the Landsat Data Continuity Mission, *Proceedings IGARSS 2004*, Anchorage, Alaska, Aug 2004.

Kitchen, M.B. and Barson, M.M. (1998). Monitoring land cover change: specifications for the remote sensing of agricultural land cover change project 1990–1995. Bureau of Rural Sciences, Canberra.

Kuhnell, C., Goulevitch, B.M., Danaher, T.J. and Harris, D.P. (1998). Mapping woody vegetation cover over the State of Queensland using Landsat TM imagery. In: *Proceedings of the 9th Australasian Remote Sensing and Photogrammetry Conference*, Sydney, Australia, Jul 1998.

Lucas, R., Cronin, N., Moghaddam, M., Lee, A., Armston, J., Bunting, P. and Witte, C. (2006) Integration of radar and Landsat-derived foliage projective cover for Woody Regrowth Mapping, Queensland, Australia *Remote Sensing of Environment*, (in press).

National Forest Inventory [NFI] (1998). Australia's state of the forests report 1998. Bureau of Rural Sciences, Canberra.

Natural Resources and Mines [NR&M] (2002). Land cover change in the Fitzroy Catchment 1999–2001: a Statewide Landcover and Trees Study (SLATS) report, October 2002. Natural Resources and Mines, Brisbane.

Natural Resources and Mines [NR&M] (2003A). Land cover change in Queensland 1999–2001: a Statewide Landcover and Trees Study (SLATS) report, January 2003. Natural Resources and Mines, Brisbane.

Natural Resources and Mines [NR&M] (2003B). Land cover change in the Queensland Murray Darling Basin 1999–2001: a Statewide Landcover and Trees Study (SLATS) report, July 2002. Natural Resources and Mines, Brisbane.

Natural Resources and Mines [NR&M] (2003C). Land cover change in the Burdekin Catchment 1999–2001: a Statewide Landcover and Trees Study (SLATS) report, January 2003. Natural Resources and Mines, Brisbane.

Natural Resources and Mines [NR&M] (2003D). Land cover change in the Burnett/Mary NAP Region 1999–2001: a Statewide Landcover and Trees Study (SLATS) report, January 2003. Natural Resources and Mines, Brisbane.

Natural Resources and Mines [NR&M] (2003E). Land cover change in the western South-east Queensland NAP Region 1999–2001: a Statewide Landcover and Trees Study (SLATS) report, January 2003. Natural Resources and Mines, Brisbane.

Natural Resources and Mines [NR&M] (2004). Land cover change in Queensland 1988–1991: a Statewide Landcover and Trees Study (SLATS) report, December 2004. Natural Resources and Mines, Brisbane.

Natural Resources and Mines [NR&M] (2005). Land cover change in Queensland 2001–2003: a Statewide Landcover and Trees Study (SLATS) report, February 2005. Natural Resources and Mines, Brisbane.

National Greenhouse Gas Inventory Committee (1998). Australian methodology for the estimation of greenhouse gas emissions and sinks: workbook for carbon dioxide from the biosphere. National Greenhouse Gas Inventory Committee, Workbook 4.2 Reprinted Revision 2 with Supplements 1998, Canberra.

Steinberg, D. and Colla, P. (1995). CART: Tree-Structured Non-Parametric Data Analysis. Salford Systems, San Diego, California.

Tickle, P., Witte, C., Danaher, T.J. and Jones, K. (1998). The application of large-scale video and laser altimetry to forest inventory. In: *Proceedings of the 9th Australasian Remote Sensing and Photogrammetry Conference*, Sydney, Australia, Jul 1998.

United States Geological Survey [USGS] (2003). Landsat monthly update, June 2003.

Wedderburn-Bisshop, G.R., Walls, J., Senarath, U., and Stewart, A.J. (2002). Methodology for mapping change in woody land cover over Queensland from 1999 to 2001 using Landsat ETM+. In: *Proceedings of the 11th Australasian Remote Sensing and Photogrammetry Conference*, Brisbane, Australia, Sep 2002.

Weston, E.J., Harbison, J., Leslie, J.K., Rosenthal, K.M. and Mayer, R.J. (1981). Assessment of the agricultural and pastoral potential of Queensland. Technical Report No. 27. Queensland Department of Primary Industries Agriculture Branch, Brisbane.