



# Land Cover Change in the **Wet Tropics** Natural Resource Management Region **2004–2005**

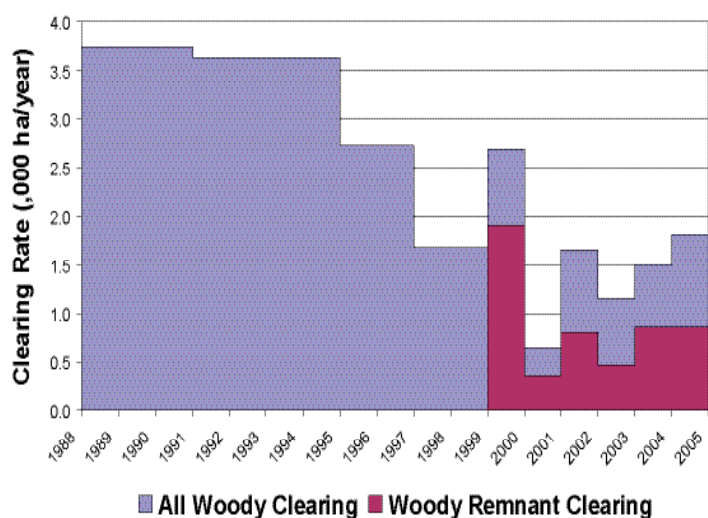


Figure 1. Woody vegetation clearing rates in the Wet Tropics Natural Resource Management Region.

## Summary

The woody vegetation clearing rate for 2004–2005 for the Wet Tropics region was 1,806 ha/year.

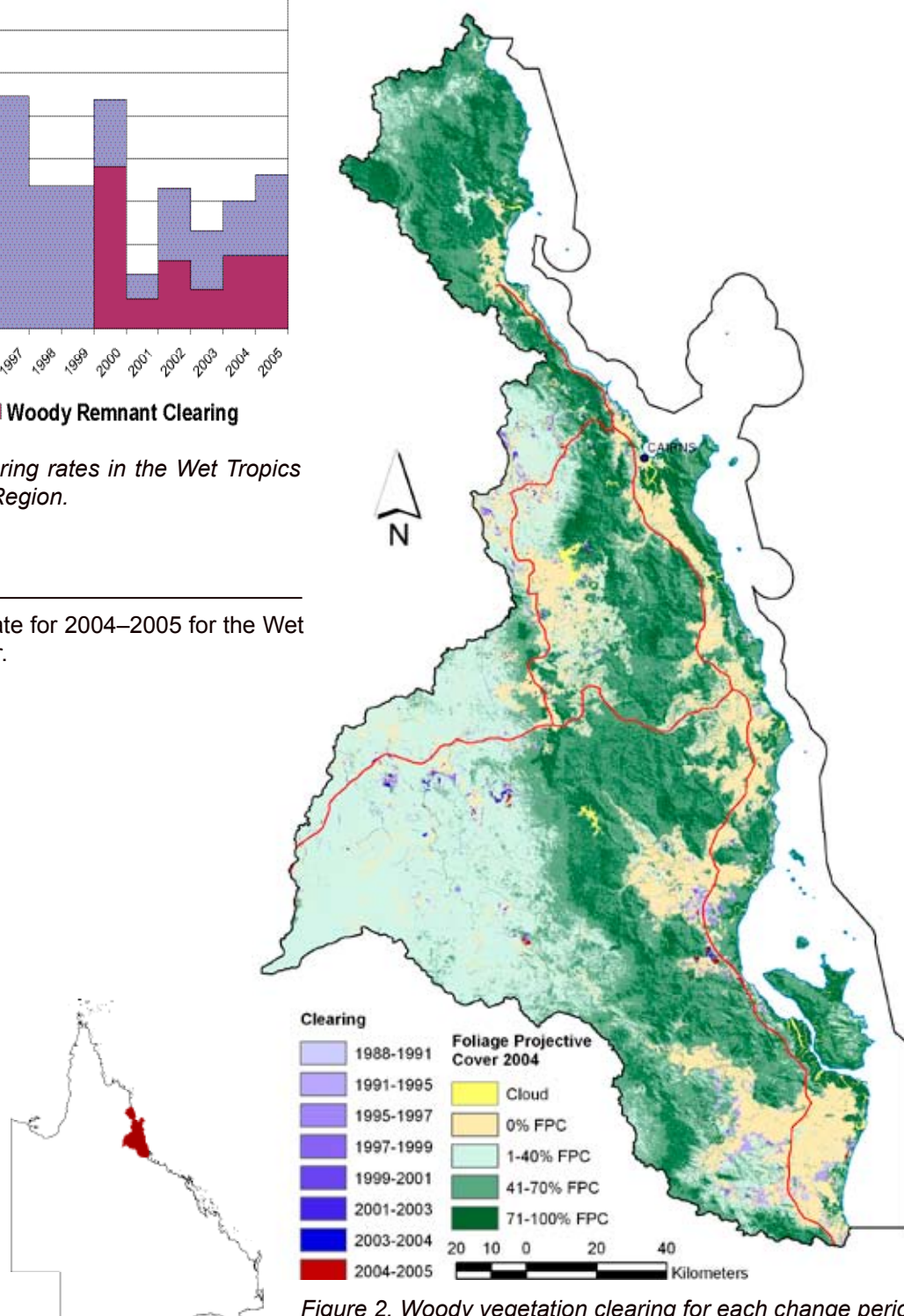


Figure 2. Woody vegetation clearing for each change period.

## Woody Vegetation Clearing by Remnant Status

Table 1. Remnant and Non-remnant woody clearing rates in the Wet Tropics Natural Resource Management Region.

Period	Woody vegetation clearing rate (,000ha/yr) of		
	Non-remnant woody	Remnant woody	Total woody
1999–2000	0.776	1.911	2.687
2000–2001	0.306	0.351	0.657
2001–2002	0.845	0.814	1.659
2002–2003	0.691	0.464	1.155
2003–2004	0.633	0.862	1.496
2004–2005	0.943	0.863	1.806

\* Regional Ecosystem remnant mapping prior to 1999 not used in this analysis.

## Woody Vegetation Clearing by Tenure

Table 2. Woody vegetation clearing rates in the Wet Tropics Natural Resource Management Region by tenure.

Period	Woody vegetation clearing rate (,000ha/yr) on				
	Freehold	Leasehold	Reserves	Other Tenures	Total
1988–1991	2.533	0.711	0.469	0.021	3.733
1991–1995	2.712	0.613	0.291	0.005	3.620
1995–1997	2.234	0.396	0.082	0.006	2.719
1997–1999	1.156	0.451	0.059	0.008	1.675
1999–2000	1.966	0.585	0.136	0.000	2.687
2000–2001	0.476	0.119	0.061	0.001	0.657
2001–2002	0.889	0.662	0.107	0.000	1.659
2002–2003	0.606	0.336	0.208	0.004	1.155
2003–2004	0.965	0.154	0.377	0.000	1.496
2004–2005	0.935	0.385	0.486	0.000	1.806

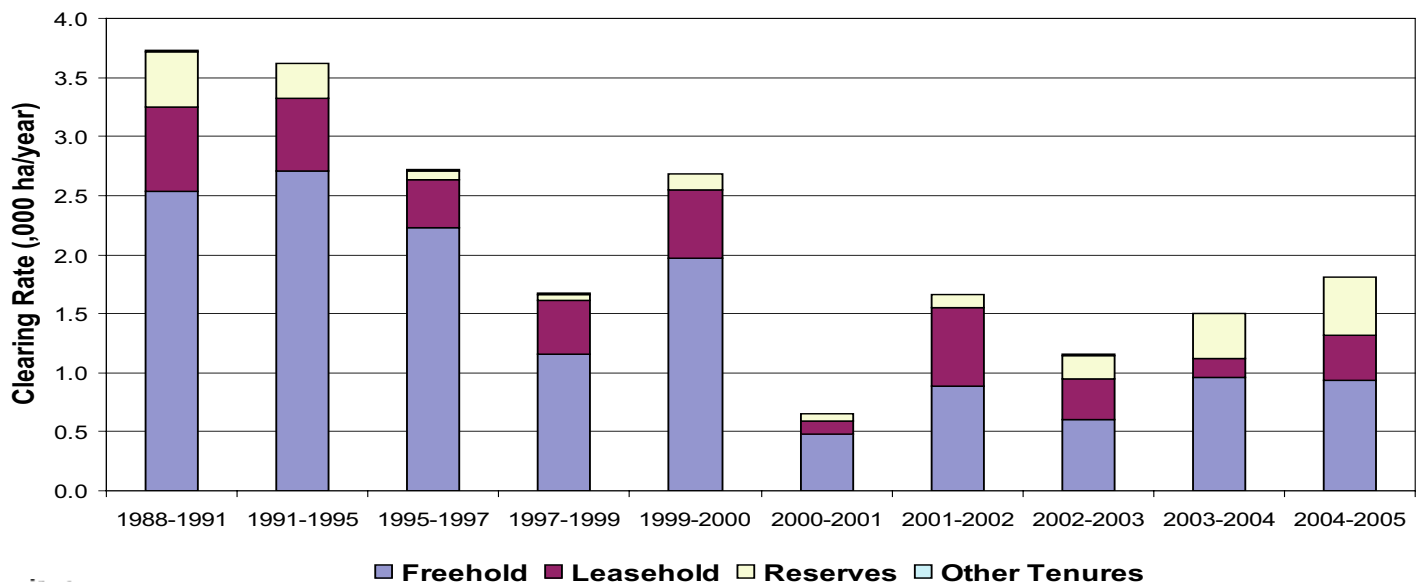


Figure 3. Woody vegetation clearing rates in the Wet Tropics Natural Resource Management Region by tenure.

Wet Tropics NRM Region, 30% of is freehold tenure, 27% is leasehold and 41% is reserves tenure (based on 2001 DCDB).

## Woody Vegetation Clearing by Subcatchment

Table 3. Woody vegetation clearing rates in the Wet Tropics Natural Resource Management Region by subcatchment #.

Period	Woody vegetation clearing rate (,000ha/yr) for					
	Barron River	Daintree River	Herbert River	Hinchinbrook Island	Mossman River	Mulgrave River
1988–1991	0.407	0.036	1.887	0.000	0.007	0.061
1991–1995	0.201	0.026	2.269	0.000	0.009	0.029
1995–1997	0.703	0.029	1.162	0.000	0.043	0.025
1997–1999	0.360	0.038	0.837	0.000	0.009	0.015
1999–2000	0.940	0.039	1.357	0.000	0.037	0.018
2000–2001	0.176	0.007	0.271	0.000	0.014	0.044
2001–2002	0.223	0.019	1.020	0.000	0.009	0.024
2002–2003	0.214	0.023	0.457	0.000	0.026	0.034
2003–2004	0.163	0.002	0.855	0.000	0.019	0.052
2004–2005	0.212	0.005	0.881	0.000	0.018	0.036

Table 3.continued

Period	Woody vegetation clearing rate (,000ha/yr) for					
	Murray River	North Johnstone River	Russell River	South Johnstone River	Tully River	Total
1988–1991	0.816	0.059	0.065	0.102	0.249	3.709
1991–1995	0.744	0.039	0.065	0.125	0.130	3.609
1995–1997	0.404	0.082	0.015	0.076	0.179	2.696
1997–1999	0.287	0.016	0.023	0.024	0.061	1.639
1999–2000	0.166	0.034	0.024	0.037	0.031	2.647
2000–2001	0.037	0.021	0.056	0.019	0.012	0.650
2001–2002	0.220	0.015	0.060	0.021	0.041	1.639
2002–2003	0.272	0.029	0.005	0.020	0.073	1.131
2003–2004	0.347	0.015	0.000	0.014	0.029	1.496
2004–2005	0.572	0.029	0.000	0.027	0.014	1.806

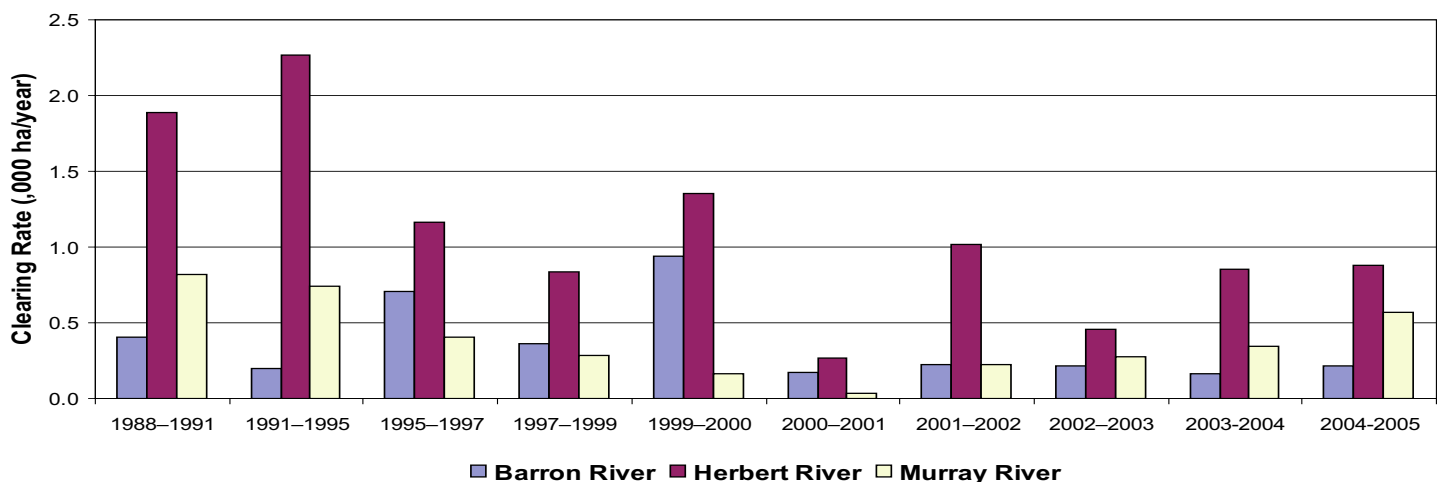


Figure 4. Woody vegetation clearing rates in the Wet Tropics Natural Resource Management Region by subcatchment #.

# Please refer to Figure 24 of the main report (NRW, 2007) for the location of each subcatchment.

## Remaining Woody Vegetation

Table 4. Remaining Woody Vegetation in the Wet Tropics Natural Resource Management Region by subcatchment.

,000 ha	Barron River	Daintree River	Herbert River	Hinchinbrook Island	Mossman River	Mulgrave River
Catchment area	219	211	984	40	47	132
Area woody 2004	165	204	843	38	40	110
% of catchment woody in 2004	75	97	86	97	85	84

Table 4. continued

,000 ha	Murray River	North Johnstone River	Russell River	South Johnstone River	Tully River	Total
Catchment area	111	103	67	129	168	2218
Area woody 2004	86	83	55	97	137	1865
% of catchment woody in 2004	78	80	82	75	81	84

## Woody Vegetation Clearing by Replacement Landcover

Table 5. Woody vegetation clearing rates in the Wet Tropics Natural Resource Management Region by replacement

Period	Woody vegetation clearing rate (,000ha/yr) for						Total*
	Pasture	Crop	Forestry	Mining	Infrastructure	Settlement	
1988–1991	1.050	1.973	0.313	0.003	0.310	0.097	3.746
1991–1995	0.221	3.036	0.294	0.000	0.040	0.048	3.638
1995–1997	0.552	1.885	0.073	0.006	0.105	0.108	2.728
1997–1999	0.689	0.852	0.042	0.000	0.069	0.027	1.679
1999–2000	2.006	0.210	0.078	0.000	0.381	0.012	2.687
2000–2001	0.392	0.089	0.051	0.000	0.103	0.024	0.657
2001–2002	1.286	0.236	0.060	0.023	0.027	0.026	1.659
2002–2003	0.750	0.165	0.191	0.006	0.023	0.020	1.155
2003–2004	0.961	0.002	0.381	0.001	0.044	0.106	1.496
2004–2005	1.011	0.012	0.655	0.004	0.052	0.072	1.806

\* total excludes natural tree death

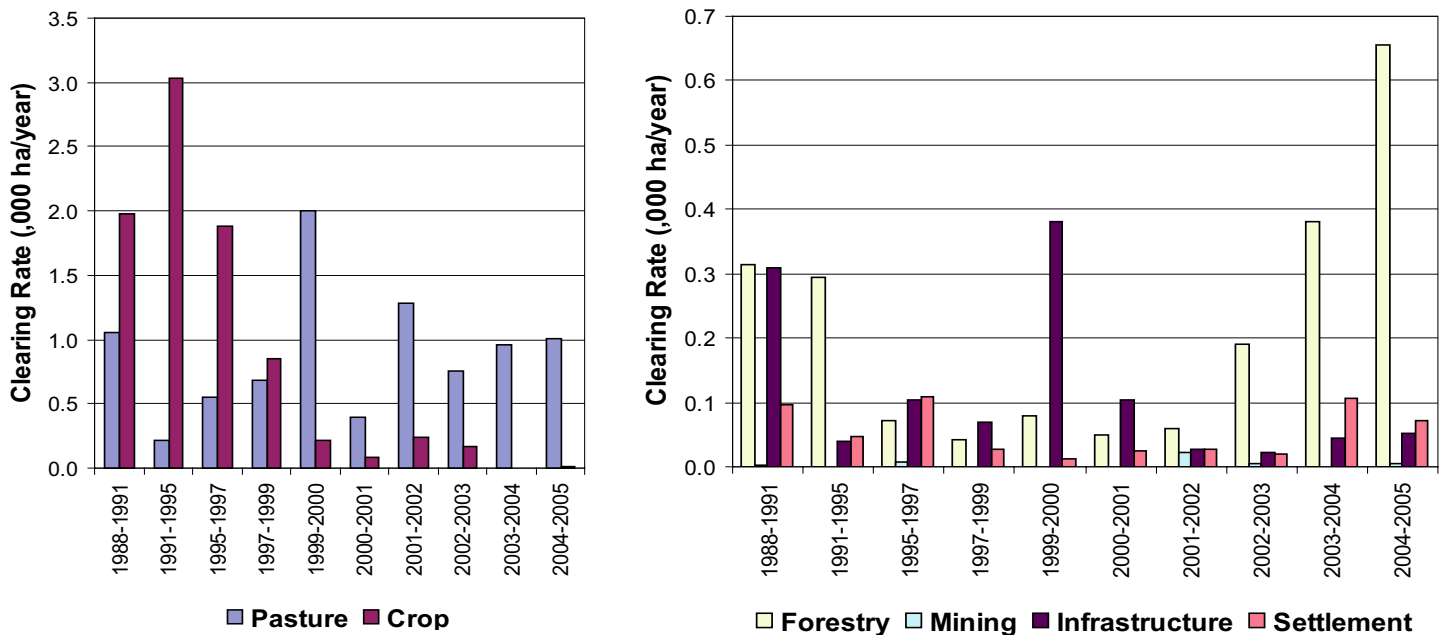
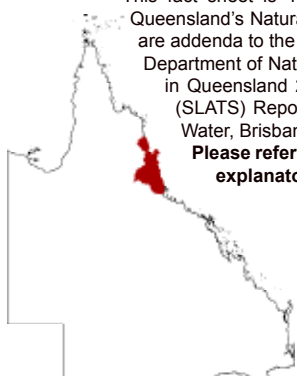


Figure 5. Woody vegetation clearing rates in the Wet Tropics Natural Resource Management Region by replacement landcover

This fact sheet is 14 of 14 in a series detailing land cover change in Queensland's Natural Resource Management Regions. These fact sheets are addenda to the report:

Department of Natural Resources and Water (2007). Land cover change in Queensland 2004–2005: a Statewide Landcover and Trees Study (SLATS) Report, Feb, 2007. Department of Natural Resources and Water, Brisbane.

Please refer to this report for further background, methods and explanatory notes.



The QLD Government supports and encourages the dissemination and exchange of information. However, copyright protects this document. The State of Queensland has no objection to this material being reproduced, made available online or electronically, provided it is for your personal, non-commercial use, or use within your organisation; the material remains unaltered; and the State of Queensland is recognised as the owner.

© The State of Queensland 2007.

For further information:  
 Statewide Landcover and Trees Study  
 80 Meiers Road  
 Indooroopilly QLD 4068  
 Phone: 61 7 3896 9605  
 Email: [geoinfo@nrw.qld.gov.au](mailto:geoinfo@nrw.qld.gov.au)  
 Web site: <http://www.nrw.qld.gov.au/slats>