



Land Cover Change in the **South West** Natural Resource Management Region **2004–2005**

Summary

The woody vegetation clearing rate for 2004–2005 for the South West region was 123,380 ha/year.



Figure 1. Woody vegetation clearing rates in the South West Natural Resource Management Region.

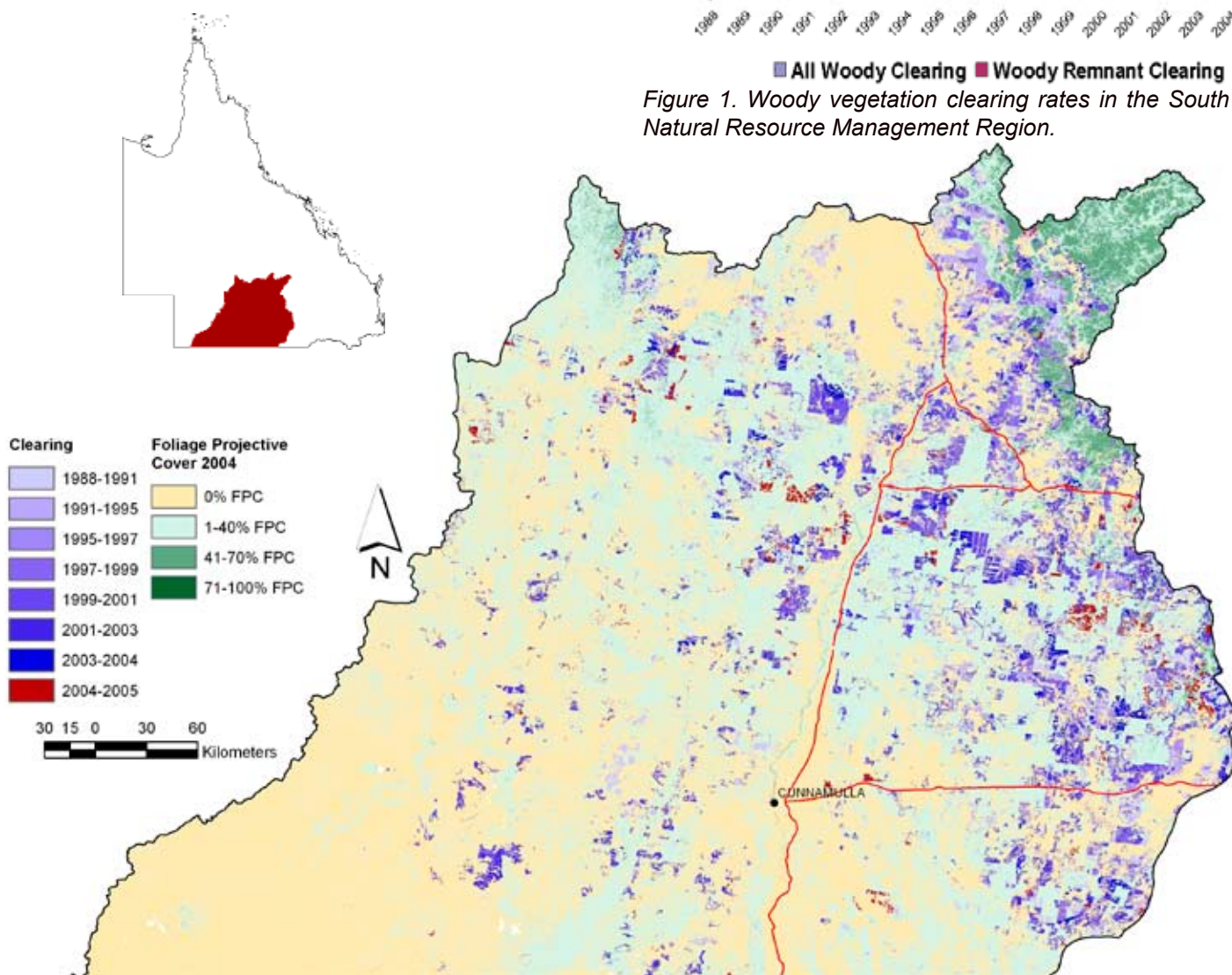


Figure 2. Woody vegetation clearing for each change period.

Woody Vegetation Clearing by Remnant Status

Table 1. Remnant and Non-remnant woody clearing rates in the South West Natural Resource Management Region.

Period	Woody vegetation clearing rate (,000ha/yr) of		
	Non-remnant woody	Remnant woody	Total woody
1999–2000	64.370	160.985	225.355
2000–2001	48.437	67.029	115.466
2001–2002	68.954	106.747	175.702
2002–2003	66.775	206.207	272.982
2003–2004	50.715	127.893	178.608
2004–2005	41.882	81.498	123.380

* Regional Ecosystem remnant mapping prior to 1999 not used in this analysis.

Woody Vegetation Clearing by Tenure

Table 2. Woody vegetation clearing rates in the South West Natural Resource Management Region by tenure.

Period	Woody vegetation clearing rate (,000ha/yr) on				
	Freehold	Leasehold	Reserves	Other Tenures	Total
1988–1991	50.519	73.691	0.276	1.888	126.374
1991–1995	27.428	43.821	0.128	0.790	72.166
1995–1997	26.101	23.985	0.068	1.425	51.578
1997–1999	41.337	43.989	0.281	1.296	86.902
1999–2000	142.170	83.024	0.161	0.000	225.355
2000–2001	60.054	55.399	0.012	0.000	115.465
2001–2002	79.841	95.501	0.359	0.000	175.702
2002–2003	146.555	126.391	0.018	0.000	272.963
2003–2004	95.407	83.057	0.145	0.000	178.609
2004–2005	58.102	65.192	0.086	0.000	123.380

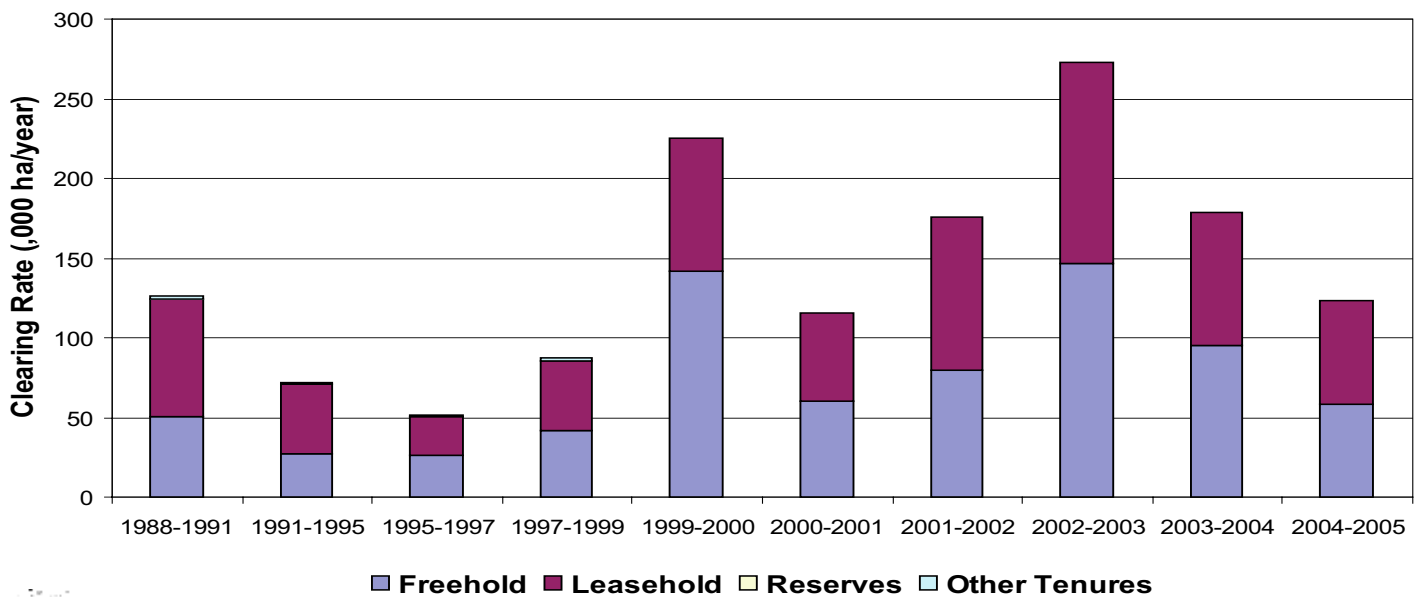


Figure 3. Woody vegetation clearing rates in the South West Natural Resource Management Region by tenure.

South West NRM Region, 33% of the freehold tenure and 61% is leasehold (based on the 2001 DCDB).

Woody Vegetation Clearing by Subcatchment

Table 3. Woody vegetation clearing rates in the South West Natural Resource Management Region by subcatchment #.

Period	Woody vegetation clearing rate (,000ha/yr) for					
	Bulloo River	Mungallala Creek	Neebine Creek	Paroo River	Warrego River	Total
1988–1991	7.642	45.800	9.983	9.130	53.795	126.350
1991–1995	1.016	21.716	16.118	2.478	30.846	72.172
1995–1997	1.033	18.167	4.862	1.727	25.774	51.562
1997–1999	0.872	21.665	7.470	1.462	55.421	86.890
1999–2000	3.735	65.958	12.024	3.826	139.802	225.345
2000–2001	0.618	47.496	20.416	5.899	41.016	115.445
2001–2002	13.254	52.327	29.124	18.377	62.569	175.651
2002–2003	21.703	85.448	68.953	40.255	56.591	272.951
2003–2004	12.665	49.778	24.667	16.292	75.206	178.608
2004–2005	10.937	47.033	5.063	6.682	53.664	123.380

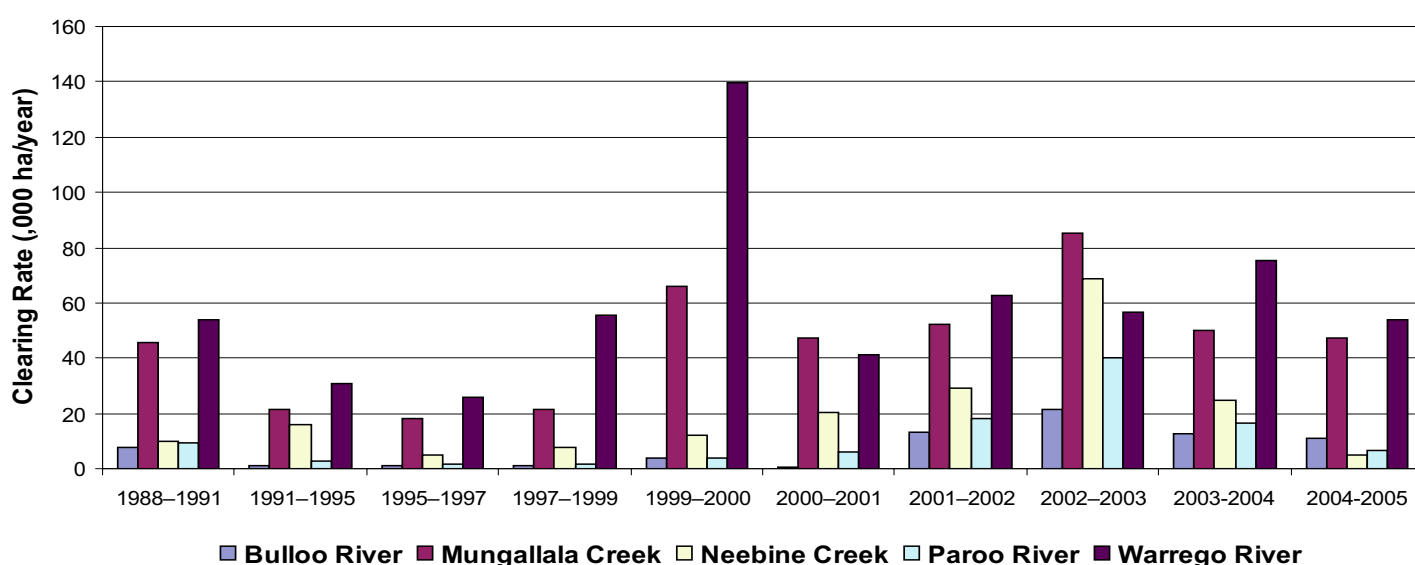


Figure 4. Woody vegetation clearing rates in the South West Natural Resource Management Region by subcatchment #.

Please refer to Figure 24 of the main report (NRW, 2007) for the location of each subcatchment.

Remaining Woody Vegetation

Table 4. Remaining woody vegetation in the South West Natural Resource Management Region by subcatchment.

,000 ha	Bulloo River	Mungallala Creek	Neebine Creek	Paroo River	Warrego River	Total
Catchment area	5186	2902	1803	3654	5167	18714
Area woody 2004	1680	1380	945	1672	2783	8460
% of catchment woody in 2004	32	48	52	46	54	45

Woody Vegetation Clearing by Replacement Landcover

Table 5. Woody vegetation clearing rates in the South West Natural Resource Management Region by replacement landcover.

Period	Woody vegetation clearing rate (,000ha/yr) for						Total*
	Pasture	Crop	Forestry	Mining	Infrastructure	Settlement	
1988–1991	123.635	0.000	0.000	0.000	2.749	0.001	126.385
1991–1995	71.740	0.000	0.015	0.001	0.432	0.000	72.188
1995–1997	50.252	0.000	0.015	0.000	1.323	0.000	51.590
1997–1999	85.278	0.095	0.165	0.000	1.362	0.003	86.904
1999–2000	223.540	0.000	0.004	0.000	1.810	0.002	225.355
2000–2001	114.103	0.011	0.000	0.000	1.352	0.000	115.466
2001–2002	175.467	0.000	0.000	0.000	0.235	0.000	175.702
2002–2003	272.735	0.000	0.000	0.000	0.247	0.000	272.982
2003–2004	178.354	0.000	0.000	0.000	0.254	0.000	178.608
2004–2005	122.309	0.000	0.074	0.000	0.997	0.001	123.380

* total excludes natural tree death

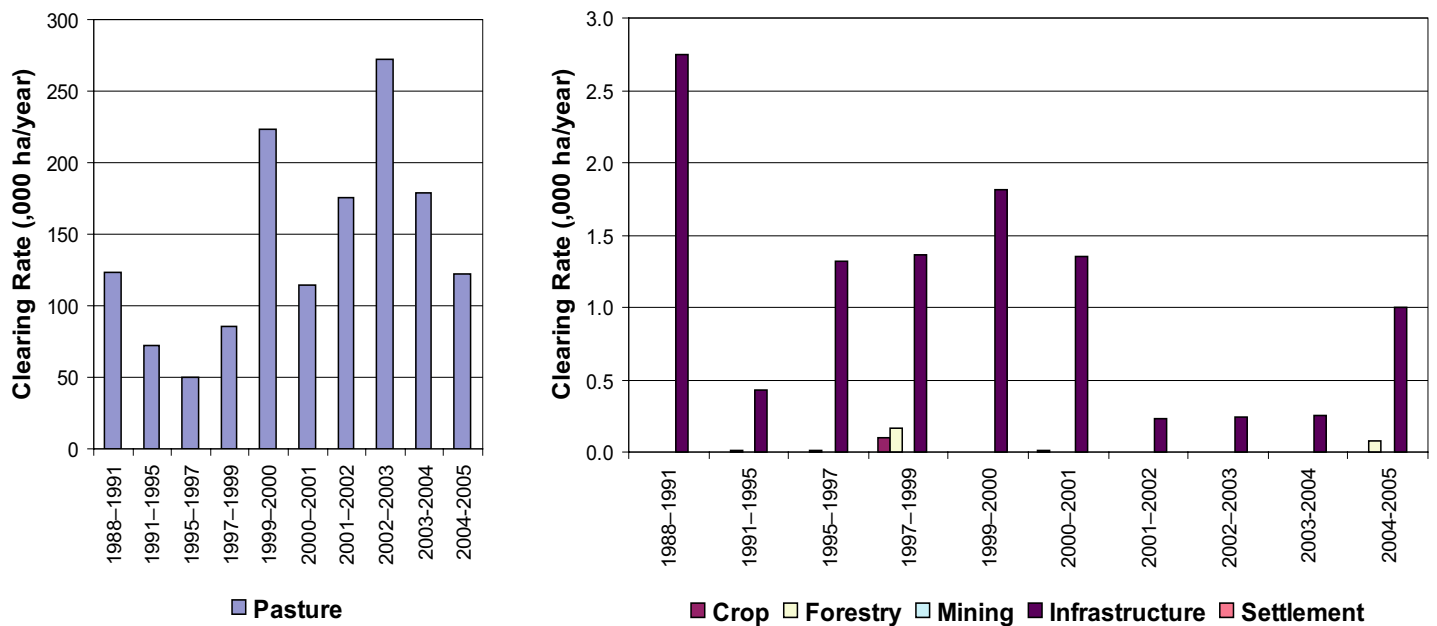
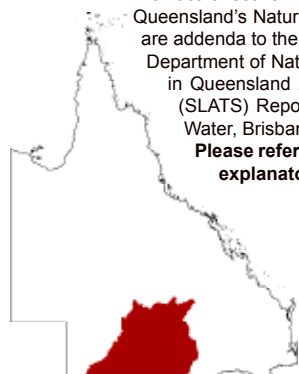


Figure 5. Woody vegetation clearing rates in the South West Natural Resource Management Region by replacement landcover.

This fact sheet is 12 of 14 in a series detailing land cover change in Queensland's Natural Resource Management Regions. These fact sheets are addenda to the report:

Department of Natural Resources and Water (2007). Land cover change in Queensland 2004–2005: a Statewide Landcover and Trees Study (SLATS) Report, Feb, 2007. Department of Natural Resources and Water, Brisbane.

Please refer to this report for further background, methods and explanatory notes.



The QLD Government supports and encourages the dissemination and exchange of information. However, copyright protects this document. The State of Queensland has no objection to this material being reproduced, made available online or electronically, provided it is for your personal, non-commercial use, or use within your organisation; the material remains unaltered; and the State of Queensland is recognised as the owner.

© The State of Queensland 2007.

For further information:
 Statewide Landcover and Trees Study
 80 Meiers Road
 Indooroopilly QLD 4068
 Phone: 61 7 3896 9605
 Email: geoinfo@nrw.qld.gov.au
 Web site: <http://www.nrw.qld.gov.au/slats>