



# Land Cover Change in the **SEQ** Natural Resource Management Region **2004–2005**

## Summary

The woody vegetation clearing rate for 2004–2005 was the lowest rate recorded for the South East Queensland region since satellite monitoring began. The 2004–2005 woody vegetation clearing rate was 5,498 ha/year.

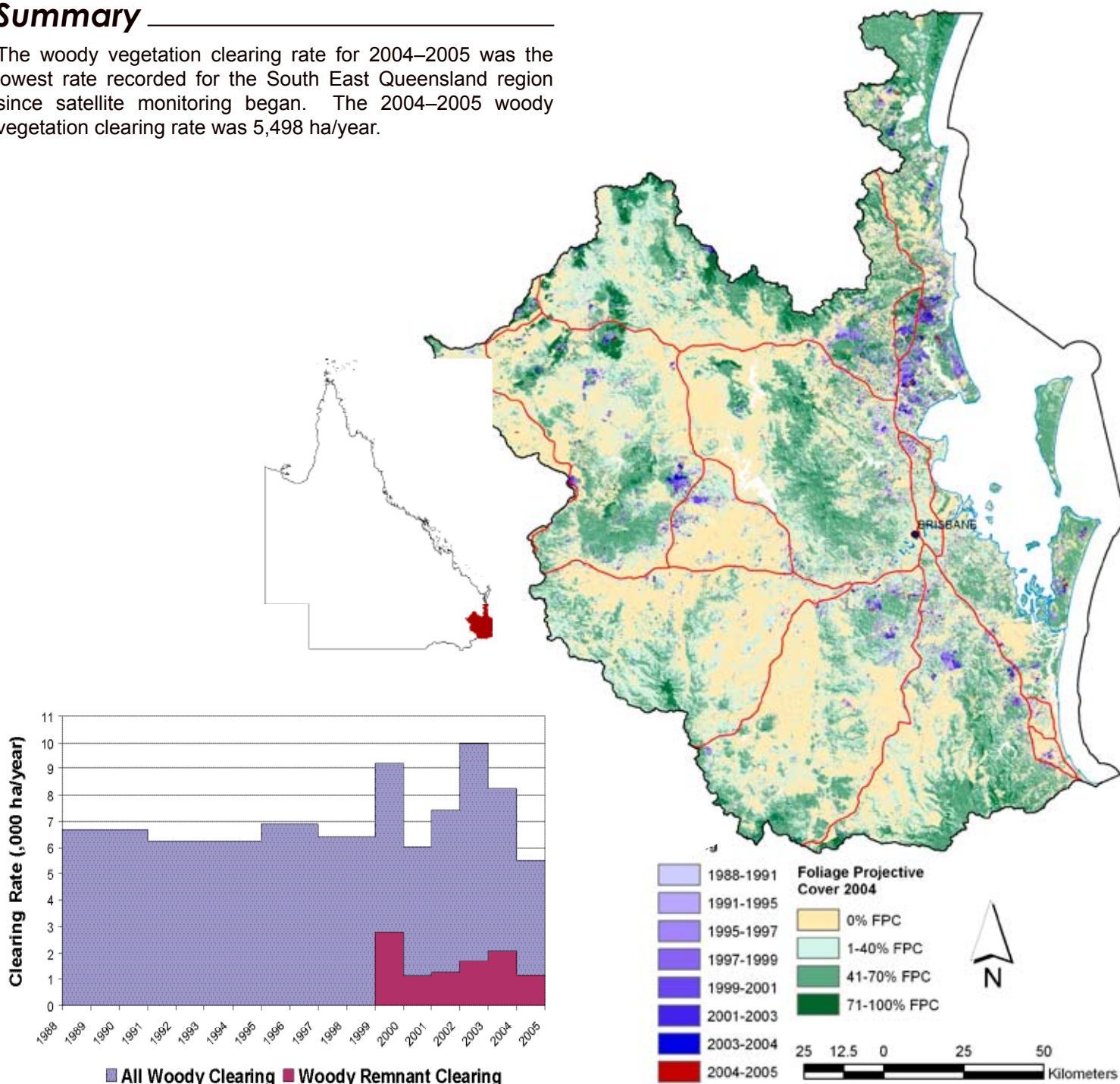


Figure 1. Woody vegetation clearing rates in the SEQ Natural Resource Management Region.

Figure 2. Woody vegetation clearing for each change period.

## Woody Vegetation Clearing by Remnant Status

Table 1. Remnant and Non-remnant woody clearing rates in the SEQ Natural Resource Management Region.

Period	Woody vegetation clearing rate (,000ha/yr) of		
	Non-remnant woody	Remnant woody	Total woody
1999–2000	6.433	2.767	9.201
2000–2001	4.863	1.145	6.008
2001–2002	6.150	1.262	7.411
2002–2003	8.254	1.715	9.969
2003–2004	6.203	2.063	8.265
2004–2005	4.336	1.162	5.498

\* Regional Ecosystem remnant mapping prior to 1999 not used in this analysis.

## Woody Vegetation Clearing by Tenure

Table 2. Woody vegetation clearing rates in the SEQ Natural Resource Management Region by tenure.

Period	Woody vegetation clearing rate (,000ha/yr) on				
	Freehold	Leasehold	Reserves	Other Tenures	Total
1988–1991	5.402	0.522	0.711	0.028	6.663
1991–1995	4.192	0.456	1.540	0.019	6.207
1995–1997	5.295	0.535	1.064	0.016	6.910
1997–1999	4.408	0.856	1.079	0.019	6.361
1999–2000	7.450	0.812	0.918	0.020	9.200
2000–2001	5.091	0.395	0.495	0.026	6.007
2001–2002	5.589	0.318	1.437	0.064	7.408
2002–2003	8.128	0.445	1.315	0.081	9.969
2003–2004	6.415	0.600	1.172	0.020	8.206
2004–2005	4.059	0.585	0.844	0.010	5.498

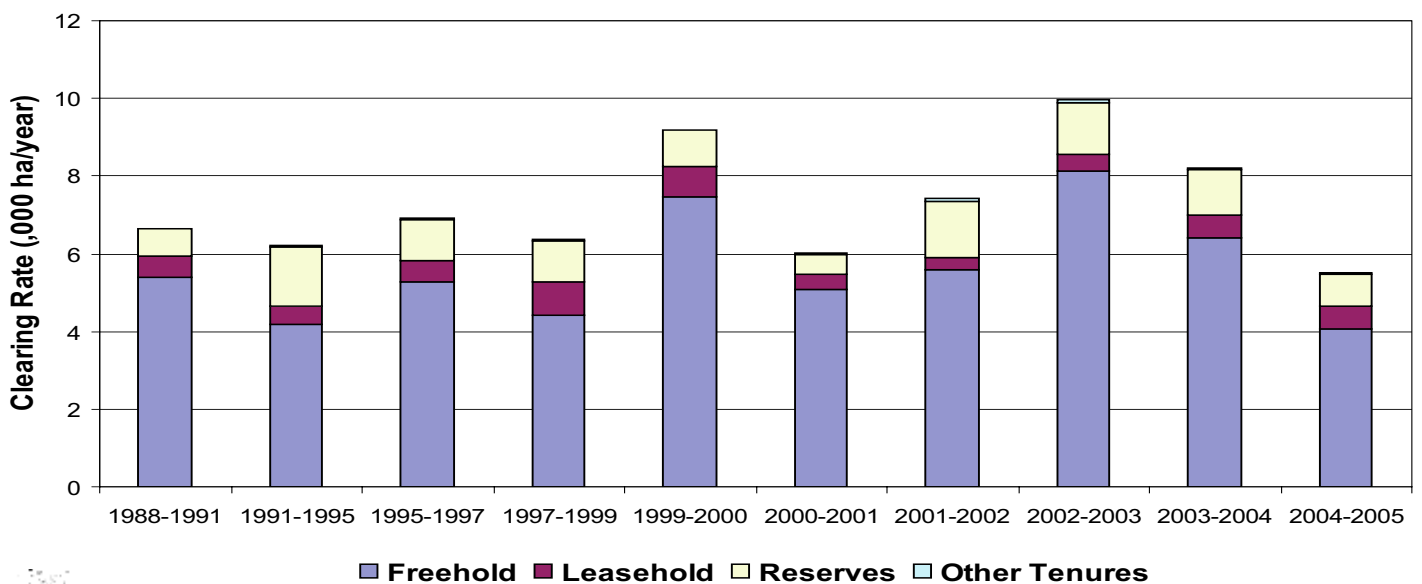
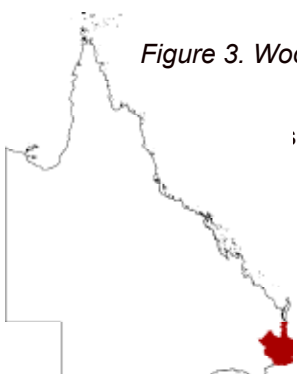


Figure 3. Woody vegetation clearing rates in the SEQ Natural Resource Management Region by tenure.

the clearing on reserves is for forestry



## Woody Vegetation Clearing by Subcatchment

Table 3. Woody vegetation clearing rates in the SEQ Natural Resource Management Region by subcatchment #.

Period	Woody vegetation clearing rate (,000ha/yr) for							
	Albert River	Bremer River	Bribie Island	Brisbane River	Caboolture River	Coomera River	Lockyer River	Logan River
1988–1991	0.067	0.205	0.038	1.350	0.785	0.496	0.654	0.937
1991–1995	0.077	0.158	0.117	0.676	0.636	0.228	0.218	0.598
1995–1997	0.096	0.253	0.185	1.146	0.622	0.311	0.580	0.762
1997–1999	0.086	0.262	0.807	1.293	0.303	0.379	0.506	0.730
1999–2000	0.111	0.147	0.303	2.271	0.719	0.488	1.446	0.777
2000–2001	0.109	0.088	1.063	0.832	0.535	0.279	0.911	0.349
2001–2002	0.321	0.154	0.261	1.934	0.232	0.605	0.697	0.633
2002–2003	0.330	0.561	0.041	2.166	0.657	1.080	0.605	1.432
2003–2004	0.214	0.166	0.012	2.179	0.865	0.784	0.800	0.765
2004–2005	0.071	0.234	0.208	1.465	0.368	0.255	0.540	0.463

Table 3. continued

Period	Woody vegetation clearing rate (,000ha/yr) for							
	Maroochy River	Moreton Island	Noosa River	North Pine River	South Pine River	Stanley River	Stradbroke Islands	Total
1988–1991	1.005	0.000	0.162	0.319	0.199	0.312	0.126	6.655
1991–1995	2.026	0.000	0.208	0.307	0.132	0.681	0.146	6.207
1995–1997	1.585	0.000	0.532	0.221	0.096	0.366	0.154	6.909
1997–1999	1.093	0.005	0.173	0.115	0.135	0.356	0.119	6.362
1999–2000	1.684	0.000	0.125	0.222	0.121	0.491	0.269	9.176
2000–2001	1.034	0.000	0.231	0.224	0.076	0.224	0.042	5.995
2001–2002	1.801	0.002	0.258	0.139	0.051	0.174	0.143	7.405
2002–2003	1.732	0.002	0.389	0.317	0.152	0.340	0.155	9.957
2003–2004	1.490	0.002	0.270	0.256	0.097	0.204	0.160	8.265
2004–2005	1.023	0.001	0.277	0.150	0.064	0.182	0.192	5.498

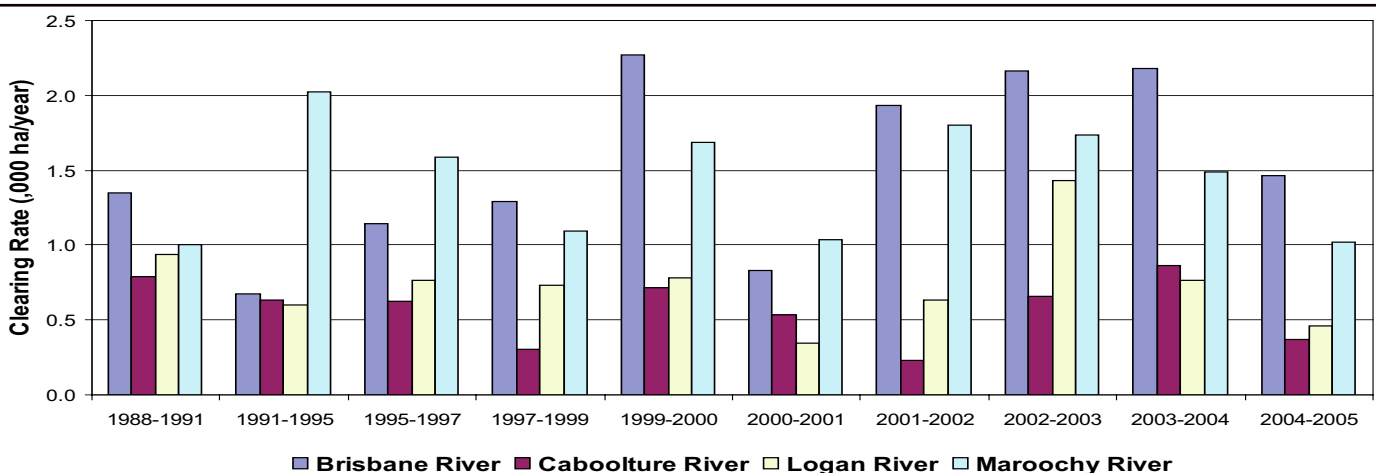


Figure 4. Woody vegetation clearing rates in the SEQ Natural Resource Management Region by subcatchment #.

# Please refer to Figure 24 of the main report (NRW, 2007) for the location of each subcatchment.

## Remaining Woody Vegetation

Table 4. Remaining woody vegetation in the SEQ Catchments Natural Resource Management Region by subcatchment.

,000 ha	Albert River	Bremer River	Bribie Island	Brisbane River	Caboolture River	Coomera River	Lockyer River	Logan River
Catchment area	78	203	15	697	47	130	301	337
Area woody 2004	51	98	11	424	28	87	179	202
% of catchment woody in 2004	65	48	78	61	59	67	59	60

Table 4. continued

,000 ha	Maroochy River	Moreton Island	Noosa River	North Pine River	South Pine River	Stanley River	Stradbroke Island	Total
Catchment area	139	17	96	60	42	154	29	2345
Area woody 2004	90	15	75	41	29	100	21	1451
% of catchment woody in 2004	65	85	78	68	68	65	74	62

## Woody Vegetation Clearing by Replacement Landcover

Table 5. Woody vegetation clearing rates in the SEQ Natural Resource Management Region by replacement landcover.

Period	Woody vegetation clearing rate (,000ha/yr) for						Total*
	Pasture	Crop	Forestry	Mining	Infrastructure	Settlement	
1988–1991	2.858	0.322	0.786	0.192	0.219	2.295	6.673
1991–1995	1.970	0.237	1.894	0.097	0.083	1.946	6.228
1995–1997	3.330	0.330	1.143	0.175	0.142	1.800	6.920
1997–1999	1.980	0.216	2.447	0.204	0.322	1.203	6.373
1999–2000	4.455	0.078	2.525	0.316	0.393	1.433	9.201
2000–2001	2.164	0.030	2.653	0.066	0.143	0.952	6.008
2001–2002	3.426	0.012	2.319	0.134	0.137	1.383	7.411
2002–2003	4.296	0.021	2.050	0.176	0.280	3.138	9.960
2003–2004	3.145	0.034	1.685	0.201	0.235	2.965	8.265
2004–2005	2.849	0.000	1.228	0.194	0.151	1.076	5.498

\* total excludes natural tree death

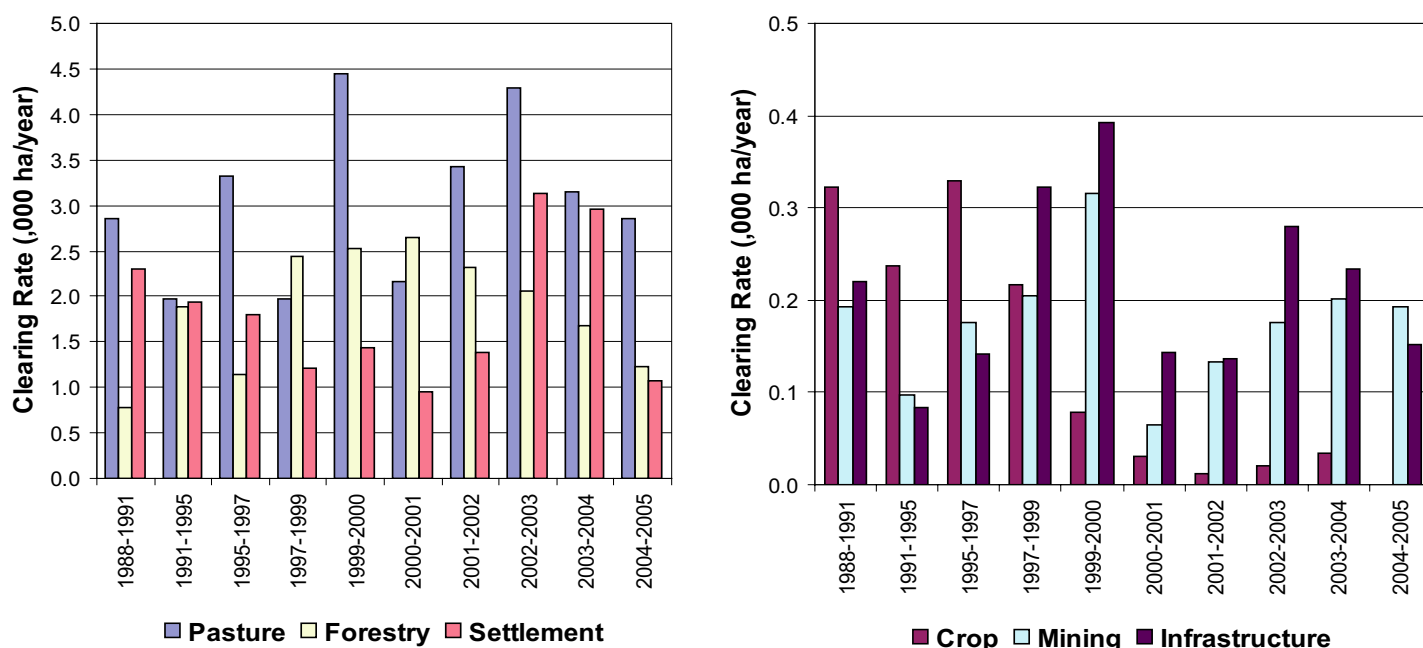


Figure 5. Woody vegetation clearing rates in the SEQ Natural Resource Management Region by replacement landcover.

This fact sheet is 11 of 14 in a series detailing land cover change in Queensland's Natural Resource Management Regions. These fact sheets are addenda to the report:

Department of Natural Resources and Water (2007). Land cover change in Queensland 2004–2005: a Statewide Landcover and Trees Study (SLATS) Report, Feb, 2007. Department of Natural Resources and Water, Brisbane.

Please refer to this report for further background, methods and explanatory notes.

The QLD Government supports and encourages the dissemination and exchange of information. However, copyright protects this document. The State of Queensland has no objection to this material being reproduced, made available online or electronically, provided it is for your personal, non-commercial use, or use within your organisation; the material remains unaltered; and the State of Queensland is recognised as the owner.

© The State of Queensland 2007 .

For further information:  
 Statewide Landcover and Trees Study  
 80 Meiers Road  
 Indooroopilly QLD 4068  
 Phone: 61 7 3896 9605  
 Email: [geoinfo@nrw.qld.gov.au](mailto:geoinfo@nrw.qld.gov.au)  
 Web site: <http://www.nrw.qld.gov.au/slats>