



Land Cover Change in the **Northern Gulf** Natural Resource Management Region **2004–2005**

Summary

The woody vegetation clearing rate for 2004–2005 for the Northern Gulf region was 1,878 ha/year.

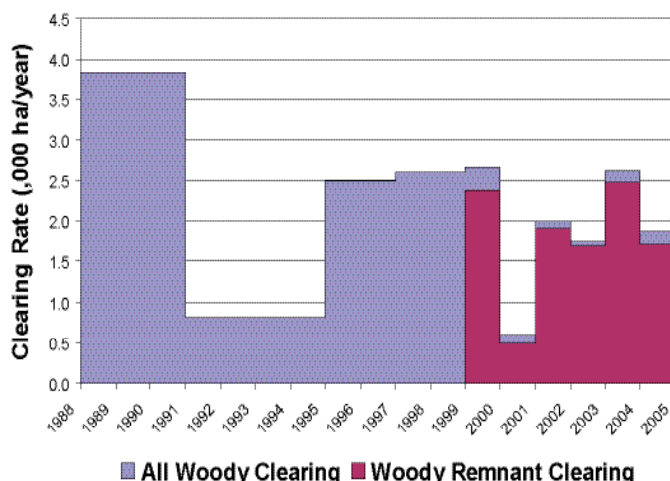


Figure 1. Woody vegetation clearing rates in the Northern Gulf Natural Resource Management Region.

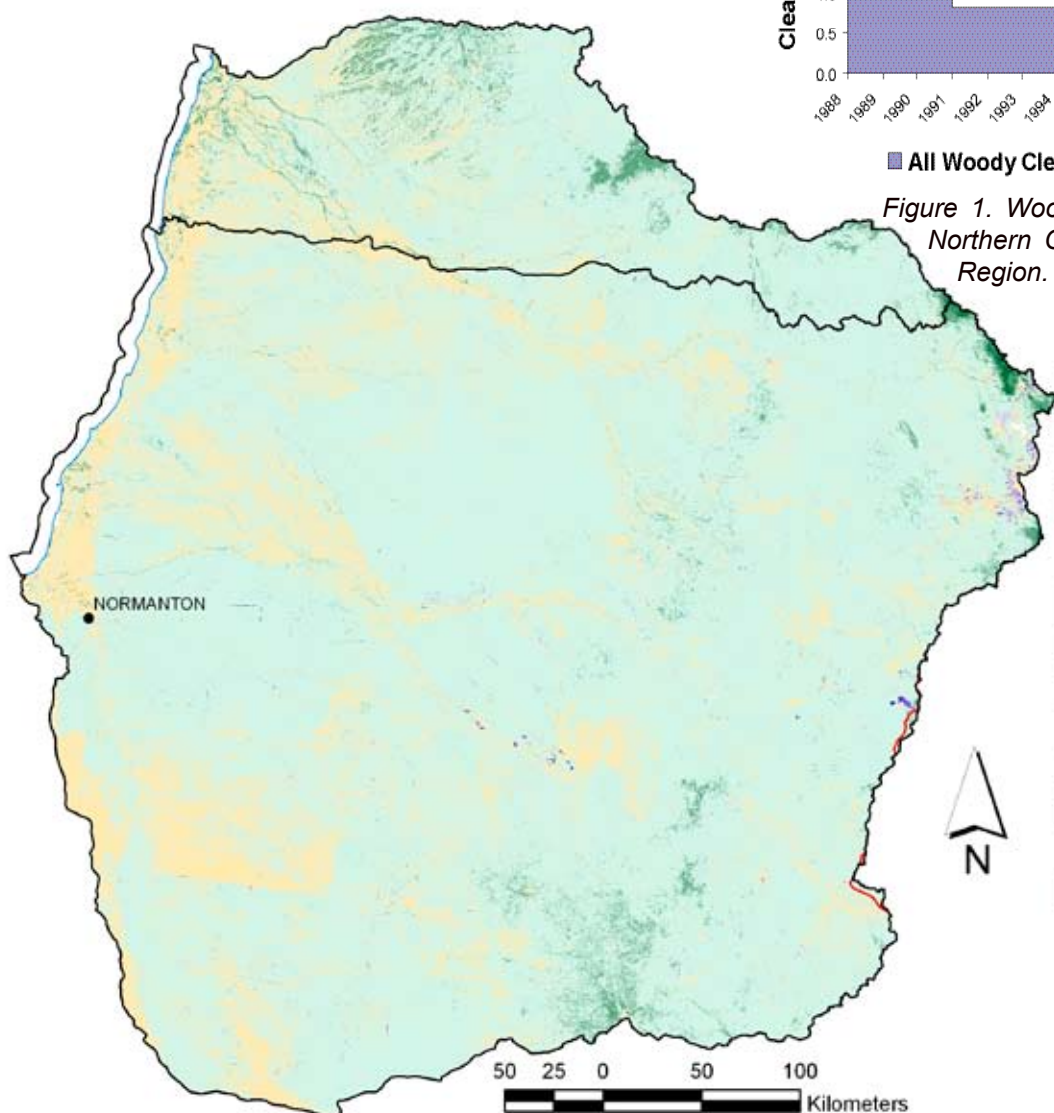


Figure 2. Woody vegetation clearing for each change period.



Woody Vegetation Clearing by Remnant Status

Table 1. Remnant and Non-remnant woody clearing rates in the Northern Gulf Natural Resource Management Region.

Period	Woody vegetation clearing rate (,000ha/yr) of		
	Non-remnant woody	Remnant woody*	Total woody
1999–2000	0.298	2.370	2.668
2000–2001	0.094	0.501	0.595
2001–2002	0.089	1.910	1.998
2002–2003	0.051	1.702	1.753
2003–2004	0.142	2.473	2.615
2004–2005	0.161	1.717	1.878

* Regional Ecosystem remnant mapping prior to 1999 not used in this analysis.

Woody Vegetation Clearing by Tenure

Table 2. Woody vegetation clearing rates in the Northern Gulf Natural Resource Management Region by tenure.

Period	Woody vegetation clearing rate (,000ha/yr) on				
	Freehold	Leasehold	Reserves	Other Tenures	Total
1988–1991	1.651	2.138	0.016	0.036	3.841
1991–1995	0.514	0.260	0.008	0.028	0.810
1995–1997	0.927	1.492	0.042	0.025	2.487
1997–1999	0.807	1.739	0.033	0.018	2.596
1999–2000	1.012	1.612	0.022	0.022	2.668
2000–2001	0.202	0.371	0.017	0.006	0.595
2001–2002	0.138	1.854	0.002	0.004	1.998
2002–2003	0.129	1.622	0.000	0.002	1.753
2003–2004	0.235	2.365	0.015	0.000	2.615
2004–2005	0.042	1.835	0.001	0.000	1.878

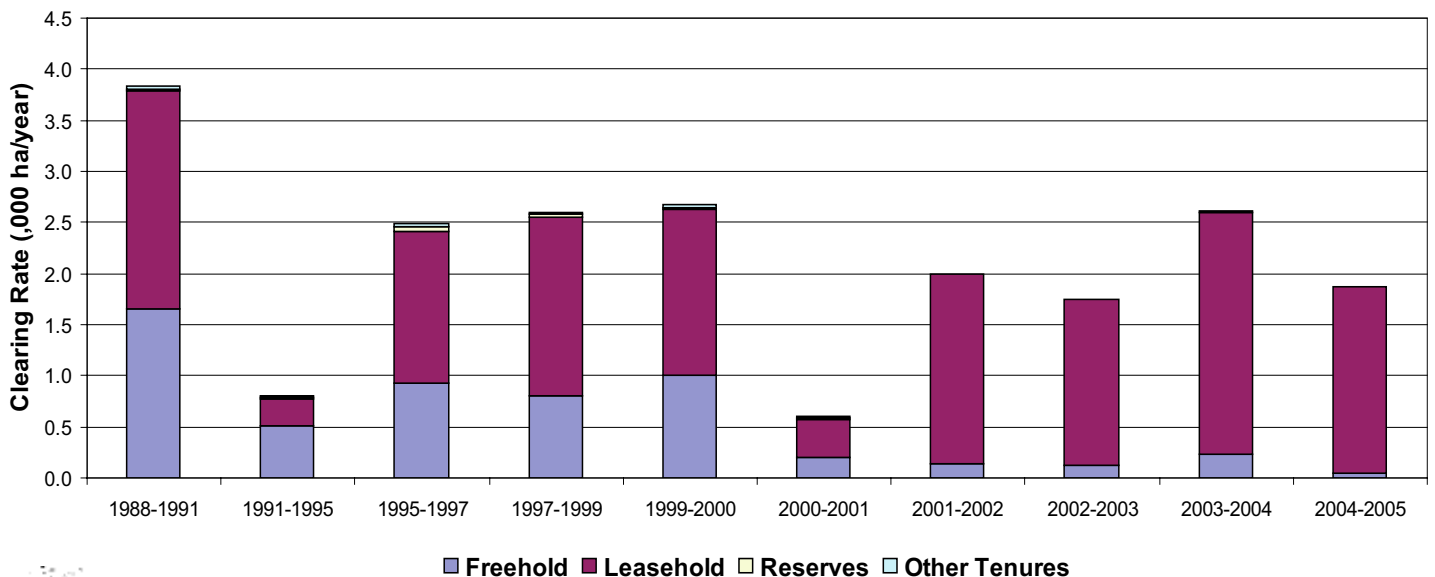
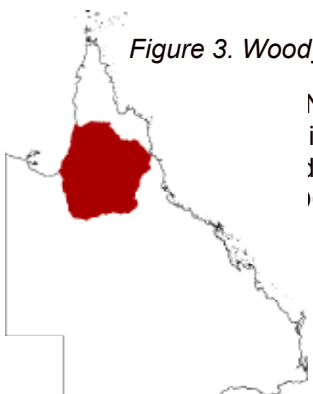


Figure 3. Woody vegetation clearing rates in the Northern Gulf Natural Resource Management Region by tenure.

Northern Gulf NRM Region, 2% of is freehold tenure, 93% is leasehold 14% is reserves tenure (based on the ICDB).



Woody Vegetation Clearing by Subcatchment

Table 3. Woody vegetation clearing rates in the Northern Gulf Natural Resource Management Region by subcatchment #.

Period	Woody vegetation clearing rate (,000ha/yr) for									
	Einasleigh River	Lower Gilbert River	Lower Norman River	Mitchell River	Staaten River	Upper Gilbert River	Upper Norman River	Walsh River	Palmer River	Total
1988–1991	0.509	0.000	0.022	1.655	0.031	0.202	0.844	0.495	0.080	3.839
1991–1995	0.002	0.000	0.000	0.258	0.000	0.010	0.000	0.506	0.029	0.812
1995–1997	0.097	0.000	0.005	0.910	0.003	0.022	0.333	0.864	0.135	2.486
1997–1999	0.084	0.000	0.011	0.765	0.336	0.119	0.228	0.747	0.095	2.598
1999–2000	0.084	0.000	0.028	0.883	0.034	0.690	0.390	0.524	0.021	2.667
2000–2001	0.174	0.000	0.000	0.185	0.000	0.172	0.000	0.065	0.000	0.595
2001–2002	0.395	0.000	0.017	0.528	0.084	0.197	0.478	0.160	0.107	1.997
2002–2003	0.289	0.000	0.013	0.396	0.011	0.107	0.788	0.057	0.059	1.752
2003–2004	0.133	0.012	0.022	0.504	0.179	0.546	0.969	0.147	0.035	2.614
2004–2005	0.149	0.008	0.005	0.321	0.133	0.063	0.705	0.283	0.147	1.878

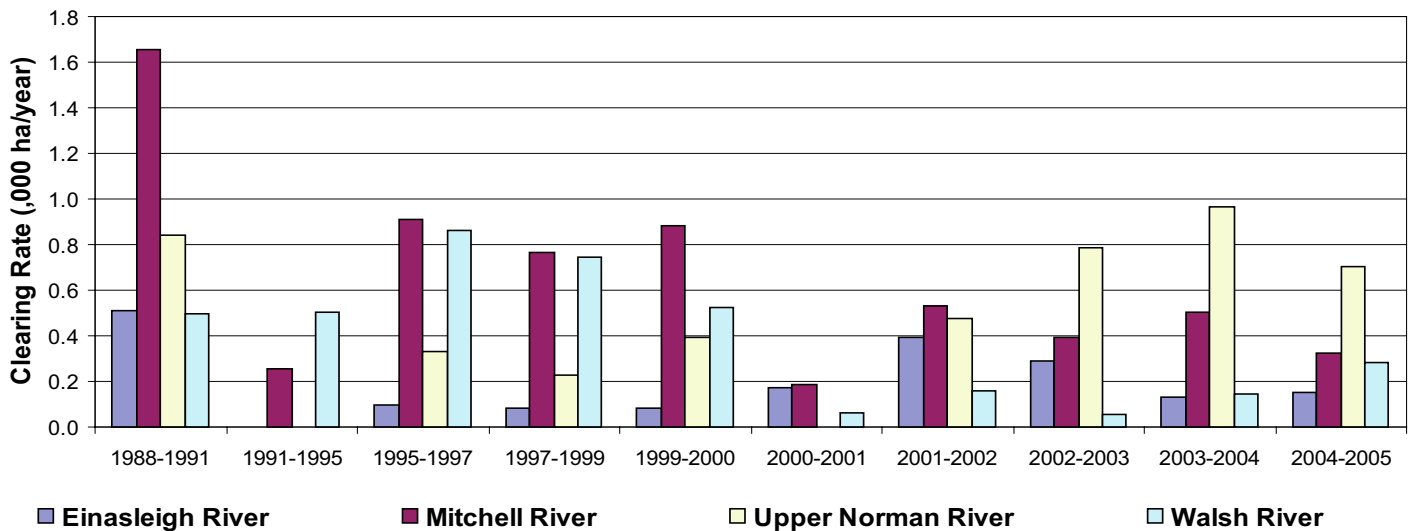


Figure 4. Woody vegetation clearing rates in the Northern Gulf Natural Resource Management Region by subcatchment #.

Please refer to Figure 24 of the main report (NRW, 2007) for the location of each subcatchment.

Remaining Woody Vegetation

Table 4. Remaining woody vegetation in the Northern Gulf Natural Resource Management Region by subcatchment.

,000 ha	Einasleigh River	Lower Gilbert River	Lower Norman River	Mitchell River	Staaten River	Upper Gilbert River	Upper Norman River	Walsh River	Palmer River	Total
Catchment area	2437	374	465	4125	2576	1365	5042	896	832	19406
Area woody 2004	2191	245	287	3370	2244	1249	3953	782	787	16241
% of catchment woody in 2004	90	65	62	82	87	91	78	87	95	84

Woody Vegetation Clearing by Replacement Landcover

Table 5. Woody vegetation clearing rates in the Northern Gulf Natural Resource Management Region by replacement landcover.

Period	Woody vegetation clearing rate (,000ha/yr) for						Total*
	Pasture	Crop	Forestry	Mining	Infrastructure	Settlement	
1988–1991	1.696	0.432	0.000	0.104	1.608	0.000	3.841
1991–1995	0.100	0.633	0.000	0.021	0.058	0.000	0.812
1995–1997	0.501	1.065	0.000	0.119	0.787	0.015	2.488
1997–1999	0.957	0.495	0.055	0.051	1.041	0.000	2.599
1999–2000	1.302	0.264	0.013	0.008	1.081	0.000	2.668
2000–2001	0.198	0.089	0.000	0.003	0.305	0.000	0.595
2001–2002	0.680	0.046	0.000	0.005	1.268	0.000	1.998
2002–2003	0.628	0.013	0.000	0.001	1.111	0.000	1.753
2003–2004	1.808	0.000	0.000	0.000	0.807	0.000	2.615
2004–2005	0.890	0.005	0.000	0.002	0.981	0.000	1.878

* total excludes natural tree death

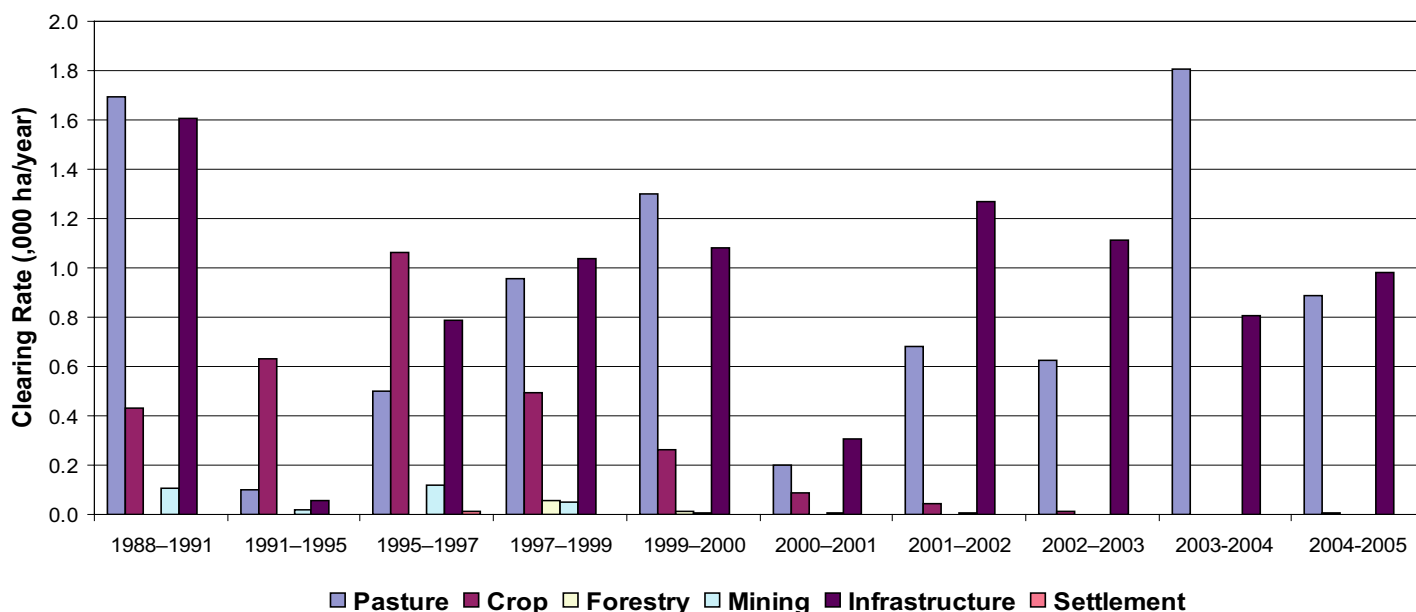
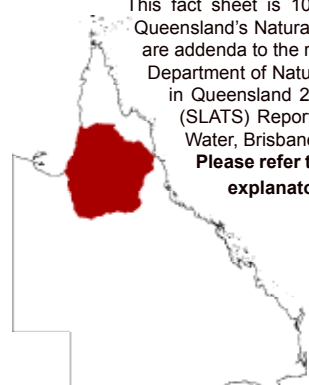


Figure 5. woody vegetation clearing rates in the Northern Gulf Natural Resource Management Region by replacement

This fact sheet is 10 of 14 in a series detailing land cover change in Queensland's Natural Resource Management Regions. These fact sheets are addenda to the report:

Department of Natural Resources and Water (2007). Land cover change in Queensland 2004–2005: a Statewide Landcover and Trees Study (SLATS) Report, Feb, 2007. Department of Natural Resources and Water, Brisbane.

Please refer to this report for further background, methods and explanatory notes.



The QLD Government supports and encourages the dissemination and exchange of information. However, copyright protects this document. The State of Queensland has no objection to this material being reproduced, made available online or electronically, provided it is for your personal, non-commercial use, or use within your organisation; the material remains unaltered; and the State of Queensland is recognised as the owner.

© The State of Queensland 2007.

For further information:
 Statewide Landcover and Trees Study
 80 Meiers Road
 Indooroopilly QLD 4068
 Phone: 61 7 3896 9605
 Email: geoinfo@nrw.qld.gov.au
 Web site: <http://www.nrw.qld.gov.au/slats>