



# Land Cover Change in the **Maranoa-Balonne** Natural Resource Management Region **2004–2005**

## Summary

The woody vegetation clearing rate for 2004–2005 was the third lowest rate recorded for the Maranoa-Balonne region since satellite monitoring began. The 2004–2005 woody vegetation clearing rate was 48,167 ha/year.

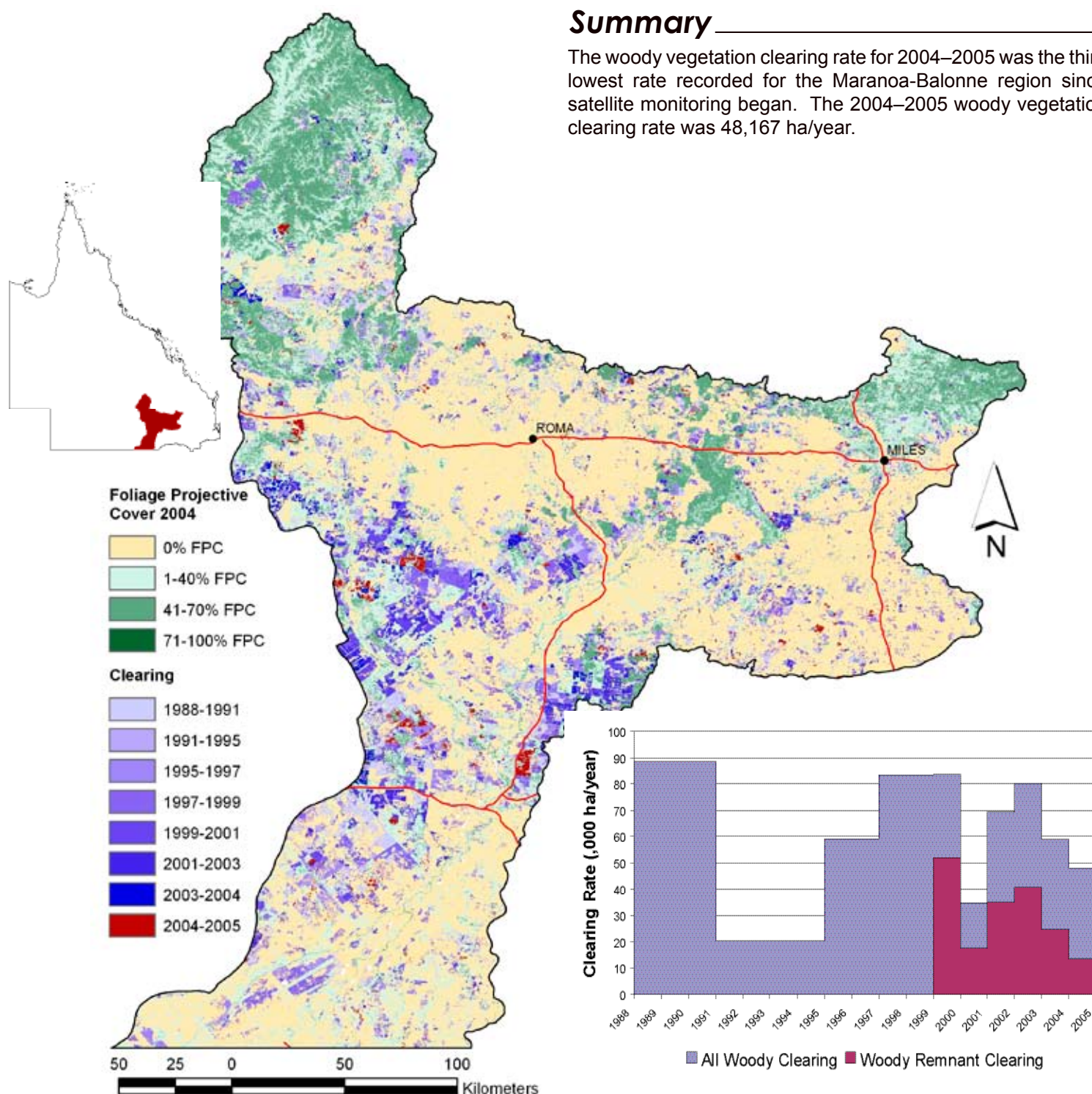


Figure 1. Woody vegetation clearing for each change period.

Figure 2. Woody vegetation clearing rates in the Maranoa-Balonne Natural Resource Management Region.

## Woody Vegetation Clearing by Remnant Status

Table 1. Remnant and Non-remnant woody clearing rates in the Maranoa-Balonne Natural Resource Management Region.

Period	Woody vegetation clearing rate (,000ha/yr) of		
	Non-remnant woody	Remnant woody*	Total woody
1999–2000	31.831	51.849	83.681
2000–2001	16.862	17.875	34.736
2001–2002	34.536	35.033	69.570
2002–2003	39.377	40.791	80.168
2003–2004	34.131	24.671	58.802
2004–2005	34.755	13.413	48.167

\* Regional Ecosystem remnant mapping prior to 1999 not used in this analysis.

## Woody Vegetation Clearing by Tenure

Table 2. Woody vegetation clearing rates in the Maranoa-Balonne Natural Resource Management Region by tenure.

Period	Woody vegetation clearing rate (,000ha/yr) on				Total
	Freehold	Leasehold	Reserves	Other Tenures	
1988–1991	58.738	29.278	0.616	0.006	88.638
1991–1995	12.414	7.884	0.182	0.004	20.484
1995–1997	45.991	12.939	0.148	0.006	59.084
1997–1999	62.590	20.103	0.652	0.035	83.381
1999–2000	68.663	14.914	0.088	0.016	83.681
2000–2001	23.754	10.847	0.135	0.000	34.736
2001–2002	52.716	16.721	0.131	0.001	69.569
2002–2003	67.064	12.727	0.376	0.000	80.167
2003–2004	37.208	21.012	0.582	0.000	58.802
2004–2005	36.614	10.403	1.149	0.000	48.167

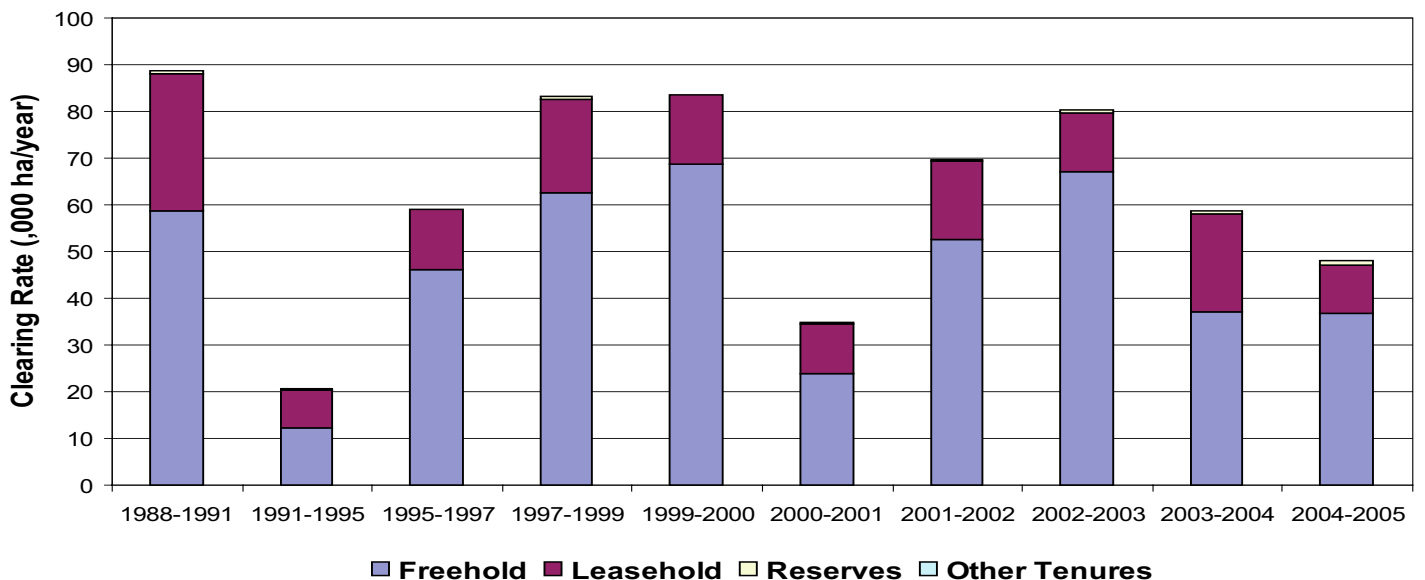


Figure 3. Woody vegetation clearing rates in the Maranoa-Balonne Natural Resource Management Region by tenure.

The Maranoa Balonne NRM Region, where the region is freehold tenure and 21% leasehold tenure (based on the 2001 Census of Land Use, Land Cover and Land Rights (CULLR)).

## Clearing by Subcatchment

Table 3. Woody vegetation clearing rates in the Maranoa-Balonne Natural Resource Management Region by subcatchment #.

Period	Woody vegetation clearing rate (,000ha/yr) for			
	Balonne River	Condamine River	Maranoa River	Total
1988–1991	46.663	4.886	37.059	88.608
1991–1995	11.469	1.450	7.554	20.472
1995–1997	43.000	3.171	12.895	59.067
1997–1999	56.535	6.006	20.804	83.345
1999–2000	52.320	6.741	24.571	83.632
2000–2001	18.081	0.732	15.888	34.701
2001–2002	40.063	1.942	27.520	69.525
2002–2003	51.939	3.662	24.497	80.098
2003–2004	24.497	2.364	31.933	58.795
2004–2005	22.345	3.627	22.194	48.167

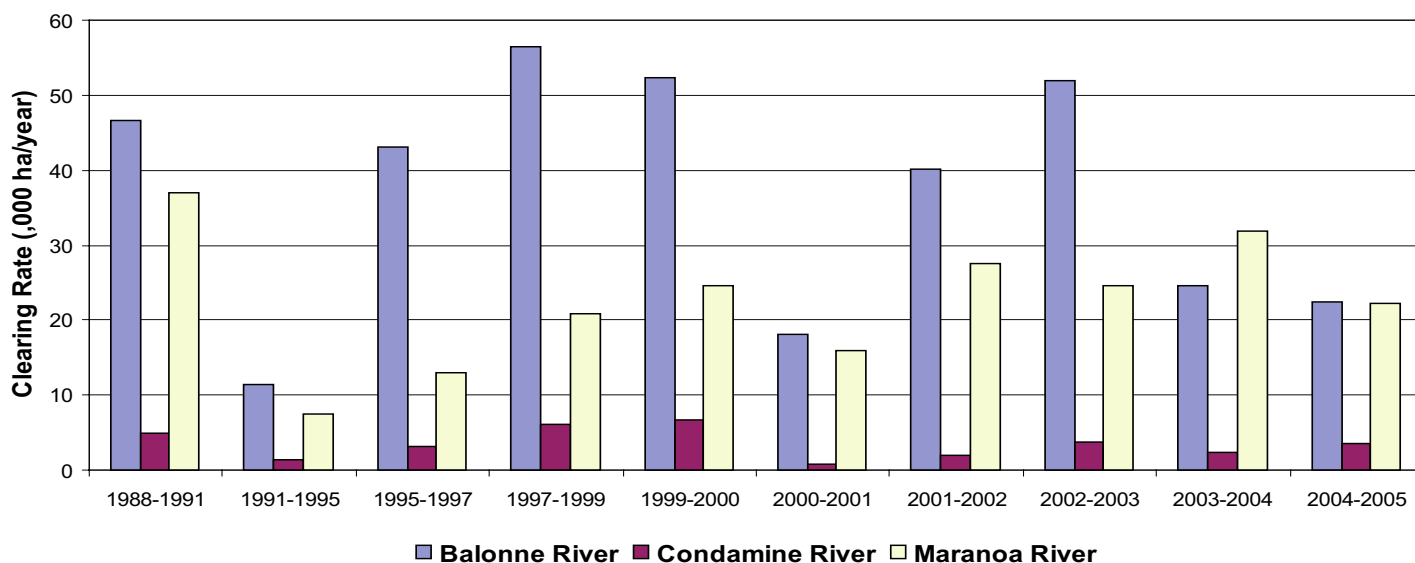


Figure 4. Woody vegetation clearing rates in the Maranoa-Balonne Natural Resource Management Region by subcatchment #.

# Please refer to Figure 24 of the main report (NRW, 2007) for the location of each subcatchment.

## Remaining Woody Vegetation

Table 4. Remaining woody vegetation in the Maranoa-Balonne Natural Resource Management Region by subcatchment.

,000 ha	Balonne River	Condamine River	Maranoa River	Total
Catchment area	3826	598	2004	6428
Area woody 2004	1268	86	1273	2628
% of catchment woody in 2004	33	14	64	41

# Woody Vegetation Clearing by Replacement Landcover

Table 5. Woody vegetation clearing rates in the Maranoa-Balonne Natural Resource Management Region by replacement landcover.

Period	Woody vegetation clearing rate (,000ha/yr) for						Total*
	Pasture	Crop	Forestry	Mining	Infrastructure	Settlement	
1988–1991	80.434	7.322	0.000	0.001	0.895	0.001	88.654
1991–1995	19.771	0.319	0.175	0.000	0.219	0.000	20.484
1995–1997	53.557	3.721	0.105	0.000	1.708	0.000	59.091
1997–1999	70.654	11.178	0.527	0.000	1.017	0.022	83.398
1999–2000	75.788	7.000	0.057	0.000	0.836	0.000	83.681
2000–2001	32.784	1.254	0.014	0.000	0.685	0.000	34.736
2001–2002	69.491	0.049	0.000	0.000	0.030	0.000	69.570
2002–2003	80.014	0.125	0.000	0.000	0.029	0.000	80.168
2003–2004	58.561	0.014	0.000	0.000	0.221	0.006	58.802
2004–2005	46.155	0.721	1.142	0.000	0.147	0.001	48.167

\* total excludes natural tree death

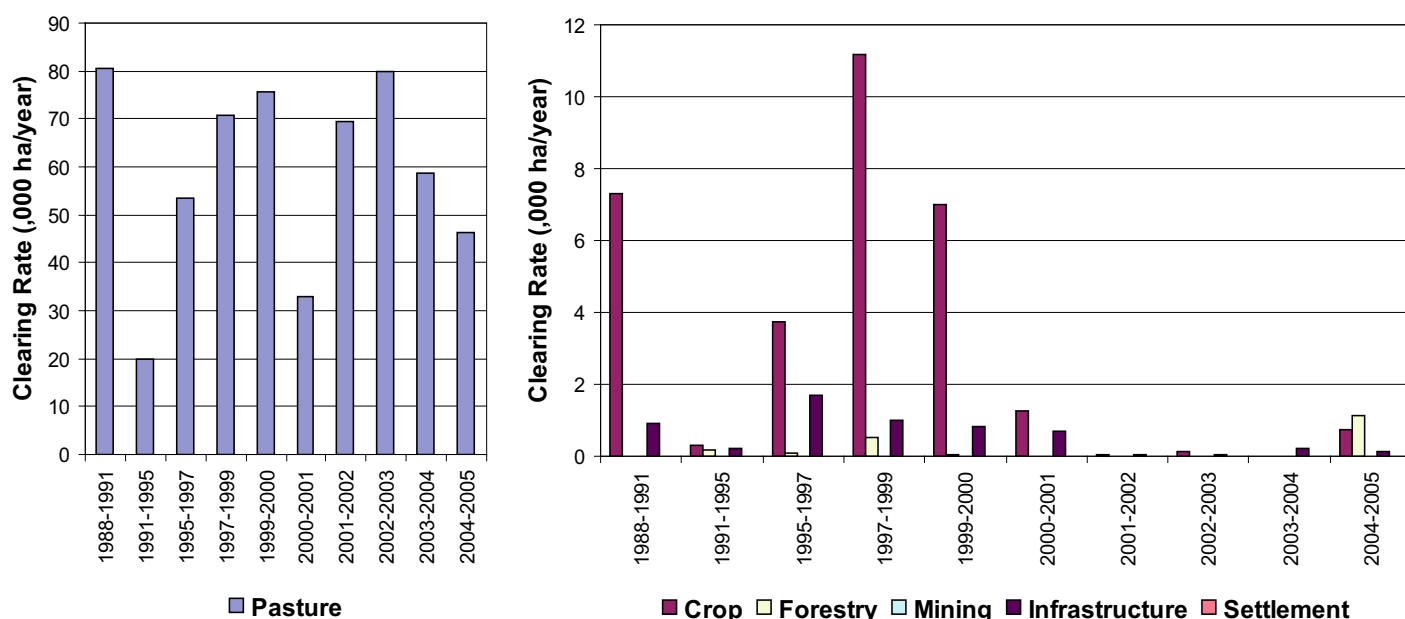
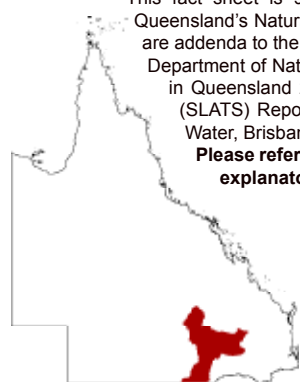


Figure 5. Woody vegetation clearing rates in the Maranoa-Balonne Natural Resource Management Region by replacement landcover.

This fact sheet is 9 of 14 in a series detailing land cover change in Queensland's Natural Resource Management Regions. These fact sheets are addenda to the report:

Department of Natural Resources and Water (2007). Land cover change in Queensland 2004–2005: a Statewide Landcover and Trees Study (SLATS) Report, Feb, 2007. Department of Natural Resources and Water, Brisbane.

Please refer to this report for further background, methods and explanatory notes.



The QLD Government supports and encourages the dissemination and exchange of information. However, copyright protects this document. The State of Queensland has no objection to this material being reproduced, made available online or electronically, provided it is for your personal, non-commercial use, or use within your organisation; the material remains unaltered; and the State of Queensland is recognised as the owner.

© The State of Queensland 2007.

For further information:  
 Statewide Landcover and Trees Study  
 80 Meiers Road  
 Indooroopilly QLD 4068  
 Phone: 61 7 3896 9605  
 Email: [geoinfo@nrw.qld.gov.au](mailto:geoinfo@nrw.qld.gov.au)  
 Web site: <http://www.nrw.qld.gov.au/slats>