



Land Cover Change in the **Mackay-Whitsunday** Natural Resource Management Region **2004–2005**

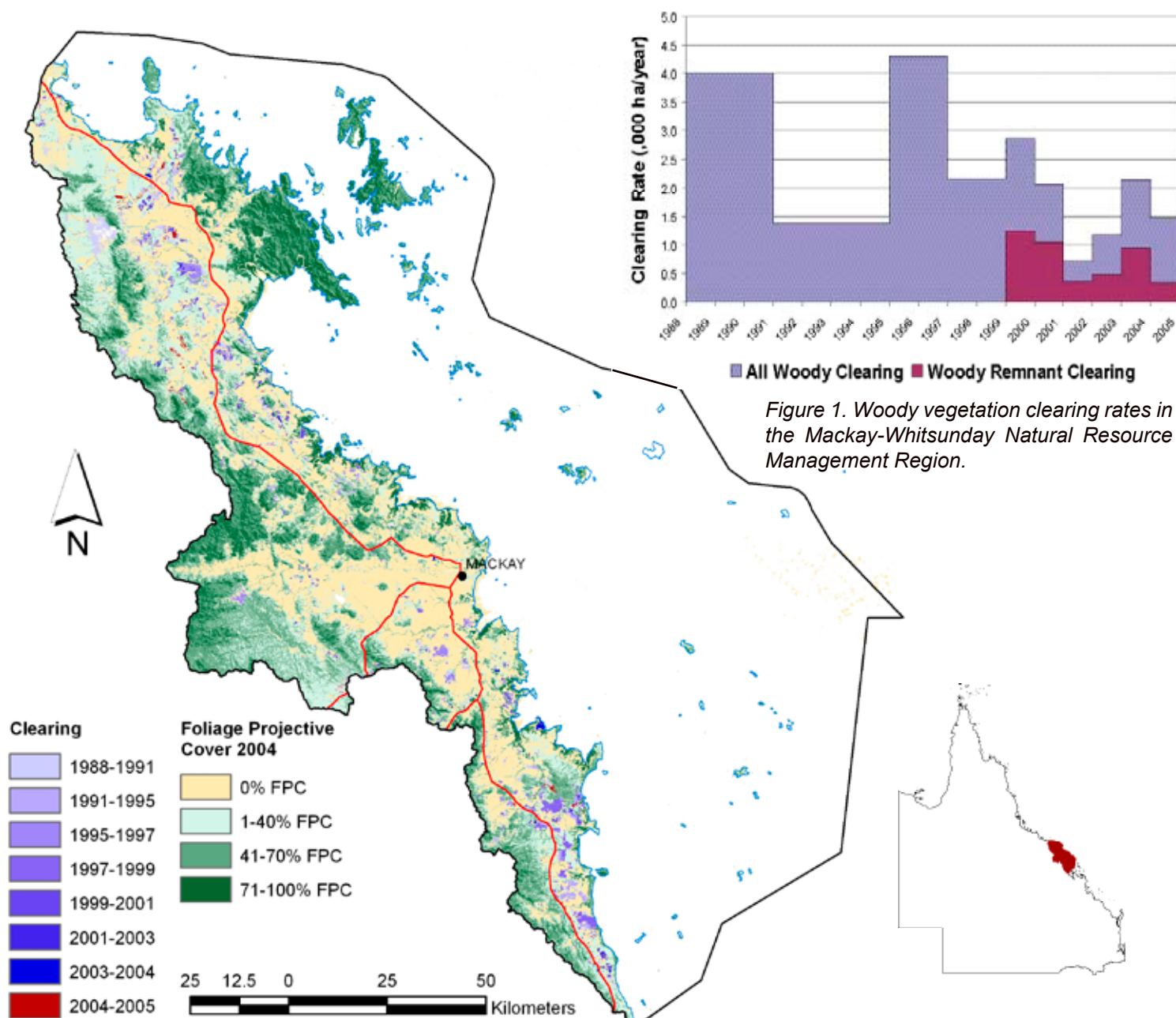


Figure 1. Woody vegetation clearing rates in the Mackay-Whitsunday Natural Resource Management Region.

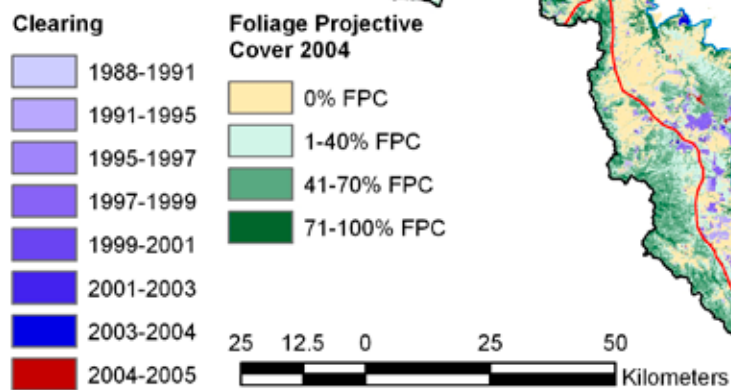


Figure 2. Clearing for each change period.

Summary

The woody vegetation clearing rate for the Mackay-Whitsunday region for 2004–2005 was 1,475 ha/year.

Woody Vegetation Clearing by Remnant Status

Table 1. Remnant and Non-remnant woody clearing rates in the Mackay-Whitsunday Natural Resource Management Region.

Period	Woody vegetation clearing rate (,000ha/yr) of		
	Non-remnant woody	Remnant woody*	Total woody
1999–2000	1.612	1.256	2.868
2000–2001	1.015	1.052	2.067
2001–2002	0.351	0.360	0.712
2002–2003	0.692	0.493	1.185
2003–2004	1.195	0.955	2.150
2004–2005	1.136	0.339	1.475

* Regional Ecosystem remnant mapping prior to 1999 not used in this analysis.

Woody Vegetation Clearing by Tenure

Table 2. Woody vegetation clearing rates in the Mackay-Whitsunday Natural Resource Management Region by tenure.

Period	Clearing rate (,000ha/yr) on				Total
	Freehold	Leasehold	Reserves	Other Tenures	
1988–1991	2.755	0.497	0.013	0.689	3.954
1991–1995	1.051	0.228	0.018	0.008	1.304
1995–1997	4.054	0.233	0.007	0.001	4.294
1997–1999	1.976	0.161	0.002	0.006	2.144
1999–2000	2.688	0.169	0.011	0.000	2.868
2000–2001	1.811	0.236	0.019	0.000	2.067
2001–2002	0.667	0.044	0.000	0.000	0.712
2002–2003	0.913	0.268	0.000	0.003	1.185
2003–2004	2.000	0.142	0.007	0.000	2.150
2004–2005	1.417	0.053	0.005	0.000	1.475

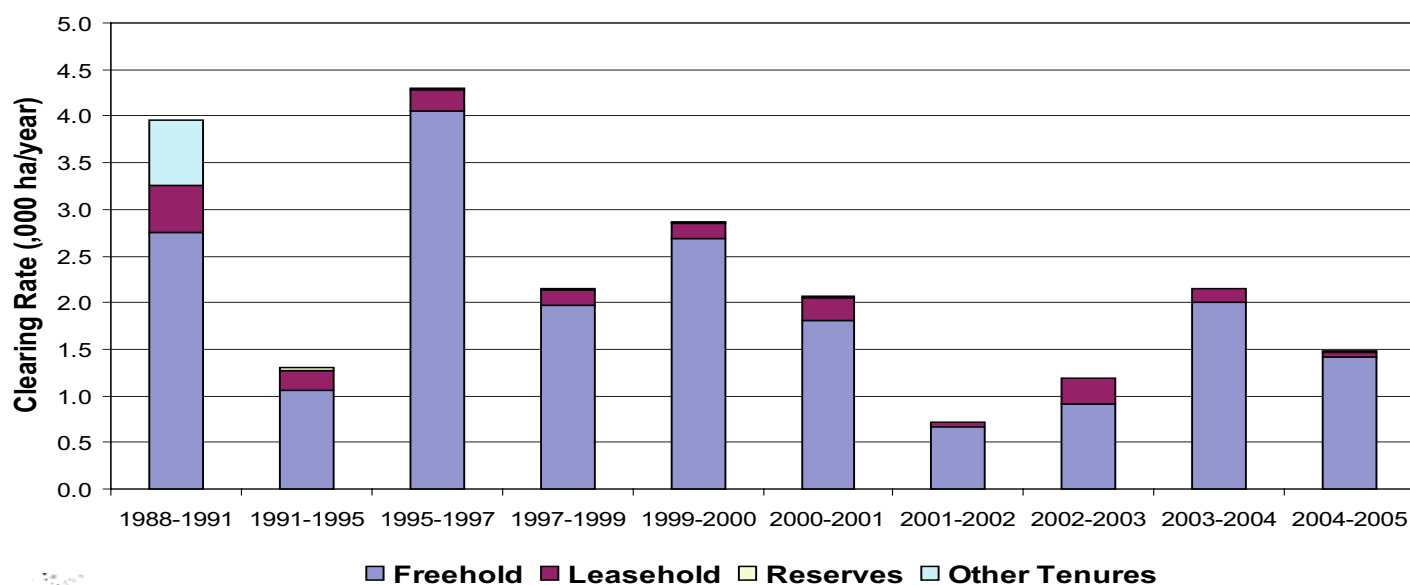


Figure 3. Woody vegetation clearing rates in the Mackay-Whitsunday Natural Resource Management Region by tenure.

Mackay-Whitsunday NRM Region, the region is freehold tenure, 19% is hold tenure and 19% reserves (based the 2001 DCDB).

Woody Vegetation Clearing by Subcatchment

Table 3. Woody vegetation clearing rates in the Mackay-Whitsunday Natural Resource Management Region by subcatchment #.

Period	Woody vegetation clearing rate (,000ha/yr) for					Total
	O'Connell River	Pioneer River	Plane Creek	Proserpine River	Whitsunday Islands	
1988–1991	0.687	0.104	0.916	2.307	0.000	4.015
1991–1995	0.275	0.018	0.784	0.296	0.000	1.373
1995–1997	0.449	0.453	2.051	1.356	0.000	4.309
1997–1999	0.412	0.095	1.364	0.291	0.000	2.161
1999–2000	1.090	0.197	1.017	0.561	0.000	2.866
2000–2001	0.445	0.019	0.327	1.274	0.000	2.065
2001–2002	0.355	0.046	0.094	0.217	0.000	0.712
2002–2003	0.352	0.064	0.359	0.409	0.000	1.185
2003–2004	0.758	0.082	0.710	0.600	0.000	2.150
2004–2005	0.538	0.028	0.319	0.590	0.000	1.475

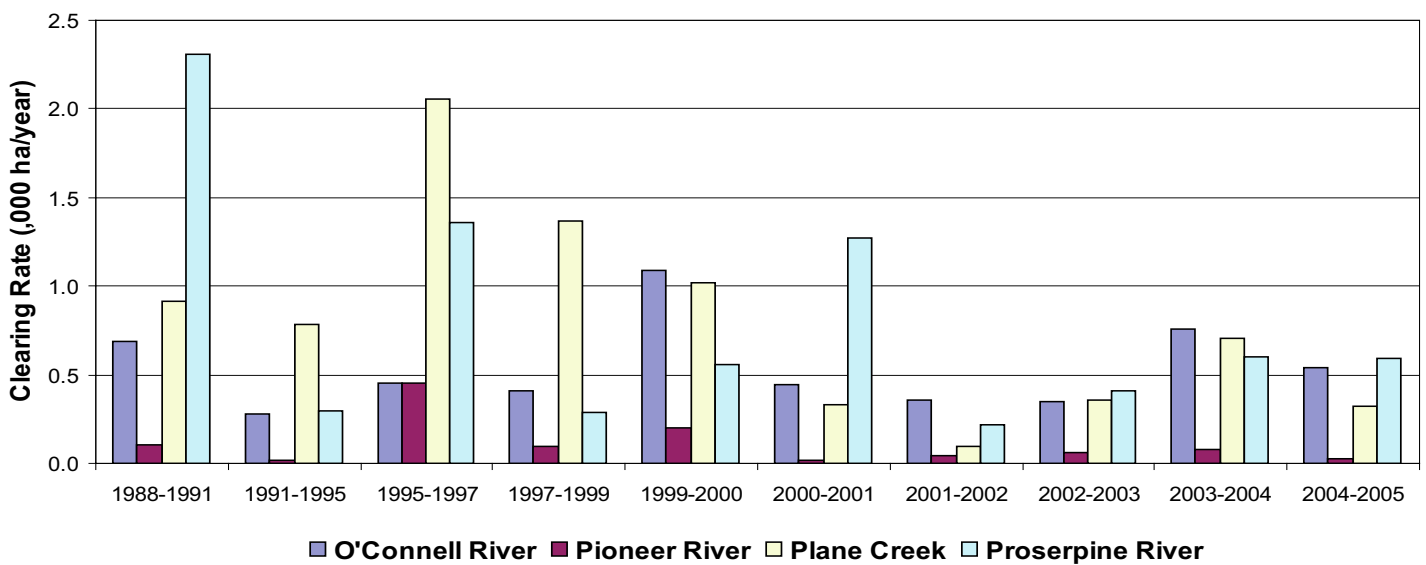


Figure 4. Woody vegetation clearing rates in the Mackay-Whitsunday Natural Resource Management Region by subcatchment #.

* Please refer to Figure 24 of the main report (NRW, 2007) for the location of each subcatchment.

Remaining Woody Vegetation

Table 4. Remaining Woody Vegetation in the Mackay-Whitsunday Natural Resource Management Region by subcatchment.

,000 ha	O'Connell River	Pioneer River	Plane Creek	Proserpine River	Whitsunday Islands	Total
Catchment area	239	157	254	253	16	919
Area woody 2004	154	111	133	168	15	581
% of catchment woody in 2004	64	71	53	66	94	63

Woody Vegetation Clearing by Replacement Landcover

Table 5. Woody vegetation clearing rates in the Mackay-Whitsunday Natural Resource Management Region by replacement landcover.

Period	Woody vegetation clearing rate (,000ha/yr) for						Total*
	Pasture	Crop	Forestry	Mining	Infrastructure	Settlement	
1988–1991	2.344	0.699	0.000	0.000	0.972	0.000	4.015
1991–1995	0.774	0.556	0.015	0.000	0.024	0.005	1.374
1995–1997	0.605	3.385	0.002	0.000	0.317	0.000	4.310
1997–1999	0.104	2.016	0.000	0.002	0.040	0.000	2.163
1999–2000	2.089	0.636	0.005	0.000	0.123	0.015	2.868
2000–2001	1.462	0.515	0.014	0.002	0.073	0.000	2.067
2001–2002	0.435	0.206	0.000	0.000	0.061	0.009	0.712
2002–2003	1.012	0.147	0.000	0.000	0.019	0.007	1.185
2003–2004	2.059	0.018	0.000	0.000	0.035	0.038	2.150
2004–2005	1.366	0.038	0.001	0.002	0.040	0.028	1.475

* total excludes natural tree death

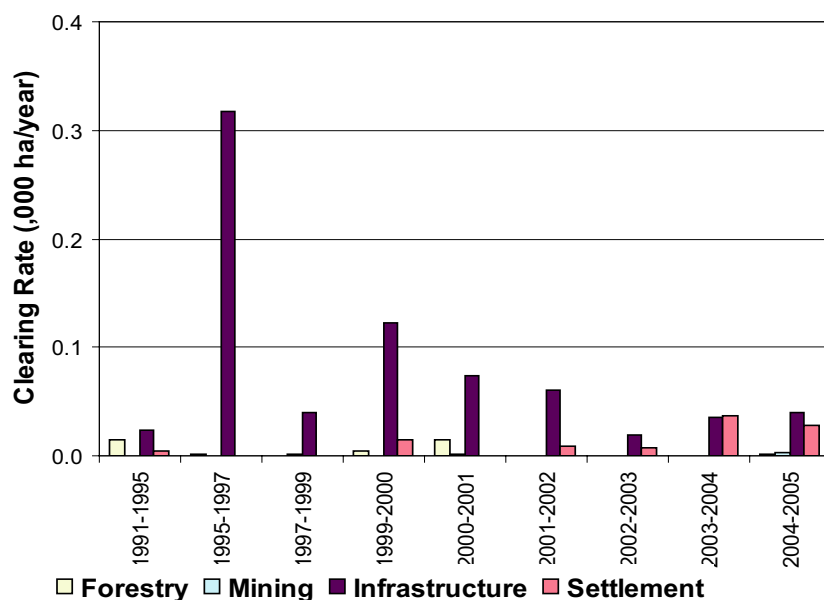
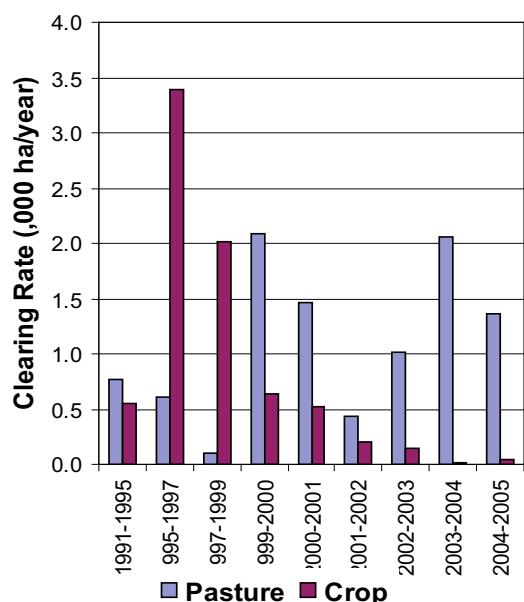
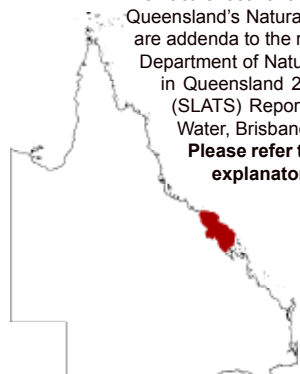


Figure 5. Woody vegetation clearing rates in the Mackay-Whitsunday Natural Resource Management Region by replacement landcover.

This fact sheet is 8 of 14 in a series detailing land cover change in Queensland's Natural Resource Management Regions. These fact sheets are addenda to the report:

Department of Natural Resources and Water (2007). Land cover change in Queensland 2004–2005: a Statewide Landcover and Trees Study (SLATS) Report, Feb, 2007. Department of Natural Resources and Water, Brisbane.

Please refer to this report for further background, methods and explanatory notes.



The QLD Government supports and encourages the dissemination and exchange of information. However, copyright protects this document. The State of Queensland has no objection to this material being reproduced, made available online or electronically, provided it is for your personal, non-commercial use, or use within your organisation; the material remains unaltered; and the State of Queensland is recognised as the owner.

© The State of Queensland 2007.

For further information:
 Statewide Landcover and Trees Study
 80 Meiers Road
 Indooroopilly QLD 4068
 Phone: 61 7 3896 9605
 Email: geoinfo@nrw.qld.gov.au
 Web site: <http://www.nrw.qld.gov.au/slats>