



# Land Cover Change in the **Fitzroy** Natural Resource Management Region **2004–2005**

## Summary

The woody vegetation clearing rate for 2004–2005 was the second lowest rate recorded for the Fitzroy region since satellite monitoring began. The 2004–2005 woody vegetation clearing rate was 49,020 ha/year.

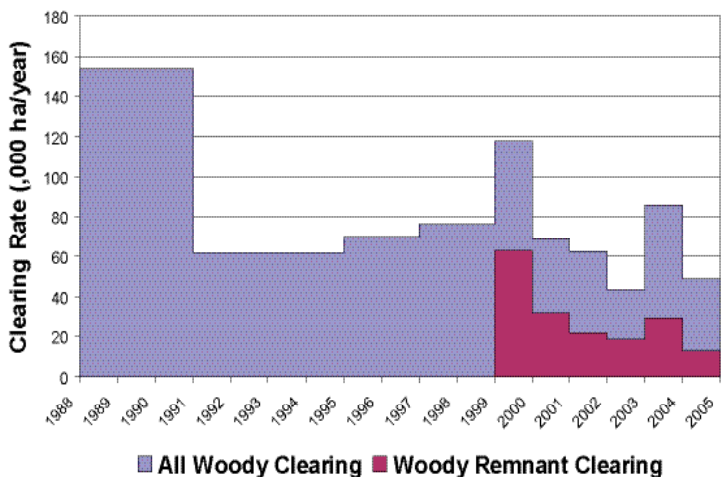
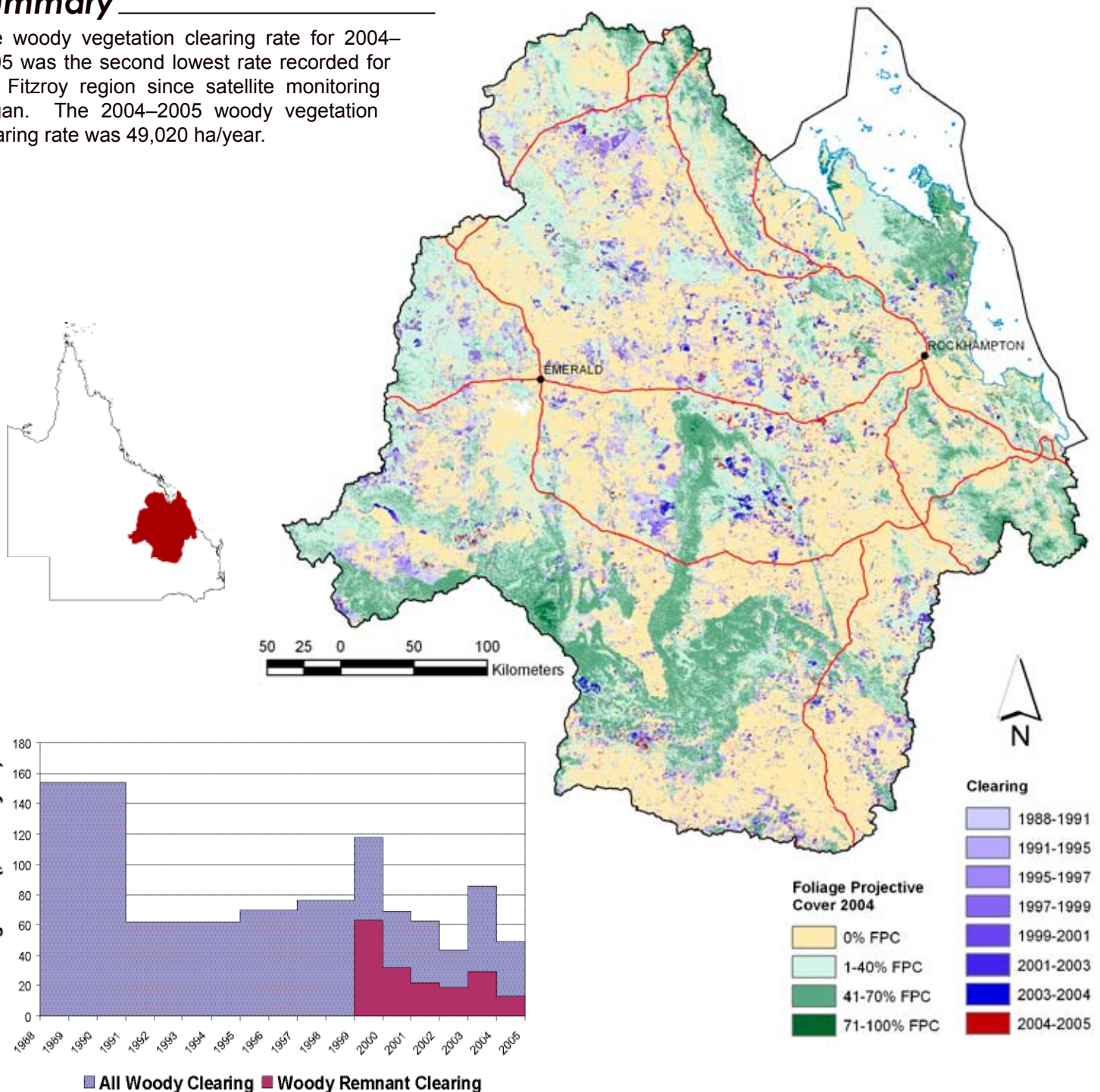


Figure 1. Woody vegetation clearing rates in the Fitzroy Natural Resource Management Region.

Figure 2. Woody vegetation clearing for each change period.

## Woody Vegetation Clearing by Remnant Status

Table 1. Remnant and Non-remnant woody clearing rates in the Fitzroy Natural Resource Management Region.

Period	Woody vegetation clearing rate (,000ha/yr) of		
	Non-remnant woody	Remnant woody*	Total woody
1999–2000	55.063	63.169	118.232
2000–2001	36.685	32.246	68.931
2001–2002	40.955	21.632	62.587
2002–2003	25.025	18.345	43.371
2003–2004	56.923	29.321	86.244
2004–2005	36.170	12.851	49.020

\* Regional Ecosystem remnant mapping prior to 1999 not used in this analysis.

## Woody Vegetation Clearing by Tenure

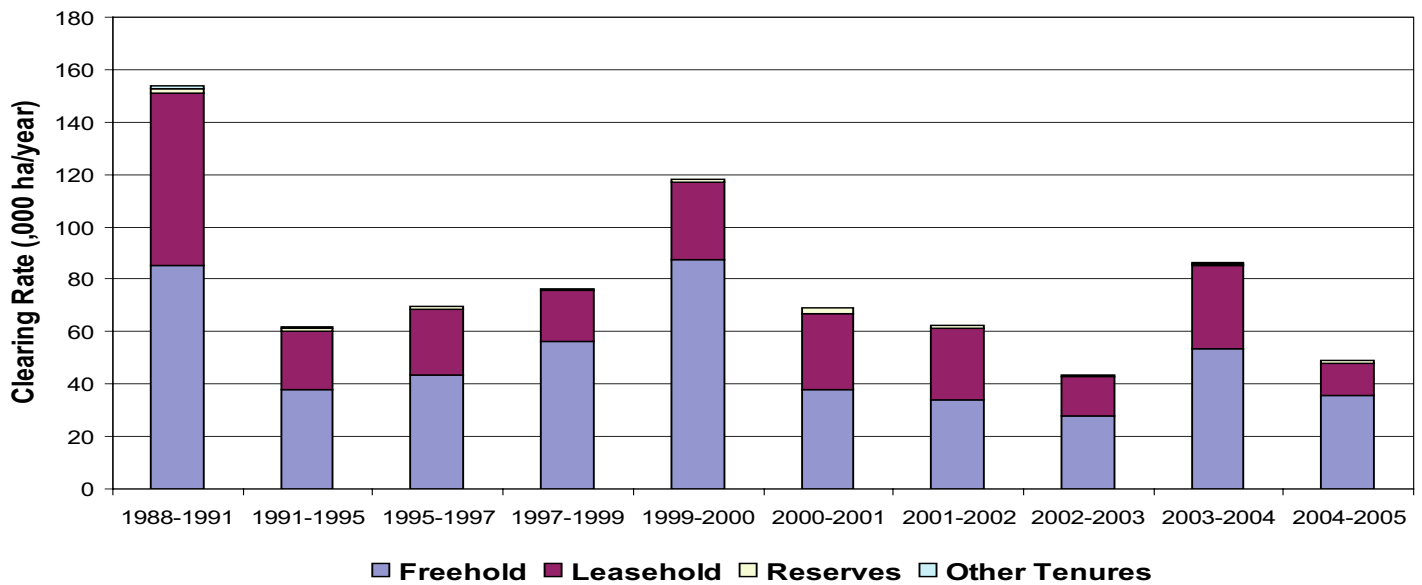


Figure 3. Woody vegetation clearing rates in the Fitzroy Natural Resource Management Region by tenure.

Period	Clearing rate (,000ha/yr) on				
	Freehold	Leasehold	Reserves	Other Tenures	Total
1988–1991	85.325	65.837	1.419	1.303	153.884
1991–1995	37.633	22.824	0.969	0.326	61.752
1995–1997	43.537	24.971	0.955	0.358	69.821
1997–1999	56.027	19.630	0.634	0.097	76.389
1999–2000	87.516	29.484	1.224	0.007	118.232
2000–2001	37.899	29.137	1.882	0.013	68.931
2001–2002	33.868	27.654	1.022	0.043	62.587
2002–2003	27.610	15.190	0.551	0.020	43.371
2003–2004	53.670	31.689	0.522	0.362	86.242
2004–2005	35.922	11.914	1.041	0.144	49.020

Table 2. Woody vegetation clearing rates in the Fitzroy Natural Resource Management Region by tenure.



Fitzroy NRM Region, 60% of the region is freehold tenure and 28% is leasehold tenure (based on 2011 DCDB).

## Woody Vegetation Clearing by Subcatchment

Table 3. Woody vegetation clearing rates in the Fitzroy Natural Resource Management Region by subcatchment #.

Period	Clearing rate (,000ha/yr) for						
	Boyne R (Gladstone)	Calliope R	Comet R	Curtis Island	Fitzroy R	Isaac R	Lower Dawson R
1988–1991	0.247	0.884	25.135	0.003	4.552	28.251	13.280
1991–1995	0.118	0.135	11.080	0.002	1.788	11.175	5.762
1995–1997	0.057	0.132	8.093	0.004	2.174	13.971	7.729
1997–1999	0.204	0.418	7.998	0.020	3.241	15.831	11.241
1999–2000	0.092	0.198	13.714	0.007	6.634	19.045	21.004
2000–2001	0.139	0.293	5.645	0.008	5.258	12.307	9.374
2001–2002	0.847	0.267	5.277	0.000	2.790	6.572	12.789
2002–2003	0.307	0.567	3.166	0.010	2.992	4.497	9.897
2003–2004	0.404	0.486	8.584	0.000	7.447	12.022	20.659
2004–2005	0.227	0.472	2.543	0.000	4.987	4.782	10.197

Table 3.continued

Period	Clearing rate (,000ha/yr) for						
	Mackenzie R	Nogoa R	Shoalwater R	Styx R	Upper Dawson R	Waterpark Ck	Total
1988–1991	20.081	45.493	0.684	0.738	14.187	0.334	153.877
1991–1995	7.721	13.583	0.125	0.390	9.625	0.242	61.747
1995–1997	11.179	17.195	0.173	0.633	8.166	0.324	69.831
1997–1999	11.523	11.768	0.170	0.633	13.005	0.371	76.422
1999–2000	15.214	22.611	0.710	1.738	16.179	1.027	118.184
2000–2001	8.118	17.843	0.472	2.236	7.065	0.158	68.926
2001–2002	3.620	18.925	0.263	1.164	9.617	0.442	62.573
2002–2003	3.749	9.809	0.386	0.766	6.804	0.403	43.356
2003–2004	11.913	13.539	0.448	0.701	9.489	0.547	86.240
2004–2005	6.689	6.562	0.516	1.285	10.172	0.582	49.019

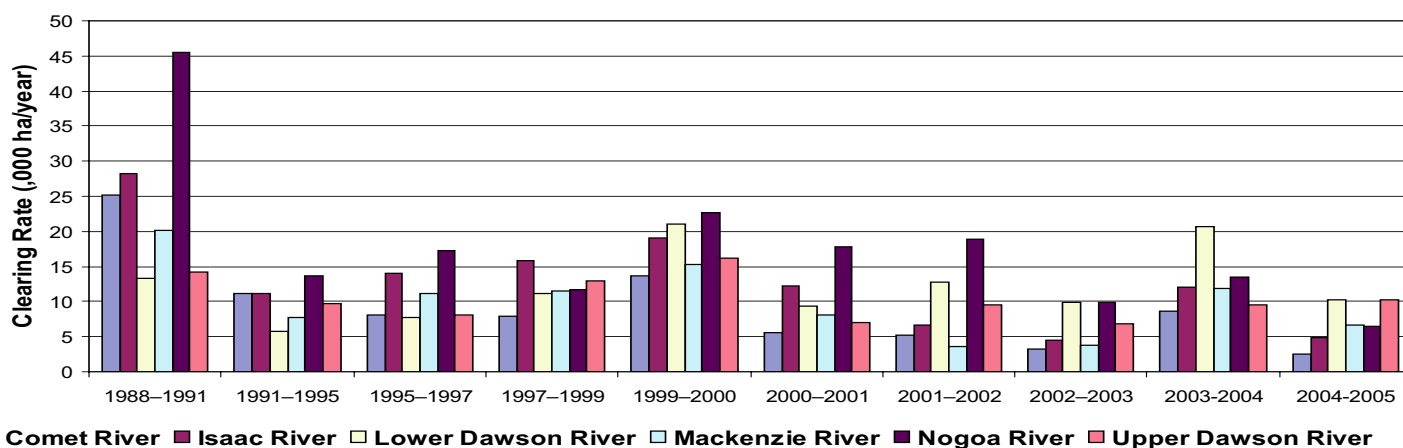


Figure 4. Woody vegetation clearing rates in the Fitzroy Natural Resource Management Region by subcatchment #.

# Please refer to Figure 24 of the main report (NRW, 2007) for the location of each subcatchment.

## Remaining Woody Vegetation

Table 4. Remaining woody vegetation in the Fitzroy Natural Resource Management Region by subcatchment.

,000 ha	Boyne R (Gladstone)	Calliope R	Comet R	Curtis Island	Fitzroy R	Isaac R	Lower Dawson R
Catchment area	250	224	1775	58	1099	2237	2789
Area woody 2004	192	118	882	47	551	1154	1217
% of catchment woody in 2004	77	53	50	81	50	52	44

Table 4. continued

,000 ha	Mackenzie R	Nogoa R	Shoalwater R	Styx R	Upper Dawson R	Waterpark Ck	Total
Catchment area	1307	2715	360	301	2330	184	15631
Area woody 2004	458	1460	230	144	1069	150	7672
% of catchment woody in 2004	35	54	64	48	46	82	49

## Woody Vegetation Clearing by Replacement Landcover

Table 5. Woody vegetation clearing rates in the Fitzroy Natural Resource Management Region by replacement landcover.

Period	Clearing rate (,000ha/yr) for						Total*
	Pasture	Crop	Forestry	Mining	Infrastructure	Settlement	
1988–1991	146.617	3.733	0.146	1.199	2.075	0.157	153.928
1991–1995	57.946	1.617	0.691	0.836	0.607	0.074	61.772
1995–1997	59.667	7.388	0.624	1.222	0.868	0.092	69.861
1997–1999	67.683	5.772	0.556	1.338	1.030	0.055	76.433
1999–2000	112.450	2.274	1.026	0.777	1.683	0.022	118.232
2000–2001	63.914	0.073	1.422	1.619	1.823	0.081	68.931
2001–2002	59.275	0.032	0.428	1.340	1.444	0.068	62.587
2002–2003	41.100	0.017	0.292	1.240	0.594	0.128	43.371
2003–2004	82.097	0.112	0.000	2.144	1.822	0.068	86.244
2004–2005	45.522	0.429	1.038	1.347	0.591	0.094	49.020

\* total excludes natural tree death

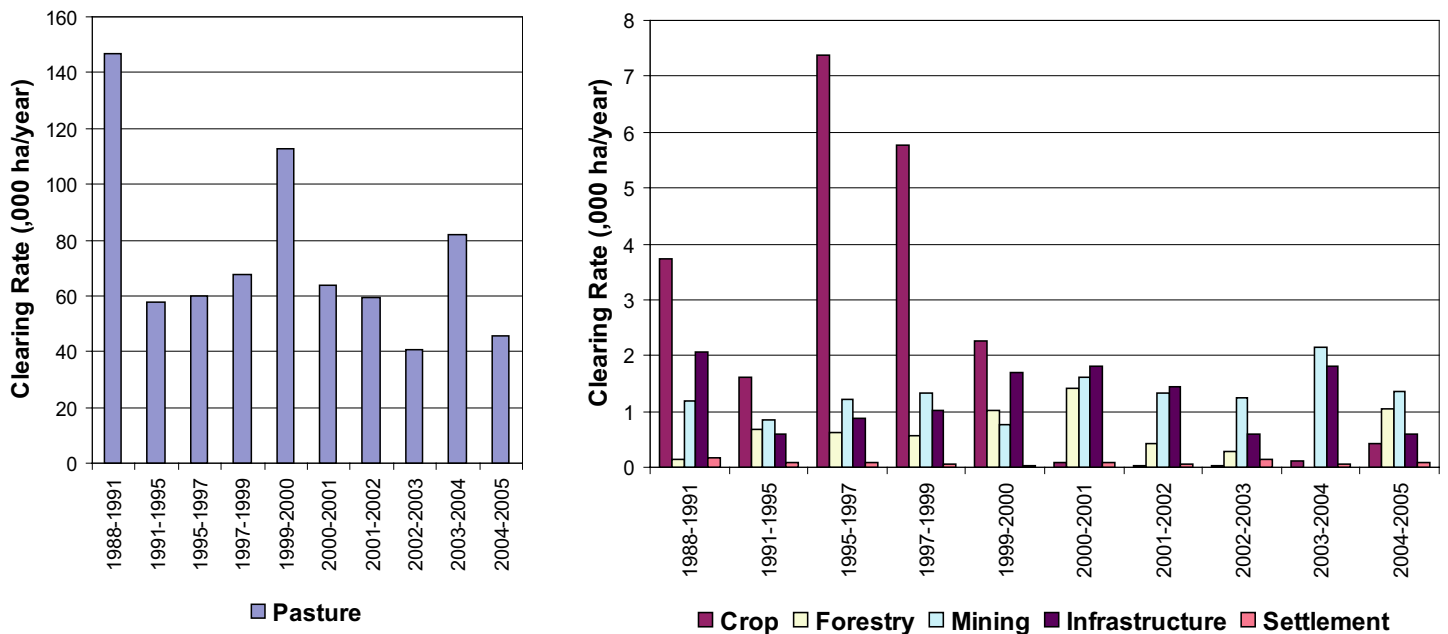


Figure 5. Woody vegetation clearing rates in the Fitzroy Natural Resource Management Region by replacement landcover.

This fact sheet is 7 of 14 in a series detailing land cover change in Queensland's Natural Resource Management Regions. These fact sheets are addenda to the report:  
 Department of Natural Resources and Water (2007). Land cover change in Queensland 2004–2005: a Statewide Landcover and Trees Study (SLATS) Report, Feb, 2007. Department of Natural Resources and Water, Brisbane.  
**Please refer to this report for further background, methods and explanatory notes.**

The QLD Government supports and encourages the dissemination and exchange of information. However, copyright protects this document. The State of Queensland has no objection to this material being reproduced, made available online or electronically, provided it is for your personal, non-commercial use, or use within your organisation; the material remains unaltered; and the State of Queensland is recognised as the owner.

© The State of Queensland 2007.

For further information:  
 Statewide Landcover and Trees Study  
 80 Meiers Road  
 Indooroopilly QLD 4068  
 Phone: 61 7 3896 9605  
 Email: [geoinfo@nrw.qld.gov.au](mailto:geoinfo@nrw.qld.gov.au)  
 Web site: <http://www.nrw.qld.gov.au/slats>