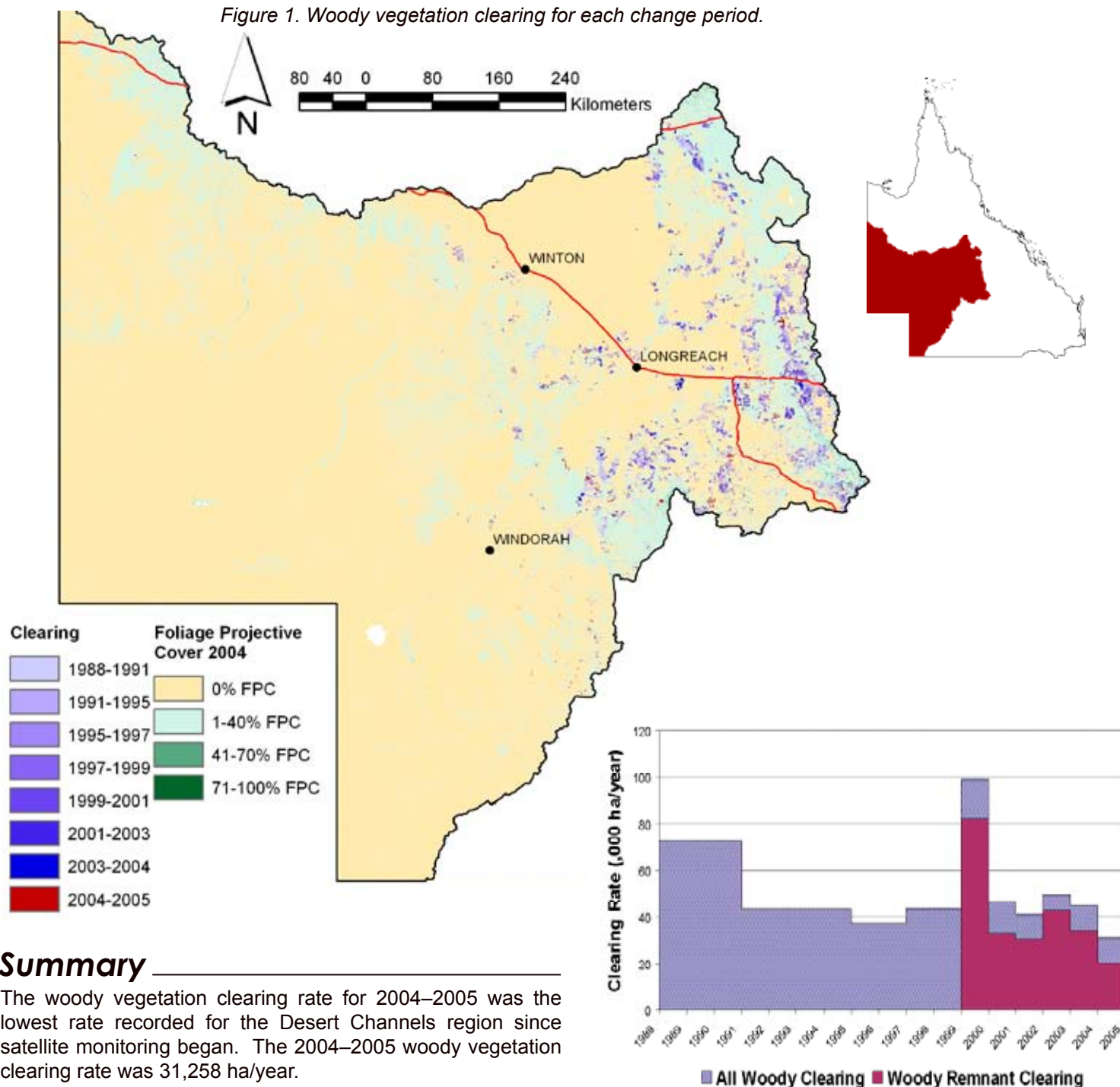




Land Cover Change in the **Desert Channels** Natural Resource Management Region **2004–2005**

Figure 1. Woody vegetation clearing for each change period.



Summary

The woody vegetation clearing rate for 2004–2005 was the lowest rate recorded for the Desert Channels region since satellite monitoring began. The 2004–2005 woody vegetation clearing rate was 31,258 ha/year.

Figure 2. Woody vegetation clearing rates in the Desert Channels Natural Resource Management Region.

Woody Vegetation Clearing by Remnant Status

Table 1. Remnant and Non-remnant woody clearing rates in the Desert Channels Natural Resource Management Region.

Period	Woody vegetation clearing rate (,000ha/yr) of		
	Non-remnant woody	Remnant woody*	Total woody
1999–2000	16.623	82.450	99.073
2000–2001	13.717	32.868	46.585
2001–2002	10.552	30.758	41.310
2002–2003	6.507	43.161	49.668
2003–2004	11.137	33.903	45.040
2004–2005	10.469	20.790	31.258

* Regional Ecosystem remnant mapping prior to 1999 not used in this analysis.

Woody Vegetation Clearing by Tenure

Table 2. Woody vegetation clearing rates in the Desert Channels Natural Resource Management Region by tenure.

Period	Woody vegetation clearing rate (,000ha/yr) on				
	Freehold	Leasehold	Reserves	Other Tenures	Total
1988–1991	24.281	48.312	0.046	0.018	72.658
1991–1995	15.143	28.249	0.014	0.002	43.407
1995–1997	15.999	21.170	0.068	0.004	37.240
1997–1999	19.752	23.765	0.002	0.112	43.631
1999–2000	69.674	29.372	0.004	0.023	99.073
2000–2001	14.824	31.750	0.008	0.003	46.585
2001–2002	20.923	20.351	0.036	0.000	41.310
2002–2003	17.221	32.447	0.000	0.000	49.668
2003–2004	20.096	24.920	0.015	0.000	45.030
2004–2005	6.906	24.332	0.020	0.000	31.258

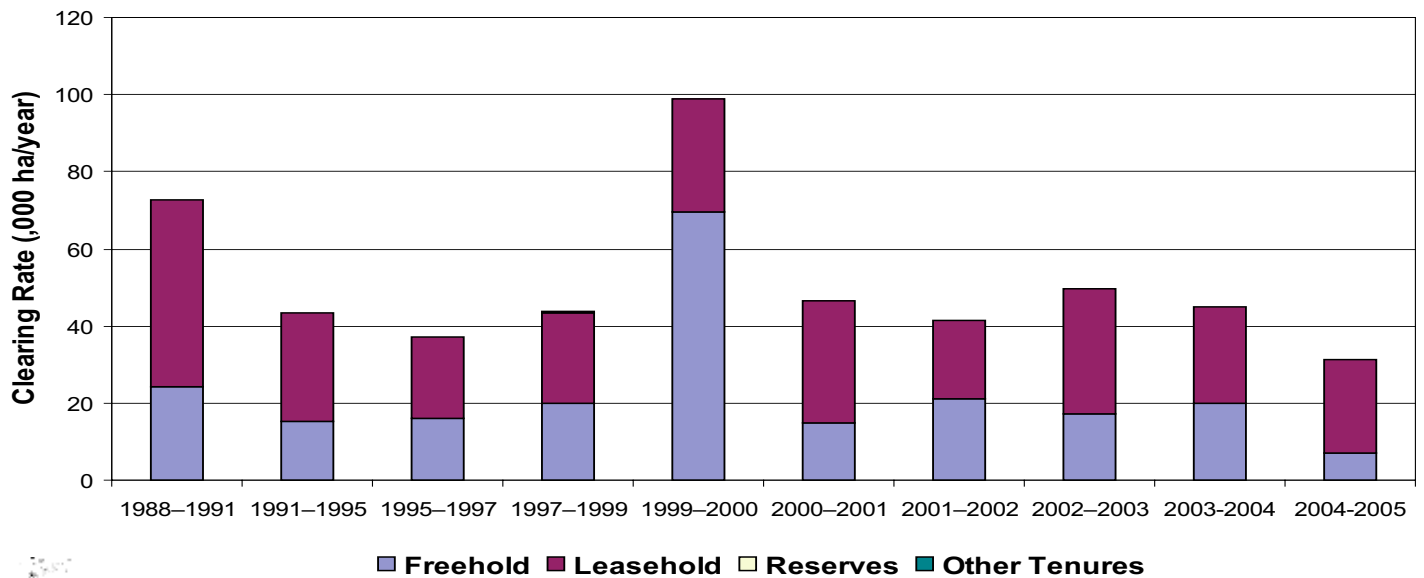


Figure 3. Woody vegetation clearing rates in the Desert Channels Natural Resource Management Region by tenure.

Desert Channels NRM Region, 11% of the region is freehold tenure and 83% is leasehold tenure (based on the 2001 CDB).

Woody Vegetation Clearing by Subcatchment

Table 3. Woody vegetation clearing rates in the Desert Channels Natural Resource Management Region by subcatchment #.

Period	Woody vegetation clearing rate (,000ha/yr) for							
	Barcoo River	Coopers Creek	Diamantina River	Eyre Creek	Georgina River	Hay	Thomson River	Total
1988–1991	52.757	0.140	1.020	0.023	0.089	0.000	18.586	72.616
1991–1995	27.570	0.024	1.002	0.025	0.020	0.000	14.765	43.407
1995–1997	20.086	0.130	0.825	0.075	0.372	0.000	15.736	37.224
1997–1999	23.113	0.013	0.896	0.010	0.039	0.000	19.553	43.625
1999–2000	52.815	0.196	1.185	0.011	0.041	0.000	44.798	99.047
2000–2001	31.018	0.004	0.028				15.515	46.564
2001–2002	32.636	0.328	0.088	0.089	0.307	0.000	7.851	41.300
2002–2003	22.083	3.847	0.995	0.121	0.037	0.000	22.567	49.649
2003–2004	28.631	0.533	1.062	0.026	0.136	0.000	14.652	45.041
2004–2005	20.510	0.775	0.369	0.017	0.145	0.000	9.444	31.258

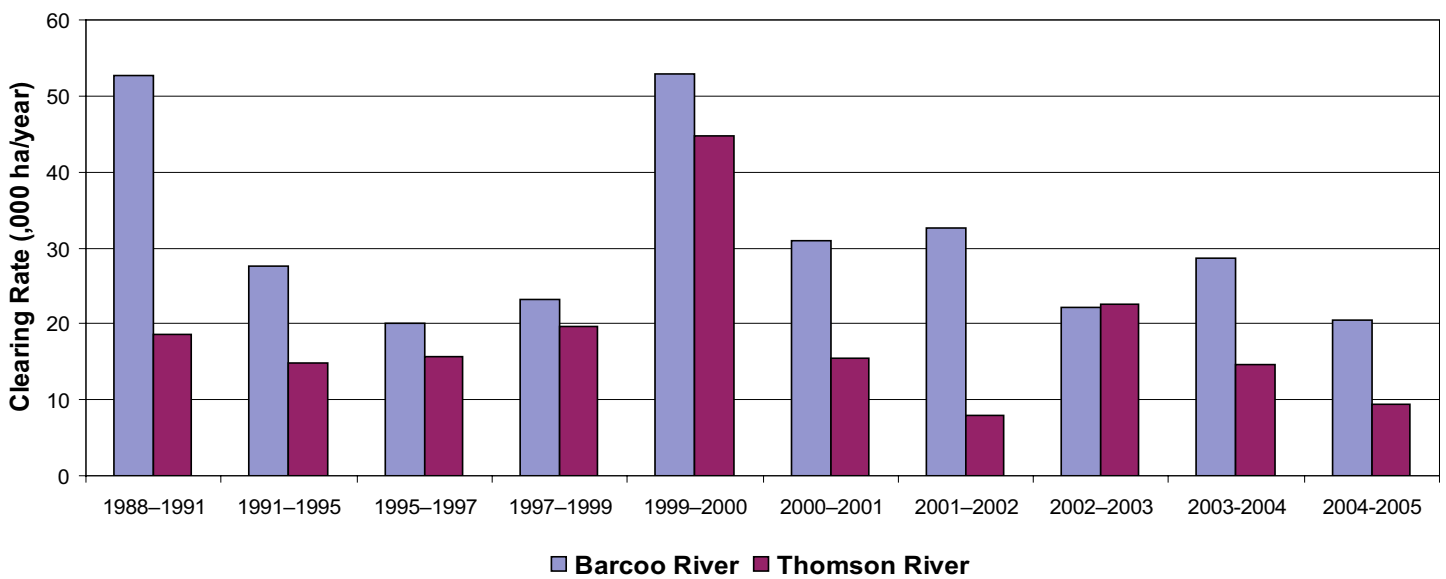


Figure 4. Woody vegetation clearing rates in the Desert Channels Natural Resource Management Region by subcatchment #.
Please refer to Figure 24 of the main report (NRW, 2007) for the location of each subcatchment.

Remaining Woody Vegetation

Table 4. Remaining Woody Vegetation in the Desert Channels Natural Resource Management Region by subcatchment.

,000 ha	Barcoo River	Coopers Creek	Diamantina River	Eyre Creek	Georgina River	Hay	Thomson River	Total
Catchment area	5323	9580	11917	7182	7222	280	9507	51026
Area woody 2004	2214	990	1468	434	1849	126	2920	9889
% of catchment woody in 2004	42	10	12	6	26	45	31	19

Note: Catchments with a low proportion of woody vegetation cover may contain significant areas of natural grasslands.

Woody Vegetation Clearing by Replacement Landcover

Table 5. Woody vegetation clearing rates in the Desert Channels Natural Resource Management Region by replacement landcover.

Period	Woody vegetation clearing rate (,000ha/yr) for						Total*
	Pasture	Crop	Forestry	Mining	Infrastructure	Settlement	
1988–1991	71.644	0.000	0.000	0.004	1.011	0.000	72.658
1991–1995	43.085	0.000	0.000	0.032	0.304	0.000	43.421
1995–1997	36.578	0.000	0.000	0.006	0.650	0.007	37.241
1997–1999	42.854	0.000	0.000	0.013	0.770	0.000	43.637
1999–2000	98.048	0.000	0.000	0.002	1.023	0.000	99.073
2000–2001	45.694	0.000	0.000	0.000	0.889	0.002	46.585
2001–2002	41.259	0.000	0.000	0.000	0.051	0.000	41.310
2002–2003	49.607	0.000	0.000	0.000	0.062	0.000	49.668
2003–2004	44.571	0.000	0.000	0.040	0.429	0.000	45.040
2004–2005	30.907	0.000	0.000	0.000	0.350	0.001	31.258

* total excludes natural tree death

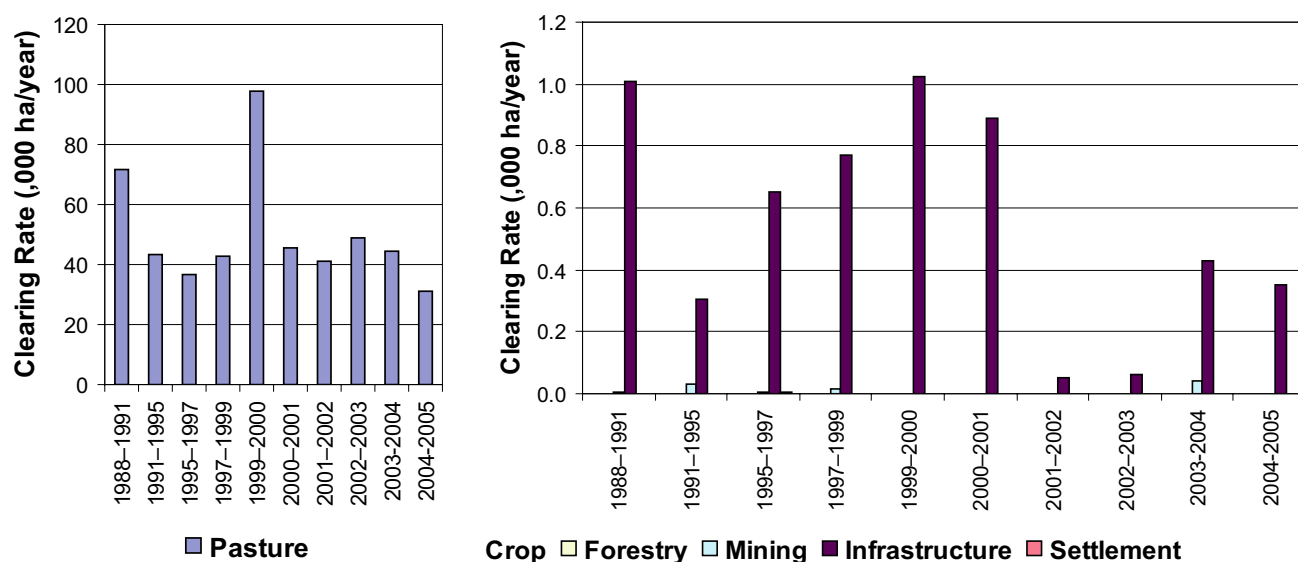
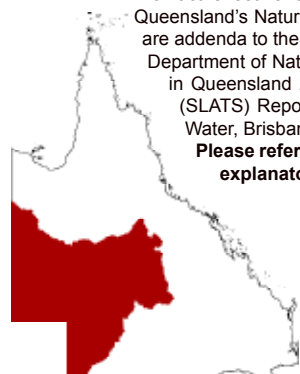


Figure 5. Woody vegetation clearing rates in the Desert Channels Natural Resource Management Region by replacement landcover.

This fact sheet is 6 of 14 in a series detailing land cover change in Queensland's Natural Resource Management Regions. These fact sheets are addenda to the report:

Department of Natural Resources and Water (2007). Land cover change in Queensland 2004–2005: a Statewide Landcover and Trees Study (SLATS) Report, Feb, 2007. Department of Natural Resources and Water, Brisbane.

Please refer to this report for further background, methods and explanatory notes.



The QLD Government supports and encourages the dissemination and exchange of information. However, copyright protects this document. The State of Queensland has no objection to this material being reproduced, made available online or electronically, provided it is for your personal, non-commercial use, or use within your organisation; the material remains unaltered; and the State of Queensland is recognised as the owner.

© The State of Queensland 2007.

For further information:
 Statewide Landcover and Trees Study
 80 Meiers Road
 Indooroopilly QLD 4068
 Phone: 61 7 3896 9605
 Email: geoinfo@nrw.qld.gov.au
 Web site: <http://www.nrw.qld.gov.au/slats>