



Land Cover Change in the **Condamine** Natural Resource Management Region **2004–2005**

Summary

The woody vegetation clearing rate for 2004–2005 was the second highest rate recorded for the Condamine region since satellite monitoring began. The 2004–2005 woody vegetation clearing rate was 8,068 ha/year.

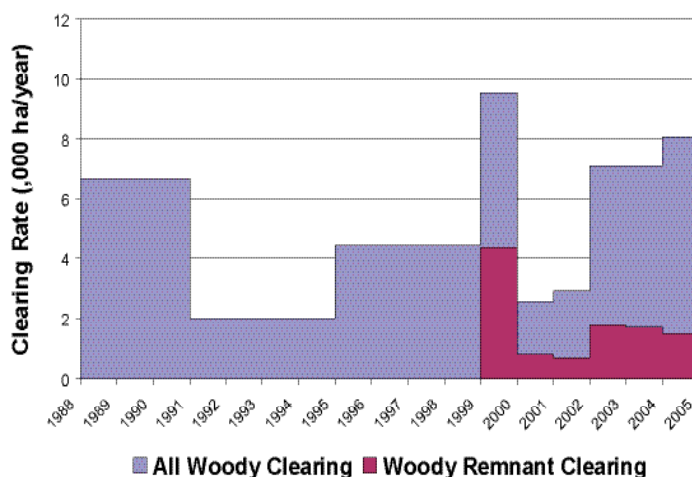


Figure 1. Woody vegetation clearing rates in the Condamine Natural Resource Management Region.

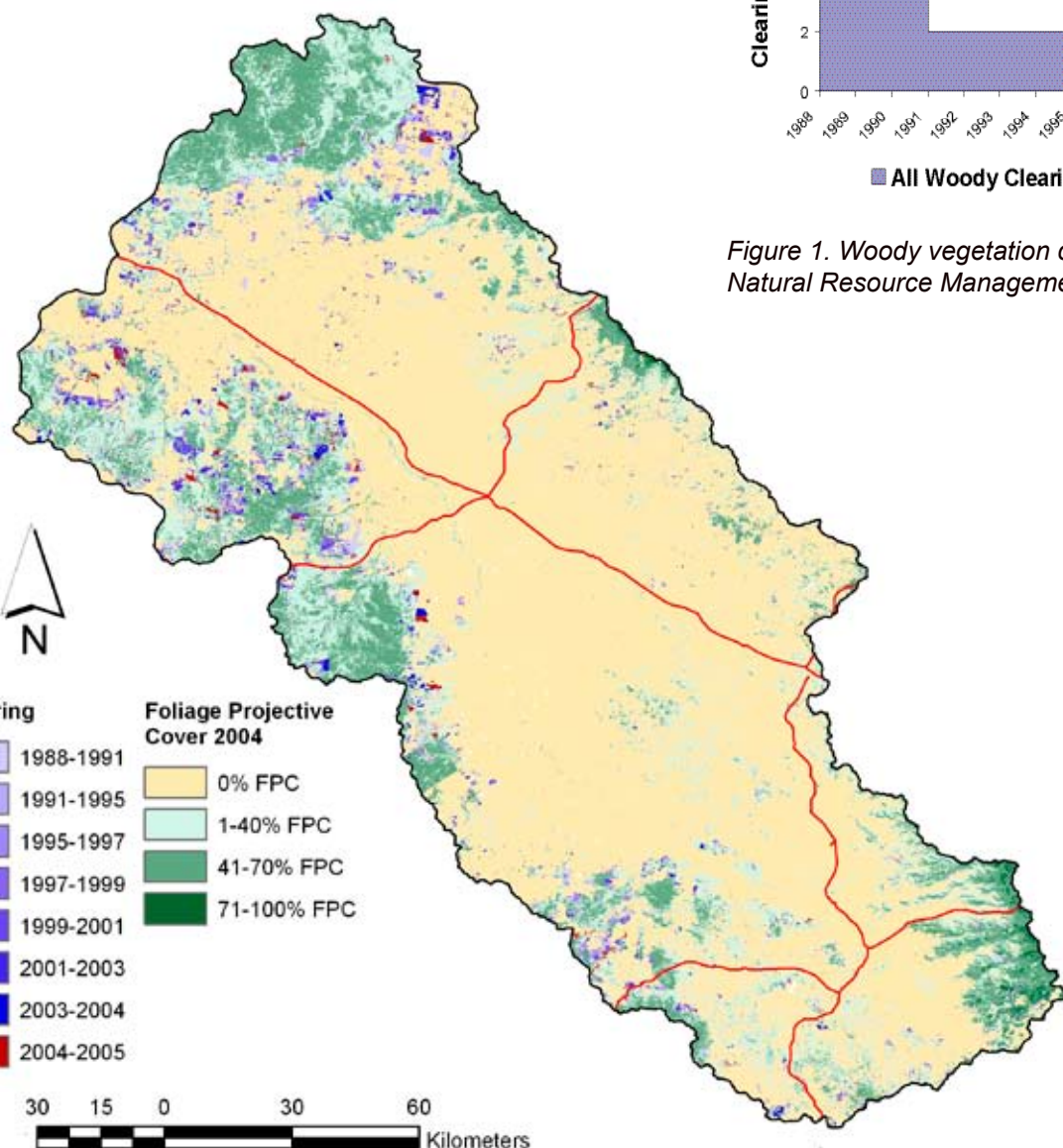


Figure 2. Woody vegetation clearing for each change period.

Woody Vegetation Clearing by Remnant Status

Table 1. Remnant and Non-remnant woody clearing rates in the Condamine Natural Resource Management Region.

Period	Woody vegetation clearing rate (,000ha/yr) of		
	Non-remnant woody	Remnant woody	Total woody
1999–2000	5.191	4.356	9.547
2000–2001	1.765	0.810	2.576
2001–2002	2.241	0.702	2.943
2002–2003	5.329	1.758	7.087
2003–2004	5.391	1.701	7.092
2004–2005	6.553	1.515	8.068

* Regional Ecosystem remnant mapping prior to 1999 not used in this analysis.

Woody Vegetation Clearing by Tenure

Table 2. Woody vegetation clearing rates in the Condamine Natural Resource Management Region by tenure.

Period	Woody vegetation clearing rate (,000ha/yr) on				
	Freehold	Leasehold	Reserves	Other Tenures	Total
1988–1991	6.119	0.464	0.086	0.006	6.675
1991–1995	1.872	0.117	0.014	0.000	2.003
1995–1997	4.214	0.183	0.028	0.003	4.428
1997–1999	4.068	0.233	0.129	0.010	4.441
1999–2000	9.338	0.129	0.080	0.000	9.547
2000–2001	2.494	0.024	0.057	0.000	2.576
2001–2002	2.716	0.128	0.094	0.000	2.938
2002–2003	6.866	0.158	0.062	0.000	7.086
2003–2004	6.875	0.149	0.068	0.000	7.092
2004–2005	7.717	0.187	0.164	0.000	8.068

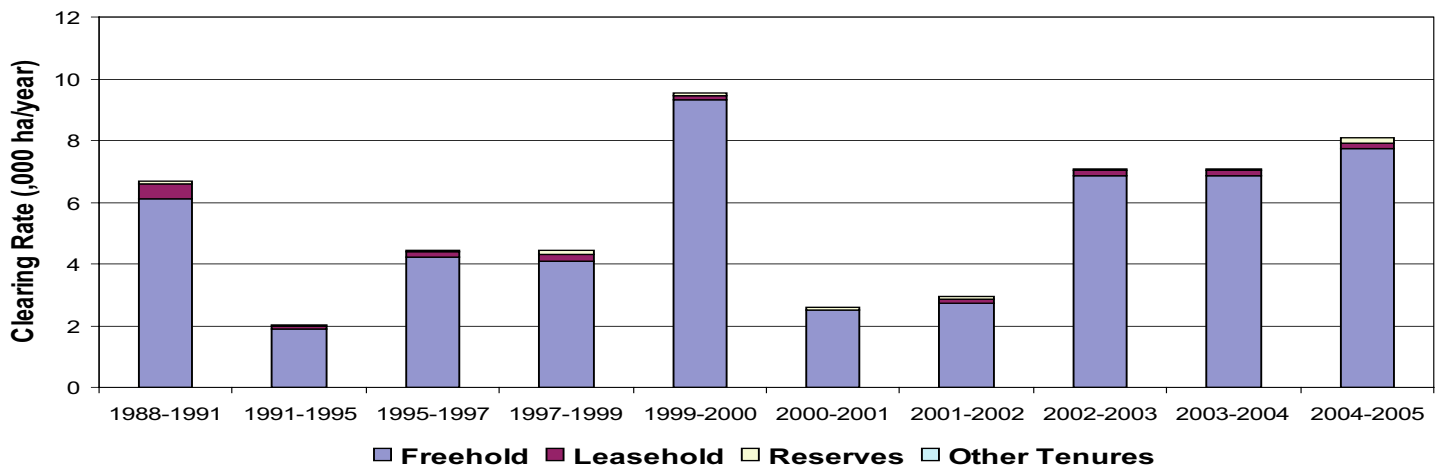
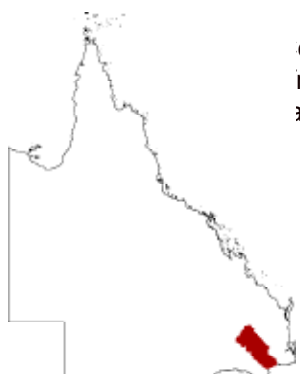


Figure 3. Woody vegetation clearing rates in the Condamine Natural Resource Management Region by tenure.



Condamine NRM Region, 85% of the Freehold tenure and 4% is leasehold (based on the 2001 DCDB).

Woody Vegetation Clearing by Subcatchment

Table 3. Woody vegetation clearing rates in the Condamine Natural Resource Management Region by subcatchment.

Period	Woody vegetation clearing rate (000ha/yr) for
	Condamine River
1988–1991	6.671
1991–1995	2.000
1995–1997	4.424
1997–1999	4.432
1999–2000	9.545
2000–2001	2.574
2001–2002	2.942
2002–2003	7.082
2003–2004	7.091
2004–2005	8.067

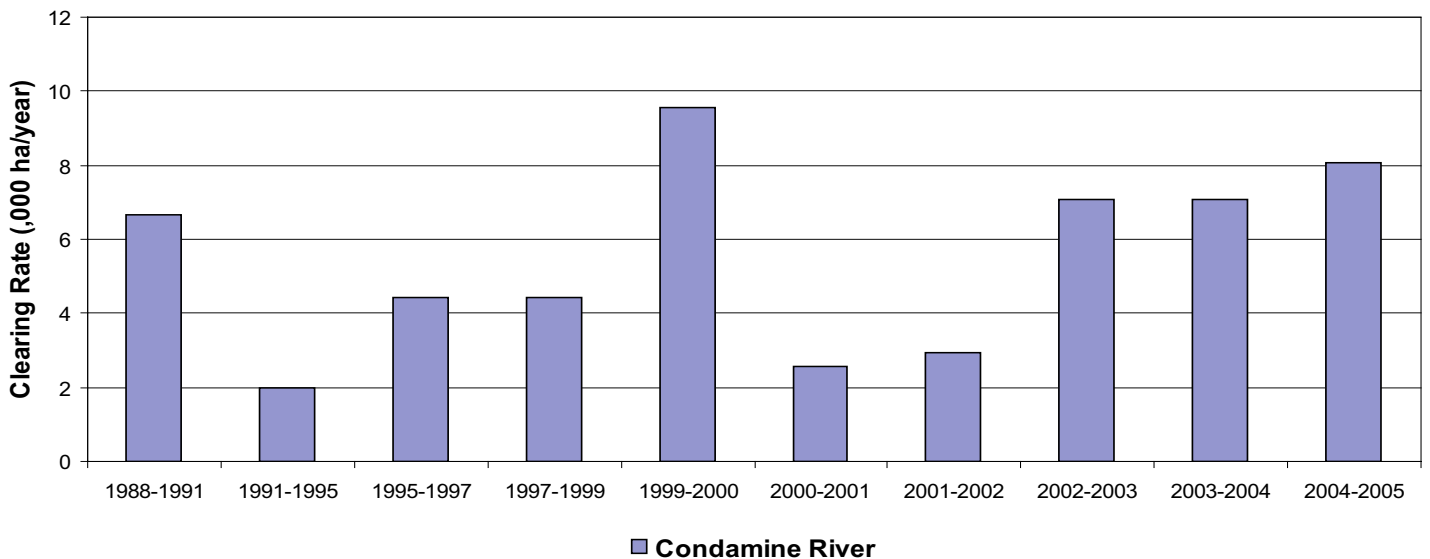


Figure 4. Woody vegetation clearing rates in the Condamine Natural Resource Management Region (Condamine River subcatchment).

Remaining Woody Vegetation

Table 4. Remaining Woody Vegetation in the Condamine Natural Resource Management Region by subcatchment.

,000 ha	Condamine River
Catchment area	2444
Area woody 2004	813
% of catchment woody in 2004	33

Woody Vegetation Clearing by Replacement Landcover

Table 5. Woody vegetation clearing rates in the Condamine Natural Resource Management Region by replacement landcover.

Period	Woody vegetation clearing rate (,000ha/yr) for						Total*
	Pasture	Crop	Forestry	Mining	Infrastructure	Settlement	
1988–1991	4.871	1.588	0.000	0.002	0.213	0.001	6.676
1991–1995	1.888	0.029	0.022	0.001	0.057	0.006	2.004
1995–1997	3.282	1.016	0.021	0.026	0.081	0.005	4.429
1997–1999	3.650	0.485	0.053	0.000	0.252	0.001	4.441
1999–2000	7.304	2.044	0.083	0.000	0.111	0.006	9.547
2000–2001	1.535	0.828	0.034	0.024	0.154	0.001	2.576
2001–2002	2.824	0.013	0.005	0.009	0.090	0.003	2.943
2002–2003	7.033	0.000	0.000	0.000	0.032	0.022	7.087
2003–2004	6.549	0.048	0.066	0.003	0.369	0.056	7.092
2004–2005	7.184	0.007	0.253	0.242	0.375	0.008	8.068

* total excludes natural tree death

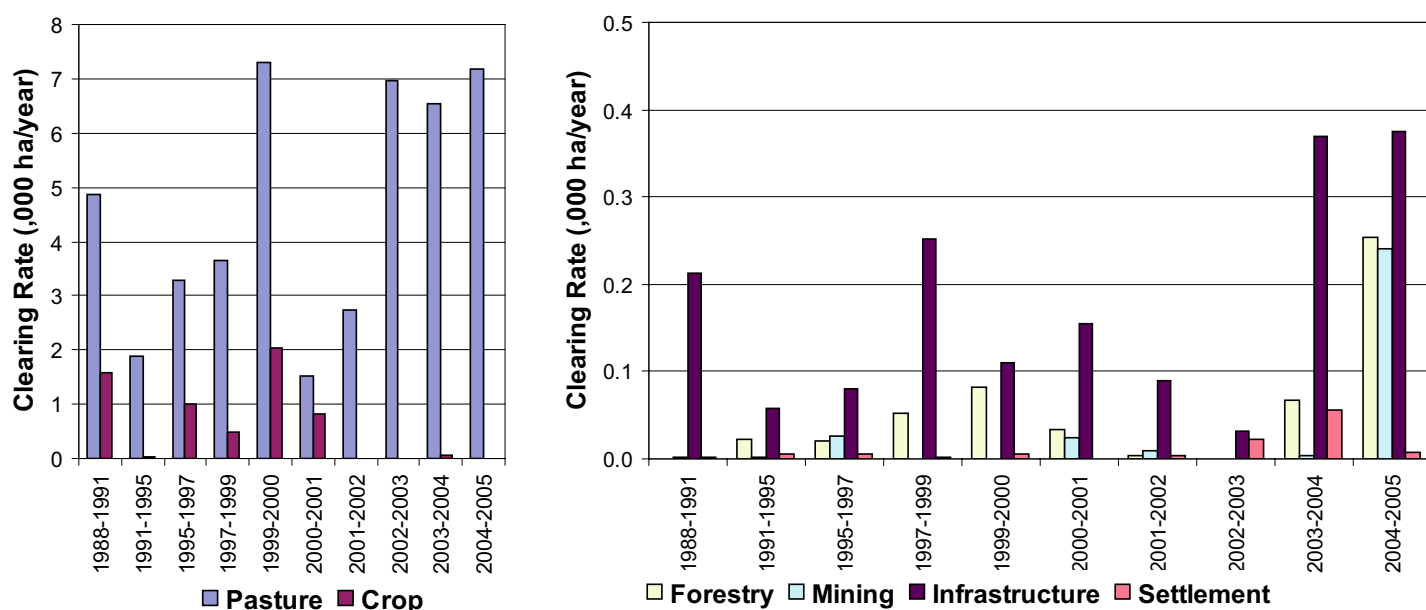


Figure 5. Woody vegetation clearing rates in the Condamine Natural Resource Management Region by replacement landcover.

This fact sheet is 5 of 14 in a series detailing land cover change in Queensland's Natural Resource Management Regions. These fact sheets are addenda to the report:
 Department of Natural Resources and Water (2007). Land cover change in Queensland 2004–2005: a Statewide Landcover and Trees Study (SLATS) Report, Feb, 2007. Department of Natural Resources and Water, Brisbane.
Please refer to this report for further background, methods and explanatory notes.

The QLD Government supports and encourages the dissemination and exchange of information. However, copyright protects this document. The State of Queensland has no objection to this material being reproduced, made available online or electronically, provided it is for your personal, non-commercial use, or use within your organisation; the material remains unaltered; and the State of Queensland is recognised as the owner.

© The State of Queensland 2007.

For further information:
 Statewide Landcover and Trees Study
 80 Meiers Road
 Indooroopilly QLD 4068
 Phone: 61 7 3896 9605
 Email: geoinfo@nrw.qld.gov.au
 Web site: <http://www.nrw.qld.gov.au/slats>