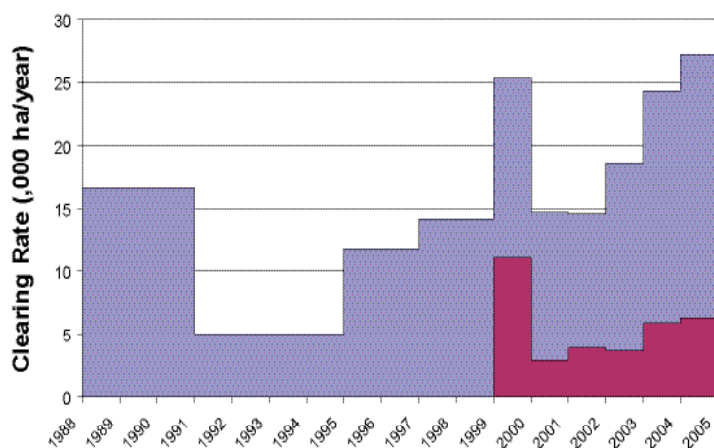




Land Cover Change in the **Burnett-Mary** Natural Resource Management Region **2004–2005**

Summary

2004–2005 saw the highest recorded woody vegetation clearing rate in the Burnett-Mary region since satellite monitoring began. The woody vegetation clearing rate for 2004–2005 was 27,231 ha/year.



■ All Woody Clearing ■ Woody Remnant Clearing

Figure 1. Woody vegetation clearing rates in the Burnett-Mary Natural Resource Management Region.

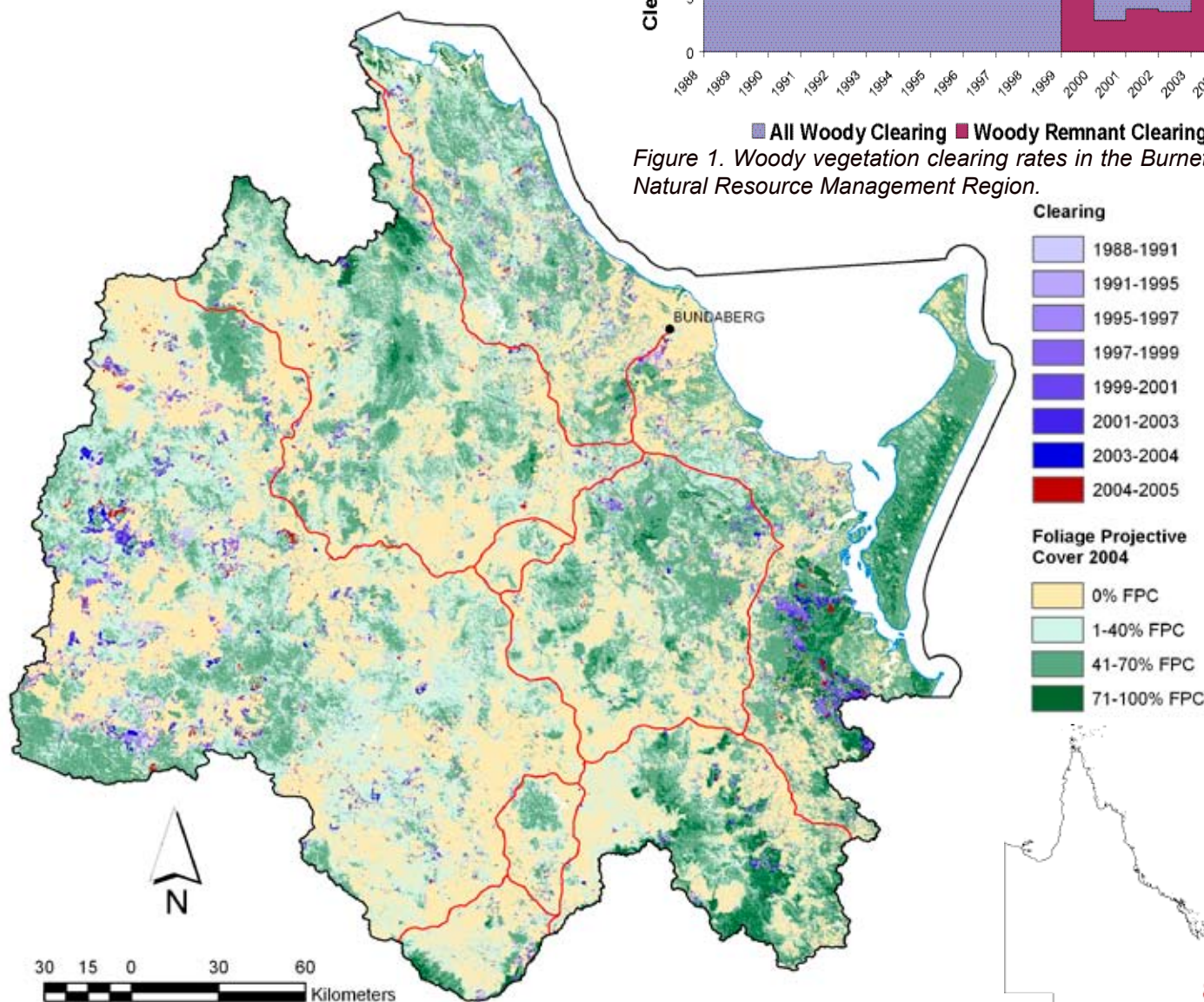


Figure 2. Woody vegetation clearing for each change period.

Woody Vegetation Clearing by Remnant Status

Table 1. Remnant and Non-remnant woody clearing rates in the Burnett-Mary Natural Resource Management Region.

Period	Woody vegetation clearing rate (,000ha/yr) of		
	Non-remnant woody	Remnant woody*	Total woody
1999–2000	14.279	11.080	25.359
2000–2001	11.836	2.945	14.781
2001–2002	10.672	3.897	14.568
2002–2003	15.045	3.630	18.675
2003–2004	18.480	5.887	24.367
2004–2005	20.886	6.346	27.231

* Regional Ecosystem remnant mapping prior to 1999 not used in this analysis.

Woody Vegetation Clearing by Tenure

Table 2. Woody vegetation clearing rates in the Burnett-Mary Natural Resource Management Region by tenure.

Period	Woody vegetation clearing rate (,000ha/yr) on				
	Freehold	Leasehold	Reserves	Other Tenures	Total
1988–1991	12.787	1.469	2.387	0.030	16.674
1991–1995	2.888	0.509	1.581	0.005	4.983
1995–1997	8.959	0.400	2.454	0.008	11.822
1997–1999	10.328	0.692	3.113	0.006	14.138
1999–2000	21.350	1.435	2.569	0.006	25.359
2000–2001	10.059	0.657	4.065	0.001	14.781
2001–2002	10.246	1.425	2.897	0.000	14.568
2002–2003	13.399	2.056	3.218	0.003	18.675
2003–2004	18.442	1.980	3.940	0.005	24.366
2004–2005	22.192	1.073	3.965	0.001	27.231

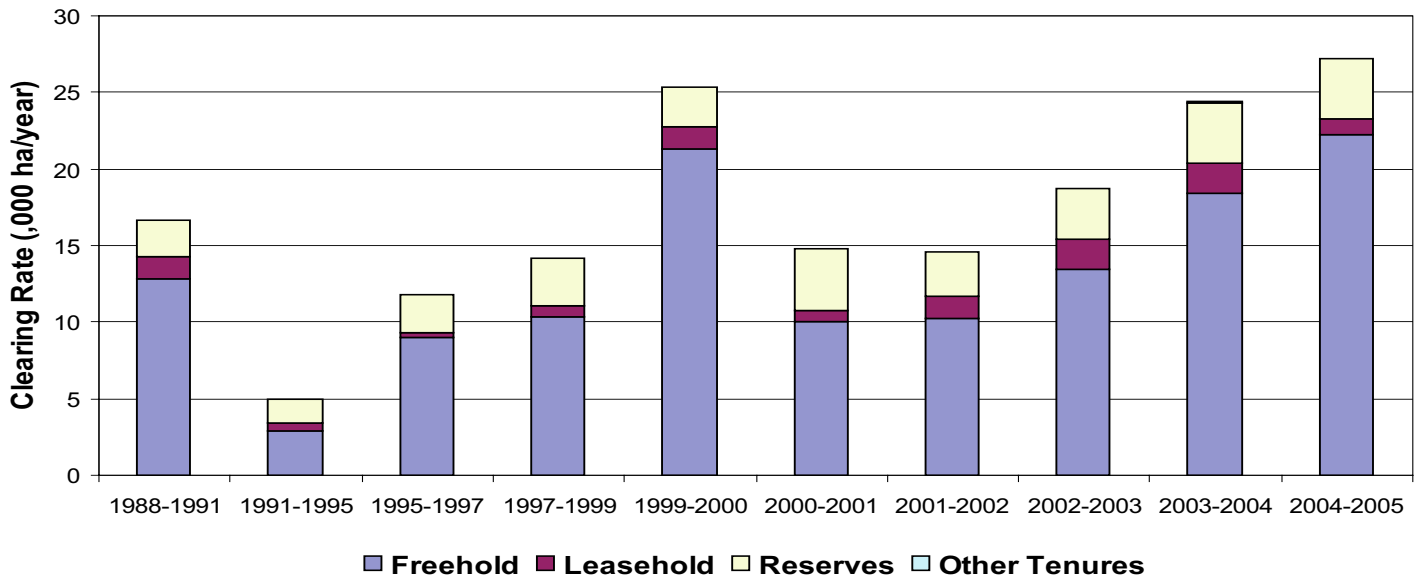


Figure 3. Woody vegetation clearing rates in the Burnett-Mary Natural Resource Management Region by tenure.



Woody Vegetation Clearing by Subcatchment

Table 3. Woody vegetation clearing rates in the Burnett-Mary Natural Resource Management Region by subcatchment #.

Period	Woody vegetation clearing rate (,000ha/yr) for						
	Baffle Ck	Barambah Ck	Boyne R/ Boondooma Ck	Burrum R	Elloitt R	Gregory R	Isis R
1988–1991	1.141	0.580	6.487	0.871	0.469	0.241	0.220
1991–1995	0.365	0.274	1.347	0.112	0.040	0.087	0.024
1995–1997	1.109	0.551	2.796	0.256	0.623	0.812	0.079
1997–1999	1.809	0.499	3.213	0.631	0.205	0.500	0.074
1999–2000	2.536	1.152	8.106	0.292	0.189	1.625	0.250
2000–2001	1.690	0.620	2.760	0.744	0.279	0.511	0.031
2001–2002	0.935	1.488	5.099	0.107	0.221	0.353	0.038
2002–2003	1.195	0.791	6.368	0.272	0.060	0.292	0.090
2003–2004	1.362	1.486	9.113	0.489	0.056	0.381	0.289
2004–2005	1.822	1.216	7.374	0.598	0.210	0.736	0.311

Table 3.continued

Period	Woody vegetation clearing rate (,000ha/yr) for							
	Kolan R	Lower Burnett R	Lower Mary R	Noosa R	Upper Burnett R	Upper Mary R	Yidney Ck	Total
1988–1991	0.592	0.594	2.631	0.848	1.521	0.481	0.005	16.689
1991–1995	0.163	0.216	0.913	0.684	0.420	0.327	0.004	4.982
1995–1997	0.359	0.569	2.461	0.522	0.872	0.800	0.001	11.824
1997–1999	0.567	0.489	3.380	0.238	2.041	0.468	0.000	14.142
1999–2000	0.836	1.443	4.348	0.242	3.780	0.513	0.000	25.324
2000–2001	0.655	0.775	3.805	0.277	2.248	0.364	0.000	14.778
2001–2002	0.442	0.401	2.482	0.919	1.707	0.367	0.003	14.566
2002–2003	0.445	0.725	3.149	0.611	4.212	0.439	0.001	18.664
2003–2004	1.228	1.246	4.331	0.819	2.849	0.697	0.009	24.352
2004–2005	1.523	2.802	5.086	1.047	4.187	0.302	0.000	27.231

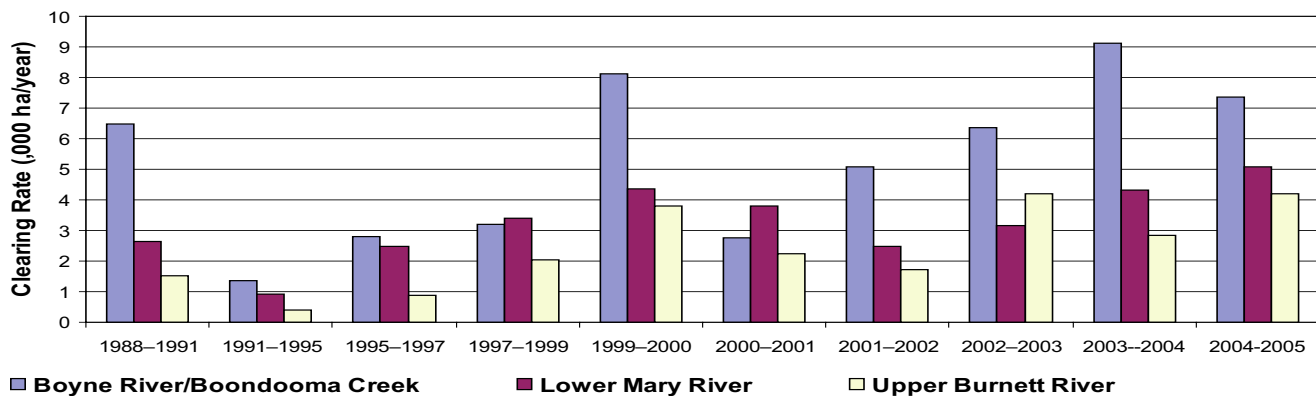


Figure 4. Woody vegetation clearing rates in the Burnett-Mary Natural Resource Management Region by subcatchment #.

Please refer to Figure 24 of the main report (NRW, 2007) for the location of each subcatchment.

Remaining Woody Vegetation

Table 4. Remaining Woody Vegetation in the Burnett-Mary Natural Resource Management Region by subcatchment.

,000 ha	Baffle Ck	Barambah Ck	Boyne R/ Boondooma Ck	Burrum R	Elloitt R	Gregory R	Isis R
Catchment area	399	594	1301	121	71	91	53
Area woody 2004	311	322	804	98	34	60	43
% of catchment woody in 2004	78	54	62	81	48	66	80

Table 4. continued

,000 ha	Kolan R	Lower Burnett R	Lower Mary R	Noosa R	Upper Burnett R	Upper Mary R	Yidney Ck	Total
Catchment area	290	569	674	99	860	270	166	5558
Area woody 2004	201	294	434	79	520	192	146	3545
% of catchment woody in 2004	69	52	64	80	61	71	88	64

Woody Vegetation Clearing by Replacement Landcover

Table 5. Woody vegetation clearing rates in the Burnett-Mary Natural Resource Management Region by replacement landcover.

Period	Woody vegetation clearing rate (,000ha/yr) for							Total*
	Pasture	Crop	Forestry	Mining	Infrastructure	Settlement		
1988–1991	11.638	1.968	2.020	0.033	0.622	0.411	16.692	
1991–1995	2.647	0.402	1.597	0.054	0.124	0.161	4.986	
1995–1997	6.214	2.486	2.488	0.114	0.155	0.371	11.828	
1997–1999	8.278	1.719	3.111	0.030	0.876	0.132	14.145	
1999–2000	21.117	0.919	2.428	0.066	0.571	0.259	25.359	
2000–2001	9.622	0.364	4.007	0.144	0.322	0.322	14.781	
2001–2002	11.161	0.100	2.888	0.115	0.167	0.137	14.568	
2002–2003	14.884	0.162	3.199	0.051	0.128	0.252	18.675	
2003–2004	22.562	0.023	1.449	0.161	0.113	0.059	24.367	
2004–2005	21.866	0.063	4.676	0.186	0.230	0.211	27.231	

* total excludes natural tree death

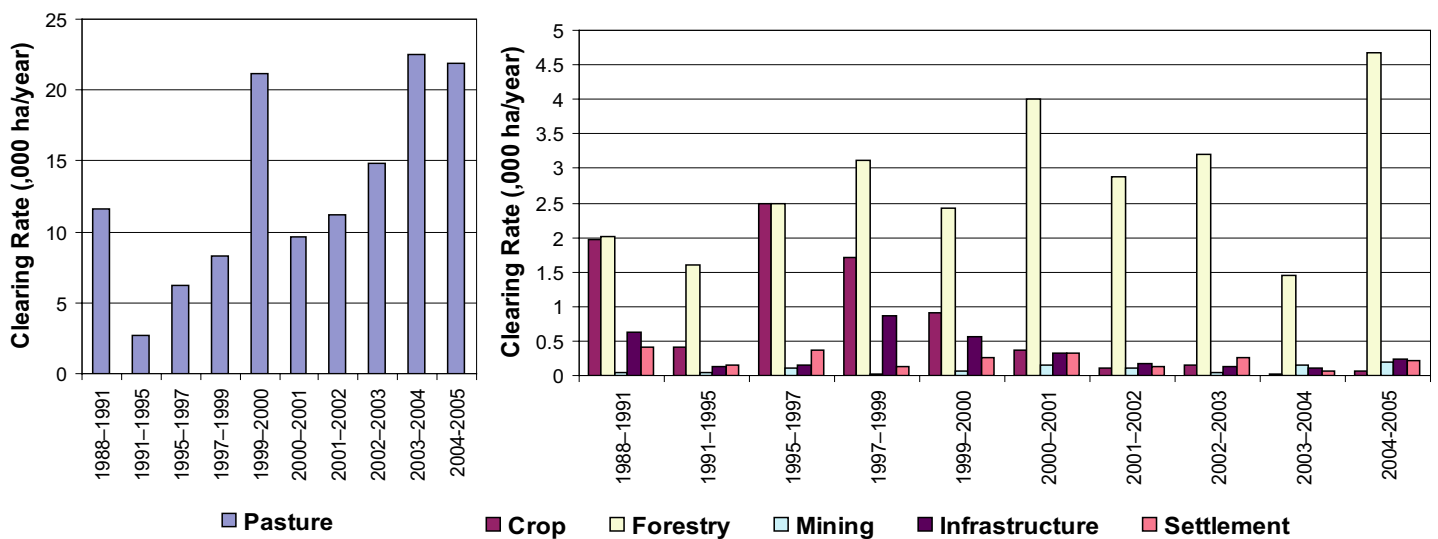


Figure 5. Woody vegetation clearing rates in the Burnett-Mary Natural Resource Management Region by replacement landcover.

This fact sheet is 3 of 14 in a series detailing land cover change in Queensland's Natural Resource Management Regions. These fact sheets are addenda to the report: Department of Natural Resources and Water (2007). Land cover change in Queensland 2004–2005: a Statewide Landcover and Trees Study (SLATS) Report, Feb, 2007. Department of Natural Resources and Water, Brisbane.

Please refer to this report for further background, methods and explanatory notes.

The QLD Government supports and encourages the dissemination and exchange of information. However, copyright protects this document. The State of Queensland has no objection to this material being reproduced, made available online or electronically, provided it is for your personal, non-commercial use, or use within your organisation; the material remains unaltered; and the State of Queensland is recognised as the owner.

© The State of Queensland 2007.

For further information:
 Statewide Landcover and Trees Study
 80 Meiers Road
 Indooroopilly QLD 4068
 Phone: 61 7 3896 9605
 Email: geoinfo@nrw.qld.gov.au
 Web site: <http://www.nrw.qld.gov.au/slats>