



# Land Cover Change in the **Burdekin** Natural Resource Management Region **2004–2005**

## Summary

2004–2005 saw the lowest measured woody vegetation clearing rate in the Burdekin region since satellite monitoring began, being 24,539 ha/year.

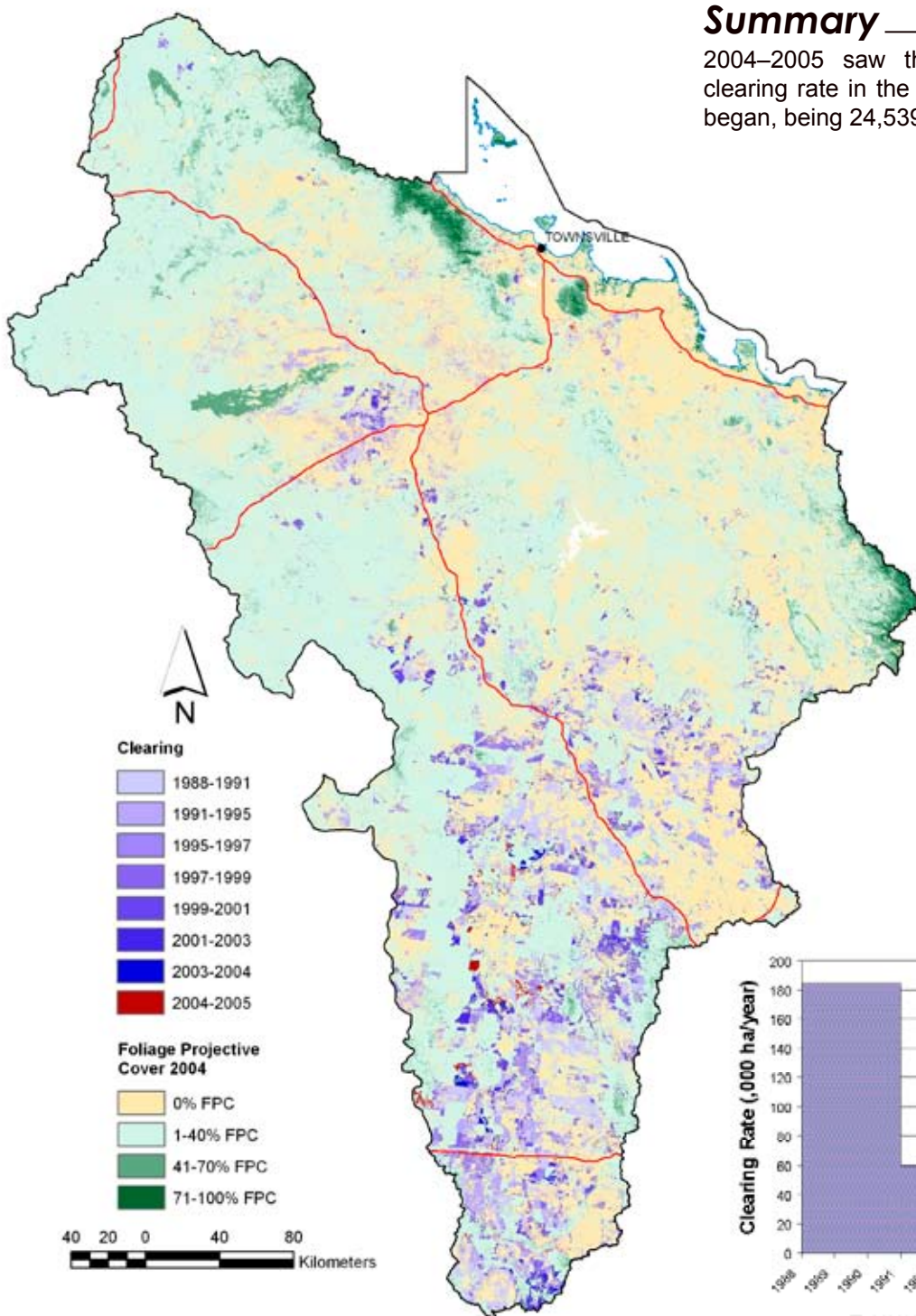


Figure 1. Woody vegetation clearing for each change period.

Figure 2. Woody vegetation clearing rates in the Burdekin Natural Resource Management Region.

## Woody vegetation Clearing by Remnant Status

Table 1. Remnant and Non-remnant Clearing Rates in the Burdekin Natural Resource Management Region.

Period	Woody vegetation clearing rate (,000ha/yr) of		
	Non-remnant woody	Remnant woody*	Total woody
1999–2000	33.557	80.086	113.642
2000–2001	26.807	48.933	75.739
2001–2002	35.783	43.840	79.622
2002–2003	7.821	24.523	32.344
2003–2004	16.091	23.679	39.770
2004–2005	7.985	16.554	24.539

\* Regional Ecosystem remnant mapping prior to 1999 not used in this analysis.

## Woody Vegetation Clearing by Tenure

Table 2. Woody vegetation clearing rates in the Burdekin Natural Resource Management Region by tenure.

Period	Woody vegetation clearing rate (,000ha/yr) on				
	Freehold	Leasehold	Reserves	Other Tenures	Total
1988–1991	36.812	146.770	0.167	0.414	184.163
1991–1995	12.932	47.020	0.015	0.087	60.054
1995–1997	12.762	41.575	0.047	0.264	54.649
1997–1999	10.722	39.573	0.023	0.765	51.082
1999–2000	25.134	88.417	0.064	0.028	113.642
2000–2001	5.860	69.865	0.008	0.006	75.739
2001–2002	8.468	71.072	0.032	0.051	79.622
2002–2003	3.440	28.887	0.010	0.006	32.344
2003–2004	5.961	33.662	0.041	0.106	39.770
2004–2005	3.619	20.867	0.052	0.001	24.539

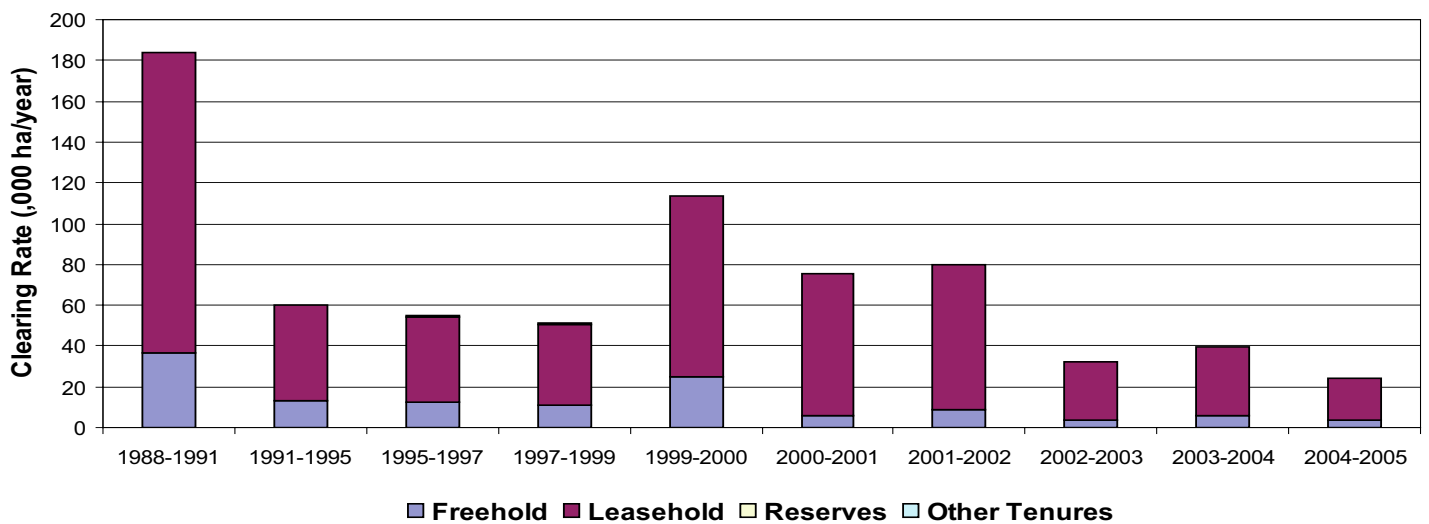
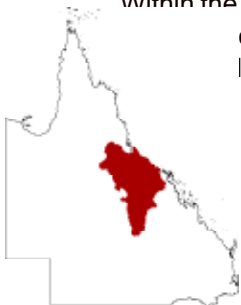


Figure 3. Woody vegetation clearing rates in the Burdekin Natural Resource Management Region

Within the Burdekin NRM Region, 16% of the region old tenure and 78% is leasehold tenure (on the 2001 DCDB).



## Woody Vegetation Clearing by Subcatchment

Table 3. Clearing Rates in the Burdekin Natural Resource Management Region by subcatchment #.

Period	Woody vegetation clearing rate (,000ha/yr) for						
	Barratta Creek	Belyando River	Black River	Bohle River	Bowen River	Don River	Haughton River
1988–1991	1.388	75.756	0.390	0.142	1.512	2.236	1.138
1991–1995	0.305	39.440	0.186	0.122	0.264	0.392	0.275
1995–1997	0.697	30.271	0.371	0.078	0.569	0.302	0.470
1997–1999	0.971	29.532	0.389	0.408	0.179	0.193	0.209
1999–2000	0.155	48.079	0.574	0.828	0.175	0.251	1.138
2000–2001	0.045	31.072	0.049	0.124	0.531	0.059	0.147
2001–2002	0.002	33.672	0.180	0.019	0.438	0.057	0.100
2002–2003	0.000	17.209	0.063	0.006	0.090	0.030	0.075
2003–2004	0.084	16.894	0.437	0.278	2.690	0.207	0.153
2004–2005	0.084	16.946	0.142	0.262	0.314	0.159	0.569

Table 3. continued

Period	Woody vegetation clearing rate (,000ha/yr) for					
	Lower Burdekin River	Mistake Creek	Ross River	Suttor River	Upper Burdekin River	Total
1988–1991	2.208	34.333	0.121	57.214	7.759	184.196
1991–1995	0.261	4.146	0.089	14.030	0.540	60.050
1995–1997	0.585	9.671	0.222	10.119	1.275	54.630
1997–1999	0.548	8.493	0.244	9.249	0.641	51.055
1999–2000	0.255	30.704	0.729	26.300	4.419	113.608
2000–2001	0.150	16.322	0.112	22.417	4.691	75.719
2001–2002	0.089	14.149	0.025	25.743	5.078	79.551
2002–2003	0.043	5.532	0.169	7.540	1.579	32.336
2003–2004	0.174	7.237	0.170	9.895	1.547	39.766
2004–2005	0.084	3.756	0.041	1.632	0.550	24.539

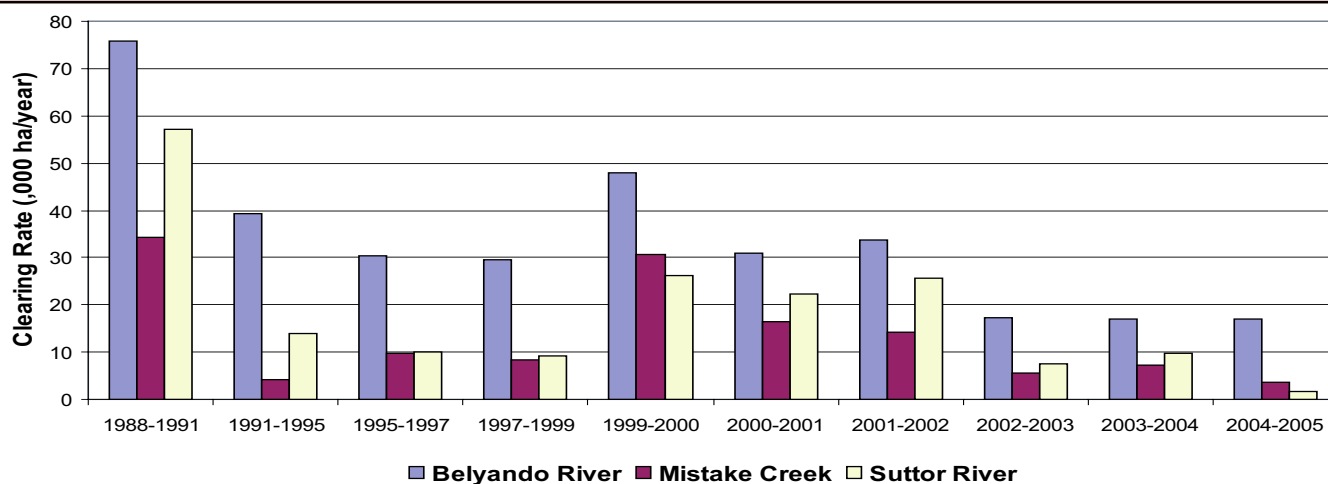


Figure 4. Woody vegetation clearing rates in the Burdekin Natural Resource Management Region by subcatchment #.

\* Please refer to Figure 24 of the main report (NRW, 2007) for the location of each subcatchment.

## Remaining Woody Vegetation

Table 4. Remaining woody vegetation Burdekin Natural Resource Management Region by subcatchment.

,000 ha	Barratta Creek	Belyando River	Black River	Bohle River	Bowen River	Don River	Haughton River
Catchment area	183	2673	106	37	945	369	222
Area woody 2004	48	1492	80	11	601	170	122
% of catchment woody in 2004	26	56	75	31	64	46	55

Table 4. continued

,000 ha	Lower Burdekin River	Mistake Creek	Ross River	Suttor River	Upper Burdekin River	Total
Catchment area	1047	910	134	3811	3625	14062
Area woody 2004	527	475	75	2298	2683	8581
% of catchment woody in 2004	50	52	56	60	74	61

## Woody vegetation Clearing by Replacement Landcover

Table 5. Woody vegetation clearing rates in the Burdekin Natural Resource Management Region by replacement landcover.

Period	Woody vegetation clearing rate (,000ha/yr) for						Total*
	Pasture	Crop	Forestry	Mining	Infrastructure	Settlement	
1988–1991	178.877	2.170	0.000	0.335	2.756	0.091	184.229
1991–1995	58.008	1.335	0.007	0.162	0.431	0.112	60.055
1995–1997	50.011	3.288	0.001	0.321	0.941	0.096	54.658
1997–1999	47.893	1.490	0.033	0.139	1.478	0.050	51.083
1999–2000	111.344	0.218	0.009	0.059	1.791	0.221	113.642
2000–2001	72.627	0.309	0.004	0.067	2.636	0.096	75.739
2001–2002	77.296	0.002	0.000	0.065	2.256	0.002	79.622
2002–2003	31.159	0.019	0.000	0.053	1.113	0.000	32.344
2003–2004	37.590	0.080	0.000	0.182	1.704	0.214	39.770
2004–2005	23.506	0.000	0.019	0.193	0.598	0.223	24.539

\* total excludes natural tree death

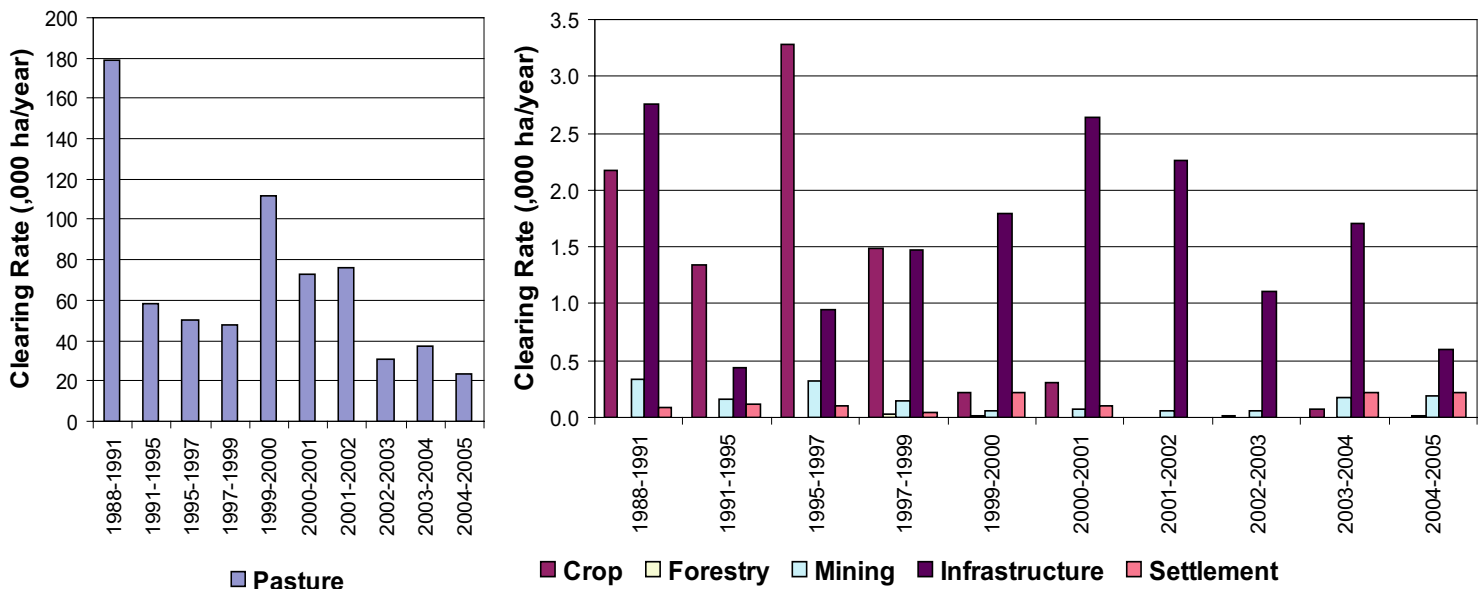


Figure 5. Woody vegetation clearing rates in the Burdekin Natural Resource Management Region by replacement

This fact sheet is 2 of 14 in a series detailing land cover change in Queensland's Natural Resource Management Regions. These fact sheets are addenda to the report:  
 Department of Natural Resources and Water (2007). Land cover change in Queensland 2004–2005: a Statewide Landcover and Trees Study (SLATS) Report, Feb, 2007. Department of Natural Resources and Water, Brisbane.  
**Please refer to this report for further background, methods and explanatory notes.**



The QLD Government supports and encourages the dissemination and exchange of information. However, copyright protects this document. The State of Queensland has no objection to this material being reproduced, made available online or electronically, provided it is for your personal, non-commercial use, or use within your organisation; the material remains unaltered; and the State of Queensland is recognised as the owner.

© The State of Queensland 2007.

For further information:  
 Statewide Landcover and Trees Study  
 80 Meiers Road  
 Indooroopilly QLD 4068  
 Phone: 61 7 3896 9605  
 Email: [geoinfo@nrw.qld.gov.au](mailto:geoinfo@nrw.qld.gov.au)  
 Web site: <http://www.nrw.qld.gov.au/slats>