



# Land Cover Change in the **Border Rivers** Natural Resource Management Region **2004–2005**



## Summary

The 2004–2005 period saw a dramatic decrease in remnant woody vegetation clearing within the Border Rivers region. Remnant woody vegetation clearing made up only 15% of all woody vegetation clearing.

The woody vegetation clearing rate for 2004–2005 for the Border Rivers region was 14,669 ha/year.

Figure 1. Woody vegetation clearing rates in the Border Rivers Natural Resource Management Region.

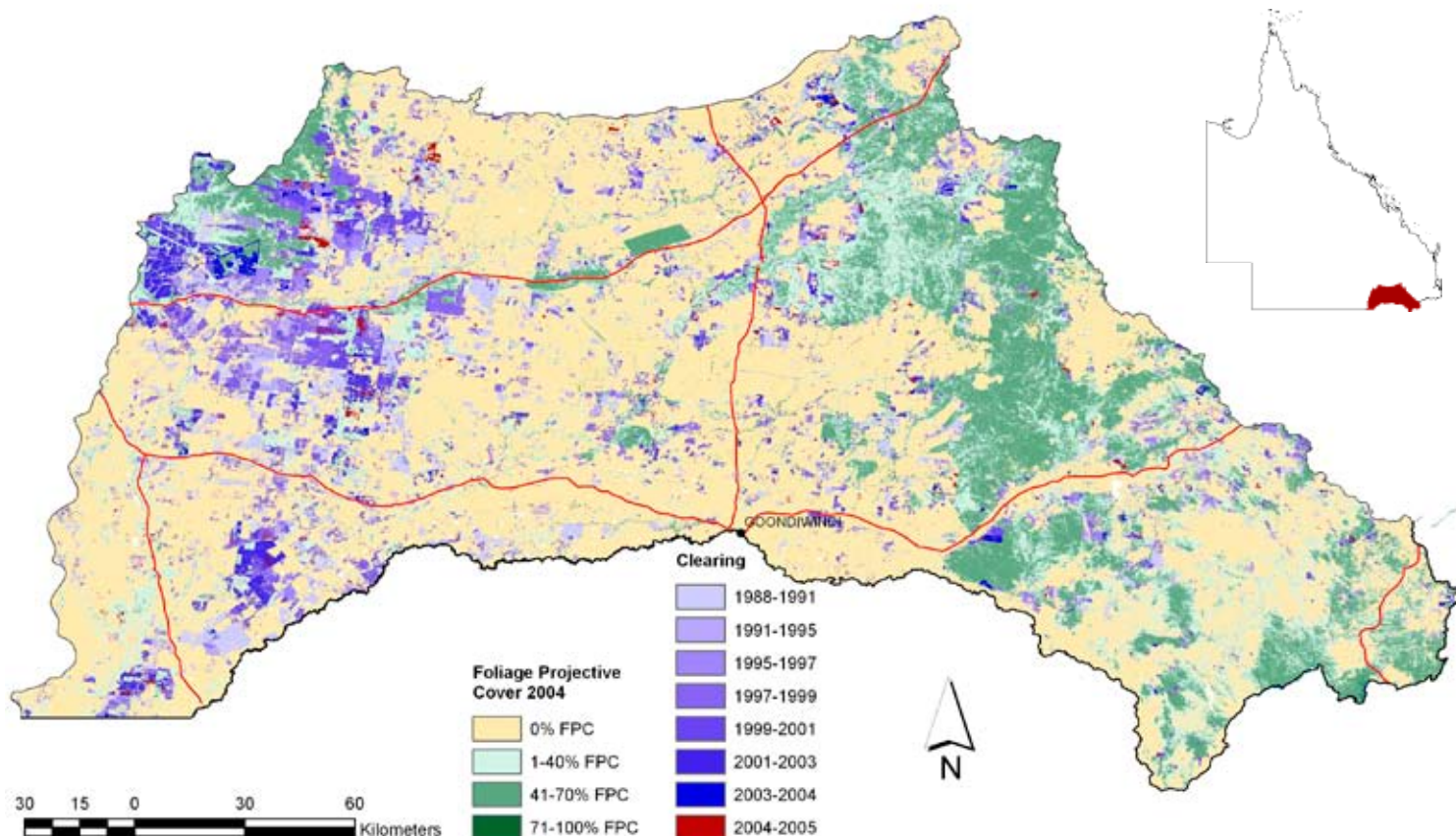


Figure 2. Woody vegetation clearing for each change period.

## Woody Vegetation Clearing by Remnant Status

Table 1. Remnant and Non-remnant woody clearing rates in the Border Rivers Natural Resource Management Region.

Period	Woody vegetation clearing rate (,000ha/yr) of		
	Non-remnant woody	Remnant woody*	Total woody
1999–2000	23.165	38.377	61.542
2000–2001	4.920	2.739	7.658
2001–2002	20.094	16.377	36.471
2002–2003	22.432	10.105	32.536
2003–2004	12.352	7.572	19.925
2004–2005	12.417	2.252	14.669

\* Regional Ecosystem remnant mapping prior to 1999 not used in this analysis.

## Woody Vegetation Clearing by Tenure

Table 2. Woody vegetation clearing rates in the Border Rivers Natural Resource Management

Period	Woody Vegetation Clearing Rate (,000ha/yr) on				
	Freehold	Leasehold	Reserves	Other Tenures	Total
1988–1991	43.817	9.208	0.191	0.273	53.488
1991–1995	8.060	1.363	0.064	0.017	9.504
1995–1997	24.036	3.849	0.244	0.087	28.217
1997–1999	40.623	7.174	0.495	0.030	48.323
1999–2000	58.762	2.412	0.366	0.000	61.540
2000–2001	7.337	0.258	0.053	0.000	7.648
2001–2002	34.447	1.915	0.107	0.000	36.469
2002–2003	30.732	1.484	0.318	0.000	32.534
2003–2004	18.785	0.881	0.256	0.000	19.922
2004–2005	12.772	1.632	0.265	0.000	14.669

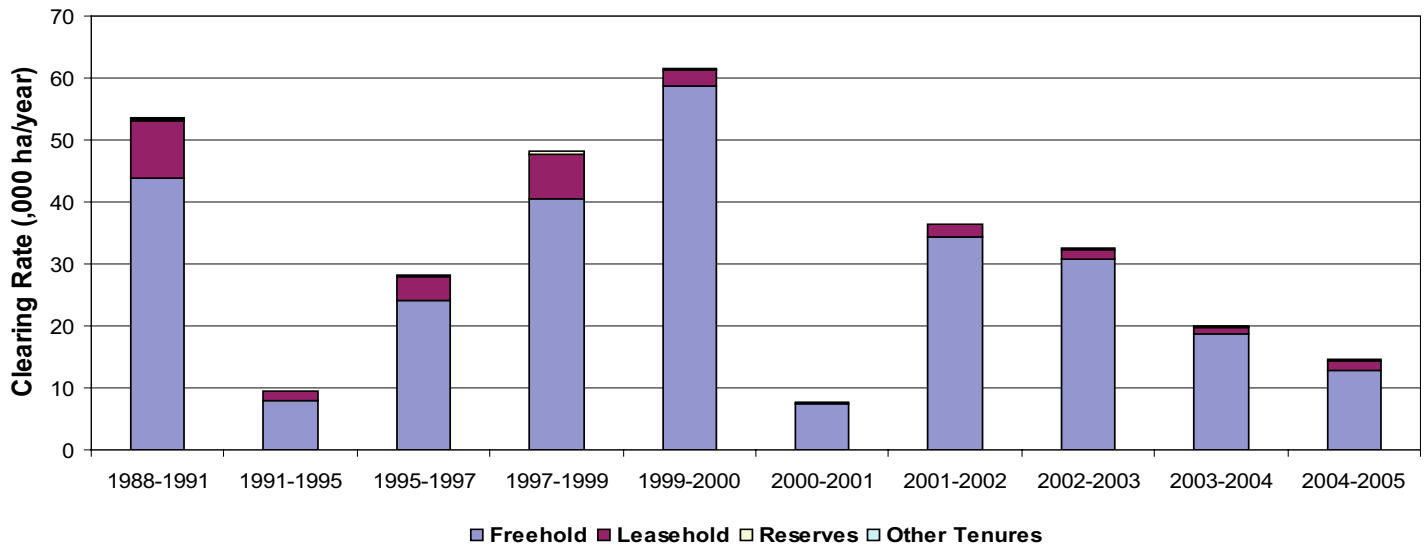
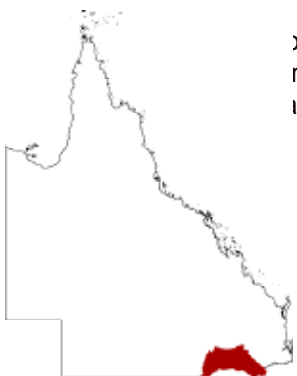


Figure 3. Woody vegetation clearing rates in the Border Rivers Natural Resource Management



Border Rivers NRM Region, 80% of the Freehold tenure and 7% is leasehold used on the 2001 DCDB).

## Woody Vegetation Clearing by Subcatchment

Table 3. Woody vegetation clearing rates in the Border Rivers Natural Resource Management Region by subcatchment #.

Period	Woody Vegetation Clearing Rate (,000ha/yr) for				Total
	Macintyre Brook	Moonie River	Severn River	Weir River	
1988–1991	4.947	28.159	1.439	18.931	53.477
1991–1995	1.369	4.839	0.701	2.593	9.502
1995–1997	3.193	17.233	1.257	6.526	28.209
1997–1999	3.667	31.127	0.979	12.525	48.298
1999–2000	2.509	42.073	1.326	15.590	61.498
2000–2001	0.791	3.690	0.372	2.798	7.651
2001–2002	0.606	25.798	0.480	9.579	36.463
2002–2003	3.185	17.503	1.221	10.619	32.528
2003–2004	2.560	11.727	1.607	4.028	19.925
2004–2005	1.601	8.175	0.559	4.333	14.669

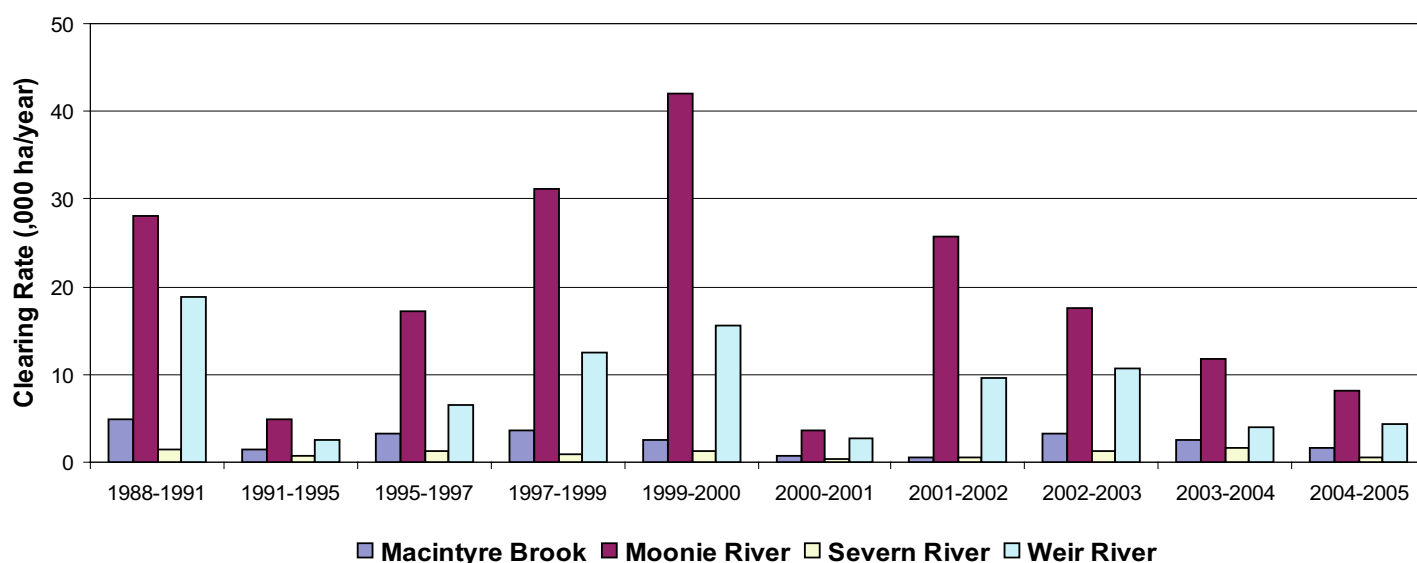


Figure 4. Woody vegetation clearing rates in the Border Rivers Natural Resource Management Region by subcatchment.

# Please refer to Figure 24 of the main report (NRW, 2007) for the location of each subcatchment.

## Remaining Woody Vegetation

Table 4. Remaining woody vegetation in the Border Rivers Natural Resource Management Region by subcatchment.

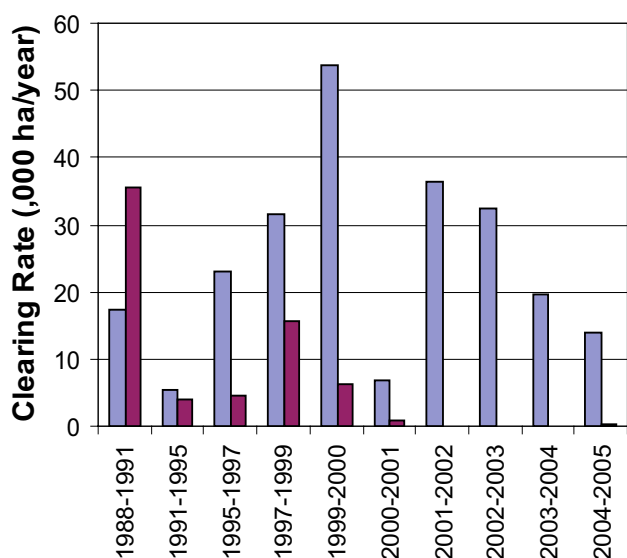
(,000 ha)	Macintyre Brook	Moonie River	Severn River	Weir River	Total
Catchment area	431	1442	432	1540	3845
Area woody 2004	222	424	230	525	1402
% of catchment woody in 2004	52	29	53	34	36

# Woody Vegetation Clearing by Replacement Landcover

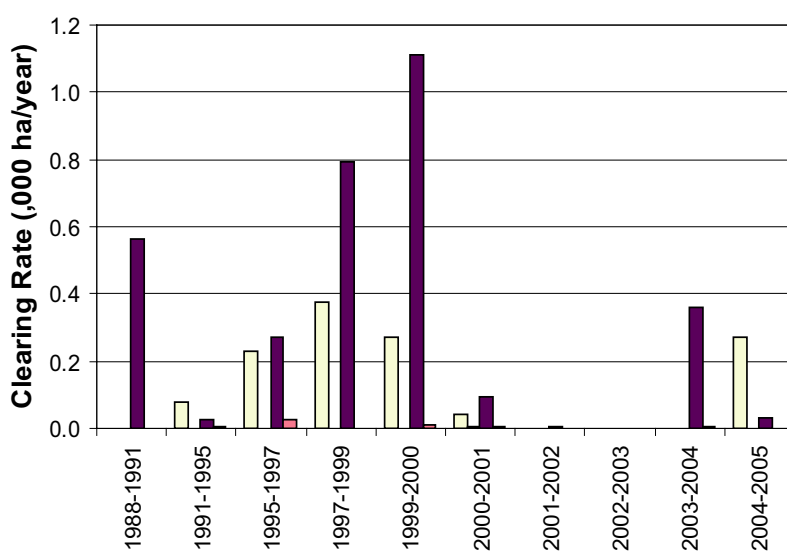
Table 5. Woody vegetation clearing rates in the Border Rivers Natural Resource Management Region by replacement landcover.

Period	Woody Vegetation Clearing rate (,000ha/yr) for						Total*
	Pasture	Crop	Forestry	Mining	Infrastructure	Settlement	
1988–1991	17.285	35.646	0.000	0.000	0.562	0.001	53.495
1991–1995	5.493	3.904	0.077	0.000	0.026	0.006	9.506
1995–1997	23.125	4.565	0.230	0.002	0.270	0.027	28.218
1997–1999	31.638	15.517	0.377	0.000	0.796	0.000	48.327
1999–2000	53.817	6.334	0.271	0.000	1.110	0.010	61.542
2000–2001	6.718	0.794	0.042	0.007	0.093	0.005	7.658
2001–2002	36.430	0.033	0.000	0.000	0.007	0.000	36.471
2002–2003	32.533	0.000	0.000	0.003	0.000	0.000	32.536
2003–2004	19.521	0.039	0.000	0.000	0.358	0.007	19.925
2004–2005	14.047	0.321	0.271	0.000	0.031	0.000	14.669W

\* total excludes natural tree death



■ Pasture ■ Crop



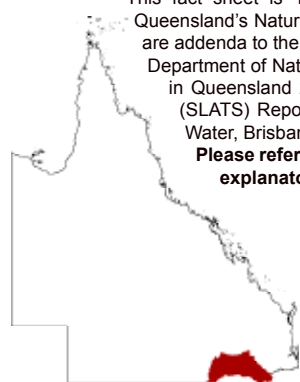
■ Forestry ■ Mining ■ Infrastructure ■ Settlement

Figure 5. Woody vegetation clearing rates in the Border Rivers Natural Resource Management Region by replacement

This fact sheet is 1 of 14 in a series detailing land cover change in Queensland's Natural Resource Management Regions. These fact sheets are addenda to the report:

Department of Natural Resources and Water (2007). Land cover change in Queensland 2004–2005: a Statewide Landcover and Trees Study (SLATS) Report, Feb, 2007. Department of Natural Resources and Water, Brisbane.

**Please refer to this report for further background, methods and explanatory notes.**



The QLD Government supports and encourages the dissemination and exchange of information. However, copyright protects this document. The State of Queensland has no objection to this material being reproduced, made available online or electronically, provided it is for your personal, non-commercial use, or use within your organisation; the material remains unaltered; and the State of Queensland is recognised as the owner.

© The State of Queensland 2007.

For further information:  
 Statewide Landcover and Trees Study  
 80 Meiers Road  
 Indooroopilly QLD 4068  
 Phone: 61 7 3896 9605  
 Email: [geoinfo@nrw.qld.gov.au](mailto:geoinfo@nrw.qld.gov.au)  
 Web site: <http://www.nrw.qld.gov.au/slats>