



Land cover change in the Wet Tropics Natural Resource Management region

2006-07

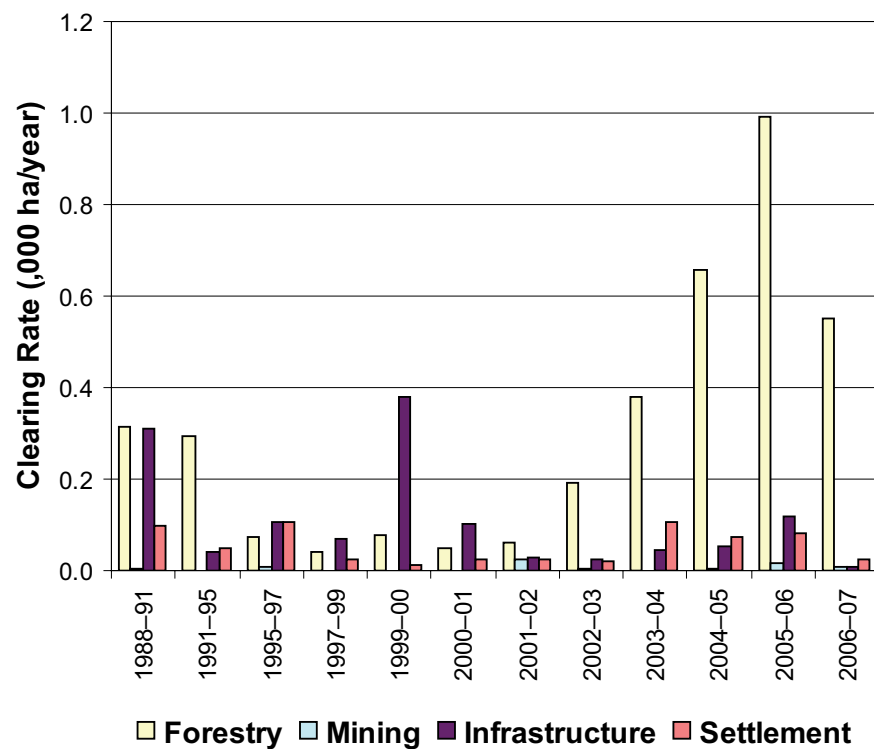
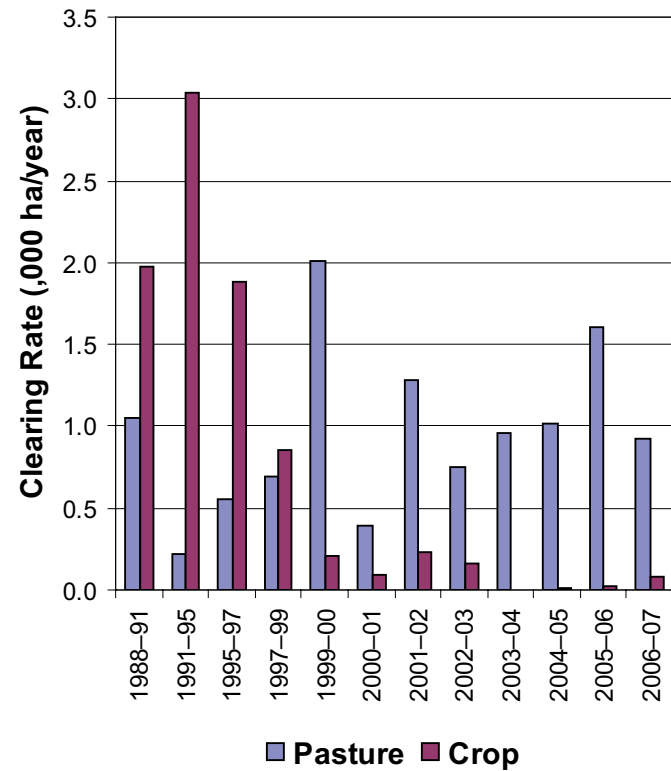


Figure 4. Woody vegetation clearing rates in the Wet Tropics Natural Resource Management region by replacement land cover.

This fact sheet is 14 of 14 in a series detailing land cover change in Queensland's Natural Resource Management regions. These fact sheets are addenda to the report: Department of Natural Resources and Water (2008). *Land cover change in Queensland 2006-07: a Statewide Landcover and Trees Study (SLATS) Report*, Dec, 2008. Department of Natural Resources and Water, Brisbane.

Please refer to this report for further background, methods and explanatory notes. The Queensland Government supports and encourages the dissemination and exchange of information. However, copyright protects this document. The State of Queensland has no objection to this material being reproduced, made available online or electronically, provided it is for your personal, non-commercial use, or use within your organisation; the material remains unaltered; and the State of Queensland is recognised as the owner.

© The State of Queensland 2008.

For further information:
Statewide Landcover and Trees Study
80 Meiers Road
Indooroopilly QLD 4068
Phone: 61 7 3896 9605
Email: nrscdatacoordinator@nrw.qld.gov.au

www.nrw.qld.gov.au/slats



#28780

Summary

The woody vegetation clearing rate for the Wet Tropics region for 2006-07 was 1 591 hectares per year (ha/yr).

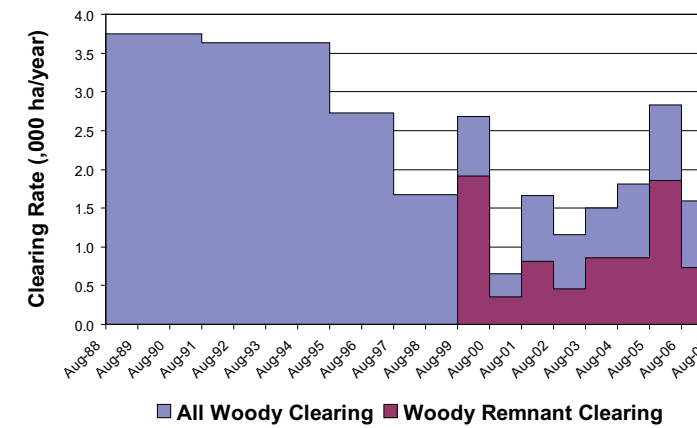


Figure 1. Woody vegetation clearing rates in the Wet Tropics Natural Resource Management region.

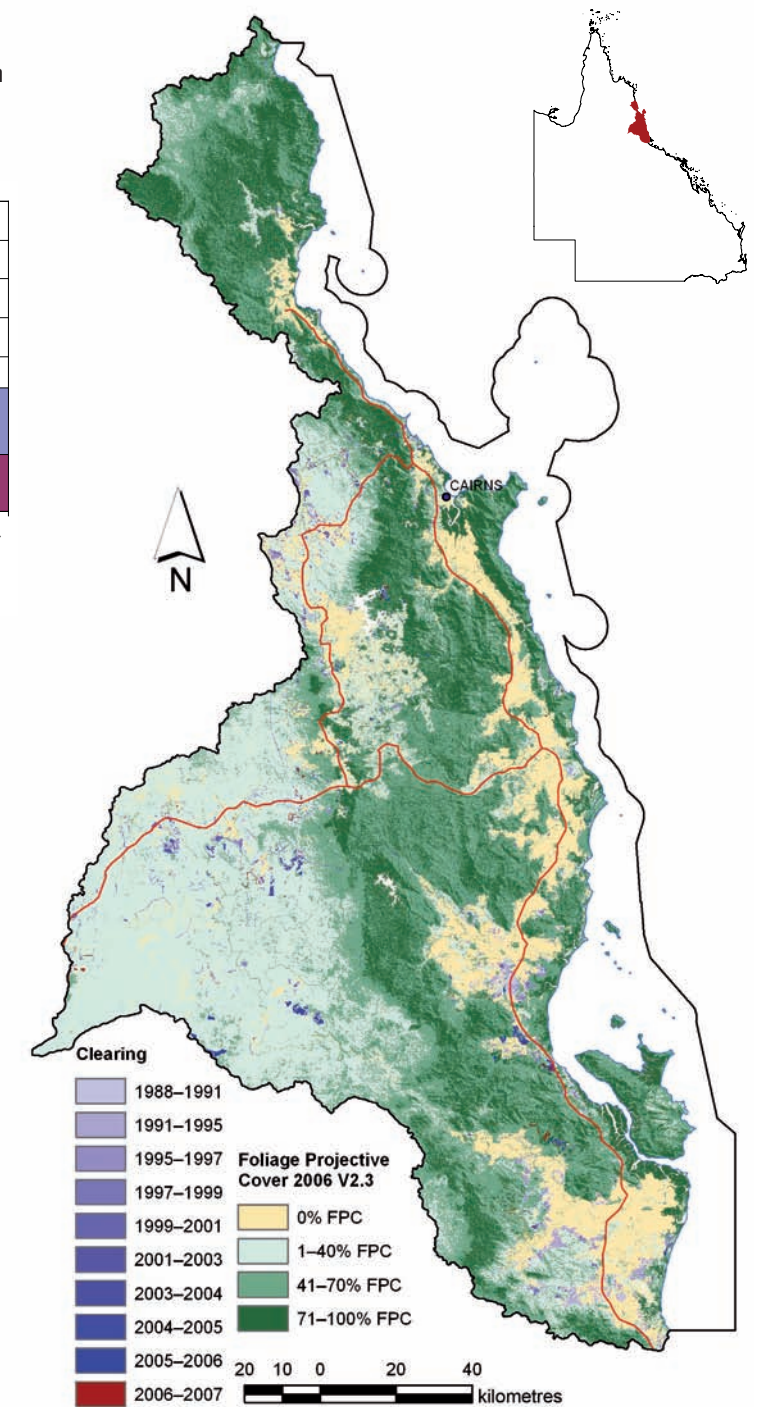


Figure 2. Woody vegetation clearing for each change period.

Woody vegetation clearing by remnant status

Table 1. Remnant and non-remnant woody clearing rates in the Wet Tropics Natural Resource Management region.

Period	Woody vegetation clearing rate (,000ha/yr) of		
	Non-remnant woody	Remnant woody*	Total woody
1999-00	0.776	1.911	2.687
2000-01	0.306	0.351	0.657
2001-02	0.845	0.814	1.659
2002-03	0.691	0.464	1.155
2003-04	0.633	0.862	1.496
2004-05	0.943	0.863	1.806
2005-06	0.976	1.858	2.834
2006-07	0.858	0.733	1.591

* Regional ecosystem remnant mapping prior to 1999 not used in this analysis.

Woody vegetation clearing by tenure

Table 2. Woody vegetation clearing rates in the Wet Tropics Natural Resource Management region by tenure.

Period	Woody vegetation clearing rate (,000ha/yr) on				
	Freehold	Leasehold	Reserves	Other tenures	Total
1988-91	2.533	0.711	0.469	0.021	3.733
1991-95	2.712	0.613	0.291	0.005	3.620
1995-97	2.234	0.396	0.082	0.006	2.719
1997-99	1.156	0.451	0.059	0.008	1.675
1999-00	1.966	0.585	0.136	0.000	2.687
2000-01	0.476	0.119	0.061	0.001	0.657
2001-02	0.889	0.662	0.107	0.000	1.659
2002-03	0.606	0.336	0.208	0.004	1.155
2003-04	0.965	0.154	0.377	0.000	1.496
2004-05	0.935	0.385	0.486	0.000	1.806
2005-06	0.938	1.328	0.561	0.007	2.834
2006-07	0.837	0.192	0.561	0.001	1.591

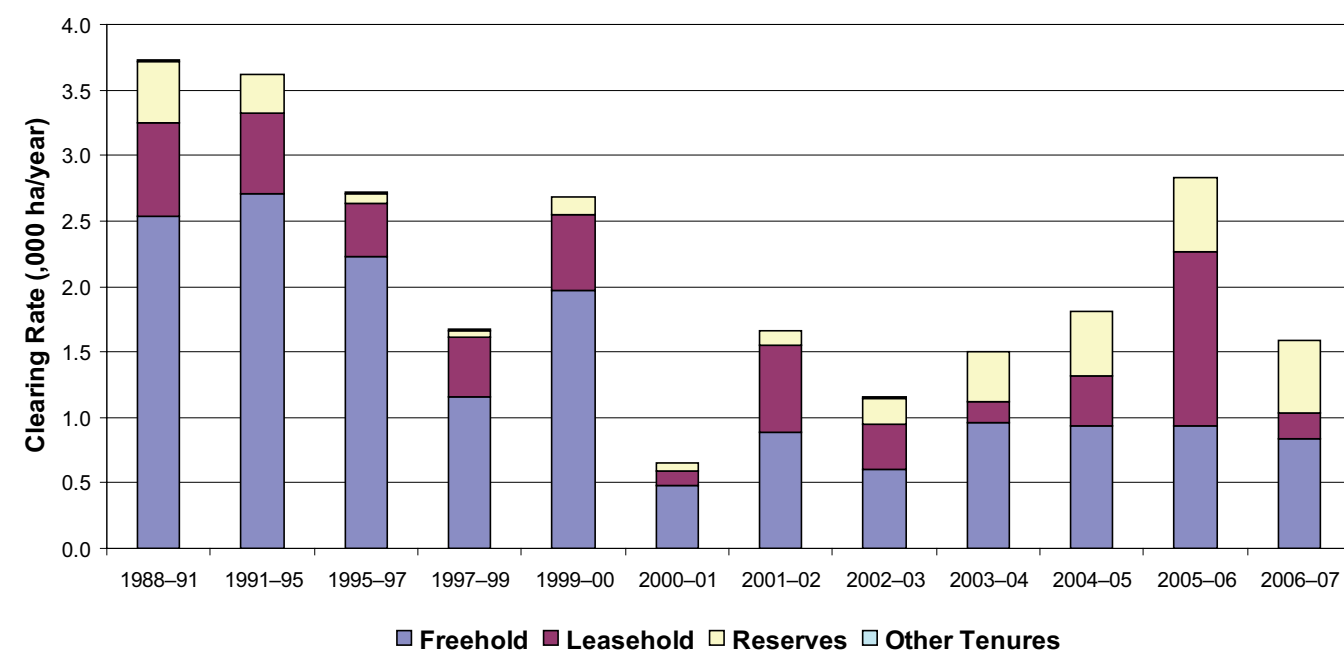


Figure 3. Woody vegetation clearing rates in the Wet Tropics Natural Resource Management region by tenure.

Woody vegetation clearing by subcatchment

Table 3. Woody vegetation clearing rates in the Wet Tropics Natural Resource Management region by subcatchment #.

Period	Woody vegetation clearing rate (,000ha/yr) for					
	Barron River	Daintree River	Endeavour River	Herbert River	Mossman River	Mulgrave River
2006-07	0.209	0.000	0.001	1.041	0.037	0.030

Table 3. continued

Period	Woody vegetation clearing rate (,000ha/yr) for					
	Murray River	North Johnstone River	Russell River	South Johnstone River	Tully River	Total
2006-07	0.223	0.003	0.024	0.012	0.010	1.591

Please refer to Figure 26 of the main report (NRW, 2008) for the location of each subcatchment.

Remaining woody vegetation

Table 4. Remaining Woody Vegetation in the Wet Tropics Natural Resource Management region by subcatchment.

	Barron River	Daintree River	Endeavour River	Herbert River	Hinchinbrook Island	Mossman River
Catchment area (,000 ha)	219	210	8	984	39	47
Area woody 2006 V2.3 (,000 ha)	175	204	8	857	38	41
% of catchment woody in 2006	80	97	98	87	98	87

Table 4. continued

	Mulgrave River	Murray River	North Johnstone River	Russell River	South Johnstone River	Tully River	Total
Catchment area (,000 ha)	131	111	103	67	129	168	2221
Area woody 2006 V2.3 (,000 ha)	109	87	84	52	92	137	1888
% of catchment woody in 2006	83	79	82	78	71	81	85

Woody vegetation clearing by replacement land cover

Table 5. Woody vegetation clearing rates in the Wet Tropics Natural Resource Management region by replacement land cover.

Period	Woody vegetation clearing rate (,000ha/yr) for						
	Pasture	Crop	Forestry	Mining	Infrastructure	Settlement	Total*
1988-91	1.050	1.973	0.313	0.003	0.310	0.097	3.746
1991-95	0.221	3.036	0.294	0.000	0.040	0.048	3.638
1995-97	0.552	1.885	0.073	0.006	0.105	0.108	2.728
1997-99	0.689	0.852	0.042	0.000	0.069	0.027	1.679
1999-00	2.006	0.210	0.078	0.000	0.381	0.012	2.687
2000-01	0.392	0.089	0.051	0.000	0.103	0.024	0.657
2001-02	1.286	0.236	0.060	0.023	0.027	0.026	1.659
2002-03	0.750	0.165	0.191	0.006	0.023	0.020	1.155
2003-04	0.961	0.002	0.381	0.001	0.044	0.106	1.496
2004-05	1.011	0.012	0.655	0.004	0.052	0.072	1.806
2005-06	1.611	0.018	0.990	0.015	0.118	0.081	2.834
2006-07	0.920	0.079	0.550	0.007	0.009	0.026	1.591

* total excludes natural tree death