



Land cover change in the Southern Gulf Natural Resource Management region

2006-07

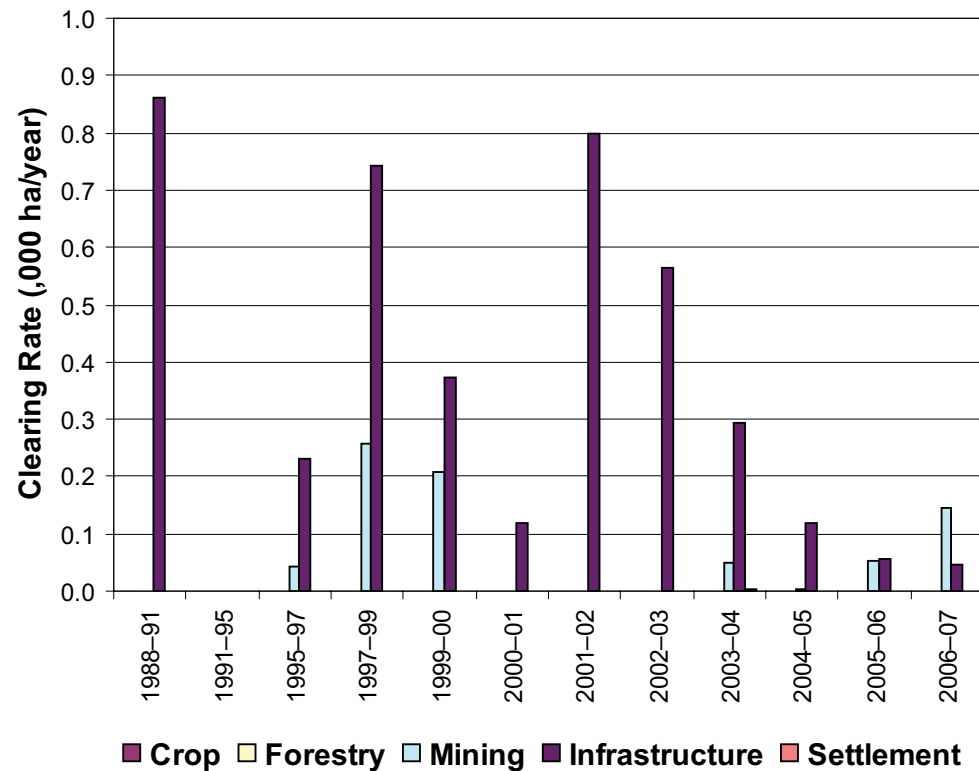
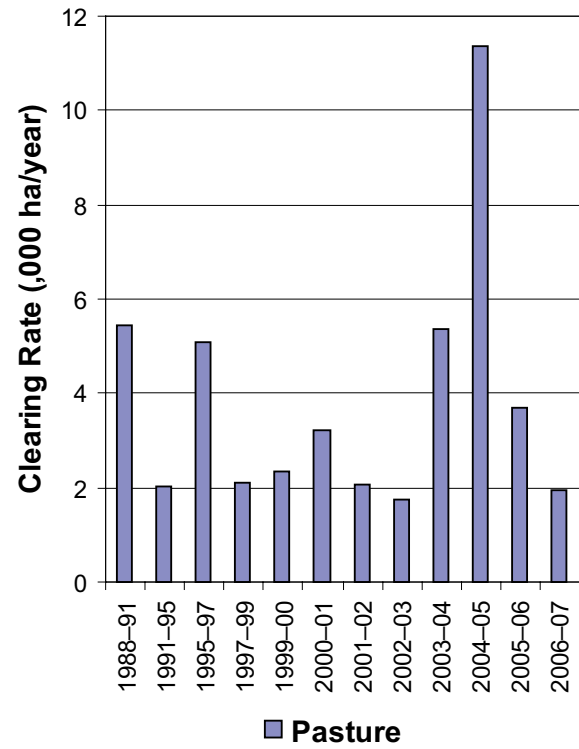


Figure 4. Woody vegetation clearing rates in the Southern Gulf Natural Resource Management region by replacement land cover.

This fact sheet is 13 of 14 in a series detailing land cover change in Queensland's Natural Resource Management regions. These fact sheets are addenda to the report: Department of Natural Resources and Water (2008). *Land cover change in Queensland 2006-07: a Statewide Landcover and Trees Study (SLATS) Report*, Dec, 2008. Department of Natural Resources and Water, Brisbane.

Please refer to this report for further background, methods and explanatory notes.

The Queensland Government supports and encourages the dissemination and exchange of information. However, copyright protects this document. The State of Queensland has no objection to this material being reproduced, made available online or electronically, provided it is for your personal, non-commercial use, or use within your organisation; the material remains unaltered; and the State of Queensland is recognised as the owner.

© The State of Queensland 2008.

For further information:
Statewide Landcover and Trees Study
80 Meiers Road
Indooroopilly QLD 4068
Phone: 61 7 3896 9605
Email: nrscdatacoordinator@nrw.qld.gov.au

www.nrw.qld.gov.au/slats



#28780

Summary

The woody vegetation clearing rate for the Southern Gulf region for 2006-07 was 2 155 hectares per year (ha/yr).

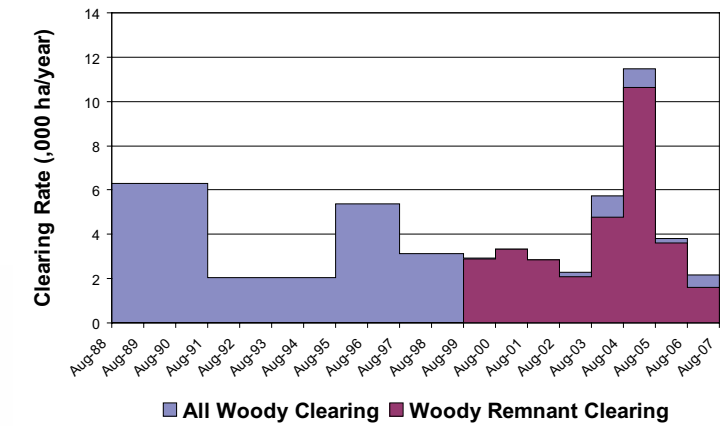


Figure 1. Woody vegetation clearing rates in the Southern Gulf Natural Resource Management region.

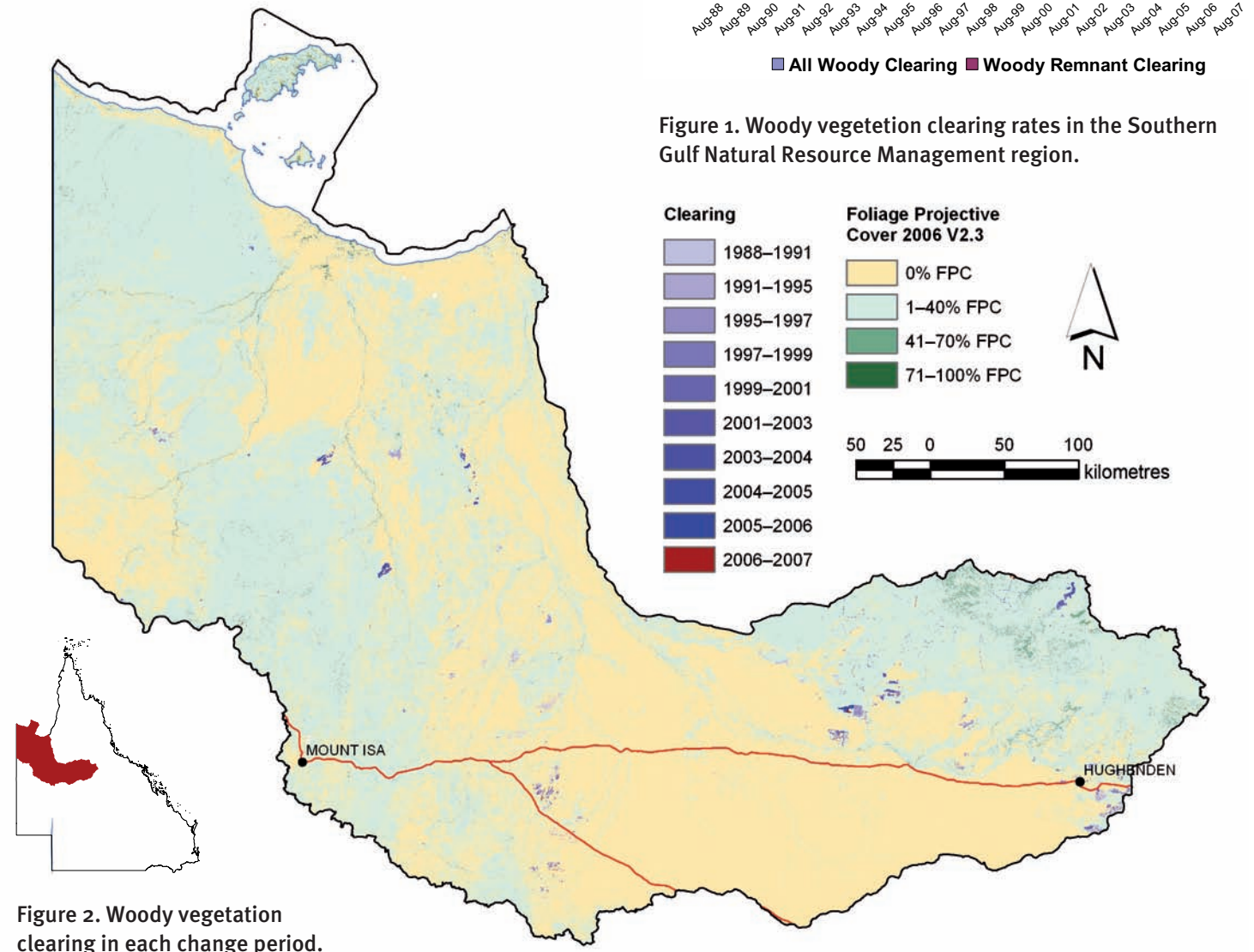


Figure 2. Woody vegetation clearing in each change period.

Woody vegetation clearing by remnant status

Table 1. Remnant and non-remnant woody clearing rates in the Southern Gulf Natural Resource Management region.

Period	Woody vegetation clearing rate (,000ha/yr) of		
	Non-remnant woody	Remnant woody*	Total woody
1999-00	0.027	2.901	2.929
2000-01	0.000	3.340	3.340
2001-02	0.017	2.843	2.861
2002-03	0.227	2.075	2.302
2003-04	0.935	4.790	5.725
2004-05	0.842	10.628	11.470
2005-06	0.203	3.597	3.800
2006-07	0.557	1.598	2.155

* Regional ecosystem remnant mapping prior to 1999 not used in this analysis.

Woody vegetation clearing by tenure

Table 2. Woody vegetation clearing rates in the Southern Gulf Natural Resource Management region by tenure.

Period	Woody vegetation clearing rate (,000ha/yr) on				
	Freehold	Leasehold	Reserves	Other tenures	Total
1988-91	1.954	4.325	0.006	0.014	6.299
1991-95	0.626	1.408	0.000	0.000	2.034
1995-97	3.257	2.025	0.000	0.000	5.282
1997-99	0.349	2.762	0.000	0.000	3.111
1999-00	1.616	1.313	0.000	0.000	2.929
2000-01	0.032	3.308	0.000	0.000	3.340
2001-02	1.193	1.667	0.000	0.000	2.861
2002-03	0.645	1.657	0.000	0.000	2.302
2003-04	0.669	5.006	0.000	0.000	5.675
2004-05	0.952	10.518	0.000	0.000	11.470
2005-06	2.380	1.420	0.001	0.000	3.800
2006-07	0.410	1.744	0.001	0.000	2.155

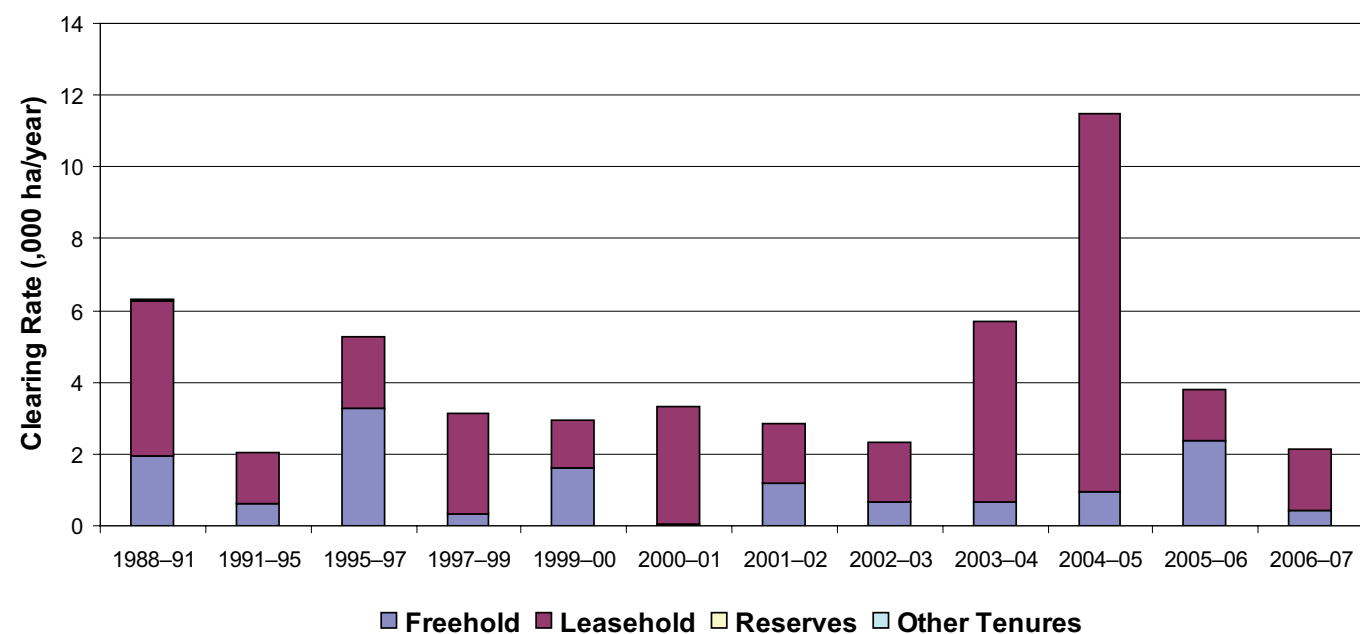


Figure 3. Woody vegetation clearing rates in the Southern Gulf Natural Resource Management region by tenure.

Woody vegetation clearing by subcatchment

Table 3. Woody vegetation clearing rates in the Southern Gulf Natural Resource Management region by subcatchment #.

Period	Woody vegetation clearing rate (,000ha/yr) for						
	Cliffdale Creek	Flinders River	Morning Inlet	Nicholson River	Leichhardt River	Saxby River	Total
2006-07	0.567	1.112	0.004	0.018	0.349	0.107	2.155

Please refer to Figure 26 of the main report (NRW, 2008) for the location of each subcatchment.

Remaining woody vegetation

Table 4. Remaining woody vegetation in the Southern Gulf Natural Resource Management region by subcatchment.

	Cliffdale Creek	Cloncurry River	Eight Mile Creek	Flinders River	L Creek	Lagoon Creek	Leichhardt River
Catchment area (,000 ha)	618	4734	163	5188	194	283	3288
Area woody 2006 V2.3 (,000 ha)	557	1328	151	2071	54	266	2104
% of catchment woody in 2006	90	28	92	40	28	94	64

Table 4. continued

	Misc other Islands	Morning Inlet	Mornington Island	Nicholson River	Saxby River	Settlement River	Total
Catchment area (,000 ha)	24	173	100	3564	1015	111	19456
Area woody 2006 V2.3 (,000 ha)	15	79	87	2099	551	100	9463
% of catchment woody in 2006	65	46	87	59	54	90	49

Note: Catchments with a low proportion of woody vegetation cover may contain significant areas of natural grasslands.

Woody vegetation clearing by replacement land cover

Table 5. Woody vegetation clearing rates in the Southern Gulf Natural Resource Management region by replacement land cover.

Period	Wood vegetation clearing rate (,000ha/yr) for						
	Pasture	Crop	Forestry	Mining	Infrastructure	Settlement	Total*
1988-91	5.445	0.000	0.000	0.001	0.862	0.000	6.308
1991-95	2.034	0.000	0.000	0.000	0.000	0.000	2.034
1995-97	5.082	0.000	0.000	0.041	0.232	0.000	5.356
1997-99	2.124	0.000	0.000	0.256	0.744	0.000	3.125
1999-00	2.346	0.001	0.000	0.208	0.373	0.000	2.929
2000-01	3.221	0.000	0.000	0.000	0.120	0.000	3.340
2001-02	2.063	0.000	0.000	0.000	0.797	0.000	2.861
2002-03	1.736	0.000	0.000	0.000	0.566	0.000	2.302
2003-04	5.378	0.000	0.000	0.050	0.292	0.005	5.725
2004-05	11.347	0.000	0.000	0.004	0.119	0.000	11.470
2005-06	3.690	0.000	0.000	0.053	0.057	0.000	3.800
2006-07	1.965	0.000	0.000	0.144	0.046	0.000	2.155

* total excludes natural tree death