



# Land cover change in the South West Natural Resource Management region

2006-07

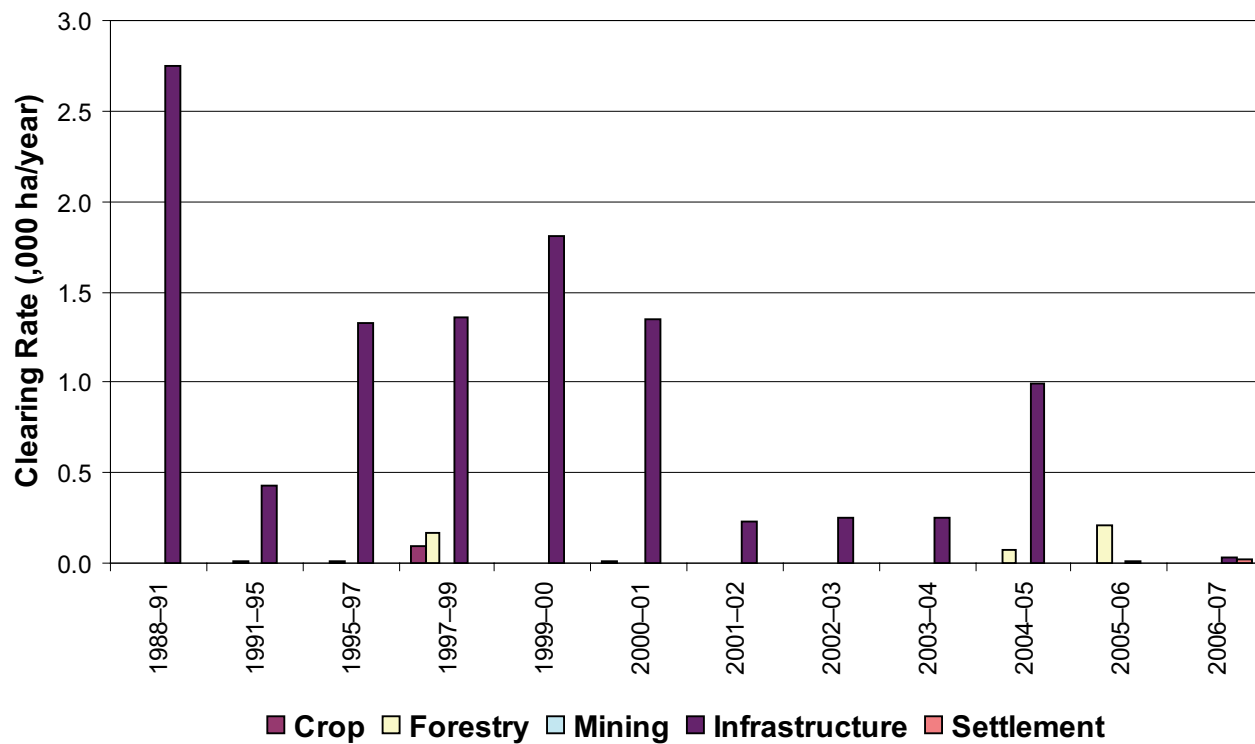
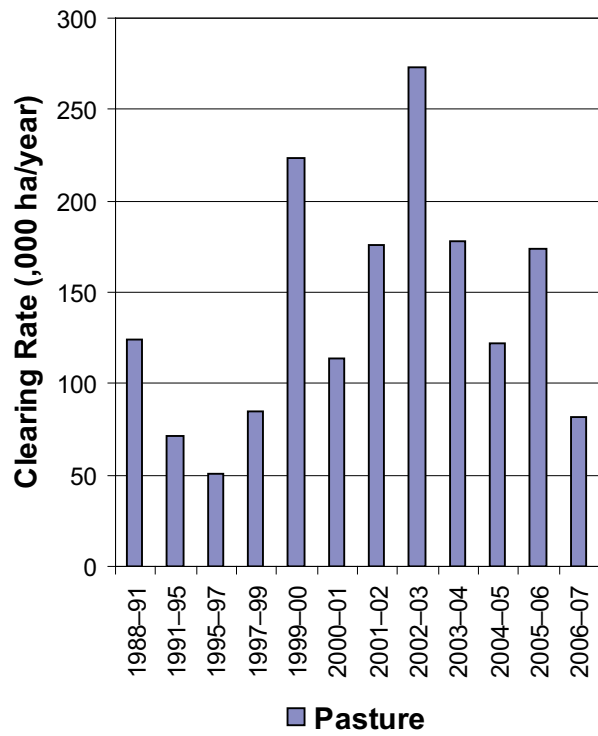


Figure 4. Woody vegetation clearing rates in the South West Natural Resource Management region by replacement land cover.

This fact sheet is 12 of 14 in a series detailing land cover change in Queensland's Natural Resource Management regions. These fact sheets are addenda to the report: Department of Natural Resources and Water (2008). *Land cover change in Queensland 2006-07: a Statewide Landcover and Trees Study (SLATS) Report*, Dec, 2008. Department of Natural Resources and Water, Brisbane.

Please refer to this report for further background, methods and explanatory notes.

The Queensland Government supports and encourages the dissemination and exchange of information. However, copyright protects this document. The State of Queensland has no objection to this material being reproduced, made available online or electronically, provided it is for your personal, non-commercial use, or use within your organisation; the material remains unaltered; and the State of Queensland is recognised as the owner.

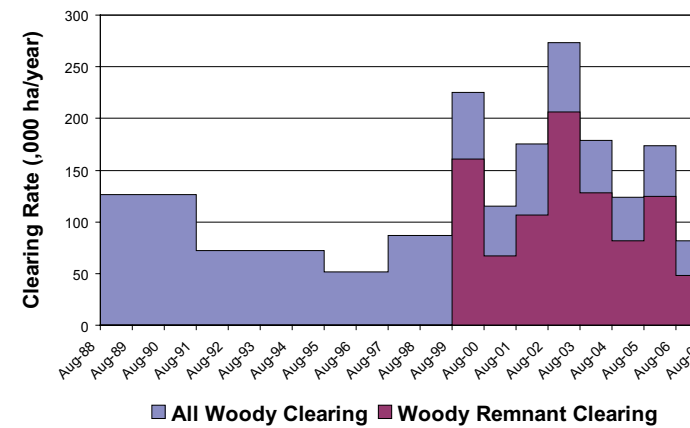
© The State of Queensland 2008.

For further information:  
Statewide Landcover and Trees Study  
80 Meiers Road  
Indooroopilly QLD 4068  
Phone: 61 7 3896 9605  
Email: nrscdatacoordinator@nrw.qld.gov.au

[www.nrw.qld.gov.au/slats](http://www.nrw.qld.gov.au/slats)



#28780



## Summary

The 2006-07 period saw a 62% decrease in remnant woody vegetation clearing within the South West region. The woody vegetation clearing rate of 81 948 hectares per year (ha/yr) is the lowest measured rate in the South West region, since 1995-97.

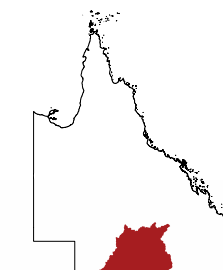


Figure 1. Woody vegetation clearing rates in the South West Natural Resource Management region.

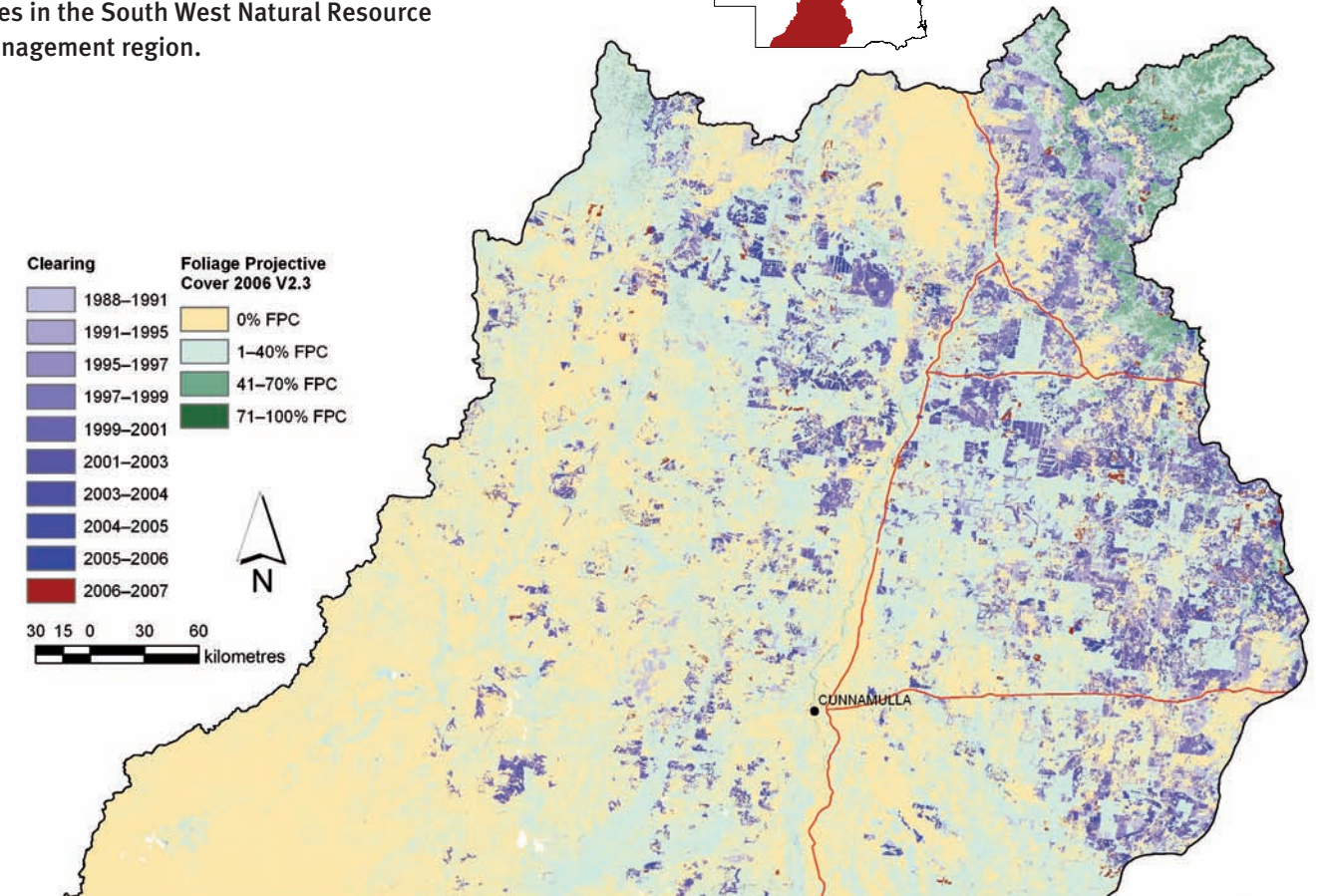


Figure 2. Woody vegetation clearing for each change period.

## Woody vegetation clearing by remnant status

Table 1. Remnant and non-remnant woody clearing rates in the South West Natural Resource Management region.

Period	Woody vegetation clearing rate (,000ha/yr) of		
	Non-remnant woody	Remnant woody*	Total woody
1999-00	64.370	160.985	225.355
2000-01	48.437	67.029	115.466
2001-02	68.954	106.747	175.702
2002-03	66.775	206.207	272.982
2003-04	50.715	127.893	178.608
2004-05	41.882	81.498	123.380
2005-06	49.266	124.452	173.718
2006-07	34.120	47.827	81.948

\* Regional ecosystem remnant mapping prior to 1999 not used in this analysis.

## Woody vegetation clearing by tenure

Table 2. Woody vegetation clearing rates in the South West Natural Resource Management region by tenure.

Period	Woody vegetation clearing rate (,000ha/yr) on				
	Freehold	Leasehold	Reserves	Other tenures	Total
1988-91	50.519	73.691	0.276	1.888	126.374
1991-95	27.428	43.821	0.128	0.790	72.166
1995-97	26.101	23.985	0.068	1.425	51.578
1997-99	41.337	43.989	0.281	1.296	86.902
1999-00	142.170	83.024	0.161	0.000	225.355
2000-01	60.054	55.399	0.012	0.000	115.465
2001-02	79.841	95.501	0.359	0.000	175.702
2002-03	146.555	126.391	0.018	0.000	272.963
2003-04	95.407	83.057	0.145	0.000	178.609
2004-05	58.102	65.192	0.086	0.000	123.380
2004-05	83.653	89.925	0.139	0.000	173.718
2006-07	37.013	44.884	0.051	0.000	81.948

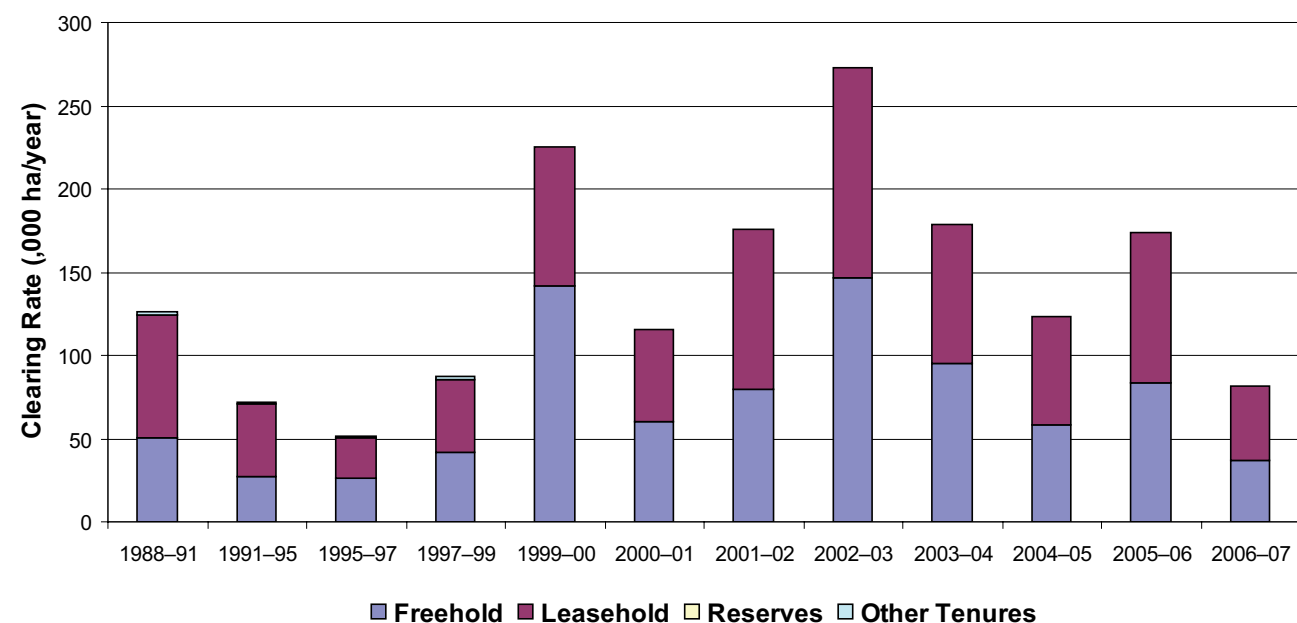


Figure 3. Woody vegetation clearing rates in the South West Natural Resource Management region by tenure.

## Woody vegetation clearing by subcatchment

Table 3. Woody vegetation clearing rates in the South West Natural Resource Management region by subcatchment #.

Period	Woody vegetation clearing rate (,000ha/yr) for				
	Bulloo River	Paroo River	Wallam Creeks	Warrego River	Total
2006-07	5.009	6.078	39.368	31.493	81.948

# Please refer to Figure 26 of the main report (NRW, 2008) for the location of each subcatchment.

## Remaining woody vegetation

Table 4. Remaining woody vegetation in the South West Natural Resource Management region by subcatchment.

	Bulloo River	Paroo River	Wallam Creeks	Warrego River	Total
Catchment area (,000 ha)	5185	3654	4704	5169	18711
Area woody 2006 V2.3 (,000 ha)	1609	1844	2716	3049	9218
% of catchment woody in 2006	31	50	58	59	49

## Woody vegetation clearing by replacement land cover

Table 5. Woody vegetation clearing rates in the South West Natural Resource Management region by replacement land cover.

Period	Woody vegetation clearing rate (,000ha/yr) for						
	Pasture	Crop	Forestry	Mining	Infrastructure	Settlement	Total*
1988-91	123.635	0.000	0.000	0.000	2.749	0.001	126.385
1991-95	71.740	0.000	0.015	0.001	0.432	0.000	72.188
1995-97	50.252	0.000	0.015	0.000	1.323	0.000	51.590
1997-99	85.278	0.095	0.165	0.000	1.362	0.003	86.904
1999-00	223.540	0.000	0.004	0.000	1.810	0.002	225.355
2000-01	114.103	0.011	0.000	0.000	1.352	0.000	115.466
2001-02	175.467	0.000	0.000	0.000	0.235	0.000	175.702
2002-03	272.735	0.000	0.000	0.000	0.247	0.000	272.982
2003-04	178.354	0.000	0.000	0.000	0.254	0.000	178.608
2004-05	122.309	0.000	0.074	0.000	0.997	0.001	123.380
2005-06	173.497	0.000	0.212	0.000	0.009	0.000	173.718
2006-07	81.891	0.000	0.000	0.000	0.034	0.022	81.948

\* total excludes natural tree death