



Land cover change in the South East Queensland Natural Resource Management region

2006-07

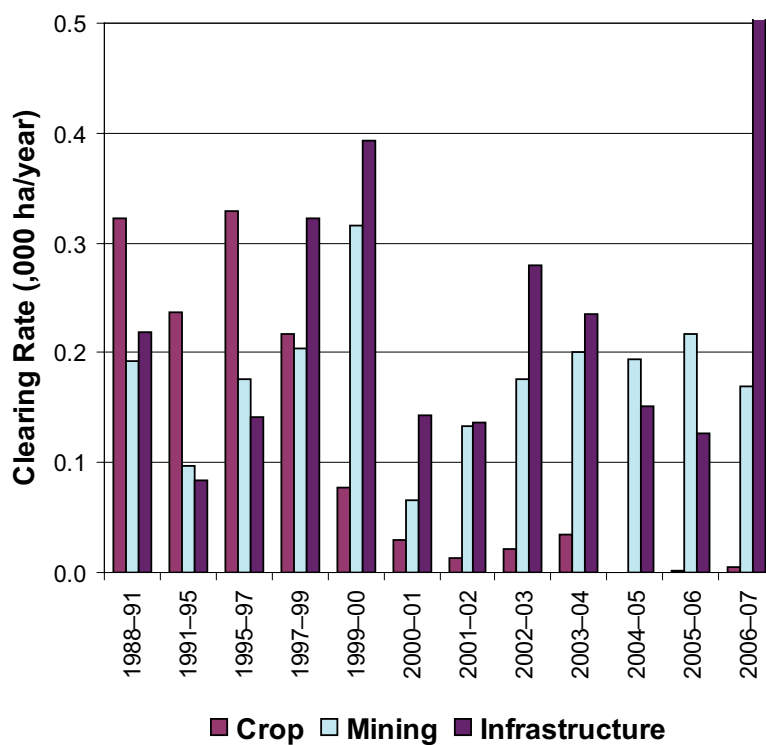
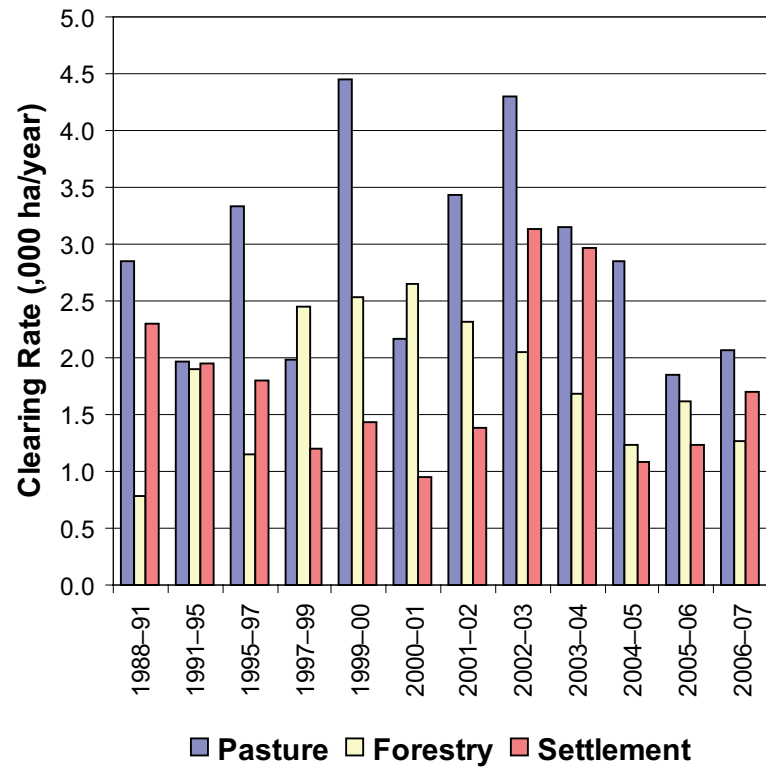


Figure 4. Woody vegetation clearing rates in the SEQ Natural Resource Management region by replacement land cover.

This fact sheet is 11 of 14 in a series detailing land cover change in Queensland's Natural Resource Management regions. These fact sheets are addenda to the report: Department of Natural Resources and Water (2008). *Land cover change in Queensland 2006-07: a Statewide Landcover and Trees Study (SLATS) Report*, Dec, 2008. Department of Natural Resources and Water, Brisbane.

Please refer to this report for further background, methods and explanatory notes.

The Queensland Government supports and encourages the dissemination and exchange of information. However, copyright protects this document. The State of Queensland has no objection to this material being reproduced, made available online or electronically, provided it is for your personal, non-commercial use, or use within your organisation; the material remains unaltered; and the State of Queensland is recognised as the owner.

© The State of Queensland 2008.

For further information:
Statewide Landcover and Trees Study
80 Meiers Road
Indooroopilly QLD 4068
Phone: 61 7 3896 9605
Email: nrscdatacoordinator@nrw.qld.gov.au

www.nrw.qld.gov.au/slats



#28780

Summary

The woody vegetation clearing rate for the SEQ region for 2006-07 was 5 751 hectares per year (ha/yr).

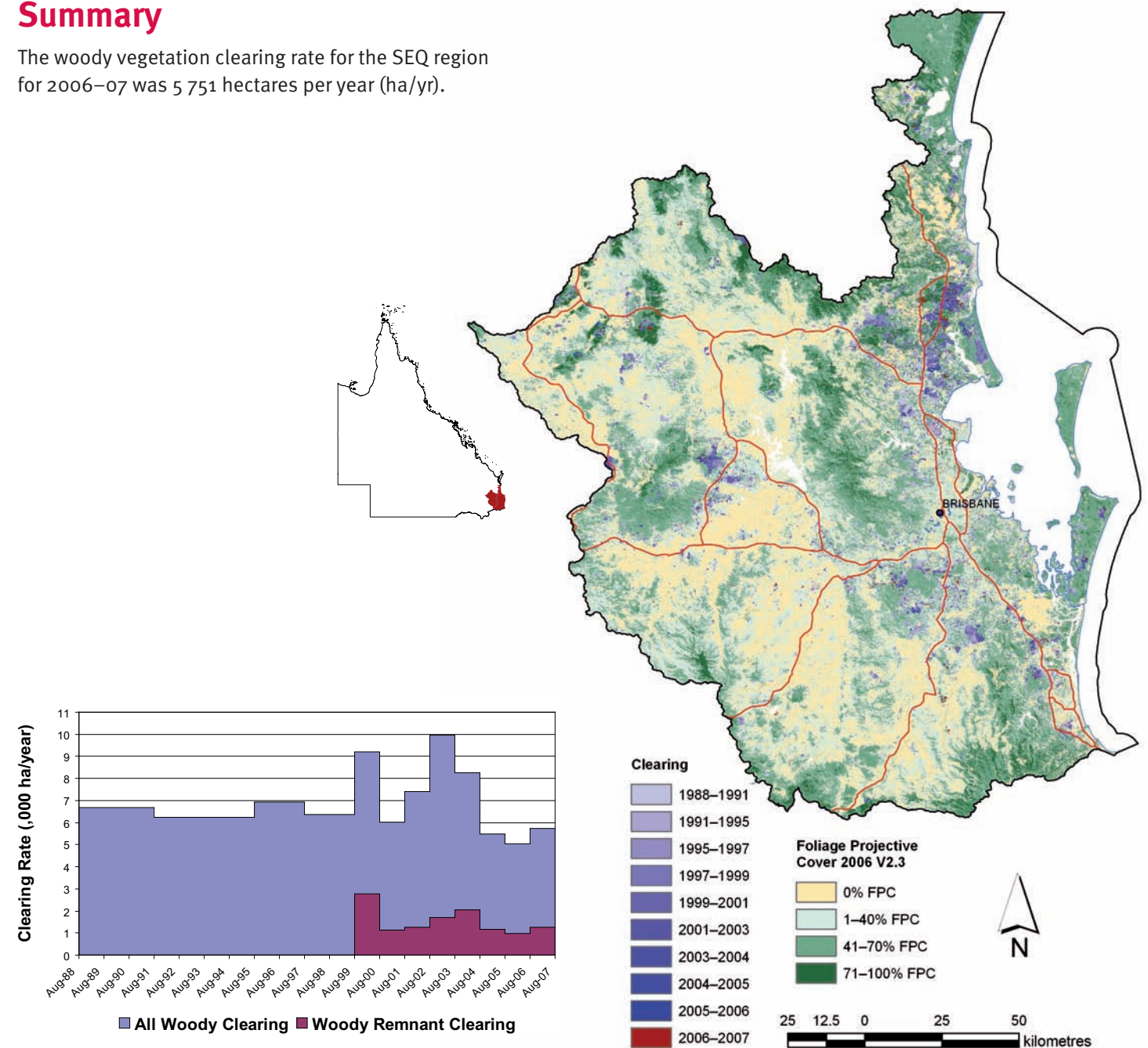


Figure 1. Woody vegetation clearing rates in the SEQ Natural Resource Management region.

Figure 2. Woody vegetation clearing for each change period.

Woody vegetation clearing by remnant status

Table 1. Remnant and non-remnant woody clearing rates in the SEQ Natural Resource Management region.

Period	Woody vegetation clearing rate (,00oha/yr) of		
	Non-remnant woody	Remnant woody*	Total woody
1999-00	6.433	2.767	9.201
2000-01	4.863	1.145	6.008
2001-02	6.150	1.262	7.411
2002-03	8.254	1.715	9.969
2003-04	6.203	2.063	8.265
2004-05	4.336	1.162	5.498
2005-06	4.078	0.970	5.048
2006-07	4.483	1.267	5.751

* Regional ecosystem remnant mapping prior to 1999 not used in this analysis.

Woody vegetation clearing by tenure

Table 2. Woody vegetation clearing rates in the SEQ Natural Resource Management region by tenure.

Period	Woody vegetation clearing rate (,00oha/yr) on				
	Freehold	Leasehold	Reserves	Other tenures	Total
1988-91	5.402	0.522	0.711	0.028	6.663
1991-95	4.192	0.456	1.540	0.019	6.207
1995-97	5.295	0.535	1.064	0.016	6.910
1997-99	4.408	0.856	1.079	0.019	6.361
1999-00	7.450	0.812	0.918	0.020	9.200
2000-01	5.091	0.395	0.495	0.026	6.007
2001-02	5.589	0.318	1.437	0.064	7.408
2002-03	8.128	0.445	1.315	0.081	9.969
2003-04	6.415	0.600	1.172	0.020	8.206
2004-05	4.059	0.585	0.844	0.010	5.498
2005-06	3.481	0.649	0.917	0.002	5.048
2006-07	4.282	0.446	1.020	0.002	5.751

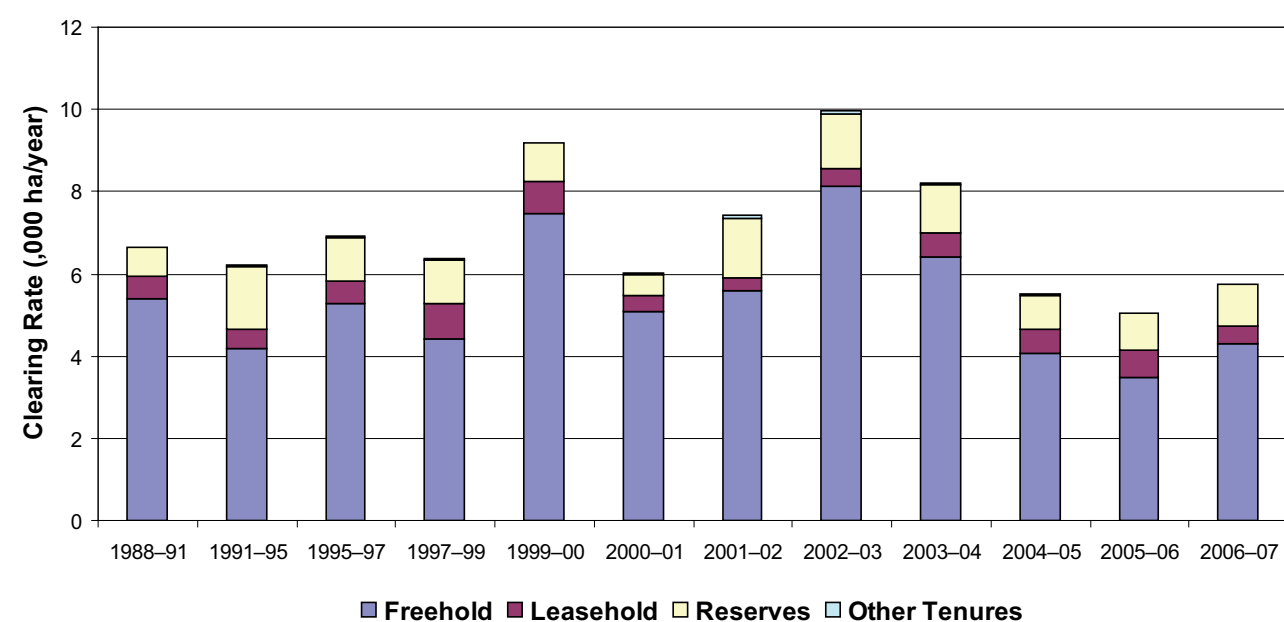


Figure 3. Woody vegetation clearing rates in the SEQ Natural Resource Management region by tenure.

Almost all the clearing on reserves is for forestry purposes.

Woody vegetation clearing by subcatchment

Table 3. Woody vegetation clearing rates in the SEQ Natural Resource Management region by subcatchment #.

Period	Woody vegetation clearing rate (,00oha/yr) for						
	Albert River	Bremer River	Brisbane River	Caboolture River	Coomera and Nerang Rivers	Lockyer Creek	Logan River
2006-07	0.344	0.358	1.248	0.199	0.487	0.456	0.729

Table 3. continued

Period	Woody vegetation clearing rate (,00oha/yr) for							
	Maroochy River	Moreton Island	Noosa River	North Pine River	South Pine River	Stanley River	Stradbroke Islands	Total
2006-07	1.392	0.001	0.129	0.131	0.080	0.105	0.093	5.751

Please refer to Figure 26 of the main report (NRW, 2008) for the location of each subcatchment.

Remaining woody vegetation

Table 4. Remaining woody vegetation in the SEQ Catchments Natural Resource Management region by subcatchment.

	Albert River	Bremer River	Brisbane River	Caboolture River	Coomera and Nerang Rivers	Lockyer River	Logan River
Catchment area (,000 ha)	78	203	697	47	130	301	336
Area woody 2006 V2.3 (,000 ha)	56	113	471	33	98	195	227
% of catchment woody in 2006	71	56	68	71	75	65	67

Table 4. continued

	Maroochy River	Moreton Island	Noosa River	North Pine River	South Pine River	Stanley River	Stradbroke Island	Total
Catchment area (,000 ha)	154	17	96	60	42	154	29	2344
Area woody 2006 V2.3 (,000 ha)	113	16	82	46	33	111	26	1618
% of catchment woody in 2006	73	92	85	76	79	72	90	69

Woody vegetation clearing by replacement land cover

Table 5. Woody vegetation clearing rates in the SEQ Natural Resource Management region by replacement land cover.

Period	Woody vegetation clearing rate (,00oha/yr) for						
	Pasture	Crop	Forestry	Mining	Infrastructure	Settlement	Total*
1988-91	2.858	0.322	0.786	0.192	0.219	2.295	6.673
1991-95	1.970	0.237	1.894	0.097	0.083	1.946	6.228
1995-97	3.330	0.330	1.143	0.175	0.142	1.800	6.920
1997-99	1.980	0.216	2.447	0.204	0.322	1.203	6.373
1999-00	4.455	0.078	2.525	0.316	0.393	1.433	9.201
2000-01	2.164	0.030	2.653	0.066	0.143	0.952	6.008
2001-02	3.426	0.012	2.319	0.134	0.137	1.383	7.411
2002-03	4.296	0.021	2.050	0.176	0.280	3.138	9.960
2003-04	3.145	0.034	1.685	0.201	0.235	2.965	8.265
2004-05	2.849	0.000	1.228	0.194	0.151	1.076	5.498
2005-06	1.852	0.002	1.625	0.216	0.126	1.227	5.048
2006-07	2.065	0.005	1.260	0.169	0.543	1.708	5.751

* total excludes natural tree death