



Land cover change in the Northern Gulf Natural Resource Management region

2006-07

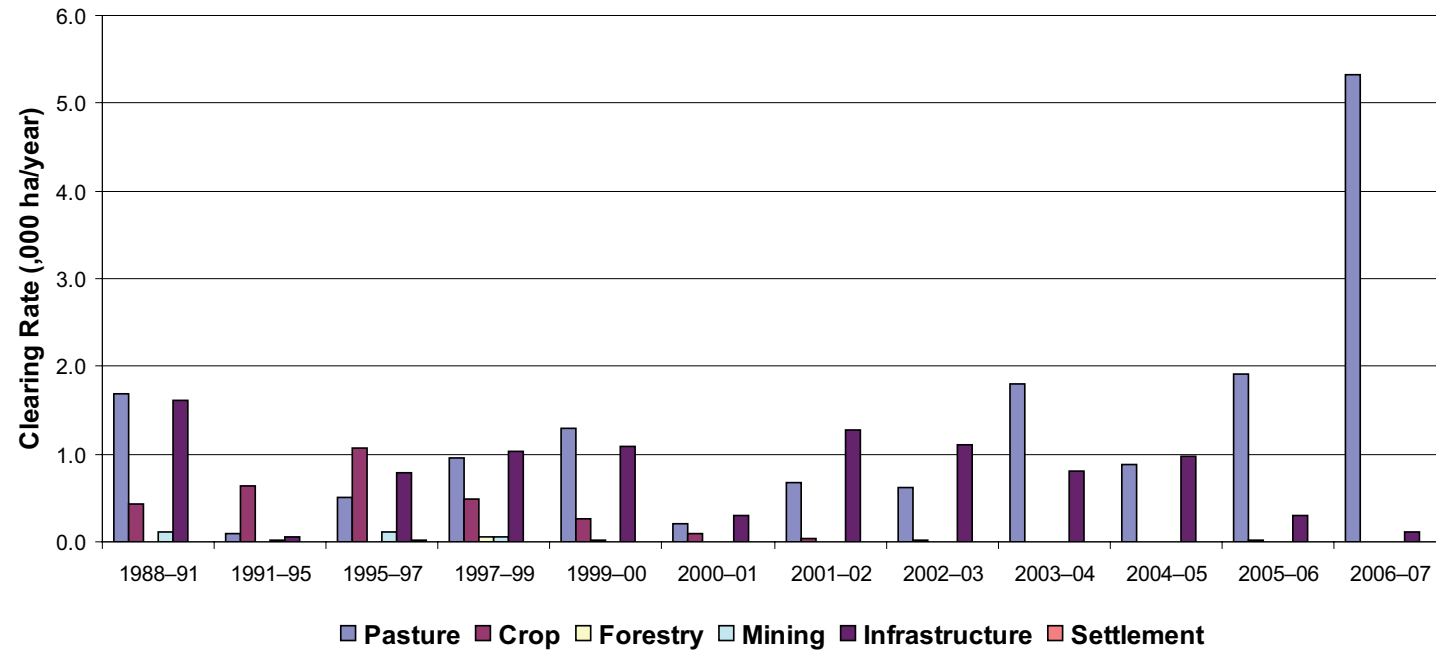


Figure 4. Woody vegetation clearing rates in the Northern Gulf Natural Resource Management Region by replacement land cover.

Summary

The 2006-07 period saw a marked increase in remnant woody vegetation clearing within the Northern Gulf region. The replacement landcover class of pasture increased to the highest measured rate since satellite monitoring began.

The woody vegetation clearing rate for 2006-07 was 5 428 hectares per year (ha/yr).

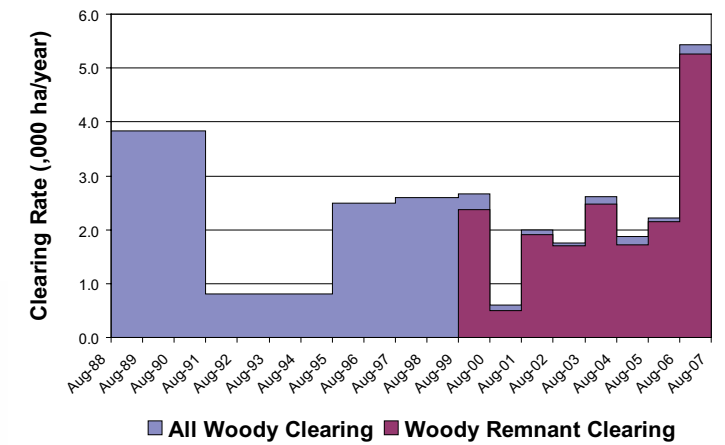


Figure 1. Woody vegetation clearing rates in the Northern Gulf Natural Resource Management region.

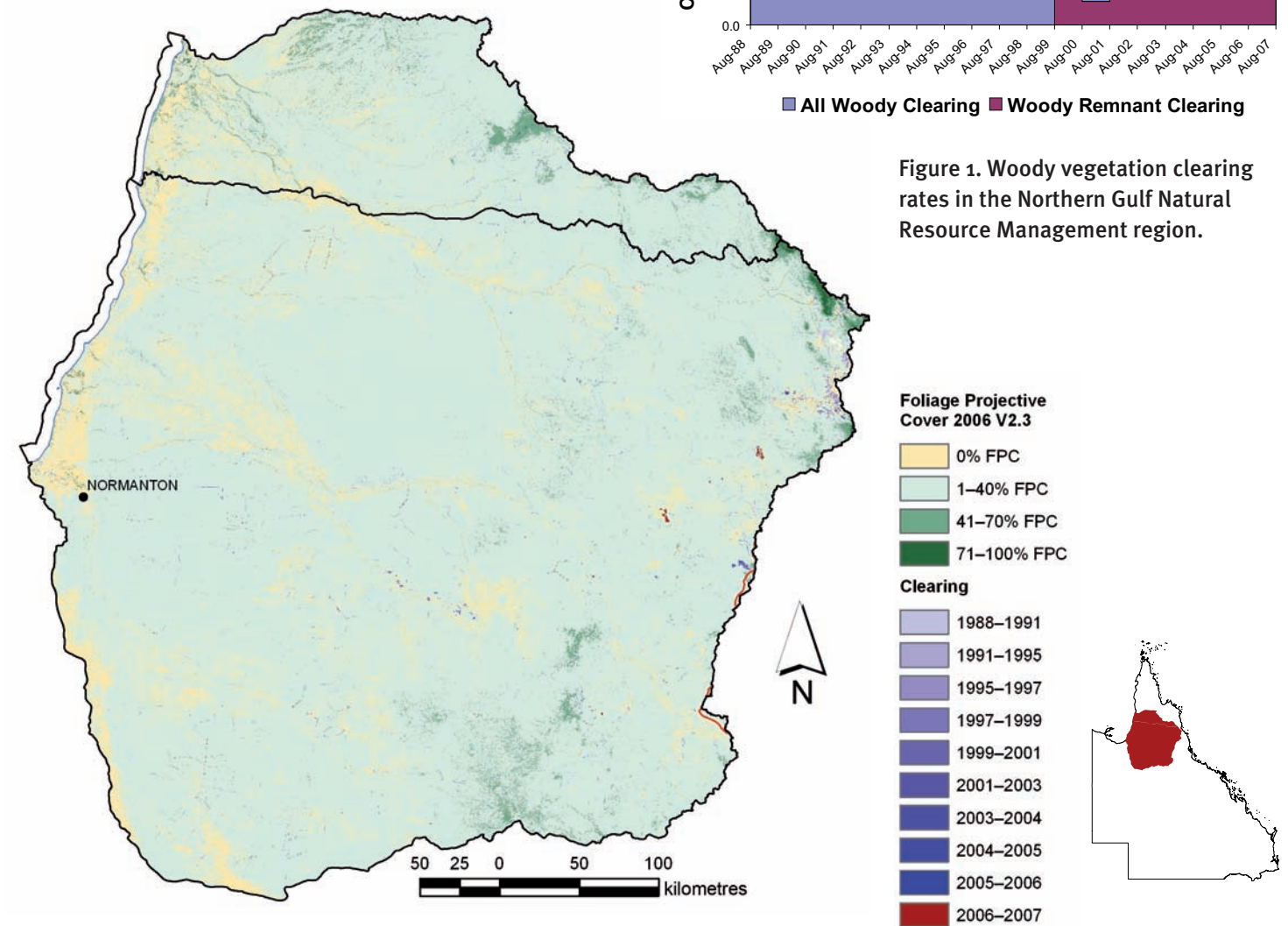


Figure 2. Woody vegetation clearing for each change period.

Note that the Northern Gulf Natural Resource Management region overlaps the Cape York Natural Resource Management region.

This fact sheet is 10 of 14 in a series detailing land cover change in Queensland's Natural Resource Management regions. These fact sheets are addenda to the report: Department of Natural Resources and Water (2008). *Land cover change in Queensland 2006-07: a Statewide Landcover and Trees Study (SLATS) Report*, Dec, 2008. Department of Natural Resources and Water, Brisbane.

Please refer to this report for further background, methods and explanatory notes.

The Queensland Government supports and encourages the dissemination and exchange of information. However, copyright protects this document. The State of Queensland has no objection to this material being reproduced, made available online or electronically, provided it is for your personal, non-commercial use, or use within your organisation; the material remains unaltered; and the State of Queensland is recognised as the owner.

© The State of Queensland 2008.

For further information:
Statewide Landcover and Trees Study
80 Meiers Road
Indooroopilly QLD 4068
Phone: 61 7 3896 9605
Email: nrsdatacoordinator@nrw.qld.gov.au

www.nrw.qld.gov.au/slats



#28780

Woody vegetation clearing by remnant status

Table 1. Remnant and non-remnant woody clearing rates in the Northern Gulf Natural Resource Management region.

Period	Woody vegetation clearing rate (,000ha/yr) of		
	Non-remnant woody	Remnant woody*	Total woody
1999-00	0.298	2.370	2.668
2000-01	0.094	0.501	0.595
2001-02	0.089	1.910	1.998
2002-03	0.051	1.702	1.753
2003-04	0.142	2.473	2.615
2004-05	0.161	1.717	1.878
2005-06	0.085	2.140	2.226
2006-07	0.167	5.261	5.428

* Regional ecosystem remnant mapping prior to 1999 not used in this analysis.

Woody vegetation clearing by tenure

Table 2. Woody vegetation clearing rates in the Northern Gulf Natural Resource Management region by tenure.

Period	Woody vegetation clearing rate (,000ha/yr) on				
	Freehold	Leasehold	Reserves	Other tenures	Total
1988-91	1.651	2.138	0.016	0.036	3.841
1991-95	0.514	0.260	0.008	0.028	0.810
1995-97	0.927	1.492	0.042	0.025	2.487
1997-99	0.807	1.739	0.033	0.018	2.596
1999-00	1.012	1.612	0.022	0.022	2.668
2000-01	0.202	0.371	0.017	0.006	0.595
2001-02	0.138	1.854	0.002	0.004	1.998
2002-03	0.129	1.622	0.000	0.002	1.753
2003-04	0.235	2.365	0.015	0.000	2.615
2004-05	0.042	1.835	0.001	0.000	1.878
2005-06	0.386	1.833	0.007	0.000	2.226
2006-07	0.201	5.221	0.003	0.004	5.428

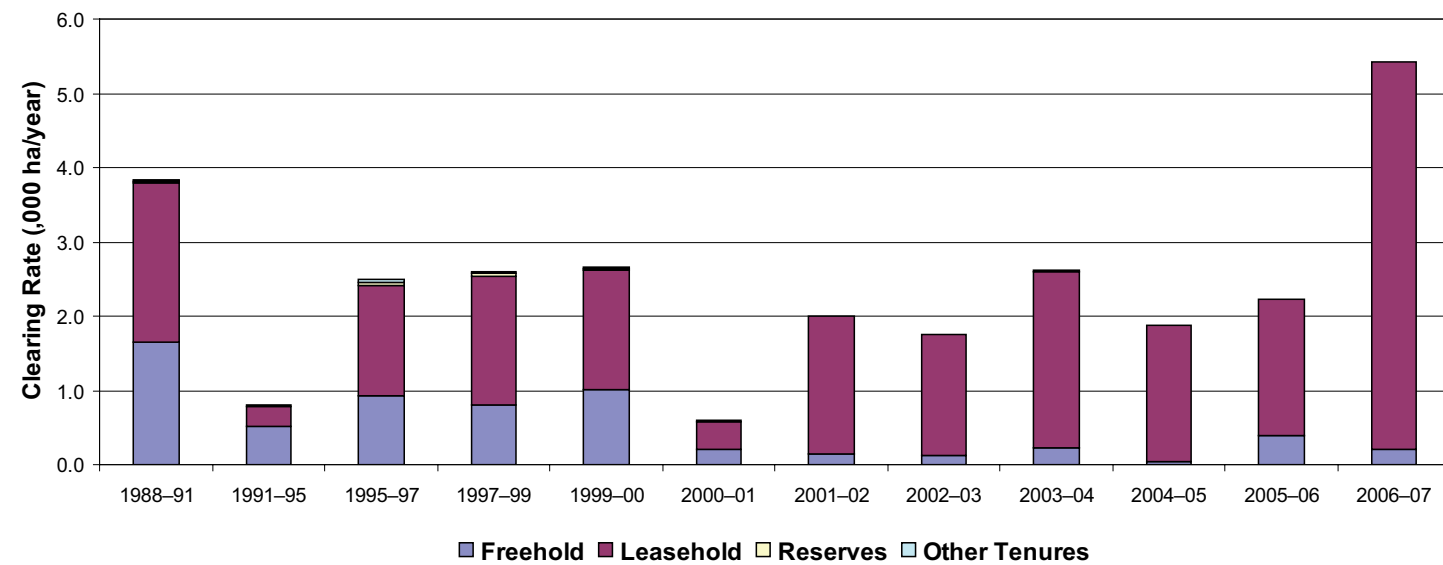


Figure 3. Woody vegetation clearing rates in the Northern Gulf Natural Resource Management region by tenure.

Woody vegetation clearing by subcatchment

Table 3. Woody vegetation clearing rates in the Northern Gulf Natural Resource Management region by subcatchment #.

Period	Woody vegetation clearing rate (,000ha/yr) for								
	Alice River	Einasteigh River	Gilbert River	Mitchell River	Norman River	Palmer River	Staaten River	Walsh River	Total
2006-07	0.056	0.648	0.345	2.129	1.315	0.032	0.642	0.263	5.428

Please refer to Figure 26 of the main report (NRW, 2008) for the location of each subcatchment.

Remaining woody vegetation

Table 4. Remaining woody vegetation in the Northern Gulf Natural Resource Management region by subcatchment.

	Alice River	Einasteigh River	Gilbert River	Mitchell River	Norman River	Palmer River	Staaten River	Walsh River	Total
Catchment area (,000 ha)	1294	2437	2203	4143	5042	832	2557	896	19404
Area woody 2006 V2.3 (,000 ha)	1186	2235	1880	3563	4407	807	2358	810	17246
% of catchment woody in 2006	92	92	85	86	87	97	92	90	89

Woody vegetation clearing by replacement land cover

Table 5. Woody vegetation clearing rates in the Northern Gulf Natural Resource Management region by replacement land cover.

Period	Woody vegetation clearing rate (,000ha/yr) for						
	Pasture	Crop	Forestry	Mining	Infrastructure	Settlement	Total*
1988-91	1.696	0.432	0.000	0.104	1.608	0.000	3.841
1991-95	0.100	0.633	0.000	0.021	0.058	0.000	0.812
1995-97	0.501	1.065	0.000	0.119	0.787	0.015	2.488
1997-99	0.957	0.495	0.055	0.051	1.041	0.000	2.599
1999-00	1.302	0.264	0.013	0.008	1.081	0.000	2.668
2000-01	0.198	0.089	0.000	0.003	0.305	0.000	0.595
2001-02	0.680	0.046	0.000	0.005	1.268	0.000	1.998
2002-03	0.628	0.013	0.000	0.001	1.111	0.000	1.753
2003-04	1.808	0.000	0.000	0.000	0.807	0.000	2.615
2004-05	0.890	0.005	0.000	0.002	0.981	0.000	1.878
2005-06	1.906	0.013	0.001	0.006	0.300	0.000	2.226
2006-07	5.316	0.000	0.000	0.002	0.110	0.000	5.428

* total excludes natural tree death