



Land cover change in the Maranoa-Balonne Natural Resource Management region

2006-07

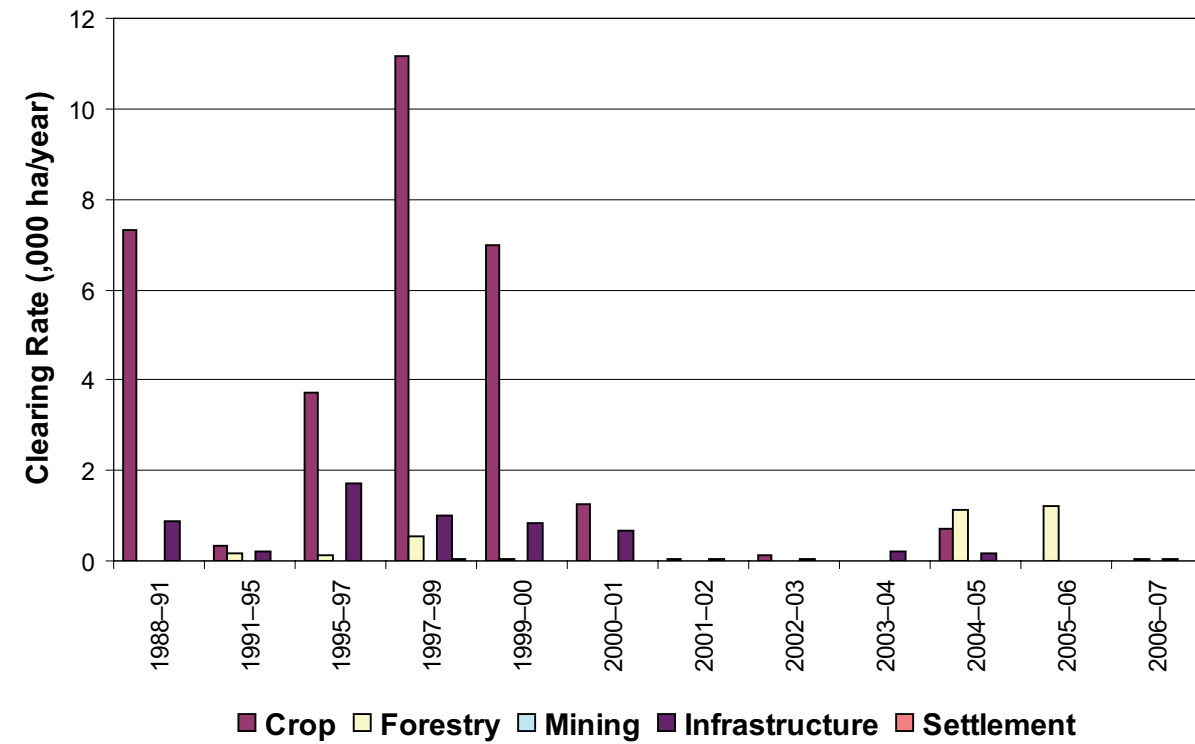
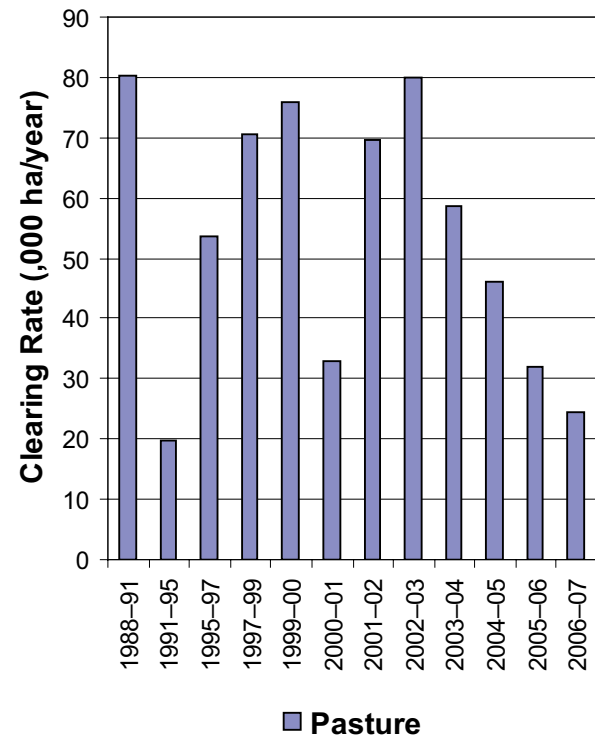


Figure 4. Woody vegetation clearing rates in the Maranoa-Balonne Natural Resource Management region by replacement land cover.

This fact sheet is 9 of 14 in a series detailing land cover change in Queensland's Natural Resource Management regions. These fact sheets are addenda to the report: Department of Natural Resources and Water (2008). *Land cover change in Queensland 2006-07: a Statewide Landcover and Trees Study (SLATS) Report*, Dec, 2008. Department of Natural Resources and Water, Brisbane.

Please refer to this report for further background, methods and explanatory notes.

The Queensland Government supports and encourages the dissemination and exchange of information. However, copyright protects this document. The State of Queensland has no objection to this material being reproduced, made available online or electronically, provided it is for your personal, non-commercial use, or use within your organisation; the material remains unaltered; and the State of Queensland is recognised as the owner.

© The State of Queensland 2008.

For further information:
Statewide Landcover and Trees Study
80 Meiers Road
Indooroopilly QLD 4068
Phone: 61 7 3896 9605
Email: nrsdatacoordinator@nrw.qld.gov.au

www.nrw.qld.gov.au/slats



#28780

Summary

The 2006-07 period saw a 27% decrease in woody vegetation clearing within the Maranoa-Balonne region. The replacement landcover class of pasture has shown a continued decline in woody vegetation clearing since its peak in the 2002-03 period.

The woody vegetation clearing rate of 24 406 hectares per year (ha/yr) is the lowest measured rate in the Maranoa-Balonne region, since satellite monitoring began.

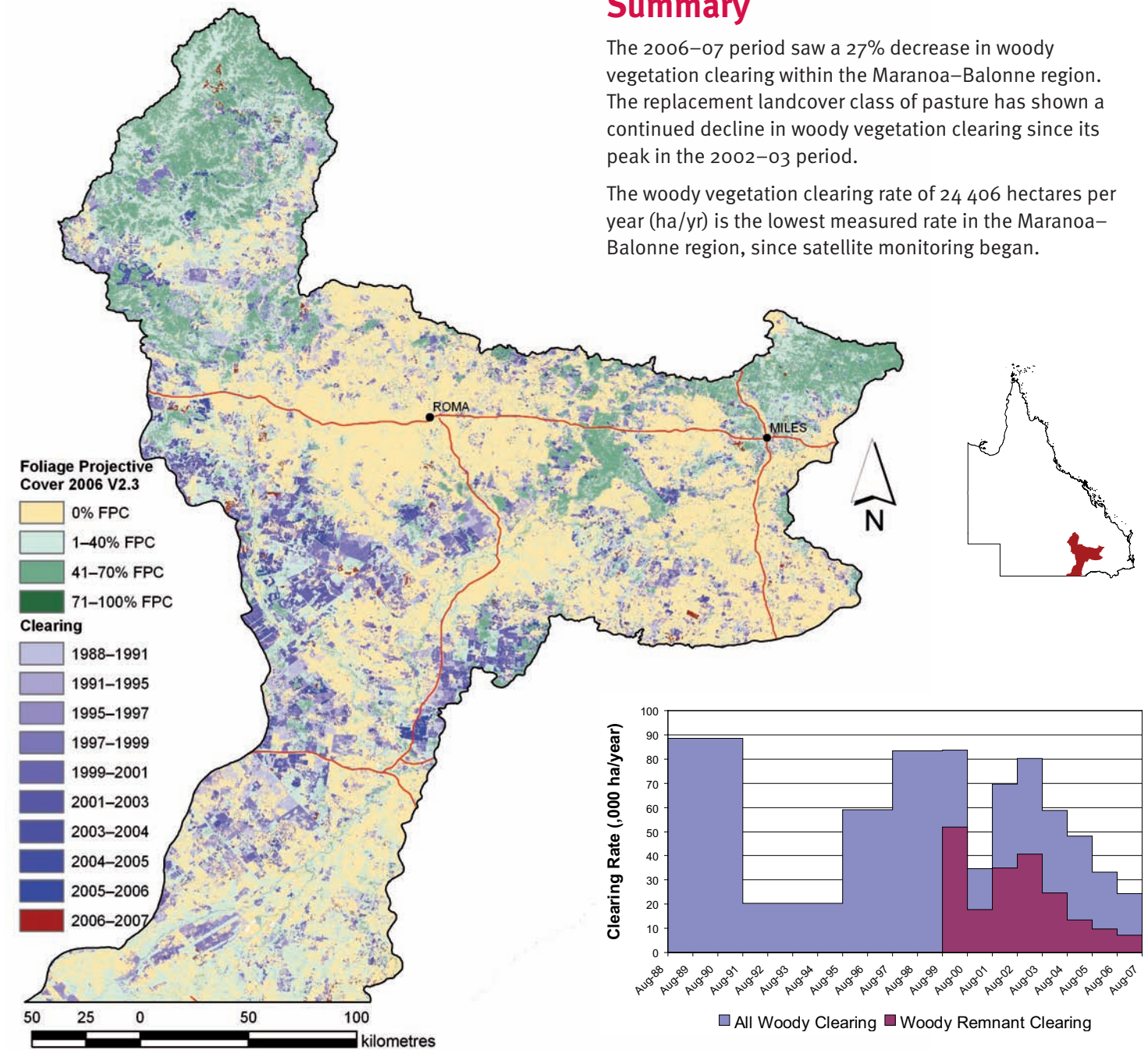


Figure 1. Woody vegetation clearing for each change period.

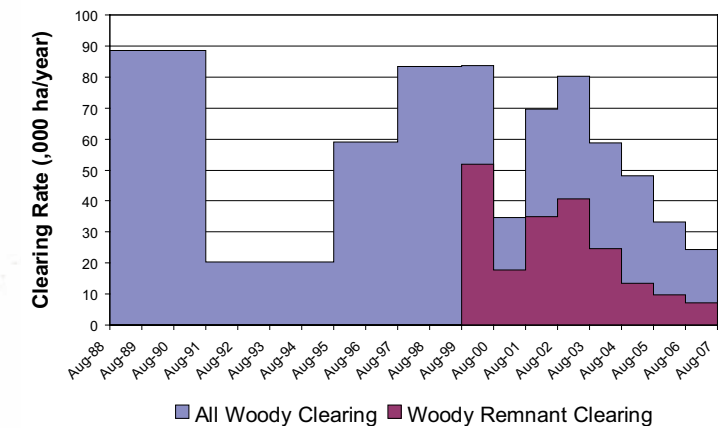


Figure 2. Woody vegetation clearing rates in the Maranoa-Balonne Natural Resource Management region.

Woody vegetation clearing by remnant status

Table 1. Remnant and non-remnant woody vegetation clearing rates in the Maranoa-Balonne Natural Resource Management region.

Period	Woody vegetation clearing rate (,000ha/yr) of		
	Non-remnant woody	Remnant woody*	Total woody
1999-00	31.831	51.849	83.681
2000-01	16.862	17.875	34.736
2001-02	34.536	35.033	69.570
2002-03	39.377	40.791	80.168
2003-04	34.131	24.671	58.802
2004-05	34.755	13.413	48.167
2005-06	23.599	9.632	33.231
2006-07	17.346	7.060	24.406

* Regional ecosystem remnant mapping prior to 1999 not used in this analysis.

Woody vegetation clearing by tenure

Table 2. Woody vegetation clearing rates in the Maranoa-Balonne Natural Resource Management region by tenure.

Period	Woody vegetation clearing rate (,000ha/yr) on				
	Freehold	Leasehold	Reserves	Other tenures	Total
1988-91	58.738	29.278	0.616	0.006	88.638
1991-95	12.414	7.884	0.182	0.004	20.484
1995-97	45.991	12.939	0.148	0.006	59.084
1997-99	62.590	20.103	0.652	0.035	83.381
1999-00	68.663	14.914	0.088	0.016	83.681
2000-01	23.754	10.847	0.135	0.000	34.736
2001-02	52.716	16.721	0.131	0.001	69.569
2002-03	67.064	12.727	0.376	0.000	80.167
2003-04	37.208	21.012	0.582	0.000	58.802
2004-05	36.614	10.403	1.149	0.000	48.167
2005-06	24.327	8.728	0.176	0.000	33.231
2006-07	16.309	7.916	0.181	0.000	24.406

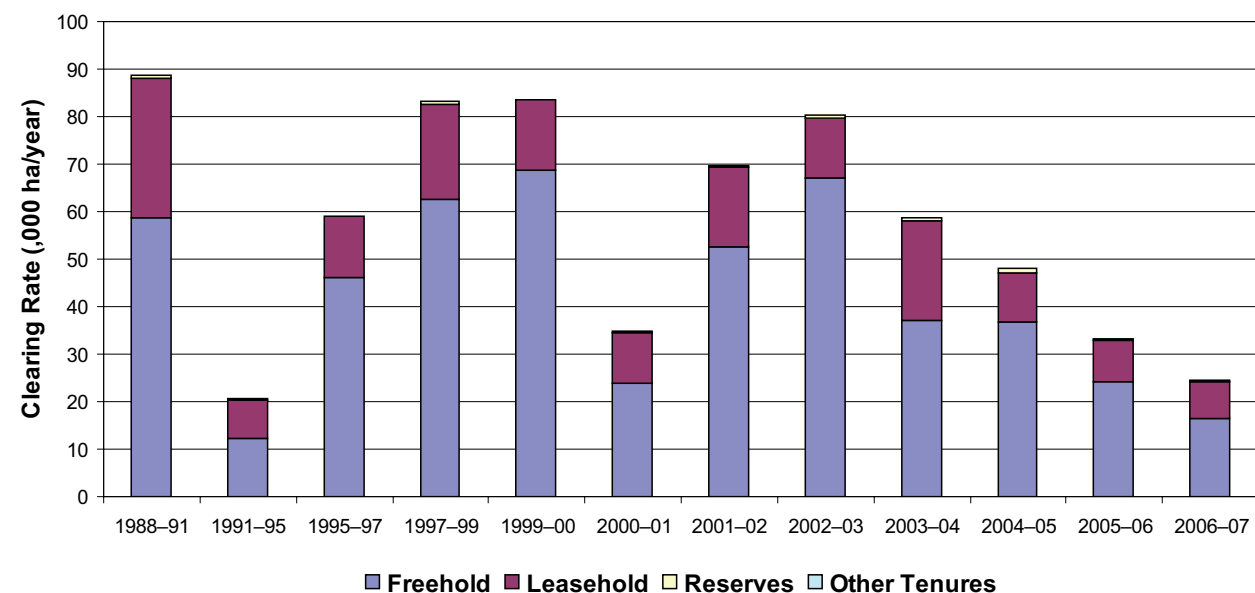


Figure 3. Woody vegetation clearing rates in the Maranoa-Balonne Natural Resource Management region by tenure.

Woody vegetation clearing by subcatchment

Table 3. Woody vegetation clearing rates in the Maranoa-Balonne Natural Resource Management region by subcatchment #.

Period	Woody vegetation clearing rate (,000ha/yr) for			
	Balonne River	Condamine River	Maranoa River	Total
2006-07	9.177	2.244	12.985	24.406

Please refer to Figure 26 of the main report (NRW, 2008) for the location of each subcatchment.

Remaining woody vegetation

Table 4. Remaining woody vegetation in the Maranoa-Balonne Natural Resource Management region by subcatchment.

	Balonne River	Condamine River	Maranoa River	Total
Catchment area (,000 ha)	3826	598	2004	6428
Area woody 2006 V2.3 (,000 ha)	1519	126	1365	3010
% of catchment woody in 2006	40	21	68	47

Woody vegetation clearing by replacement land cover

Table 5. Woody vegetation clearing rates in the Maranoa-Balonne Natural Resource Management region by replacement land cover.

Period	Woody vegetation clearing rate (,000ha/yr) for						
	Pasture	Crop	Forestry	Mining	Infrastructure	Settlement	Total*
1988-91	80.434	7.322	0.000	0.001	0.895	0.001	88.654
1991-95	19.771	0.319	0.175	0.000	0.219	0.000	20.484
1995-97	53.557	3.721	0.105	0.000	1.708	0.000	59.091
1997-99	70.654	11.178	0.527	0.000	1.017	0.022	83.398
1999-00	75.788	7.000	0.057	0.000	0.836	0.000	83.681
2000-01	32.784	1.254	0.014	0.000	0.685	0.000	34.736
2001-02	69.491	0.049	0.000	0.000	0.030	0.000	69.570
2002-03	80.014	0.125	0.000	0.000	0.029	0.000	80.168
2003-04	58.561	0.014	0.000	0.000	0.221	0.006	58.802
2004-05	46.155	0.721	1.142	0.000	0.147	0.001	48.167
2005-06	31.996	0.000	1.224	0.000	0.011	0.000	33.231
2006-07	24.324	0.004	0.042	0.006	0.029	0.000	24.406

* total excludes natural tree death