



## Land cover change in the Mackay-Whitsunday Natural Resource Management region

2006-07

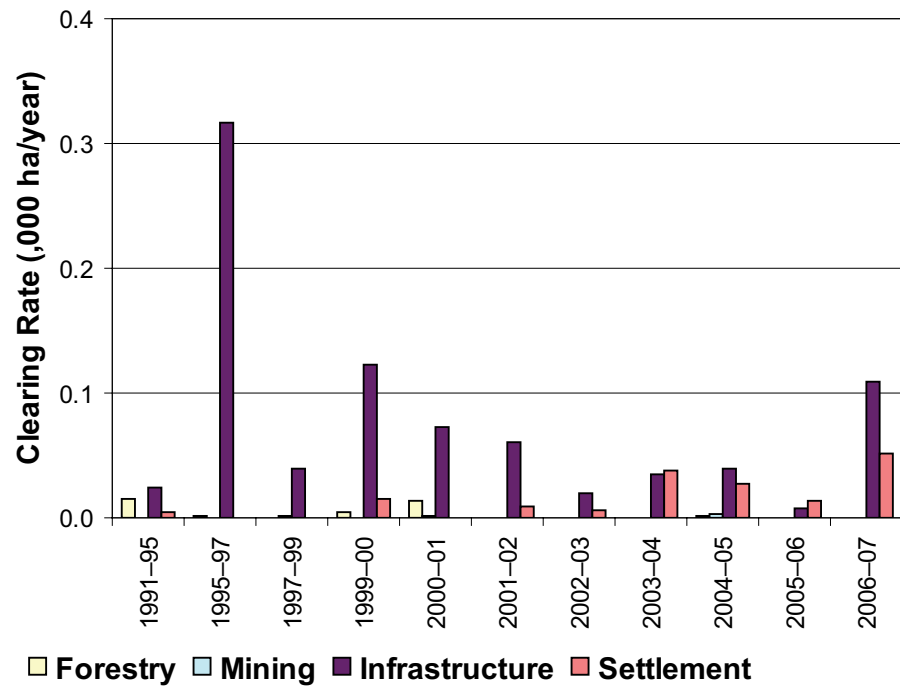
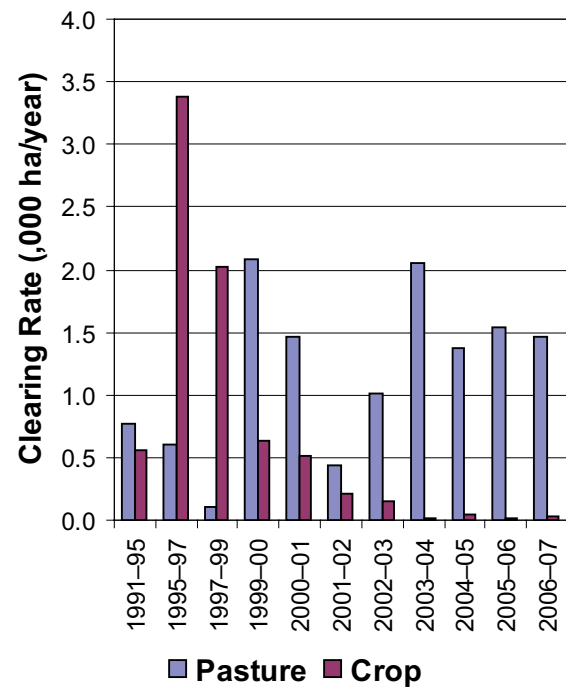


Figure 4. Woody vegetation clearing rates in the Mackay-Whitsunday Natural Resource Management region by replacement land cover.

This fact sheet is 8 of 14 in a series detailing land cover change in Queensland's Natural Resource Management regions. These fact sheets are addenda to the report: Department of Natural Resources and Water (2008). *Land cover change in Queensland 2006-07: a Statewide Landcover and Trees Study (SLATS) Report*, Dec, 2008. Department of Natural Resources and Water, Brisbane.

Please refer to this report for further background, methods and explanatory notes. The Queensland Government supports and encourages the dissemination and exchange of information. However, copyright protects this document. The State of Queensland has no objection to this material being reproduced, made available online or electronically, provided it is for your personal, non-commercial use, or use within your organisation; the material remains unaltered; and the State of Queensland is recognised as the owner.

© The State of Queensland 2008.

For further information:  
Statewide Landcover and Trees Study  
80 Meiers Road  
Indooroopilly QLD 4068  
Phone: 61 7 3896 9605  
Email: nrscdatacoordinator@nrw.qld.gov.au

[www.nrw.qld.gov.au/slats](http://www.nrw.qld.gov.au/slats)



#28780

### Summary

The woody vegetation clearing rate for the Mackay-Whitsunday region for 2006-07 was 1 654 hectares per year (ha/yr).

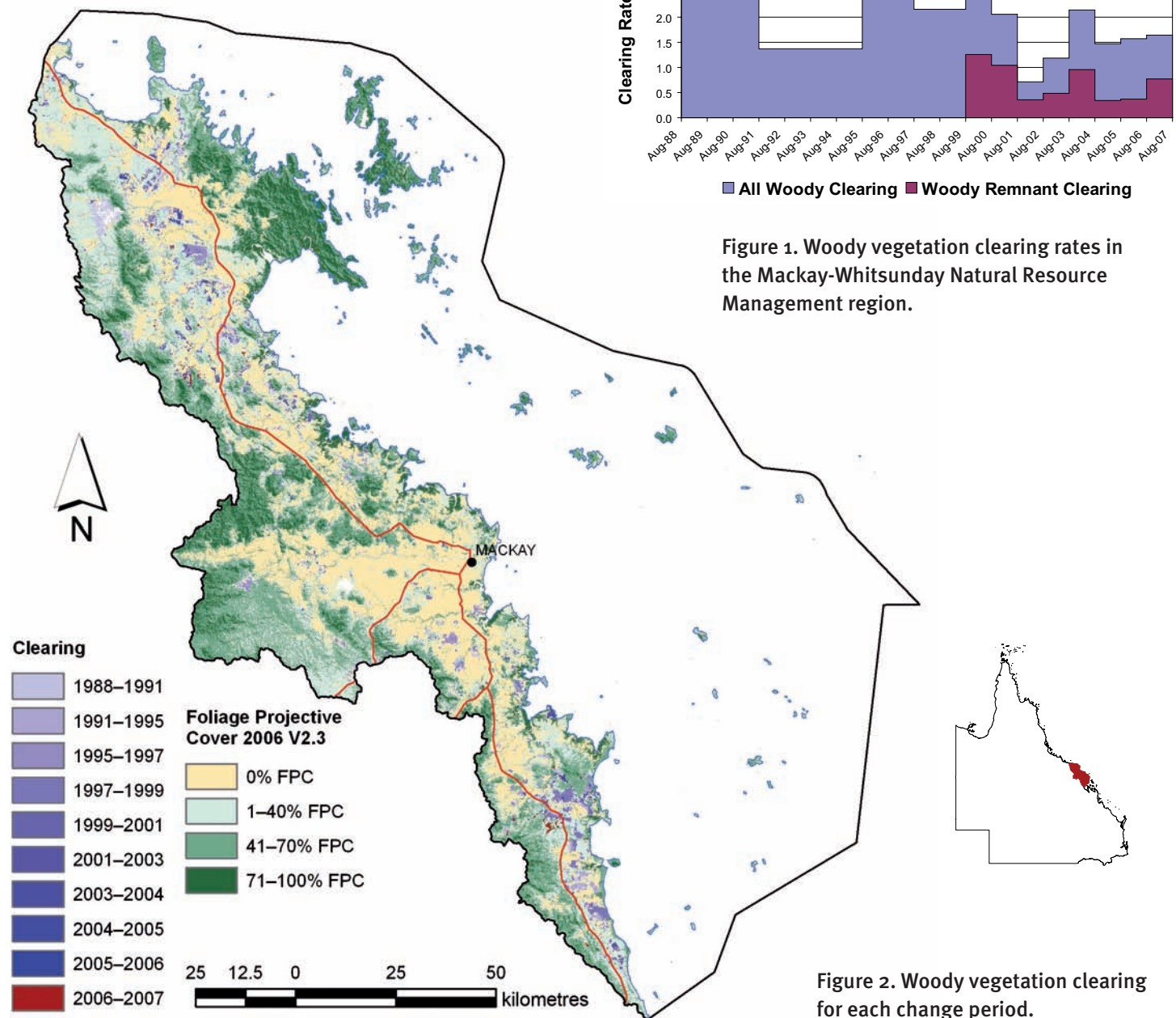


Figure 1. Woody vegetation clearing rates in the Mackay-Whitsunday Natural Resource Management region.

Figure 2. Woody vegetation clearing for each change period.

## Woody vegetation clearing by remnant status

Table 1. Remnant and non-remnant woody vegetation clearing rates in the Mackay-Whitsunday Natural Resource Management region.

Period	Woody vegetation clearing rate (,000ha/yr) of		
	Non-remnant woody	Remnant woody*	Total woody
1999-00	1.612	1.256	2.868
2000-01	1.015	1.052	2.067
2001-02	0.351	0.360	0.712
2002-03	0.692	0.493	1.185
2003-04	1.195	0.955	2.150
2004-05	1.136	0.339	1.475
2005-06	1.199	0.371	1.570
2006-07	0.886	0.769	1.654

\* Regional Ecosystem remnant mapping prior to 1999 not used in this analysis.

## Woody vegetation clearing by tenure

Table 2. Woody vegetation clearing rates in the Mackay-Whitsunday Natural Resource Management region by tenure.

Period	Woody vegetation clearing rate (,000ha/yr) on				
	Freehold	Leasehold	Reserves	Other tenures	Total
1988-91	2.755	0.497	0.013	0.689	3.954
1991-95	1.051	0.228	0.018	0.008	1.304
1995-97	4.054	0.233	0.007	0.001	4.294
1997-99	1.976	0.161	0.002	0.006	2.144
1999-00	2.688	0.169	0.011	0.000	2.868
2000-01	1.811	0.236	0.019	0.000	2.067
2001-02	0.667	0.044	0.000	0.000	0.712
2002-03	0.913	0.268	0.000	0.003	1.185
2003-04	2.000	0.142	0.007	0.000	2.150
2004-05	1.417	0.053	0.005	0.000	1.475
2005-06	1.515	0.055	0.000	0.000	1.570
2006-07	1.211	0.428	0.016	0.000	1.654

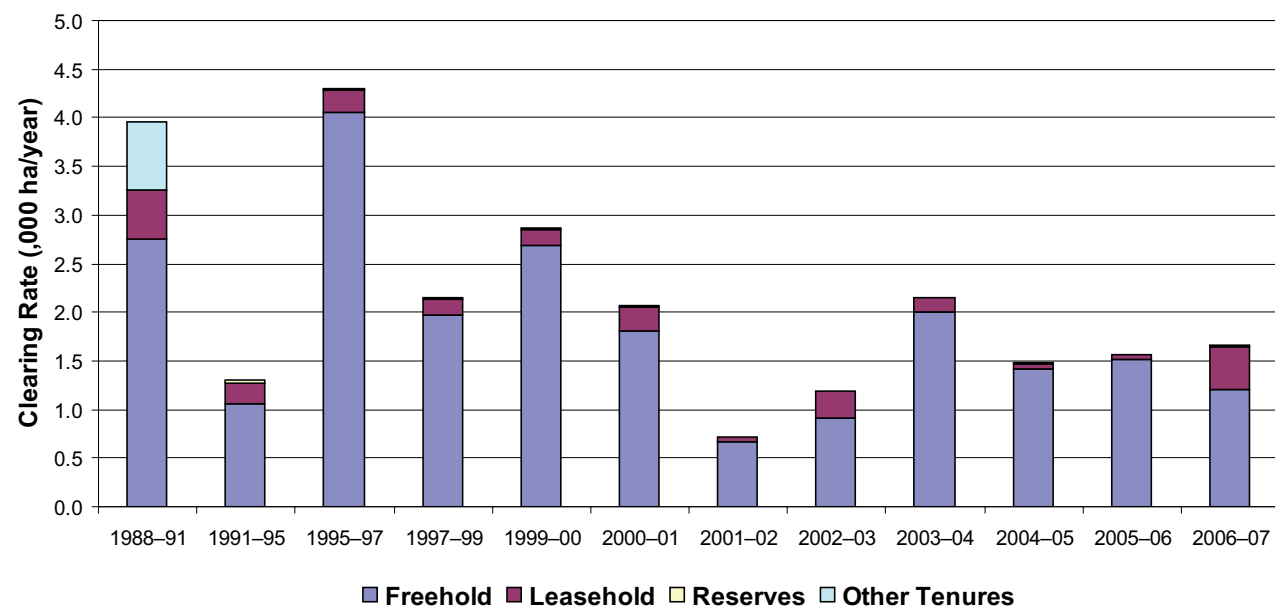


Figure 3. Woody vegetation clearing rates in the Mackay-Whitsunday Natural Resource Management region by tenure.

## Woody vegetation clearing by subcatchment

Table 3. Woody vegetation clearing rates in the Mackay-Whitsunday Natural Resource Management region by subcatchment #.

Period	Woody vegetation clearing rate (,000ha/yr) for					
	Misc other islands	O'Connell River	Pioneer River	Plane Creek	Proserpine River	Total
2006-07	0.026	0.597	0.034	0.806	0.190	1.655

# Please refer to Figure 26 of the main report (NRW, 2008) for the location of each subcatchment.

## Remaining woody vegetation

Table 4. Remaining woody vegetation in the Mackay-Whitsunday Natural Resource Management region by subcatchment.

	Misc other Islands	O'Connell River	Pioneer River	Plane Creek	Proserpine River	Whitsunday Islands	Total
Catchment area (,000 ha)	24	238	157	253	252	16	940
Area woody 2006 V2.3 (,000 ha)	16	166	114	148	181	15	640
% of catchment woody in 2006	68	70	73	58	72	96	68

## Woody vegetation clearing by replacement land cover

Table 5. Woody vegetation clearing rates in the Mackay-Whitsunday Natural Resource Management Region by replacement land cover.

Period	Woody vegetation clearing rate (,000ha/yr) for						
	Pasture	Crop	Forestry	Mining	Infrastructure	Settlement	Total*
1988-91	2.344	0.699	0.000	0.000	0.972	0.000	4.015
1991-95	0.774	0.556	0.015	0.000	0.024	0.005	1.374
1995-97	0.605	3.385	0.002	0.000	0.317	0.000	4.310
1997-99	0.104	2.016	0.000	0.002	0.040	0.000	2.163
1999-00	2.089	0.636	0.005	0.000	0.123	0.015	2.868
2000-01	1.462	0.515	0.014	0.002	0.073	0.000	2.067
2001-02	0.435	0.206	0.000	0.000	0.061	0.009	0.712
2002-03	1.012	0.147	0.000	0.000	0.019	0.007	1.185
2003-04	2.059	0.018	0.000	0.000	0.035	0.038	2.150
2004-05	1.366	0.038	0.001	0.002	0.040	0.028	1.475
2005-06	1.539	0.011	0.000	0.000	0.007	0.014	1.570
2006-07	1.466	0.029	0.000	0.000	0.108	0.051	1.654

\* total excludes natural tree death