



## Land cover change in the Fitzroy Natural Resource Management region

2006-07

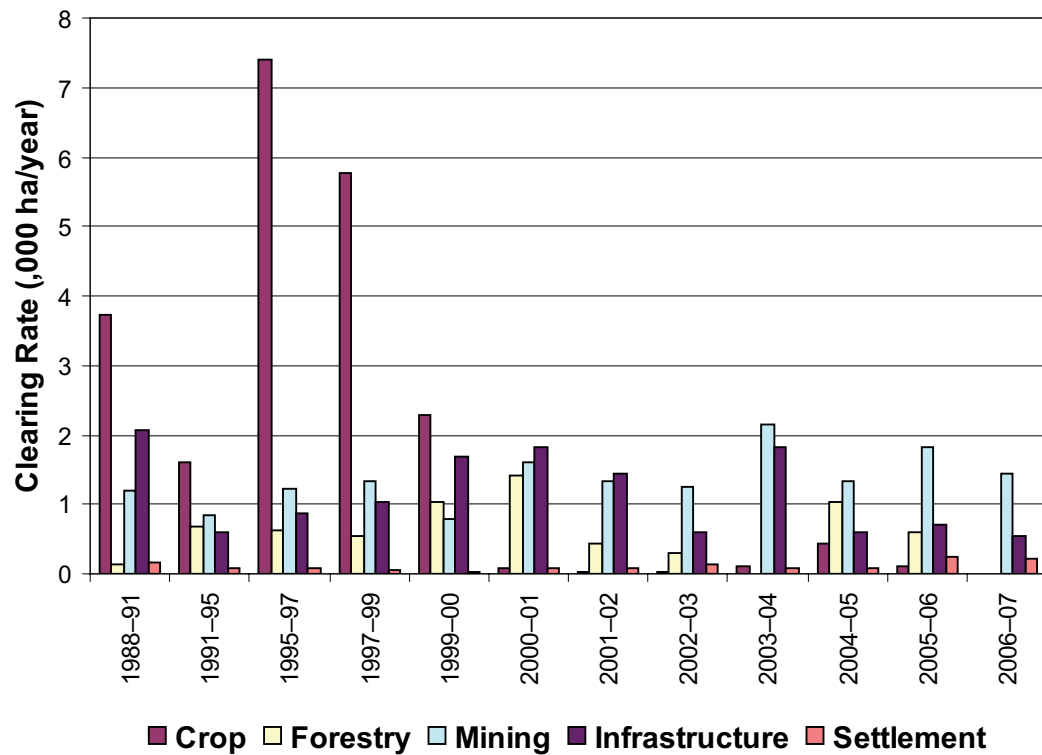
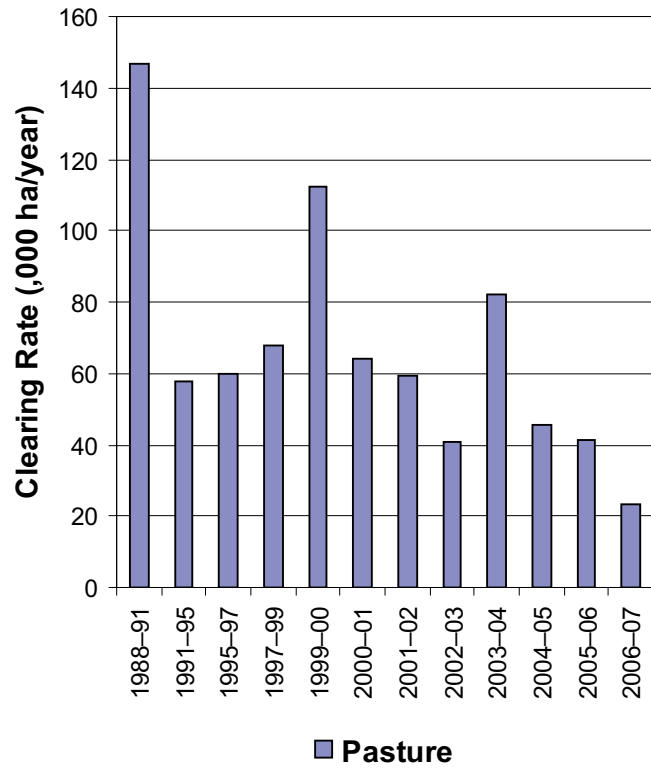


Figure 4. Woody vegetation clearing rates in the Fitzroy Natural Resource Management region by replacement land cover.

This fact sheet is 7 of 14 in a series detailing land cover change in Queensland's Natural Resource Management regions. These fact sheets are addenda to the report: Department of Natural Resources and Water (2008). *Land cover change in Queensland 2006-07: a Statewide Landcover and Trees Study (SLATS) Report*, Dec, 2008. Department of Natural Resources and Water, Brisbane.

Please refer to this report for further background, methods and explanatory notes.

The Queensland Government supports and encourages the dissemination and exchange of information. However, copyright protects this document. The State of Queensland has no objection to this material being reproduced, made available online or electronically, provided it is for your personal, non-commercial use, or use within your organisation; the material remains unaltered; and the State of Queensland is recognised as the owner.

© The State of Queensland 2008.

For further information:  
Statewide Landcover and Trees Study  
80 Meiers Road  
Indooroopilly QLD 4068  
Phone: 61 7 3896 9605  
Email: nrscdatacoordinator@nrw.qld.gov.au

[www.nrw.qld.gov.au/slats](http://www.nrw.qld.gov.au/slats)



#28780

### Summary

The 2006-07 period saw a 57% decrease in woody vegetation clearing within the Fitzroy region. The woody vegetation clearing rate of 25 504 hectares per year (ha/yr) is the lowest measured rate in the Fitzroy region, since satellite monitoring began.

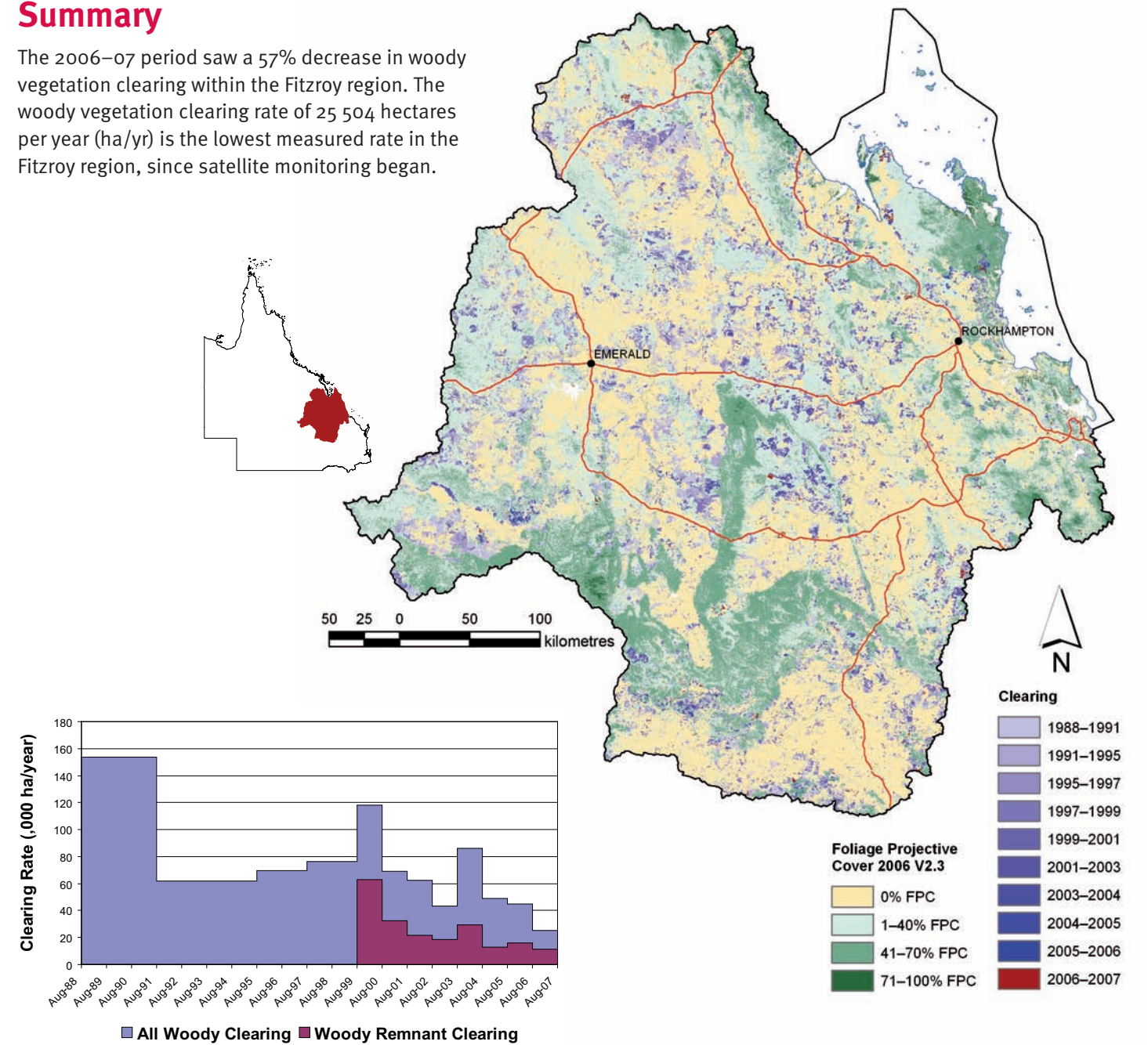


Figure 1. Woody vegetation clearing rates in the Fitzroy Natural Resource Management region.

Figure 2. Woody vegetation clearing for each change period.

## Woody vegetation clearing by remnant status

Table 1. Remnant and non-remnant woody vegetation clearing rates in the Fitzroy Natural Resource Management region.

Period	Woody vegetation clearing rate (,000ha/yr) of		
	Non-remnant woody	Remnant woody*	Total woody
1999-00	55.063	63.169	118.232
2000-01	36.685	32.246	68.931
2001-02	40.955	21.632	62.587
2002-03	25.025	18.345	43.371
2003-04	56.923	29.321	86.244
2004-05	36.170	12.851	49.020
2005-06	28.739	16.243	44.982
2006-07	14.235	11.269	25.504

\* Regional ecosystem remnant mapping prior to 1999 not used in this analysis.

## Woody vegetation clearing by tenure

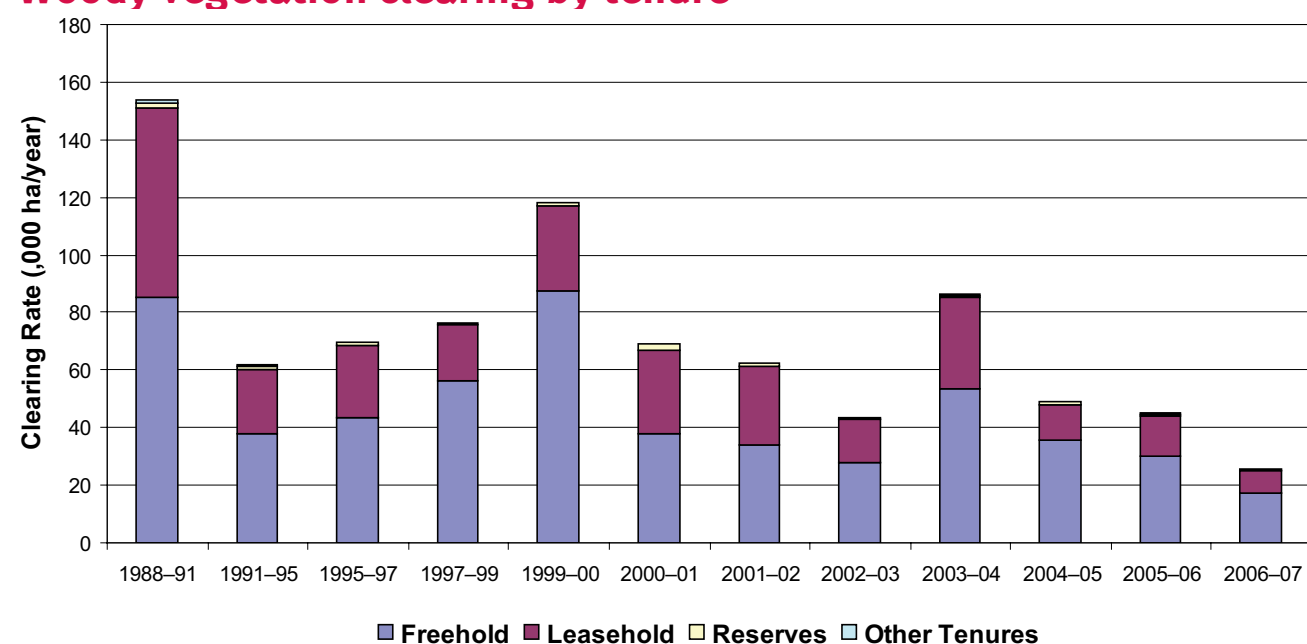


Figure 3. Woody vegetation clearing rates in the Fitzroy Natural Resource Management region by tenure.

Table 2. Woody vegetation clearing rates in the Fitzroy Natural Resource Management region by tenure.

Period	Woody vegetation clearing rate (,000ha/yr) on				Total
	Freehold	Leasehold	Reserves	Other tenures	
1988-91	85.325	65.837	1.419	1.303	153.884
1991-95	37.633	22.824	0.969	0.326	61.752
1995-97	43.537	24.971	0.955	0.358	69.821
1997-99	56.027	19.630	0.634	0.097	76.389
1999-00	87.516	29.484	1.224	0.007	118.232
2000-01	37.899	29.137	1.882	0.013	68.931
2001-02	33.868	27.654	1.022	0.043	62.587
2002-03	27.610	15.190	0.551	0.020	43.371
2003-04	53.670	31.689	0.522	0.362	86.242
2004-05	35.922	11.914	1.041	0.144	49.020
2005-06	30.144	13.661	0.621	0.523	44.949
2006-07	17.443	7.439	0.010	0.612	25.504

## Woody vegetation clearing by subcatchment

Table 3. Woody vegetation clearing rates in the Fitzroy Natural Resource Management region by subcatchment #.

Period	Woody vegetation clearing rate (,000ha/yr) for						
	Boyne River	Calliope River	Comet River	Curtis Island	Dawson River	Fitzroy River	Isaac River
2006-07	0.467	0.594	2.122	0.152	8.551	2.434	3.679

Table 3.continued

Period	Woody vegetation clearing rate (,000ha/yr) for						
	Mackenzie River	Misc other islands	Nogoa River	Shoalwater River	Styx River	Waterpark Creek	Total
2006-07	1.989	0.039	2.358	2.093	0.451	0.574	25.504

# Please refer to Figure 26 of the main report (NRW, 2008) for the location of each subcatchment.

## Remaining woody vegetation

Table 4. Remaining woody vegetation in the Fitzroy Natural Resource Management region by subcatchment.

	Boyne River	Calliope River	Comet River	Curtis Island	Dawson River	Fitzroy River	Isaac River
Catchment area (,000 ha)	250	224	1730	58	5076	1143	2237
Area woody 2006 V2.3 (,000 ha)	205	138	968	49	2573	668	1241
% of catchment woody in 2006	82	62	56	84	51	58	55

Table 4. continued

	Mackenzie River	Misc other Islands	Nogoa River	Shoalwater River	Styx River	Waterpark Creek	Total
Catchment area (,000 ha)	1298	35	2770	360	301	183	15664
Area woody 2006 V2.3 (,000 ha)	574	27	1604	257	162	161	8627
% of catchment woody in 2006	44	79	58	71	54	88	55

## Woody vegetation clearing by replacement land cover

Table 5. Woody vegetation clearing rates in the Fitzroy Natural Resource Management region by replacement land cover.

Period	Woody vegetation clearing rate (,000ha/yr) for						Total*
	Pasture	Crop	Forestry	Mining	Infrastructure	Settlement	
1988-91	146.617	3.733	0.146	1.199	2.075	0.157	153.928
1991-95	57.946	1.617	0.691	0.836	0.607	0.074	61.772
1995-97	59.667	7.388	0.624	1.222	0.868	0.092	69.861
1997-99	67.683	5.772	0.556	1.338	1.030	0.055	76.433
1999-00	112.450	2.274	1.026	0.777	1.683	0.022	118.232
2000-01	63.914	0.073	1.422	1.619	1.823	0.081	68.931
2001-02	59.275	0.032	0.428	1.340	1.444	0.068	62.587
2002-03	41.100	0.017	0.292	1.240	0.594	0.128	43.371
2003-04	82.097	0.112	0.000	2.144	1.822	0.068	86.244
2004-05	45.522	0.429	1.038	1.347	0.591	0.094	49.020
2005-06	41.474	0.104	0.610	1.826	0.714	0.253	44.982
2006-07	23.284	0.000	0.000	1.450	0.547	0.223	25.504

\* total excludes natural tree death