



# Land cover change in the Desert Channels Natural Resource Management region

2006-07

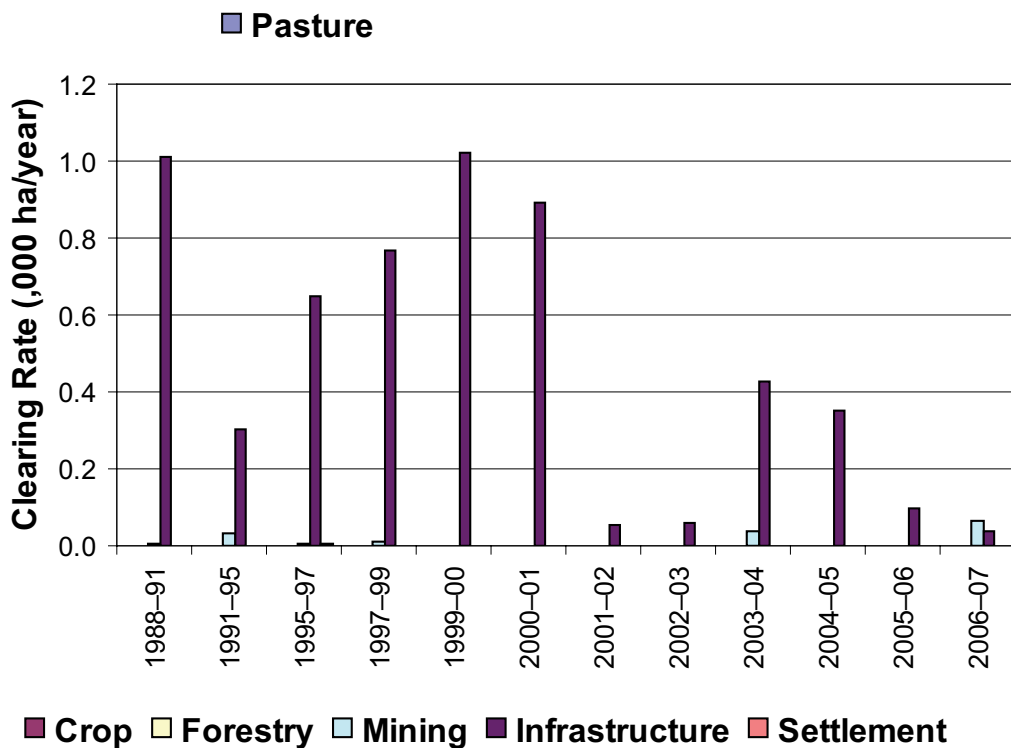
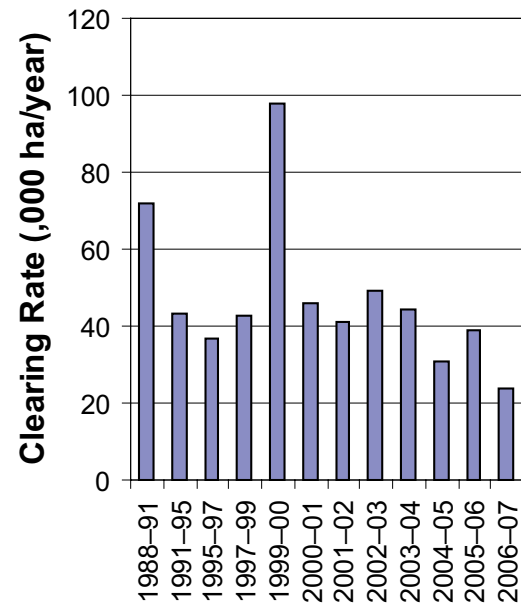


Figure 4. Woody vegetation clearing rates in the Desert Channels Natural Resource Management region by replacement land cover.

This fact sheet is 6 of 14 in a series detailing land cover change in Queensland's Natural Resource Management regions. These fact sheets are addenda to the report: Department of Natural Resources and Water (2008). *Land cover change in Queensland 2006-07: a Statewide Landcover and Trees Study (SLATS) Report*, Dec, 2008. Department of Natural Resources and Water, Brisbane.

Please refer to this report for further background, methods and explanatory notes.

The Queensland Government supports and encourages the dissemination and exchange of information. However, copyright protects this document. The State of Queensland has no objection to this material being reproduced, made available online or electronically, provided it is for your personal, non-commercial use, or use within your organisation; the material remains unaltered; and the State of Queensland is recognised as the owner.

© The State of Queensland 2008.

For further information:  
Statewide Landcover and Trees Study  
80 Meiers Road  
Indooroopilly QLD 4068  
Phone: 61 7 3896 9605  
Email: nrscdatacoordinator@nrw.qld.gov.au

[www.nrw.qld.gov.au/slats](http://www.nrw.qld.gov.au/slats)



#28780

## Summary

The 2006-07 period saw the lowest measured woody vegetation clearing rate of 24 076 hectares per year (ha/yr) in the Desert Channels region, since satellite monitoring began.

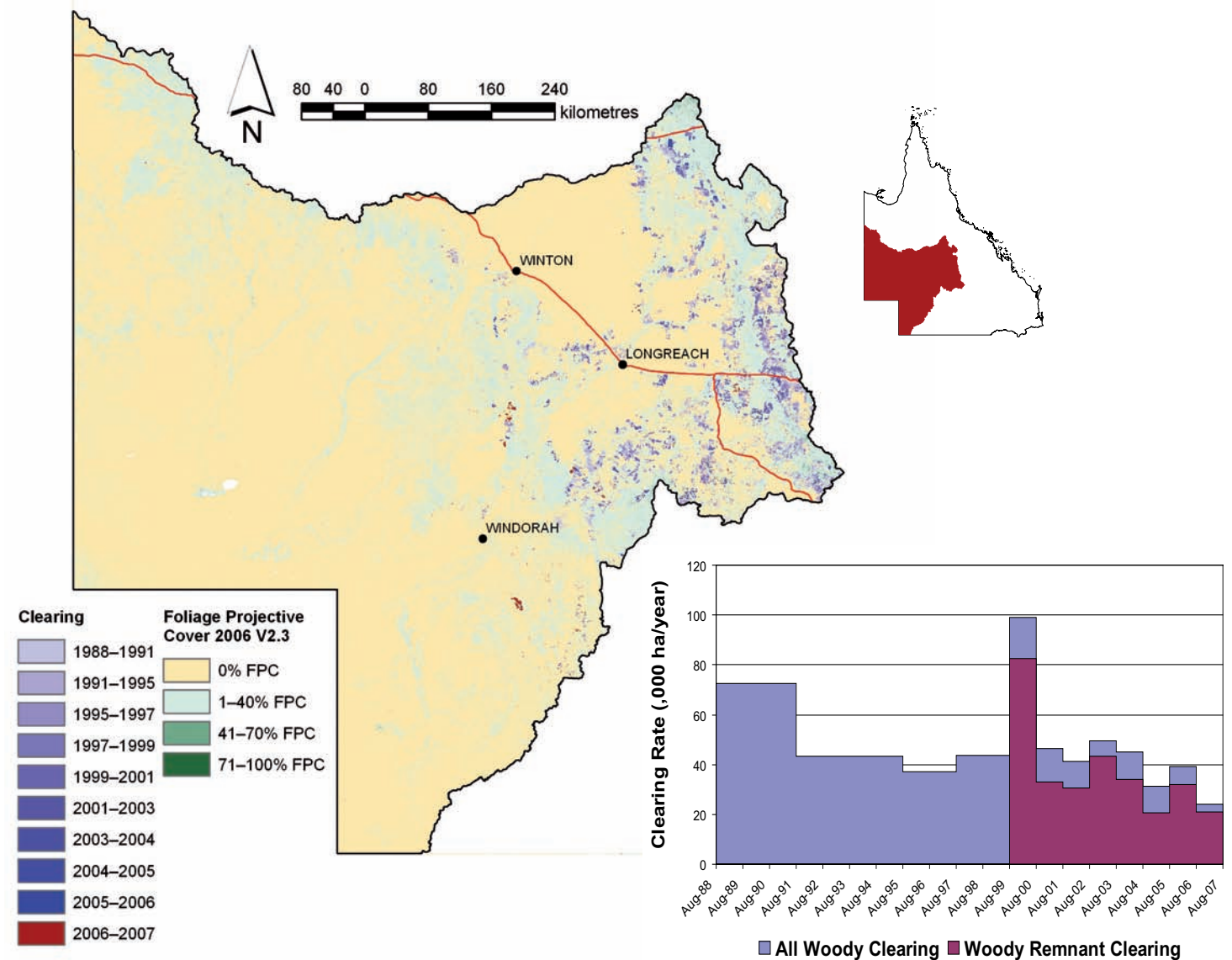


Figure 1. Woody vegetation clearing for each change period.

Figure 2. Woody vegetation clearing rates in the Desert Channels Natural Resource Management region.

## Woody vegetation clearing by remnant status

Table 1. Remnant and non-remnant woody vegetation clearing rates in the Desert Channels Natural Resource Management region.

Period	Woody vegetation clearing rate (,000ha/yr) of		
	Non-remnant woody	Remnant woody*	Total woody
1999-00	16.623	82.450	99.073
2000-01	13.717	32.868	46.585
2001-02	10.552	30.758	41.310
2002-03	6.507	43.161	49.668
2003-04	11.137	33.903	45.040
2004-05	10.469	20.790	31.258
2005-06	7.233	31.851	39.084
2006-07	2.938	21.137	24.076

\* Regional ecosystem remnant mapping prior to 1999 not used in this analysis.

## Woody vegetation clearing by tenure

Table 2. Woody vegetation clearing rates in the Desert Channels Natural Resource Management region by tenure.

Period	Woody vegetation clearing rate (,000ha/yr) on				
	Freehold	Leasehold	Reserves	Other tenures	Total
1988-91	24.281	48.312	0.046	0.018	72.658
1991-95	15.143	28.249	0.014	0.002	43.407
1995-97	15.999	21.170	0.068	0.004	37.240
1997-99	19.752	23.765	0.002	0.112	43.631
1999-00	69.674	29.372	0.004	0.023	99.073
2000-01	14.824	31.750	0.008	0.003	46.585
2001-02	20.923	20.351	0.036	0.000	41.310
2002-03	17.221	32.447	0.000	0.000	49.668
2003-04	20.096	24.920	0.015	0.000	45.030
2004-05	6.906	24.332	0.020	0.000	31.258
2005-06	10.555	28.512	0.017	0.000	39.084
2006-07	3.654	20.388	0.033	0.000	24.076

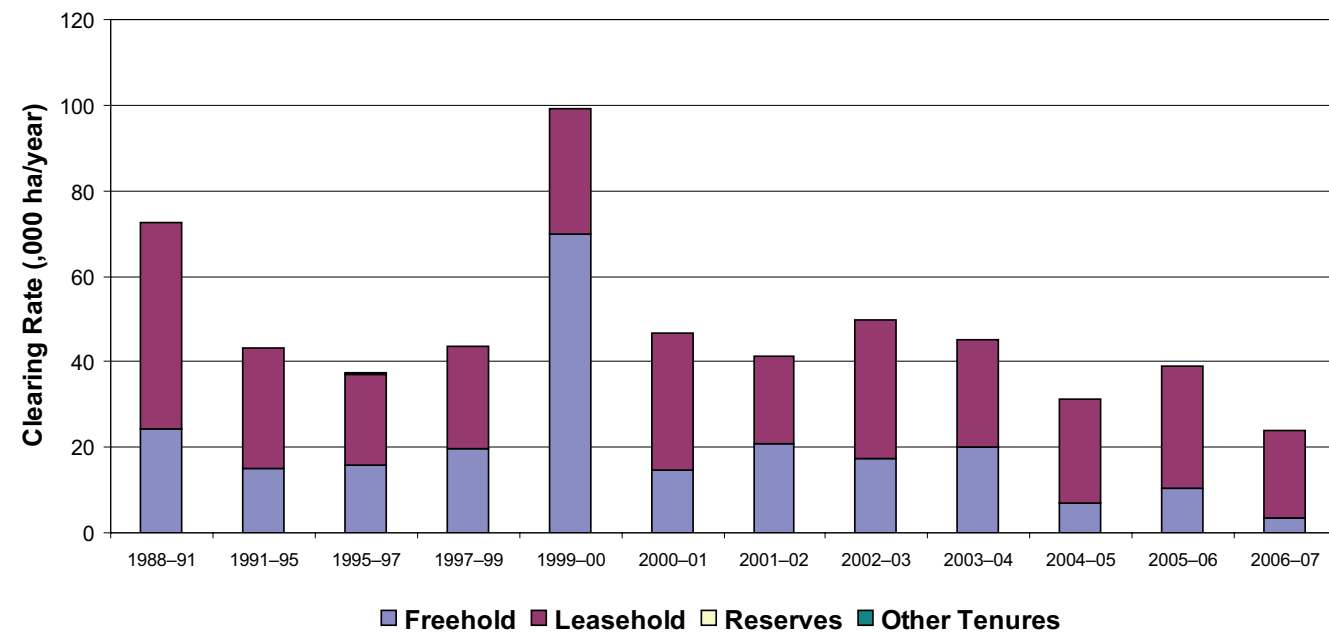


Figure 3. Woody vegetation clearing rates in the Desert Channels Natural Resource Management region by tenure.

## Woody vegetation clearing by subcatchment

Table 3. Woody vegetation clearing rates in the Desert Channels Natural Resource Management region by subcatchment #.

Period	Woody vegetation clearing rate (,000ha/yr) for						
	Barcoo River	Coopers Creek	Diamantina River	Eyre Creek	Georgina River	Thomson River	Total
2006-07	7.371	7.159	0.131	0.017	0.227	9.171	24.076

# Please refer to Figure 26 of the main report (NRW, 2008) for the location of each subcatchment.

## Remaining woody vegetation

Table 4. Remaining woody vegetation in the Desert Channels Natural Resource Management region by subcatchment.

	Barcoo River	Coopers Creek	Diamantina River	Eyre Creek	Georgina River	Hay	Thomson River	Total
Catchment area (,000 ha)	5323	9576	11917	7178	7208	277	9507	51000
Area woody 2006 V2.3 (,000 ha)	2415	0	1713	546	1788	43	3113	9619
% of catchment woody in 2006	45	0	14	8	25	16	33	19

Note: Catchments with a low proportion of woody vegetation cover may contain significant areas of natural grasslands.

## Woody vegetation clearing by replacement land cover

Table 5. Woody vegetation clearing rates in the Desert Channels Natural Resource Management region by replacement land cover.

Period	Woody vegetation clearing rate (,000ha/yr) for						
	Pasture	Crop	Forestry	Mining	Infrastructure	Settlement	Total*
1988-91	71.644	0.000	0.000	0.004	1.011	0.000	72.658
1991-95	43.085	0.000	0.000	0.032	0.304	0.000	43.421
1995-97	36.578	0.000	0.000	0.006	0.650	0.007	37.241
1997-99	42.854	0.000	0.000	0.013	0.770	0.000	43.637
1999-00	98.048	0.000	0.000	0.002	1.023	0.000	99.073
2000-01	45.694	0.000	0.000	0.000	0.889	0.002	46.585
2001-02	41.259	0.000	0.000	0.000	0.051	0.000	41.310
2002-03	49.607	0.000	0.000	0.000	0.062	0.000	49.668
2003-04	44.571	0.000	0.000	0.040	0.429	0.000	45.040
2004-05	30.907	0.000	0.000	0.000	0.350	0.001	31.258
2005-06	38.988	0.000	0.000	0.001	0.095	0.000	39.084
2006-07	23.969	0.000	0.000	0.066	0.040	0.000	24.076

\* total excludes natural tree death