



# Land cover change in the Condamine Natural Resource Management region

2006-07

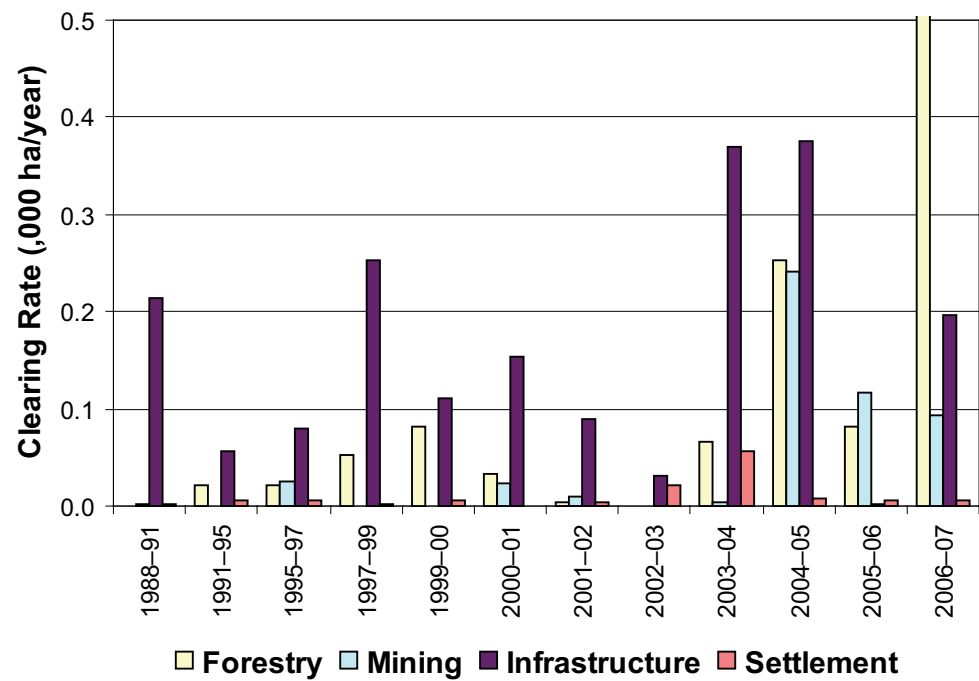
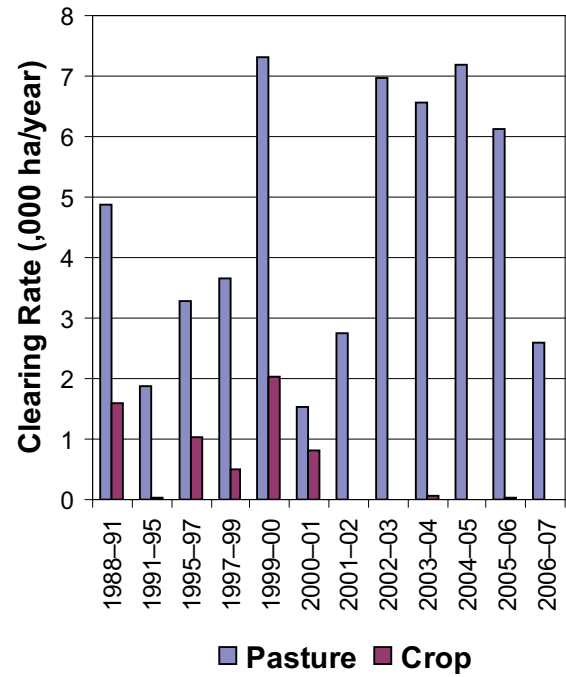


Figure 4. Woody vegetation clearing rates in the Condamine Natural Resource Management region by replacement land cover.

This fact sheet is 5 of 14 in a series detailing land cover change in Queensland's Natural Resource Management regions. These fact sheets are addenda to the report: Department of Natural Resources and Water (2008). *Land cover change in Queensland 2006-07: a Statewide Landcover and Trees Study (SLATS) Report*, Dec, 2008. Department of Natural Resources and Water, Brisbane.

Please refer to this report for further background, methods and explanatory notes. The Queensland Government supports and encourages the dissemination and exchange of information. However, copyright protects this document. The State of Queensland has no objection to this material being reproduced, made available online or electronically, provided it is for your personal, non-commercial use, or use within your organisation; the material remains unaltered; and the State of Queensland is recognised as the owner.

© The State of Queensland 2008.

For further information:  
Statewide Landcover and Trees Study  
80 Meiers Road  
Indooroopilly QLD 4068  
Phone: 61 7 3896 9605  
Email: nrscdatacoordinator@nrw.qld.gov.au

[www.nrw.qld.gov.au/slats](http://www.nrw.qld.gov.au/slats)

#28780



## Summary

In the Condamine region for 2006-07, there was a 47% decrease in non remnant woody vegetation clearing. The woody vegetation clearing rate for 2006-07 was 3 473 hectares per year (ha/yr).

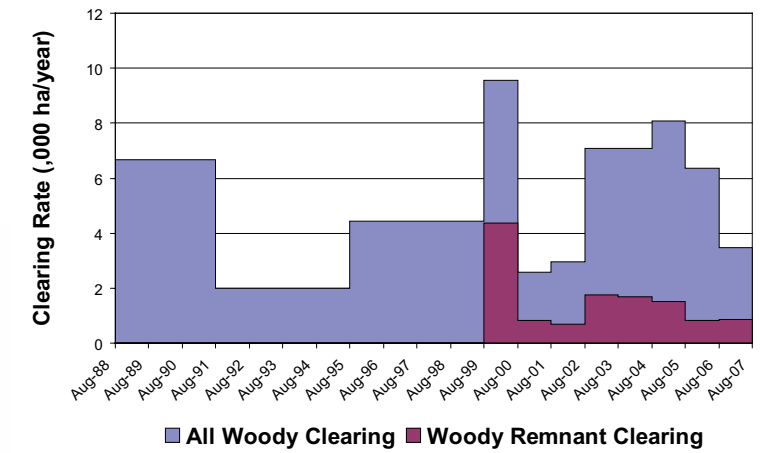


Figure 1. Woody vegetation clearing rates in the Condamine Natural Resource Management region.

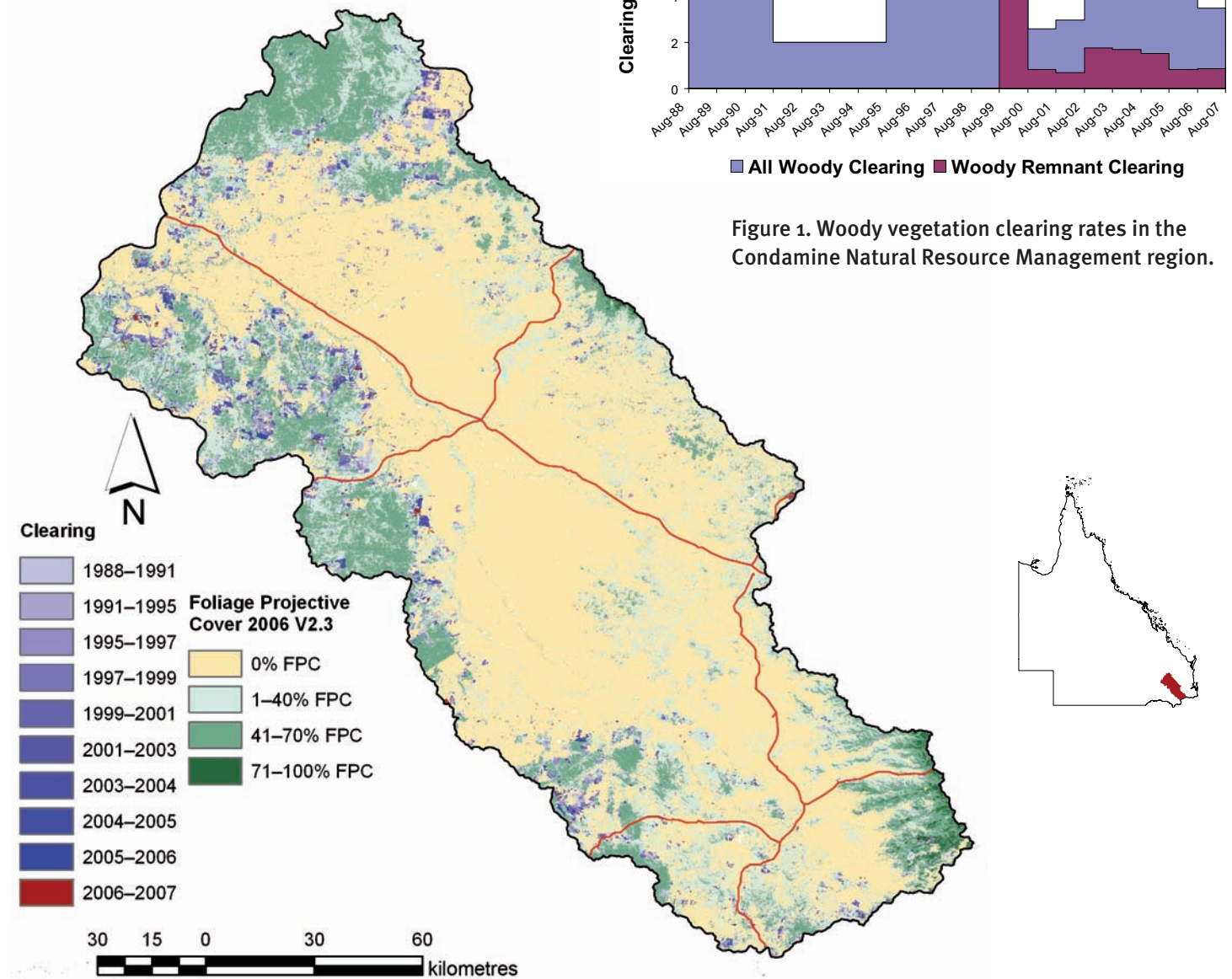


Figure 2. Woody vegetation clearing for each change period.

## Woody vegetation clearing by remnant status

Table 1. Remnant and non-remnant woody vegetation clearing rates in the Condamine Natural Resource Management region.

Period	Woody vegetation clearing rate (,000ha/yr) of		
	Non-remnant woody	Remnant woody*	Total woody
1999-00	5.191	4.356	9.547
2000-01	1.765	0.810	2.576
2001-02	2.241	0.702	2.943
2002-03	5.329	1.758	7.087
2003-04	5.391	1.701	7.092
2004-05	6.553	1.515	8.068
2005-06	5.548	0.822	6.370
2006-07	2.620	0.853	3.473

\* Regional ecosystem remnant mapping prior to 1999 not used in this analysis.

## Woody vegetation clearing by tenure

Table 2. Woody vegetation clearing rates in the Condamine Natural Resource Management region by tenure.

Period	Woody vegetation clearing rate (,000ha/yr) on				
	Freehold	Leasehold	Reserves	Other tenures	Total
1988-91	6.119	0.464	0.086	0.006	6.675
1991-95	1.872	0.117	0.014	0.000	2.003
1995-97	4.214	0.183	0.028	0.003	4.428
1997-99	4.068	0.233	0.129	0.010	4.441
1999-00	9.338	0.129	0.080	0.000	9.547
2000-01	2.494	0.024	0.057	0.000	2.576
2001-02	2.716	0.128	0.094	0.000	2.938
2002-03	6.866	0.158	0.062	0.000	7.086
2003-04	6.875	0.149	0.068	0.000	7.092
2004-05	7.717	0.187	0.164	0.000	8.068
2005-06	5.994	0.296	0.079	0.000	6.369
2006-07	3.097	0.118	0.258	0.000	3.473

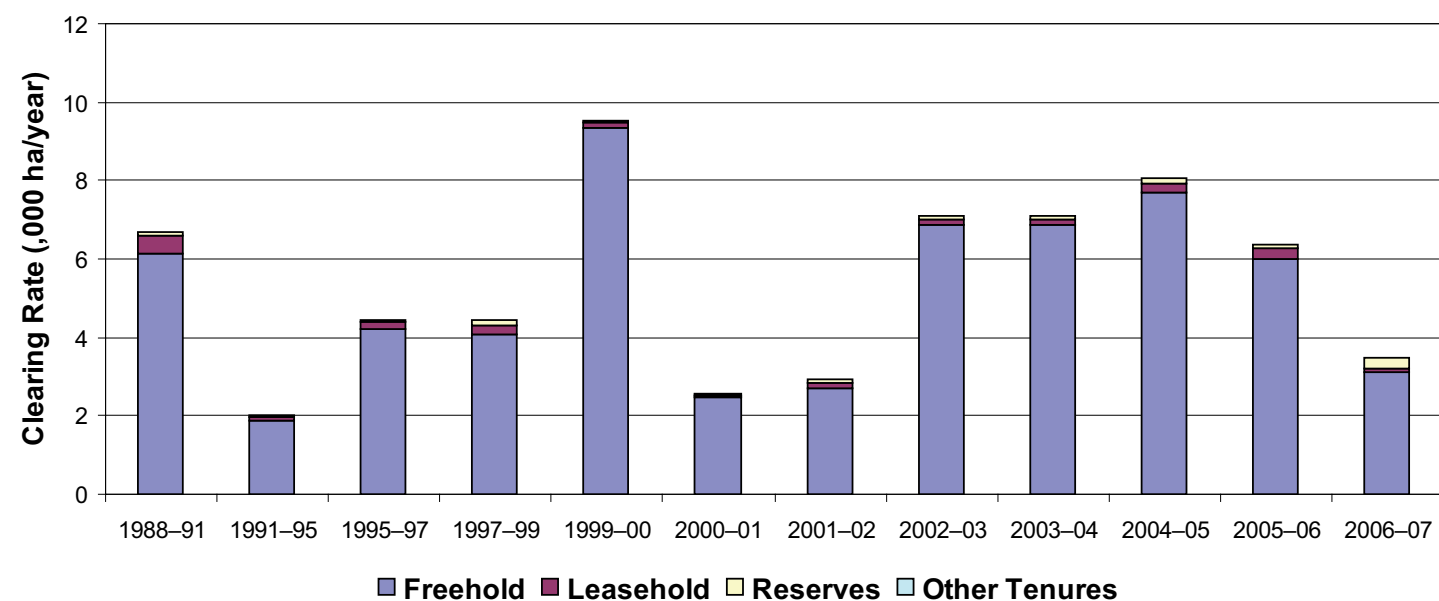


Figure 3. Woody vegetation clearing rates in the Condamine Natural Resource Management region by tenure.

## Woody vegetation clearing by subcatchment

Table 3. Woody vegetation clearing rates in the Condamine Natural Resource Management region by subcatchment.

Period	Clearing rate (,000ha/yr) for			
	Balonne River	Condamine River	Lockyer Creek	Total
2006-07	0.001	3.471	0.000	3.473

# Please refer to Figure 26 of the main report (NRW, 2008) for the location of each subcatchment.

## Remaining woody vegetation

Table 4. Remaining woody vegetation in the Condamine Natural Resource Management region by subcatchment.

	Condamine River
Catchment area (,000 ha)	2443
Area woody 2006 V2.3 (,000 ha)	946
% of catchment woody in 2006	39

## Woody vegetation clearing by replacement land cover

Table 5. Woody vegetation clearing rates in the Condamine Natural Resource Management region by replacement land cover.

Period	Woody vegetation clearing rate (,000ha/yr) for						
	Pasture	Crop	Forestry	Mining	Infrastructure	Settlement	Total*
1988-91	4.871	1.588	0.000	0.002	0.213	0.001	6.676
1991-95	1.888	0.029	0.022	0.001	0.057	0.006	2.004
1995-97	3.282	1.016	0.021	0.026	0.081	0.005	4.429
1997-99	3.650	0.485	0.053	0.000	0.252	0.001	4.441
1999-00	7.304	2.044	0.083	0.000	0.111	0.006	9.547
2000-01	1.535	0.828	0.034	0.024	0.154	0.001	2.576
2001-02	2.824	0.013	0.005	0.009	0.090	0.003	2.943
2002-03	7.033	0.000	0.000	0.000	0.032	0.022	7.087
2003-04	6.549	0.048	0.066	0.003	0.369	0.056	7.092
2004-05	7.184	0.007	0.253	0.242	0.375	0.008	8.068
2005-06	6.139	0.025	0.082	0.116	0.002	0.005	6.370
2006-07	2.607	0.000	0.567	0.094	0.197	0.006	3.473

\* total excludes natural tree death