

Woody vegetation clearing by replacement land cover

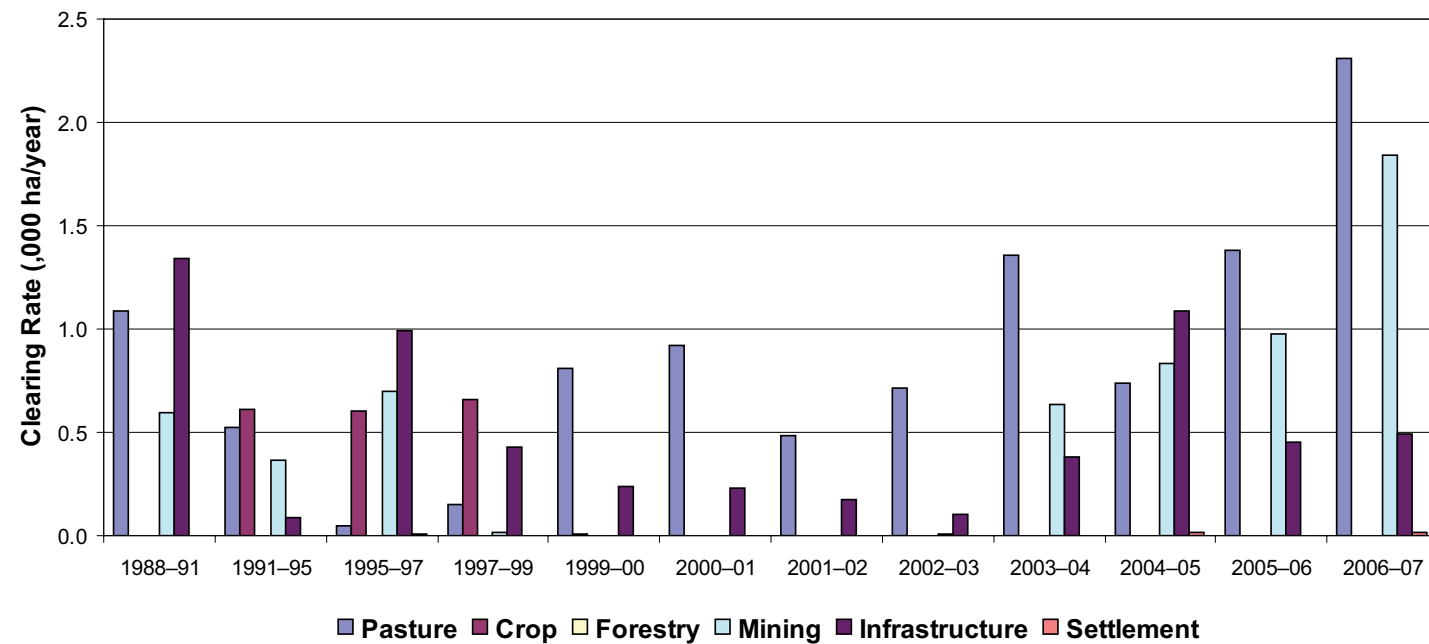


Table 5. Woody vegetation clearing rates in the Cape York Natural Resource Management region by replacement land cover.

Period	Woody vegetation clearing rate (.000ha/yr) for						Total*
	Pasture	Crop	Forestry	Mining	Infrastructure	Settlement	
1988-91	1.090	0.000	0.000	0.597	1.339	0.002	3.027
1991-95	0.520	0.608	0.000	0.368	0.089	0.001	1.587
1995-97	0.044	0.599	0.000	0.697	0.991	0.007	2.338
1997-99	0.154	0.655	0.000	0.018	0.431	0.002	1.260
1999-00	0.810	0.004	0.002	0.000	0.235	0.003	1.055
2000-01	0.918	0.000	0.000	0.000	0.229	0.000	1.147
2001-02	0.488	0.000	0.000	0.000	0.176	0.003	0.666
2002-03	0.718	0.000	0.000	0.005	0.105	0.000	0.828
2003-04	1.360	0.000	0.000	0.634	0.379	0.003	2.376
2004-05	0.735	0.000	0.000	0.833	1.086	0.012	2.666
2005-06	1.382	0.000	0.000	0.979	0.450	0.003	2.814
2006-07	2.309	0.000	0.000	1.841	0.491	0.015	4.656

* total excludes natural tree death

Figure 4. Woody vegetation clearing rates in the Cape York Natural Resource Management region by replacement land cover.



This fact sheet is 4 of 14 in a series detailing land cover change in Queensland's Natural Resource Management regions. These fact sheets are addenda to the report: Department of Natural Resources and Water (2008). *Land cover change in Queensland 2006-07: a Statewide Landcover and Trees Study (SLATS) Report*, Dec, 2008. Department of Natural Resources and Water, Brisbane.

Please refer to this report for further background, methods and explanatory notes. The Queensland Government supports and encourages the dissemination and exchange of information. However, copyright protects this document. The State of Queensland has no objection to this material being reproduced, made available online or electronically, provided it is for your personal, non-commercial use, or use within your organisation; the material remains unaltered; and the State of Queensland is recognised as the owner.

© The State of Queensland 2008.

For further information:
Statewide Landcover and Trees Study
80 Meiers Road
Indooroopilly QLD 4068
Phone: 61 7 3896 9605
Email: nrsdatacoordinator@nrw.qld.gov.au

www.nrw.qld.gov.au/slats



#28780

Land cover change in the Cape York Natural Resource Management region

2006-07

Summary

The 2006-07 period saw a marked increase in remnant woody vegetation clearing within the Cape York region. The replacement landcover class of mining increased by 88% over the previous period.

The woody vegetation clearing rate for 2006-07 was 4 656 hectares per year (ha/yr).

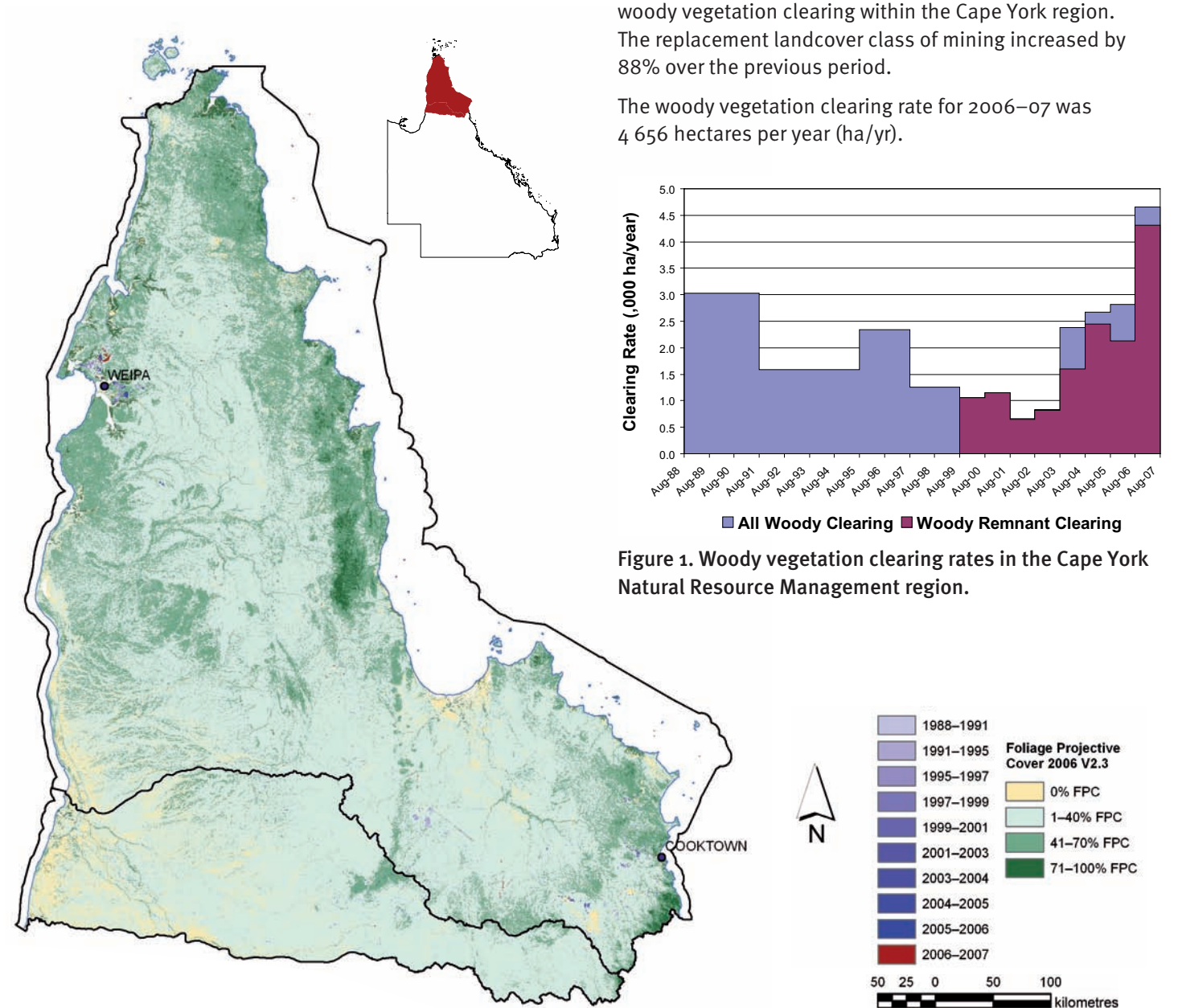


Figure 1. Woody vegetation clearing rates in the Cape York Natural Resource Management region.

Figure 2. Woody vegetation clearing for each change period.

Note that the Cape York Natural Resource Management region overlaps the Northern Gulf Natural Resource Management region.

Woody vegetation clearing by remnant status

Table 1. Remnant and Non-remnant woody vegetation clearing Rates in the Cape York Natural Resource Management region.

Period	Woody vegetation clearing rate (.00oha/yr) of		
	Non-remnant woody	Remnant woody*	Total woody
1999-00	0.002	1.053	1.055
2000-01	0.000	1.147	1.147
2001-02	0.012	0.654	0.666
2002-03	0.013	0.816	0.828
2003-04	0.778	1.598	2.376
2004-05	0.218	2.448	2.666
2005-06	0.682	2.133	2.814
2006-07	0.337	4.319	4.656

* Regional ecosystem remnant mapping prior to 1999 not used in this analysis.

Woody vegetation clearing by tenure

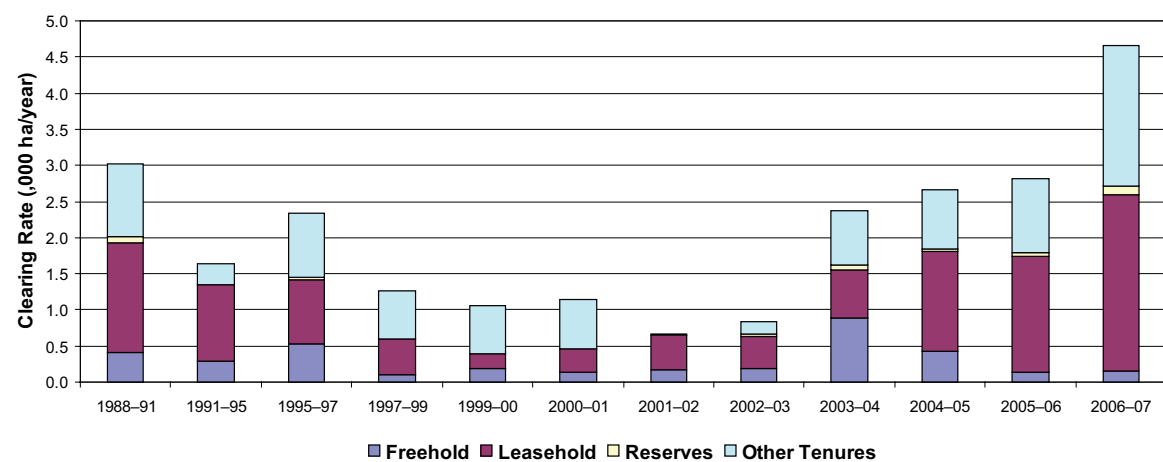


Figure 3. Woody vegetation clearing rates in the Cape York Natural Resource Management region by tenure.

Table 2. Woody vegetation clearing rates in the Cape York Natural Resource Management region by tenure.

Period	Woody vegetation clearing rate (.00oha/yr) on				Total
	Freehold	Leasehold	Reserves	Other tenures	
1988-91	0.408	1.528	0.073	1.018	3.027
1991-95	0.282	1.061	0.005	0.284	1.632
1995-97	0.525	0.888	0.034	0.892	2.339
1997-99	0.105	0.484	0.016	0.654	1.259
1999-00	0.181	0.214	0.002	0.658	1.055
2000-01	0.134	0.323	0.009	0.682	1.147
2001-02	0.168	0.480	0.002	0.016	0.666
2002-03	0.190	0.444	0.030	0.164	0.828
2003-04	0.888	0.659	0.072	0.756	2.375
2004-05	0.428	1.380	0.043	0.814	2.665
2005-06	0.139	1.595	0.066	1.015	2.814
2006-07	0.148	2.442	0.121	1.944	4.656

Woody vegetation clearing by subcatchment

Table 3. Woody vegetation clearing rates in the Cape York Natural Resource Management region by subcatchment #.

Period	Woody vegetation clearing rate (.00oha/yr) for										
	Alice River	Archer River	Coen River	Coleman River	Ducie River	Edward River	Embley River	Endeavour River	Hann River	Holroyd River	Jardine River
2006-07	0.056	0.106	0.095	0.554	0.030	0.134	0.127	0.116	0.266	0.106	0.105

Table 3. continued

Period	Woody vegetation clearing rate (.00oha/yr) for											Total
	Kendall River	Lockhart River	Mission River	Mitchell River	Normanby River	Palmer River	Pascoe River	Skardon River	Stewart River	Watson River	Wentlock River	
2006-07	0.120	0.044	1.605	0.212	0.443	0.032	0.016	0.000	0.097	0.262	0.132	4.656

*includes overlap area

Please refer to Figure 26 of the main report (NRW, 2008) for the location of each subcatchment.

Remaining woody vegetation

Table 4. Remaining woody vegetation in the Cape York Natural Resource Management region by subcatchment.

	Alice River	Archer River	Coen River	Coleman River	Ducie Dulhunty River	Edward River	Embley River	Endeavour River	Hann River	Holroyd River	Jacky Jacky River	Jardine River	Jeanine River
Catchment area (.000)	1294	1061	321	534	358	752	192	210	956	544	296	328	363
Area woody 2006 V2.3 (.000 ha)	1186	1026	317	502	349	654	186	205	888	532	283	319	343
% of attachment woody in 2006	92	97	99	94	97	87	97	98	93	98	96	97	94

Table 4. continued

	Kendall River	Lockhart River	McDonald River	Mission River	Mitchell River	Normanby River	Olive River	Palmer River	Pascoe River	Skardon River	Stewart River	Watson River	Wentlock River	Total
Catchment area (.000)	485	288	271	268	861	1485	205	811	212	44	274	468	752	13643
Area woody 2006 V2.3 (.000 ha)	481	280	262	253	627	1427	200	788	210	41	267	462	739	12837
% of attachment woody in 2005	99	97	97	94	73	96	97	97	99	94	97	99	98	94