



Land cover change in the Burnett-Mary Natural Resource Management region

2006-07

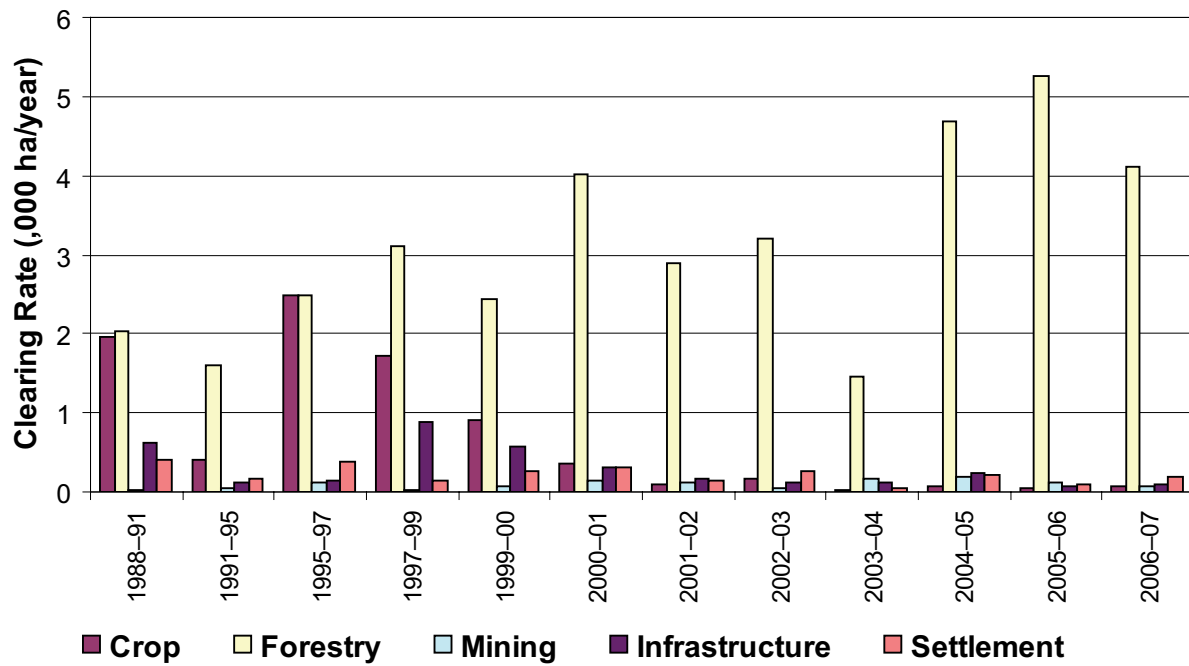
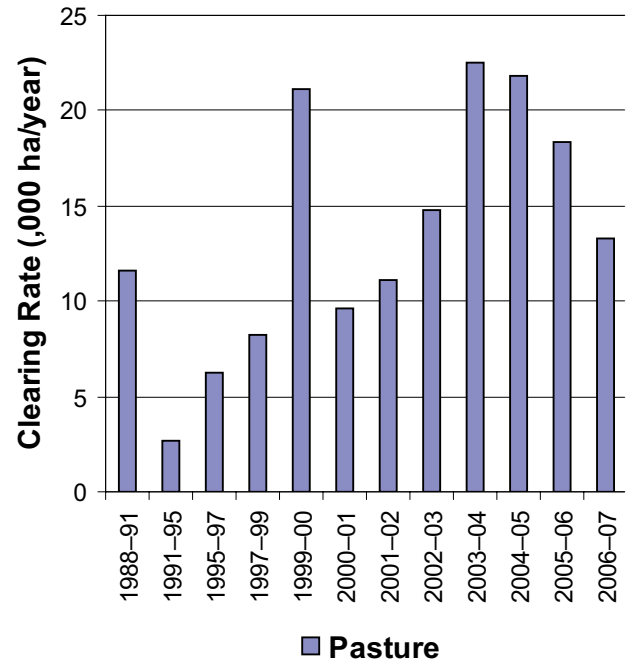


Figure 4. Woody vegetation clearing rates in the Burnett-Mary Natural Resource Management region by replacement land cover.

This fact sheet is 3 of 14 in a series detailing land cover change in Queensland's Natural Resource Management regions. These fact sheets are addenda to the report: Department of Natural Resources and Water (2008). *Land cover change in Queensland 2006-07: a Statewide Landcover and Trees Study (SLATS) Report*, Dec, 2008. Department of Natural Resources and Water, Brisbane.

Please refer to this report for further background, methods and explanatory notes. The Queensland Government supports and encourages the dissemination and exchange of information. However, copyright protects this document. The State of Queensland has no objection to this material being reproduced, made available online or electronically, provided it is for your personal, non-commercial use, or use within your organisation; the material remains unaltered; and the State of Queensland is recognised as the owner.

© The State of Queensland 2008.

For further information:
Statewide Landcover and Trees Study
80 Meiers Road
Indooroopilly QLD 4068
Phone: 61 7 3896 9605
Email: nrscdatacoordinator@nrw.qld.gov.au

www.nrw.qld.gov.au/slats



#28780

Summary

The 2006-07 period saw a 42% decrease in non remnant woody vegetation clearing within the Burnett Mary region. The woody vegetation clearing rate for 2006-07 was 17 857 hectares per year (ha/yr).

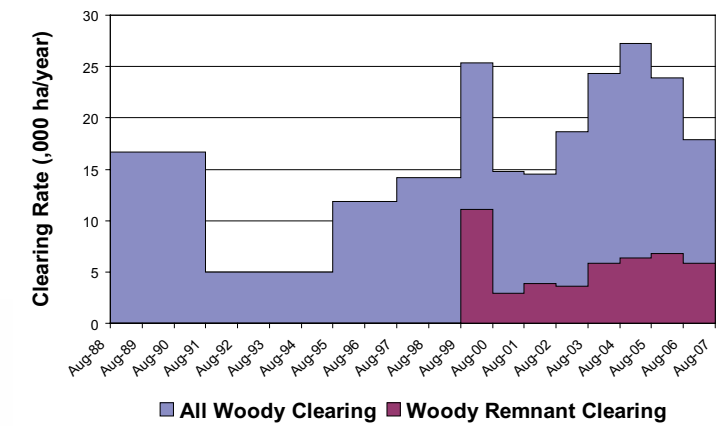


Figure 1. Woody vegetation clearing rates in the Burnett-Mary Natural Resource Management region.

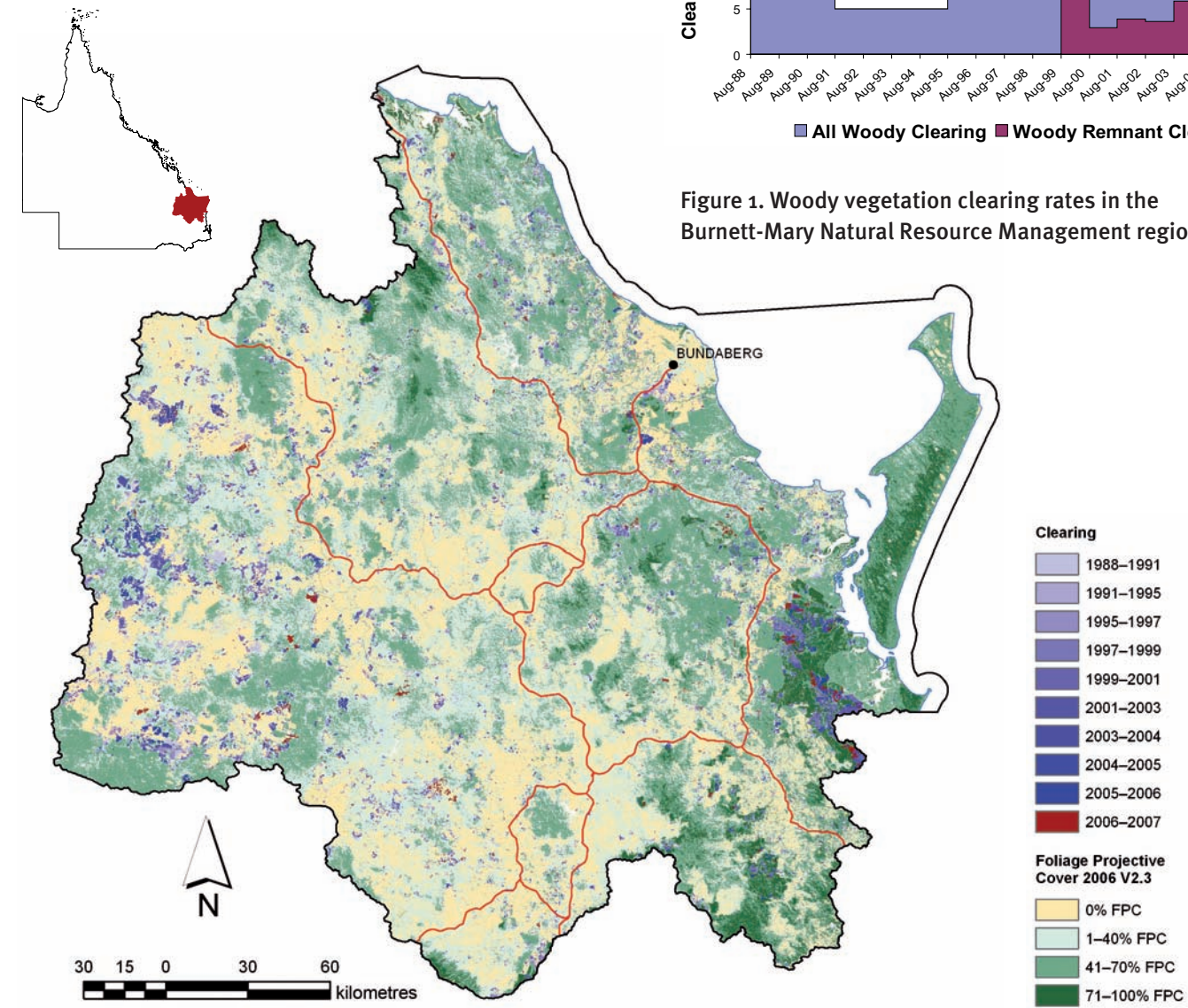


Figure 2. Woody vegetation clearing for each change period.

Woody vegetation clearing by remnant status

Table 1. Remnant and non-remnant woody vegetation clearing rates in the Burnett-Mary Natural Resource Management region.

Period	Woody vegetation clearing rate (,oooha/yr) of		
	Non-remnant woody	Remnant woody*	Total woody
1999-00	14.279	11.080	25.359
2000-01	11.836	2.945	14.781
2001-02	10.672	3.897	14.568
2002-03	15.045	3.630	18.675
2003-04	18.480	5.887	24.367
2004-05	20.886	6.346	27.231
2005-06	17.093	6.830	23.923
2006-07	12.028	5.830	17.857

* Regional ecosystem remnant mapping prior to 1999 not used in this analysis.

Woody vegetation clearing by tenure

Table 2. Woody vegetation clearing rates in the Burnett-Mary Natural Resource Management region by tenure.

Period	Woody vegetation clearing rate (,oooha/yr) on				
	Freehold	Leasehold	Reserves	Other tenures	Total
1988-91	12.787	1.469	2.387	0.030	16.674
1991-95	2.888	0.509	1.581	0.005	4.983
1995-97	8.959	0.400	2.454	0.008	11.822
1997-99	10.328	0.692	3.113	0.006	14.138
1999-00	21.350	1.435	2.569	0.006	25.359
2000-01	10.059	0.657	4.065	0.001	14.781
2001-02	10.246	1.425	2.897	0.000	14.568
2002-03	13.399	2.056	3.218	0.003	18.675
2003-04	18.442	1.980	3.940	0.005	24.366
2004-05	22.192	1.073	3.965	0.001	27.231
2005-06	18.837	0.778	4.307	0.000	23.922
2006-07	11.399	1.942	4.514	0.001	17.857

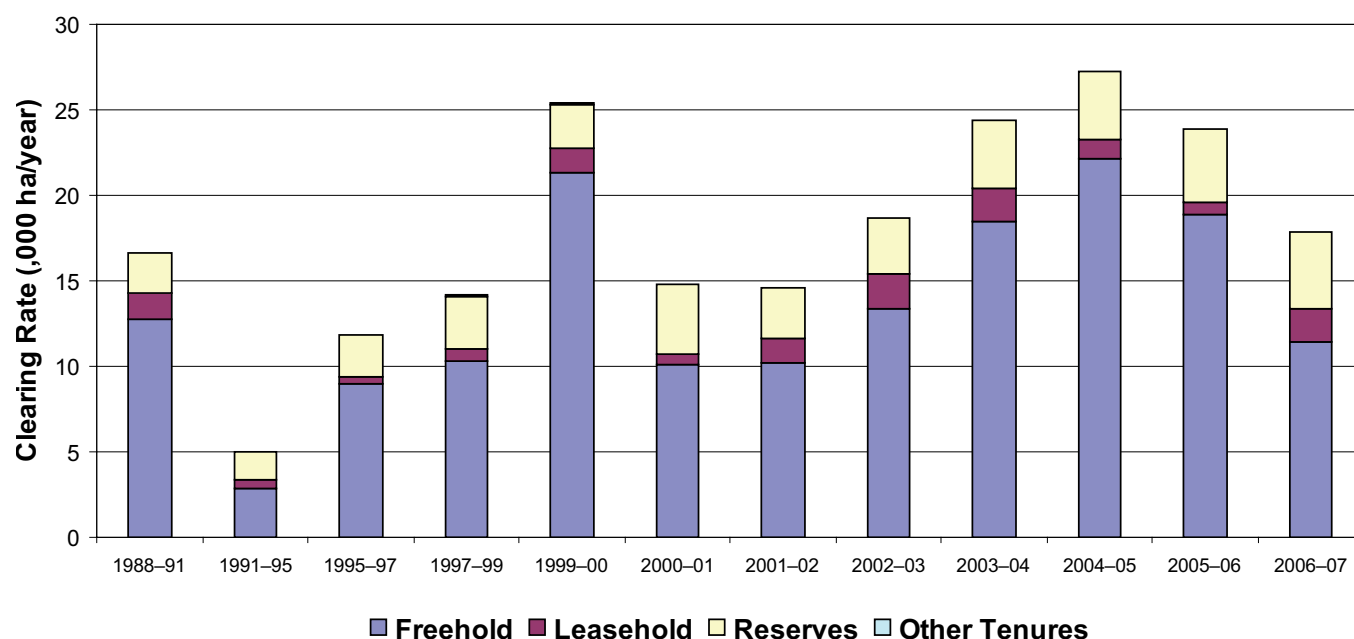


Figure 3. Woody vegetation clearing rates in the Burnett-Mary Natural Resource Management region by tenure.

Woody vegetation clearing by subcatchment

Table 3. Woody vegetation clearing rates in the Burnett-Mary Natural Resource Management region by subcatchment #.

Period	Woody vegetation clearing rate (,oooha/yr) for							
	Baffle Creek	Barker and Barambah Creek	Boyne and Auburn Rivers	Boyne River	Burrum River	Elloitt River	Fraser Island	Gregory River
2006-07	1.762	0.596	5.322	0.176	0.617	0.292	0.006	0.404

Table 3. continued

Period	Woody vegetation clearing rate (,oooha/yr) for							
	Isis River	Kolan River	Lower Burnett River	Lower Mary River	Noosa River	Upper Burnett River	Upper Mary River	Total
2006-07	0.436	0.556	0.396	4.353	0.556	2.053	0.334	17.857

Please refer to Figure 26 of the main report (NRW, 2008) for the location of each subcatchment.

Remaining woody vegetation

Table 4. Remaining woody vegetation in the Burnett-Mary Natural Resource Management region by subcatchment.

	Baffle Creek	Barker and Barambah Creek	Boyne and Auburn Rivers	Boyne River	Burrum River	Elloitt River	Fraser River	Gregory River
Catchment area (,000 ha)	399	594	1299	9	121	71	166	91
Area woody 2006 V2.3 (,000 ha)	338	359	844	7	110	44	158	70
% of catchment woody in 2006	85	60	65	80	91	62	95	76

Table 4. continued

	Isis River	Kolan River	Lower Burnett River	Lower Mary River	Noosa River	Upper Burnett River	Upper Mary River	Total
Catchment area (,000 ha)	53	290	569	676	98	860	271	5574
Area woody 2006 V2.3 (,000 ha)	47	225	345	511	92	566	215	3937
% of catchment woody in 2006	89	78	61	76	94	66	79	71

Woody vegetation clearing by replacement land cover

Table 5. Woody vegetation clearing rates in the Burnett-Mary Natural Resource Management region by replacement land cover.

Period	Woody vegetation clearing rate (,oooha/yr) for						
	Pasture	Crop	Forestry	Mining	Infrastructure	Settlement	Total*
1988-91	11.638	1.968	2.020	0.033	0.622	0.411	16.692
1991-95	2.647	0.402	1.597	0.054	0.124	0.161	4.986
1995-97	6.214	2.486	2.488	0.114	0.155	0.371	11.828
1997-99	8.278	1.719	3.111	0.030	0.876	0.132	14.145
1999-00	21.117	0.919	2.428	0.066	0.571	0.259	25.359
2000-01	9.622	0.364	4.007	0.144	0.322	0.322	14.781
2001-02	11.161	0.100	2.888	0.115	0.167	0.137	14.568
2002-03	14.884	0.162	3.199	0.051	0.128	0.252	18.675
2003-04	22.562	0.023	1.449	0.161	0.113	0.059	24.367
2004-05	21.866	0.063	4.676	0.186	0.230	0.211	27.231
2005-06	18.324	0.047	5.266	0.127	0.062	0.096	23.923
2006-07	13.317	0.068	4.105	0.067	0.099	0.201	17.857