



Land cover change in the Burdekin Natural Resource Management region

2006-07

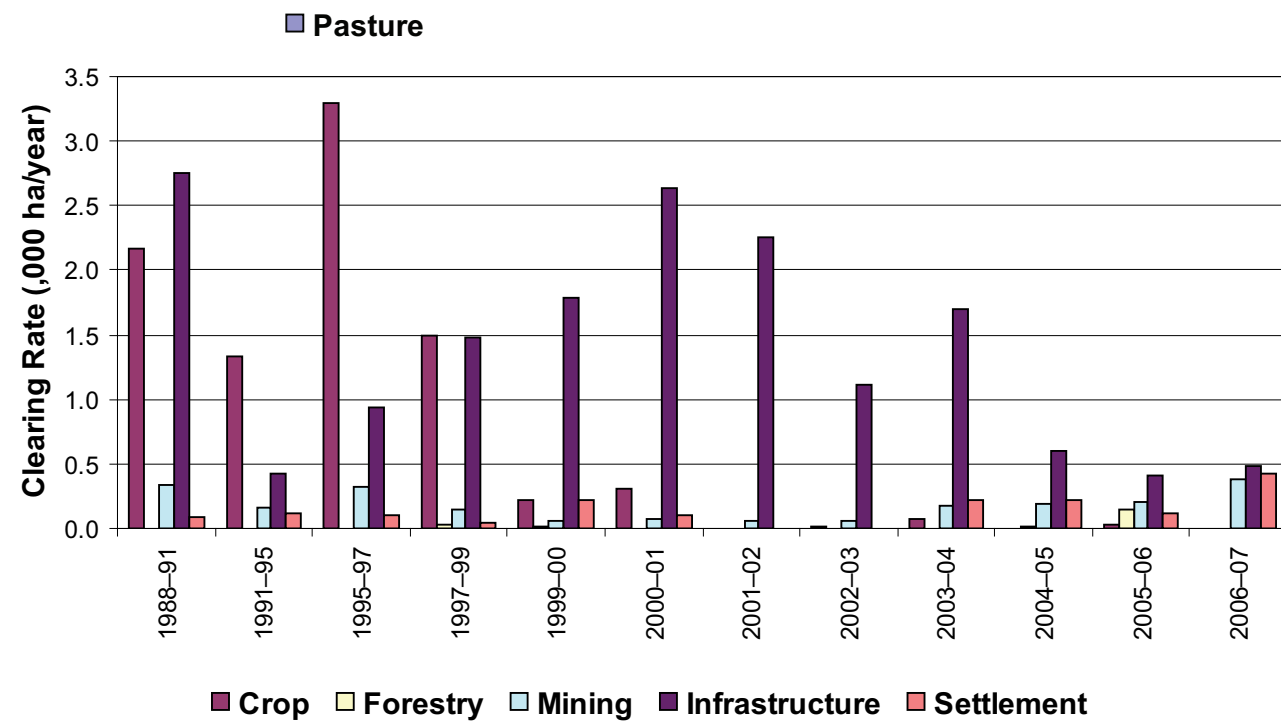
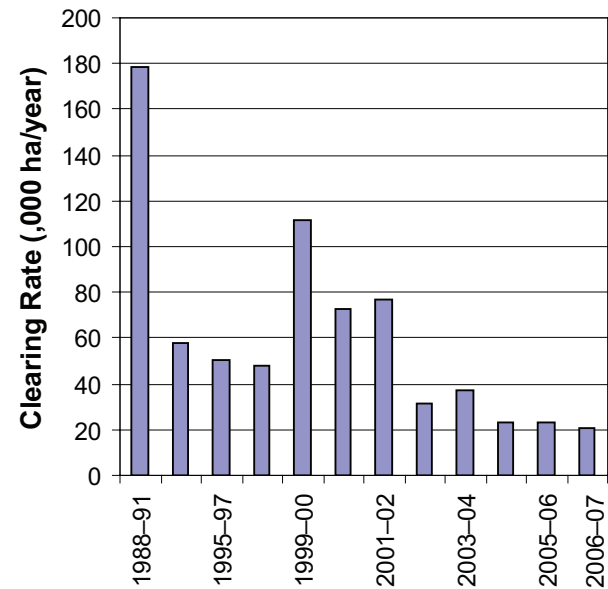


Figure 4. Woody vegetation clearing rates in the Burdekin Natural Resource Management region by replacement land cover.

This fact sheet is 2 of 14 in a series detailing land cover change in Queensland's Natural Resource Management regions. These fact sheets are addenda to the report: Department of Natural Resources and Water (2008). *Land cover change in Queensland 2006-07: a Statewide Landcover and Trees Study (SLATS) Report*, Dec, 2008. Department of Natural Resources and Water, Brisbane.

Please refer to this report for further background, methods and explanatory notes.

The Queensland Government supports and encourages the dissemination and exchange of information. However, copyright protects this document. The State of Queensland has no objection to this material being reproduced, made available online or electronically, provided it is for your personal, non-commercial use, or use within your organisation; the material remains unaltered; and the State of Queensland is recognised as the owner.

© The State of Queensland 2008.

For further information:
Statewide Landcover and Trees Study
80 Meiers Road
Indooroopilly QLD 4068
Phone: 61 7 3896 9605
Email: nrscdatacoordinator@nrw.qld.gov.au

www.nrw.qld.gov.au/slats



#28780

Summary

The 2006-07 period saw the lowest measured woody vegetation clearing rate of 22 057 hectares per year (ha/yr) in the Burdekin region, since satellite monitoring began.

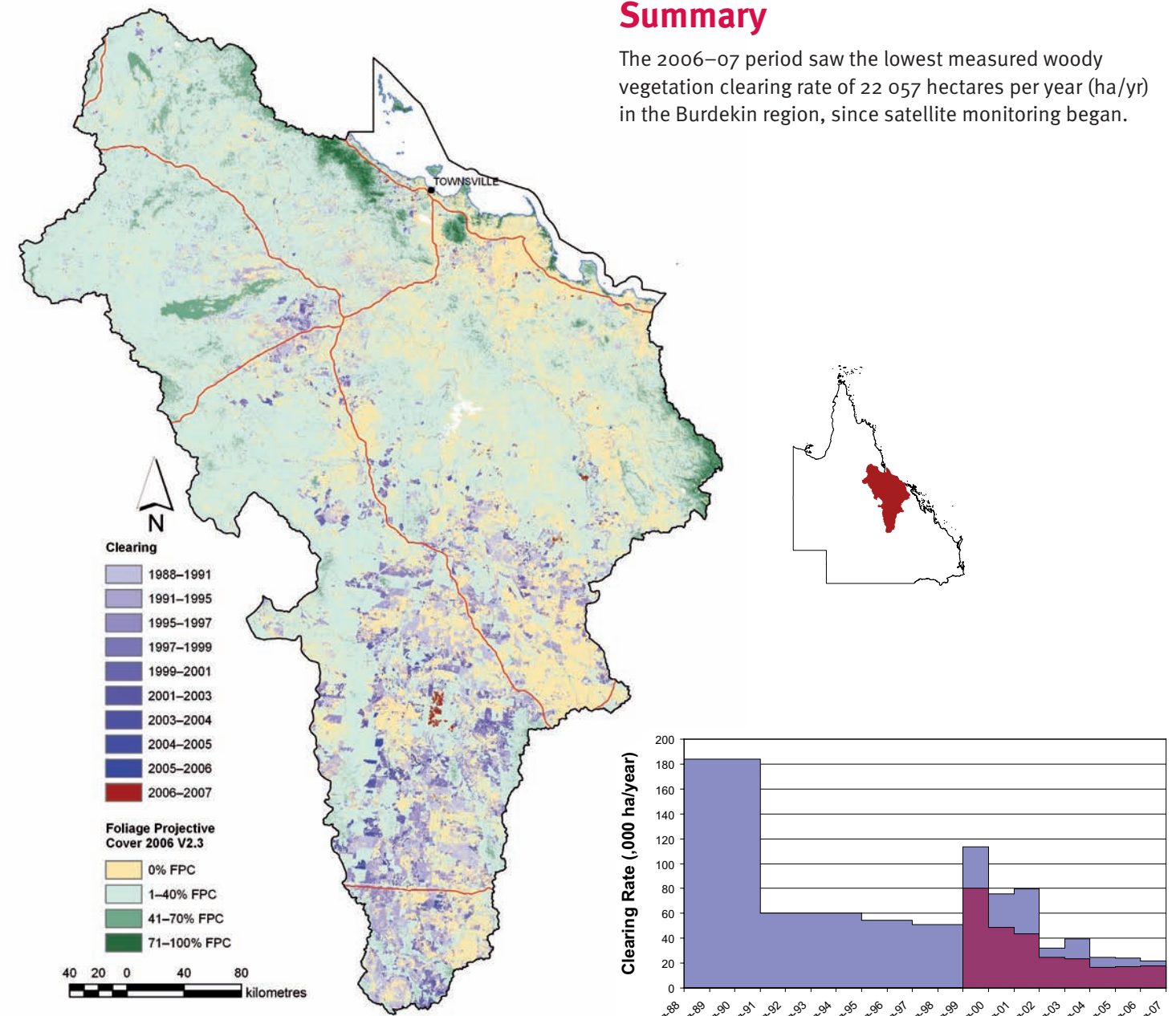


Figure 1. Woody vegetation clearing for each change period.

Figure 2. Woody vegetation clearing rates in the Burdekin Natural Resource Management region.

Woody vegetation clearing by remnant status

Table 1. Remnant and non-remnant woody vegetation clearing rates in the Burdekin Natural Resource Management region.

Period	Woody vegetation clearing rate (,oooha/yr) of		
	Non-remnant woody	Remnant woody*	Total woody
1999-00	33.557	80.086	113.642
2000-01	26.807	48.933	75.739
2001-02	35.783	43.840	79.622
2002-03	7.821	24.523	32.344
2003-04	16.091	23.679	39.770
2004-05	7.985	16.554	24.539
2005-06	6.423	17.468	23.891
2006-07	4.228	17.829	22.057

* Regional ecosystem remnant mapping prior to 1999 not used in this analysis.

Woody vegetation clearing by tenure

Table 2. Woody vegetation clearing rates in the Burdekin Natural Resource Management region by tenure.

Period	Woody vegetation clearing rate (,oooha/yr) on				
	Freehold	Leasehold	Reserves	Other tenures	Total
1988-91	36.812	146.770	0.167	0.414	184.163
1991-95	12.932	47.020	0.015	0.087	60.054
1995-97	12.762	41.575	0.047	0.264	54.649
1997-99	10.722	39.573	0.023	0.765	51.082
1999-00	25.134	88.417	0.064	0.028	113.642
2000-01	5.860	69.865	0.008	0.006	75.739
2001-02	8.468	71.072	0.032	0.051	79.622
2002-03	3.440	28.887	0.010	0.006	32.344
2003-04	5.961	33.662	0.041	0.106	39.770
2004-05	3.619	20.867	0.052	0.001	24.539
2005-06	4.677	19.159	0.051	0.004	23.891
2006-07	3.325	18.710	0.017	0.005	22.057

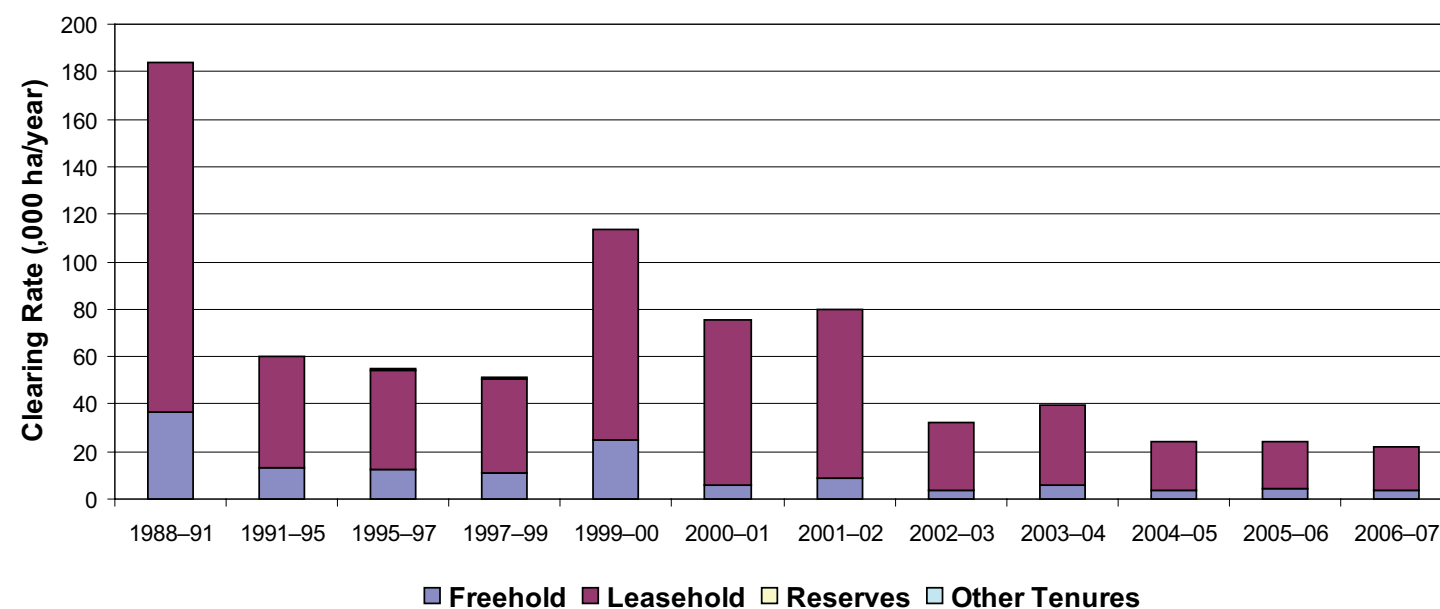


Figure 3. Woody vegetation clearing rates in the Burdekin Natural Resource Management region by tenure.

Woody vegetation clearing by subcatchment

Table 3. Woody vegetation clearing rates in the Burdekin Natural Resource Management region by subcatchment #.

Period	Woody vegetation clearing rate (,oooha/yr) for				
	Barratta Creek	Black River	Bohle River	Bowen River	Don River
2006-07	0.012	0.829	0.451	1.418	0.205

Table 3. continued

Period	Woody vegetation clearing rate (,oooha/yr) for					
	Haughton River	Lower Burdekin River	Ross River	Suttor River	Upper Burdekin River	Total
2006-07	0.298	0.837	0.139	16.457	1.411	22.057

Please refer to Figure 26 of the main report (NRW, 2008) for the location of each subcatchment.

Remaining woody vegetation

Table 4. Remaining woody vegetation in the Burdekin Natural Resource Management region by subcatchment.

	Barratta Creek	Black River	Bohle River	Bowen River	Don River
Catchment area (,000 ha)	183	106	37	945	369
Area woody 2006 V2.3 (,000 ha)	62	96	23	671	211
% of catchment woody in 2006	34	91	64	71	57

Table 4. continued

	Haughton River	Lower Burdekin River	Ross River	Suttor River	Upper Burdekin River	Total
Catchment area (,000 ha)	222	1047	134	7395	3625	14079
Area woody 2006 V2.3 (,000 ha)	139	662	87	4493	3240	9700
% of catchment woody in 2006	62	63	65	61	89	69

Woody vegetation clearing by replacement land cover

Table 5. Woody vegetation clearing rates in the Burdekin Natural Resource Management region by replacement land cover.

Period	Woody vegetation clearing rate (,oooha/yr) for						
	Pasture	Crop	Forestry	Mining	Infrastructure	Settlement	Total*
1988-91	178.877	2.170	0.000	0.335	2.756	0.091	184.229
1991-95	58.008	1.335	0.007	0.162	0.431	0.112	60.055
1995-97	50.011	3.288	0.001	0.321	0.941	0.096	54.658
1997-99	47.893	1.490	0.033	0.139	1.478	0.050	51.083
1999-00	111.344	0.218	0.009	0.059	1.791	0.221	113.642
2000-01	72.627	0.309	0.004	0.067	2.636	0.096	75.739
2001-02	77.296	0.002	0.000	0.065	2.256	0.002	79.622
2002-03	31.159	0.019	0.000	0.053	1.113	0.000	32.344
2003-04	37.590	0.080	0.000	0.182	1.704	0.214	39.770
2004-05	23.506	0.000	0.019	0.193	0.598	0.223	24.539
2005-06	22.982	0.033	0.140	0.208	0.407	0.120	23.891
2006-07	20.770	0.002	0.000	0.384	0.482	0.419	22.057

* total excludes natural tree death