



## Land cover change in the Border Rivers Natural Resource Management region

2006-07

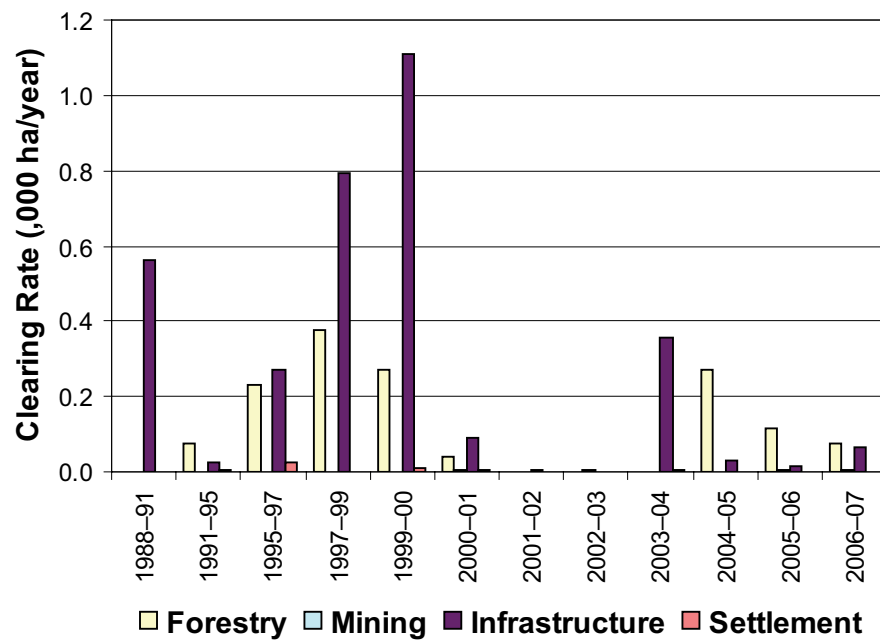
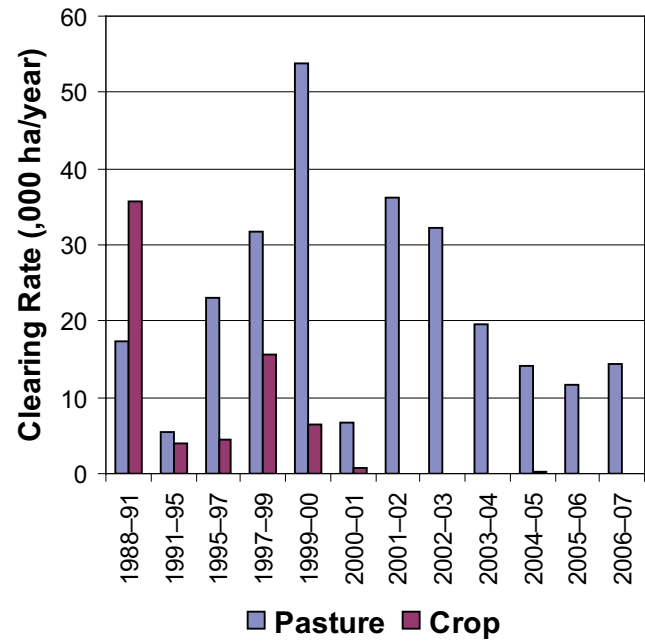


Figure 4. Woody vegetation clearing rates in the Border Rivers Natural Resource Management region by replacement land cover.

This fact sheet is 1 of 14 in a series detailing land cover change in Queensland's Natural Resource Management regions. These fact sheets are addenda to the report: Department of Natural Resources and Water (2008). *Land cover change in Queensland 2006-07: a Statewide Landcover and Trees Study (SLATS) Report*, Dec, 2008. Department of Natural Resources and Water, Brisbane.

Please refer to this report for further background, methods and explanatory notes. The Queensland Government supports and encourages the dissemination and exchange of information. However, copyright protects this document. The State of Queensland has no objection to this material being reproduced, made available online or electronically, provided it is for your personal, non-commercial use, or use within your organisation; the material remains unaltered; and the State of Queensland is recognised as the owner.

© The State of Queensland 2008.

For further information:  
Statewide Landcover and Trees Study  
80 Meiers Road  
Indooroopilly QLD 4068  
Phone: 61 7 3896 9605  
Email: nrsdatacoordinator@nrw.qld.gov.au

[www.nrw.qld.gov.au/slats](http://www.nrw.qld.gov.au/slats)



#28780

### Summary

The 2006-07 period saw a slight increase in remnant woody vegetation clearing within the Border Rivers region. Remnant woody vegetation clearing accounted for 25% of all woody vegetation clearing within the region.

The woody vegetation clearing rate for the Border Rivers region in 2006-07 was 14 569 hectares per year (ha/yr).

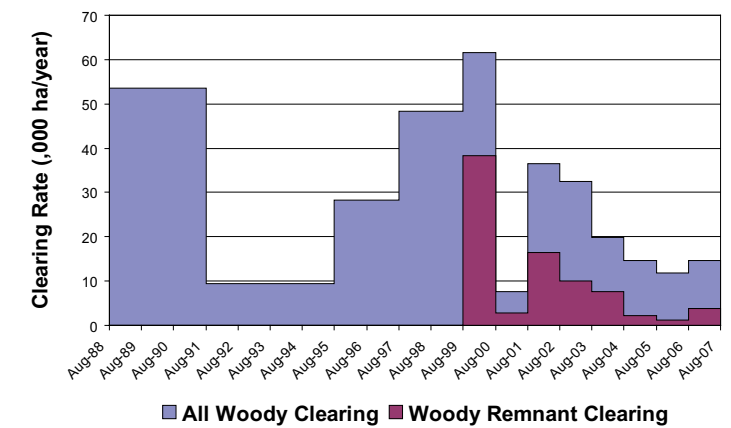


Figure 1. Woody vegetation clearing rates in the Border Rivers Natural Resource Management region.

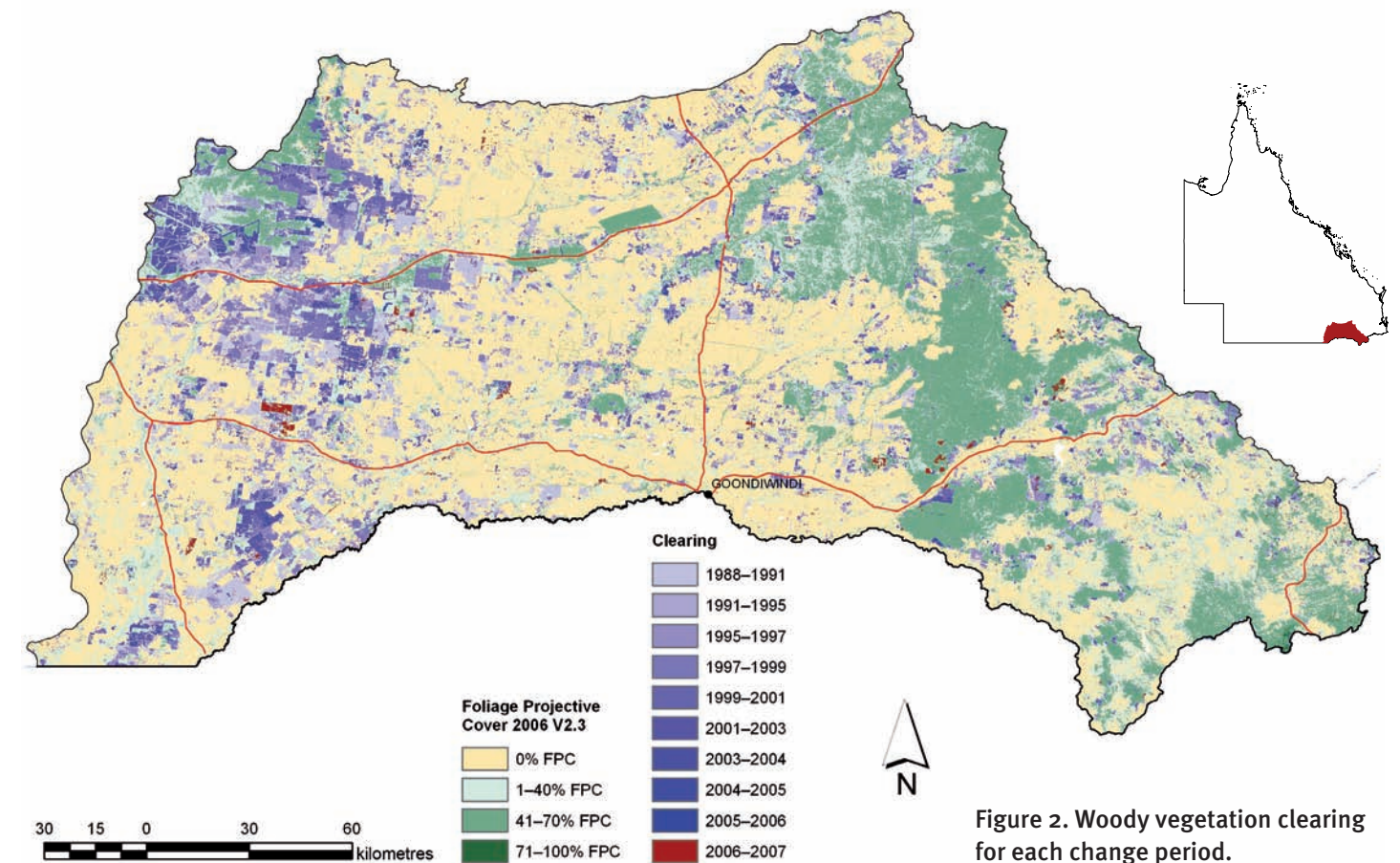


Figure 2. Woody vegetation clearing for each change period.

## Woody vegetation clearing by remnant status

Table 1. Remnant and non-remnant woody clearing rates in the Border Rivers Natural Resource Management region.

Period	Woody vegetation clearing rate (,000ha/yr) of		
	Non-remnant woody	Remnant woody*	Total woody
1999-00	23.165	38.377	61.542
2000-01	4.920	2.739	7.658
2001-02	20.094	16.377	36.471
2002-03	22.432	10.105	32.536
2003-04	12.352	7.572	19.925
2004-05	12.417	2.252	14.669
2005-06	10.675	1.189	11.864
2006-07	10.856	3.712	14.569

\* Regional ecosystem remnant mapping prior to 1999 not used in this analysis.

## Woody vegetation clearing by tenure

Table 2. Woody vegetation clearing rates in the Border Rivers Natural Resource Management region by tenure.

Period	Woody vegetation clearing rate (,000ha/yr) on				
	Freehold	Leasehold	Reserves	Other tenures	Total
1988-91	43.817	9.208	0.191	0.273	53.488
1991-95	8.060	1.363	0.064	0.017	9.504
1995-97	24.036	3.849	0.244	0.087	28.217
1997-99	40.623	7.174	0.495	0.030	48.323
1999-00	58.762	2.412	0.366	0.000	61.540
2000-01	7.337	0.258	0.053	0.000	7.648
2001-02	34.447	1.915	0.107	0.000	36.469
2002-03	30.732	1.484	0.318	0.000	32.534
2003-04	18.785	0.881	0.256	0.000	19.922
2004-05	12.772	1.632	0.265	0.000	14.669
2005-06	10.990	0.753	0.121	0.000	11.865
2006-07	13.304	0.885	0.380	0.000	14.569

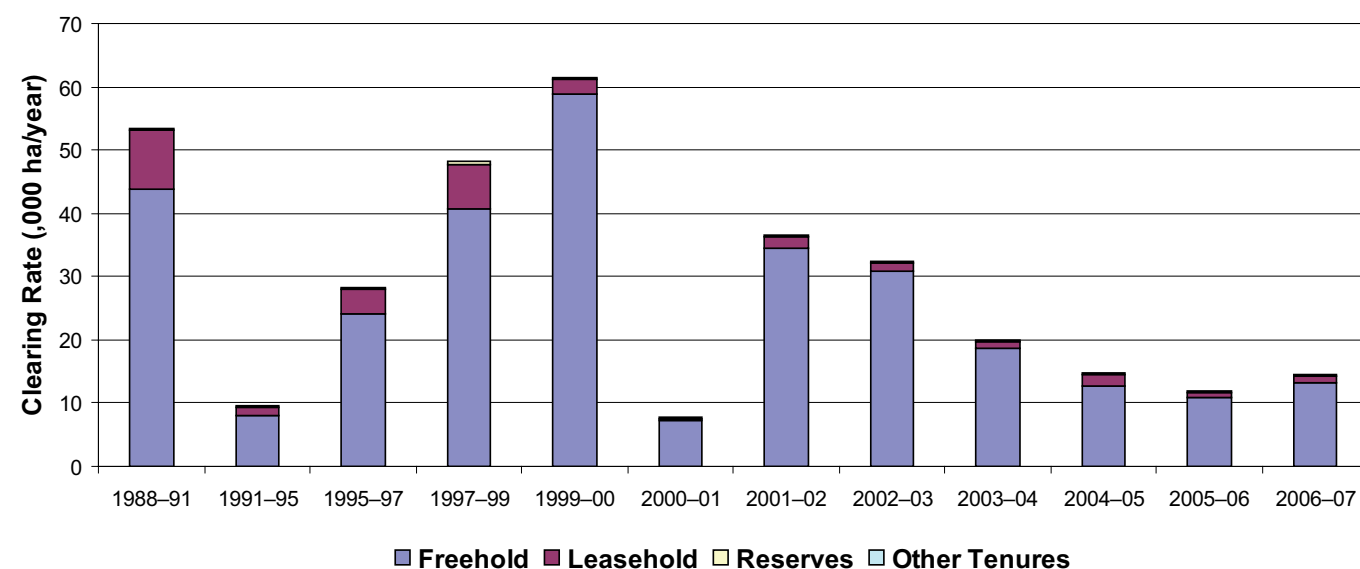


Figure 3. Woody vegetation clearing rates in the Border Rivers Natural Resource Management region by tenure.

## Woody vegetation clearing by subcatchment

Table 3. Woody vegetation clearing rates in the Border Rivers Natural Resource Management region by subcatchment #.

Period	Woody vegetation clearing rate (,000ha/yr) for				
	Dumaresq River	Macintyre and Weir Rivers	Macintyre Brook	Moonie River	Total
2006-07	0.787	2.672	3.699	7.410	14.569

# Please refer to Figure 26 of the main report (NRW, 2008) for the location of each subcatchment.

## Remaining woody vegetation

Table 4. Remaining woody vegetation in the Border Rivers Natural Resource Management region by subcatchment.

	Dumaresq River	Macintyre and Weir Rivers	Macintyre Brook	Moonie River	Total
Catchment area (,000 ha)	432	1541	432	1442	3847
Area woody 2006 V2.3 (,000 ha)	264	622	257	518	1660
% of catchment woody in 2006	61	40	59	36	43

## Woody vegetation clearing by replacement land cover

Table 5. Woody vegetation clearing rates in the Border Rivers Natural Resource Management region by replacement land cover.

Period	Woody vegetation clearing rate (,000ha/yr) for						
	Pasture	Crop	Forestry	Mining	Infrastructure	Settlement	Total*
1988-91	17.285	35.646	0.000	0.000	0.562	0.001	53.495
1991-95	5.493	3.904	0.077	0.000	0.026	0.006	9.506
1995-97	23.125	4.565	0.230	0.002	0.270	0.027	28.218
1997-99	31.638	15.517	0.377	0.000	0.796	0.000	48.327
1999-00	53.817	6.334	0.271	0.000	1.110	0.010	61.542
2000-01	6.718	0.794	0.042	0.007	0.093	0.005	7.658
2001-02	36.430	0.033	0.000	0.000	0.007	0.000	36.471
2002-03	32.533	0.000	0.000	0.003	0.000	0.000	32.536
2003-04	19.521	0.039	0.000	0.000	0.358	0.007	19.925
2004-05	14.047	0.321	0.271	0.000	0.031	0.000	14.669
2005-06	11.722	0.005	0.115	0.007	0.013	0.001	11.864
2006-07	14.412	0.010	0.075	0.005	0.065	0.002	14.569

\* total excludes natural tree death