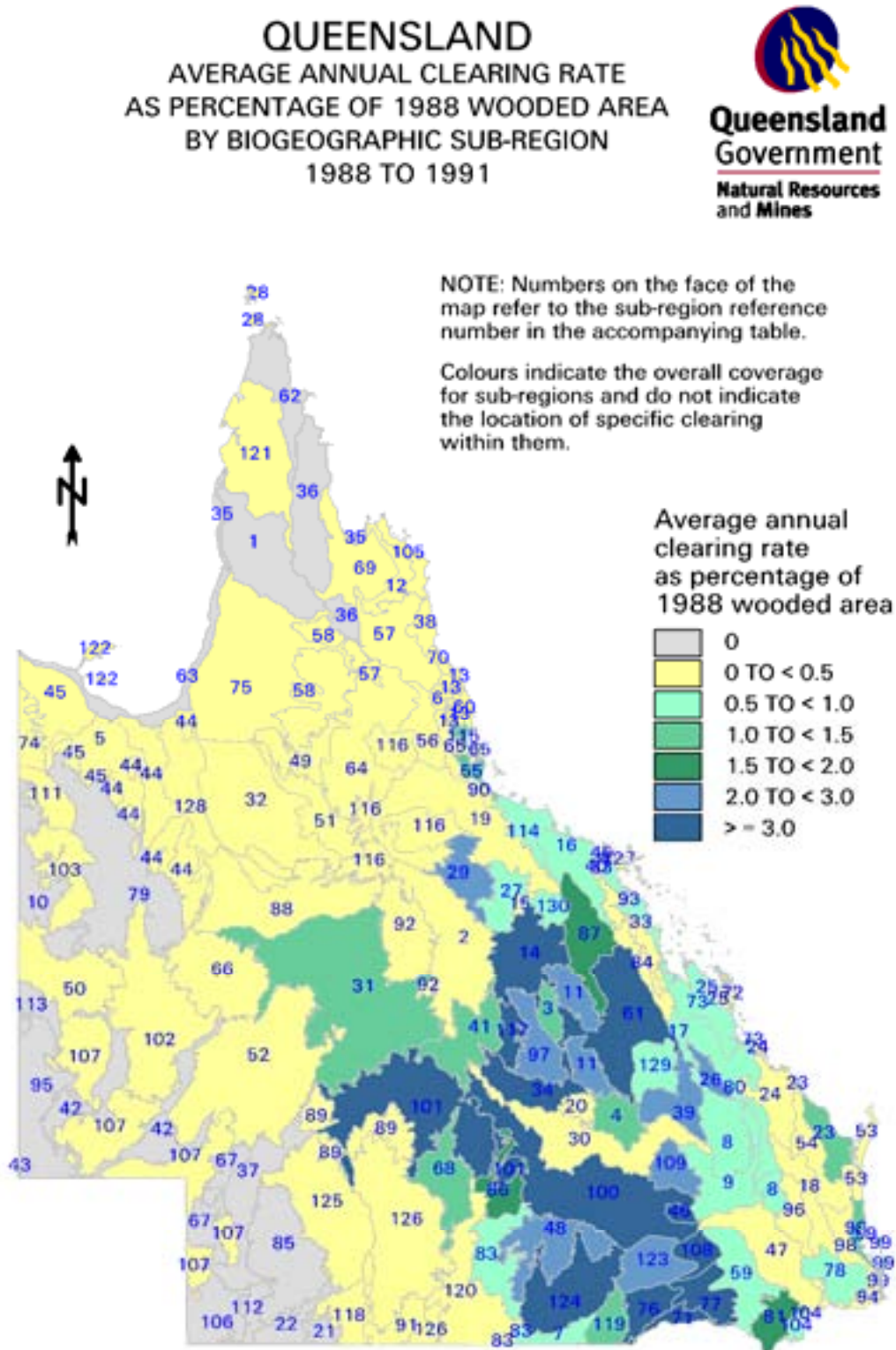


Woody Vegetation Change by Biogeographic Region and Sub-Region

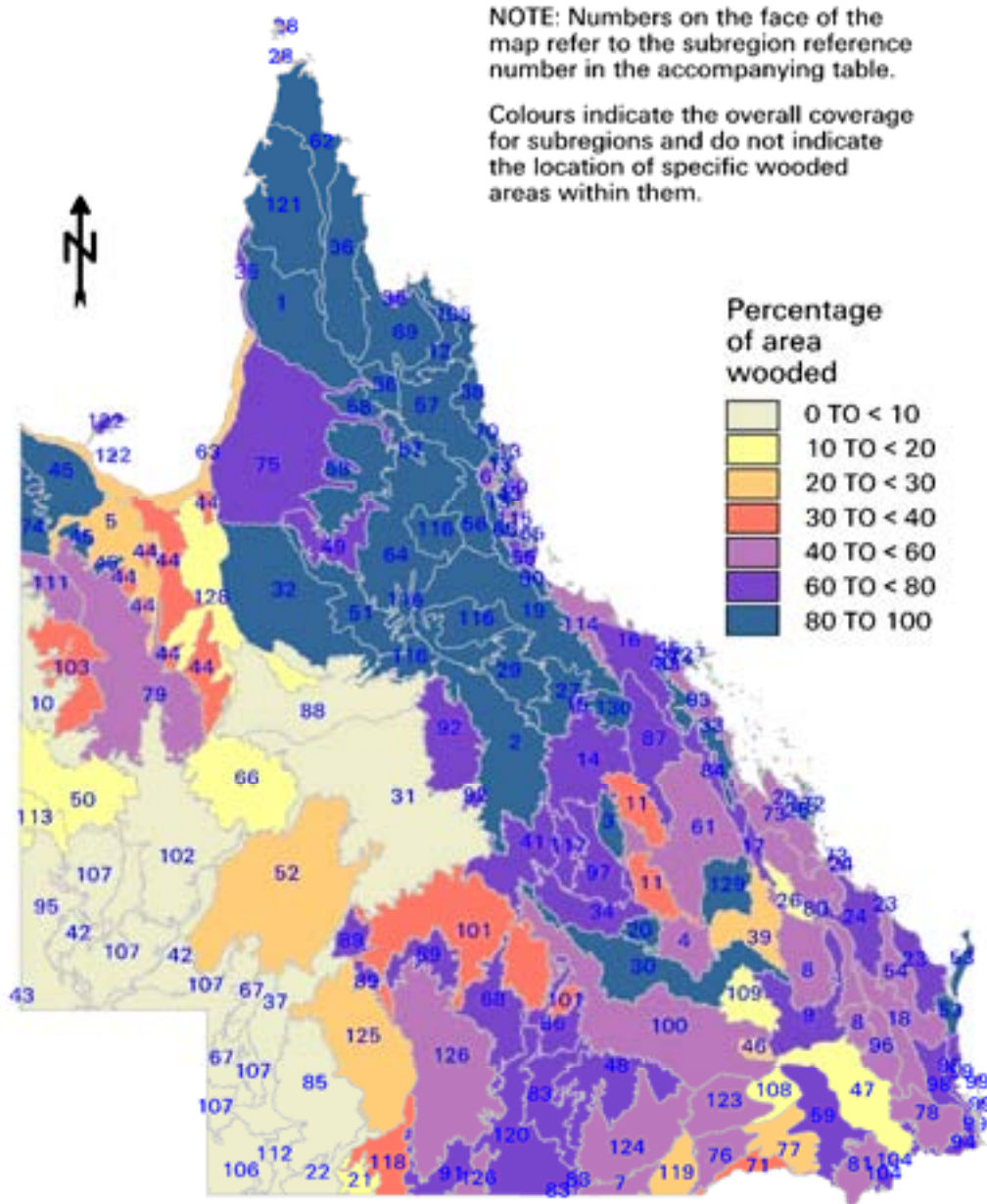


© The State of Queensland (Department of Natural Resources and Mines) 2003.

Figure 7: Average annual percentage of woody vegetation cleared by biogeographic sub-region (1988-1991)

QUEENSLAND PERCENTAGE OF AREA WOODED BY BIOGEOGRAPHIC SUBREGION

1988



BIOGEOGRAPHIC SUB-REGION

© The State of Queensland (Department of Natural Resources and Mines) 2003.

Figure 8: Woody vegetation cover by biogeographic sub-region (1988)

Table 3: 1988-1991 woody vegetation change by land cover by biogeographic region (See compilation notes on page 10)

Biogeographic region		Rate of woody vegetation change (,000ha per year)								% Wooded Vegetation Cover 1988	% Total clearing in QLD
Name	Area (,000ha)	New woody regrowth	Clearing by Replacement Landcover						Total Cleared		
			Pasture	Crops	Forest	Mining	Infra-structure	Settle-ment			
Brigalow Belt	36391	10.915	397.358	49.797	1.867	1.345	5.034	0.183	455.585	55.61	62.39
Channel Country	23187	0.000	1.918	0.000	0.000	0.001	0.092	0.000	2.012	8.34	0.28
Central Mackay Coast	1459	0.008	2.542	0.695	0.157	0.000	0.976	0.032	4.403	78.81	0.60
Cape York Peninsula	12117	0.000	1.050	0.000	0.000	0.564	1.306	0.002	2.922	93.01	0.40
Desert Uplands	6884	0.510	45.170	0.000	0.000	0.053	1.086	0.000	46.309	80.72	6.34
Einasliegh Uplands	11886	0.000	5.075	0.363	0.000	0.229	1.555	0.016	7.238	86.46	0.99
Gulf Uplands	21793	0.037	5.237	0.000	0.000	0.000	1.751	0.000	6.988	60.87	0.96
Mitchell Grass Downs	24319	0.042	53.965	0.000	0.000	0.000	0.365	0.000	54.329	12.72	7.44
Mulga Lands	18745	0.440	122.182	0.558	0.011	0.000	2.658	0.001	125.410	56.88	17.17
Northern New England Tablelands	775	0.101	5.251	0.006	0.049	0.000	0.161	0.001	5.469	46.31	0.75
North West Highlands	7232	0.005	0.008	0.000	0.000	0.004	0.124	0.000	0.136	50.92	0.02
South Eastern Queensland	6174	1.316	6.823	2.254	2.976	0.227	0.856	2.736	15.871	59.60	2.17
Wet Tropical Rainforest	1993	0.264	0.667	2.130	0.513	0.003	0.199	0.080	3.592	81.21	0.49

Table 4: 1988-1991 woody vegetation change by land cover by biogeographic sub-region (See compilation notes on page 10)

Biogeographic sub-region			Rate of woody vegetation change (,000ha per year)							Total Cleared	% Wooded vegetation cover 1988	% Total clearing in QLD
Name	Map Ref. No.	Total Area (,000ha)	New woody regrowth	Clearing by Replacement Landcover								
				Pasture	Crops	Forest	Mining	Infra-structure	Settle-ment			
(Northern) Holroyd Plain	1	2575	0.000	0.000	0.000	0.000	0.000	0.084	0.000	0.084	86.99	0.01
Alice Tableland	2	2864	0.042	6.827	0.000	0.000	0.000	0.212	0.000	7.039	88.21	0.96
Anakie Inlier	3	355	0.029	4.260	0.000	0.016	0.030	0.103	0.000	4.409	84.19	0.60
Arcadia	4	708	0.151	5.128	0.061	0.098	0.000	0.039	0.000	5.326	58.37	0.73
Armraynald Plain	5	1589	0.000	0.000	0.000	0.000	0.000	0.033	0.000	0.033	21.06	0.00
Atherton	6	168	0.000	0.131	0.007	0.004	0.000	0.007	0.047	0.195	57.69	0.03
Balonne - Culgoa Fan, Culgoa-Bokhara	7	368	0.000	0.284	1.000	0.000	0.000	0.195	0.000	1.478	45.35	0.20
Banana - Auburn Ranges	8	1535	0.126	7.078	0.000	0.123	0.002	0.071	0.000	7.274	48.95	1.00
Barakula	9	1296	0.014	6.521	1.113	0.384	0.001	0.095	0.001	8.116	65.81	1.11
Barkly Tableland, Mitchell Grass Downs P2 Barkly	10	1662	0.000	0.000	0.000	0.000	0.000	0.000	0.000	0.000	3.64	0.00
Basalt Downs	11	1239	0.039	8.163	0.996	0.003	0.043	0.117	0.007	9.328	31.05	1.28
Battle Camp Sandstones	12	573	0.000	0.004	0.000	0.000	0.000	0.078	0.000	0.082	97.14	0.01
Bellenden Ker – Lamb	13	255	0.001	0.027	0.009	0.008	0.002	0.000	0.000	0.046	93.95	0.01
Belyando Downs	14	1786	0.282	75.314	0.468	0.014	0.000	0.370	0.000	76.165	61.58	10.43
Beucazon Hills	15	102	0.000	0.244	0.000	0.000	0.000	0.001	0.000	0.245	73.71	0.03
Bogie River Hills	16	1042	0.014	3.856	0.042	0.010	0.000	0.079	0.000	3.988	74.77	0.55
Boomer Range	17	211	0.007	1.139	0.000	0.000	0.000	0.008	0.000	1.147	66.73	0.16
Brisbane – Barambah Volcanics	18	807	0.003	0.130	0.000	0.078	0.000	0.013	0.000	0.221	42.88	0.03
Broken River	19	3276	0.000	2.803	0.014	0.000	0.125	0.492	0.000	3.434	86.66	0.47
Buckland Basalts	20	290	0.000	0.842	0.000	0.000	0.000	0.000	0.000	0.842	95.23	0.12
Bulloo Dunefields	21	325	0.000	0.000	0.000	0.000	0.000	0.000	0.000	0.000	10.21	0.00
Bulloo, Bulloo Overflow	22	618	0.000	0.000	0.000	0.000	0.000	0.000	0.000	0.000	5.75	0.00
Burnett - Curtis Coastal Lowlands	23	700	0.352	0.909	1.880	1.394	0.000	0.133	0.309	4.624	64.76	0.63
Burnett - Curtis Hills and Ranges	24	991	0.031	1.065	0.000	0.033	0.005	0.326	0.076	1.505	71.41	0.21
Byfield	25	120	0.000	0.135	0.000	0.075	0.000	0.006	0.000	0.216	94.30	0.03
Callide Creek Downs	26	298	0.000	1.144	0.000	0.146	0.029	0.008	0.000	1.327	19.10	0.18

Table 9 (continued): 1988-1991 woody vegetation change by land cover by biogeographic sub-region (See compilation notes on page 10)

Biogeographic sub-region			Rate of woody vegetation change (,000ha per year)							Total Cleared	% Wooded vegetation cover 1988	% Total clearing in QLD
Name	Map Ref. No.	Total Area (,000ha)	New woody regrowth	Clearing by Replacement Landcover								
				Pasture	Crops	Forest	Mining	Infra-structure	Settle-ment			
Cape River Hills	27	743	0.002	3.427	0.000	0.000	0.008	0.118	0.000	3.553	84.54	0.49
Cape York – Torres Strait	28	68	0.000	0.017	0.000	0.000	0.000	0.020	0.000	0.037	48.03	0.01
Cape Campaspe Plains	29	1006	0.193	20.057	0.000	0.000	0.053	0.541	0.000	20.651	84.55	2.83
Carnarvon Ranges	30	2293	2.228	8.788	0.000	0.249	0.000	0.648	0.001	9.686	89.44	1.33
Central Downs	31	6887	0.000	7.133	0.000	0.000	0.000	0.180	0.000	7.312	8.63	1.00
Claraville Plains	32	3790	0.002	1.080	0.000	0.000	0.000	0.365	0.000	1.444	80.01	0.20
Clarke - Connors Ranges	33	629	0.001	0.331	0.069	0.005	0.000	0.095	0.000	0.500	94.19	0.07
Claude River Downs	34	1044	0.158	35.114	0.000	0.001	0.000	0.270	0.000	35.385	76.22	4.85
Coastal Plains	35	262	0.000	0.000	0.000	0.000	0.000	0.001	0.000	0.001	63.25	0.00
Coen - Yamba Inlier (North & South)	36	2395	0.000	0.004	0.000	0.000	0.000	0.035	0.000	0.039	95.99	0.01
Cooper Plains	37	1844	0.000	0.001	0.000	0.000	0.000	0.001	0.000	0.002	3.16	0.00
Daintree – Bloomfield	38	360	0.000	0.112	0.016	0.002	0.000	0.024	0.000	0.154	95.52	0.02
Dawson River Downs	39	988	0.054	5.208	0.000	0.000	0.071	0.025	0.000	5.304	24.39	0.73
Debella	40	80	0.004	0.702	0.022	0.000	0.000	0.815	0.000	1.539	73.26	0.21
DEU4 (new subregion)	41	1434	0.254	13.144	0.000	0.000	0.000	0.214	0.000	13.357	77.15	1.83
Diamantina-Eyre, Diamantina Plains	42	2443	0.000	0.000	0.000	0.000	0.000	0.000	0.000	0.000	5.15	0.00
Dieri	43	13	0.000	0.000	0.000	0.000	0.000	0.000	0.000	0.000	0.29	0.00
Donors Plateau	44	2450	0.000	3.167	0.000	0.000	0.000	0.068	0.000	3.235	31.21	0.44
Doomadgee Plains, Gulf Plains	45	1684	0.000	0.012	0.000	0.000	0.000	0.430	0.000	0.442	89.65	0.06
Dulacca Downs	46	162	0.012	1.308	0.129	0.000	0.000	0.010	0.000	1.447	29.54	0.20
Eastern Darling Downs	47	1646	0.003	0.585	0.555	0.000	0.002	0.031	0.001	1.173	17.00	0.16
Eastern Mulga Plains	48	1559	0.159	26.729	0.000	0.000	0.000	0.412	0.000	27.141	73.60	3.72
Georgetown - Croydon	49	914	0.000	0.001	0.000	0.000	0.000	0.046	0.000	0.048	77.94	0.01
Georgina Limestone	50	2043	0.000	0.042	0.000	0.000	0.000	0.004	0.000	0.046	14.90	0.01
Gilberton Plateau	51	1316	0.000	0.008	0.000	0.000	0.000	0.067	0.000	0.075	92.61	0.01

Table 9 (continued): 1988-1991 woody vegetation change by land cover by biogeographic sub-region (See compilation notes on page 10)

Biogeographic sub-region			Rate of woody vegetation change (,000ha per year)								% Wooded vegetation cover 1988	% Total clearing in QLD
Name	Map Ref. No.	Total Area (,000ha)	New woody regrowth	Clearing by Replacement Landcover								
				Pasture	Crops	Forest	Mining	Infra-structure	Settle-ment	Total Cleared		
Goneaway Tablelands	52	5384	0.000	1.917	0.000	0.000	0.001	0.074	0.000	1.992	23.29	0.27
Great Sandy	53	357	0.307	0.121	0.029	0.420	0.000	0.023	0.006	0.598	91.15	0.08
Gympie Block	54	859	0.030	1.261	0.023	0.286	0.011	0.066	0.053	1.699	58.07	0.23
Herbert	55	230	0.110	0.168	1.011	0.236	0.000	0.029	0.002	1.445	61.09	0.20
Herberton - Wairuna	56	751	0.000	0.333	0.008	0.000	0.000	0.252	0.016	0.610	96.07	0.08
Hodgkinson Basin	57	1700	0.000	1.288	0.333	0.000	0.071	0.139	0.000	1.831	93.36	0.25
Holroyd Plain - Red Plateau	58	2208	0.000	0.045	0.000	0.000	0.000	0.189	0.000	0.234	86.52	0.03
Inglewood Sandstones	59	1233	0.186	6.697	0.863	0.059	0.000	0.326	0.000	7.945	66.29	1.09
Innisfail	60	202	0.014	0.081	0.143	0.000	0.001	0.017	0.021	0.263	47.54	0.04
Isaac - Comet Downs	61	2701	4.393	55.336	2.887	0.013	0.818	0.448	0.038	59.539	52.35	8.15
Jardine – Pascoe Sandstones	62	1426	0.000	0.000	0.000	0.000	0.000	0.028	0.000	0.028	95.33	0.00
Karumba Plain	63	1072	0.000	0.000	0.000	0.000	0.000	0.002	0.000	0.002	25.32	0.00
Kidston	64	2991	0.000	0.238	0.008	0.000	0.033	0.306	0.000	0.584	86.92	0.08
Kirrama – Hinchinbrook	65	268	0.001	0.026	0.002	0.004	0.000	0.001	0.003	0.036	98.61	0.00
Kynuna Plateau	66	2336	0.000	0.563	0.000	0.000	0.000	0.009	0.000	0.572	17.35	0.08
Lake Pure	67	985	0.000	0.000	0.000	0.000	0.000	0.000	0.000	0.000	1.21	0.00
Langlo Plains	68	1277	0.001	9.543	0.000	0.000	0.000	0.218	0.000	9.760	76.40	1.34
Laura Lowlands	69	1641	0.000	0.607	0.000	0.000	0.000	0.210	0.000	0.818	96.95	0.11
Macalister	70	116	0.014	0.060	0.126	0.128	0.000	0.005	0.005	0.325	90.30	0.04
Macintyre - Weir Fan, Castlereagh – Barwon	71	307	0.008	0.000	3.453	0.000	0.000	0.050	0.000	3.504	31.41	0.48
Manifold	72	71	0.000	0.011	0.000	0.072	0.000	0.001	0.032	0.115	81.67	0.02
Marlborough Plains	73	1152	0.037	3.056	0.080	0.000	0.008	0.197	0.028	3.369	55.10	0.46
McArthur - South Nicholson Basins, Gulf Fall and Uplands P1	74	591	0.000	0.000	0.000	0.000	0.000	0.061	0.000	0.061	84.50	0.01

Table 9 (continued): 1988-1991 woody vegetation change by land cover by biogeographic sub-region (See compilation notes on page 10)

Biogeographic sub-region			Rate of woody vegetation change (,000ha per year)								% Wooded vegetation cover 1988	% Total clearing in QLD
Name	Map Ref. No.	Total Area (,000ha)	New woody regrowth	Clearing by Replacement Landcover								
				Pasture	Crops	Forest	Mining	Infra-structure	Settle-ment	Total Cleared		
Mitchell - Gilbert Fans	75	5202	0.034	0.047	0.000	0.000	0.000	0.564	0.000	0.611	74.20	0.08
Moonie - Barwon Interfluve, Collarenebri Interfluve	76	649	0.015	1.187	19.900	0.000	0.000	0.081	0.000	21.168	46.95	2.90
Moonie R. - Commoron Ck Floodout	77	803	0.042	1.468	7.825	0.059	0.000	0.036	0.000	9.387	28.85	1.29
Moreton Basin	78	785	0.025	0.943	0.004	0.008	0.070	0.044	0.870	1.938	44.38	0.27
Mount Isa Inlier	79	4492	0.005	0.008	0.000	0.000	0.004	0.005	0.000	0.017	51.59	0.00
Mount Morgan Ranges	80	1294	0.016	3.025	0.000	0.092	0.031	0.106	0.017	3.272	47.13	0.45
Nandewar, Northern complex	81	629	0.085	4.865	0.004	0.009	0.000	0.109	0.000	4.988	42.04	0.68
Narran – Lightning Ridge	82	6	0.000	0.000	0.000	0.000	0.000	0.000	0.000	0.000	26.61	0.00
Nebine Plains, Block Range	83	1226	0.001	6.110	0.000	0.000	0.000	0.647	0.000	6.757	68.43	0.93
Nebo - Connors Ranges	84	532	0.035	1.534	0.020	0.001	0.000	0.033	0.000	1.589	63.75	0.22
Noccundra Slopes	85	2507	0.000	0.000	0.000	0.000	0.000	0.004	0.000	0.004	7.64	0.00
North Eastern Plains	86	670	0.062	9.723	0.000	0.000	0.000	0.239	0.000	9.962	75.72	1.36
Northern Bowen Basin	87	1338	0.861	12.875	0.021	0.002	0.286	0.272	0.000	13.456	63.41	1.84
Northern Downs	88	3534	0.000	0.301	0.000	0.000	0.000	0.012	0.000	0.314	6.22	0.04
Northern Uplands	89	1248	0.007	3.999	0.000	0.000	0.000	0.083	0.000	4.082	68.47	0.56
Paluma – Seaview	90	247	0.004	0.022	0.001	0.001	0.000	0.054	0.000	0.077	99.45	0.01
Paroo Sand Sheets, Cuttaburra – Paroo	91	663	0.000	0.321	0.000	0.000	0.000	0.101	0.000	0.422	72.81	0.06
Prairie - Torrens Creek Alluvials	92	1580	0.020	5.142	0.000	0.000	0.000	0.120	0.000	5.262	67.97	0.72
Proserpine - Sarina Lowlands	93	470	0.001	1.356	0.601	0.005	0.000	0.053	0.000	2.014	51.75	0.28
Scenic Rim	94	230	0.000	0.074	0.000	0.019	0.000	0.000	0.000	0.093	78.87	0.01
Simpson Desert, Simpson-Strzelecki Dunefields (nthwest), Simpson-Strzelecki	95	2296	0.000	0.000	0.000	0.000	0.000	0.000	0.000	0.000	3.05	0.00
South Burnett	96	564	0.050	0.884	0.000	0.259	0.022	0.029	0.001	1.194	43.02	0.16