



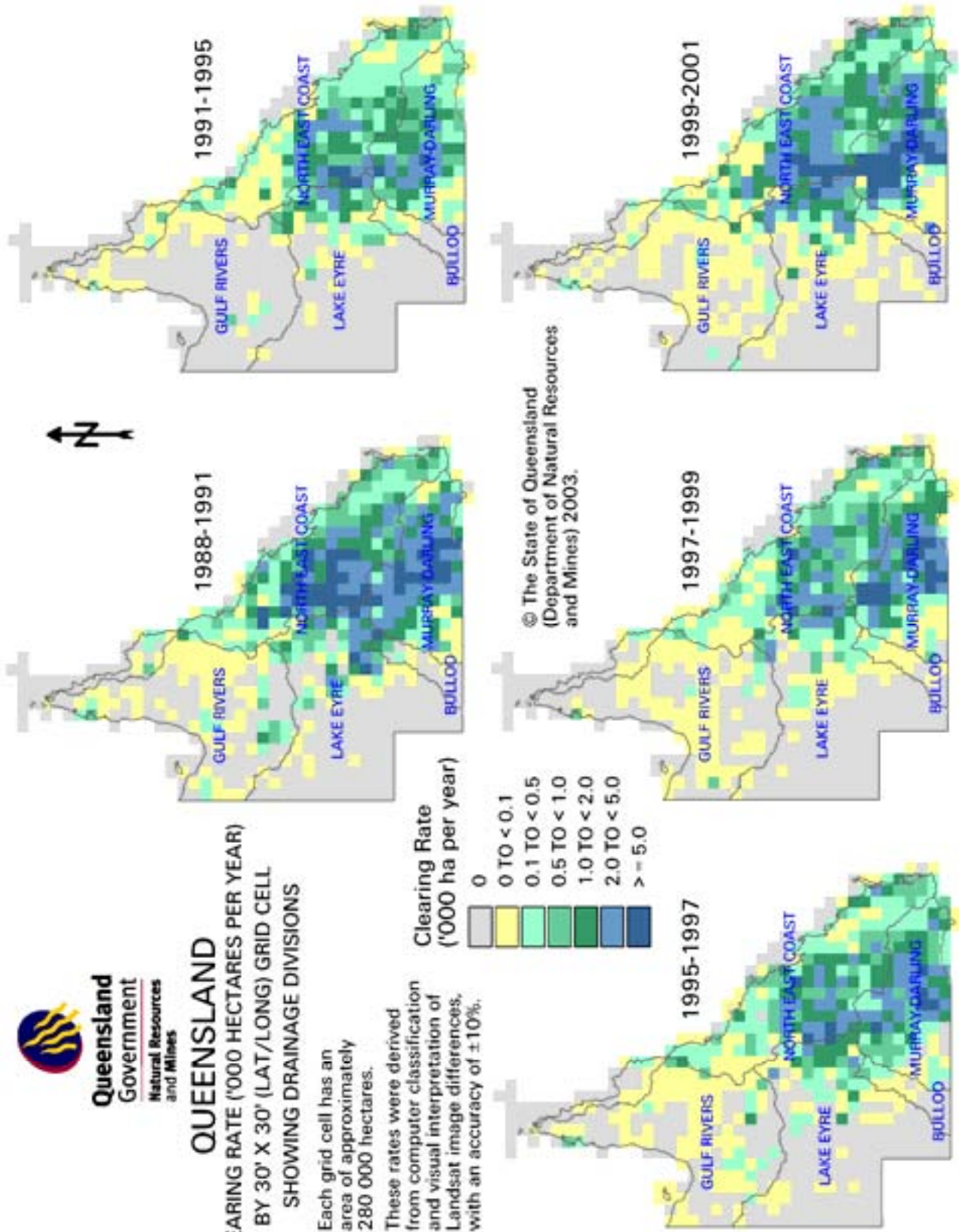
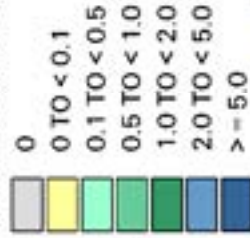
## QUEENSLAND

**CLEARING RATE ('000 HECTARES PER YEAR)  
BY 30' X 30' (LAT/LONG) GRID CELL  
SHOWING DRAINAGE DIVISIONS**

Each grid cell has an area of approximately 280 000 hectares.

These rates were derived from computer classification and visual interpretation of Landsat image differences, with an accuracy of  $\pm 10\%$ .

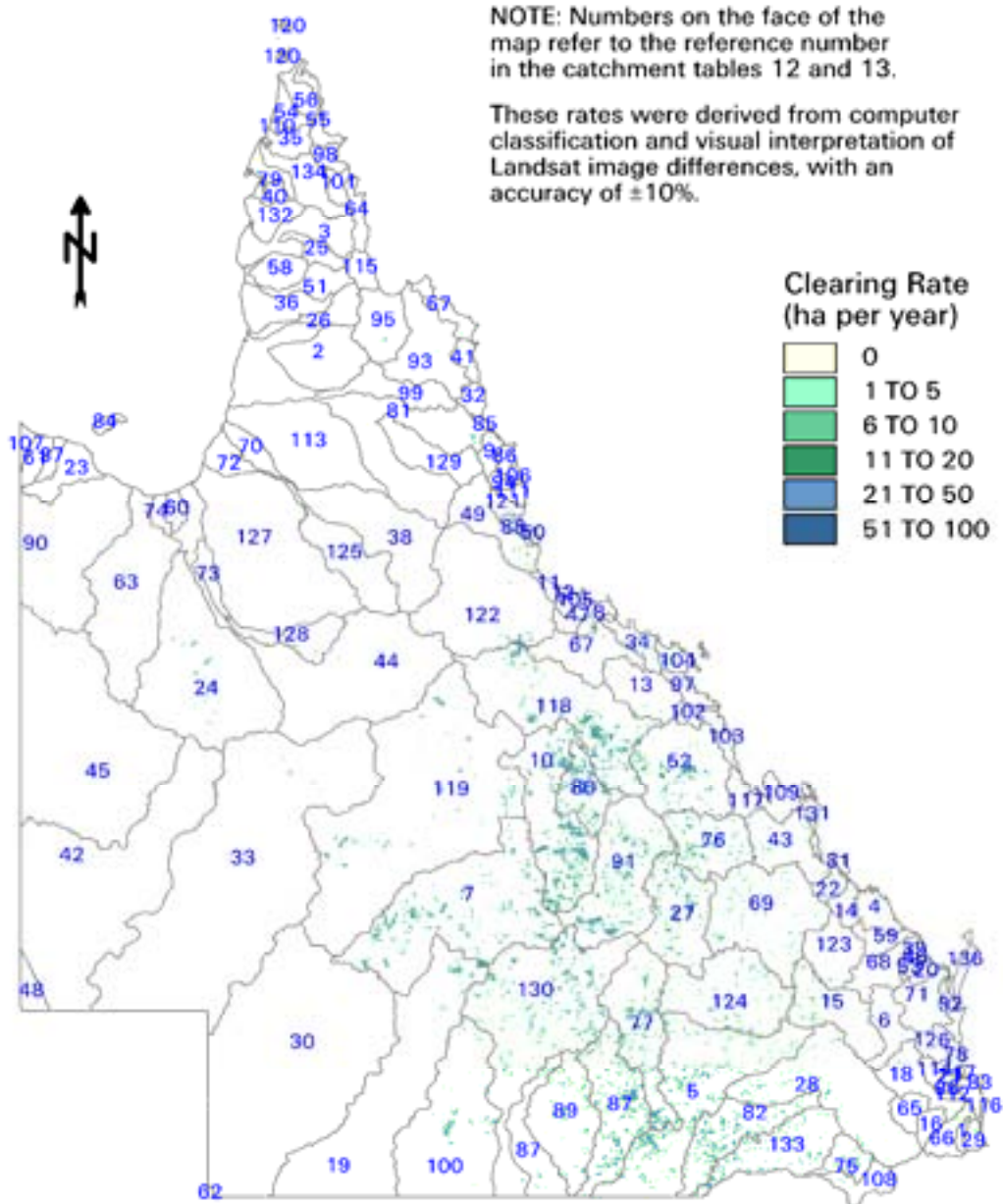
**Clearing Rate ('000 ha per year)**



© The State of Queensland (Department of Natural Resources and Mines) 2003.

Figure 3: Average annual clearing rate for all SLATS change periods 1988-2001

**QUEENSLAND**  
**ANNUAL CLEARING RATE (HECTARES PER YEAR)**  
**BY 1 KILOMETRE GRID CELL**  
**SHOWING CATCHMENTS**  
**1988-1991**



© The State of Queensland (Department of Natural Resources and Mines) 2003.

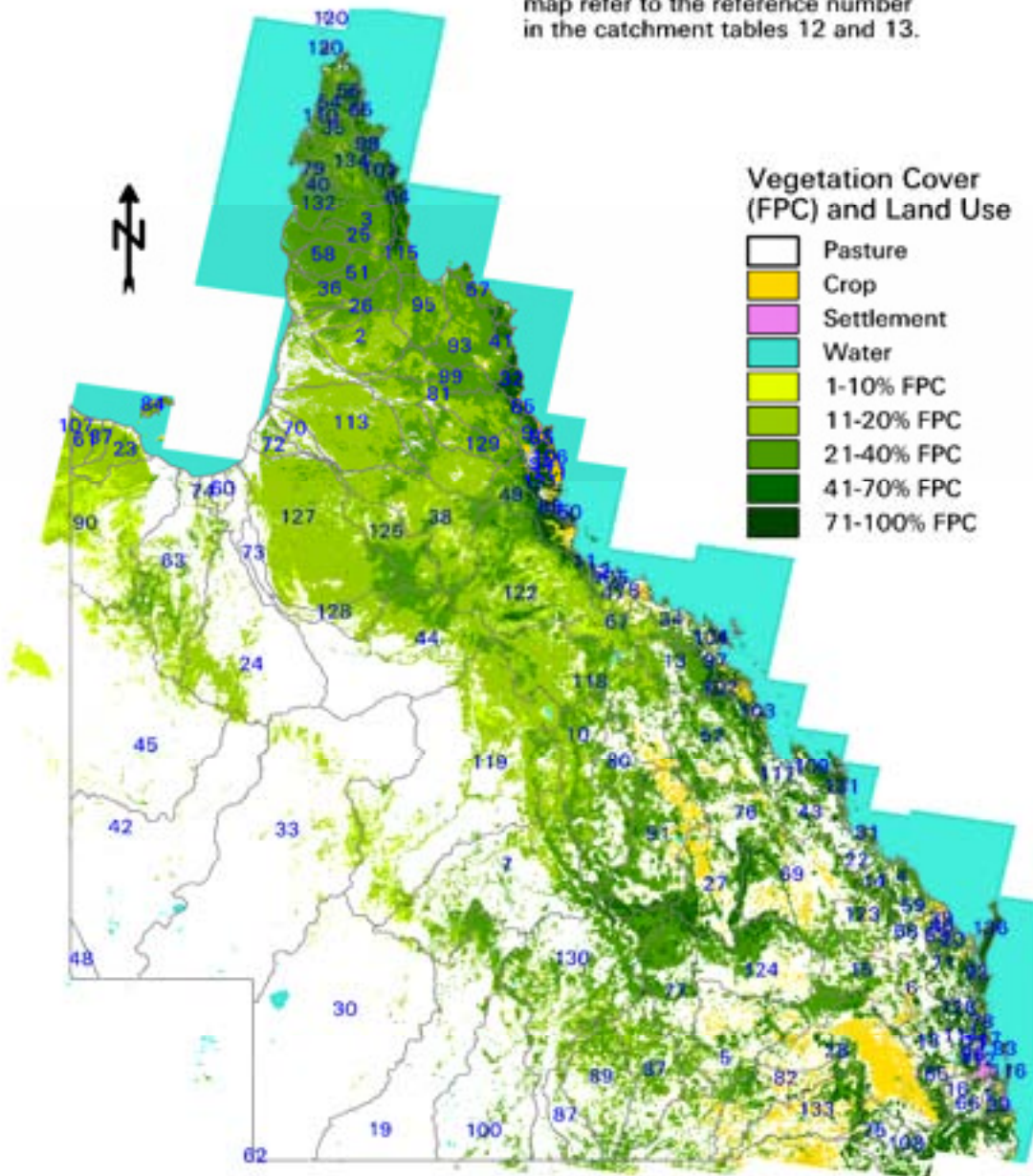
Figure 4: Average annual clearing rate (1988-1991) by 1 km grid cell

# QUEENSLAND VEGETATION COVER AND LAND USE SHOWING CATCHMENTS

1991



NOTE: Numbers on the face of the map refer to the reference number in the catchment tables 12 and 13.



© The State of Queensland (Department of Natural Resources and Mines) 2003.

Figure 5: Queensland woody vegetation cover and land use (1991)