

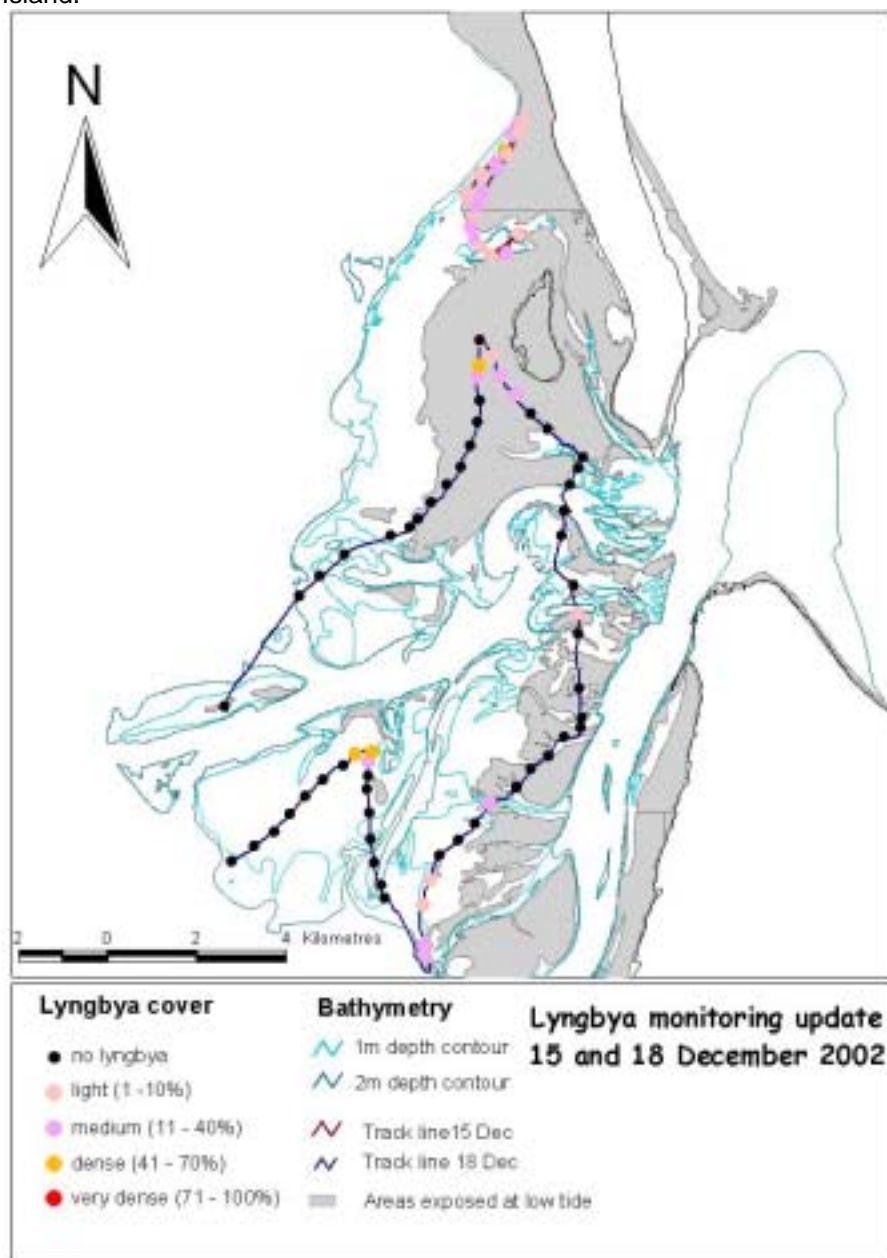
## 2002 archive

*15 December 2002*

The **Eastern Banks** were surveyed for the presence of Lyngbya on 15 and 18 December 2002. There has been a significant decrease in the distribution and abundance of Lyngbya throughout the eastern banks over the past two weeks. Most notably, Lyngbya has reduced significantly at the Maroom Bank and at **Horseshoe Bay** at Peel Island.

However, patches of isolated Lyngbya growth remain present at many places on the eastern banks, as indicated on the map below. The most significant of these is the northern section of the Moreton Banks, to the north of the Blue Hole, where Lyngbya is growing on sand and seagrass.

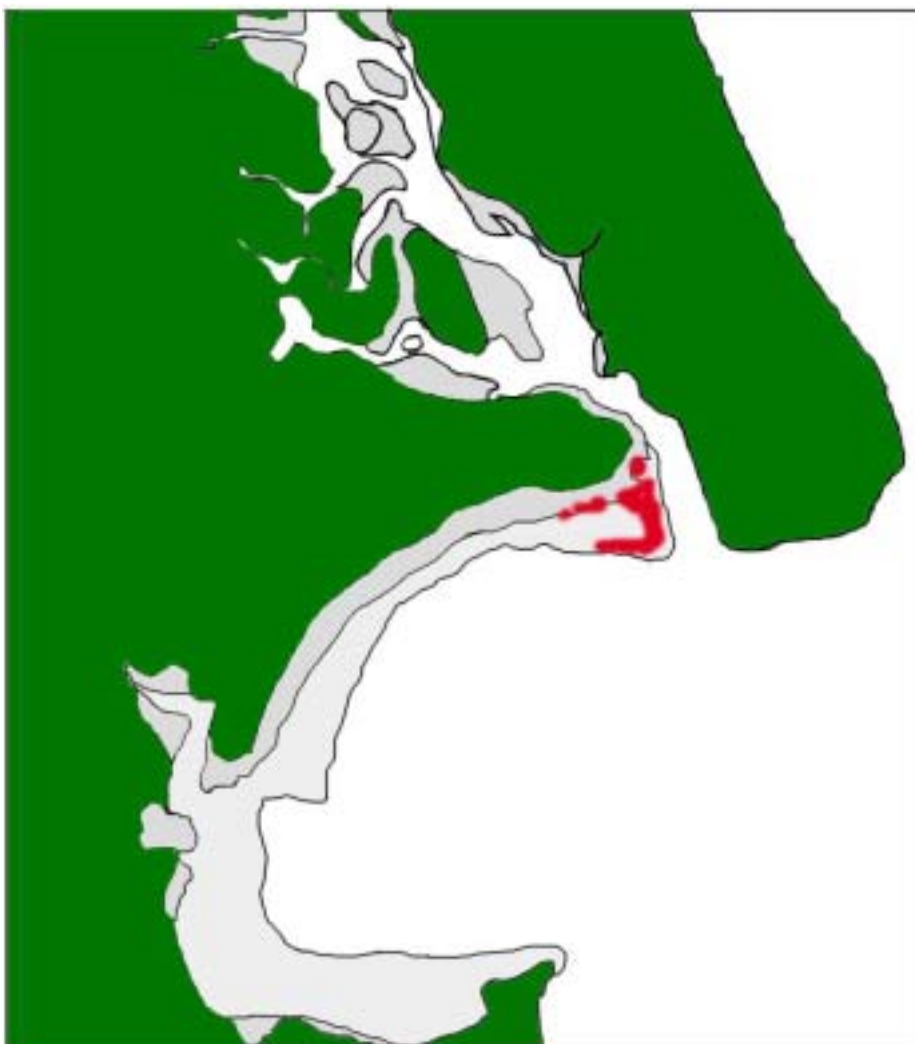
Small aggregations of floating Lyngbya have been regularly encountered during the past week throughout parts of the southern Moreton Bay area, particularly between Coochiemudlo Island and Peel Island.



An algae sample from the **north-western tip of Bribie Island** was positively identified as Lyngbya on 19 December 2002. The sample came from an aggregation of algae washed ashore at the most northern section of Pumicestone Passage, immediately south of the Caloundra Bar. Further inspections of this area will be conducted shortly to assess the extent of Lyngbya growth.

**Deception Bay** was surveyed for the presence of Lyngbya on 28 November 2002. There had been little change since previous surveys two weeks earlier, with a new Lyngbya bloom still developing on seagrass beds in most areas of northern Deception Bay between depths of 0.5 m to 2.2 m at low tide.

The area affected is from 100 m south of the Bribie Island bridge, adjacent to Sandstone Point, extending south and west to the eastern section of Godwin Beach. Lyngbya was observed growing on seagrass in most instances, usually between 20% and 50% cover. Some small areas had more dense growth and were close to 100% cover. Lyngbya was growing at its thickest approximately 300 metres northwest of Cooks Rock, south of Sandstone Point. The map below shows areas where Lyngbya was observed.



### 15 November 2002

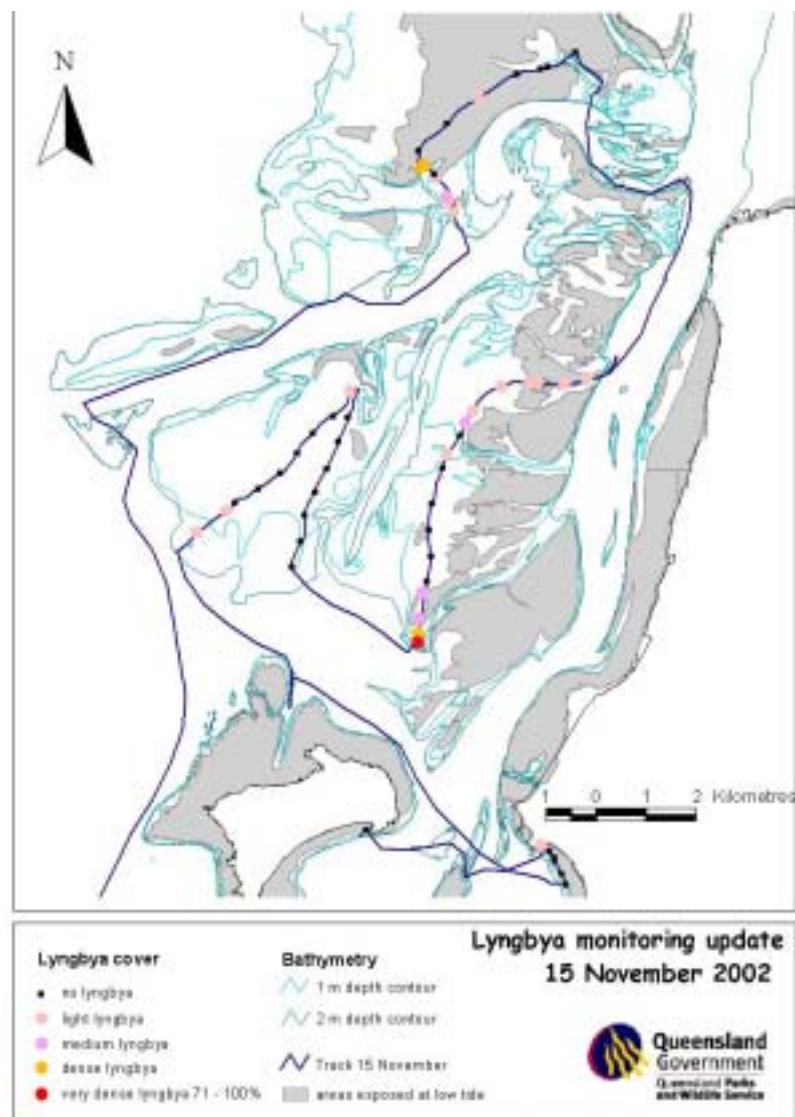
The **Eastern Banks** were surveyed for the presence of Lyngbya on 15 November 2002. There has been a general increase in the density and distribution of Lyngbya over the past few weeks, with several areas of new growth observed.

Areas of highest Lyngbya density were the southern entrance to the Dialba Passage (Amity Banks) and to the northeast of the Fisherman's Gutter (Moreton Banks). The remaining sections of the eastern banks were experiencing a patchy and increasing cover of light to medium Lyngbya growth, with areas affected including the inner Coolooloo Passage, Fingue Passage and Maroom Bank.

Adams Beach on North Stradbroke Island had a very light cover of Lyngbya at its most northern section. Horseshoe Bay at Peel Island will be surveyed in the near future.

The map below shows areas where Lyngbya was observed.

More recent observations from staff of Marine Botany, The University of Queensland, suggest that Lyngbya is also present in patches on the north western sections of the Moreton Banks, and is increasing in density on the Maroom Bank. These locations will be surveyed in the near future by QPWS.



**Horseshoe Bay** at Peel Island is presently experiencing a significant Lyngbya bloom, with a large proportion of the seagrass beds currently affected. During times of southeast winds, small pieces of detached Lyngbya have been observed washed ashore on the beach. Signs have been erected on the beach warning of the dangers of swimming at this location while affected by Lyngbya blooms.

### *14 November 2002*

**Deception Bay** was surveyed for the presence of Lyngbya on 14 November 2002. The early stages of a new bloom were observed, with most parts of northern Deception Bay having new growth of Lyngbya present, between depths of 0.5 m to 2.2 m at low tide.

The area affected is from 100 m south of the Bribie Island bridge, adjacent to Sandstone Point, extending south and west to the western section of Godwin Beach. Lyngbya was observed growing on seagrass in most instances, usually between 20% and 50% cover. Some small areas had more dense growth and were close to 100% cover. Lyngbya was growing at its thickest approximately 300 metres northwest of Cooks Rock, south of Sandstone Point. The map below shows areas where Lyngbya was observed.

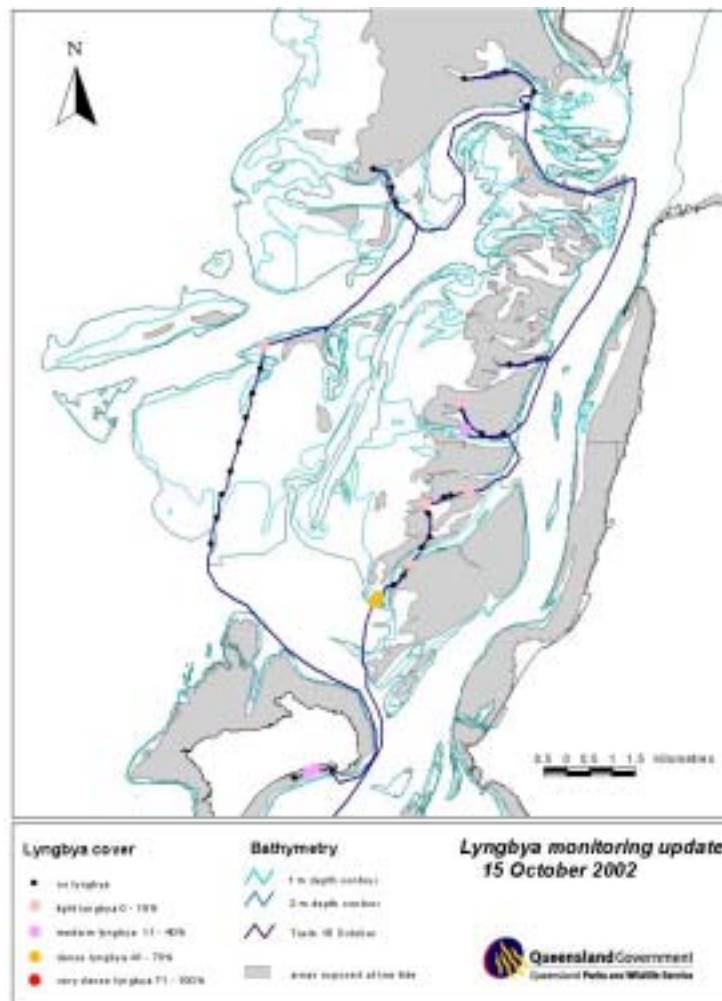


## 15 October 2002

The Eastern banks were surveyed for presence of *Lyngbya majuscula* on 15 October 2002. The persisting areas of *Lyngbya* coverage have all but disappeared following the trend of *lyngbya* reduction over the past few months. The two outstanding thick patches of very 'healthy' *Lyngbya* at the bottom of the Dialba passage mentioned in the last report have remained in similar size and density.

Some very small and isolated patches of light to medium coverage *Lyngbya* have begun to emerge along the edges of the Dialba, Palmer and Coolooloo passages and on the northern edge of the Maroom bank. Also a few very small patches of medium coverage *Lyngbya* have also emerged in Horseshoe bay and will be monitored regularly.

Attached is a map of the Eastern Banks, showing the areas affected. For more information, please refer to the map below.



## 24 May 2002

QPWS staff inspected the Eastern Banks on 23 and 24 May 2002 and Thompson Beach on 20 May 2002 to determine any change in the *Lyngbya* status.

Patches of sparse and medium *Lyngbya* growth was found on sand and seagrass in the intertidal and shallow subtidal areas of Thompson Beach. No *Lyngbya*, however, had washed ashore.

Attached to this email is a photo of *Lyngbya* on seagrass beds at Thompson Beach. Also, *Lyngbya* was found growing in a small area of sand depressions in the intertidal zone at Victoria Point. See the attached map for specific location.

*Lyngbya* growth on the Maroom Bank has increased considerably in thickness, with some sand and seagrass areas supporting a dense cover of *Lyngbya* (up to 100% cover).

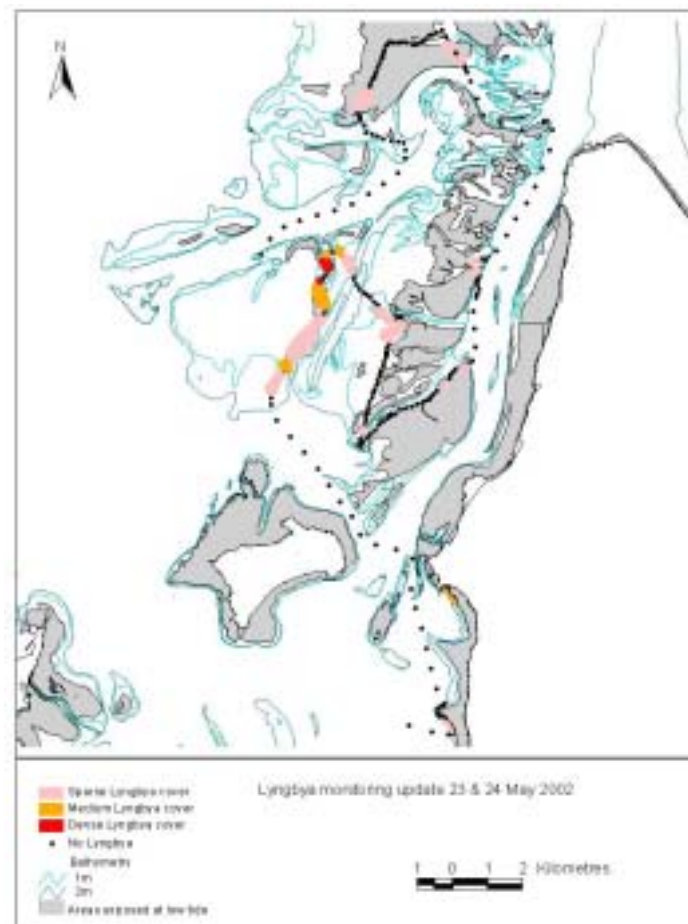
The situation at other areas of the Eastern Banks remains generally unchanged. *Lyngbya* is still growing in Coolooloo Passage, some parts of Dialba Passage (Amity Banks) and around Fishermans Gutter and Browns Gutter (Moreton Banks). *Lyngbya* was also found growing on the edges of Fingue Passage on the Amity Banks.

*Lyngbya* growth in Deanbilla Bay (south of Dunwich on North Stradbroke Island) is persisting. *Lyngbya* reported to be growing near Wallen Wallen (south of Deanbilla Bay) was inspected and only sparse amounts were found.

*Lyngbya* growth in Horseshoe Bay, Peel Island remains minor.

The situation at Deception Bay remains unchanged, with no significant *Lyngbya* growth to report.

Below is a map of the Eastern Banks, showing the areas described above and a map of Victoria Point and Thompson Beach.



### **11 May 2002**

QPWS staff inspected the Eastern Banks on 11 May 2002 to determine any change in the *Lyngbya* status.

The situation on the Eastern Banks remains largely unchanged, with a series of small/medium blooms persisting on several shallow seagrass communities. In addition, some new blooms appear to be starting in some locations.

*Lyngbya* growth on the Maroom Bank has increased in extent and thickness, as has a bloom in the Coolooloo Passage (Amity Banks). Other areas that still support *Lyngbya* growth include the Moreton Bank in the vicinity of Fisherman's Gutter, Dialba Passage (Amity Banks) and Deanbilla Bay (south of Dunwich on North Stradbroke Island).

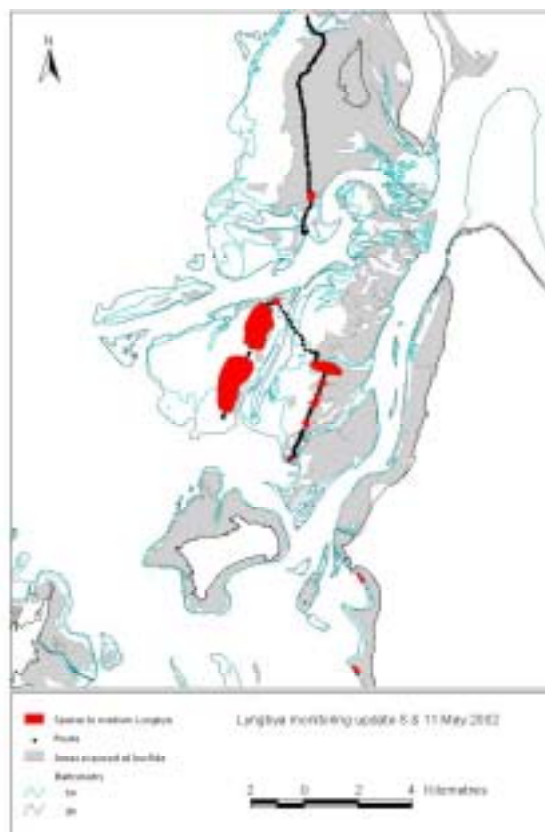
Also on 17 May 2002, small amounts of *Lyngbya* were found growing at the western end of Horseshoe Bay at Peel Island. This area had been devoid of *Lyngbya* growth since January 2002 and this new growth will be monitored closely by QPWS staff over the next few weeks.

The situation at Deception Bay remains unchanged, with no significant *Lyngbya* growth to report.

Also on 17 May 2002, small amounts of *Lyngbya* were found growing at the western end of Horseshoe Bay at Peel Island. This area had been devoid of *Lyngbya* growth since January 2002 and this new growth will be monitored closely by QPWS staff over the next few weeks.

The situation at Deception Bay remains unchanged, with no significant *Lyngbya* growth to report.

Below is a map of the Eastern Banks, showing the areas described above



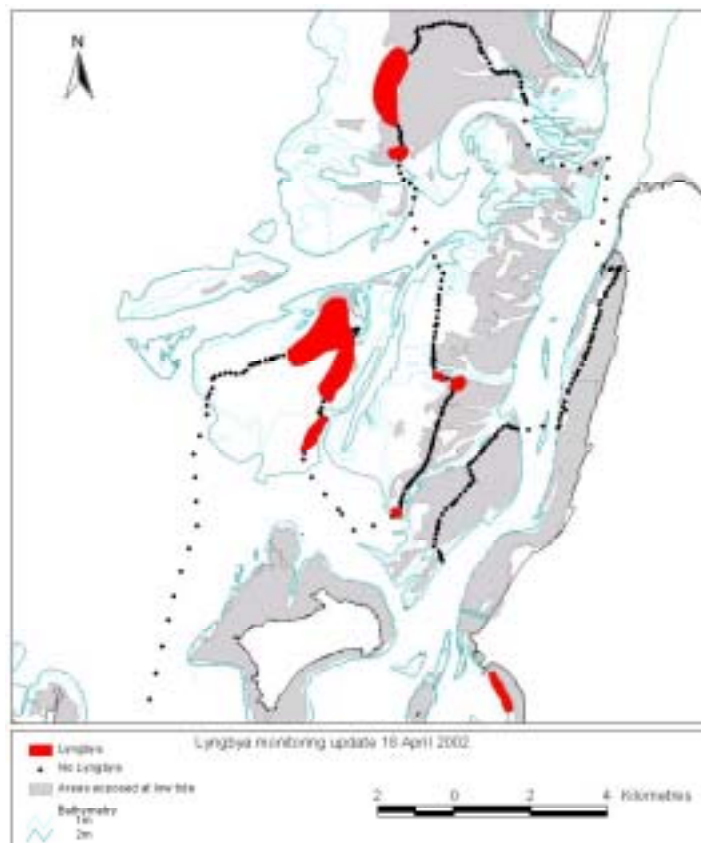
**18 April 2002**

QPWS staff inspected the Eastern Banks and Deception Bay on 18 April 2002 to determine any changes in the *Lyngbya* status.

At Deception Bay, no *Lyngbya* was found despite very good visibility. The small patches of *Lyngbya* growth that were present here several weeks ago have reduced to nothing. Some very small floating aggregations of *Lyngbya* were found in Pumicestone Passage near the mouth of Bullock Creek. But no evidence could be found of any growth on the adjacent seagrass beds.

On the eastern banks, the situation remains largely unchanged, with some reasonable patches of *Lyngbya* growth in some areas. On the Moreton Banks, the density of *Lyngbya* growing north of Fishermans Gutter has reduced over the past two weeks. However, on the Maroom Bank, the opposite is the case, with an increase in *Lyngbya* distribution and density. A small patch of new *Lyngbya* growth was observed on the southern side of the Coolooloo Passage, with small blooms persisting at the southern entrance to Dialba Passage, and at Deanbilla Bay, south of Dunwich.

A map of the areas affected by *Lyngbya* on the eastern banks is attached. This map also shows the track followed by the vessel when undertaking the survey.



At Thompson's Beach, Victoria Point, there has been no subsequent washing up of *Lyngbya* onto the foreshore since Easter. However, some small amounts of sparse *Lyngbya* have been observed growing amongst the seagrass opposite the beach at this

location.

#### ***4 April 2002***

QPWS inspected the Eastern Banks on 4 April 2002 to determine any changes in the *Lyngbya* situation.

There has been a slight increase in areas affected by *Lyngbya* on the eastern banks in the past week. A bloom stretching approximately 2 km is present on the southern end of the Moreton Banks, north of Fisherman's Gutter. Additionally, some new areas of *Lyngbya* growth have been detected on the Moreton Banks near Browns Gutter, Fisherman's Gutter and Southwest of Crab Island.

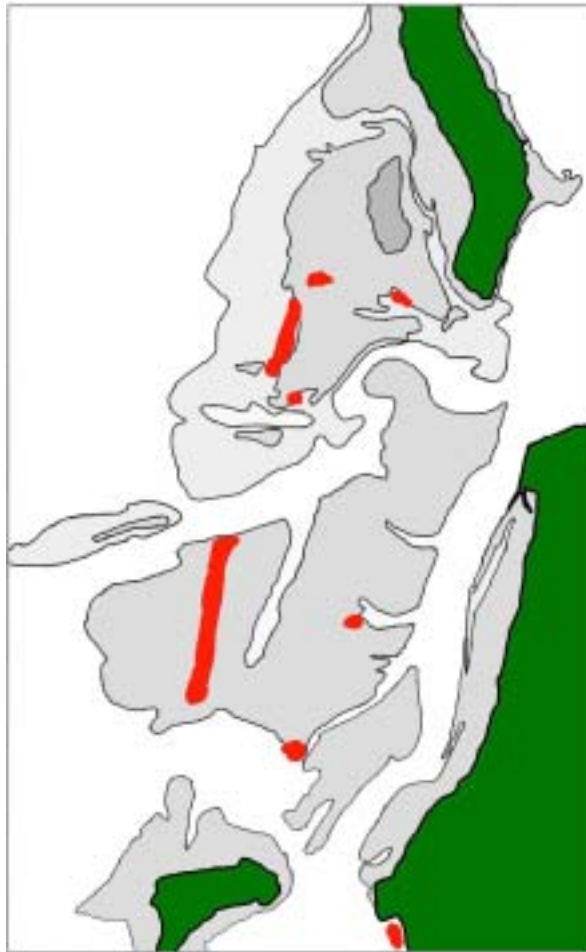
New *Lyngbya* growth was observed on the Maroom Bank, from the site of the automated sampler to the Rous Channel. This consisted of healthy clumps of *Lyngbya* with a light coverage of approximately 5%. A small patch of *Lyngbya* growth is also present at the southern entrance to Dialba Passage.

Healthy *Lyngbya* is growing within Deanbilla Bay, opposite Adams Beach, immediately south of Dunwich (North Stradbroke Island). Some very small amounts of this *Lyngbya* are washing ashore amongst seagrass.

At Thompson Beach, Victoria Point, the quantities of *Lyngbya* washing ashore have reduced significantly since last week, when Council closed the beach on Thursday due to large amounts washing ashore. The beach has since been re-opened and only very small amounts of *Lyngbya* are present amongst seagrass at the northern end of the beach. Most of the *Lyngbya* present on the beach before Easter was removed by Council with some washing offshore into deeper waters over the weekend. Some *Lyngbya* has been found growing on seagrass opposite the beach.

Attached is:

- a map showing the areas where *Lyngbya* was found on the eastern banks yesterday, and
- a photograph of Thompson Beach from last week.



Deception Bay will be surveyed once the strong southeasterly winds that have been blowing for the past week reduce. If you need more information, please give me a call.

**26 March 2002.**

A new bloom of *Lyngbya* has been found at Thompson's Beach, on the southern side of Victoria Point. Officers of Redland Shire Council and QPWS inspected the site yesterday and observed a mix of algae and seagrass washed ashore along a stretch of foreshore extending approximately 400 metres. Samples were taken to the University of Queensland, which subsequently confirmed the algae to be *Lyngbya*.

Council and QPWS staff are currently on site removing *Lyngbya* from the high water mark using a tractor. The sandy nature of the beach at this site has made this the most appropriate method of removal. The removed *Lyngbya* is being transported to an appropriate land fill site.

Some *Lyngbya* has also washed into mangroves adjacent to the beach and Council is presently arranging for this to be removed using one of the suction harvesting contractors trialled by QPWS last season at Deception Bay. These methods remove *Lyngbya* tissue entangled within mangroves without physically damaging the trees or their aerial roots.

QPWS will inspect the seagrass beds off Thompson's Beach tomorrow to determine the extent and severity of the bloom in waters adjacent to the beach. Several signs have

been installed along Thompson's Beach warning the public of the presence of *Lyngbya* at the site.

### **25 March 2002**

QPWS staff have inspected the Eastern Banks on several occasions over the past two weeks leading up to Easter. Almost the entire banks are devoid of *Lyngbya* growth. However, there are a few very small patches of *Lyngbya* as follows:

1. On the Moreton Banks, immediately north of Fisherman's Gutter, a small bloom stretching approximately 1 km long is growing on seagrass (this area is called the Boolong Bank). This is by far the largest patch of *Lyngbya* seen recently on the banks.
2. A small patch of *Lyngbya* is growing on seagrass in deeper parts of Deanbilla Bay (immediately South of Dunwich on N. Stradbroke Island). This site was inspected this morning and a few very small patches of *Lyngbya* have washed ashore at Adams Beach amongst seagrass at the Northern end of the beach.
3. A small patch of light *Lyngbya* cover is present around the Welsby light on the Amity Banks (Fingue Passage). This is not washing ashore at adjacent beaches at Amity, which were inspected this morning and are devoid of *Lyngbya*.
4. A small patch of *Lyngbya* growth at the southern entrance to Dialba Passage on the Amity Banks.
5. Two small, isolated patches of *Lyngbya* growth on the Maroom Bank.

There has been little change in the situation at Deception Bay, with very little *Lyngbya* growing in this region. The foreshores of Godwin Beach and Pebble Beach will be inspected in the next two days prior to Easter. When last inspected late last week, they were devoid of *Lyngbya* growth.

### **8 March 2002**

QPWS staff inspected northern Deception Bay on 8 March 2002 to determine any change in the status of *Lyngbya* in the area.

There has been another very significant reduction in the distribution and abundance of *Lyngbya* in Deception Bay over the past week. Over 100 sites between Sandstone Point and Beachmere were examined without any *Lyngbya* found growing on the substrate or on seagrass. Two small floating aggregations of *Lyngbya* were observed on the water's surface off Godwin Beach. But all other areas including the usually affected area of Cooks Rock were devoid of *Lyngbya* growth.

An inspection of the Godwin Beach foreshore this morning confirmed that *Lyngbya* is yet to wash ashore in the area.

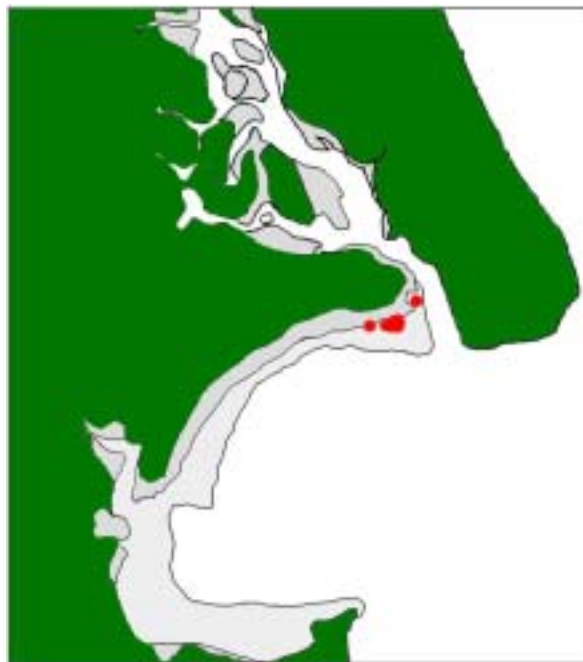
Inspections of the Eastern Banks will be undertaken this week, weather permitting.

### **20 February 2002**

QPWS staff inspected the Eastern Banks and Deception Bay this week to determine any changes in the *Lyngbya* situation.

The Eastern Banks have remained largely free of *Lyngbya* over the past few weeks, with only some very small patches of isolated growth found within and around the Coolooloo Passage on the Amity Banks. Horseshoe Bay at Peel Island has no *Lyngbya* growth.

At Deception Bay, the 3-4 km squared area of seagrass that was affected by *Lyngbya* two weeks ago has reduced in density and area. *Lyngbya* is now present only in patches of light cover around Cooks Rock off Sandstone Point. The attached map shows the locations where these patches were observed. The foreshores of Godwin Beach and Pebble Beach remain free of any *Lyngbya* (none is washing ashore).



### **21 January 2002**

QPWS staff inspected Deception Bay and the Eastern Banks late last week to determine any changes in the *Lyngbya* status.

At **Deception Bay**, the extent of *Lyngbya* growth remains unchanged, with a light cover of *Lyngbya* stretching from opposite Sandstone Point in a southerly and westerly direction to Godwin Beach. The area affected remains at about 3 to 4 kilometres squared and has not increased significantly in density over the past week. There is still no *Lyngbya* washing ashore into the adjacent foreshores of Godwin Beach and Sandstone Point.

On the **Eastern Banks**, *Lyngbya* has reduced slightly in the past week, with small patches of *Lyngbya* on the Moreton Banks disappearing. The only significant growth of *Lyngbya* on the entire Eastern Banks area remains at the southern entrance to Dialba Passage, next to the QPWS 'go slow' sign. At this site, a small area with reasonably thick *Lyngbya* growth over seagrass remains.

### **9 January 2002**

The Amity Banks remain largely free of *Lyngbya* cover, which reduced significantly during December 2001. The only patch of significant growth observed today was located at the southern entrance to the Dialba Passage, north of Peel Island reef (adjacent to QPWS Go Slow sign). The Coolooloo and Fingue Passages remain free of *Lyngbya*.

Areas of the Moreton Banks inspected were also devoid of *Lyngbya*, although tidal restrictions prevented a thorough assessment. Horseshoe Bay at Peel Island also remains *Lyngbya*-free at this stage, after reducing significantly during December 2001.

### **8 January 2002**

*Lyngbya* has started growing amongst seagrass in a thin veneer stretching from Sandstone Point (approx. 1 km south of the Bribie Island Bridge) in a southerly and westerly direction around northern Deception Bay as far as Godwin Beach. The area affected is approximately 3 to 4 kilometres squared.

The density of *Lyngbya* cover observed is quite light, with underlying seagrasses still receiving sunlight in most areas. No floating rafts have been observed and no *Lyngbya* was recorded ashore on the foreshores of Sandstone Point or Godwin Beach.

A map of the areas where *Lyngbya* was found is attached. Further inspections of the Eastern Banks are being undertaken today, and updates will follow shortly.

