

# QUEENSLAND "WHOLE OF GOVERNMENT" SATELLITE IMAGERY COVERAGE 2010



© The State of Queensland, Department of Environment and Resource Management, 2010  
Copyright protects this publication.

Except for purposes permitted by the Copyright Act 1968, reproduction by whatever means is prohibited without the prior written permission of the Department of Environment and Resource Management.

Enquiries should be addressed to:

The DIRECTOR GENERAL, Department of Environment and Resource Management,  
400 George Street Brisbane, QLD 4000 AUSTRALIA.

For further information contact: Senior Spatial Information Officer, Imagery Management,  
E-mail: arch.mcsween@derm.qld.gov.au  
Telephone: (07) 3896 3187

## LEGEND

1:100 000 Map Sheet Boundary

Major road

### QUICKBIRD - 0.6 metre pixel

- GREATER BRISBANE (2004)
- INDIGENOUS HOUSING (2006)
- SAPPHIRE (2008)

### IKONOS - 1 metre pixel

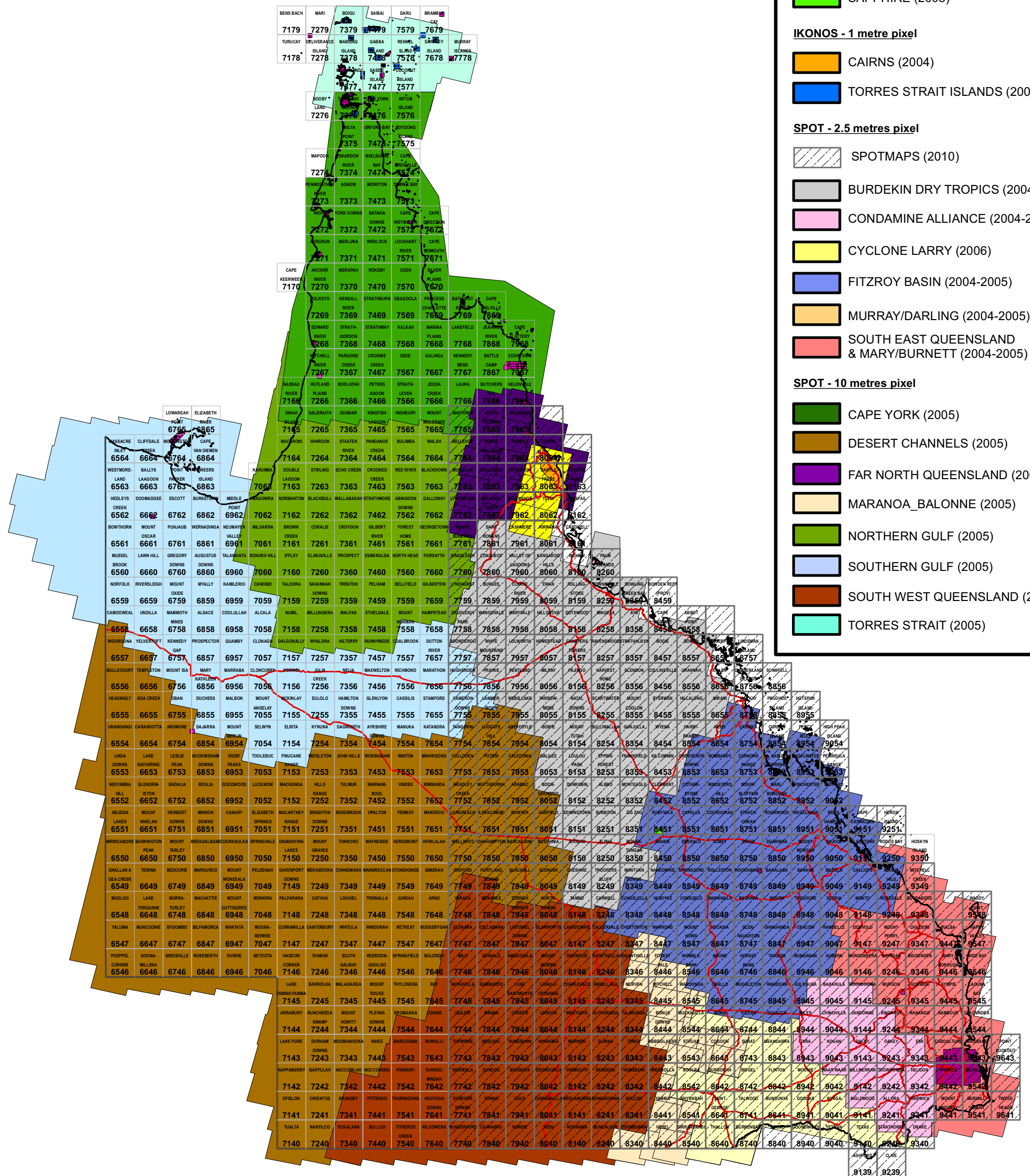
- CAIRNS (2004)
- TORRES STRAIT ISLANDS (2007)

### SPOT - 2.5 metres pixel

- SPOTMAPS (2010)
- BURDEKIN DRY TROPICS (2004-2005)
- CONDOMINE ALLIANCE (2004-2005)
- CYCLONE LARRY (2006)
- FITZROY BASIN (2004-2005)
- MURRAY/DARLING (2004-2005)
- SOUTH EAST QUEENSLAND & MARY/BURNETT (2004-2005)

### SPOT - 10 metres pixel

- CAPE YORK (2005)
- DESERT CHANNELS (2005)
- FAR NORTH QUEENSLAND (2005)
- MARANOVA\_BALONNE (2005)
- NORTHERN GULF (2005)
- SOUTHERN GULF (2005)
- SOUTH WEST QUEENSLAND (2005)
- TORRES STRAIT (2005)



The satellite imagery footprints shown on this map are approximate and should be used as a guide only.