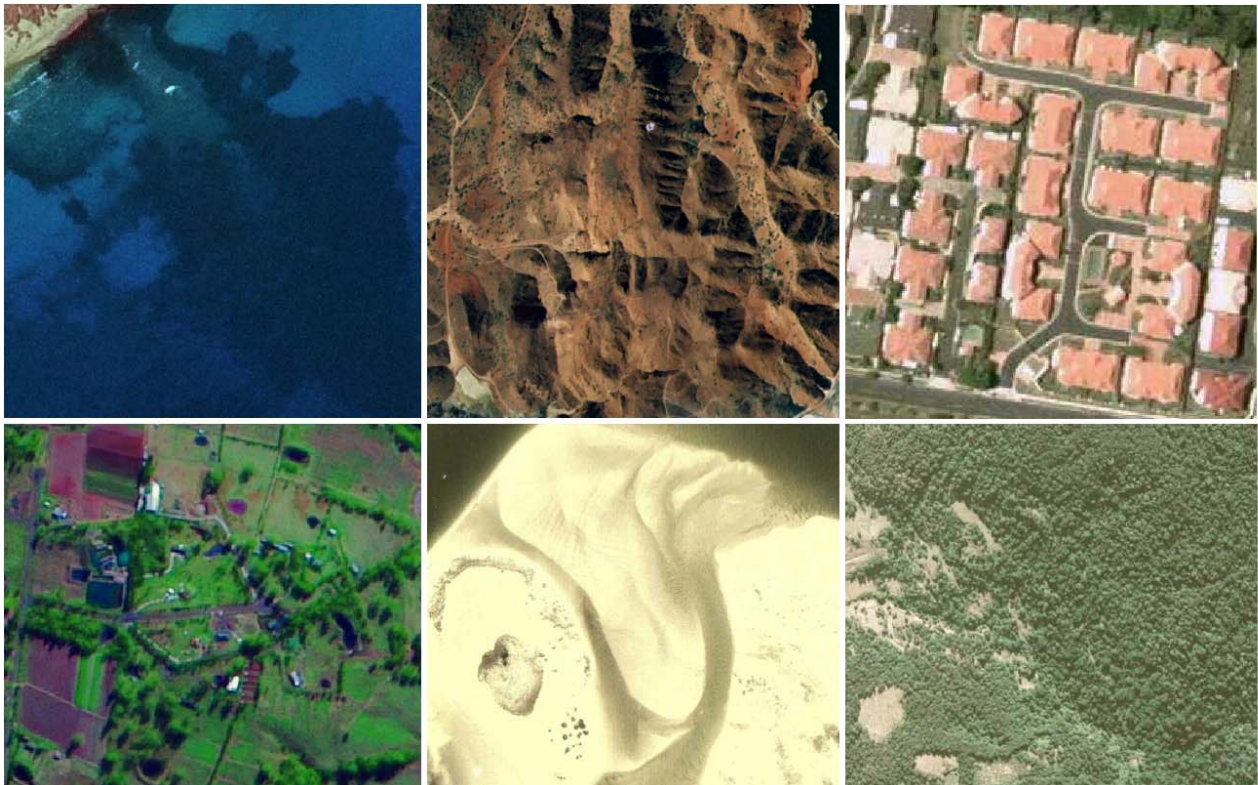


Queensland Spatial Imagery Acquisition Program

2011-2014



This program was prepared by the Department of Environment and Resource Management (DERM)

NOTE: THIS IS A DYNAMIC DOCUMENT THAT IS INTENDED TO PROVIDE A GUIDE FOR PLANNING FUTURE ACQUISITION PROJECTS. ONLY IMAGERY FOR WHICH FUNDING IS RECEIVED CAN BE ASSURED OF BEING CAPTURED.

Disclaimer

Accuracy/reliability

All data and information in this publication are believed to be accurate and have come from sources believed to be reliable.

Liability for damages

The State of Queensland does not guarantee or represent that the data and information in this publication are accurate, up to date or complete, and disclaims liability for all claims, losses, damages or costs of whatever nature and howsoever occurring, arising as a result of relying on the data and information, regardless of the form of action, whether in contract, tort (including negligence), breach of statutory duty or otherwise.

For more information on the coordination of spatial imagery acquisition in Queensland, please contact the Spatial Imagery Coordinator at the Department of Environment and Resource Management on 3896 3027 or email Paul.Brown@derm.qld.gov.au

For information on the QSIC Spatial Imagery Working Group visit Working Groups>Spatial Imagery at the QSIC website. <http://www.qsic.qld.gov.au>

Agencies acquiring spatial imagery are encouraged to coordinate their project with other acquisition projects through the Spatial Imagery Coordinator.

Spatial Imagery Acquisition Program 2011-2014

Purpose

The purpose of this document is to provide a plan that optimises the acquisition of spatial imagery in Queensland for government agencies. The program operates in conjunction with the Spatial Imagery Subscription Plan which raises funds for, and enables coordination of imagery acquisition projects for participating agencies.

Benefits to participating agencies are: -

- Access to imagery acquired by other agencies at different resolutions,
- Improved sequencing of acquisition of imagery of different resolutions to provide better coverage over time,
- Lower costs through coordination with other acquisition programs in the region, and cost sharing with other agencies, and
- Improved budget planning and support for agencies' business cases for imagery acquisition.

Introduction

Spatial imagery provides a photographic record of Queensland's natural and physical assets and environment recorded from an aircraft or satellite. It contains measurable data about a feature that enables complex analysis of the feature or location and the examination and mapping of geographical locations and issues without the need to visit the site. As with all photography, spatial imagery may be recorded at a range of scales to suit a variety of applications.

With uses ranging from the management of natural disasters, climate change planning, assets management and assessing the condition of soils and vegetation, spatial imagery is fundamental to efficient government and resource management.

The Department of Environment and Resource Management is facilitating a coordinated program to establish and maintain a spatial imagery infrastructure for Queensland. Spatial imagery infrastructure includes an imagery storage, management and distribution system.

The Queensland Spatial Imagery Acquisition Program

The Queensland Spatial Imagery Acquisition Program identifies the minimum, or base level requirements for imagery to support public administration across a range of activities in Queensland. The Program is identified at three general resolutions, Urban - 25cm resolution or better, Coastal -25cm to 50cm resolution, and Rural and Remote - 50cm – 10m resolution.

Urban Program

Imagery is intended to be acquired (funding permitting) over urban centres of South East Queensland on a two year cycle in coordination with Local Governments and a four year cycle over other coastal areas of Queensland. Non coastal towns have an intended update cycle of every five to ten years years. Urban imagery is typically acquired at a resolution of 25cm or better.

Commencing in July 2011 seven local government areas in South East Queensland (Brisbane, Gold Coast, Ipswich, Logan, Moreton Bay, Redland and Sunshine Coast) will have imagery captured at 10cm resolution. Regular quarterly updates are also being

captured over the urban extents of these LGA areas.

In 2012-14 consideration will be given to increase acquisition of major provincial cities on a two year cycle as in South East Queensland.

Local Governments and other organisations are invited to contact the Spatial Imagery Coordinator for assistance in funding from the Spatial Imagery Subscription Plan for any imagery projects.

Coastal Imagery

Coastal Imagery at 50cm or better resolution will be acquired over four coastal regions on a four or five year cycle. The four areas are SEQ, Capricorn / Wide Bay, Central Queensland and North Queensland. Imagery acquisition will be scheduled to complement urban imagery in each area. Since 2008 coordinating imagery acquisition between the three levels of government has provided value for money for all participants. Planned projects include North Queensland in 2011, SEQ non urban 2013, Central Queensland 2013 and Capricorn / Wide Bay in 2014.

Rural/Remote Imagery

In 2009 2.5 metre imagery was acquired over the eastern catchments and funded under the State's Reef Rescue initiative and from the Federal Department of Climate Change. Further funding is required to acquire 2.5m imagery over the remaining western portion (See Diagram Page 5) of the state. Close liaison with the Remote Sensing unit in DERM, Natural Resource Management Bodies and the Federal Government may enable the remaining area to be purchased. SPOT Imaging acquired the imagery in 2009.

The Program is designed to maintain the current status of coverage at resolutions of 2.5m to 10 metres or higher resolutions if possible over the Rural and Remote areas of the state on a five year cycle.

Selected rural areas will be targeted for 50cm imagery if funding permits. These areas include major transport routes, rural towns and where significant primary industry investment may occur. Effectively rural 50cm imagery will be an extension of the Coastal imagery. Rural 50cm imagery will have a five to ten year update cycle.

Natural Disasters

Acquisition of imagery is programmed for the optimum time of a natural disaster event. The Spatial Imagery Acquisition Program cannot address these needs but the Spatial Imagery Subscription Plan has contingency funding provided by the Department of Community Safety for disaster imagery. Local Governments are invited to contribute to the acquisition of disaster imagery when an event occurs. The Department of Community Safety has established procedures for the contingency funds to be available when events occur, contact the Manager, Protecting Our Coastal Communities, (ph) 3247 8463.

Funding

The acquisition of imagery is funded through: -

- Subscriptions and contributions to the Spatial Imagery Subscription Plan,
- Grants from Federal Government programs, and
- Other agencies' projects.


The Spatial Imagery Subscription Plan

The [Spatial Imagery Subscription Plan](#) was established by the Queensland Spatial Information Council's Spatial Imagery Working Group and is managed by the Data Coordination Unit in DERM. Funds are raised through subscriptions (currently \$25,000 per 12 month period, exclusive of GST) that entitle a subscriber to all imagery acquired by the fund, licence permitting. Below is a map that contains links to maps that show the coverage of imagery available through the Spatial Imagery Subscription Plan.

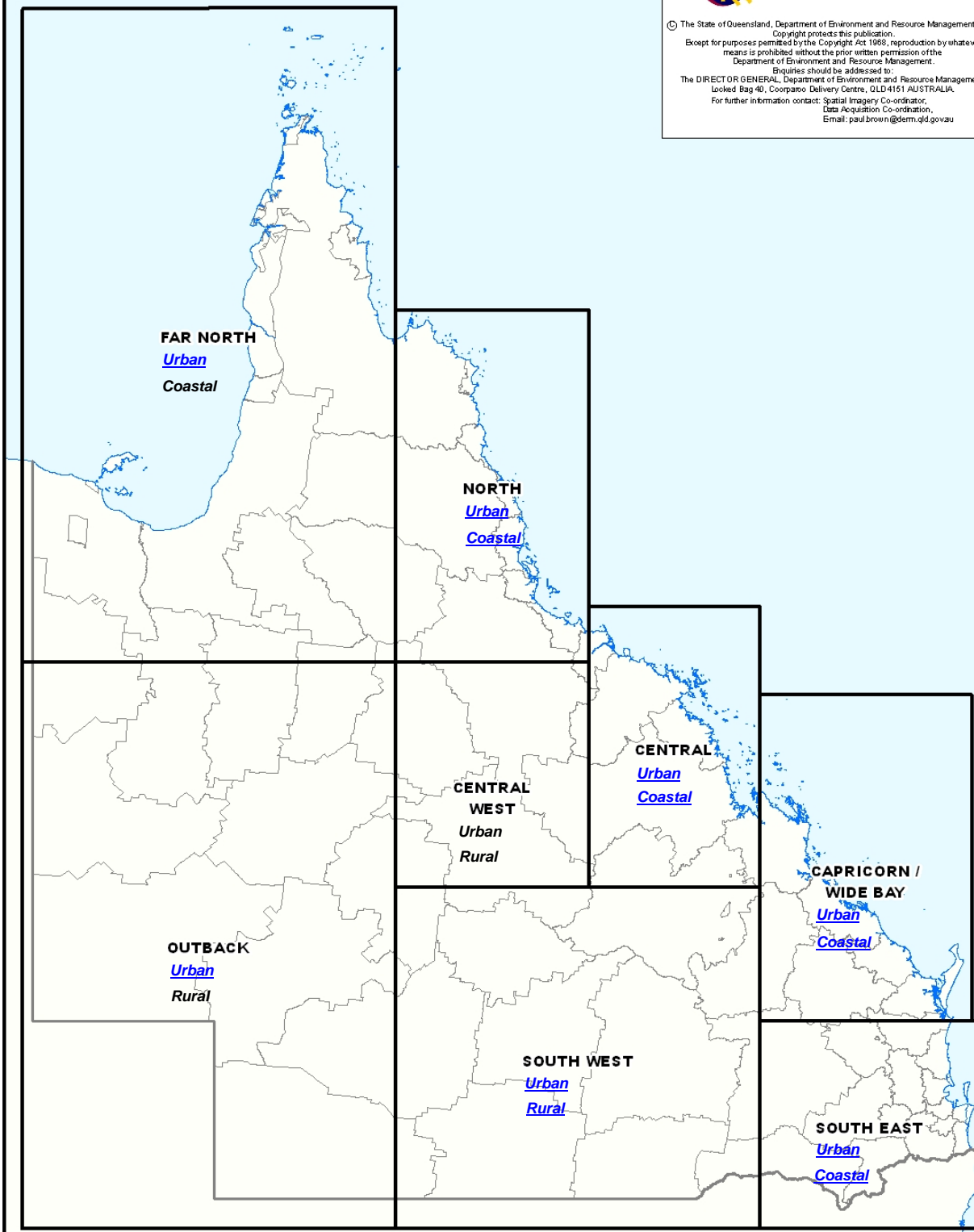
Click on the applicable link below.

INDEX TO MAPS

QUEENSLAND Spatial Imagery Subscription Plan



© The State of Queensland, Department of Environment and Resource Management, 2010.
Copyright protects this publication.
Except for purposes permitted by the Copyright Act 1968, reproduction by whatever means is prohibited without the prior written permission of the Department of Environment and Resource Management.
Enquiries should be addressed to:
The DIRECTOR GENERAL, Department of Environment and Resource Management,
Locked Bag 40, Coorparoo Delivery Centre, QLD 4151 AUSTRALIA.
For further information contact: Spatial Imagery Co-ordinator,
Data Acquisition Co-ordination,
Email: paul.brown@derm.qld.gov.au



FAR NORTH Urban Coastal	NORTH Urban Coastal	
OUTBACK Urban Rural	CENTRAL WEST Urban Rural	CENTRAL Urban Coastal
	SOUTH WEST Urban Rural	CAPRICORN / WIDE BAY Urban Coastal
		SOUTH EAST Urban Coastal

QUEENSLAND "WHOLE OF GOVERNMENT" SATELLITE IMAGERY COVERAGE 2011



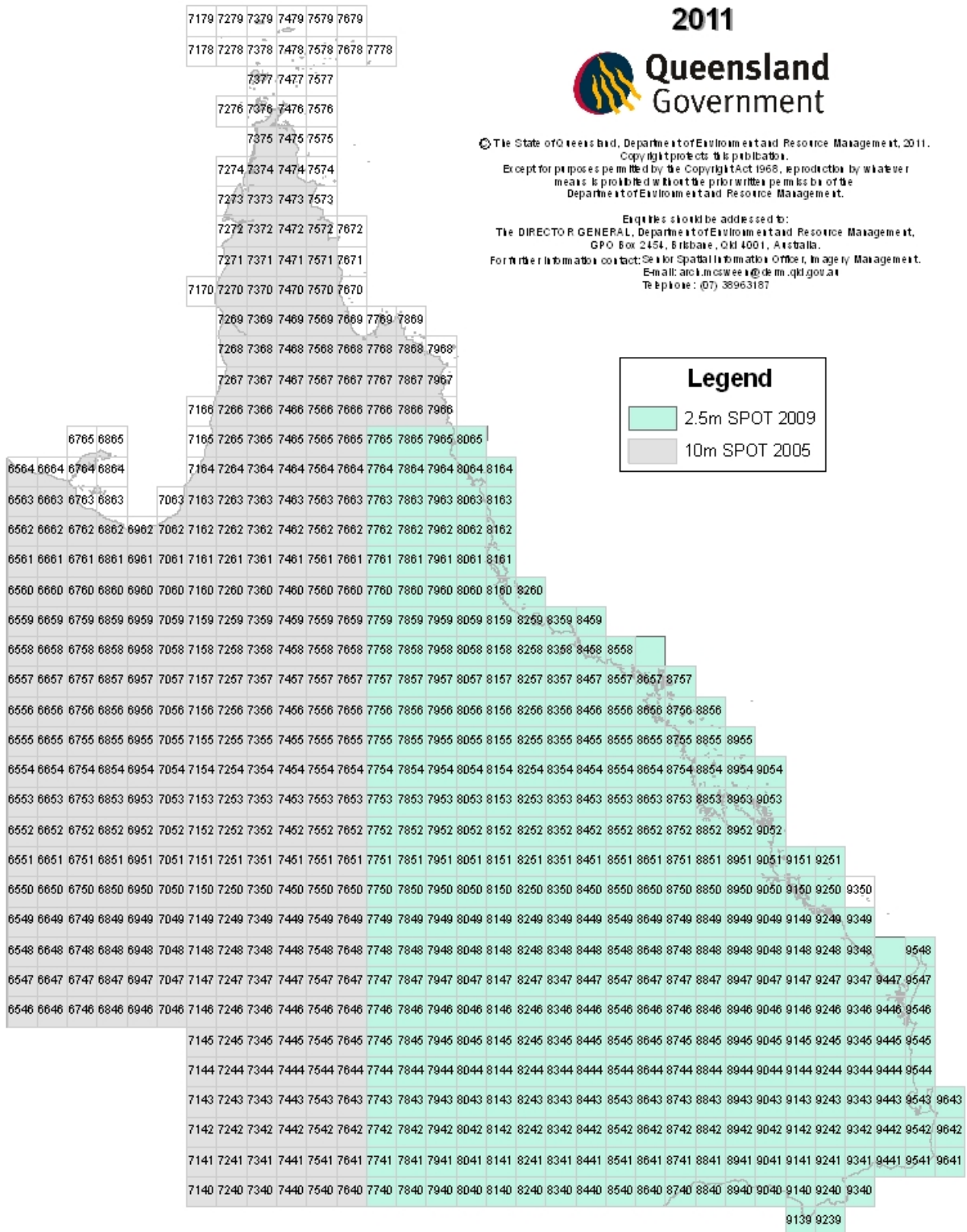
© The State of Queensland, Department of Environment and Resource Management, 2011.
Copyright protects this publication.
Except for purposes permitted by the Copyright Act 1968, reproduction by whatever means is prohibited without the prior written permission of the Department of Environment and Resource Management.

Enquiries should be addressed to:
The DIRECTOR GENERAL, Department of Environment and Resource Management,
GPO Box 2454, Brisbane, QLD 4001, Australia.
For further information contact: Senior Spatial Information Officer, Imagery Management.
E-mail: andrew.moswell@dem.qld.gov.au
Telephone: (07) 38963187

Legend

2.5m SPOT 2009

10m SPOT 2005



The satellite imagery footprint shown on this map are approximate and should be used as a guide only.