

QUEENSLAND "WHOLE OF GOVERNMENT" SATELLITE IMAGERY COVERAGE 2008

© The State of Queensland, Department of Natural Resources and Water, 2008.
Copyright protects this publication.

Except for purposes permitted by the Copyright Act 1968, reproduction by whatever means is prohibited without the prior written permission of the Department of Natural Resources and Water.

Enquiries should be addressed to:

The DIRECTOR GENERAL, Department of Natural Resources and Water,
Locked Bag 40, Coorparoo Delivery Centre, QLD 4151 AUSTRALIA.

For further information contact: Senior Spatial Information Officer,
Imagery Co-ordination Program, E-mail: arch.mcsween@nrw.qld.gov.au
Telephone: (07) 3896 3187

LEGEND

1:100 000 Map Sheet Boundary

Major road

QUICKBIRD - 0.6 metre pixel

- GREATER BRISBANE (2004)
- INDIGENOUS HOUSING (2006)
- SAPPHIRE (2008)

IKONOS - 1 metre pixel

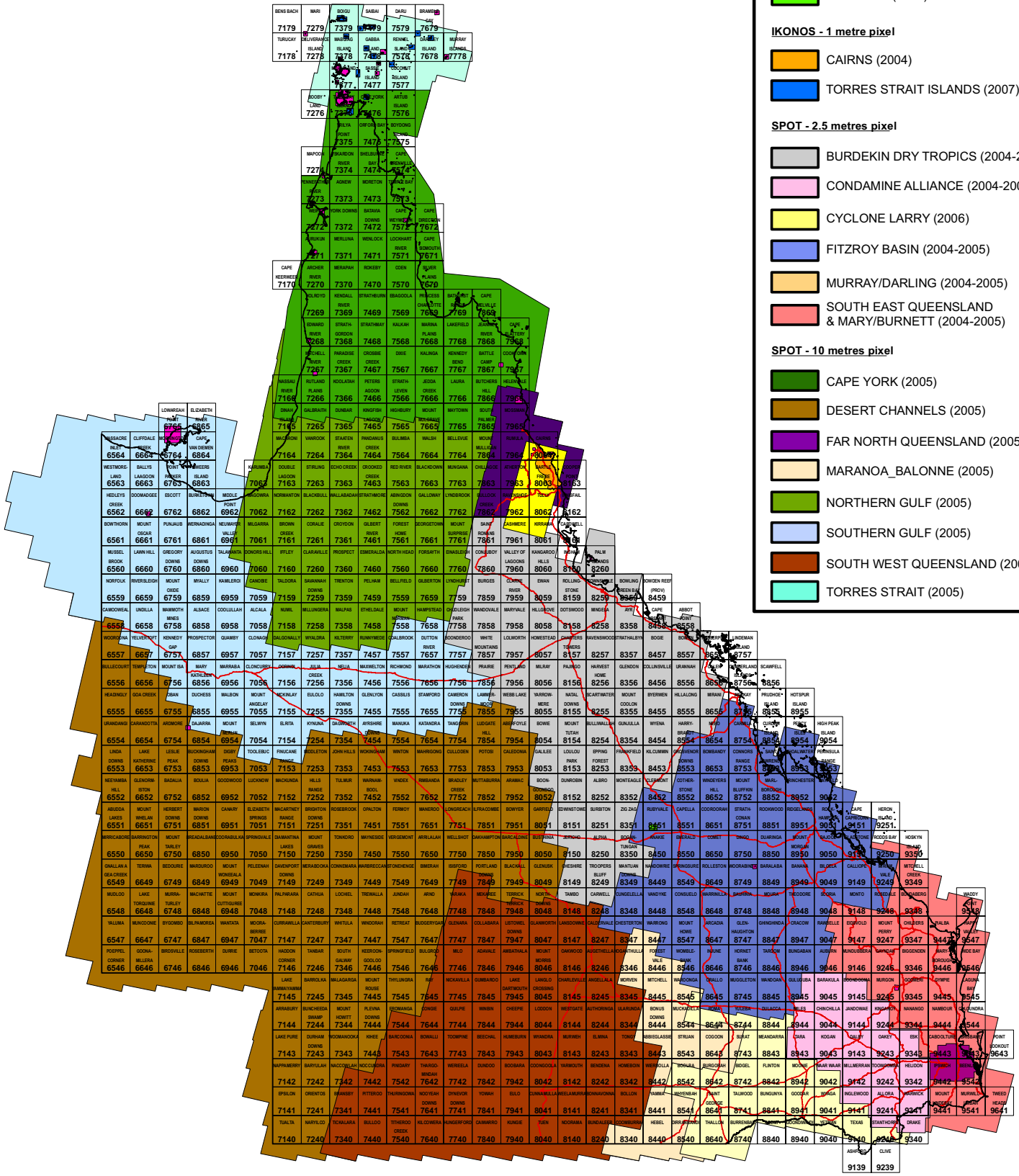
- CAIRNS (2004)
- TORRES STRAIT ISLANDS (2007)

SPOT - 2.5 metres pixel

- BURDEKIN DRY TROPICS (2004-2005)
- CONDAMINE ALLIANCE (2004-2005)
- CYCLONE LARRY (2006)
- FITZROY BASIN (2004-2005)
- MURRAY/DARLING (2004-2005)
- SOUTH EAST QUEENSLAND & MARY/BURNETT (2004-2005)

SPOT - 10 metres pixel

- CAPE YORK (2005)
- DESERT CHANNELS (2005)
- FAR NORTH QUEENSLAND (2005)
- MARANOVA_BALONNE (2005)
- NORTHERN GULF (2005)
- SOUTHERN GULF (2005)
- SOUTH WEST QUEENSLAND (2005)
- TORRES STRAIT (2005)



The satellite imagery footprints shown on this map are approximate and should be used as a guide only.